

PERMIT DRAWINGS FOR

PORT OF HOUSTON AUTHORITY

WHARF 2 BERTH EXPANSION CARE TERMINAL SWG-1997-02927

HDR Project No.
 10236603

Houston, Texas
 January, 2025

INDEX OF DRAWINGS

SHEET NUMBER	SHEET TITLE
GENERAL	
1 OF 8	COVER SHEET AND INDEX
2 OF 8	CONTROL TABLES
3 OF 8	DREDGE MATERIAL PLACEMENT AREAS
CIVIL	
4 OF 8	OVERALL SITE PLAN
5 OF 8	EXISTING CONDITIONS
6 OF 8	PROJECT LAYOUT
7 OF 8	CROSS-SECTIONS
8 OF 8	PILE TYPICAL SECTION

CALL BEFORE YOU DIG!



PARTICIPANTS REQUEST
 48 HOURS NOTICE BEFORE YOU DIG,
 DRILL, OR BLAST - STOP AND CALL

811

THE LONE STAR
 NOTIFICATION COMPANY
 AT 1-800-669-8344

THIS DRAWING PRINTED HALF SIZE

1 2 3 4 5 6 7 8

TIDE STAFF DATA - MLLW			
CHANNEL	TIDE STAFF	EASTING	NORTHING
HSC	GREEN CHANNEL MARKER #139SW	3,201,081.6	13,836,374.2
HSC	RED CHANNEL MARKER #144	3,192,728.4	13,835,592.3

HORIZONTAL CONTROL MONUMENTS					
NAME	PID	EASTING (X) NAD-83 TX-SC	NORTHING (Y) NAD-83 TX-SC	ELEV. (FT.) (NAVD88)	ELEV. (FT.) (MLLW)
NAD83, TEXAS SOUTH - CENTRAL ZONE, US SURVEY FEET					
TIDAL CONTROL					
HSC - CARPENTER BAYOU TO SIMS BAYOU					
J 1185	AW0902	3,170,409.08	13,836,479.04	4.4	4.3
HGSD 31	AW5532	3,204,626.75	13,852,649.36	18.9	18.8
877 0777C	D09988	3,152,837.44	13,830,815.32	29.4	29.2

SURVEY NOTES:

1. ALL SURVEYING WAS PERFORMED BY CAHAGAN & BRYANT ASSOCIATES. THESE DRAWINGS REPRESENT THE CONDITIONS THAT EXISTED AT THE TIME THE SURVEYS WERE PERFORMED. CARE TERMINAL WAS SURVEYED ON 06/06/2024.
2. CONTRACTOR SHALL VERIFY ACCURACY OF SURVEY CONTROL MONUMENTS PRIOR TO CONSTRUCTION. IMMEDIATELY REPORT ANY DISCREPANCIES TO ENGINEER.
3. HORIZONTAL COORDINATES ARE REFERENCED TO TEXAS STATE PLANE COORDINATE SYSTEM, SOUTH CENTRAL ZONE, NAD83, US SURVEY FEET.
4. ELEVATIONS ARE REFERENCED TO MEAN LOWER LOW WATER (MLLW).



LOCATION MAP - SURVEY CONTROL



THIS DRAWING PRINTED HALF SIZE



ISSUE	DATE	DESCRIPTION

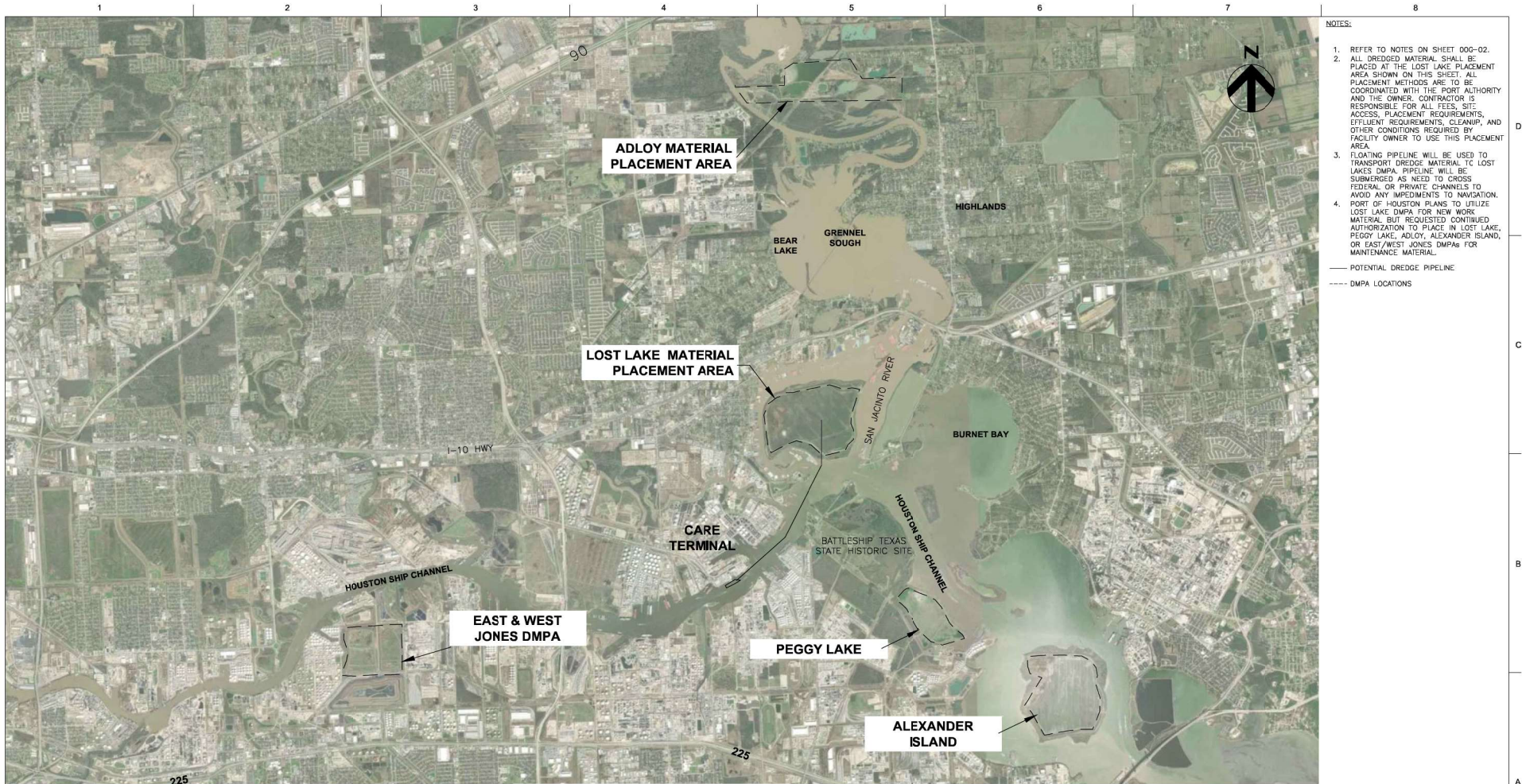
PROJECT MANAGER	LAURA Y. CAMPOS
DESIGNED BY	L. CAMPOS
DRAWN BY	A. AVILA
CHECKED BY	
PROJECT NUMBER	10236603



WHARF 2 BERTH EXPANSION
CARE TERMINAL
HOUSTON SHIP CHANNEL
SWG-1997-02927

CONTROL TABLES

FILENAME	000-02.DWG	SHEET	2 OF 8
SCALE			



- NOTES:**
1. REFER TO NOTES ON SHEET 00G-02.
 2. ALL DREDGED MATERIAL SHALL BE PLACED AT THE LOST LAKE PLACEMENT AREA SHOWN ON THIS SHEET. ALL PLACEMENT METHODS ARE TO BE COORDINATED WITH THE PORT AUTHORITY AND THE OWNER. CONTRACTOR IS RESPONSIBLE FOR ALL FEES, SITE ACCESS, PLACEMENT REQUIREMENTS, EFFLUENT REQUIREMENTS, CLEANUP, AND OTHER CONDITIONS REQUIRED BY FACILITY OWNER TO USE THIS PLACEMENT AREA.
 3. FLOATING PIPELINE WILL BE USED TO TRANSPORT DREDGE MATERIAL TO LOST LAKE DMPA. PIPELINE WILL BE SUBMERGED AS NEEDED TO CROSS FEDERAL OR PRIVATE CHANNELS TO AVOID ANY IMPEDIMENTS TO NAVIGATION.
 4. PORT OF HOUSTON PLANS TO UTILIZE LOST LAKE DMPA FOR NEW WORK MATERIAL BUT REQUESTED CONTINUED AUTHORIZATION TO PLACE IN LOST LAKE, PEGGY LAKE, ADLOY, ALEXANDER ISLAND, OR EAST/WEST JONES DMPAs FOR MAINTENANCE MATERIAL.
- POTENTIAL DREDGE PIPELINE
- - - DMPA LOCATIONS

DREDGE MATERIAL PLACEMENT AREAS
0 5500' 11000'

THIS DRAWING PRINTED HALF SIZE



PROJECT MANAGER	LAURA Y. CAMPOS
DESIGNED BY	L. CAMPOS
DRAWN BY	A. AVILA
CHECKED BY	
PROJECT NUMBER	10236603

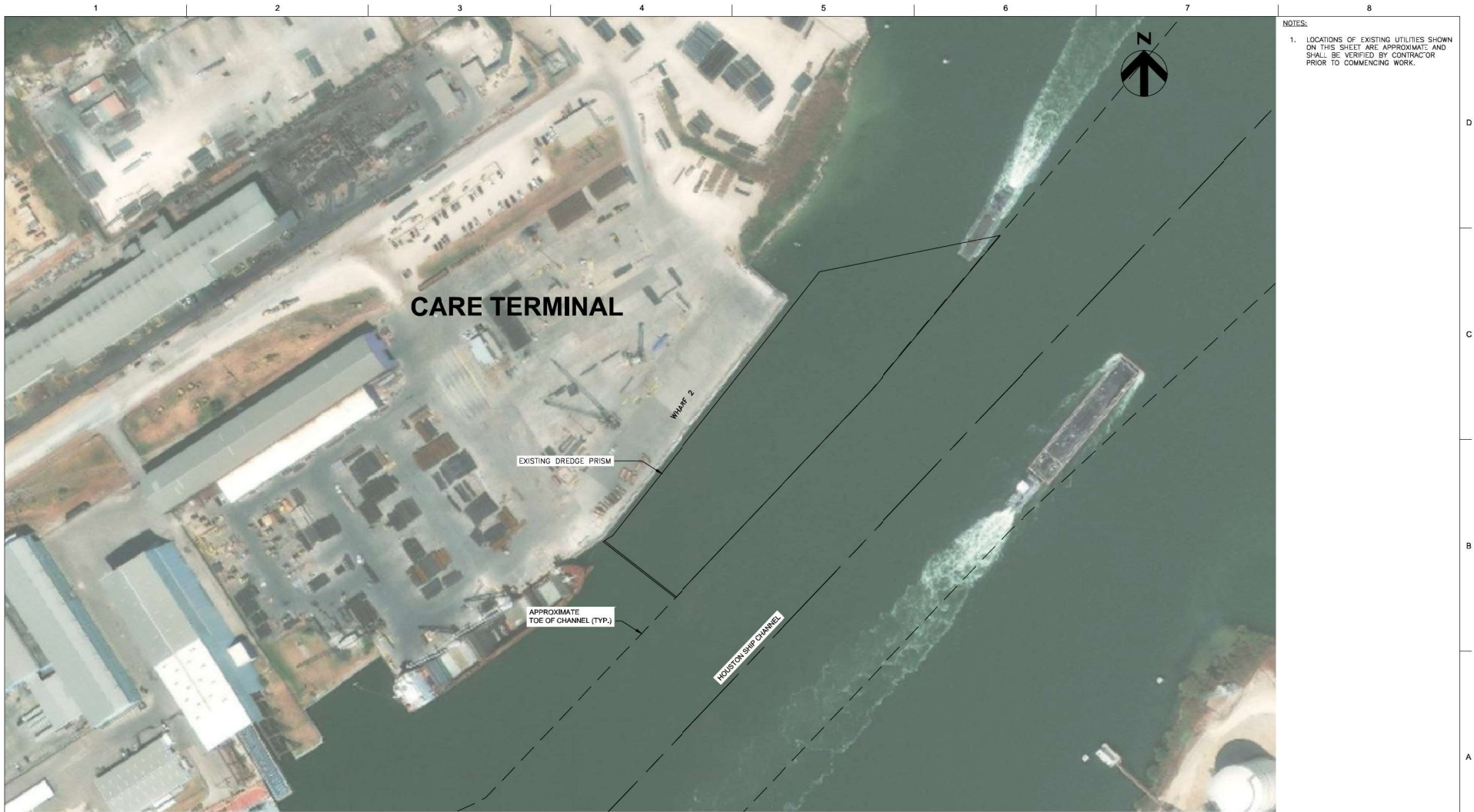
ISSUE	DATE	DESCRIPTION



WHARF 2 BERTH EXPANSION
CARE TERMINAL
HOUSTON SHIP CHANNEL
SWG-1997-02927

DREDGE MATERIAL PLACEMENT AREAS

FILENAME | 00G-03.DWG | SHEET
SCALE | | **3 OF 8**



NOTES:
1. LOCATIONS OF EXISTING UTILITIES SHOWN ON THIS SHEET ARE APPROXIMATE AND SHALL BE VERIFIED BY CONTRACTOR PRIOR TO COMMENCING WORK.

CARE TERMINAL

WHARF 2

EXISTING DREDGE PRISM

APPROXIMATE TOE OF CHANNEL (TYP.)

HOUSTON SHIP CHANNEL

OVERALL SITE PLAN

SCALE: 0 150' 300'

THIS DRAWING PRINTED HALF SIZE



Texas P.E. Firm
Registration No. F-754

ISSUE	DATE	DESCRIPTION

PROJECT MANAGER	LAURA Y. CAMPOS
DESIGNED BY	L. CAMPOS
DRAWN BY	A. AVILA
CHECKED BY	
PROJECT NUMBER	10236603



**WHARF 2 BERTH EXPANSION
CARE TERMINAL
HOUSTON SHIP CHANNEL
SWG-1997-02927**

OVERALL SITE PLAN

FILENAME | 01C-01.DWG
SCALE |

SHEET
4 OF 8



THIS DRAWING PRINTED HALF SIZE



ISSUE	DATE	DESCRIPTION

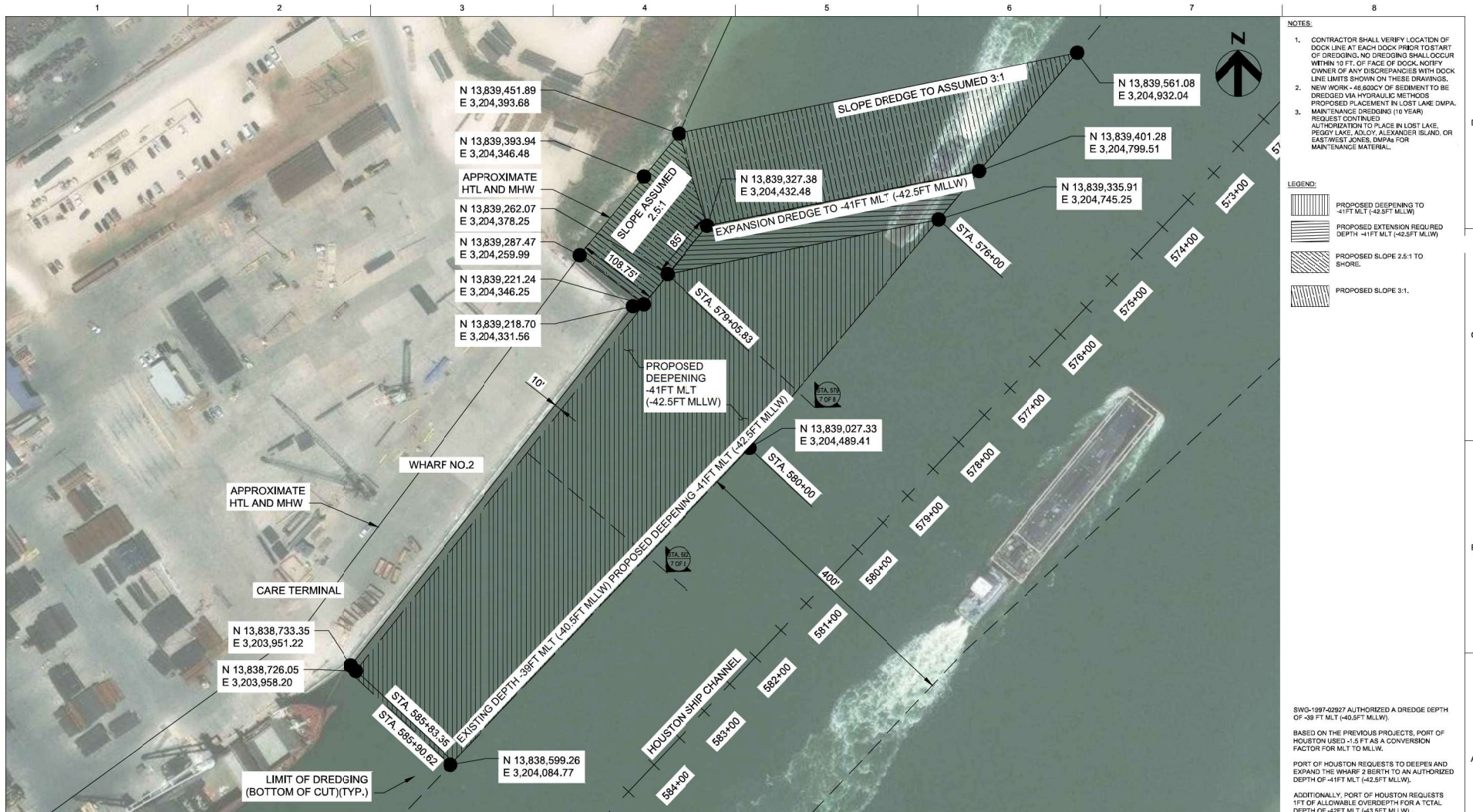
PROJECT MANAGER	LAURA Y. CAMPOS
DESIGNED BY	L. CAMPOS
DRAWN BY	A. AVILA
CHECKED BY	
PROJECT NUMBER	10236603



WHARF 2 BERTH EXPANSION
CARE TERMINAL
HOUSTON SHIP CHANNEL
SWG-1997-02927

EXISTING CONDITIONS

FILENAME	01C-02.DWG	SHEET	5 OF 8
SCALE			



PROJECT LAYOUT
SCALE: 0 100 200' 3/4 OF 8

THIS DRAWING PRINTED HALF SIZE



ISSUE	DATE	DESCRIPTION

PROJECT MANAGER	LAURA Y. CAMPOS
DESIGNED BY	L. CAMPOS
DRAWN BY	A. AVILA
CHECKED BY	
PROJECT NUMBER	10236603

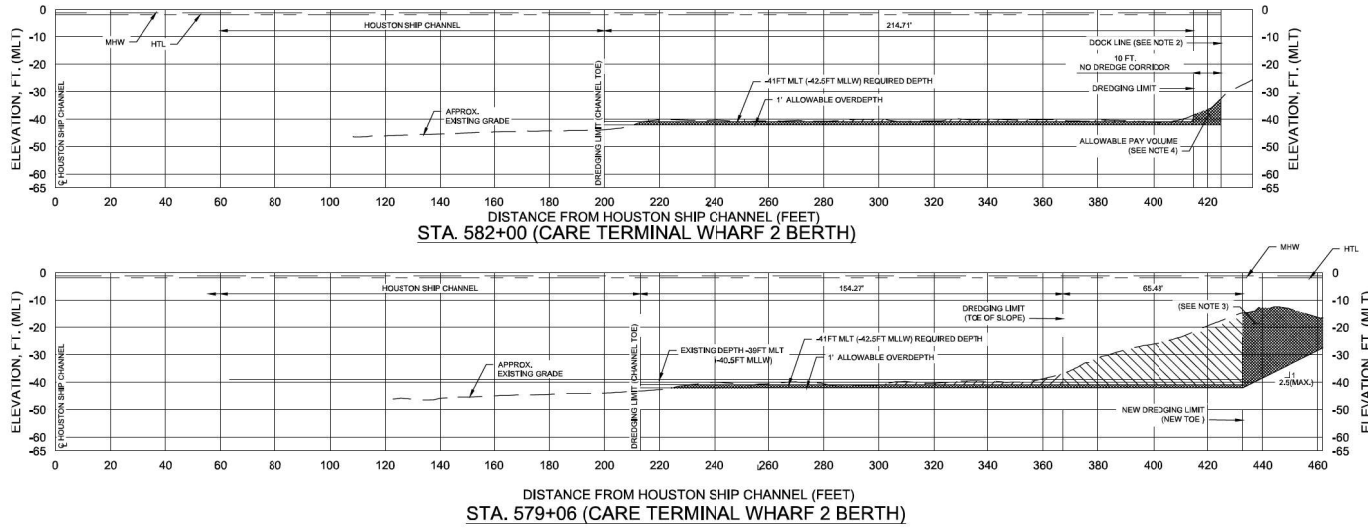


**WHARF 2 BERTH EXPANSION
CARE TERMINAL
HOUSTON SHIP CHANNEL
SWG-1997-02927**

PROJECT LAYOUT

FILENAME: 02C-01.DWG
SCALE:

SHEET
6 OF 8



- NOTES:
- CROSS SECTIONS VIEWED LOOKING TOWARDS INCREASING STATIONS.
 - CONTRACTOR SHALL VERIFY LOCATION OF DOCK LINE AT EACH DOCK PRIOR TO START OF DREDGING. NO DREDGING SHALL OCCUR WITHIN 10 FT. OF FACE OF DOCK. NOTIFY OWNER OF ANY DISCREPANCIES WITH DOCK LINE OFFSETS SHOWN ON THESE DRAWINGS.
 - AT LOCATIONS NOT ADJACENT TO EXISTING DOCK, NO PHYSICAL DREDGING SHALL BE PERFORMED BEYOND DESIGNATED "DREDGING LIMIT" LINE. HOWEVER, MATERIAL THAT NATURALLY FALLS INTO THE DREDGING TEMPLATE FROM ADJACENT SLOPE SHALL BE REMOVED. MATERIAL ORIGINATING FROM ALLOWABLE OVERDEPTH LIMITS MAY BE INCLUDED IN PAY VOLUMES.
 - LIMIT OF ACTIVE DREDGING SHALL BE 10 FT FROM DOCK LINE. NO ACTIVE DREDGING SHALL BE PERFORMED WITHIN THE 10 FT "NO DREDGE CORRIDOR" BETWEEN DOCK AND SPECIFIED DREDGING LIMIT. HOWEVER, MATERIAL THAT NATURALLY FALLS INTO THE DREDGING TEMPLATE FROM THE "NO DREDGE CORRIDOR" MAY BE INCLUDED IN PAY VOLUME. MATERIAL BEYOND THE SHOWN ALLOWABLE OVERDEPTH LIMIT SHALL NOT BE INCLUDED IN PAY VOLUME.

- LEGEND:
- REQUIRED DREDGING VOLUME IN CY
 - PROPOSED EXPANSION VOLUME IN CY
 - ALLOWABLE OVERDEPTH
 - APPROXIMATE EXISTING GRADE
 - DREDGING LIMITS (CUT TEMPLATE)

DREDGE VOLUMES:
NEW WORK DEEPENING 12,900 CY
NEW WORK EXPANSION 33,700 CY

SWG-1997-02927 AUTHORIZED A DREDGE DEPTH OF -38 FT MTL (-40.5 FT MLLW).
BASED ON THE PREVIOUS PROJECTS, PORT OF HOUSTON USED +1.5 FT AS A CONVERSION FACTOR FOR MTL TO MLLW.
PORT OF HOUSTON REQUESTS TO DEEPEN AND EXPAND THE WHARF 2 BERTH TO AN AUTHORIZED DEPTH OF -41 FT MTL (-42.5 FT MLLW).
ADDITIONALLY, PORT OF HOUSTON REQUESTS 1 FT OF ALLOWABLE OVERDEPTH FOR A TOTAL DEPTH OF -42 FT MTL (-43.5 FT MLLW).

THIS DRAWING PRINTED HALF SIZE



Texas P.E. Firm
Registration No. F-754

ISSUE	DATE	DESCRIPTION

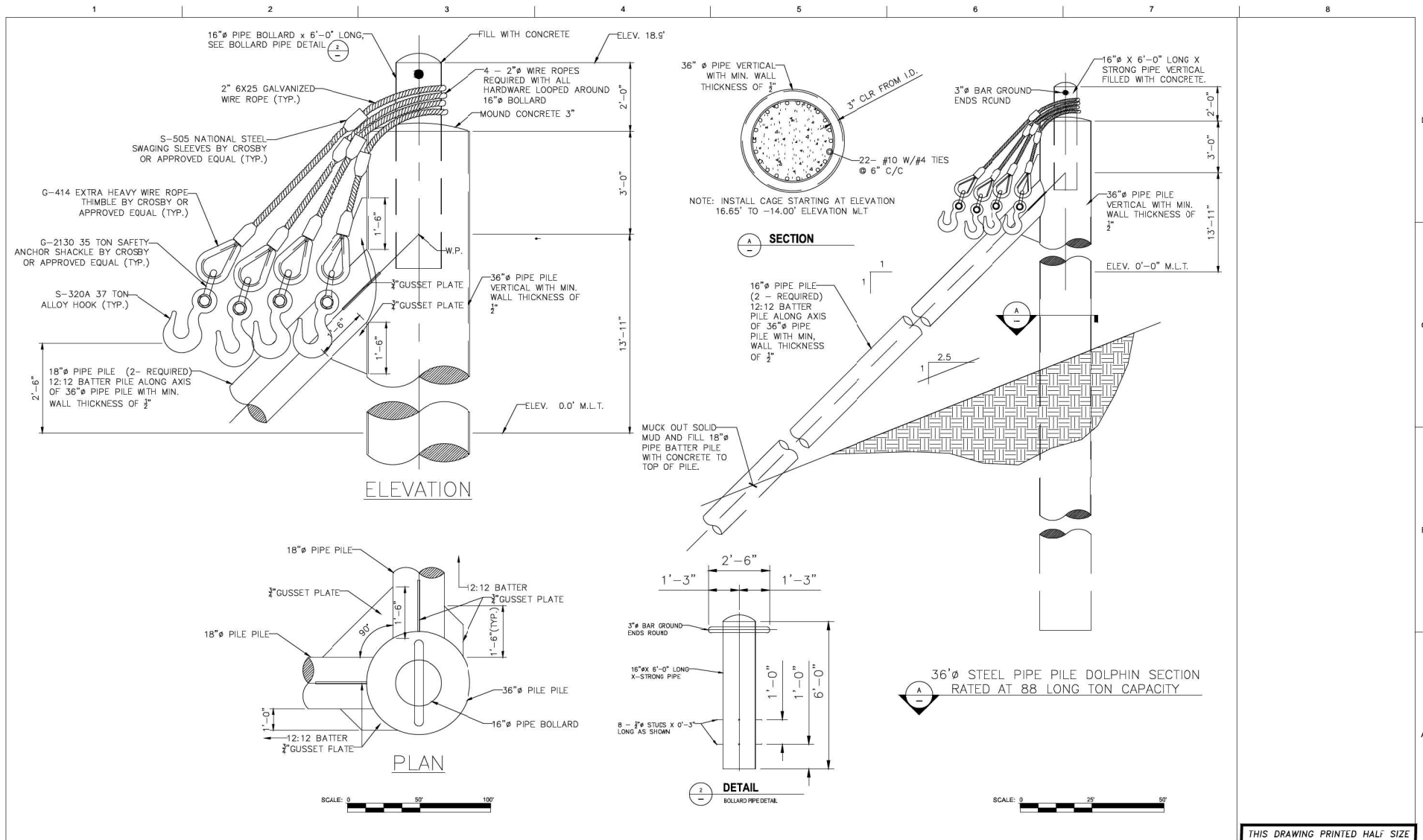
PROJECT MANAGER	LAURA Y. CAMPOS
DESIGNED BY	L. CAMPOS
DRAWN BY	A. AVILA
CHECKED BY	
PROJECT NUMBER	10236603



WHARF 2 BERTH EXPANSION
CARE TERMINAL
HOUSTON SHIP CHANNEL
SWG-1997-02927

CROSS-SECTIONS

FILENAME | 03C-01.DWG | SHEET
SCALE | | 7 OF 8



PROJECT MANAGER	LAURA Y. CAMPOS	
DESIGNED BY	L. CAMPOS	
DRAWN BY	A. AVILA	
CHECKED BY		
ISSUE	DATE	DESCRIPTION
PROJECT NUMBER	10236603	



WHARF 2 BERTH EXPANSION
CARE TERMINAL
HOUSTON SHIP CHANNEL
SWG-1997-02927

PILE TYPICAL SECTION

FILENAME | 04C-01.DWG
SCALE | AS NOTED

SHEET
8 OF 8