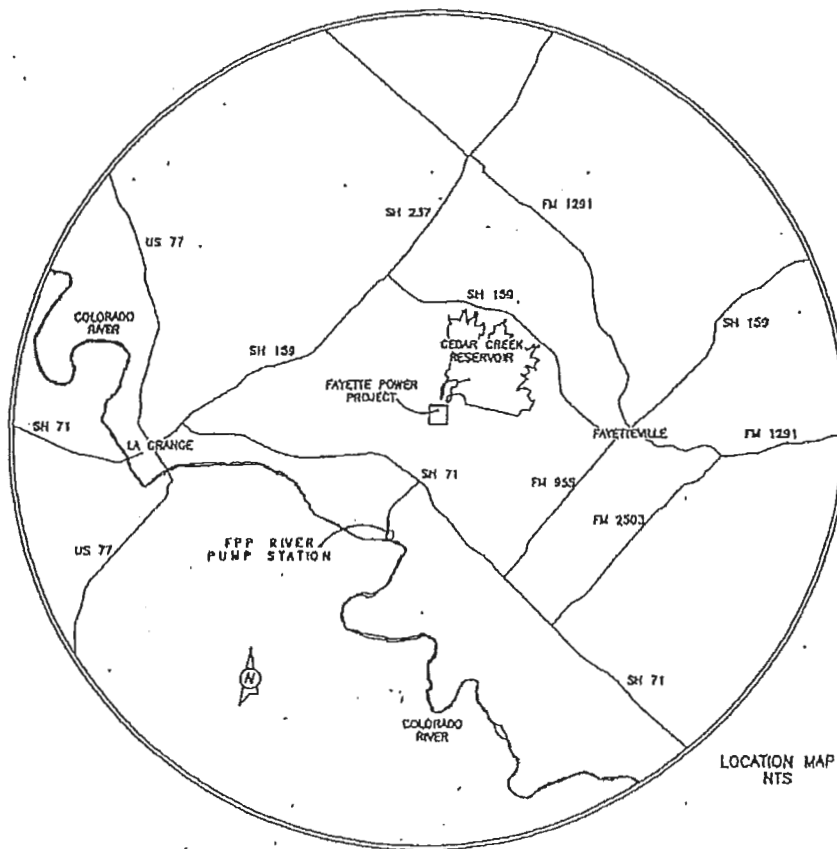


SWG-2007-00315
Lower Colorado River Authority
Page 1 of 8

FPP RIVER PUMP STATION PUMP INTAKE AND SURROUNDING AREA



LOCATION MAP
 NTS

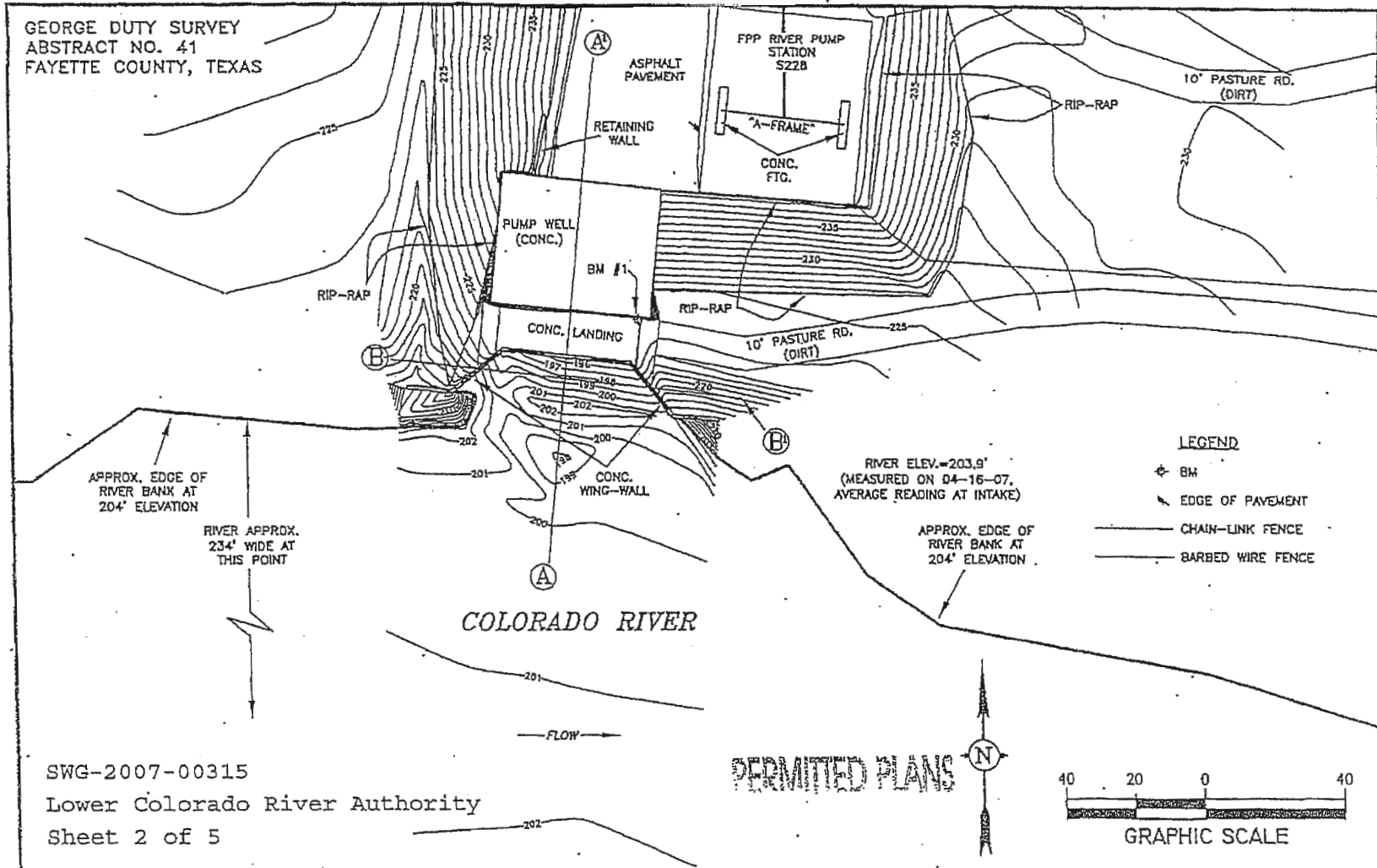
PERMITTED PLANS

SWG-2007-00315
 Lower Colorado River Authority
 Sheet 1 of 5



FPP RIVER PUMP STATION 6.4 MI. EAST OF THE CITY OF LAGRANGE FAYETTE COUNTY, TEXAS		FIGURE 1 VICINITY MAP FPP RIVER PUMP STATION
DATE: 5/15/2007	W.O.#: 1190628	
DRAWN BY: M. ALLEN	SHEET 1 OF 6	

SWG-2007-00315
Lower Colorado River Authority
Page 2 of 8



SWG-2007-00315
 Lower Colorado River Authority
 Sheet 2 of 5

PERMITTED PLANS

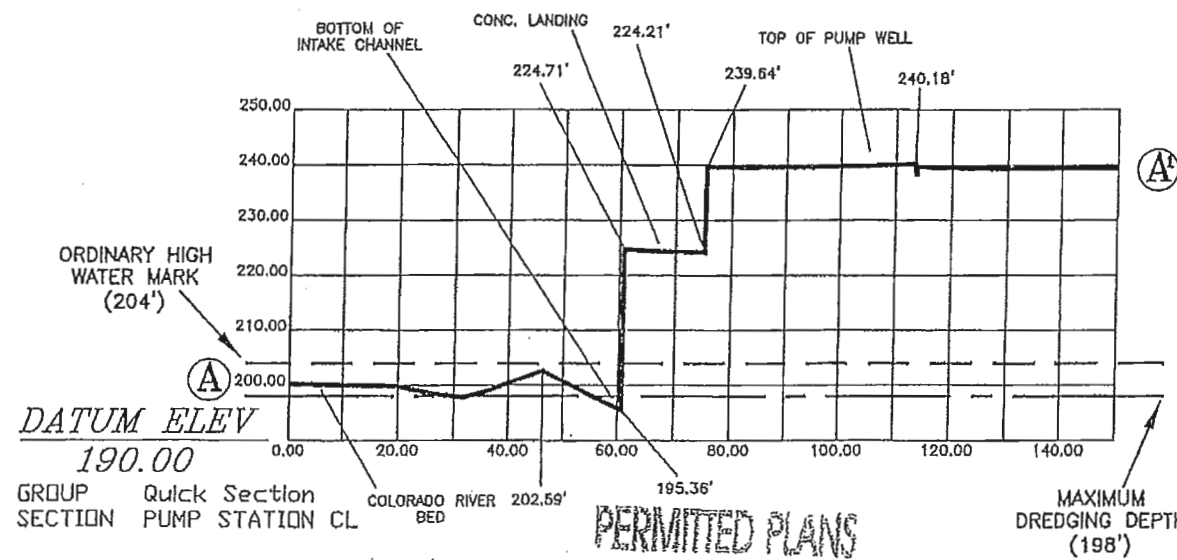
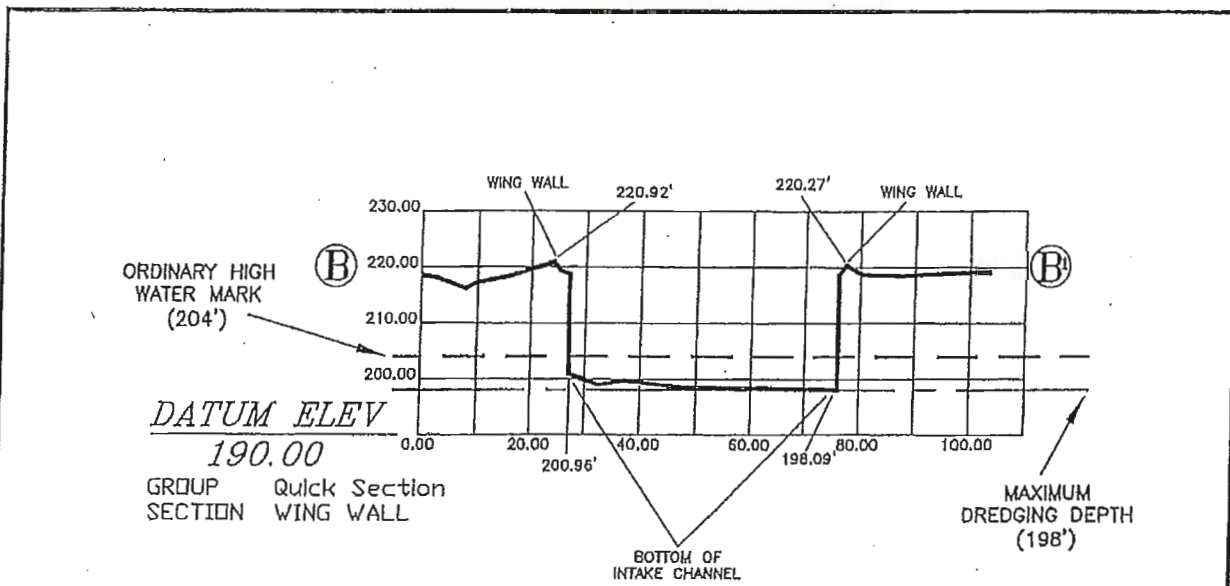
FIGURE 2
 TOPOGRAPHIC MAP
 FPP RIVER PUMP STATION



FPP RIVER PUMP STATION 6.4 MI. EAST OF THE CITY OF LAGRANGE FAYETTE COUNTY, TEXAS	
DATE: 5/15/2007	W.O.#: 1190628
DRAWN BY: M. ALLEN	SHEET 2 OF 6

DEC 18 2018

SWG-2007-00315
Lower Colorado River Authority
 Page 3 of 8



PERMITTED PLANS

SWG-2007-00315
 Lower Colorado River Authority
 Sheet 3 of 5

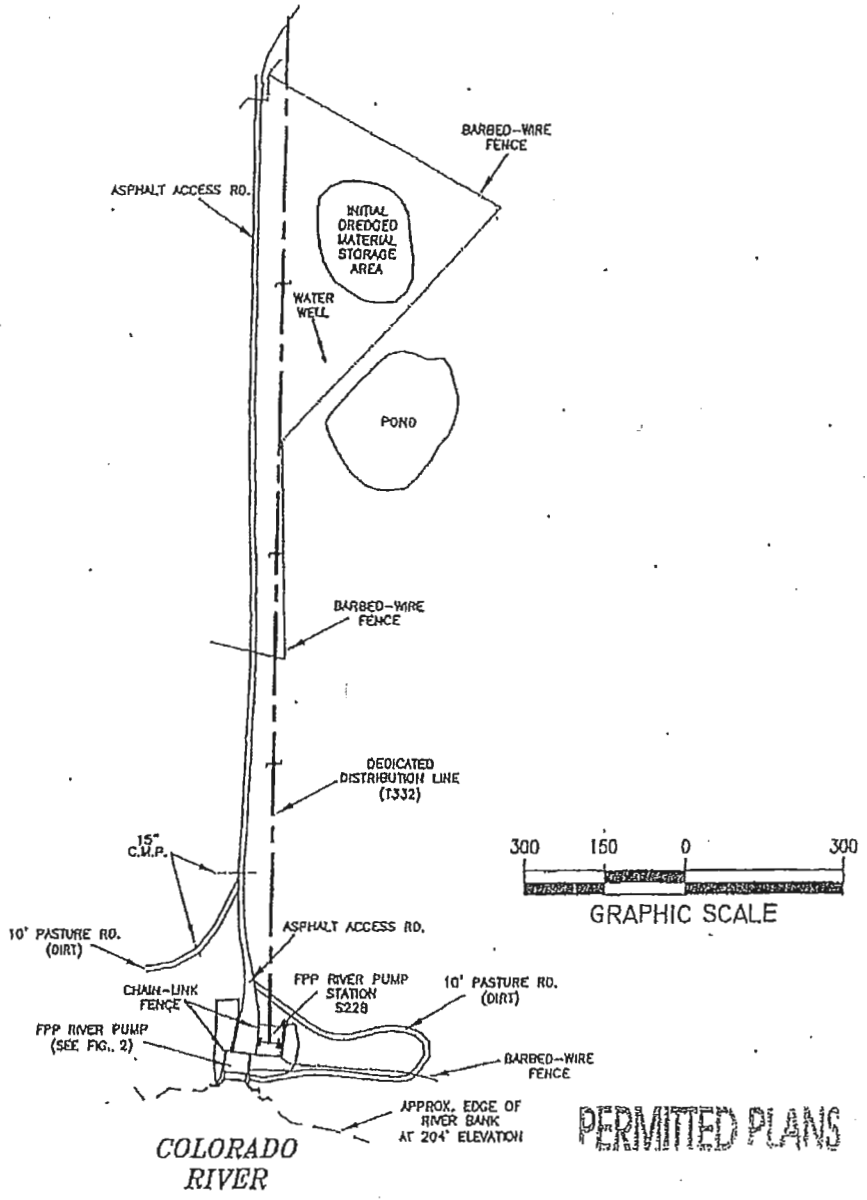
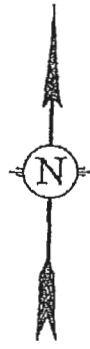


FPP RIVER PUMP STATION 6.4 MI. EAST OF THE CITY OF LAGRANGE FAYETTE COUNTY, TEXAS	
DATE: 5/15/2007	W.O.#: 1190628
DRAWN BY: M. ALLEN	SHEET 3 OF 6

FIGURE 3
CROSS SECTIONS
FPP RIVER PUMP STATION

SWG-2007-00315
Lower Colorado River Authority
Page 4 of 8

GEORGE DUTY SURVEY
ABSTRACT NO. 41



PERMITTED PLANS

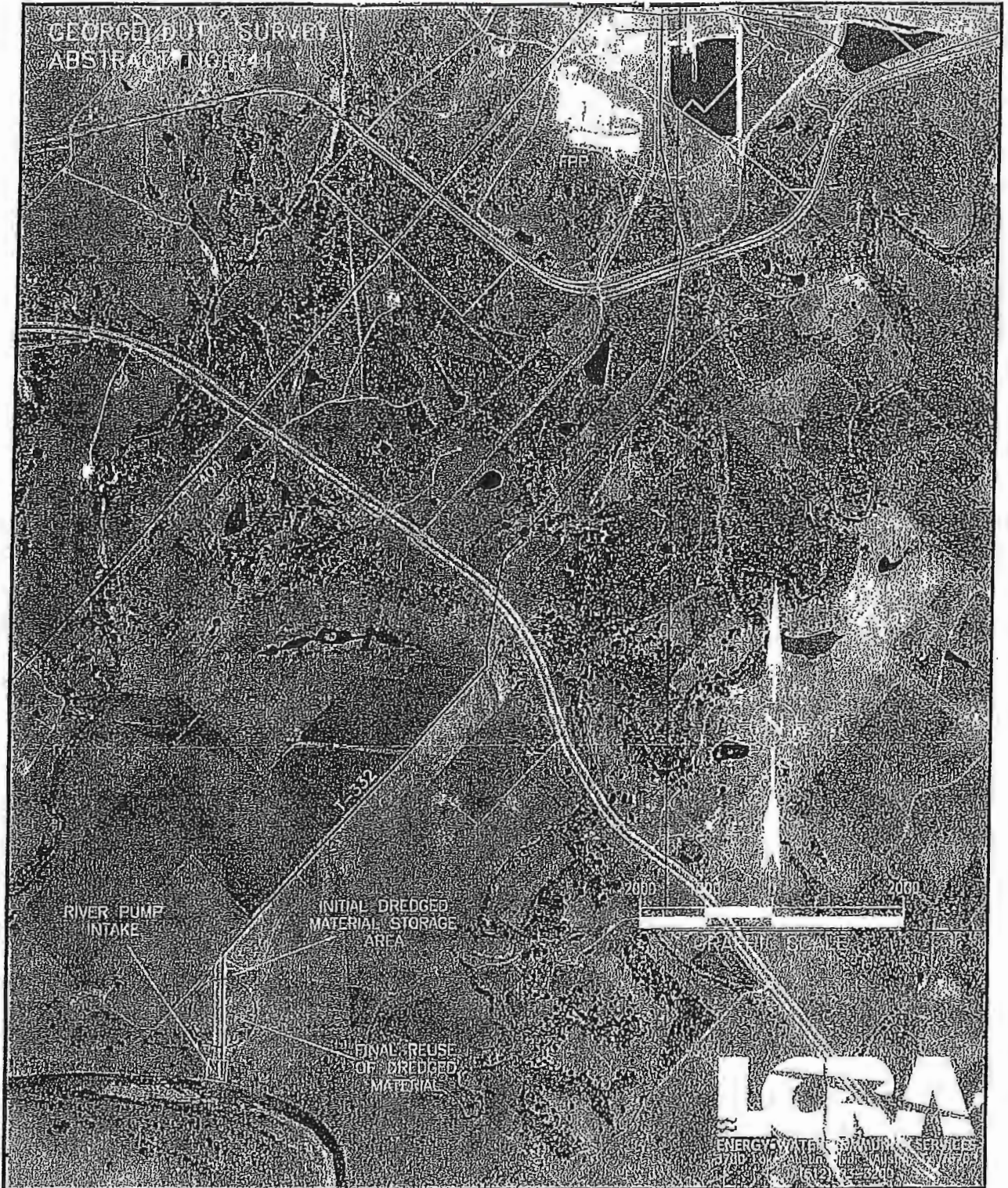


SWG-2007-00315
Lower Colorado River Authority
Sheet 4 of 5

FPP RIVER PUMP STATION 6.4 MI. EAST OF THE CITY OF LAGRANGE FAYETTE COUNTY, TEXAS	
DATE: 5/15/2007	W.O.#: 1190628
DRAWN BY: M. ALLEN	SHEET 4 OF 6

FIGURE 4
INITIAL DREDGED MATERIAL
STORAGE AREA

SWG-2007-00315
Lower Colorado River Authority
Page 5 of 8



FPP RIVER PUMP STATION 6.4 MI. EAST OF THE CITY OF LAGRANGE FAYETTE COUNTY, TEXAS		PERMITTED PLANS FIGURE 5 AERIAL PHOTO OF FPP RIVER PUMP STATION
DATE: 5/15/2007	W.O.#: 1190628	
DRAWN BY: M. ALLEN	SHEET 5 OF 6	

SWG-2007-00315
 LOWER COLORADO RIVER AUTHORITY
 SHEET 5 OF 5

SWG-2007-00315
Lower Colorado River Authority
Page 6 of 8

Threatened and Endangered Species

Potential habitat exists in and around the pump station and intake for multiple species of state listed and federal candidate freshwater mussels. Before any dredging operations occur, LCRA or its long-term environmental contractors will conduct a survey and relocation for these mussels in accordance with our existing Texas Parks and Wildlife relocation permit.

Cultural Resources

FPP River Intake Dredging activity is not expected to impact any culturally significant resources due to the localized nature of the sediment removal. The riverbank at this location has been heavily altered over the years by the permitted installation of the pump plant and intake structure.



Pump Station

Intake



SWG-2007-00315
Lower Colorado River Authority
Page 8 of 8

Colorado River