

Legend

Galveston District Boundary Proposed Well Location

Note

All coordinates shown are referenced to geographic coordinate system (NAD83).

Reference

Base map comprised of ESRI StreetMap USA data. Galveston District boundary obtained from the US Army Corps of Engineers (USACE) Regulatory Boundary Database.

Vicinity Map

Joint Permit Application
Johnson Bayou, Cameron Parish, Louisiana

ConocoPhillips Company
Project Gumbo South

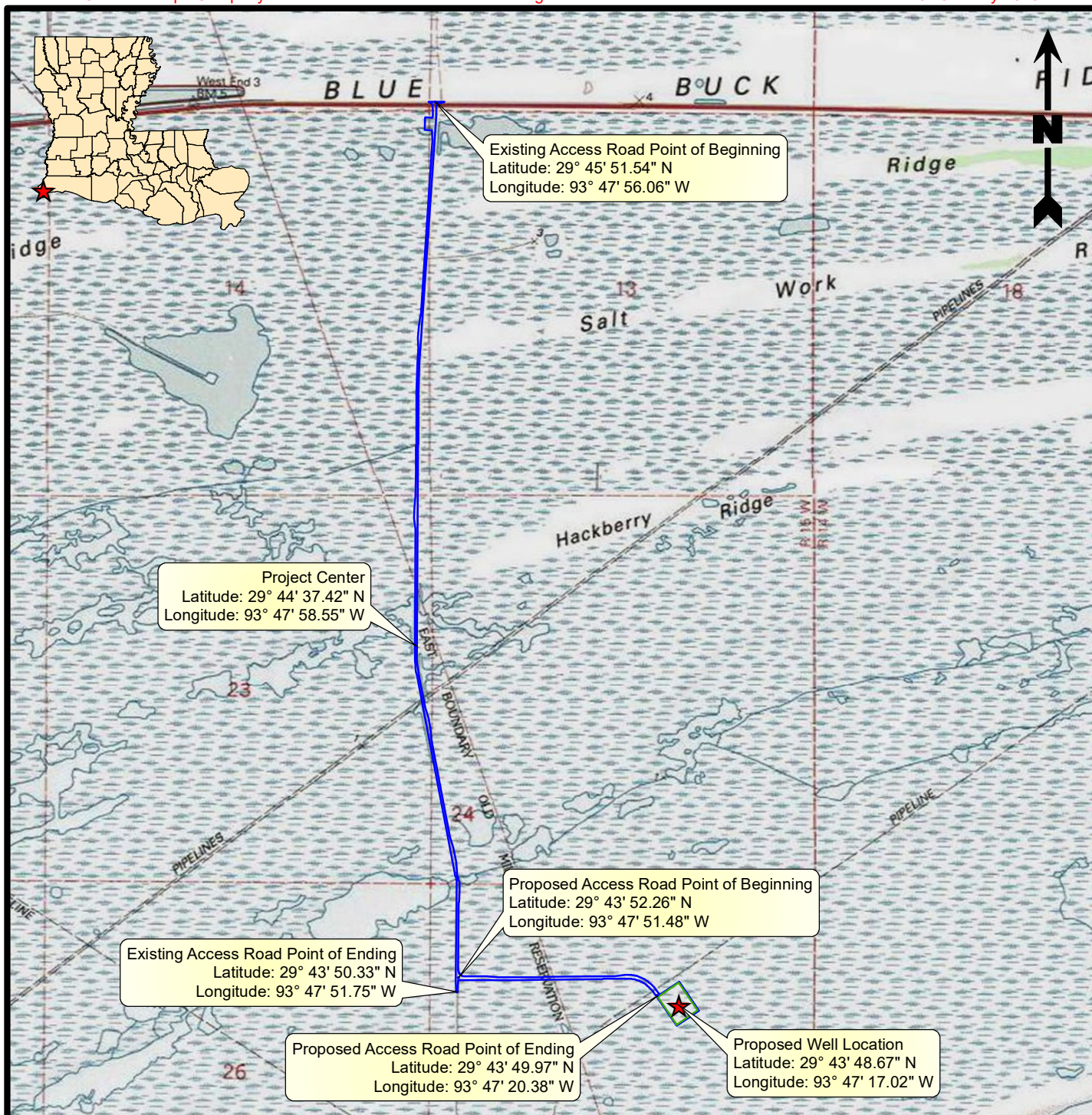


PROVIDENCE

Drawn By	LMM	12/04/23
Checked By	LMH	12/04/23
Approved By	TCK	12/04/23

Project Number 1429-004
Drawing Number 1429-004-A101

1
Figure



Legend

- Proposed Project Area (16.18 Acres)
- Proposed Well Pad
- ★ Proposed Well Location

Note

All coordinates shown are referenced to geographic coordinate system (NAD83).

Reference

Base map comprised of U.S.G.S. 7.5-minute topographic maps, "West of Johnson Bayou, LA" and "Texas Point, TX".

Site Location Map

Joint Permit Application
Johnson Bayou, Cameron Parish, Louisiana

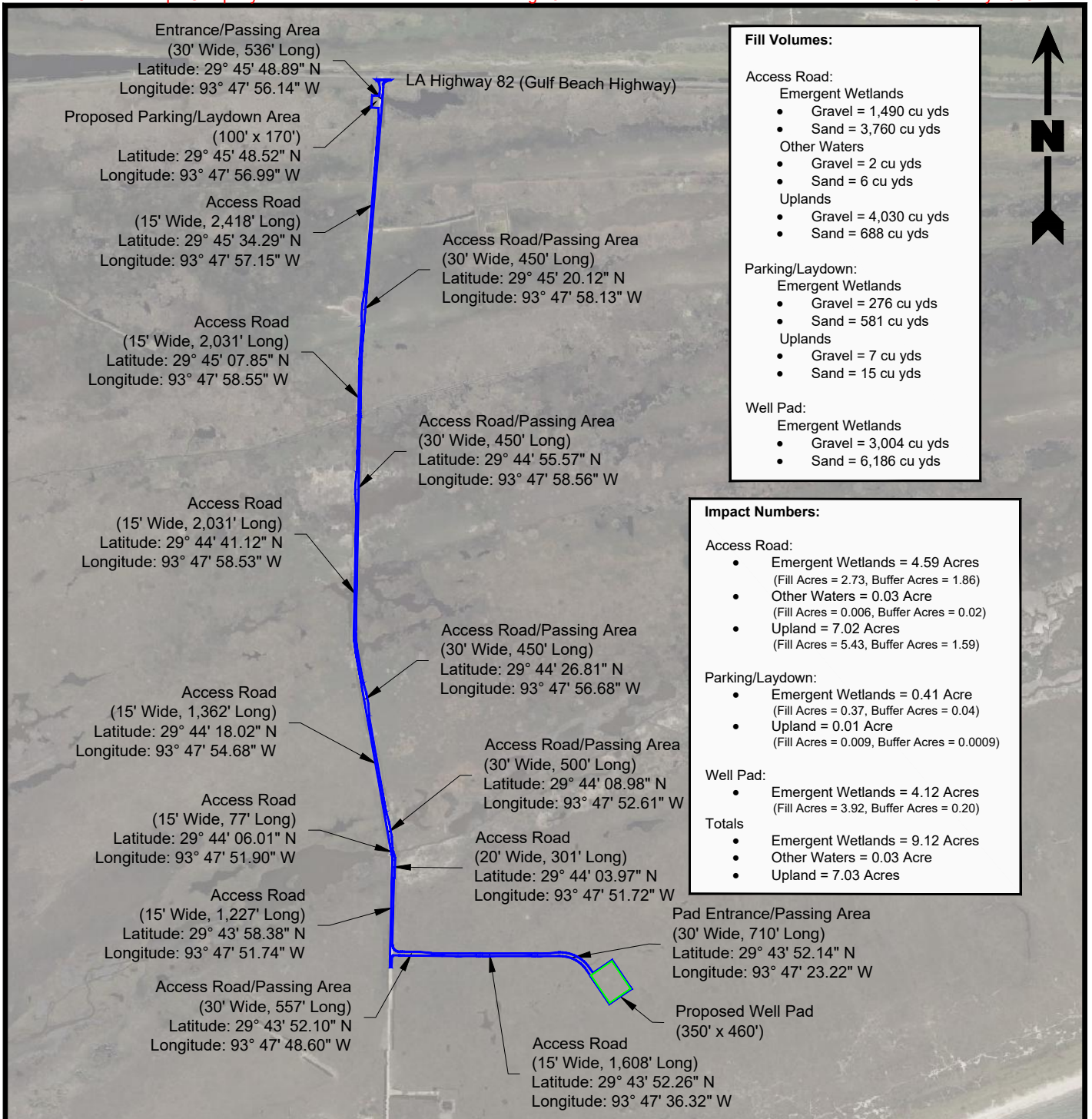
ConocoPhillips Company
Project Gumbo South



PROVIDENCE

Drawn By	LMM	12/04/23
Checked By	LMH	12/04/23
Approved By	TCK	12/04/23

Project Number 1429-004	2 Figure
Drawing Number 1429-004-A102	



Fill Volumes:

Access Road:

- Emergent Wetlands
 - Gravel = 1,490 cu yds
 - Sand = 3,760 cu yds
- Other Waters
 - Gravel = 2 cu yds
 - Sand = 6 cu yds
- Uplands
 - Gravel = 4,030 cu yds
 - Sand = 688 cu yds

Parking/Laydown:

- Emergent Wetlands
 - Gravel = 276 cu yds
 - Sand = 581 cu yds
- Uplands
 - Gravel = 7 cu yds
 - Sand = 15 cu yds

Well Pad:

- Emergent Wetlands
 - Gravel = 3,004 cu yds
 - Sand = 6,186 cu yds

Impact Numbers:

Access Road:

- Emergent Wetlands = 4.59 Acres
(Fill Acres = 2.73, Buffer Acres = 1.86)
- Other Waters = 0.03 Acre
(Fill Acres = 0.006, Buffer Acres = 0.02)
- Upland = 7.02 Acres
(Fill Acres = 5.43, Buffer Acres = 1.59)

Parking/Laydown:

- Emergent Wetlands = 0.41 Acre
(Fill Acres = 0.37, Buffer Acres = 0.04)
- Upland = 0.01 Acre
(Fill Acres = 0.009, Buffer Acres = 0.0009)

Well Pad:

- Emergent Wetlands = 4.12 Acres
(Fill Acres = 3.92, Buffer Acres = 0.20)

Totals

- Emergent Wetlands = 9.12 Acres
- Other Waters = 0.03 Acre
- Upland = 7.03 Acres

2,000 0 2,000

Scale: 1" = 2,000'

Legend

 Proposed Project Area / Limits of Clearing (16.18 Acres)

 Proposed Well Pad

Note

All coordinates shown are referenced to geographic coordinate system (NAD83).

Reference

Base map comprised of Bing Maps aerial imagery from (c) 2023 Microsoft Corporation and its data suppliers, exported 11/16/23.

Site Plan

Joint Permit Application
Johnson Bayou, Cameron Parish, Louisiana

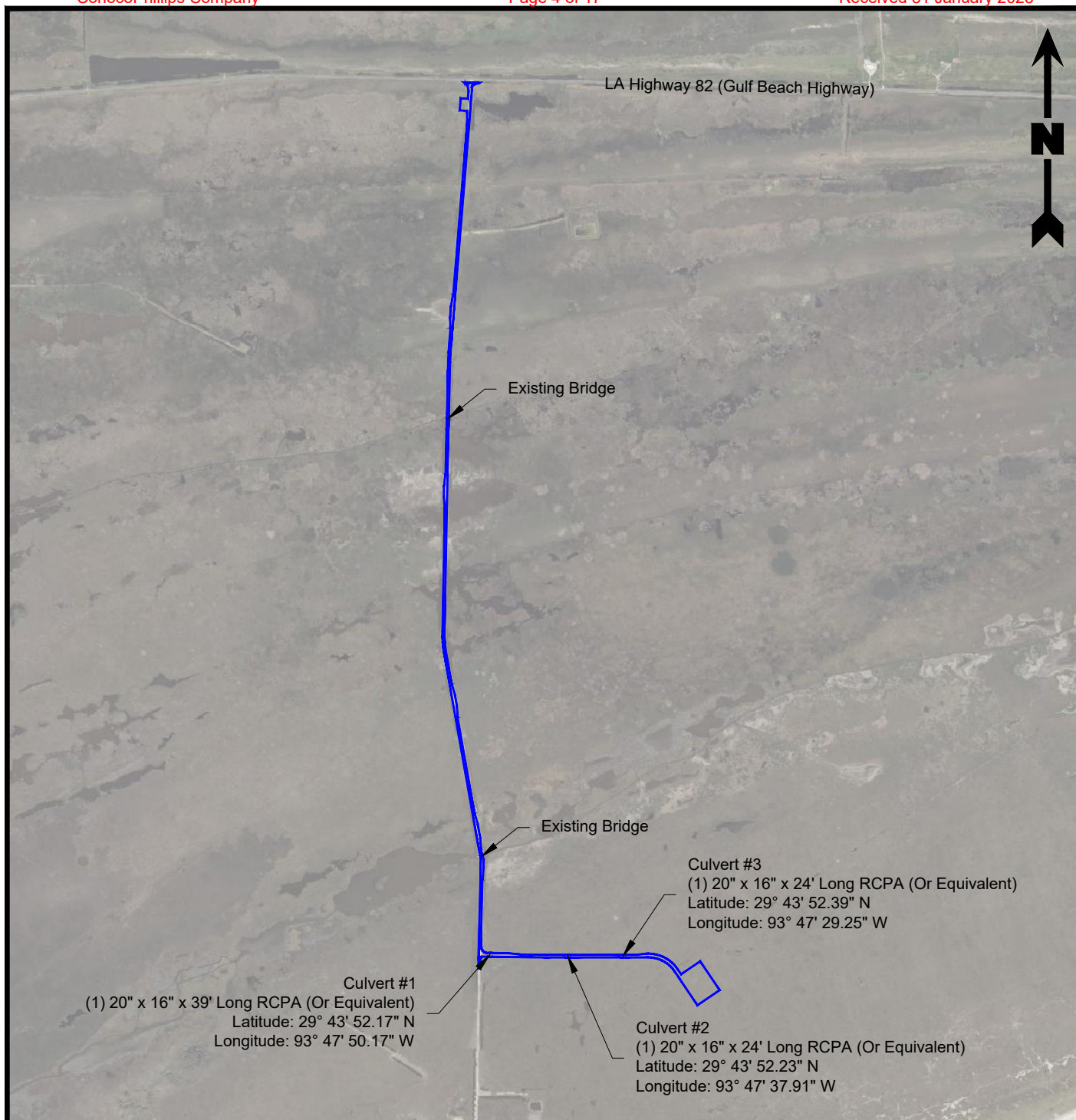
ConocoPhillips Company

Project Gumbo South



Drawn By	LMM	12/06/23
Checked By	LMH	12/06/23
Approved By	TCK	12/06/23

Project Number	1429-004	3 Figure
Drawing Number	1429-004-A103	



2,000 0 2,000



Scale: 1" = 2,000'

Legend

Proposed Project Area / Limits of Clearing (16.18 Acres)

Notes

- All coordinates shown are referenced to geographic coordinate system (NAD83).
- No grubbing or stripping of land is anticipated for construction of the project.

Reference

Base map comprised of Bing Maps aerial imagery from (c) 2023 Microsoft Corporation and its data suppliers, exported 11/15/23.

Site Plan (Culvert Locations)

Joint Permit Application
Johnson Bayou, Cameron Parish, Louisiana

ConocoPhillips Company

Project Gumbo South

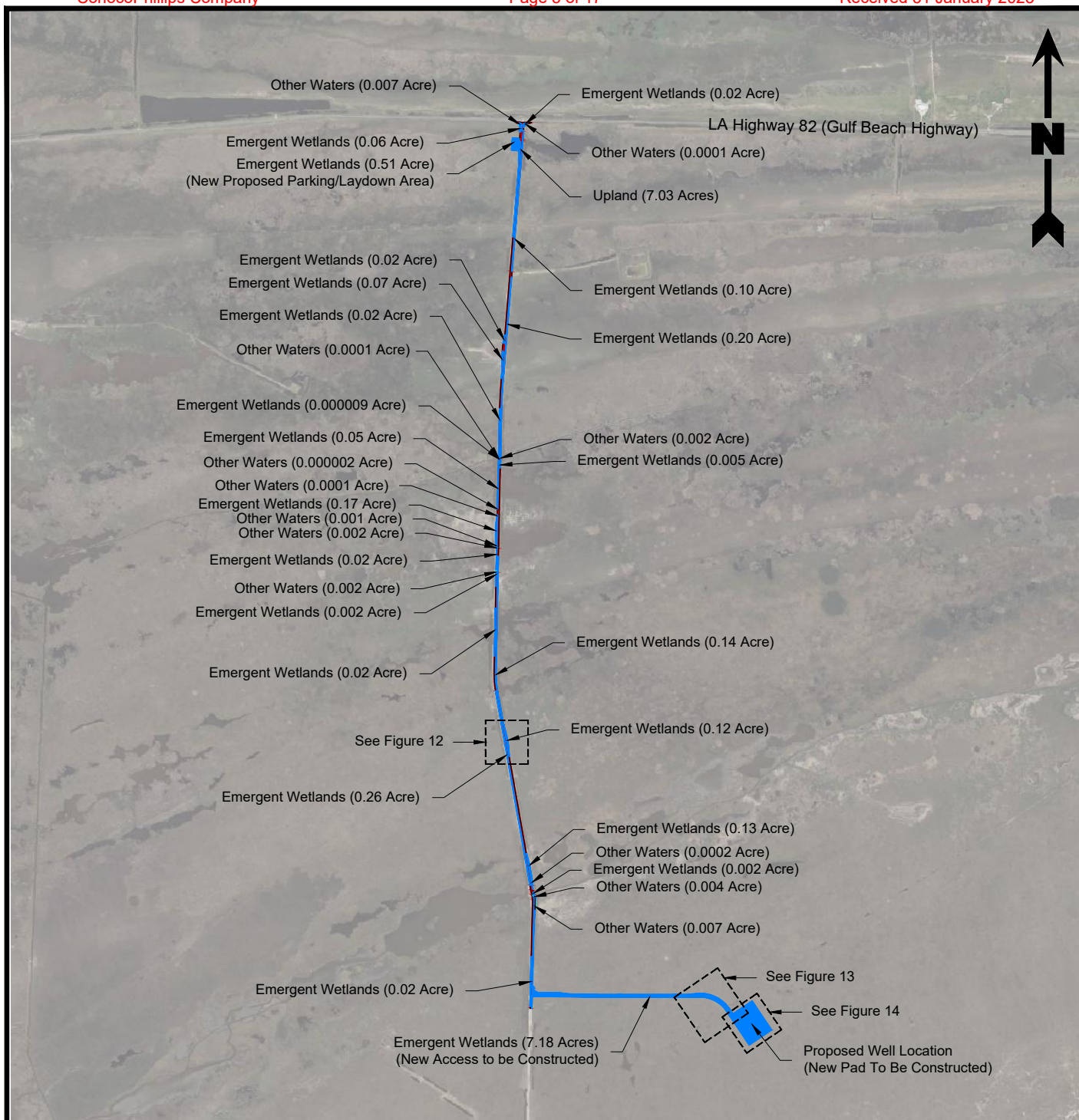


Drawn By	LMM	12/04/23
Checked By	LMH	12/04/23
Approved By	TCK	12/04/23

Project Number 1429-004
Drawing Number 1429-004-A104

4

Figure



2,000 0 2,000

Scale: 1" = 2,000'

Legend

- Proposed Project Area (16.18 Acres)
- Emergent Wetlands (Total = 9.12 Acres)
- Other Waters (Total = 0.03 Acre)
- Upland (Total = 7.03 Acres)

Reference

Base map comprised of Bing Maps aerial imagery from (c) 2023 Microsoft Corporation and its data suppliers, exported 11/15/23.

Site Plan (Habitat Classifications)

Joint Permit Application
Johnson Bayou, Cameron Parish, Louisiana

ConocoPhillips Company
Project Gumbo South



PROVIDENCE

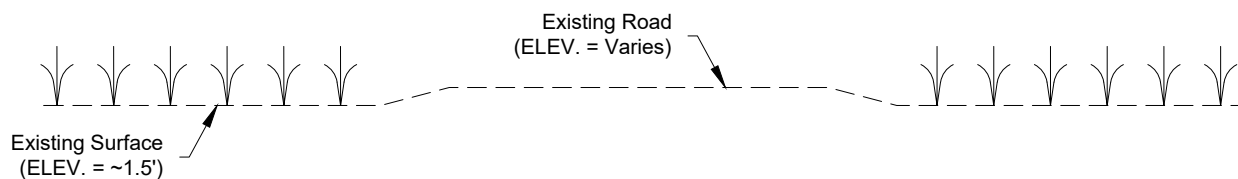
Drawn By	LMM	01/31/24
Checked By	LMH	01/31/24
Approved By	TCK	01/31/24

Project Number
1429-004

Drawing Number
1429-004-A154

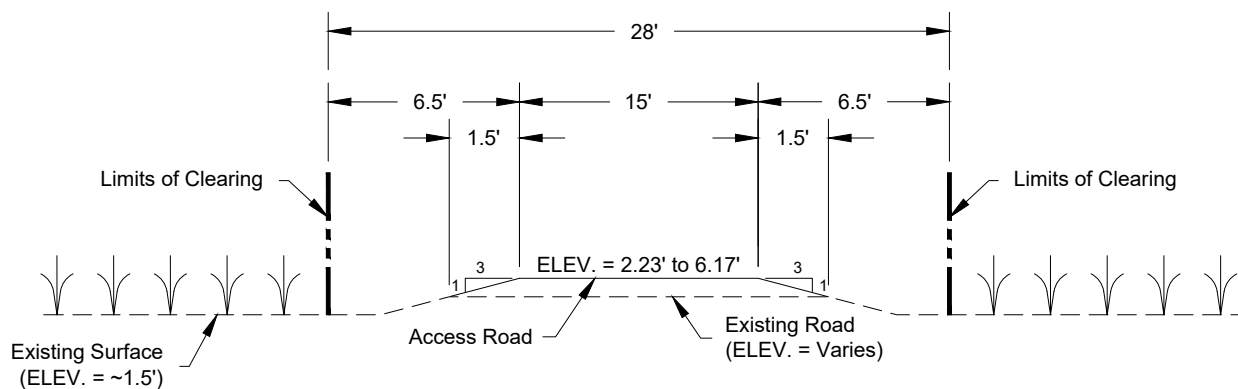
5

Figure



Pre-Construction

Not to Scale



Post-Construction

Not to Scale

Notes

- Elevations (ELEV.) are referenced to North American Vertical Datum 1988 (NAVD88).
- Water levels vary from no visible standing water to shallow inundation based on recent precipitation. No detailed water level history available.

North/South Access Road Typical Sections

Joint Permit Application
Johnson Bayou, Cameron Parish, Louisiana

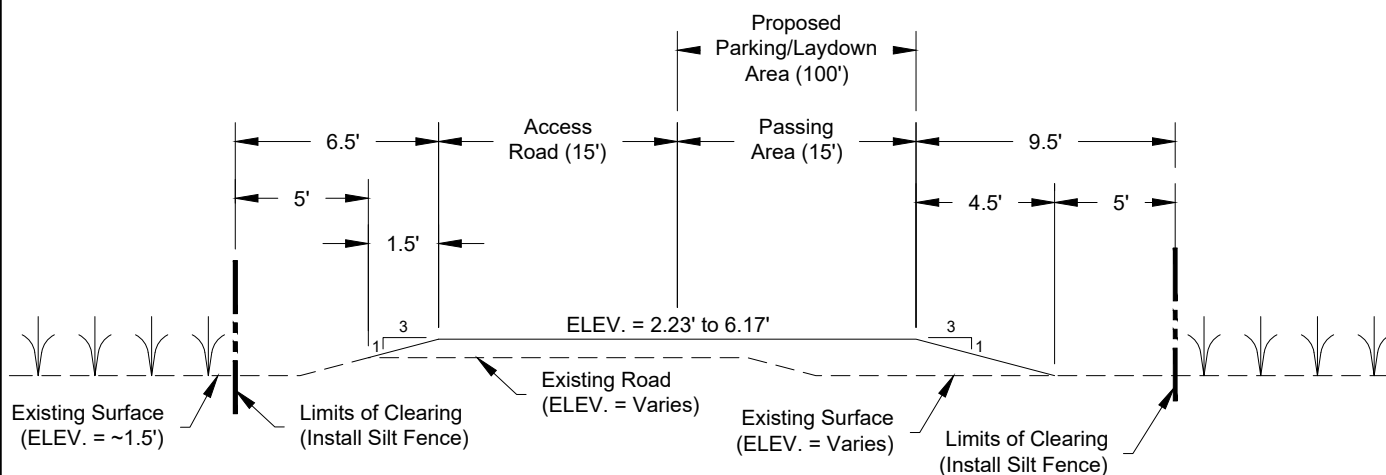
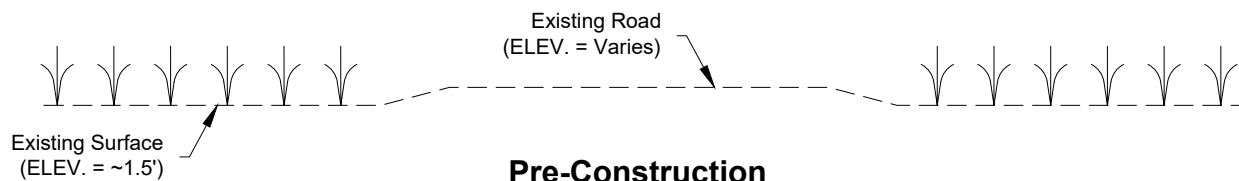
ConocoPhillips Company
Project Gumbo South



Drawn By	LMM	12/04/23
Checked By	LMH	12/04/23
Approved By	TCK	12/04/23

Project Number
1429-004
Drawing Number
1429-004-A108

6
Figure



Notes

1. Elevations (ELEV.) are referenced to North American Vertical Datum 1988 (NAVD88).
2. Water levels vary from no visible standing water to shallow inundation based on recent precipitation. No detailed water level history available.

North/South Access Road with Passing Area and Parking/ Laydown Area Typical Sections

Joint Permit Application
Johnson Bayou, Cameron Parish, Louisiana

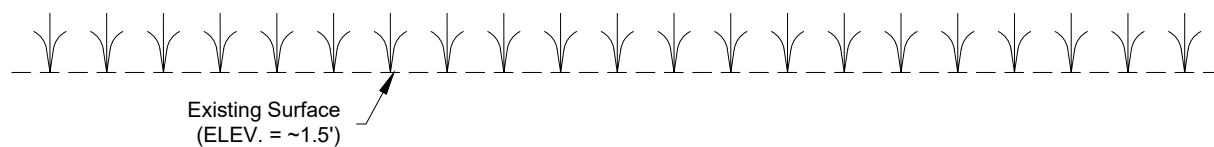
ConocoPhillips Company
Project Gumbo South



Drawn By	LMM	12/04/23
Checked By	LMH	12/04/23
Approved By	TCK	12/04/23

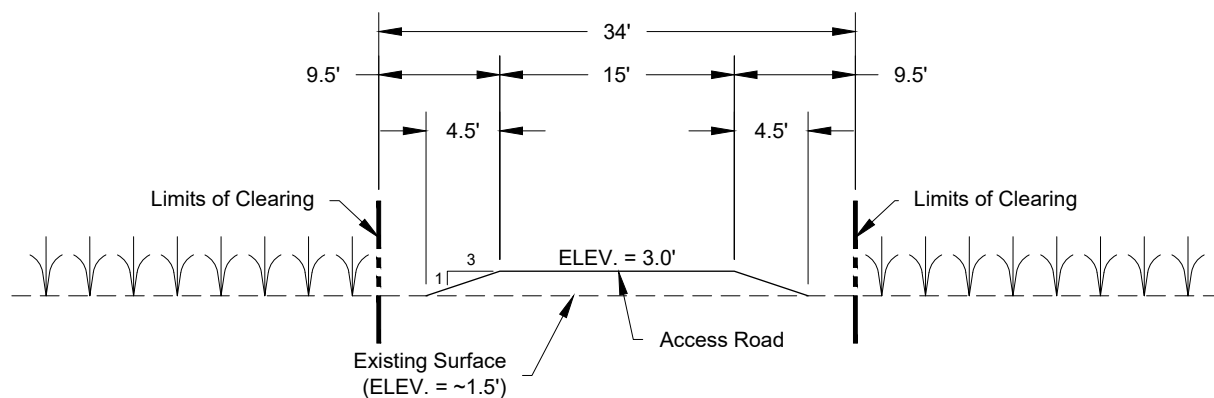
Project Number
1429-004
Drawing Number
1429-004-A117

7
Figure



Pre-Construction

Not to Scale



Post-Construction

Not to Scale

Notes

1. Elevations (ELEV.) are referenced to North American Vertical Datum 1988 (NAVD88).
2. Water levels vary from no visible standing water to shallow inundation based on recent precipitation. No detailed water level history available.

East/West Access Road Typical Sections

Joint Permit Application
Johnson Bayou, Cameron Parish, Louisiana

ConocoPhillips Company

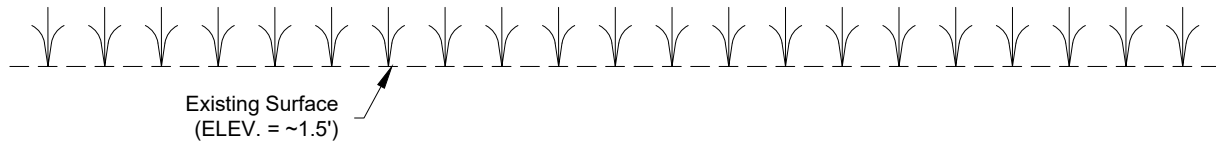
Project Gumbo South



Drawn By	LMM	12/04/23
Checked By	LMH	12/04/23
Approved By	TCK	12/04/23

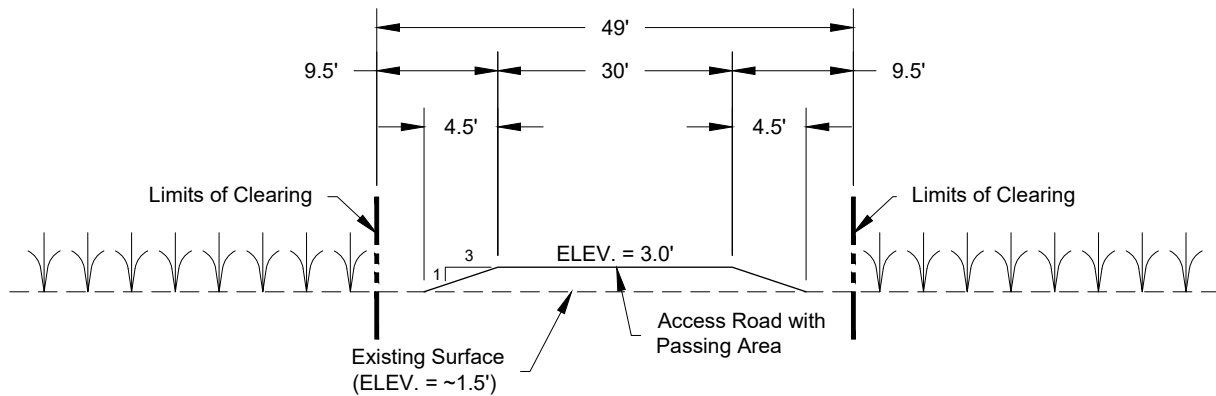
Project Number
1429-004
Drawing Number
1429-004-A116

8
Figure



Pre-Construction

Not to Scale



Post-Construction

Not to Scale

Notes

1. Elevations (ELEV.) are referenced to North American Vertical Datum 1988 (NAVD88).
2. Water levels vary from no visible standing water to shallow inundation based on recent precipitation. No detailed water level history available.

East/West Access Road with Passing Area Typical Sections

Joint Permit Application
Johnson Bayou, Cameron Parish, Louisiana

ConocoPhillips Company

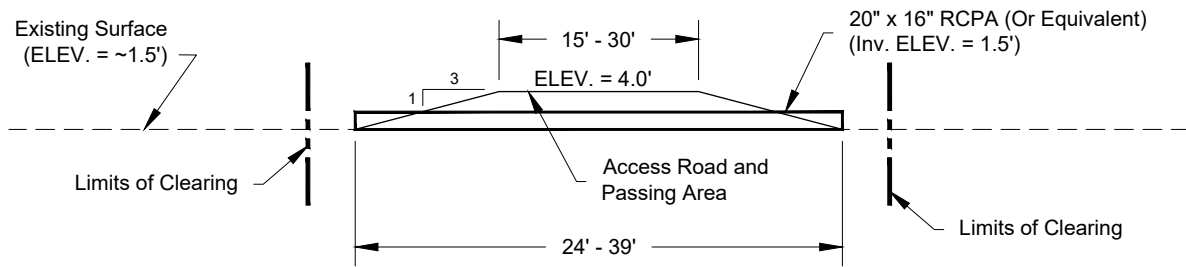
Project Gumbo South



Drawn By	LMM	12/04/23
Checked By	LMH	12/04/23
Approved By	TCK	12/04/23

Project Number
1429-004
Drawing Number
1429-004-A107

9
Figure



Culvert Typical Section

Not to Scale

Notes

1. Elevations (ELEV.) are referenced to North American Vertical Datum 1988 (NAVD88).
2. Water levels vary from no visible standing water to shallow inundation based on recent precipitation. No detailed water level history available.
3. Elevations of the East/West roadway will increase at locations where culverts are installed under this roadway to allow for sufficient cover over the culverts.

Culvert Typical Section

Joint Permit Application
Johnson Bayou, Cameron Parish, Louisiana

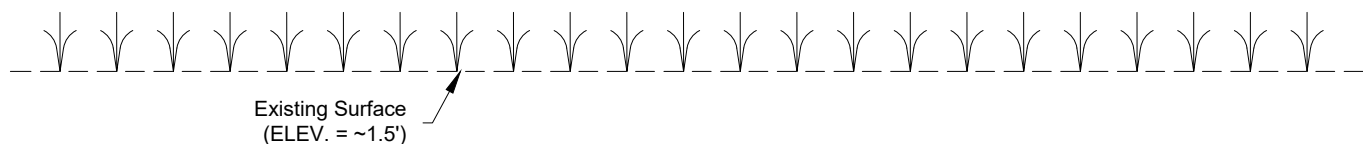
ConocoPhillips Company
Project Gumbo South



Drawn By	LMM	12/04/23
Checked By	LMH	12/04/23
Approved By	TCK	12/04/23

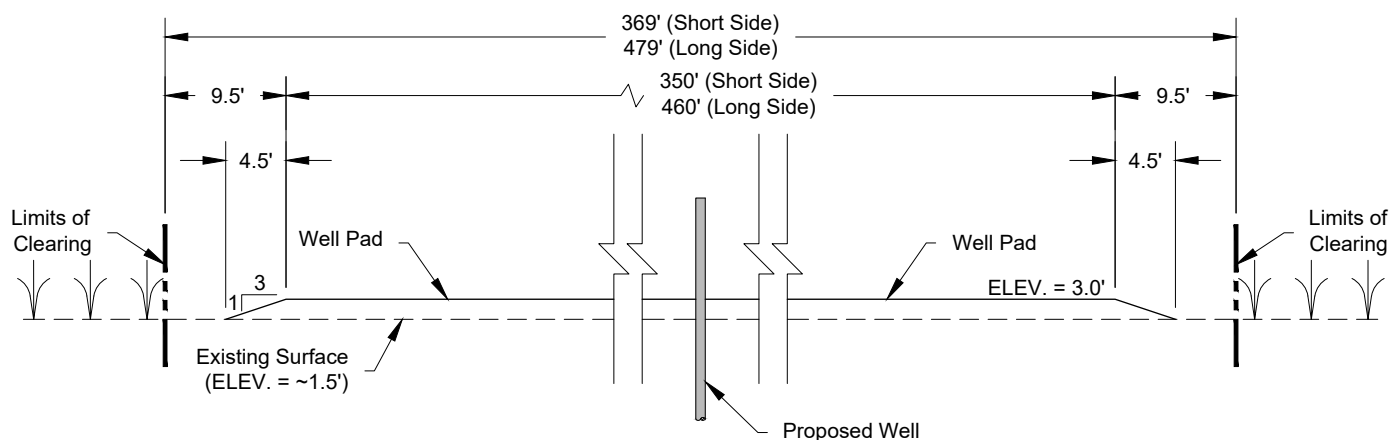
Project Number
1429-004
Drawing Number
1429-004-A114

10
Figure



Pre-Construction

Not to Scale



Post-Construction

Not to Scale

Notes

1. Elevations (ELEV.) are referenced to North American Vertical Datum 1988 (NAVD88).
2. Water levels vary from no visible standing water to shallow inundation based on recent precipitation. No detailed water level history available.

Well Pad Typical Sections

Joint Permit Application
Johnson Bayou, Cameron Parish, Louisiana

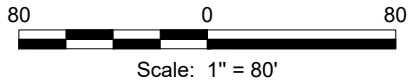
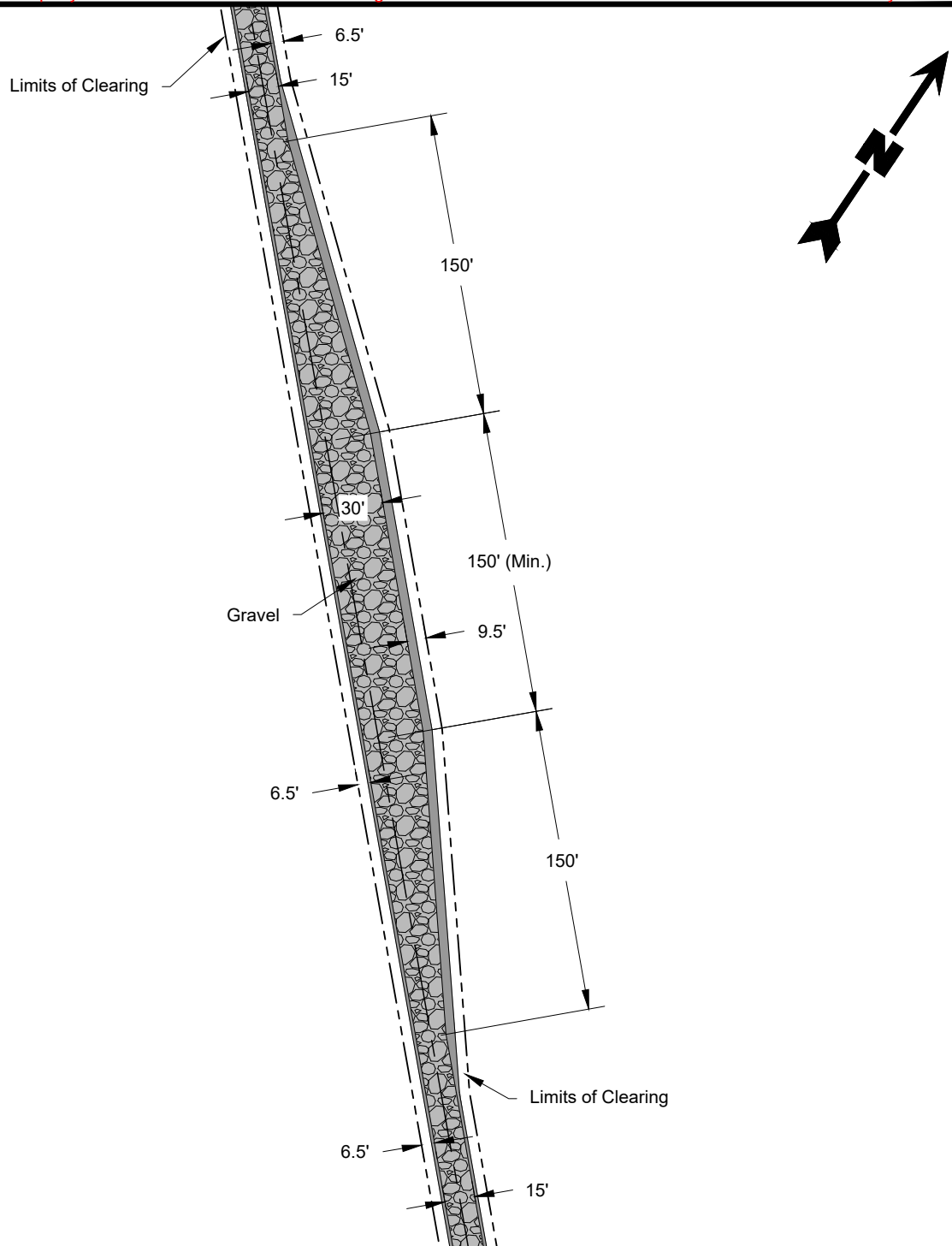
ConocoPhillips Company
Project Gumbo South



Drawn By	LMM	12/04/23
Checked By	LMH	12/04/23
Approved By	TCK	12/04/23

Project Number
1429-004
Drawing Number
1429-004-A106

11
Figure



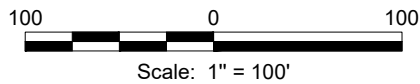
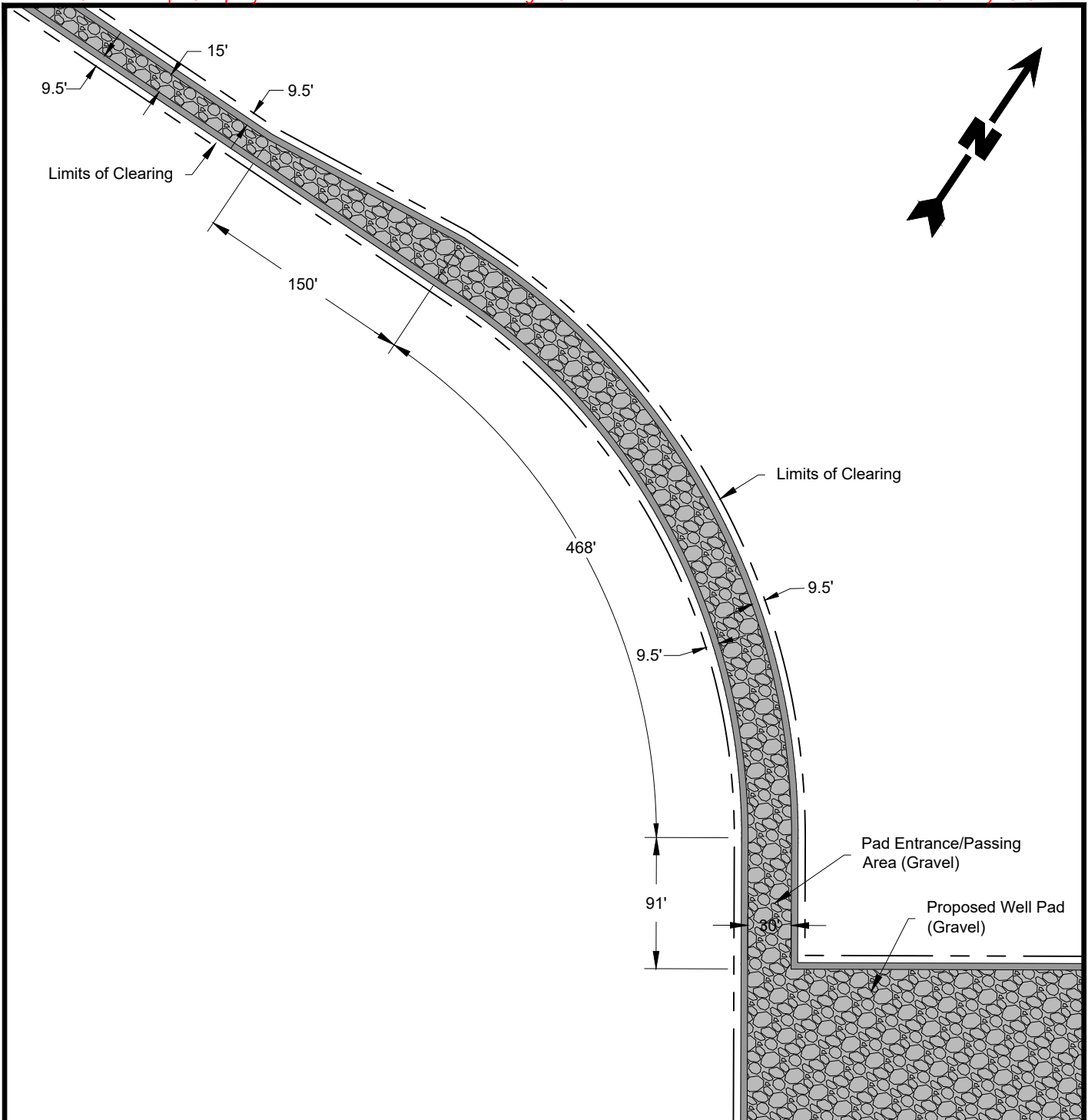
North/South Access Road and Passing Area Typical Plan View

Joint Permit Application
Johnson Bayou, Cameron Parish, Louisiana

ConocoPhillips Company
Project Gumbo South



Drawn By	LMM	12/04/23
Checked By	LMH	12/04/23
Approved By	TCK	12/04/23
Project Number 1429-004		12 Figure
Drawing Number 1429-004-A111		



East/West Access Road, Entrance Area and Passing Area at Well Pad Plan View

Joint Permit Application
Johnson Bayou, Cameron Parish, Louisiana

ConocoPhillips Company
Project Gumbo South

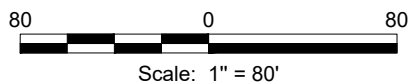
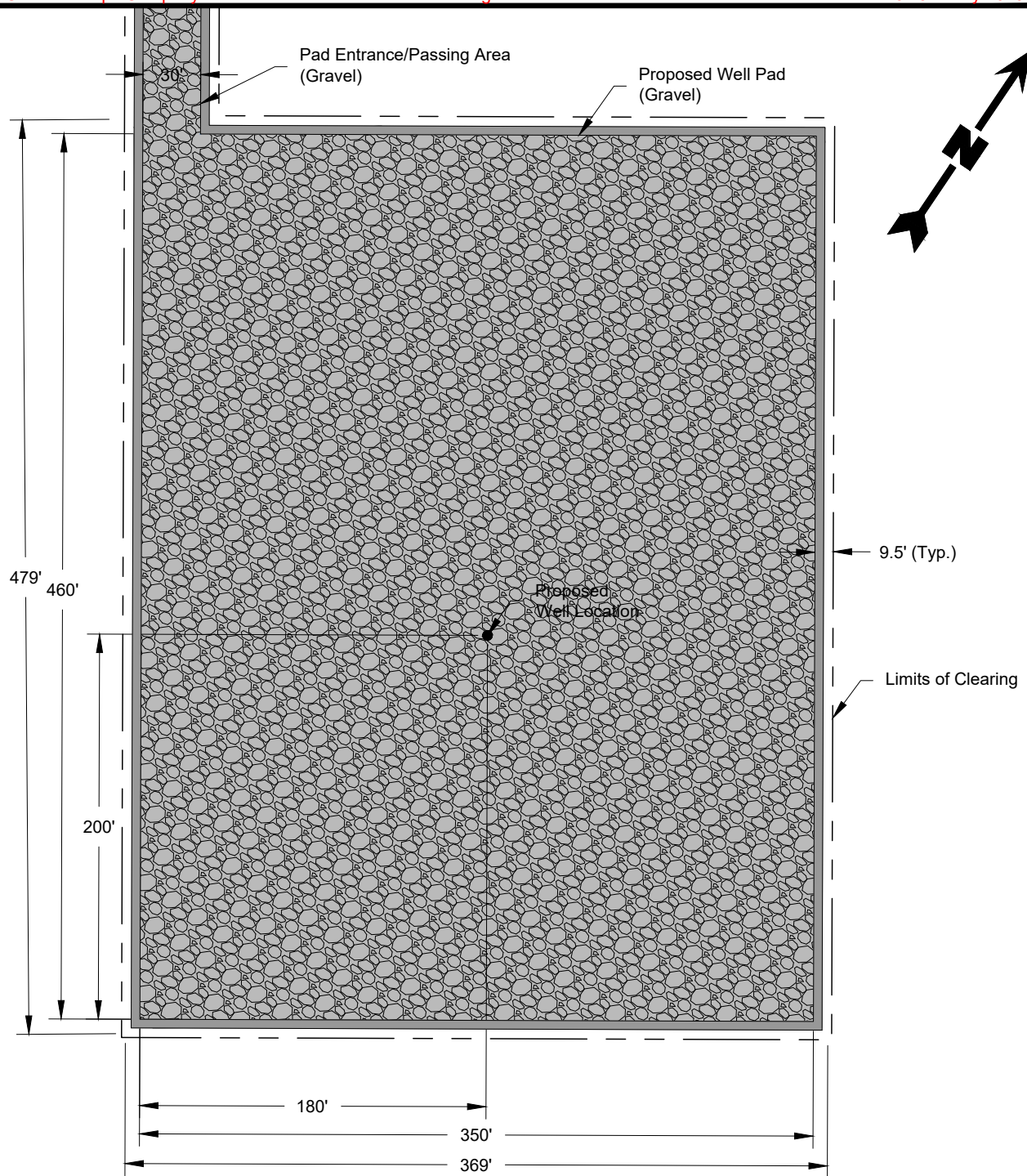


Drawn By	LMM	12/04/23
Checked By	LMH	12/04/23
Approved By	TCK	12/04/23

Project Number
1429-004

Drawing Number
1429-004-A110

13
Figure



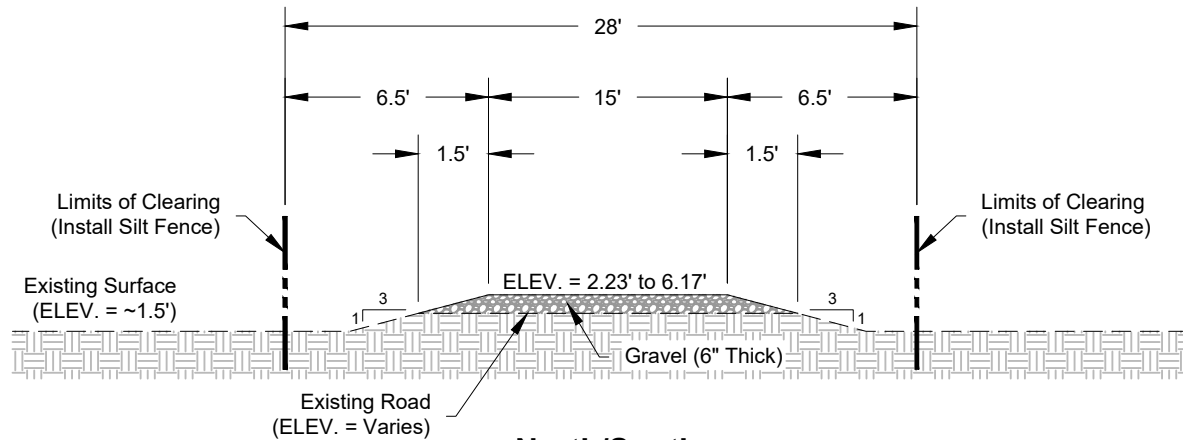
Proposed Well Pad Plan View

Joint Permit Application
Johnson Bayou, Cameron Parish, Louisiana

ConocoPhillips Company
Project Gumbo South

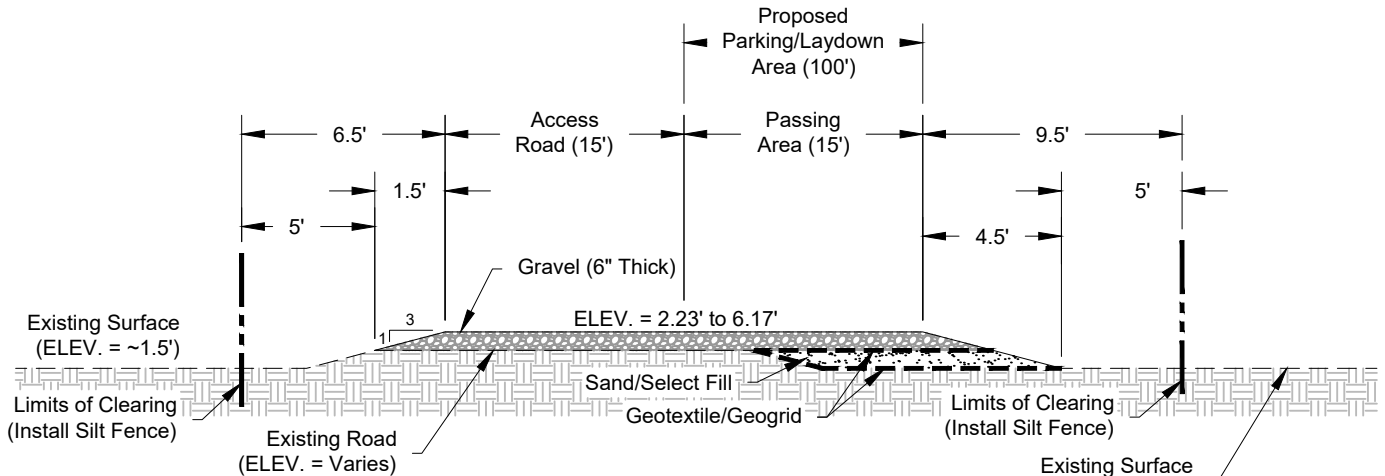


Drawn By	LMM	12/04/23
Checked By	LMH	12/04/23
Approved By	TCK	12/04/23
Project Number 1429-004		14 Figure
Drawing Number 1429-004-A109		



North/South Access Road Detail

Not to Scale



North/South Access Road Passing Area and Parking/Laydown Area Detail

Not to Scale

North/South Access Road, Passing Area, and Parking/Laydown Area Details

Joint Permit Application
Johnson Bayou, Cameron Parish, Louisiana

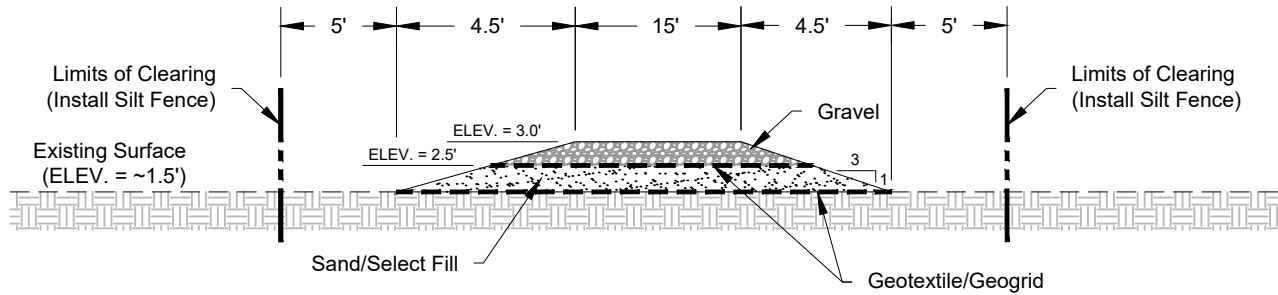
ConocoPhillips Company
Project Gumbo South



Drawn By	LMM	12/04/23
Checked By	LMH	12/04/23
Approved By	TCK	12/04/23

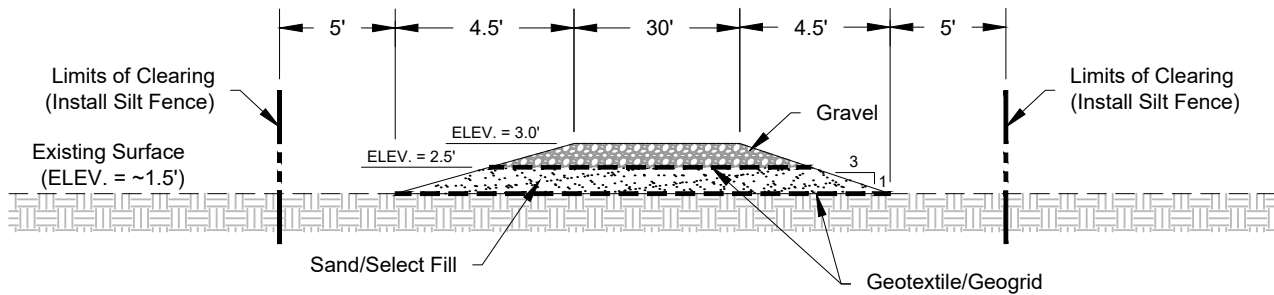
Project Number
1429-004
Drawing Number
1429-004-A112

15
Figure



East/West Access Road Detail

Not to Scale



East/West Access Road and Passing Area Detail

Not to Scale

East/West Access Road and Passing Area Details

Joint Permit Application
Johnson Bayou, Cameron Parish, Louisiana

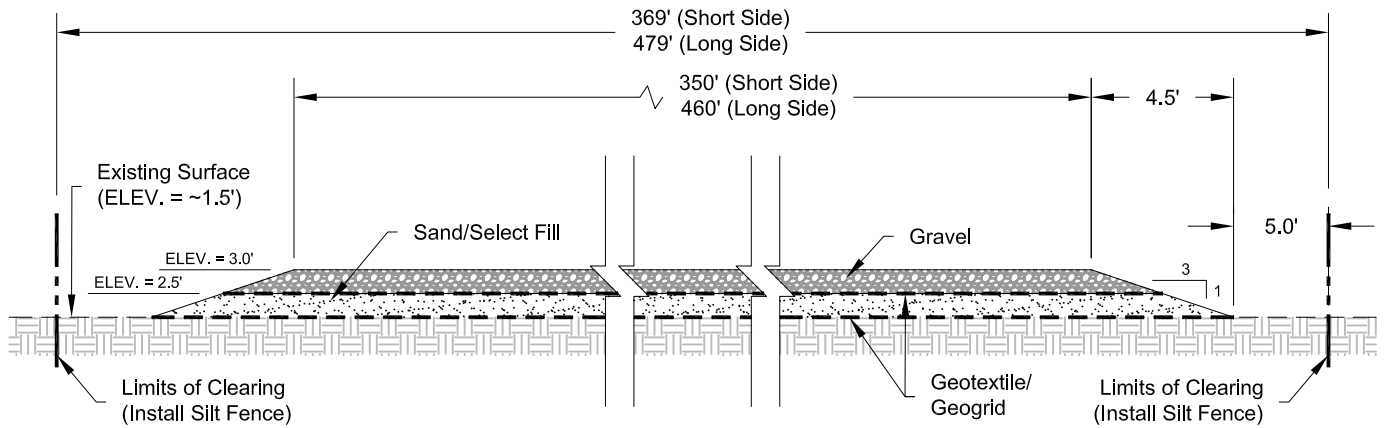
ConocoPhillips Company
Project Gumbo South



Drawn By	LMM	12/04/23
Checked By	LMH	12/04/23
Approved By	TCK	12/04/23

Project Number
1429-004
Drawing Number
1429-004-A115

16
Figure



Well Pad Detail

Not to Scale

Well Pad Detail

Joint Permit Application
Johnson Bayou, Cameron Parish, Louisiana

ConocoPhillips Company

Project Gumbo South



Drawn By	LMM	12/04/23
Checked By	LMH	12/04/23
Approved By	TCK	12/04/23
Project Number 1429-004		17 Figure
Drawing Number 1429-004-A113		