

DRIVING DIRECTIONS

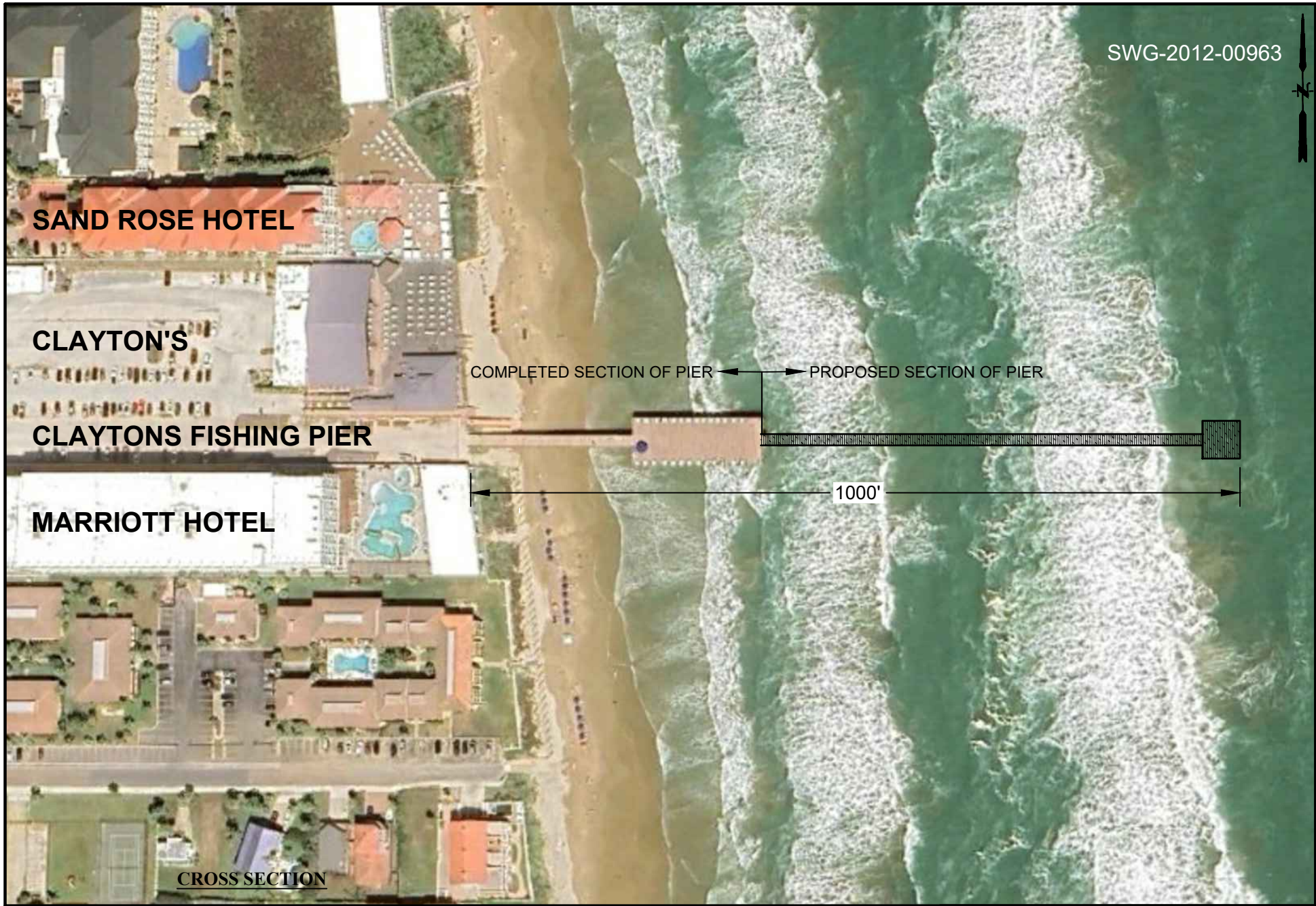
- A. STARTING IN HARLINGEN TX.
- B. GO SOUTH ON HIGHWAY 69
- C. TURN EAST ONTO HIGHWAY 100
- D. TO SOUTH PADRE ISLAND
- E. TURN NORTH ON PADRE BLVD
- F. PROCEED TO 6800 PADRE BLVD

LOCATION MAP TO PIER

SOUTH PADRE ISLAND

FISHING PIER

6800 PADRE BLVD.
SOUTH PADRE ISLAND, TX



SAND ROSE HOTEL

CLAYTON'S

CLAYTONS FISHING PIER

MARRIOTT HOTEL

CROSS SECTION

COMPLETED SECTION OF PIER

PROPOSED SECTION OF PIER

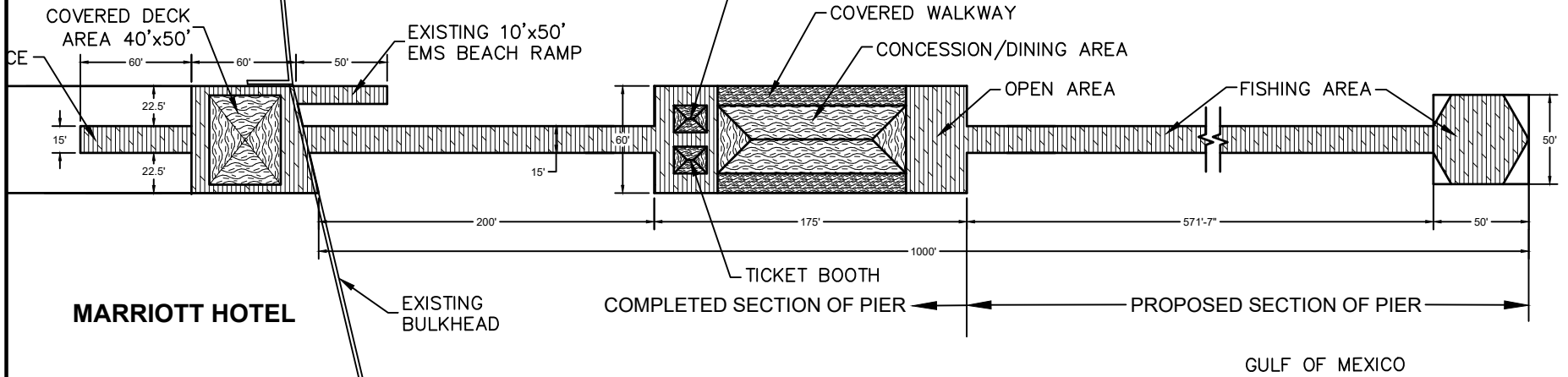
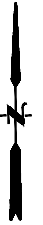
1000'

AERIAL VIEW OF PIER
USCORPS SWG-2012-00963

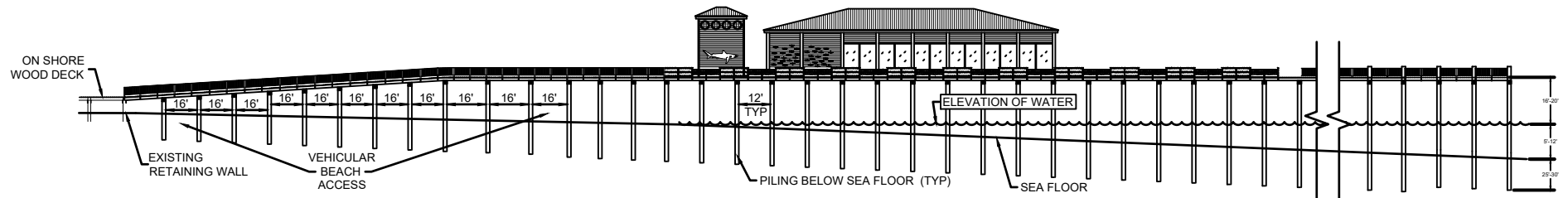
SOUTH PADRE ISLAND
FISHING PIER
6800 PADRE BLVD.
SOUTH PADRE ISLAND, TX

**CLAYTON'S
BAR & GRILL**

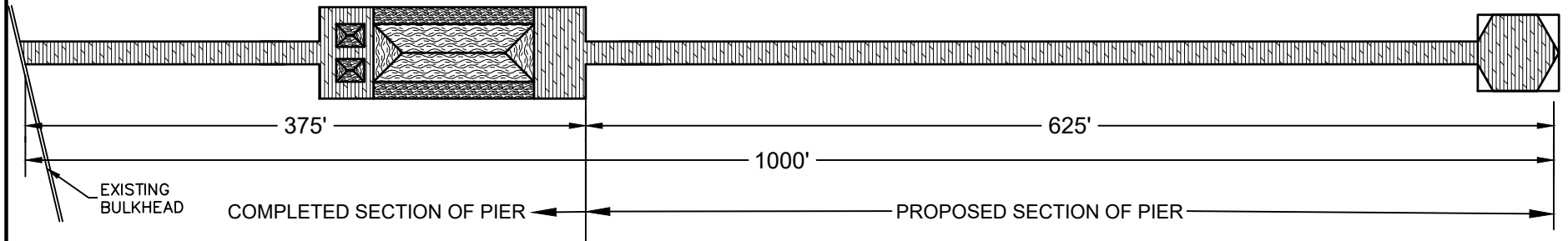
SWG-2012-00963



PLAN



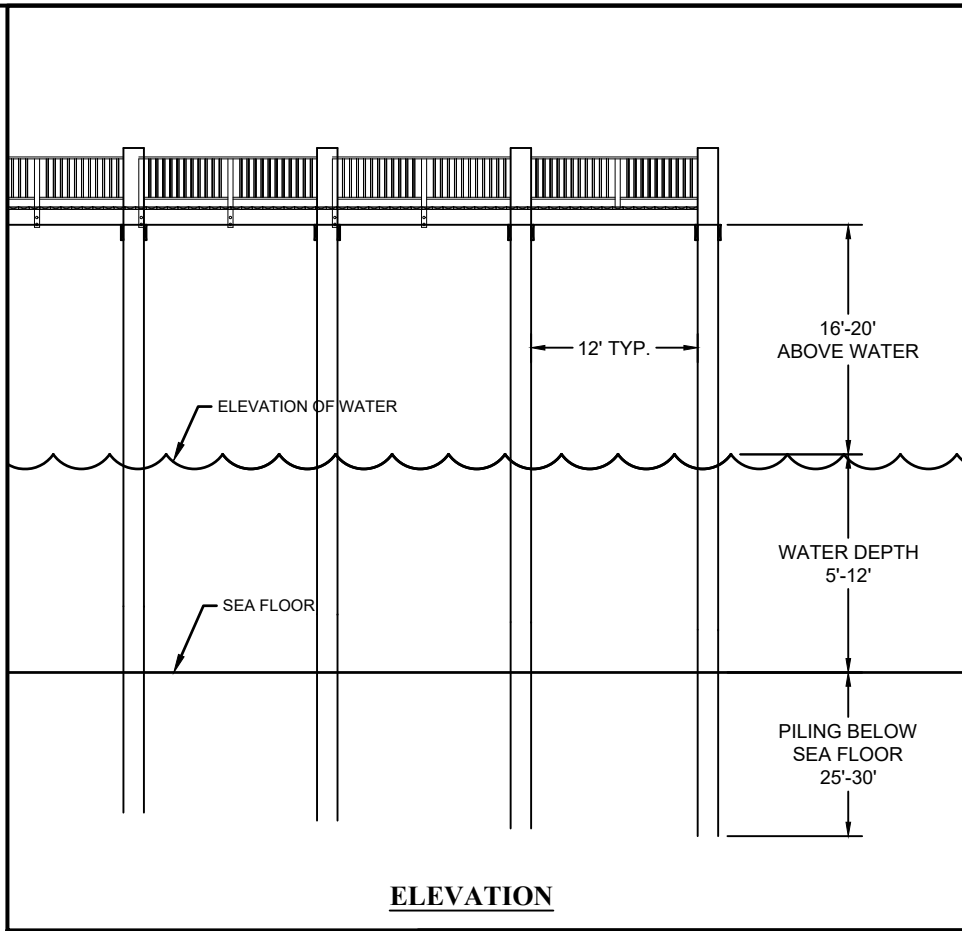
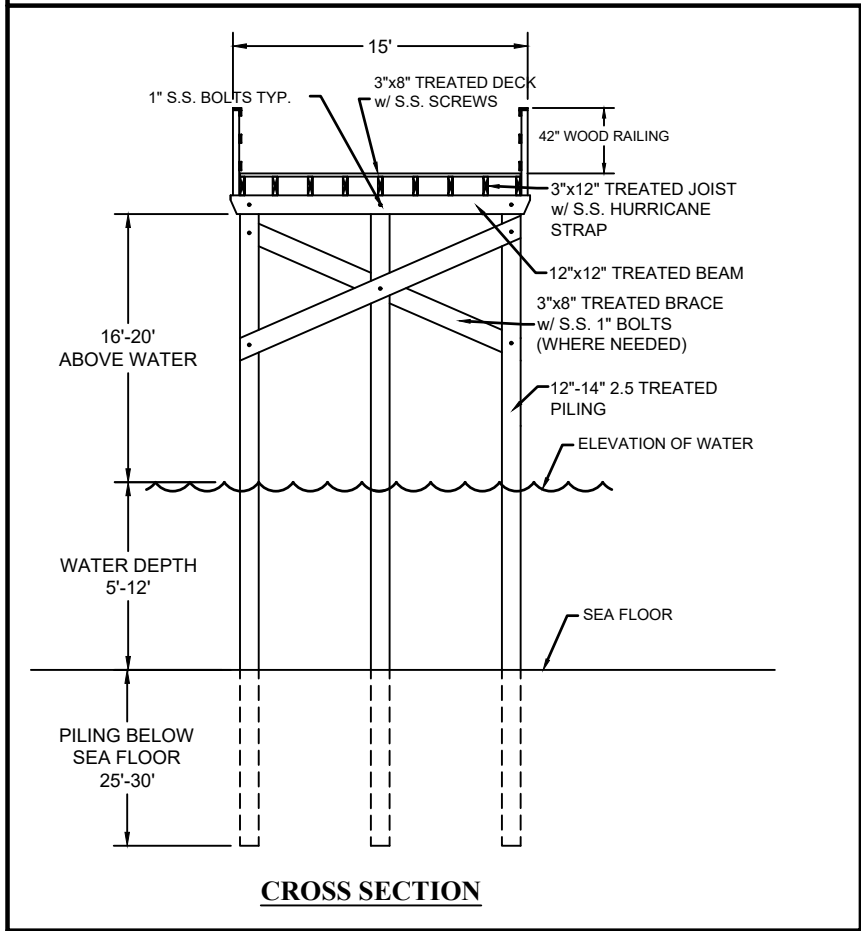
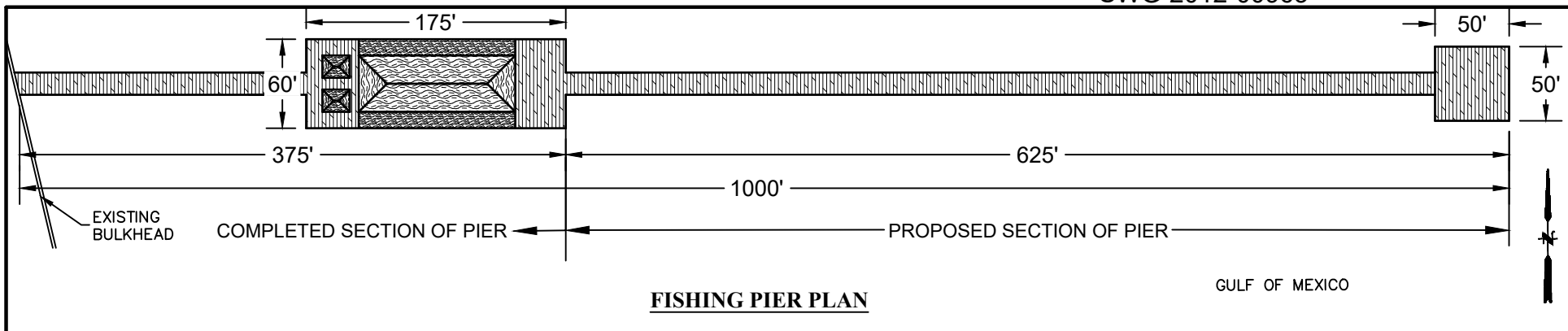
ELEVATION



EXISTING PIER PERMIT
USCORPS SWG-2012-00963

Sheet 3 of 4

SOUTH PADRE ISLAND
FISHING PIER
6800 PADRE BLVD.
SOUTH PADRE ISLAND, TX



NOTES

- A. WOOD PILING DIA.: 12"-14"
- B. LENGTH OF PILING: 60'
- C. DEPTH OF PILING BELOW GRADE: 25'-30'
- D. NUMBER OF WOOD PILINGS TO BE INSTALLED: 187
- E. PILES DRIVEN BY WATER JET, VIBRATION AND DROP HAMMER

PROPOSED PIER EXTENSION
USCORPS SWG-2012-00963

SOUTH PADRE ISLAND
FISHING PIER
 6800 PADRE BLVD.
 SOUTH PADRE ISLAND, TX