

LOCATION MAP

★ Jamaica Beach Project Location

Project Location is
29.180647 N, -94.973708 W
Galveston Quadrangle
NAD 83 State Plane Texas South Central



ELEMENTS SHOWN ON THIS PLAN SET ARE SCHEMATIC FOR PERMITTING PURPOSES ONLY.
NOT FOR CONSTRUCTION.

0 8,500 17,000
 Feet

Datum: NAD 1983
 Projection: State Plane
 Texas South Central
 Units: Feet
 Basemap: ESRI
 Nat Geo World Map

ATKINS

City of Jamaica Beach
Seaweed Maintenance Permit

Jamaica Beach, Galveston County, Texas
 Sheet 1 of 5

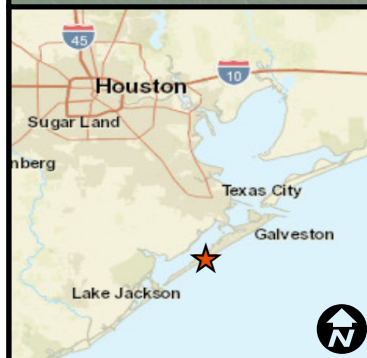
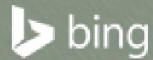
Job No.: 100057667

Scale: 1" = 17,000 feet

Prepared By: Atkins/WHIT6392

Date: Nov 10, 2017

N:\Clients\J\Jamaica_Beach_City_of100057667\geofigs\Vicinity_landscape.mxd



PROJECT LOCATION MAP

— Jamaica Beach Project Area (3,326.5 LF)



ELEMENTS SHOWN ON THIS PLAN SET ARE SCHEMATIC FOR PERMITTING PURPOSES ONLY.
NOT FOR CONSTRUCTION.
AERIAL IMAGERY SHOWN HEREON IS A GRAPHICAL REPRESENTATION
AND MAY NOT REFLECT CONTEMPORARY CONDITIONS.

0 200 400
Feet



Datum: NAD 1983
Projection: State Plane
Texas South Central
Units: Feet
Basemap: ESRI
Imagery: BING Imagery

ATKINS

City of Jamaica Beach Seaweed Maintenance Permit

Jamaica Beach, Galveston County, Texas
Sheet 2 of 5

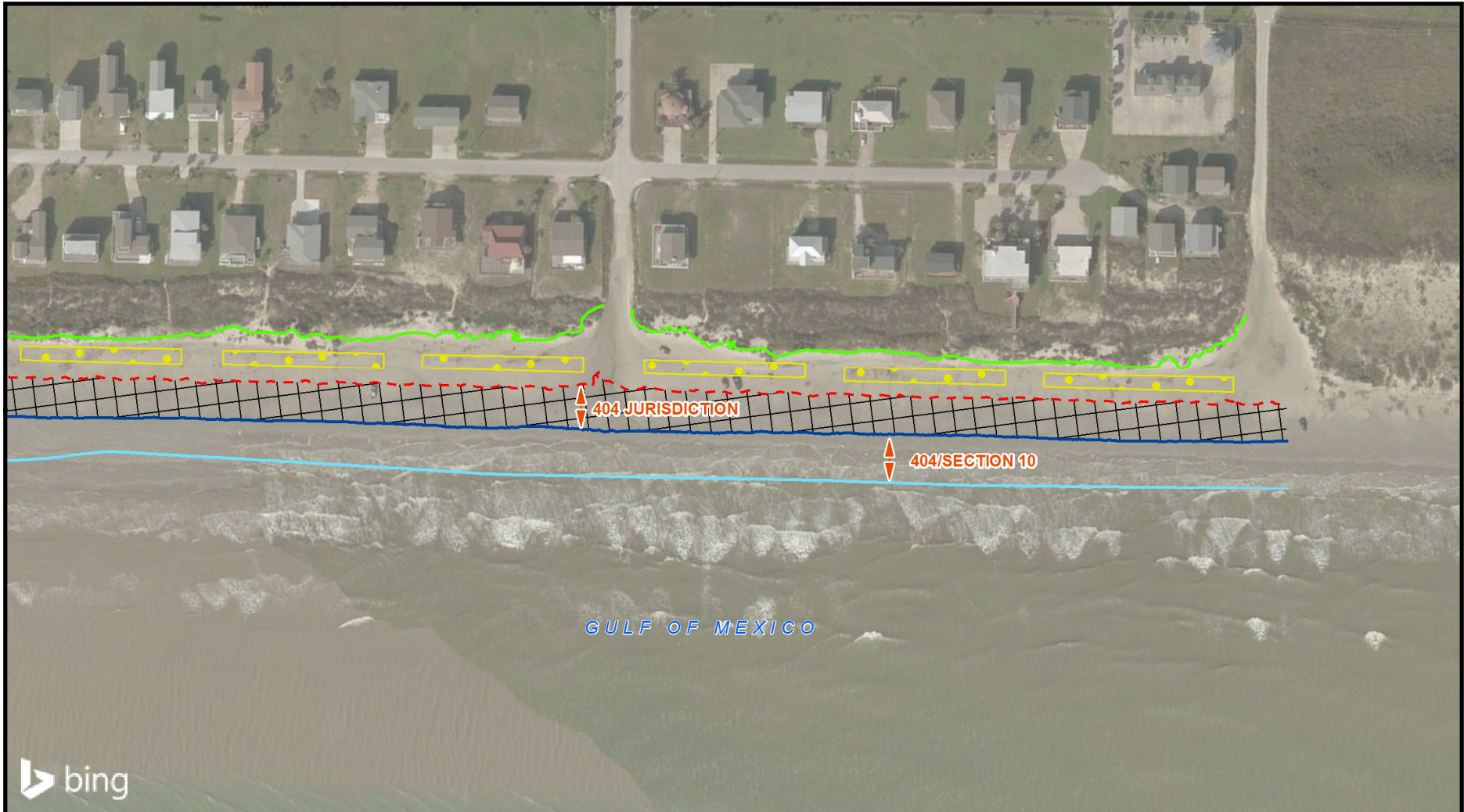
Job No.: 100057667

Scale: 1" = 400 feet

Prepared By: Atkins/WHIT6392

Date: Nov 10, 2017

N:\Clients\J_Jamaica_Beach_City_of\100057667\geofigs\Project_Location_landscape.mxd



SITE PLAN AERIAL MAP

- Approximate Line of Vegetation
- Mean Low Water
- Mean High Water
- - - Typical Jurisdictional Limit (3' Contour)
- ● Predetermined Temporary Seaweed Placement Area
- X X Proposed Project Area (4.08 Acres)

ELEMENTS SHOWN ON THIS PLAN SET ARE SCHEMATIC FOR PERMITTING PURPOSES ONLY.
NOT FOR CONSTRUCTION.
AERIAL IMAGERY, SHOWN HEREON, IS A GRAPHICAL REPRESENTATION
AND MAY NOT REFLECT CONTEMPORARY CONDITIONS.
LINE OF VEGETATION AND TEMPORARY PLACEMENT AREAS, SHOWN HEREON,
ARE CONCEPTUAL; CONTEMPORARY CONDITIONS PREVAIL IN FIELD PLACEMENT OF SEAWEED.
THE NORTH TOE OF DUNE, AS SHOWN HEREON, IS APPROXIMATE.

0 100 200
Feet

Datum: NAD 1983
Projection: State Plane
Texas South Central
Units: Feet
Basemap: ESRI
Imagery: BING Imagery



ATKINS

City of Jamaica Beach Seaweed Maintenance Permit

Jamaica Beach, Galveston County, Texas
Sheet 3 of 5

Job No.: 100057667

Scale: 1" = 200 feet

Prepared By: Atkins/WHIT6392

Date: Nov 10, 2017

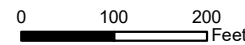
N:\Clients\J_Jamaica_Beach_City_of\100057667\geofigs\Aerial_Plan_landscape_closeup.mxd



SITE PLAN AERIAL MAP

- Approximate Line of Vegetation
- Mean Low Water
- Mean High Water
- - - Typical Jurisdictional Limit (3' Contour)
- ● Predetermined Temporary Seaweed Placement Area
- X X Proposed Project Area (4.08 Acres)

ELEMENTS SHOWN ON THIS PLAN SET ARE SCHEMATIC FOR PERMITTING PURPOSES ONLY.
NOT FOR CONSTRUCTION.
AERIAL IMAGERY, SHOWN HEREON, IS A GRAPHICAL REPRESENTATION
AND MAY NOT REFLECT CONTEMPORARY CONDITIONS.
LINE OF VEGETATION AND TEMPORARY PLACEMENT AREAS, SHOWN HEREON,
ARE CONCEPTUAL; CONTEMPORARY CONDITIONS PREVAIL IN FIELD PLACEMENT OF SEAWEED.
THE NORTH TOE OF DUNE, AS SHOWN HEREON, IS APPROXIMATE.



Datum: NAD 1983
Projection: State Plane
Texas South Central
Units: Feet
Basemap: ESRI
Imagery: BING Imagery



ATKINS

City of Jamaica Beach Seaweed Maintenance Permit

Jamaica Beach, Galveston County, Texas
Sheet 4 of 5

Job No.: 100057667

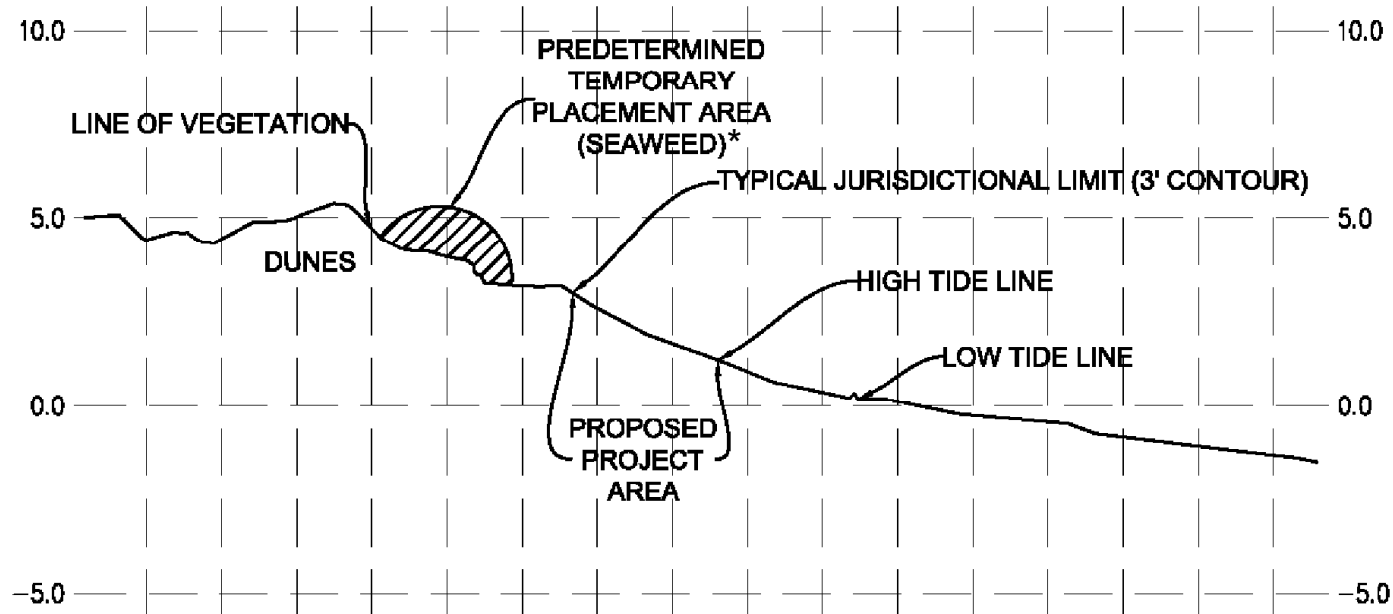
Scale: 1" = 200 feet

Prepared By: Atkins/WHIT6392

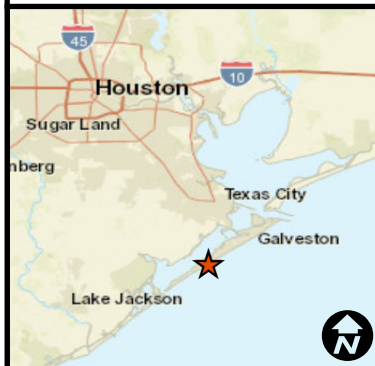
Date: Nov 10, 2017

N:\Clients\J_Jamaica_Beach_City_of100057667\geofigs\Aerial_Plan_landscape_closeup.mxd

JAMAICA BEACH PROFILE (TYPICAL)



* Seaweed (floating plant material including Sargassum)



JAMAICA BEACH PROFILE (TYPICAL)

ATKINS

**City of Jamaica Beach
Seaweed Maintenance Permit**

Jamaica Beach, Galveston County, Texas
Sheet 5 of 5

Job No.: 100057667

Scale: N/A

Prepared By: Atkins/WHIT6392

Date: Nov 10, 2017

ELEMENTS SHOWN ON THIS PLAN SET ARE SCHEMATIC FOR PERMITTING PURPOSES ONLY.
NOT FOR CONSTRUCTION.

N:\Clients\J_Jamaica_Beach_City_of\100057667\geofigs\Typical_Section_Landscape.mxd