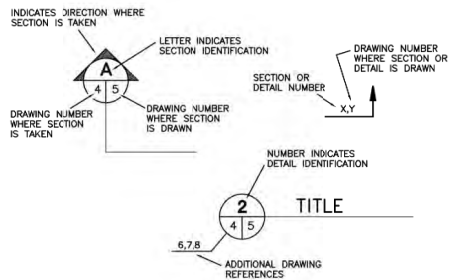


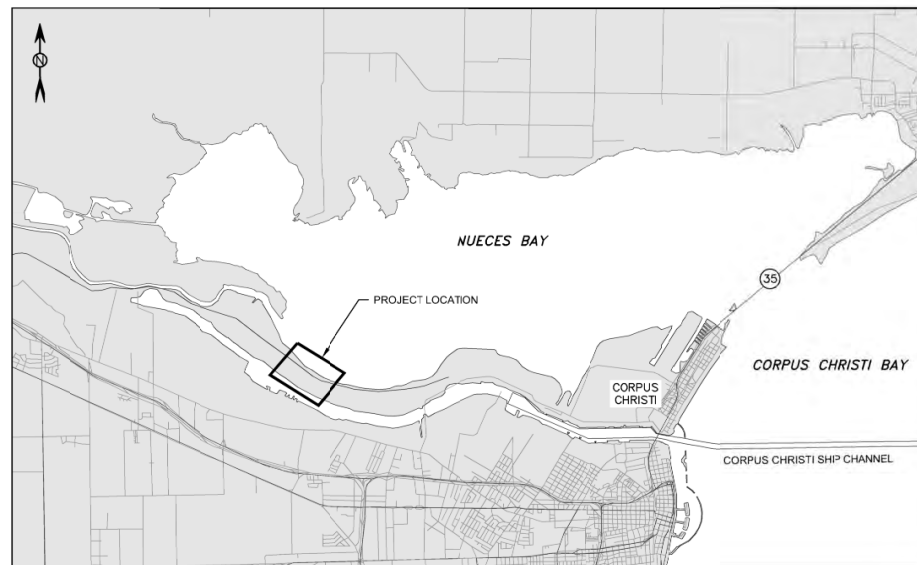


TULE LAKE TERMINAL

PORT OF CORPUS CHRISTI AUTHORITY
CORPUS CHRISTI, TEXAS
BY AUTHORITY OF THE PORT COMMISSIONERS
SEAN STRAWBRIDGE, CHIEF EXECUTIVE OFFICER



TYPICAL SECTION AND DETAIL SYMBOLS



LOCATION MAP

0 5,000 10,000

SCALE IN FEET

DRAWING INDEX

SHEET NO.	TITLE
1	COVER SHEET
2	SITE LOCATION MAP
3	AERIAL MAP
4	WETLAND DELINEATION EXISTING CONDITIONS MAP
5	WETLAND DELINEATION EXISTING CONDITIONS MAP
6	OVERALL CONCEPTUAL SITE PLAN
7	SITE PLAN AND WETLAND DELINEATION -1
8	SITE PLAN AND WETLAND DELINEATION -2
9	DREDGING SITE PLAN
10	MATRESS DETAIL
11	SECTION - SHIP DOCK 1
12	SECTION - SHIP DOCK 2
13	SECTION - SHIP DOCK 3
14	SECTION - BARGE DOCK
15	TYPICAL SECTION - DOCK 1
16	TYPICAL SECTION - DOCK 2
17	TYPICAL SECTION - DOCK 3
18	TYPICAL SECTION - BARGE DOCK
19	TYP SECTION - DOLPHIN
20	DMPA LOCATIONS

FOR REVIEW

NO.	DATE	REVISION
1	12/2/21	DRAFT FOR REVIEW

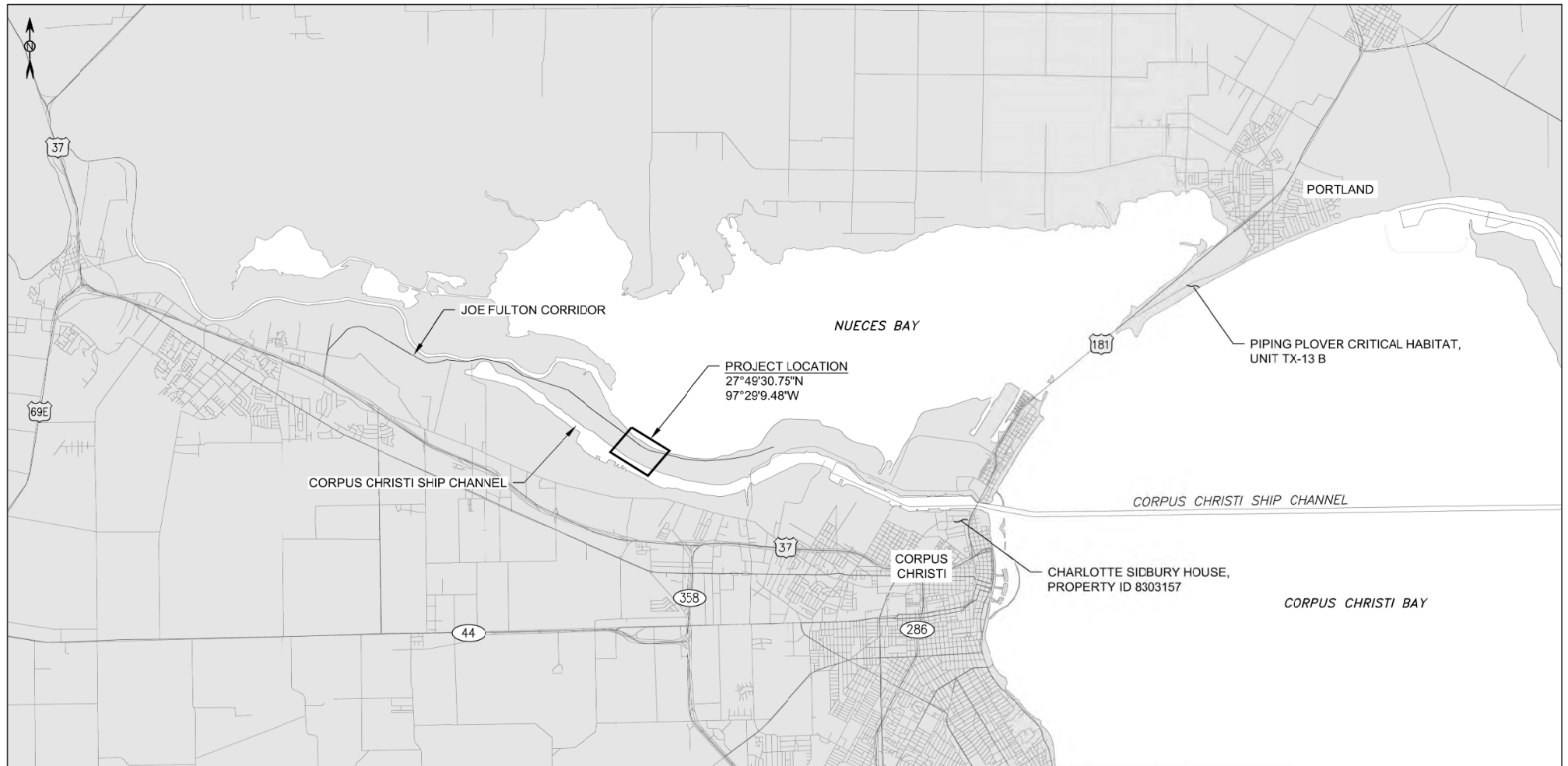


M 711 North Carancahua, Suite 1610
Corpus Christi, Texas 78401
TEL: 361-661-3061
MOTT MACDONALD Texas Registered Engineering Firm: F-7429

PORT OF CORPUS CHRISTI AUTHORITY

TULE LAKE TERMINAL
CORPUS CHRISTI, NUECES COUNTY, TX

SCALE: VARIES	DATE: DECEMBER 2021
DWN. BY: SM	COVER SHEET
	SHEET 1 OF 20



0 4,000 8,000
SCALE IN FEET

FOR REVIEW

M 711 North Carancahua, Suite 1610
Corpus Christi, Texas 78401
TEL: 361-661-3061
MOTT MACDONALD Texas Registered Engineering Firm: F-7429

NO.	DATE	REVISION
1	12/2/21	DRAFT FOR REVIEW



PORT OF CORPUS CHRISTI AUTHORITY		
TULE LAKE TERMINAL CORPUS CHRISTI, NUECES COUNTY, TX		
SCALE: VARIES	SITE LOCATION MAP	DATE: DECEMBER 2021
DWN. BY: SM		SHEET 2 OF 20



0 500 1000
SCALE IN FEET

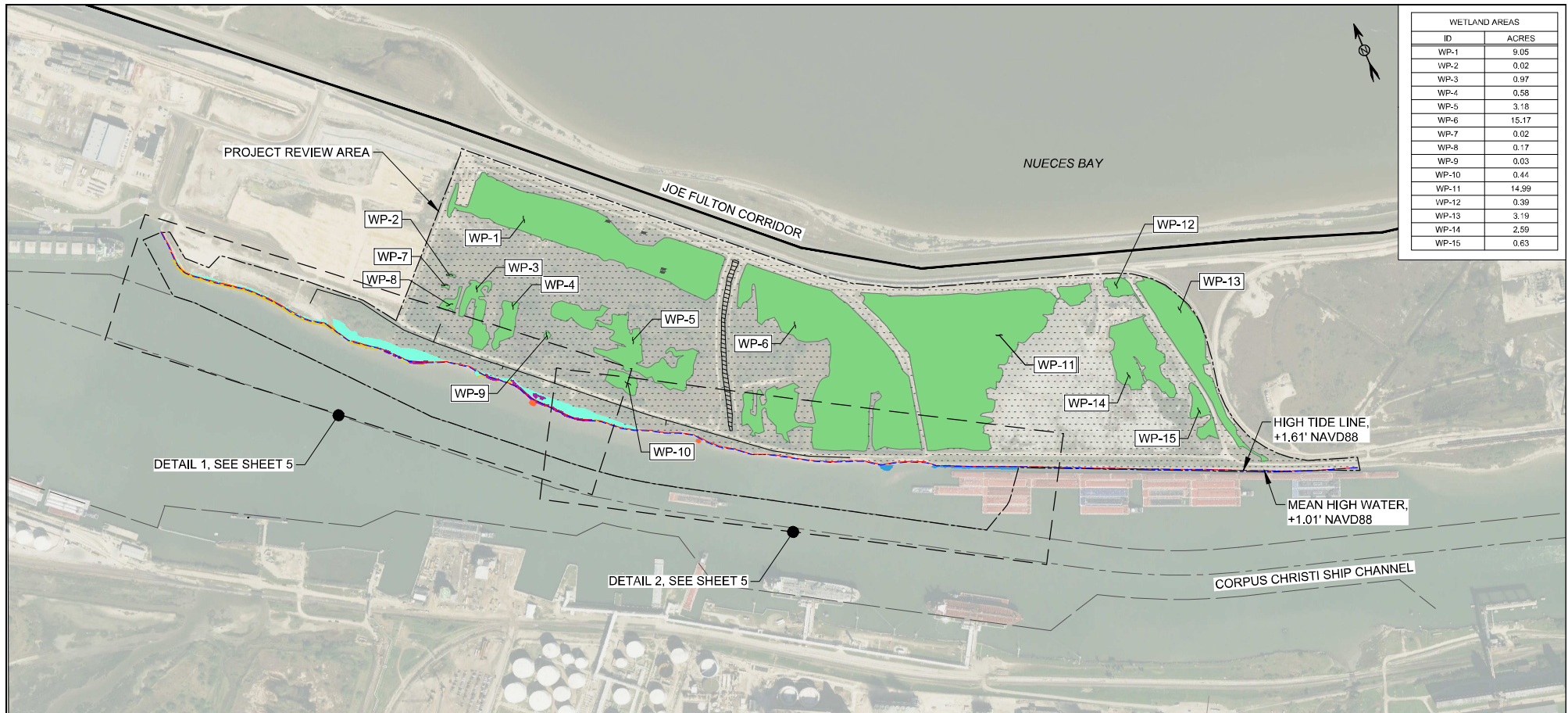
FOR REVIEW

M 711 North Carancahua, Suite 1610
Corpus Christi, Texas 78401
MOTT MACDONALD TEL: 361-661-3061
Texas Registered Engineering Firm: F-7429

NO.	DATE	REVISION
1	12/2/21	DRAFT FOR REVIEW



PORT OF CORPUS CHRISTI AUTHORITY		
TULE LAKE TERMINAL CORPUS CHRISTI, NUECES COUNTY, TX		
SCALE: VARIES	AERIAL MAP	DATE: DECEMBER 2021
DWN. BY: SM		SHEET 3 OF 20



WETLAND AREAS	
ID	ACRES
WP-1	9.05
WP-2	0.02
WP-3	0.97
WP-4	0.58
WP-5	3.18
WP-6	15.17
WP-7	0.02
WP-8	0.17
WP-9	0.03
WP-10	0.44
WP-11	14.99
WP-12	0.39
WP-13	3.19
WP-14	2.59
WP-15	0.63

EXISTING CONDITIONS LEGEND	
	UPLANDS (91.15 ACRES)
	PALUSTRINE WETLANDS (51.54 ACRES) (NON-JURISDICTIONAL)
	ESTUARINE HIGH MARSH WETLANDS (1.71 ACRES)
	ESTUARINE LOW MARSH WETLANDS (0.20 ACRES)
	SAND FLATS (0.57 ACRES)
	OYSTER REEFS (0.15 ACRES)
	SEAGRASS (0.01 ACRES)
	DRAINAGE DITCH FROM UPLANDS (0.70 ACRES) (NON-JURISDICTIONAL)
	HIGH TIDE LINE (+1.61' NAVD88)
	MEAN HIGH WATER LINE (+1.01' NAVD88)



FOR REVIEW

NO.	DATE	REVISION
1	12/2/21	DRAFT FOR REVIEW

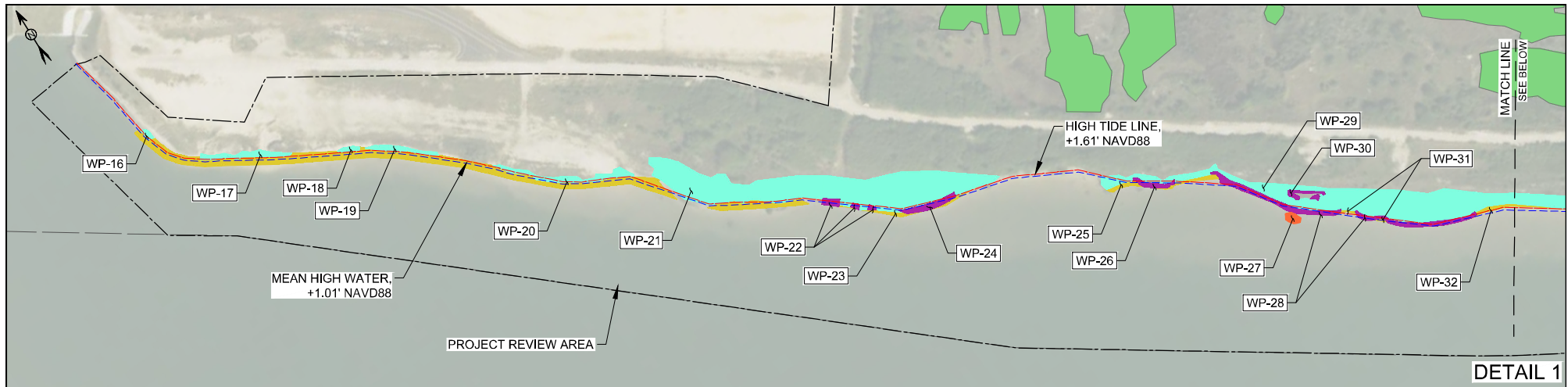


M 711 North Carancahua, Suite 1610
M Corpus Christi, Texas 78401
WCTT TEL: 361-661-3061
MACDONALD Texas Registered Engineering Firm: F-7429

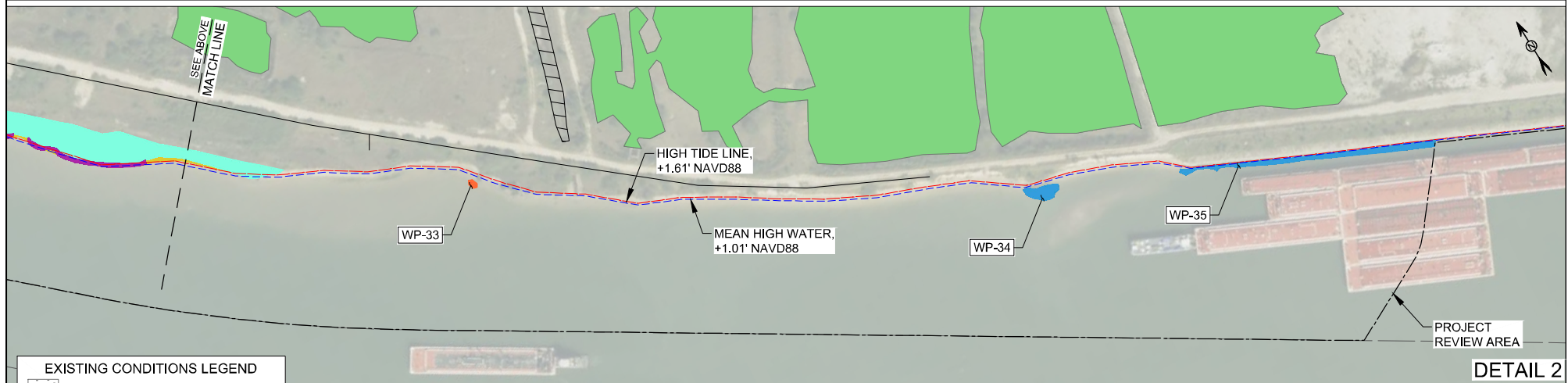
PORT OF CORPUS CHRISTI AUTHORITY

TULE LAKE TERMINAL
 CORPUS CHRISTI, NUECES COUNTY, TX

SCALE: VARIES	WETLAND DELINEATION EXISTING CONDITIONS MAP	DATE: DECEMBER 2021
DWN. BY: SM		SHEET 4 OF 20



DETAIL 1



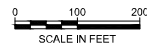
DETAIL 2

EXISTING CONDITIONS LEGEND

- UPLANDS (91.15 ACRES)
- PALUSTRINE WETLANDS (51.54 ACRES)
(NON-JURISDICTIONAL)
- ESTUARINE HIGH MARSH WETLANDS (1.71 ACRES)
- ESTUARINE LOW MARSH WETLANDS (0.20 ACRES)
- SAND FLATS (0.57 ACRES)
- OYSTER REEFS (0.15 ACRES)
- SEAGRASS (0.01 ACRES)
- DRAINAGE DITCH FROM UPLANDS (0.70 ACRES)
(NON-JURISDICTIONAL)
- HIGH TIDE LINE (+1.61' NAVD88)
- MEAN HIGH WATER LINE (+1.01' NAVD88)

WETLAND AREAS

ID	ACRES	ID	ACRES
WP-16	0.01	WP-26	0.01
WP-17	0.04	WP-27	0.01
WP-18	0.01	WP-28	0.09
WP-19	0.03	WP-29	0.74
WP-20	0.06	WP-30	0.01
WP-21	0.83	WP-31	0.01
WP-22	0.02	WP-32	0.02
WP-23	0.02	WP-33	0.01
WP-24	0.03	WP-34	0.03
WP-25	0.03	WP-35	0.11



FOR REVIEW

NO.	DATE	REVISION
1	12/2/21	DRAFT FOR REVIEW

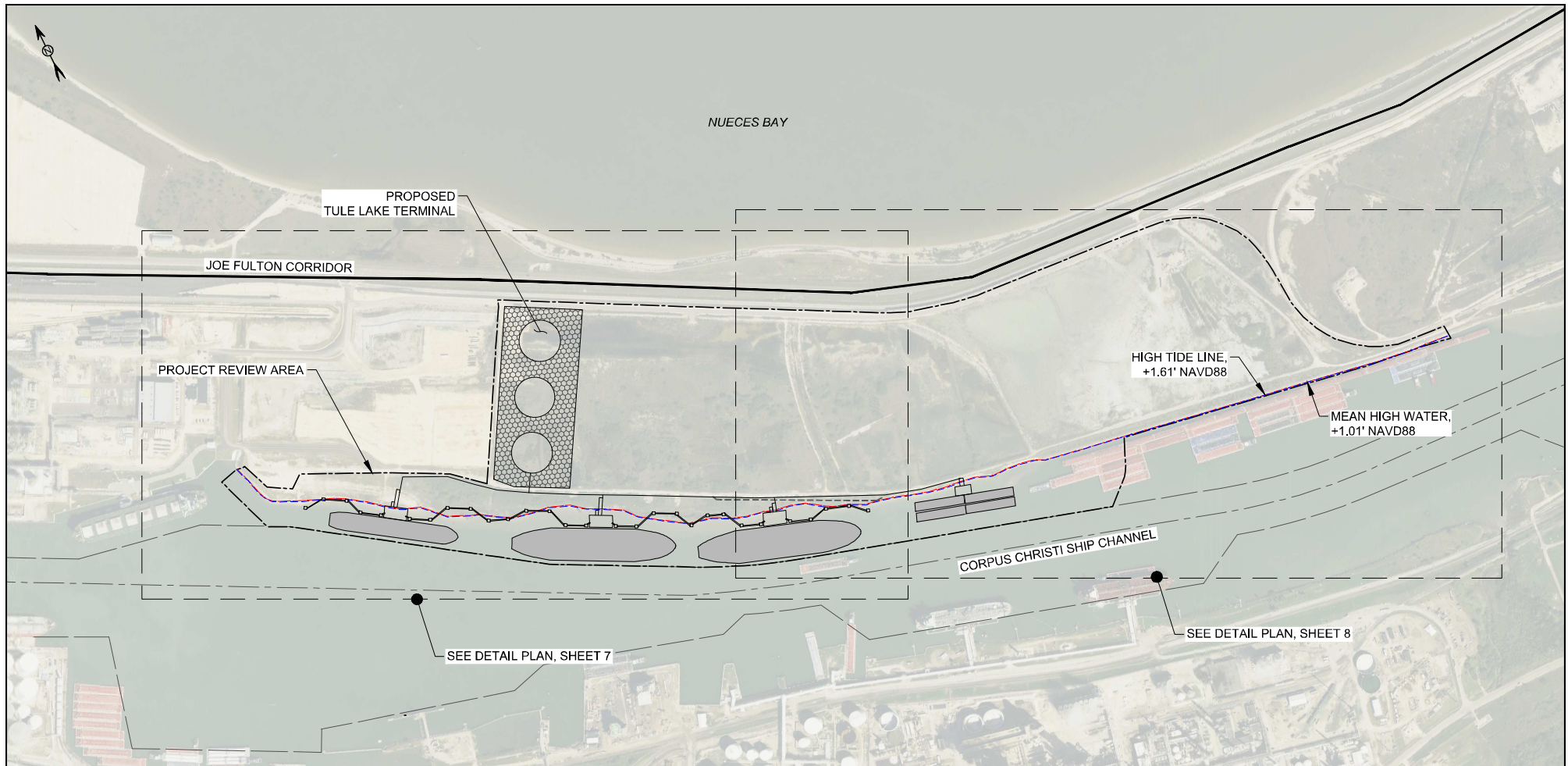


M 711 North Carancahua, Suite 1610
M Corpus Christi, Texas 78401
NOTT TEL: 361-661-3061
MACDONALD Texas Registered Engineering Firm: F-7429

PORT OF CORPUS CHRISTI AUTHORITY

TULE LAKE TERMINAL
 CORPUS CHRISTI, NUECES COUNTY, TX

SCALE: VARIES	WETLAND DELINEATION EXISTING CONDITIONS MAP	DATE: DECEMBER 2021
DWN. BY: SM		SHEET 5 OF 20



0 300 600
SCALE IN FEET

EXISTING CONDITIONS LEGEND

- FILL AREA
- HIGH TIDE LINE (+1.61' NAVD88)
- MEAN HIGH WATER LINE (+1.01' NAVD88)

FOR REVIEW

NO.	DATE	REVISION
1	12/2/21	DRAFT FOR REVIEW



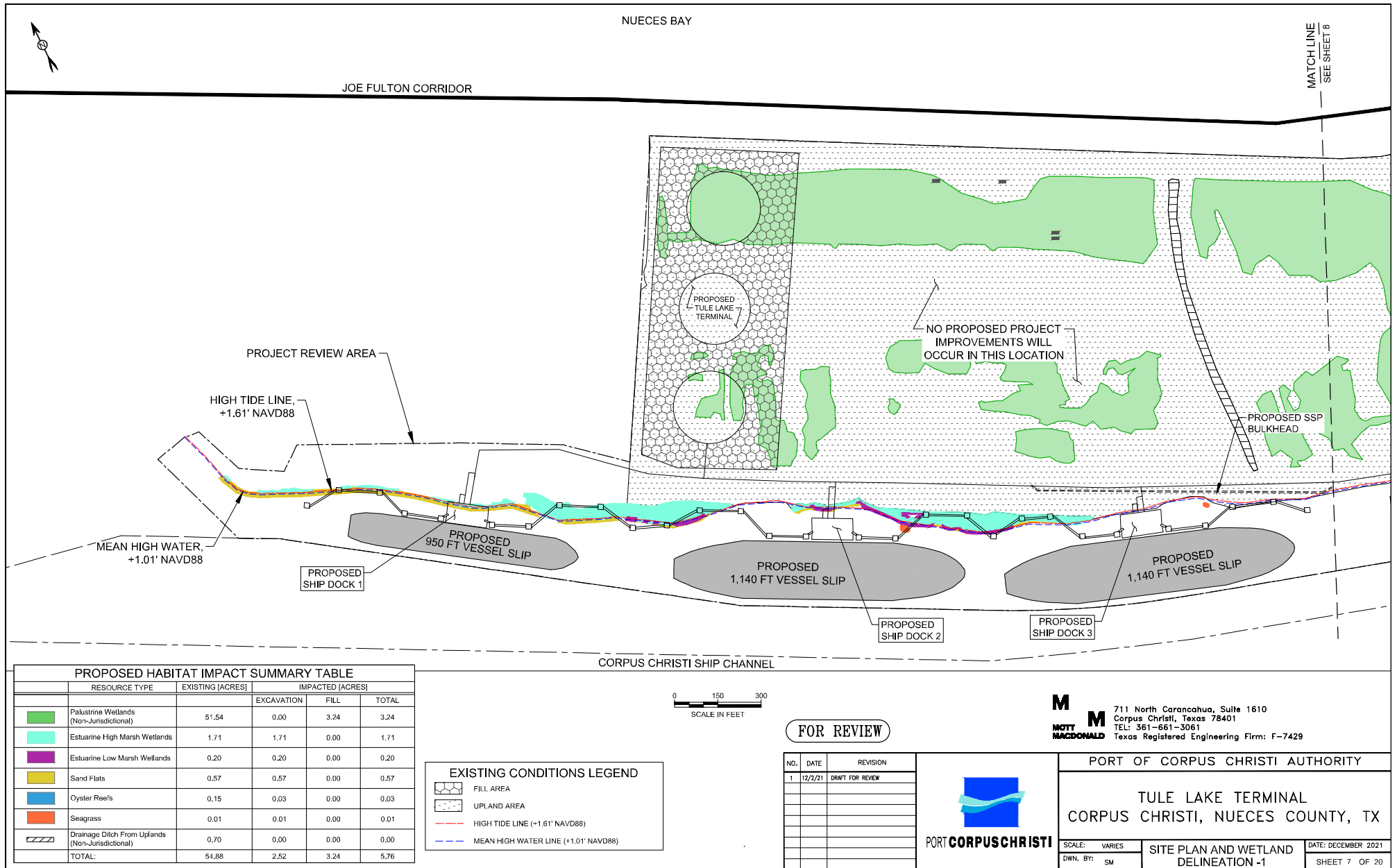
PORT **CORPUSCHRISTI**

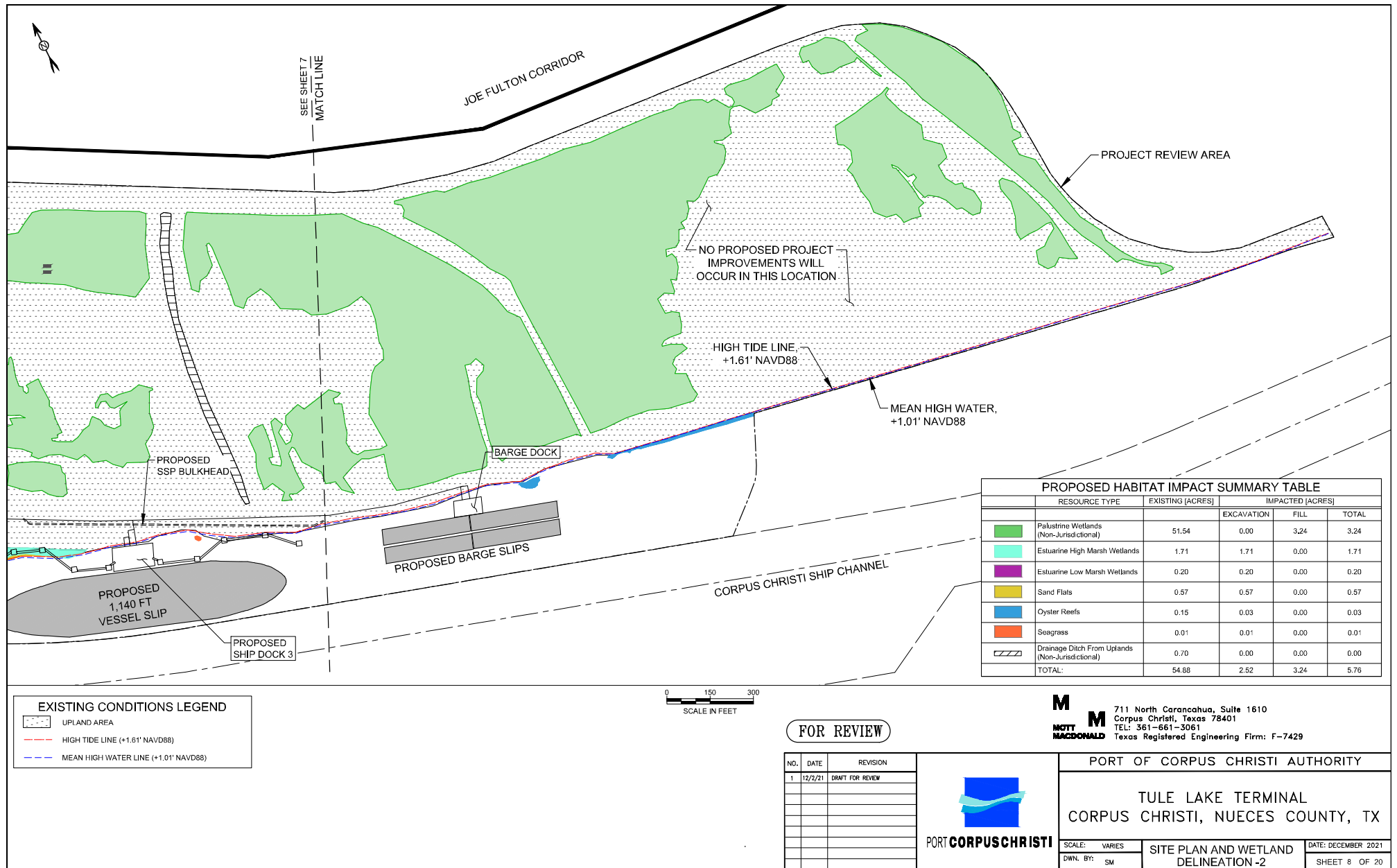
M 711 North Carancahua, Suite 1610
Corpus Christi, Texas 78401
MOTT MACDONALD TEL: 361-661-3061
Texas Registered Engineering Firm: F-7429

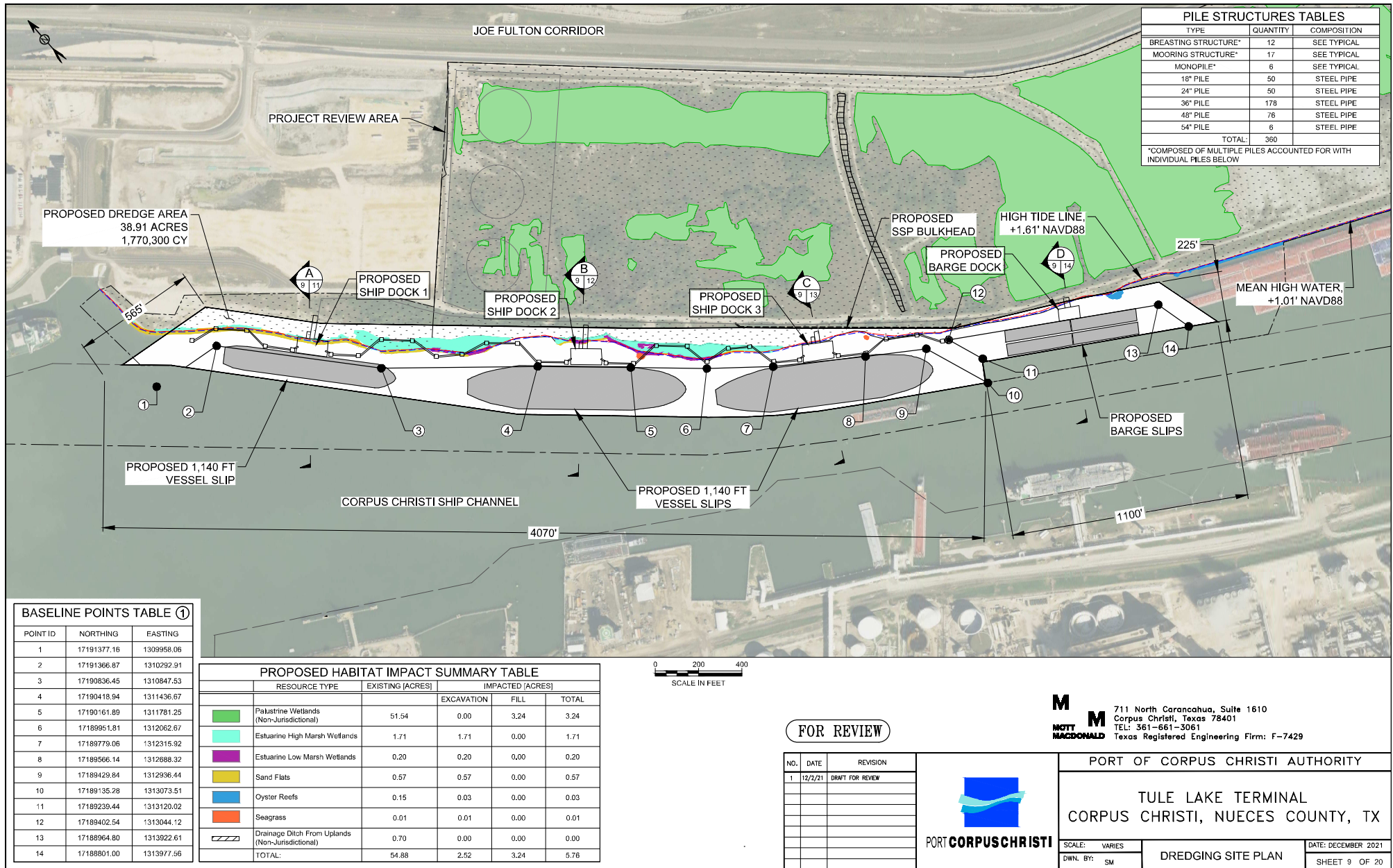
PORT OF CORPUS CHRISTI AUTHORITY

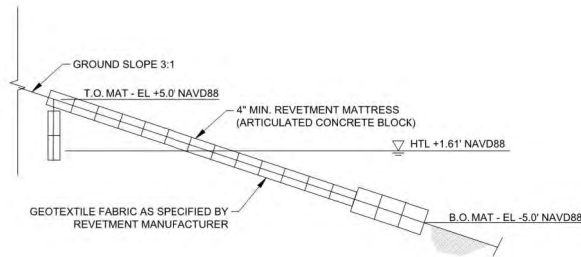
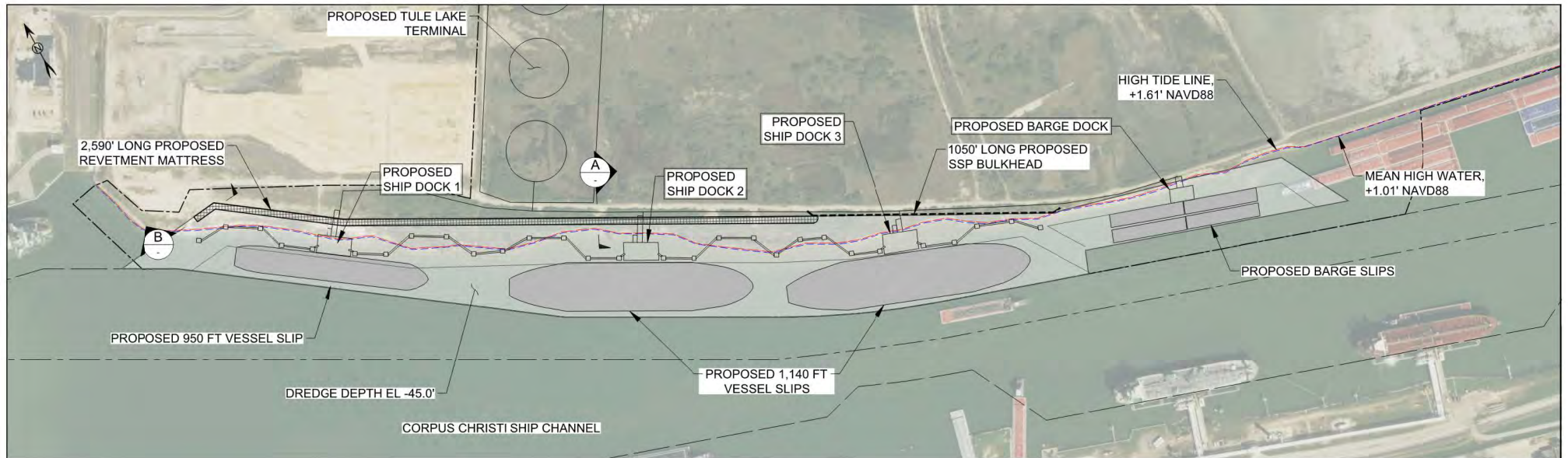
TULE LAKE TERMINAL
CORPUS CHRISTI, NUECES COUNTY, TX

SCALE: VARIES	OVERALL CONCEPTUAL SITE PLAN	DATE: DECEMBER 2021
DWN. BY: SM		SHEET 6 OF 20

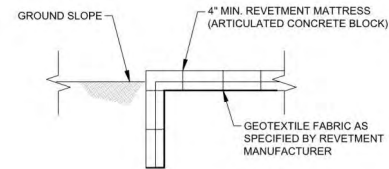








SECTION A
REVETMENT MATTRESS
N.T.S.



SECTION B
REVETMENT MATTRESS EDGE
N.T.S.

REVETMENT MATTRESS NOTES:

1. ALL EXISTING CONTOURS ARE REFERENCED TO NAVD 88 = EL 0.0.
2. FIELD VERIFY ALL DIMENSIONS AND ELEVATIONS. ENSURE PROPER AND TIGHT FIT OF INSTALLED FILTER FABRIC AND REVETMENT MATTRESS AROUND PILES AND THE BULKHEAD.
3. COVER AREA BELOW REVETMENT MATTRESS WITH FILTER FABRIC. OVERLAP ADJACENT STRIPS OF FABRIC A MINIMUM OF 24 INCHES AND ANCHOR WITH SECURING AND STAGGER VERTICAL LAPS 5 FEET.
4. REVETMENT SHALL BE INSTALLED TO FORM A CONTINUOUS UNIT. ADJOINING MATTRESSES SHALL BE INTERCONNECTED PLACED LONGITUDINALLY AND VERTICALLY. LOOSE BLOCKS SHALL NOT BE PERMITTED AND SHALL BE SEALED TO ADJOINING BLOCKS WITH CABLES.
5. INSTALLATION SHALL BE IN FULL COMPLIANCE WITH APPROVED SHOP DRAWINGS AND INSTRUCTIONS PROVIDED BY THE REVETMENT SYSTEM MANUFACTURER.

TOTAL REVETMENT AREA = 1.02 ACRES
TOTAL REVETMENT AREA BELOW HTL = 0.59 ACRES
TOTAL VOLUME REVETMENT BELOW HTL = 495 CY

FOR REVIEW

NO.	DATE	REVISION
1	12/2/21	DRAFT FOR REVIEW

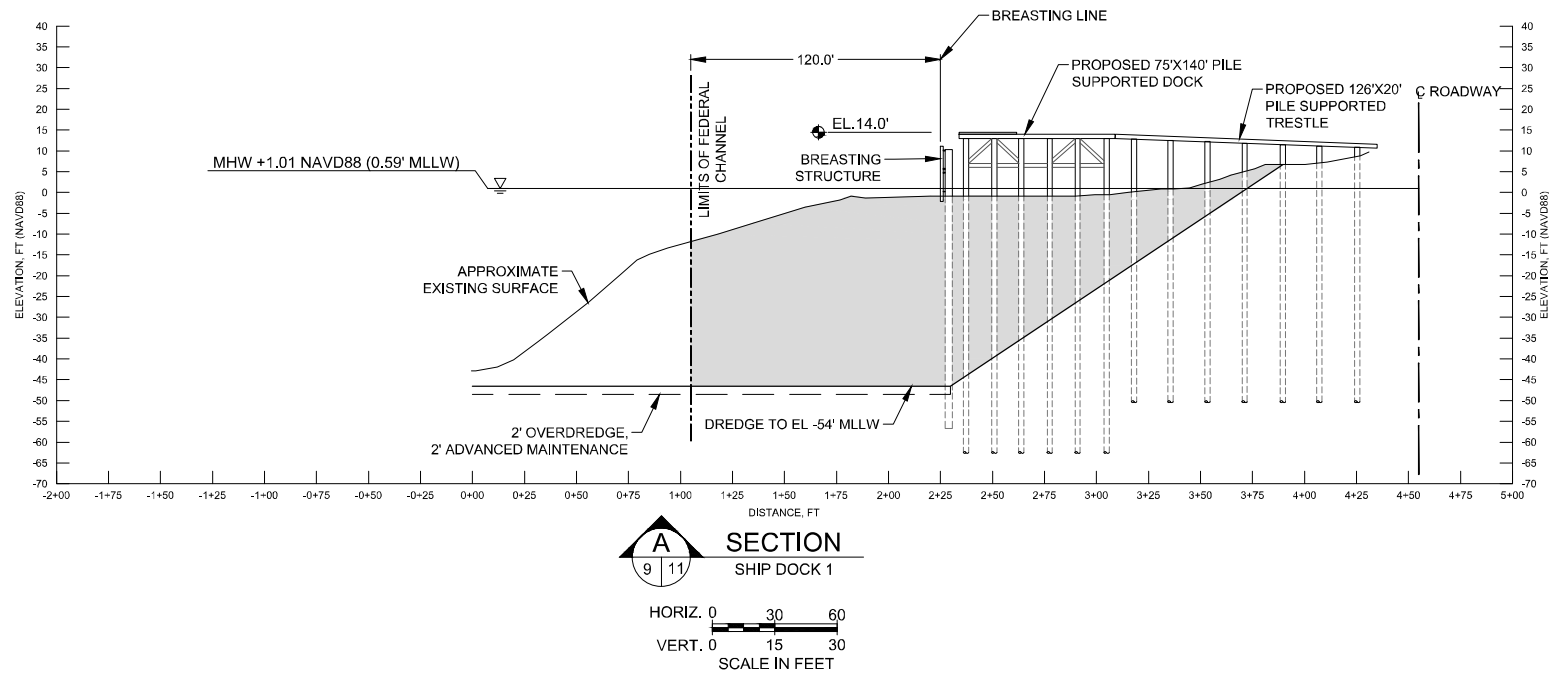


MOTT MACDONALD
711 North Coranchohua, Suite 1610
Corpus Christi, Texas 78401
TEL: 361-661-3061
Texas Registered Engineering Firm: F-7429

PORT OF CORPUS CHRISTI AUTHORITY

TULE LAKE TERMINAL
CORPUS CHRISTI, NUECES COUNTY, TX

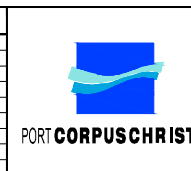
SCALE: VARIES	DATE: DECEMBER 2021
DWN. BY: SM	MATTRESS DETAIL
	SHEET 10 OF 20



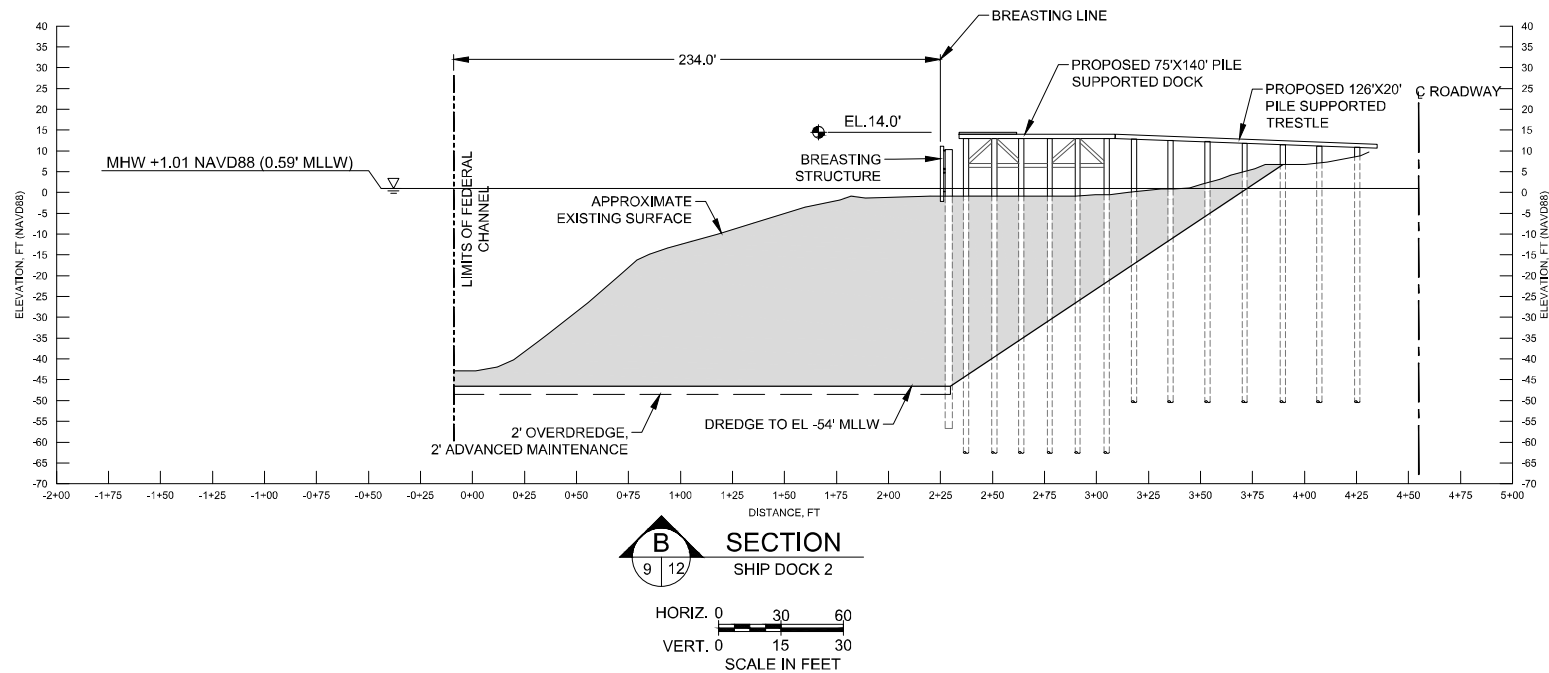
FOR REVIEW

M 711 North Carancahua, Suite 1610
Corpus Christi, Texas 78401
TEL: 361-661-3061
MCDONALD Texas Registered Engineering Firm: F-7429

NO.	DATE	REVISION
1	12/2/21	DRAFT FOR REVIEW



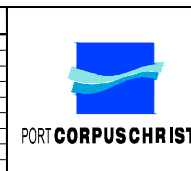
PORT OF CORPUS CHRISTI AUTHORITY		
TULE LAKE TERMINAL CORPUS CHRISTI, NUECES COUNTY, TX		
SCALE: VARIES	DATE: DECEMBER 2021	
DWN. BY: SM	SECTION - SHIP DOCK 1	SHEET 11 OF 20



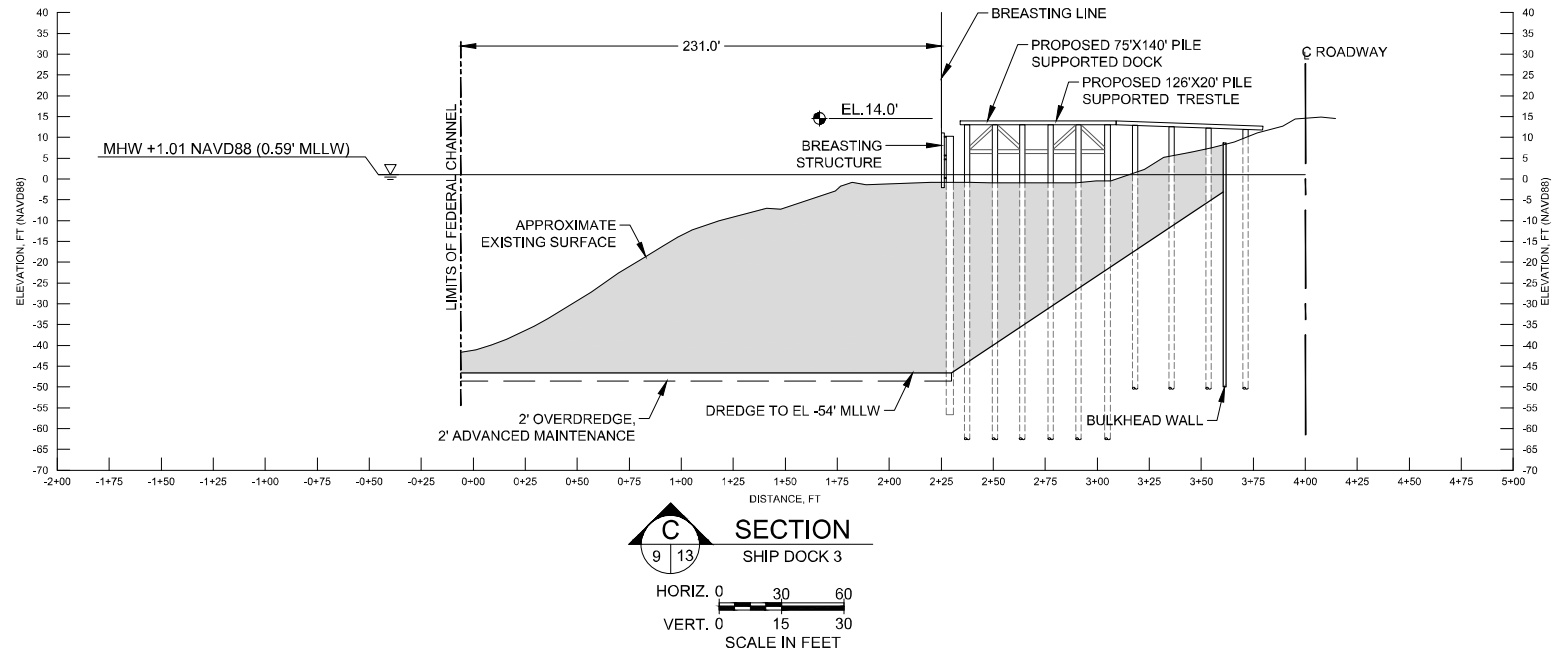
FOR REVIEW

M 711 North Carancahua, Suite 1610
Corpus Christi, Texas 78401
TEL: 361-661-3061
MCDONALD Texas Registered Engineering Firm: F-7429

NO.	DATE	REVISION
1	12/2/21	DRAFT FOR REVIEW



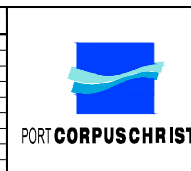
PORT OF CORPUS CHRISTI AUTHORITY		
TULE LAKE TERMINAL CORPUS CHRISTI, NUECES COUNTY, TX		
SCALE: VARIES	DATE: DECEMBER 2021	
DWN. BY: SM	SECTION - SHIP DOCK 2	SHEET 12 OF 20



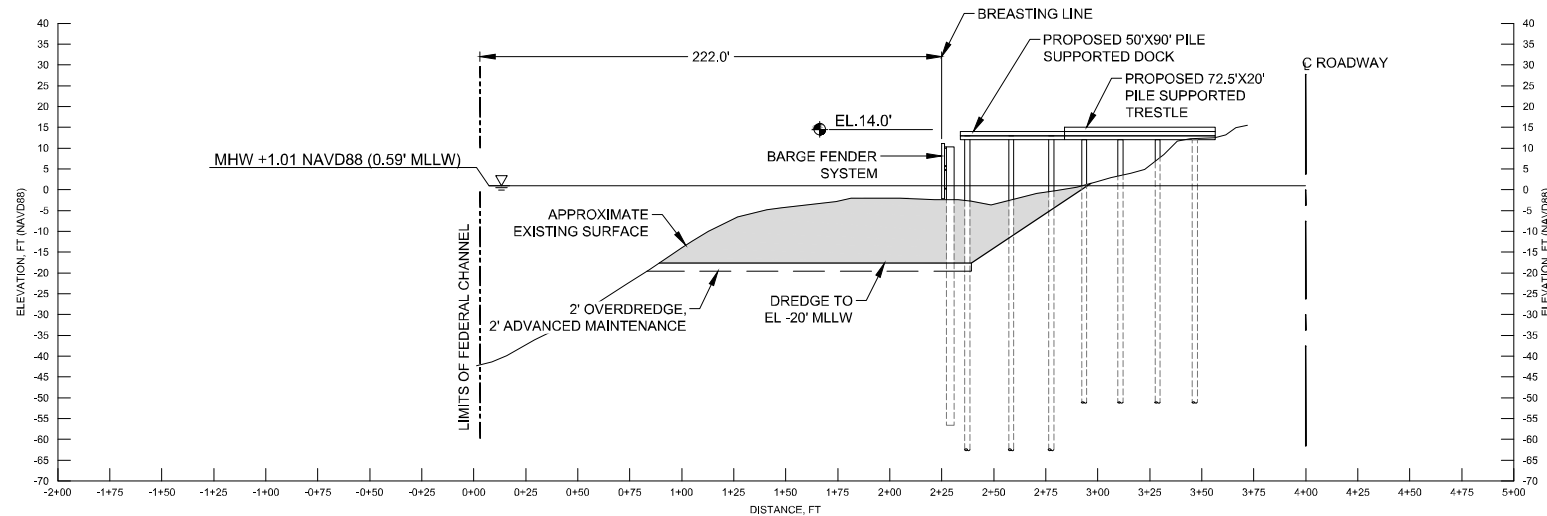
FOR REVIEW

M 711 North Carancahua, Suite 1610
Corpus Christi, Texas 78401
TEL: 361-661-3061
MCDONALD Texas Registered Engineering Firm: F-7429

NO.	DATE	REVISION
1	12/2/21	DRAFT FOR REVIEW



PORT OF CORPUS CHRISTI AUTHORITY		
TULE LAKE TERMINAL CORPUS CHRISTI, NUECES COUNTY, TX		
SCALE: VARIES	DATE: DECEMBER 2021	
DWN. BY: SM	SECTION - SHIP DOCK 3	SHEET 13 OF 20



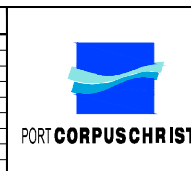
SECTION
BARGE DOCK

HORIZ. 0 30 60
VERT. 0 15 30
SCALE IN FEET

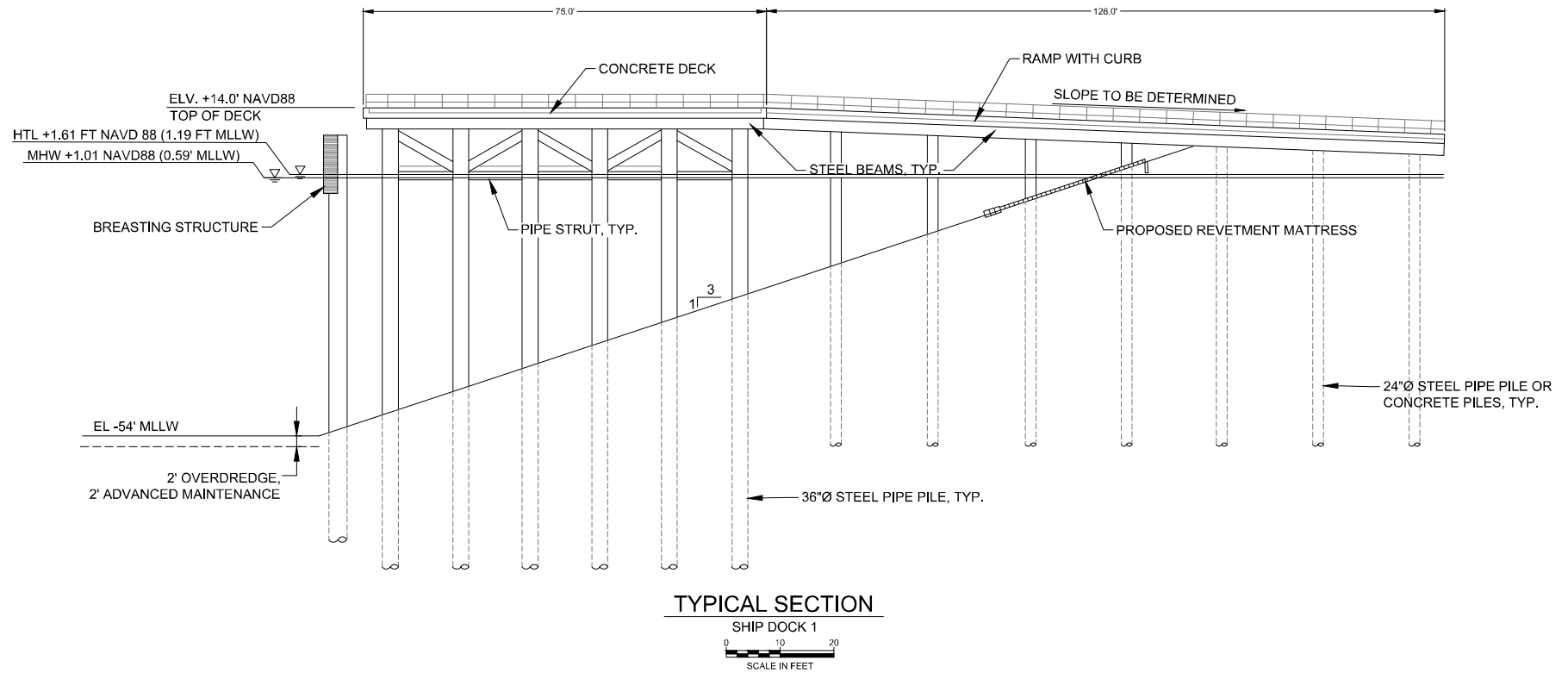
FOR REVIEW

M 711 North Carancahua, Suite 1610
Corpus Christi, Texas 78401
TEL: 361-661-3061
MCDONALD Texas Registered Engineering Firm: F-7429

NO.	DATE	REVISION
1	12/2/21	DRAFT FOR REVIEW



PORT OF CORPUS CHRISTI AUTHORITY		
TULE LAKE TERMINAL CORPUS CHRISTI, NUECES COUNTY, TX		
SCALE: VARIES	DATE: DECEMBER 2021	
DWN. BY: SM	SECTION - BARGE DOCK	SHEET 14 OF 20



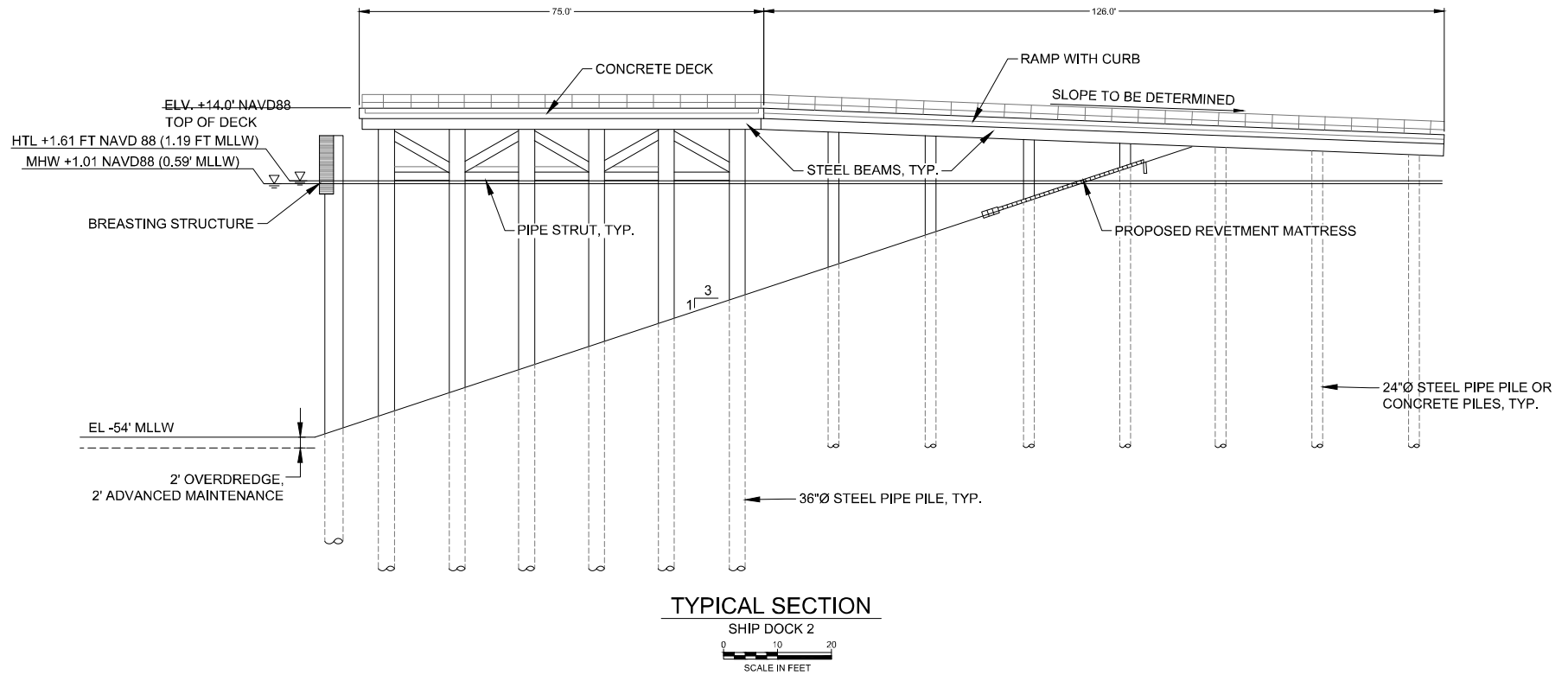
FOR REVIEW

M 711 North Carancahua, Suite 1610
M Corpus Christi, Texas 78401
NOTT TEL: 361-661-3061
MACDONALD Texas Registered Engineering Firm: F-7429

NO.	DATE	REVISION
1	12/2/21	DRAFT FOR REVIEW



PORT OF CORPUS CHRISTI AUTHORITY		
TULE LAKE TERMINAL CORPUS CHRISTI, NUECES COUNTY, TX		
SCALE: VARIES	DATE: DECEMBER 2021	
DWN. BY: SM	TYPICAL SECTION - DOCK 1	SHEET 15 OF 20



TYPICAL SECTION

SHIP DOCK 2
SCALE IN FEET

FOR REVIEW

M 711 North Carancahua, Suite 1610
Corpus Christi, Texas 78401
MOTT MACDONALD TEL: 361-661-3061
Texas Registered Engineering Firm: F-7429

NO.	DATE	REVISION
1	12/2/21	DRAFT FOR REVIEW

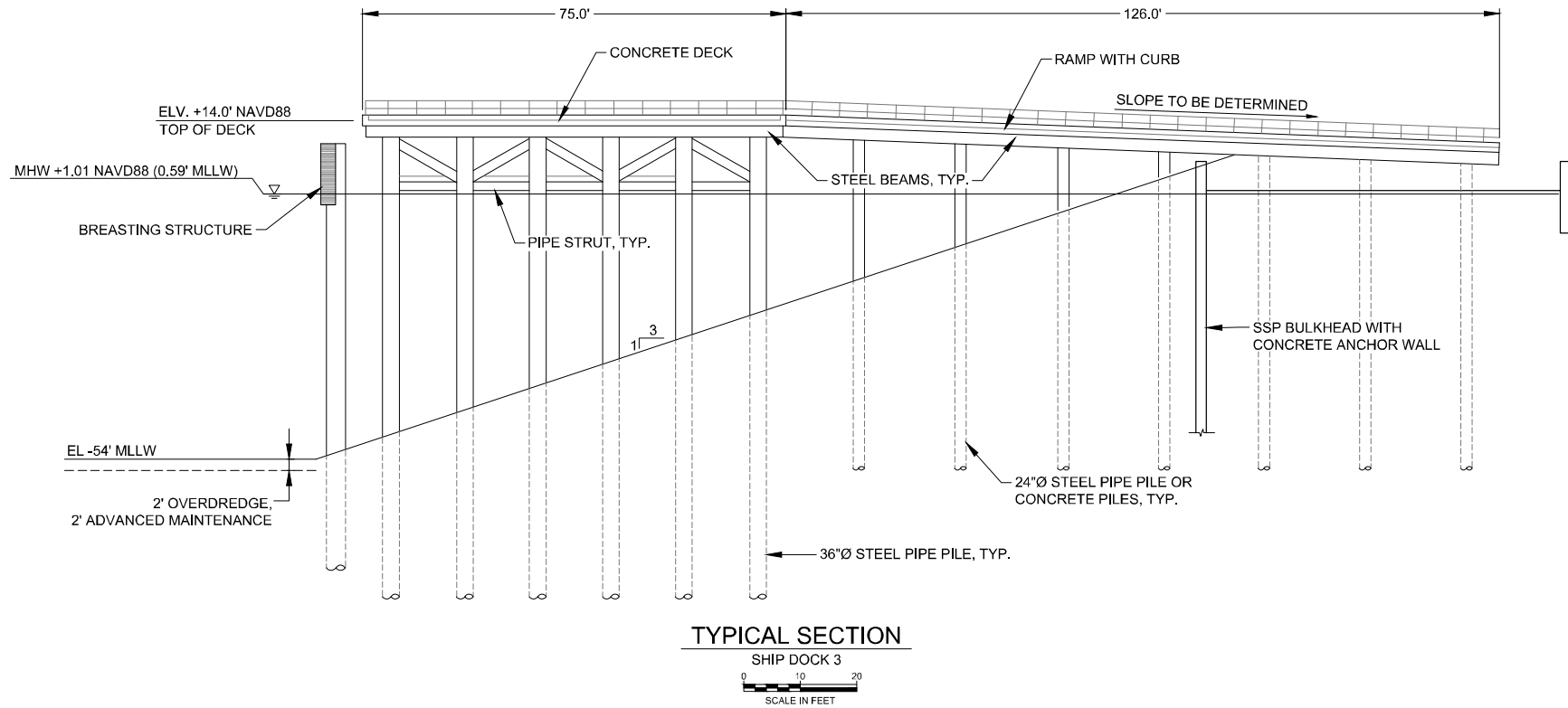


PORT OF CORPUS CHRISTI

PORT OF CORPUS CHRISTI AUTHORITY

TULE LAKE TERMINAL
CORPUS CHRISTI, NUECES COUNTY, TX

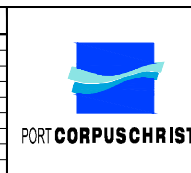
SCALE: VARIES	DATE: DECEMBER 2021
DWN. BY: SM	TYPICAL SECTION - DOCK 2
	SHEET 16 OF 20



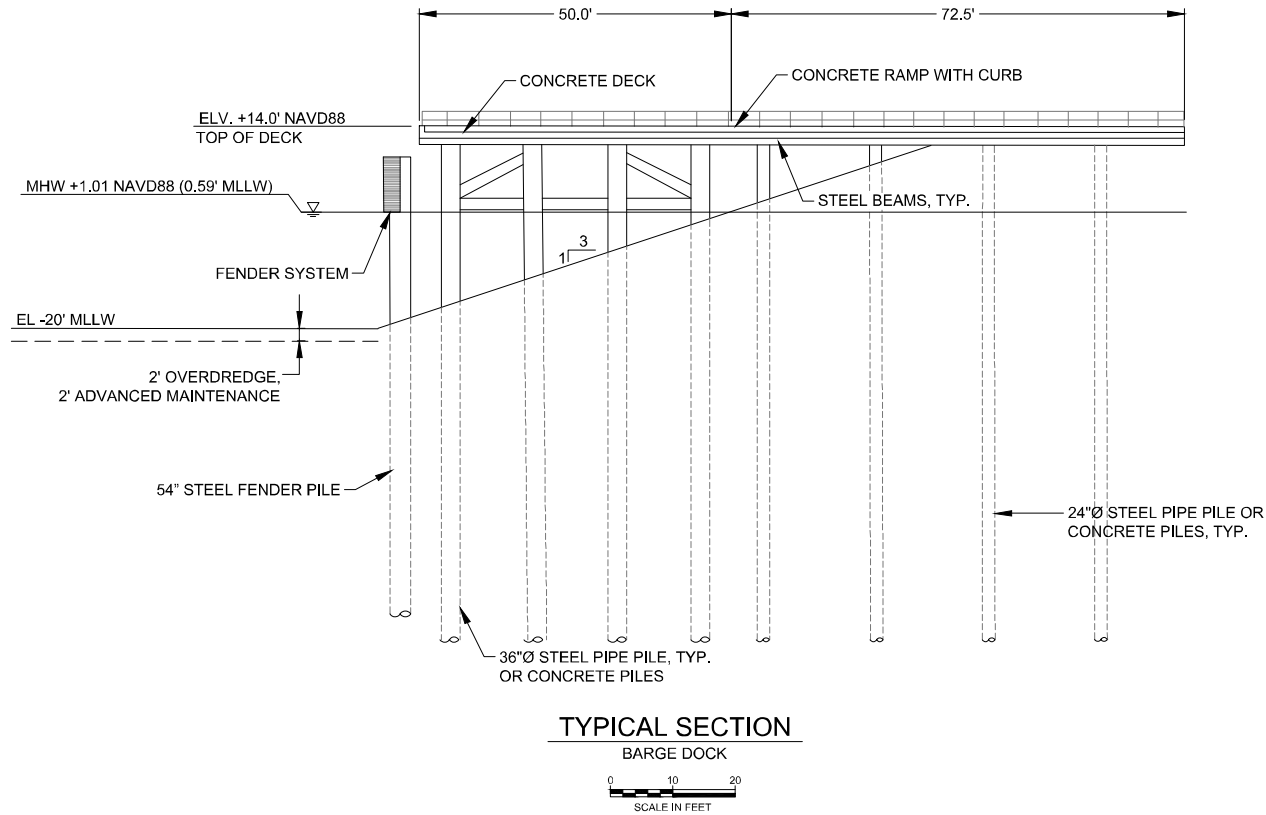
FOR REVIEW

M 711 North Carancahua, Suite 1610
MACDONALD Corpus Christi, Texas 78401
 TEL: 361-661-3061
 Texas Registered Engineering Firm: F-7429

NO.	DATE	REVISION
1	12/2/21	DRAFT FOR REVIEW



PORT OF CORPUS CHRISTI AUTHORITY		
TULE LAKE TERMINAL CORPUS CHRISTI, NUECES COUNTY, TX		
SCALE: VARIES	DATE: DECEMBER 2021	
DWN. BY: SM	TYPICAL SECTION - DOCK 3	SHEET 17 OF 20



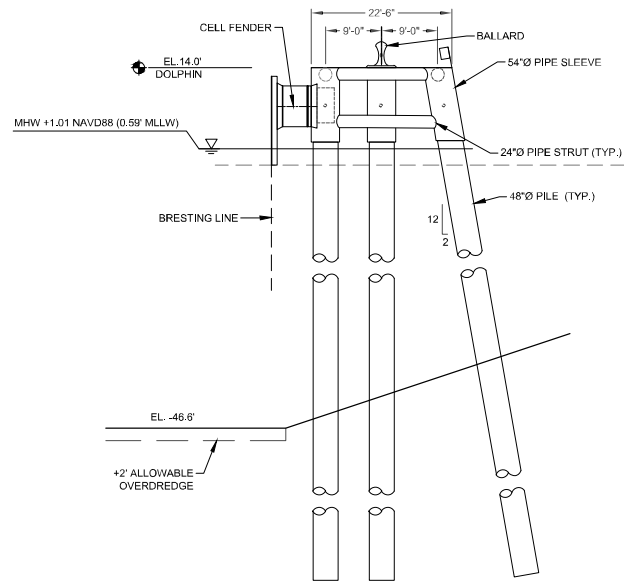
FOR REVIEW

M 711 North Carancahua, Suite 1610
Corpus Christi, Texas 78401
TEL: 361-661-3061
Texas Registered Engineering Firm: F-7429
MOTT MACDONALD

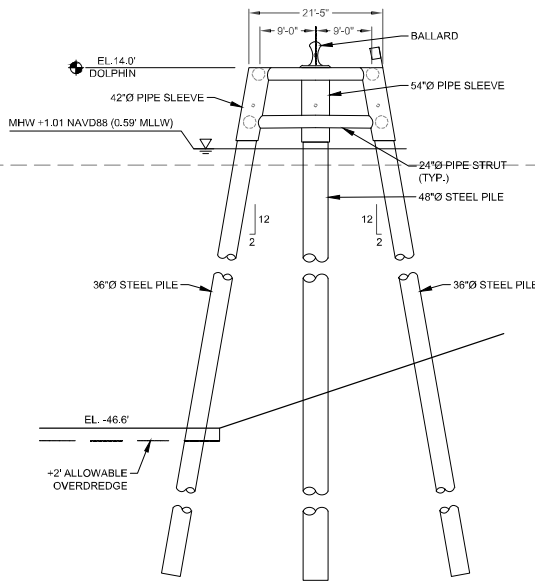
NO.	DATE	REVISION
1	12/2/21	DRAFT FOR REVIEW



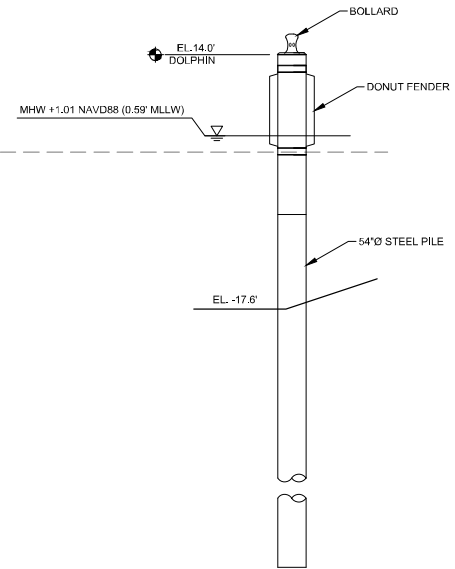
PORT OF CORPUS CHRISTI AUTHORITY		
TULE LAKE TERMINAL CORPUS CHRISTI, NUECES COUNTY, TX		
SCALE: VARIES	TYPICAL SECTION - BARGE DOCK	DATE: DECEMBER 2021
DWN. BY: SM		SHEET 18 OF 20



TYPICAL SECTION 1
BREASTING DOLPHIN
(22'-6" X 19'-0")
0 10 20
SCALE IN FEET



TYPICAL SECTION 2
MOORING DOLPHIN
(22'-6" X 19'-0")
0 10 20
SCALE IN FEET



TYPICAL SECTION 3
MONOPILE DOLPHIN
0 10 20
SCALE IN FEET

FOR REVIEW

M 711 North Carancahua, Suite 1610
Corpus Christi, Texas 78401
MOTT MACDONALD TEL: 361-661-3061
Texas Registered Engineering Firm: F-7429

NO.	DATE	REVISION
1	12/2/21	DRAFT FOR REVIEW



PORT OF CORPUS CHRISTI AUTHORITY		
TULE LAKE TERMINAL CORPUS CHRISTI, NUECES COUNTY, TX		
SCALE: VARIES	DATE: DECEMBER 2021	
DWN. BY: SM	TYP SECTION - DOLPHIN	SHEET 19 OF 20



0 2,000 4,000
SCALE IN FEET

FOR REVIEW

M 711 North Carancahua, Suite 1610
Corpus Christi, Texas 78401
TEL: 361-661-3061
Texas Registered Engineering Firm: F-7429
MOTT MACDONALD

NO.	DATE	REVISION
1	12/2/21	DRAFT FOR REVIEW



PORT OF CORPUS CHRISTI AUTHORITY		
TULE LAKE TERMINAL CORPUS CHRISTI, NUECES COUNTY, TX		
SCALE: VARIES	DMPA LOCATIONS	DATE: DECEMBER 2021
DWN. BY: SM		SHEET 20 OF 20