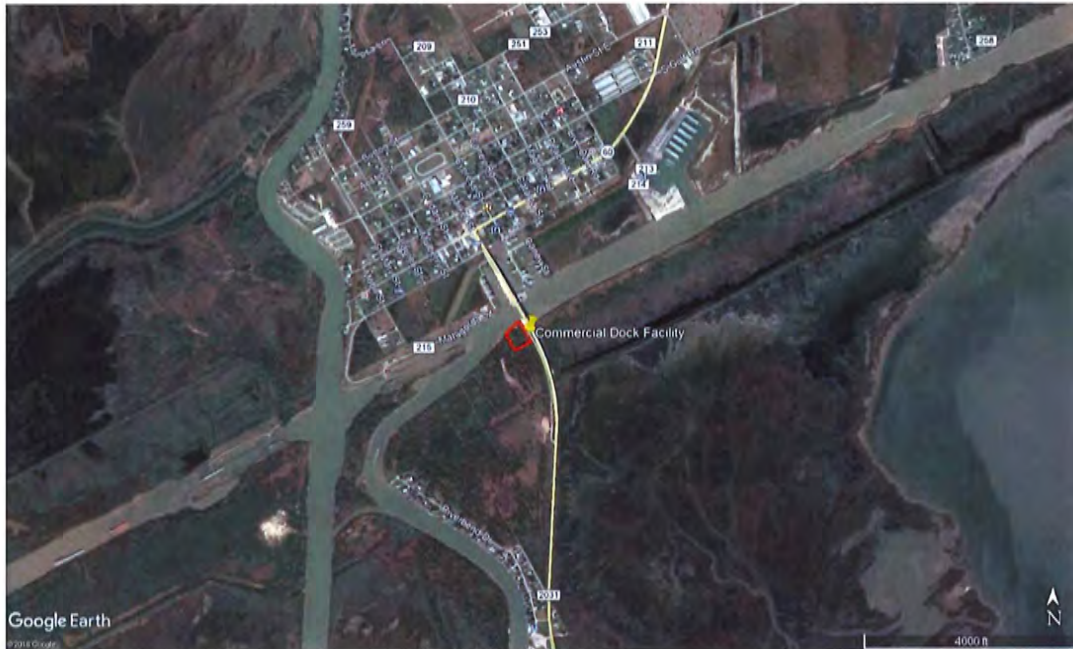




OCT 23 2019



Janet Botello  
HJN 180084.001PA  
15 October 2019  
Page 5



SHEET 1a: LOCATION

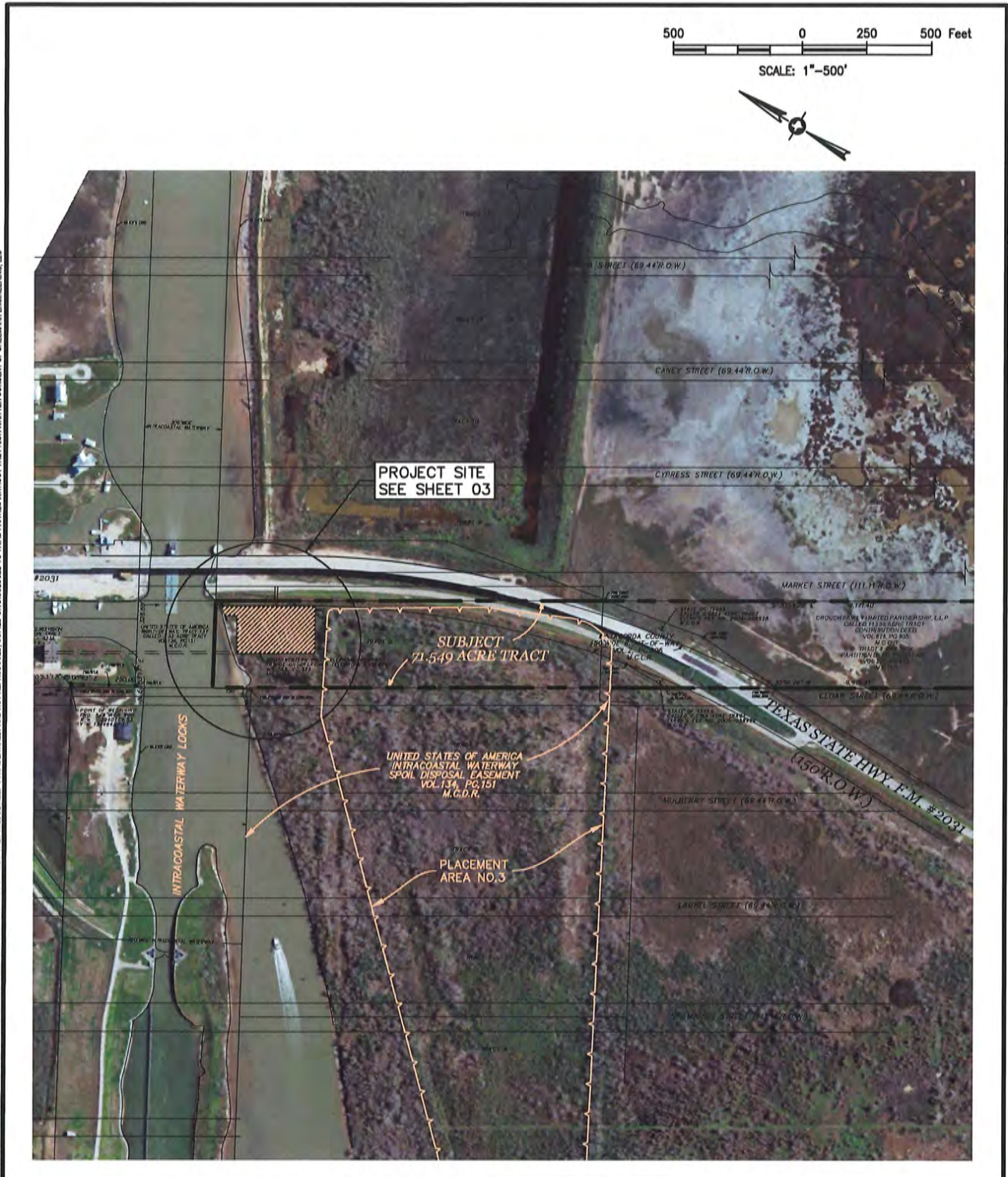


SHEET 1b: SITE

Commercial Dock, Matagorda



OCT 23 2019



SUPPLEMENTARY PROJECTS FOR PRESTIGE OYSTERS - BUILDING AND SHIPWRIGHTS/IT/ISP AERIAL SITE PLAN.DWG  
 INFORMATION AND DATA CONTAINED IN THIS DRAWING ARE STRICTLY CONFIDENTIAL AND ARE SUPPLIED ON THE UNDERSTANDING THAT THEY WILL BE HELD CONFIDENTIAL AND NOT REPRODUCED, COPIED OR DISCLOSED TO THIRD PARTIES WITHOUT THE PRIOR WRITTEN CONSENT OF SHELMARK ENGINEERING, LLC



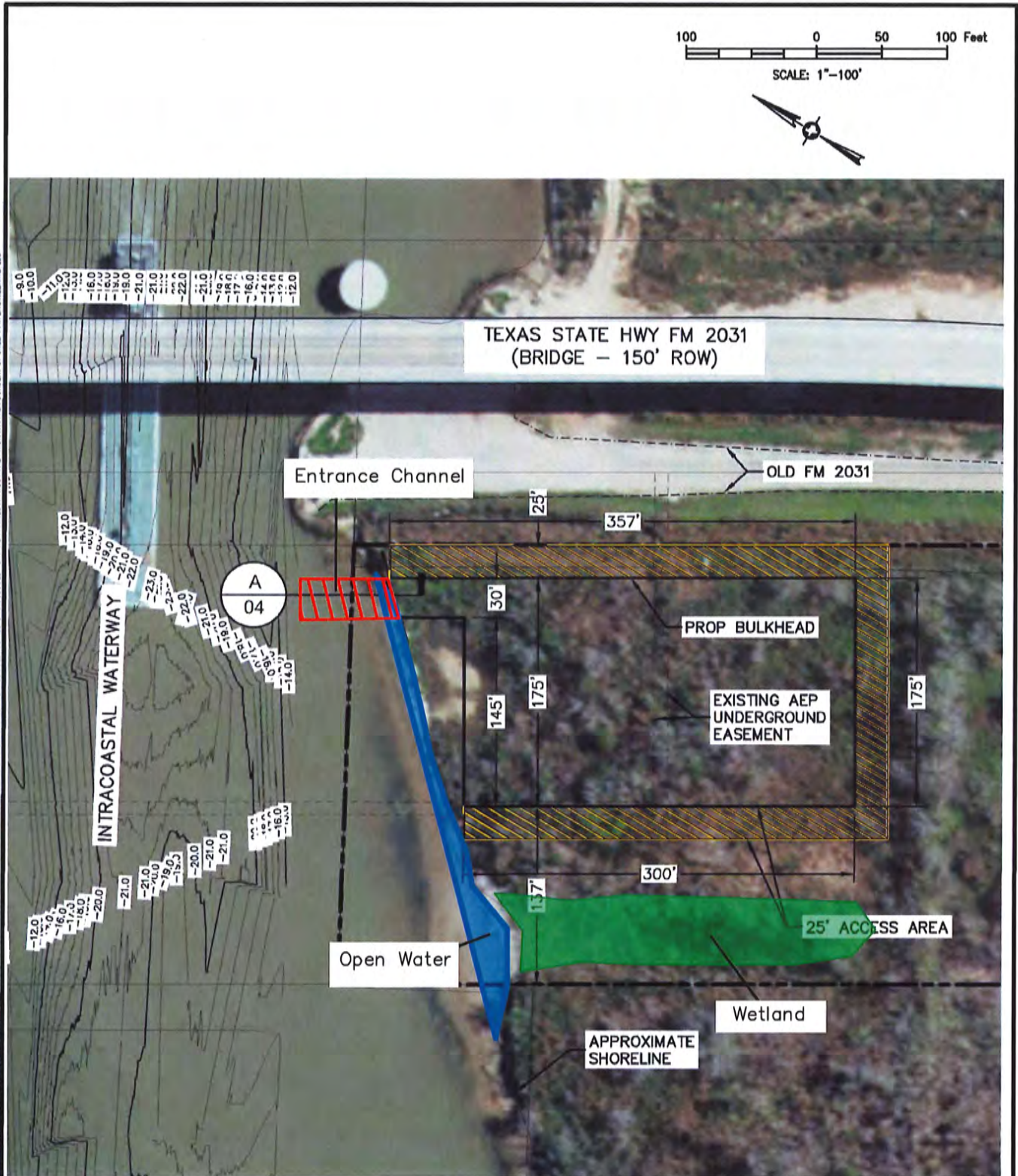
DWG NAME:  
**AERIAL SITE MAP**

**Proposed Commercial Dock**  
**F.M. 2031 - MATAGORDA, TEXAS**

ELEMENTS SHOWN ON THIS PLAN SET ARE SCHEMATIC FOR PERMITTING ONLY; NOT FOR CONSTRUCTION.

BY: CLI	DATE: 06/13/18	PERMIT No: ----	SCALE: 1" = 500'	JOB No: 17-126	SHEET 02
------------	-------------------	--------------------	---------------------	-------------------	-------------





PROJECT: 2017-06-28 PRESTIGE OYSTERS - BULKHEAD AND SLIPWAYS/PERMIT: 71269 SITE PLAN DWG  
 INFORMATION AND DATA CONTAINED IN THIS DRAWING ARE STRICTLY CONFIDENTIAL AND ARE SUPPLIED ON THE UNDERSTANDING THAT THEY WILL BE HELD CONFIDENTIALLY AND NOT REPRODUCED, COPIED OR DISCLOSED TO THIRD PARTIES WITHOUT THE PRIOR WRITTEN CONSENT OF SHELMARK ENGINEERING, LLC.



DWG NAME:  
**SITE PLAN**

**Proposed Commercial Dock  
F.M. 2031 - MATAGORDA, TEXAS**

ELEMENTS SHOWN ON THIS PLAN  
SET ARE SCHEMATIC FOR PERMITTING  
ONLY; NOT FOR CONSTRUCTION.

BY:  
CLI

DATE:  
06/13/18

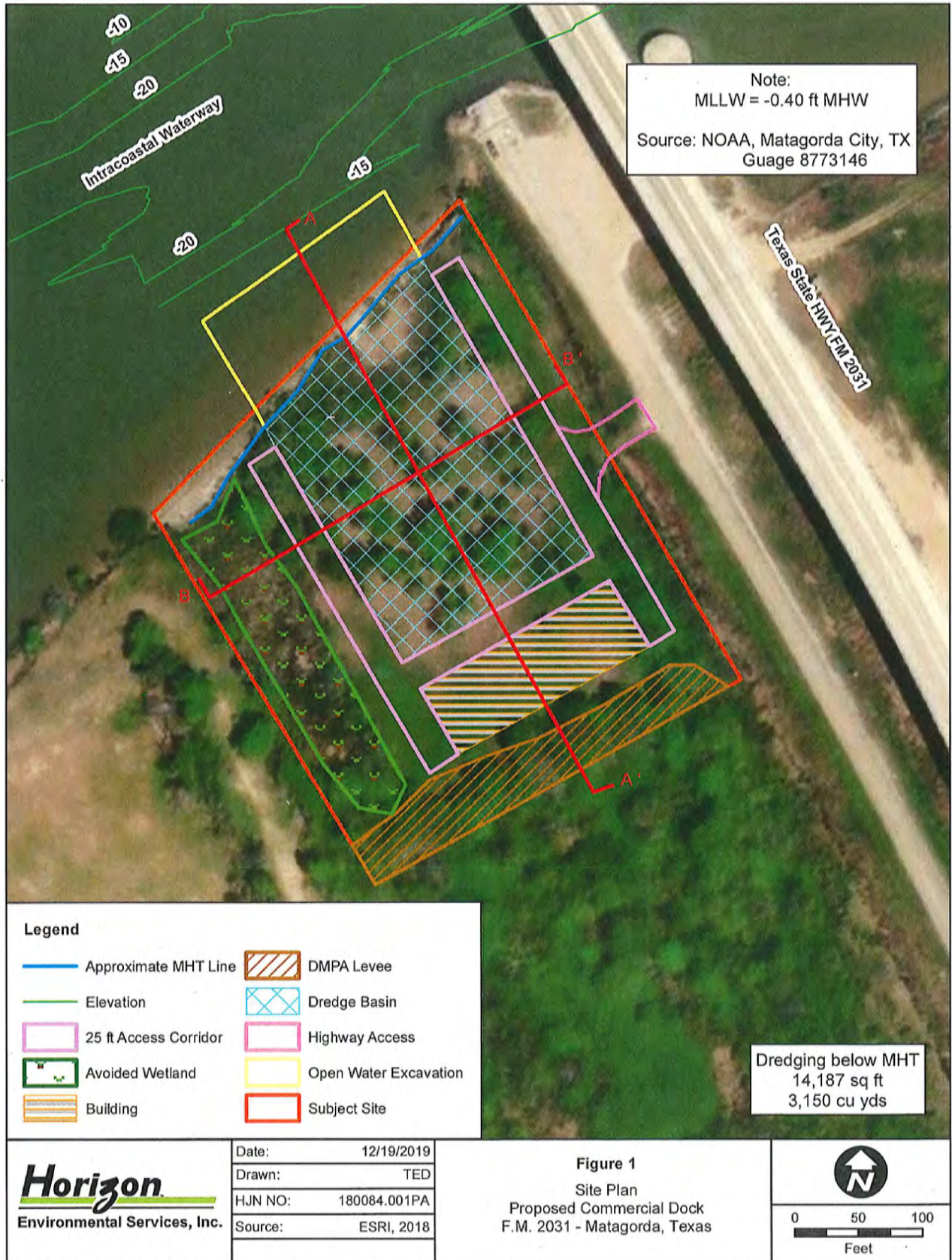
PERMIT No:  
----

SCALE:  
1" = 100'

JOB No:  
17-126

SHEET  
03

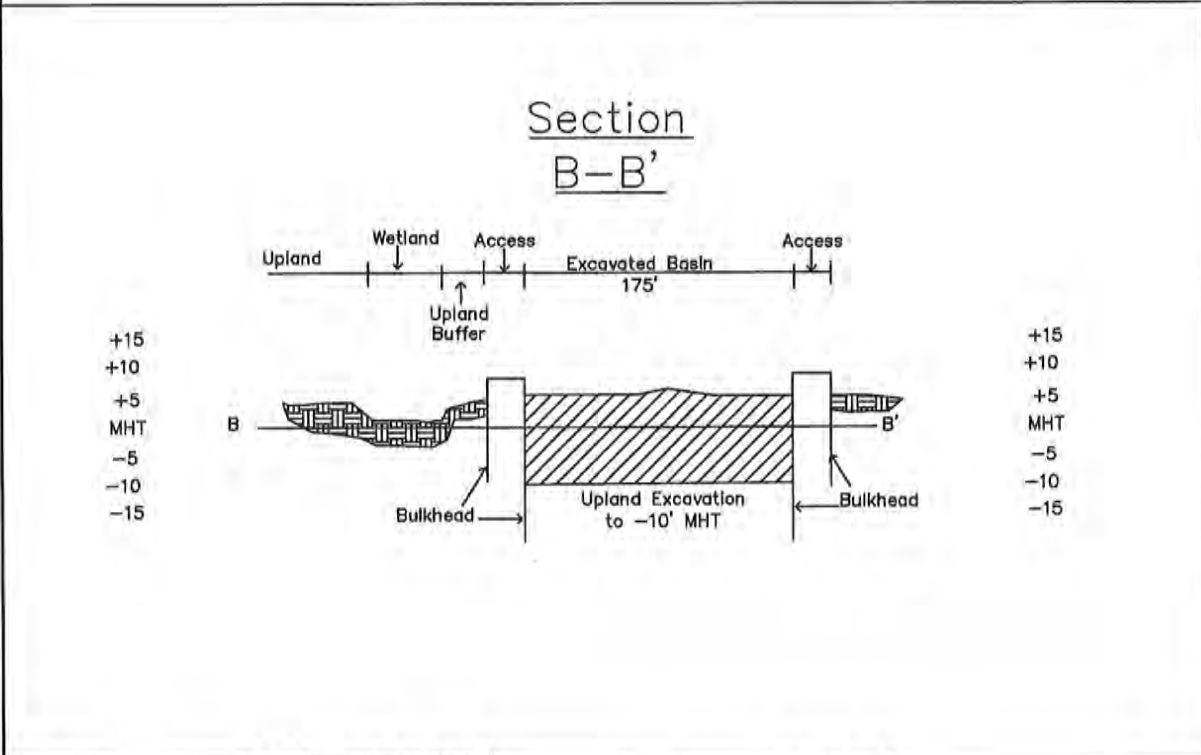
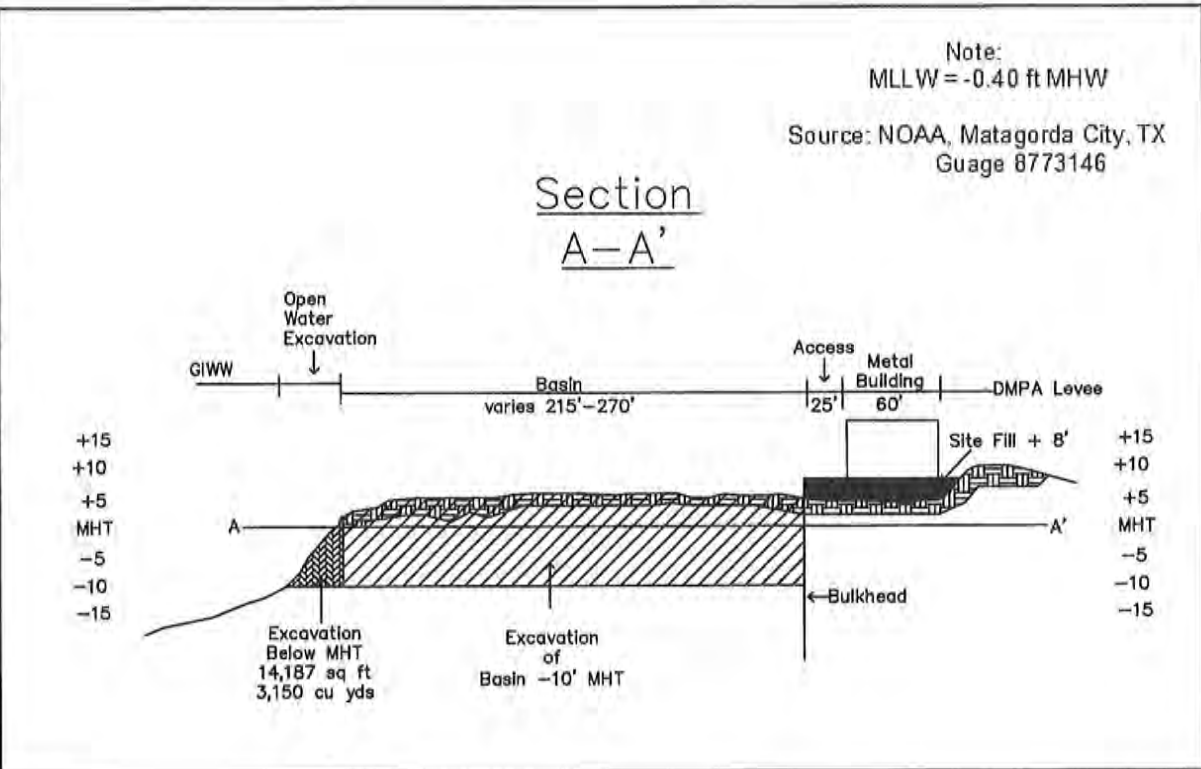




DEC 20 2019

180084-001PA\_02A\_Cross Section.dwg | GLS | 12/19/2019

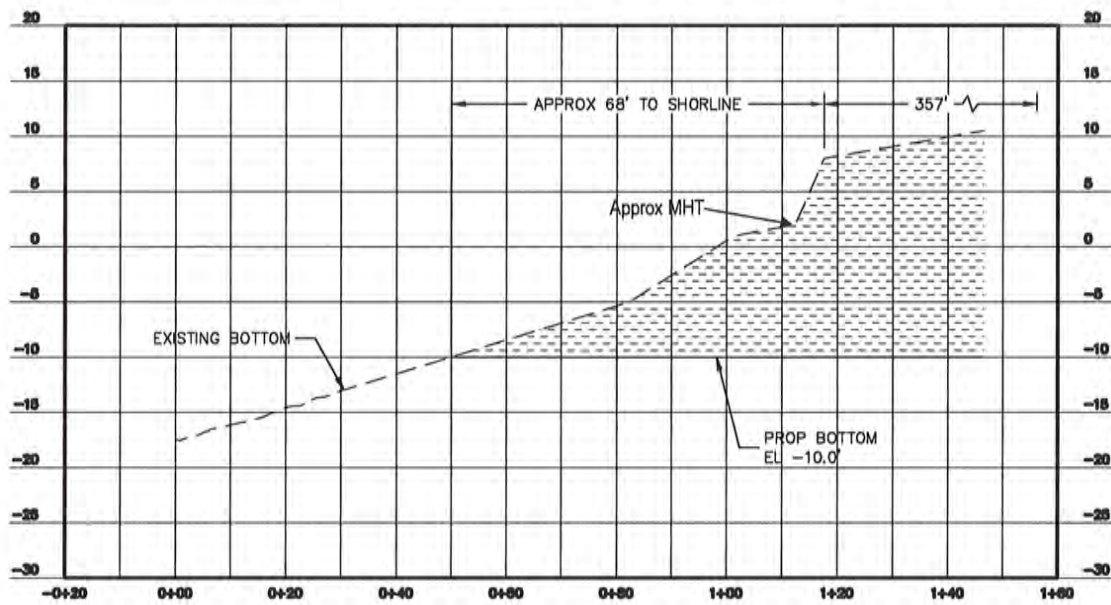
DEC 20 2019



	Date: 12/19/2019	<b>Figure 2</b> Cross Sections Proposed Commercial Dock F.M. 2031 Matagorda, Matagorda County, Texas
	Drawn: GLS	
	HJN NO: 180084	
	Source: USDA, 2016	



OCT 23 2019



S:\PROJECTS\2017 PROJECTS\17-026 PRESTIGE OYSTERS - BUILDING AND EQUIPMENT\PERMITS\17-026 DREDGE SEC ALDING  
 INFORMATION AND DATA CONTAINED IN THIS DRAWING ARE STRICTLY CONFIDENTIAL AND ARE SUPPLIED ON THE UNDERSTANDING THAT THEY WILL BE HELD CONFIDENTIAL AND NOT REPRODUCED, COPIED OR DISCLOSED TO THIRD PARTIES WITHOUT THE PRIOR WRITTEN CONSENT OF SHELMARK ENGINEERING, LLC



DWG NAME:  
**MARINA SECTION A**

Proposed Commercial Dock  
**F.M. 2031 - MATAGORDA, TEXAS**

ELEMENTS SHOWN ON THIS PLAN  
 SET ARE SCHEMATIC FOR PERMITTING  
 ONLY; NOT FOR CONSTRUCTION.

BY:  
 CLI

DATE:  
 06/13/18

PERMIT No:  
 ----

SCALE:  
 N.T.S.

JOB No:  
 17-126

SHEET  
 04