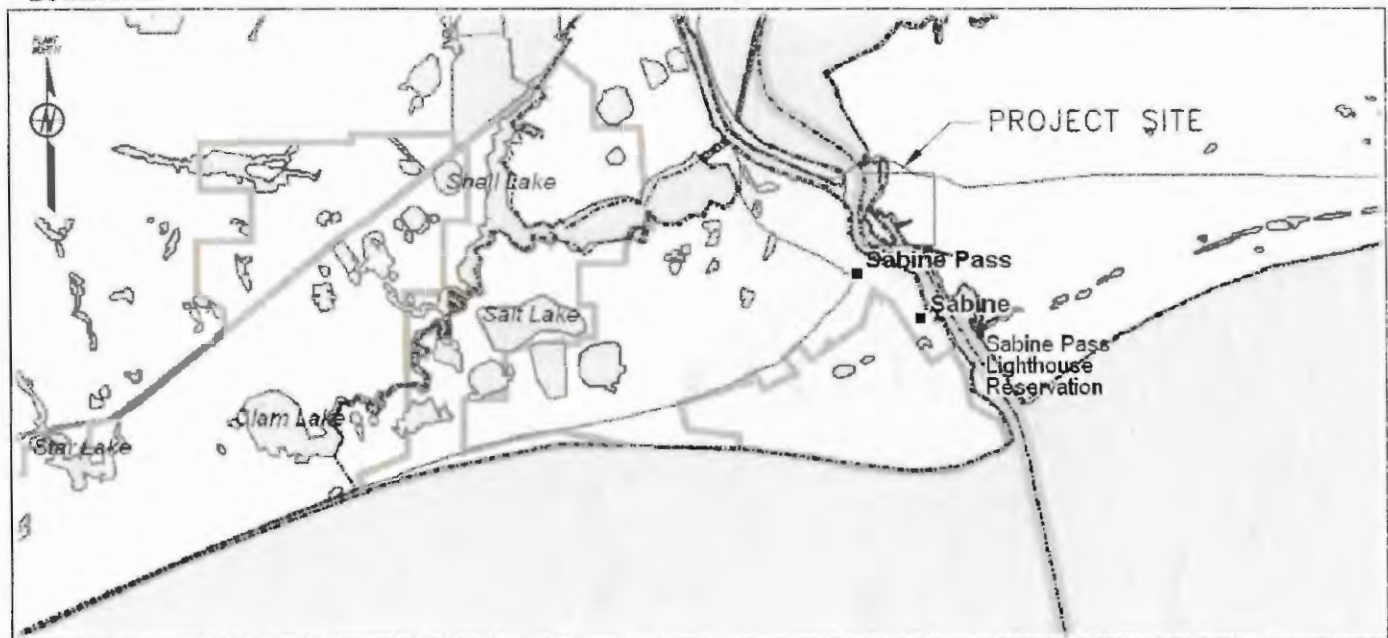


Sabine Pass LNG, L.P. SWG-2004-00465
 Sabine Pass and Gulf of Mexico, Cameron Parish,
 Louisiana. Sheet 1 of 7.

VICINITY MAP
 N.T.S.



LOCATION MAP
 N.T.S.

CHENIERE

CKD. APR.

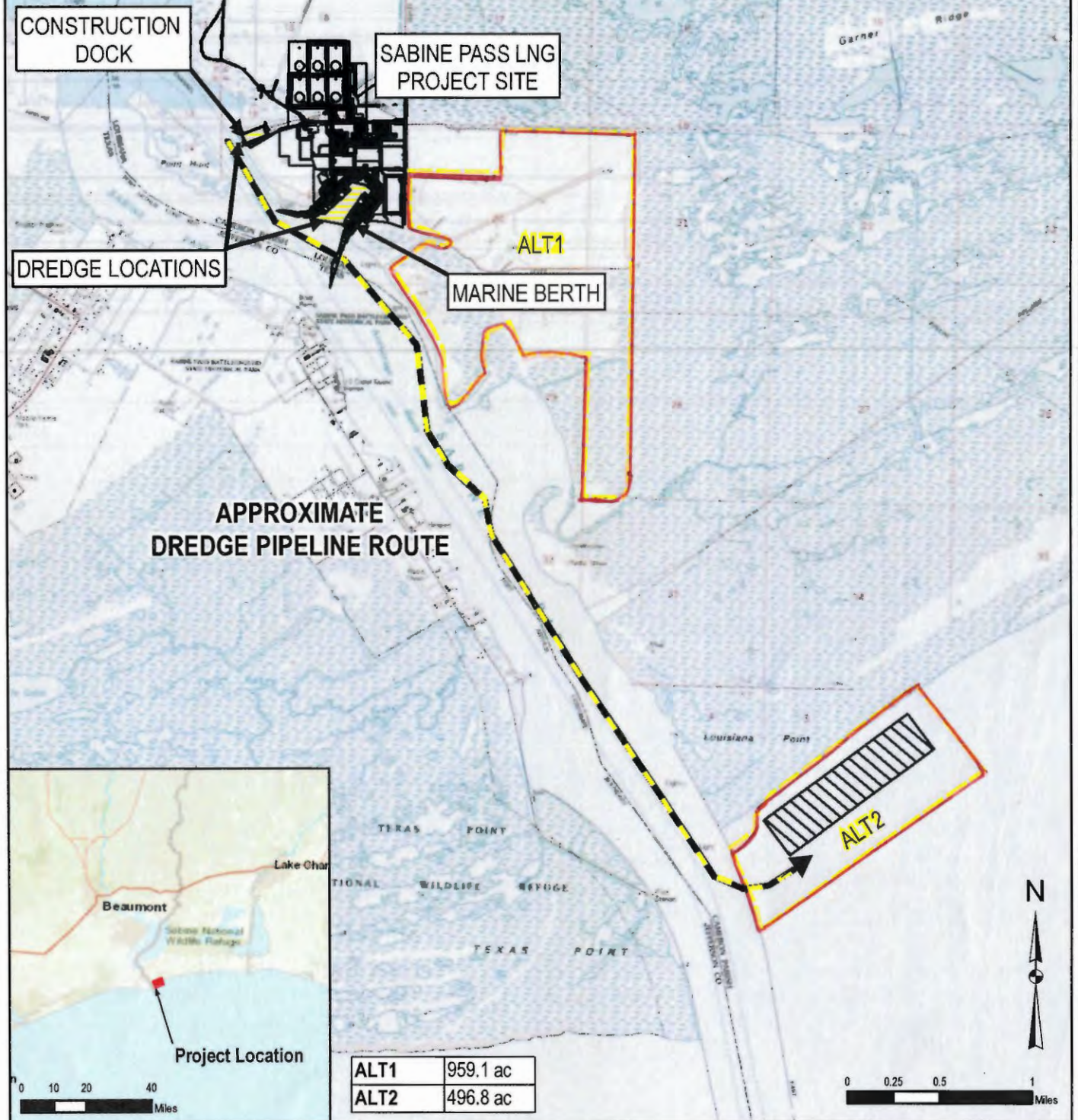
DRAWN BY RMB	DATE 05/09/08
CHECKED BY	DATE
APPROVED BY	DATE
SCALE: NONE	DATE

SABINE PASS LNG, L.P.
 DREDGE MATERIAL MANAGEMENT PLAN
 PROJECT VICINITY MAP

Engineering and
 Construction Department

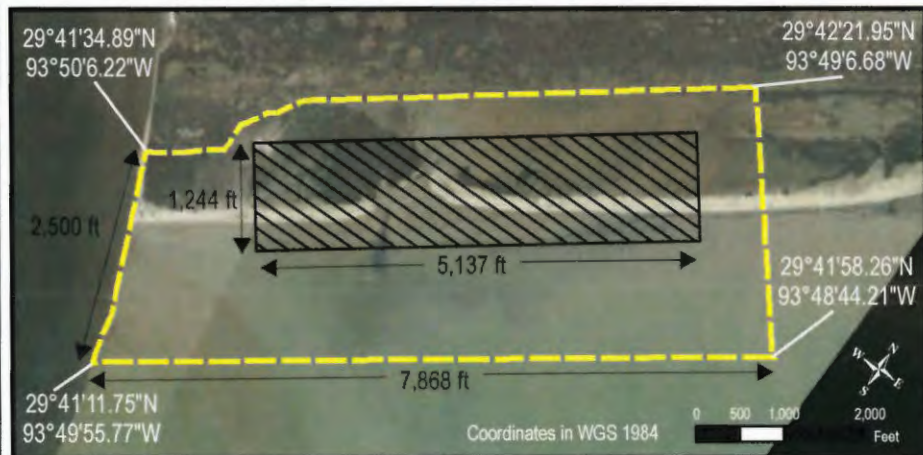
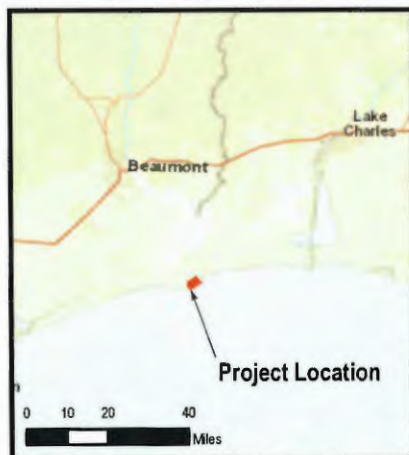
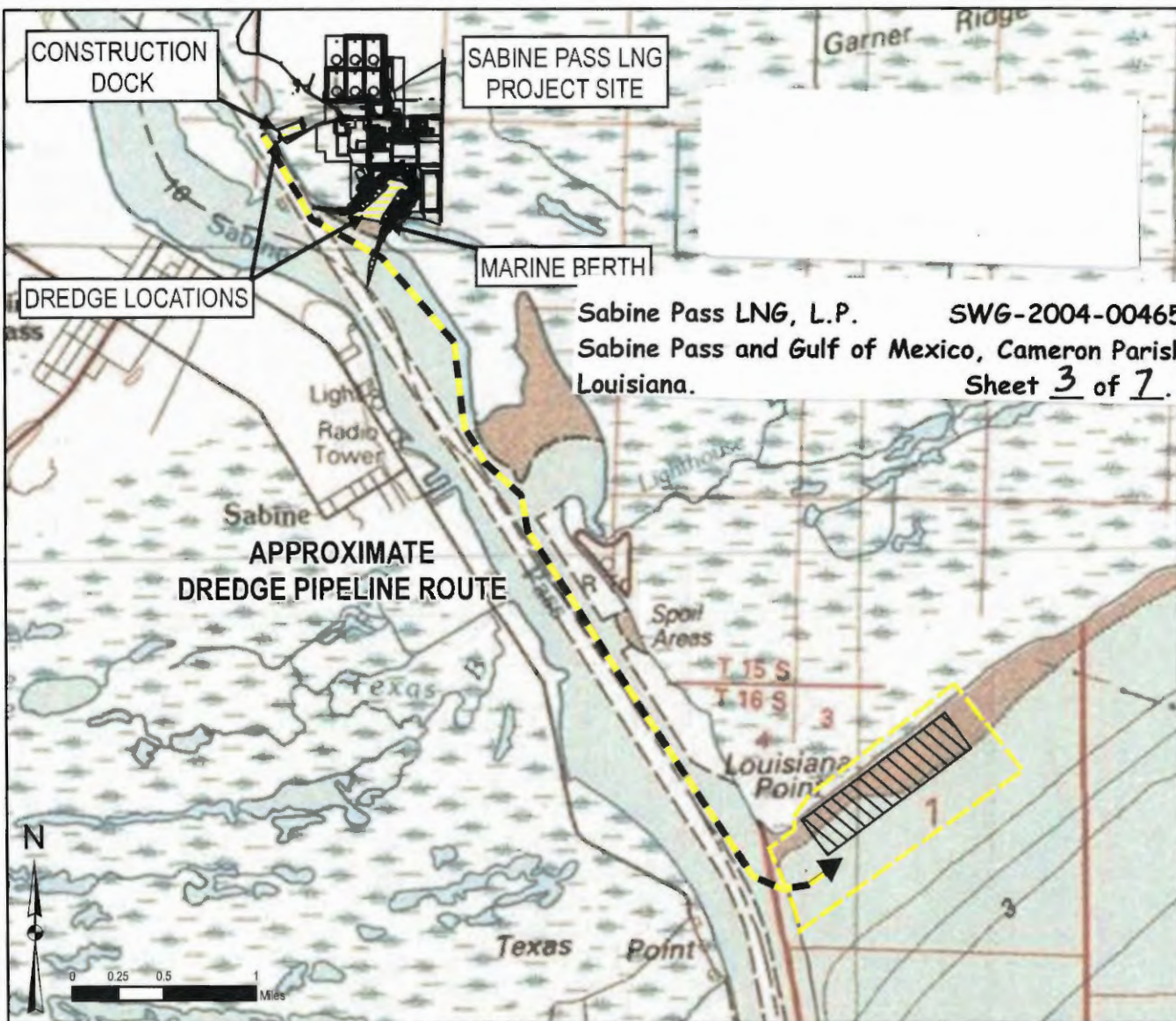
FIGURE 1

Sabine Pass LNG, L.P. SWG-2004-00465
Sabine Pass and Gulf of Mexico, Cameron Parish,
Louisiana. Sheet 2 of 7.



<p>Scale: 1 in = 0.8 miles Date: 6/28/2018 Drawn by: AN</p>		<p>Prepared For:</p> <p>CHENIERE</p> <p>Prepared By:</p> <p>BIO-WEST COASTAL DIVISION</p>	<p>SABINE PASS LNG, L.P. DREDGE MATERIAL MANAGEMENT PLAN Proposed Dredge Material Placement Location</p> <p>Cameron Parish, Louisiana FIGURE 2</p>
---	--	---	---

AUG 11 2017



Dredge Pipeline Route
 Dredge Locations
 Original DPMA (146.7 ac)
 Proposed Dredge Material Placement Area (496.8 ac)

Scale: 1 in = 0.9 miles Date: 3/31/2017 Drawn by: DAG

Prepared For:

CHENIERE

Prepared By:

BIO-WEST COASTAL DIVISION

SABINE PASS LNG, L.P.
DREDGE MATERIAL MANAGEMENT PLAN
Proposed Dredge Material Placement Location

Cameron Parish, Louisiana **FIGURE 2**

JUN 28 2018

NOAA NATIONAL WATER LEVEL OBSERVATION
NETWORK – SABINE PASS
MHW = 1.507
MSL = 1.343'
MLW = 1.174'

SECTION "A"- "A"
N.T.S.

Sabine Pass LNG, L.P. SWG-2004-00465
Sabine Pass and Gulf of Mexico, Cameron Parish,
Louisiana. Sheet 4 of 7.

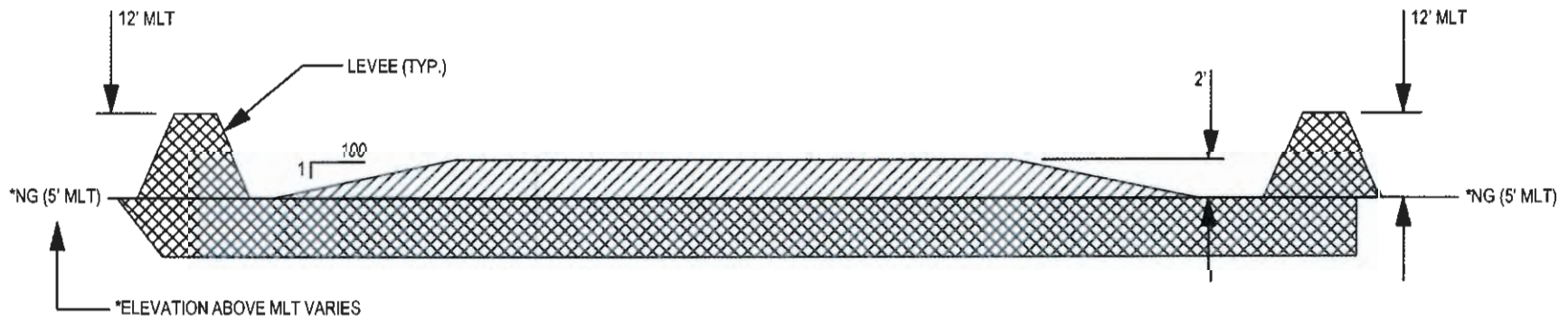


ILLUSTRATION NOT TO SCALE

Prepared by:



SABINE PASS LNG, L.P.
DREDGE MATERIAL MANAGEMENT PLAN
ALT1 CROSS SECTION

Prepared for:



FIGURE 8

Project No: 2162

Date: 06/28/18

Parish: Cameron, Louisiana

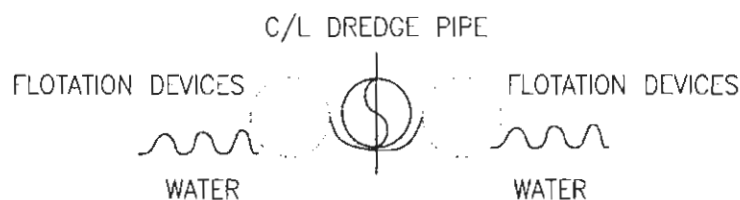
Scale: NTS

Drawn By: AN

File: Fig8_USACE.pdf

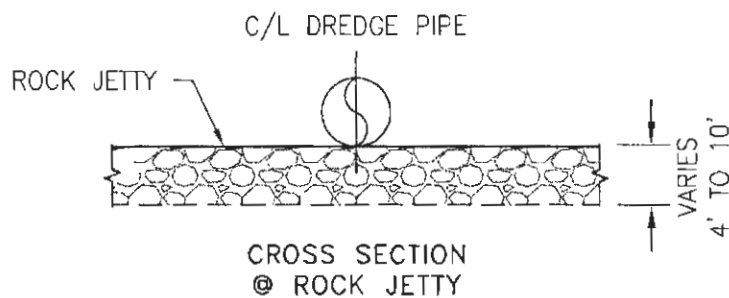
AUG 11 2007

Sabine Pass LNG, L.P. SWG-2004-00465
Sabine Pass and Gulf of Mexico, Cameron Parish,
Louisiana. Sheet 5 of 7.




FLOATING DREDGE LINE

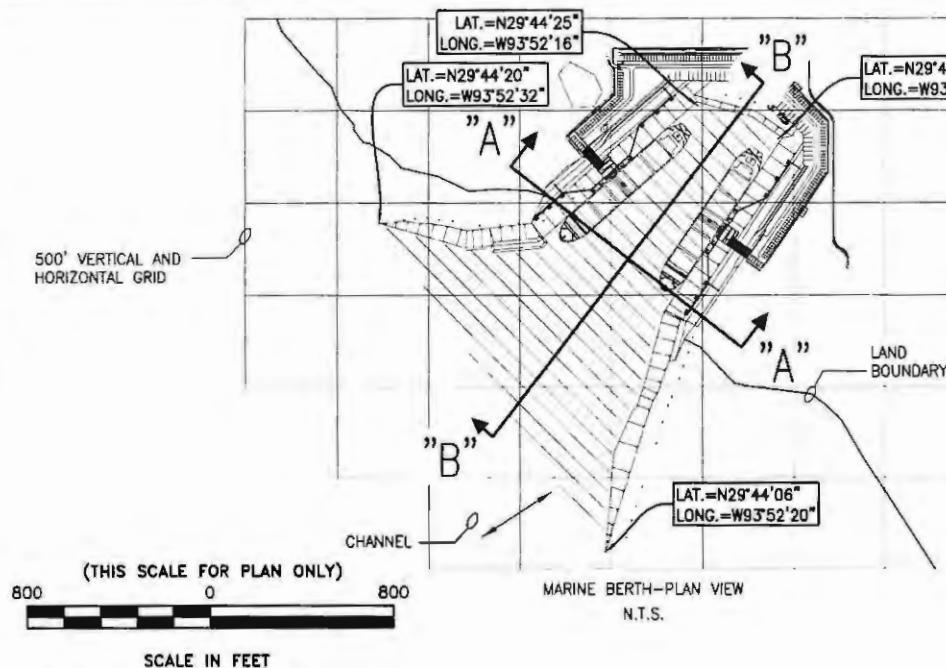
* SEE NOTE 1



* NOTE 1: TYPICAL DREDGE PIPE DIAMETER COULD VARY FROM 8" TO 36". PIPE DIAMETERS WILL VARY DEPENDING ON DREDGE EQUIPMENT AND VOLUME OF MATERIAL.

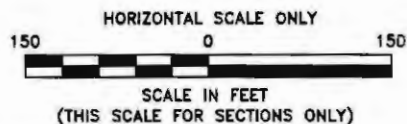
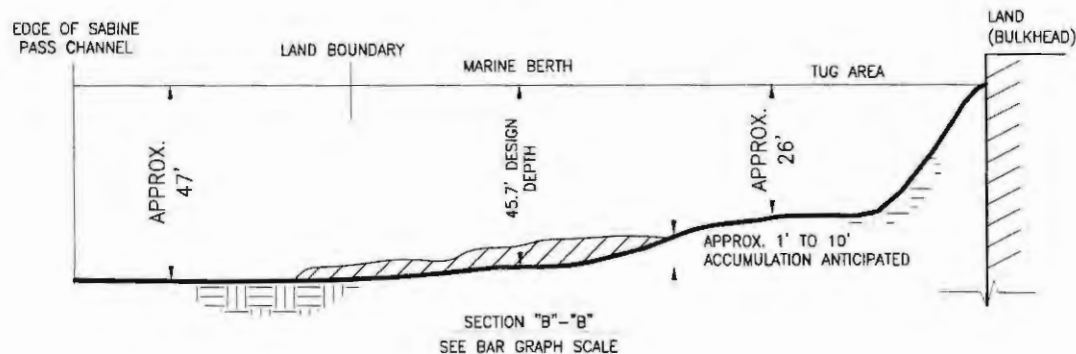
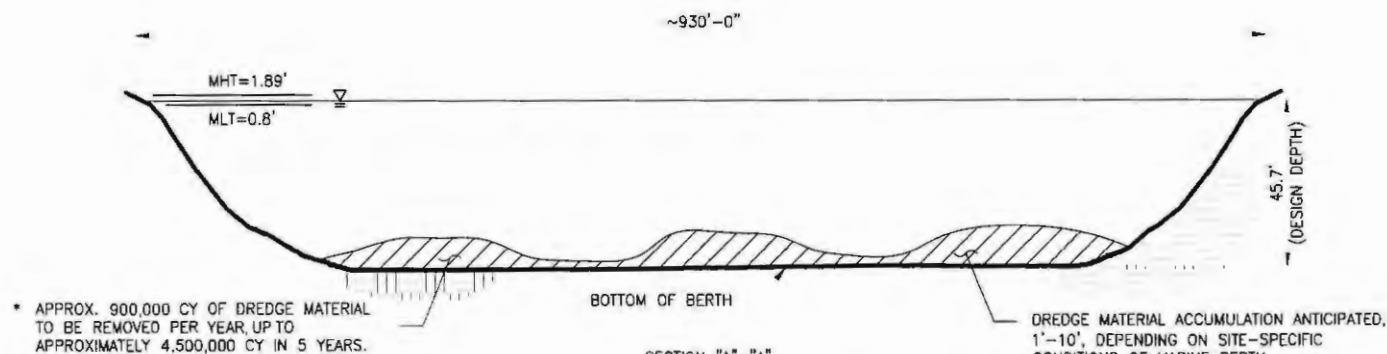
03	4/6/12	ADD SECTION @ ROCK JETTY	DWG	CHK	APP		SABINE PASS LNG, L.P. SPLNG DREDGE MATERIAL MANAGEMENT PLAN DREDGE PIPELINE SECTION		Engineering and Construction Department FIGURE 3		REV. 3		
02	03/26/12	ADD TYP. SECTION	RMB										
			DWG	CHK	APP								
01	09/19/11	ADD FLOATING DREDGE LINE	RMB	KM									
			DWG	CHK	APP								
DRAWN BY RMB		DATE 12/06/07											
CHECKED BY KAB		DATE 12/10/07											
APPROVED BY JM		DATE 12/10/07											
SCALE: SEE BAR GRAPH		DATE											

AUG 11 2017



NOTES

1. ELEVATIONS ARE BASED ON NAVD'88 DATUM. CONVERSION TO COE MEAN LOW TIDE IS 0.0' NAVD'88 = +0.74' MLT.
2. ELEVATIONS AND POSITIONAL DATA WERE DERIVED FROM NGS TIDAL BENCHMARK F 1015, LATITUDE N 29°43'42.82" LONGITUDE W 93°52'22.91" ELEVATION 6.6' - NAVD 88 COORDINATES ARE LOUISIANA STATE PLANE, SOUTH ZONE, NAD 83



Sabine Pass LNG, L.P. SWG-2004-00465
Sabine Pass and Gulf of Mexico, Cameron Parish,
Louisiana. Sheet 6 of 7.

DWG	CHK	APP
DWG	CHK	APP
DWG	CHK	APP

DRAWN BY JLM	DATE 3/27/2012
CHECKED BY MB	DATE 3/27/2012
APPROVED BY CR	DATE 3/27/2012
SCALE: SEE BAR GRAPH	

SABINE PASS LNG, L.P.
SPLNG DREDGE MATERIAL MANAGEMENT PLAN
MARINE BERTH CROSS SECTION

Engineering and
Construction Department

FIGURE 4

REV.
0

