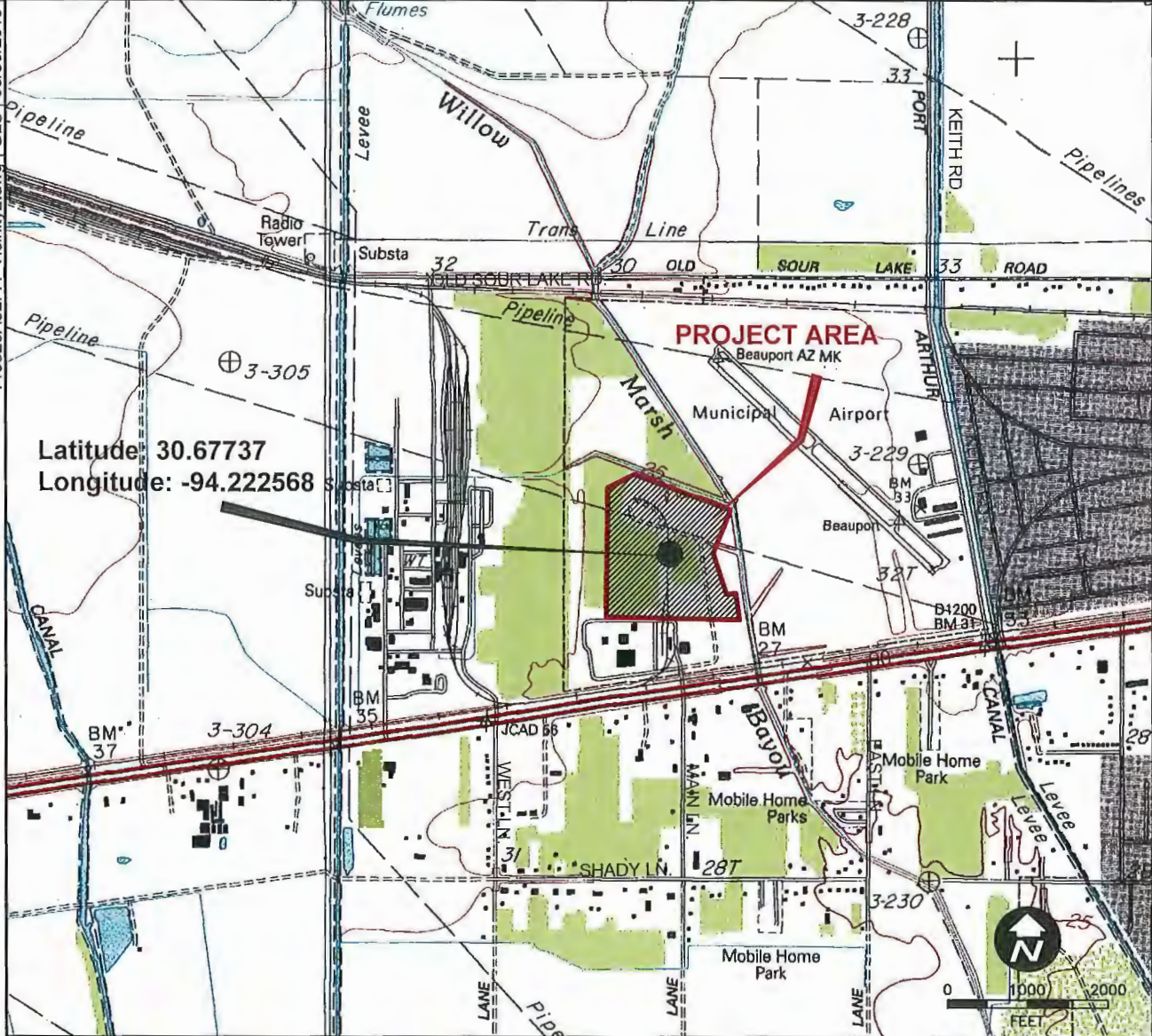
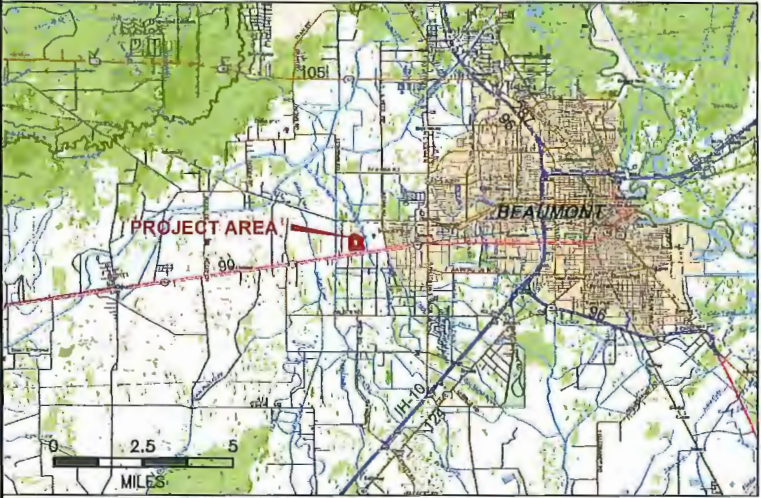


140020A32PA_Vicinity2.dwg | GLS | 03/30/2016



MAP SOURCE: DELORME TOPO USA VER. 8.0 (2009)



MAP SOURCE: DELORME TOPO USA VER. 8.0 (2009)



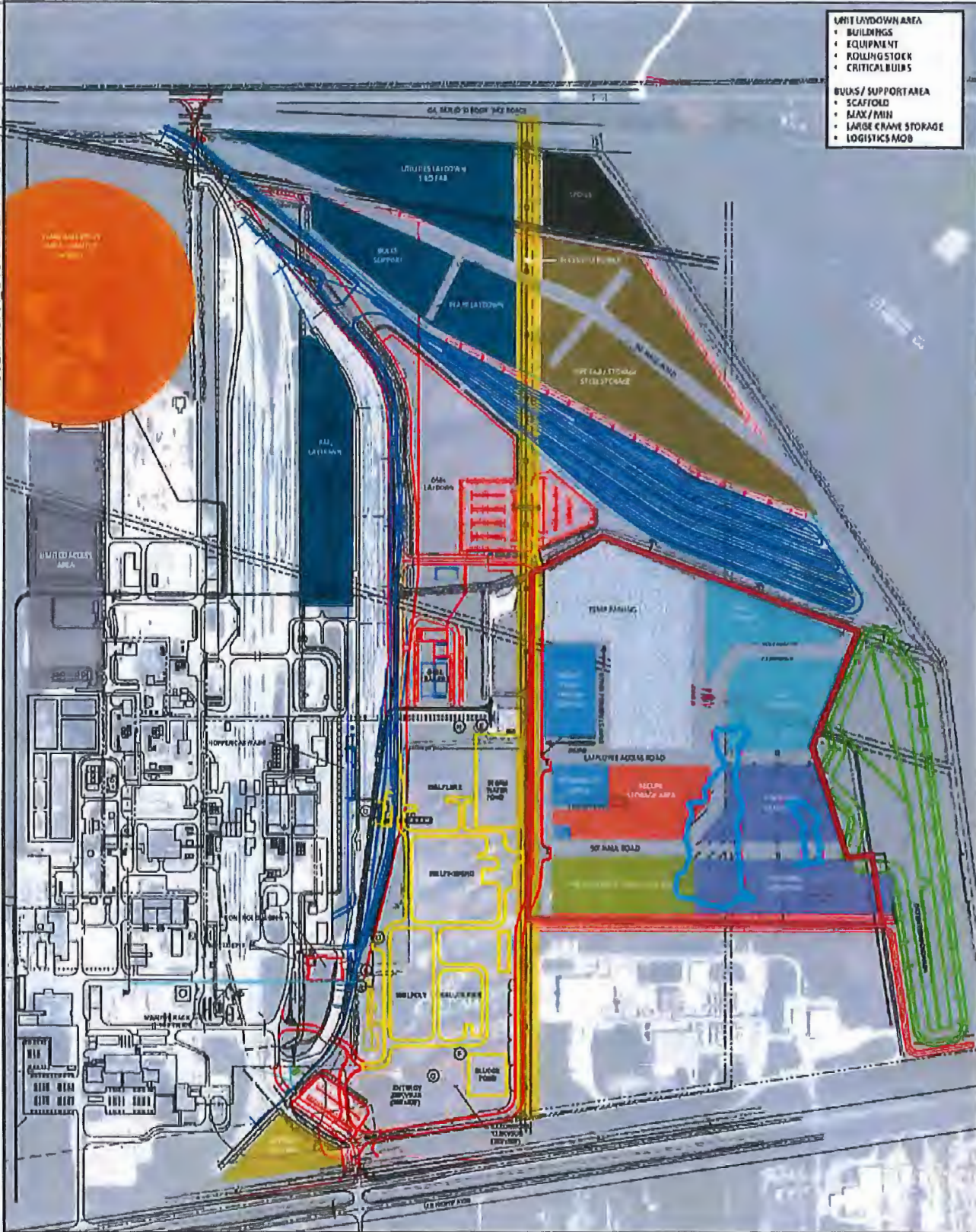
Figure 1
Vicinity Map
Proposed Laydown Areas
ExxonMobil Beaumont Polyethylene Plant
Beaumont, Jefferson County, Texas

Do Not Scale This Drawing

MAY 12 2016

140020A76PA_OverAllPlan4-3-16.dwg | GLS | 04/3/2016

- LAKE LAYDOWN AREA
 - BUILDINGS
 - EQUIPMENT
 - ROLLING STOCK
 - CRITICAL BUILDS
- BULK/SUPPORT AREA
 - SCAFFOLD
 - MAX/MIN
 - LARGE CRANE STORAGE
 - LOGISTICS MOB



Map Source: Client Provided

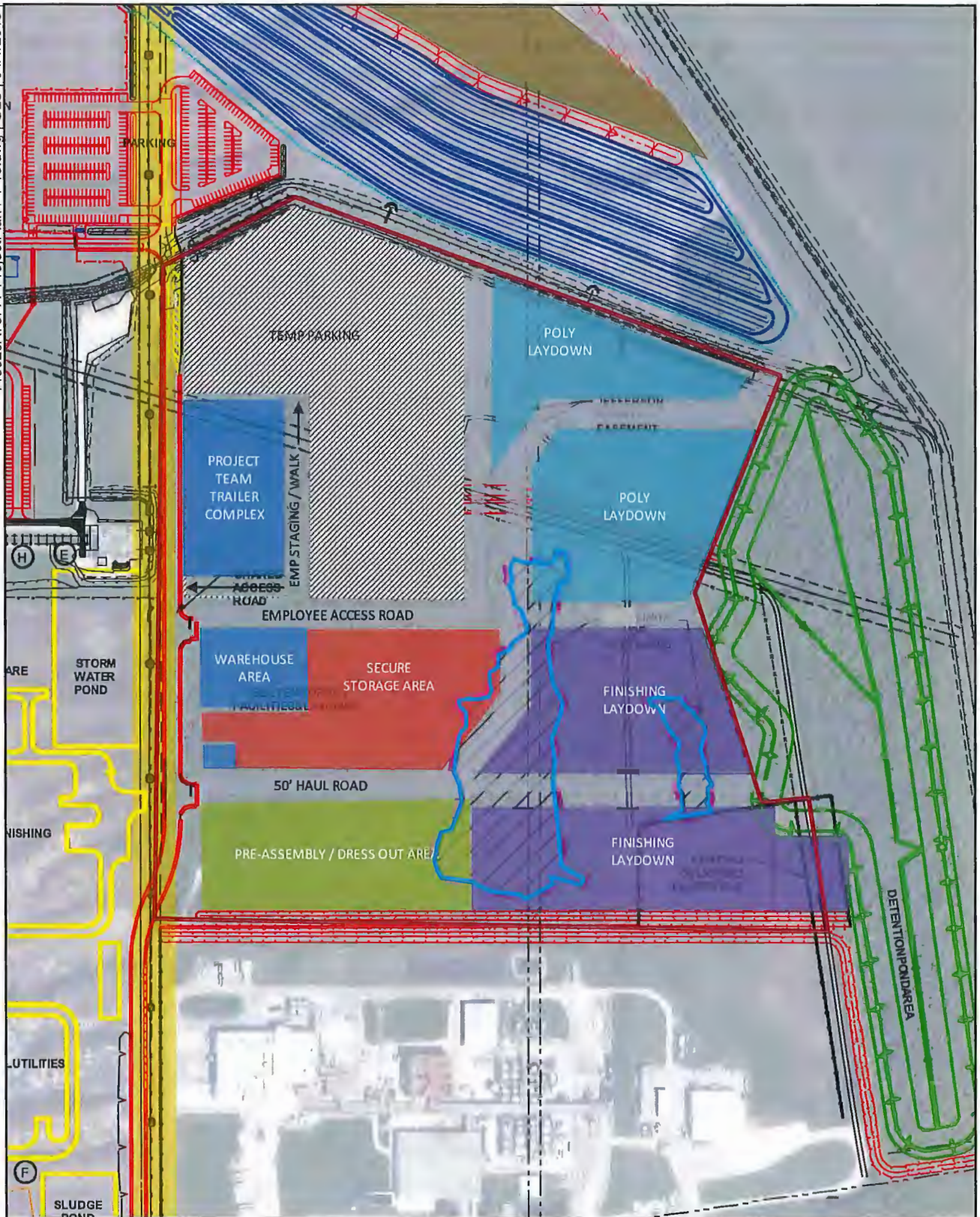
Do Not Scale This Drawing



0 97 184
FEET

Figure 2
Overall Site Plan
Proposed Laydown Areas
ExxonMobil Beaumont Polyethylene Plant
Beaumont, Jefferson County, Texas

140020A75PA ProjectPlan4-1-16.dwg | GLS | 04/1/2016

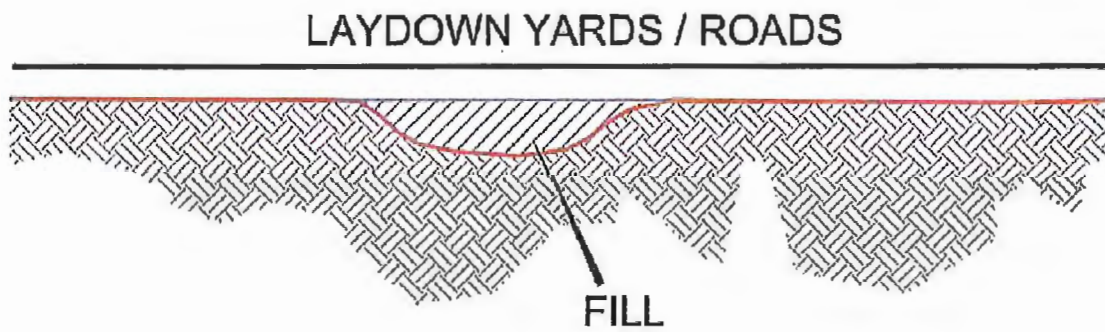


Map Source: Client Provided

Do Not Scale This Drawing



Figure 3
Proposed Plan
Proposed Laydown Areas
ExxonMobil Beaumont Polyethylene Plant
Beaumont, Jefferson County, Texas



NOT TO SCALE



FIGURE 4

Typical Cross Section
Proposed Laydown Areas
ExxonMobil Beaumont Polyethylene Plant
Beaumont, Jefferson County, Texas