

● Project Location

Basemap: National Geographic World Map  
NAD 1983 2011 StatePlane Texas South Central FIPS 4204 FIPS  
Projection: Lambert Conformal Conic  
Datum: NAD 1983 2011  
Units: Foot US

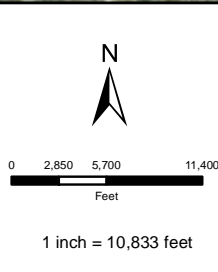
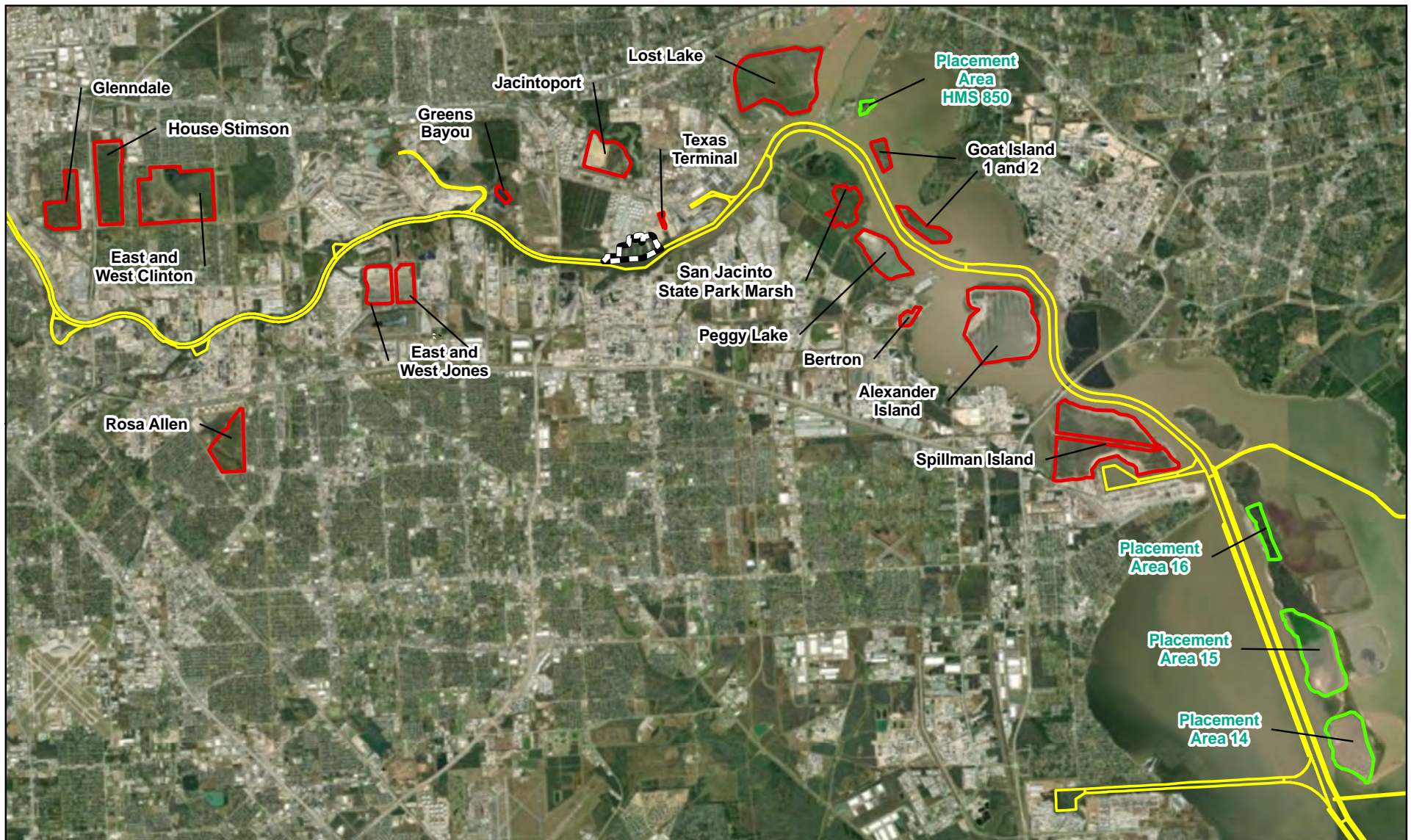




Percheron, LLC  
1904 West Grand Parkway North, Suite 200, Katy, TX, 77449

**Figure 1**  
**Vicinity Map**  
**Enterprise Houston Terminal**  
**SWG-2008-00073**  
**Enterprise Products Operating LLC**  
**Harris County, Texas**


Date Saved: 6/19/2020	Project Num: 10.004771.0004	Revised by: frances.buchanek
-----------------------	-----------------------------	------------------------------



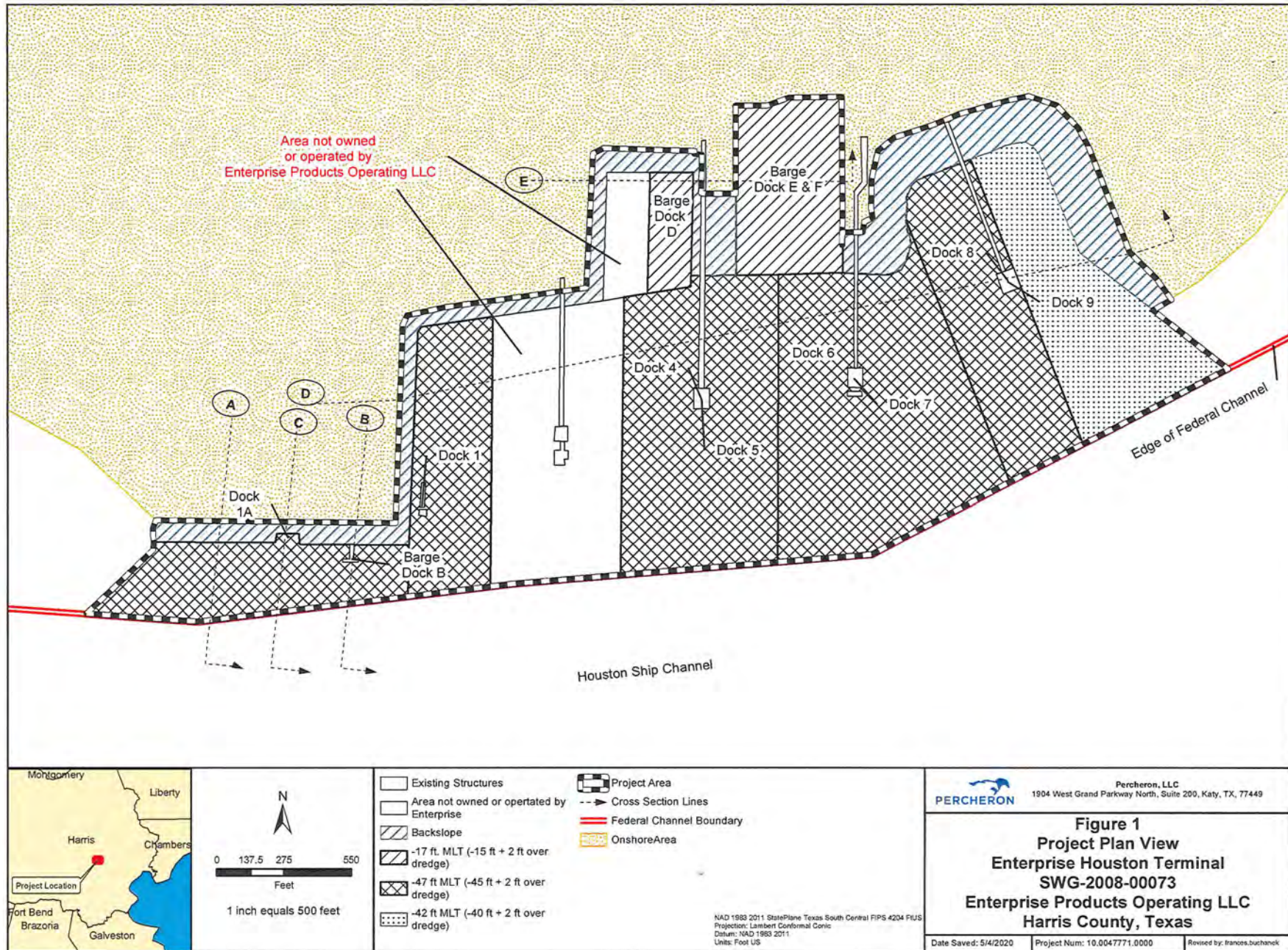


-  ProjectArea
-  Additional DMPAs
-  Currently Authorized DMPAs
-  Ship Channel

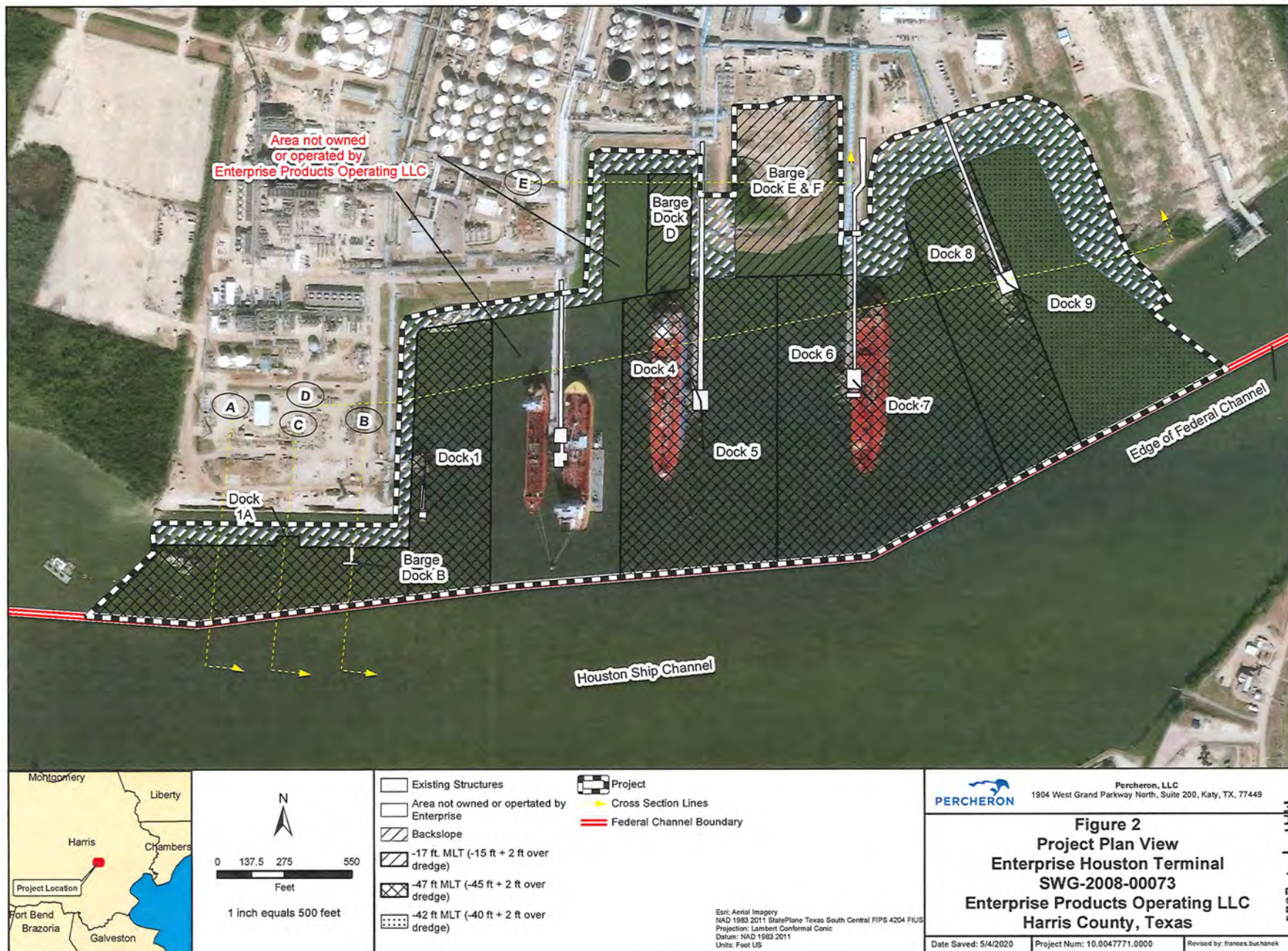
Basemap: ESRI Aerial Map  
NAD 1983 2011 StatePlane Texas South Central FIPS 4204 FIUS  
Projection: Lambert Conformal Conic  
Datum: NAD 1983 2011  
Units: Foot US

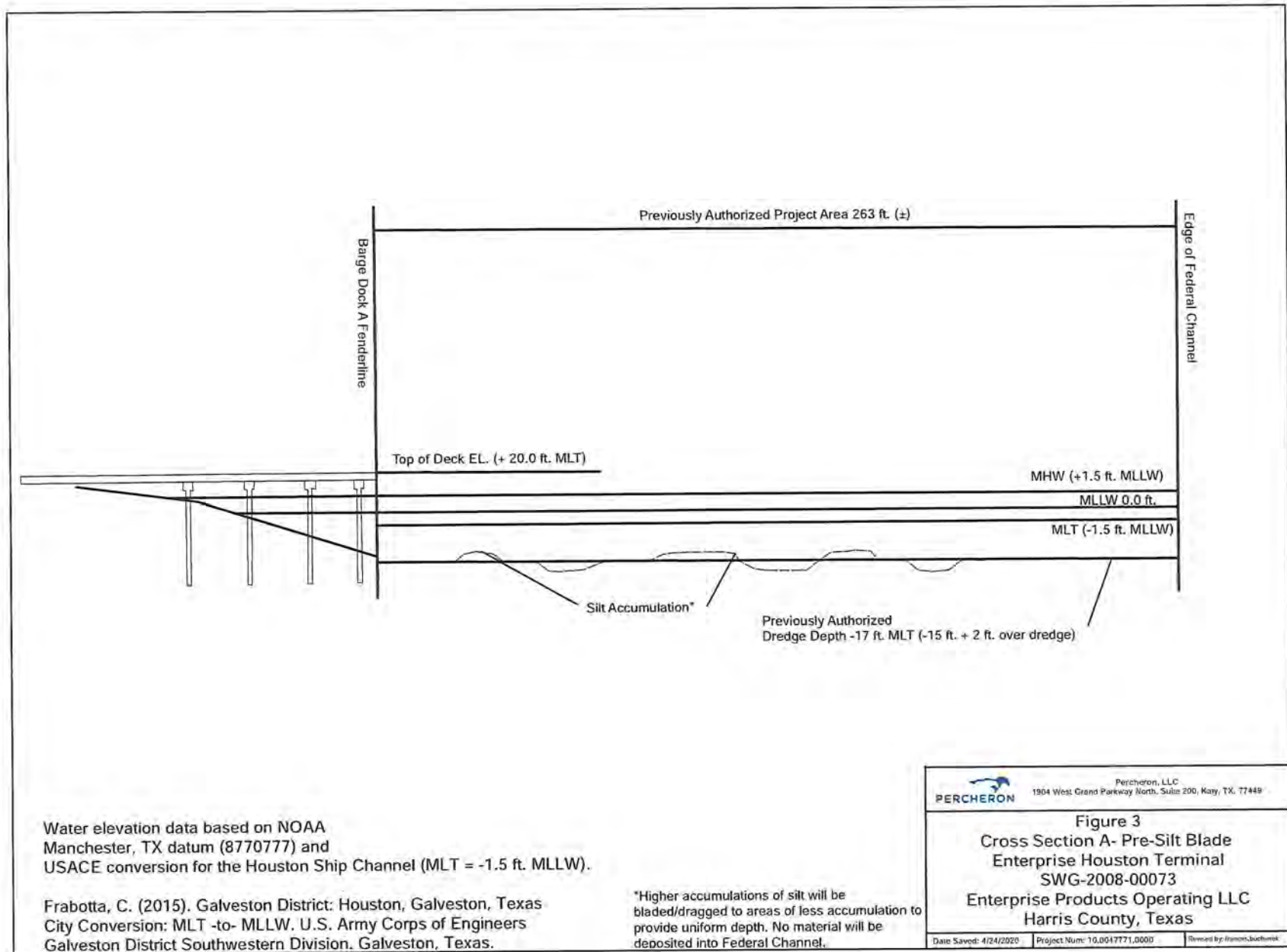
 <b>Percheron, LLC</b> 1904 West Grand Parkway North, Suite 200, Katy, TX, 77449		
<b>Figure 2</b> <b>Project Location Map</b> <b>Enterprise Houston Terminal</b> <b>SWG-2008-00073</b> <b>Enterprise Products Operating LLC</b> <b>Harris County, Texas</b>		
Date Saved: 6/19/2020	Project Num: 10.004771.0004	Revised by: frances.buchanek



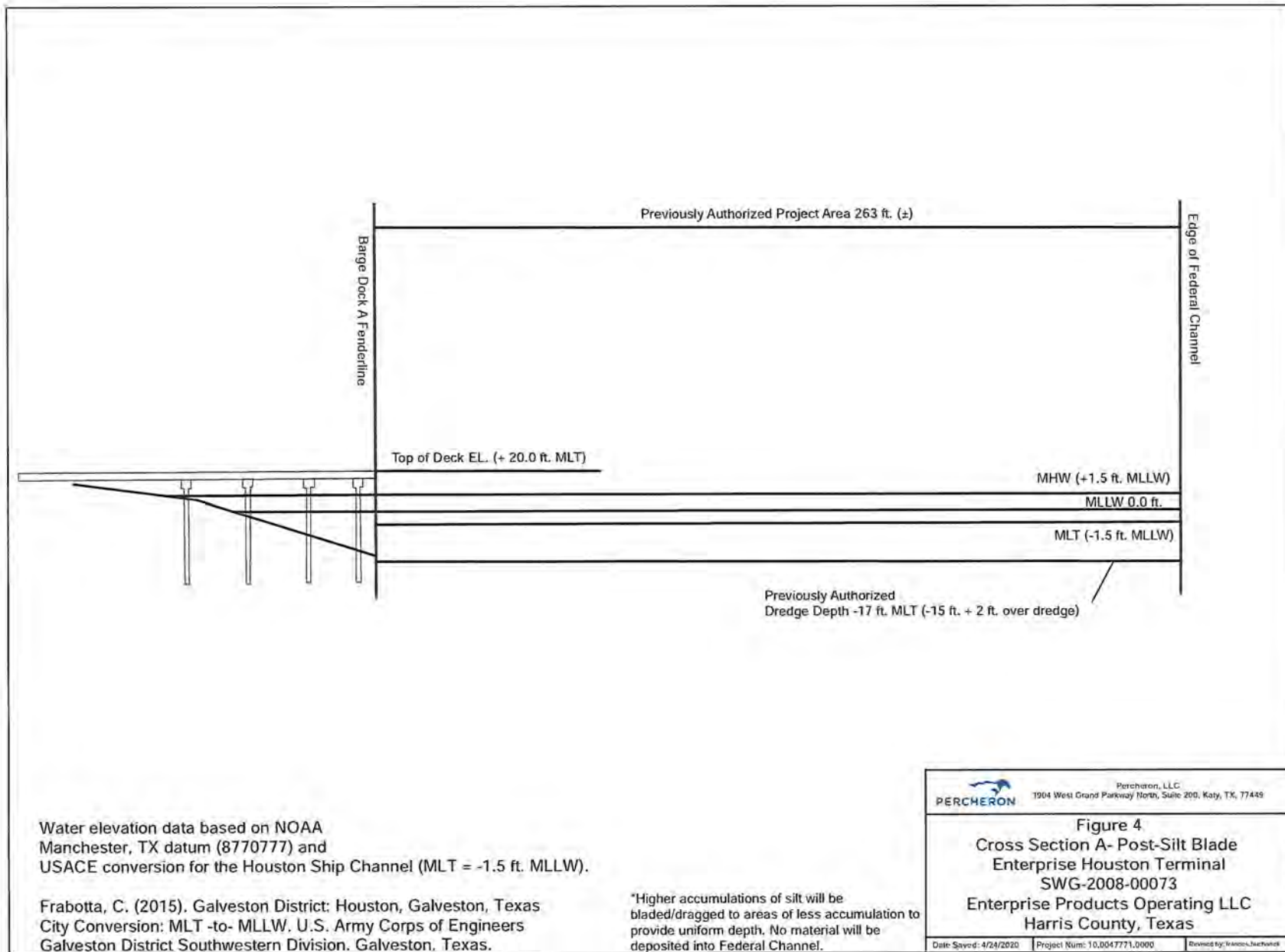




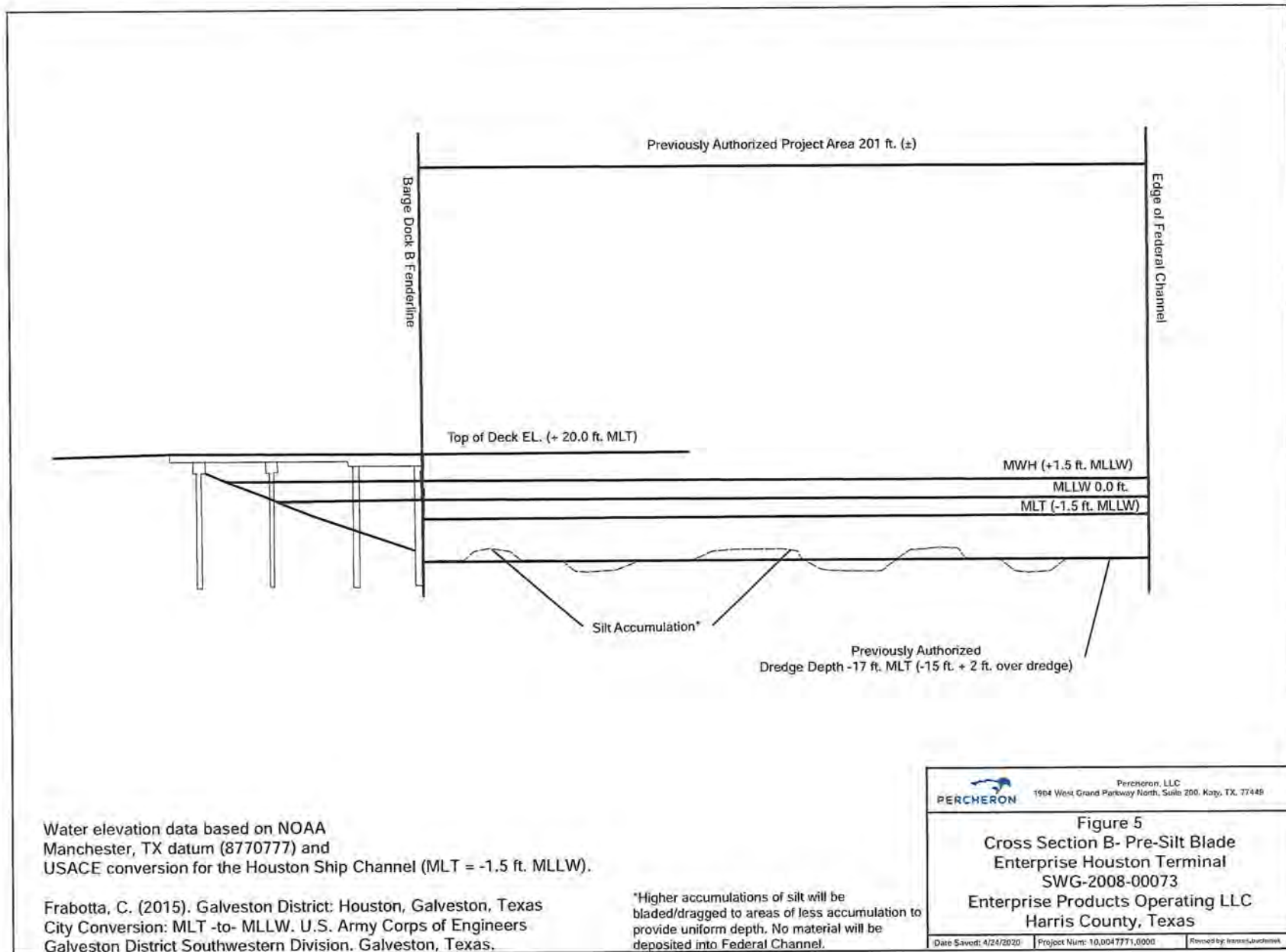




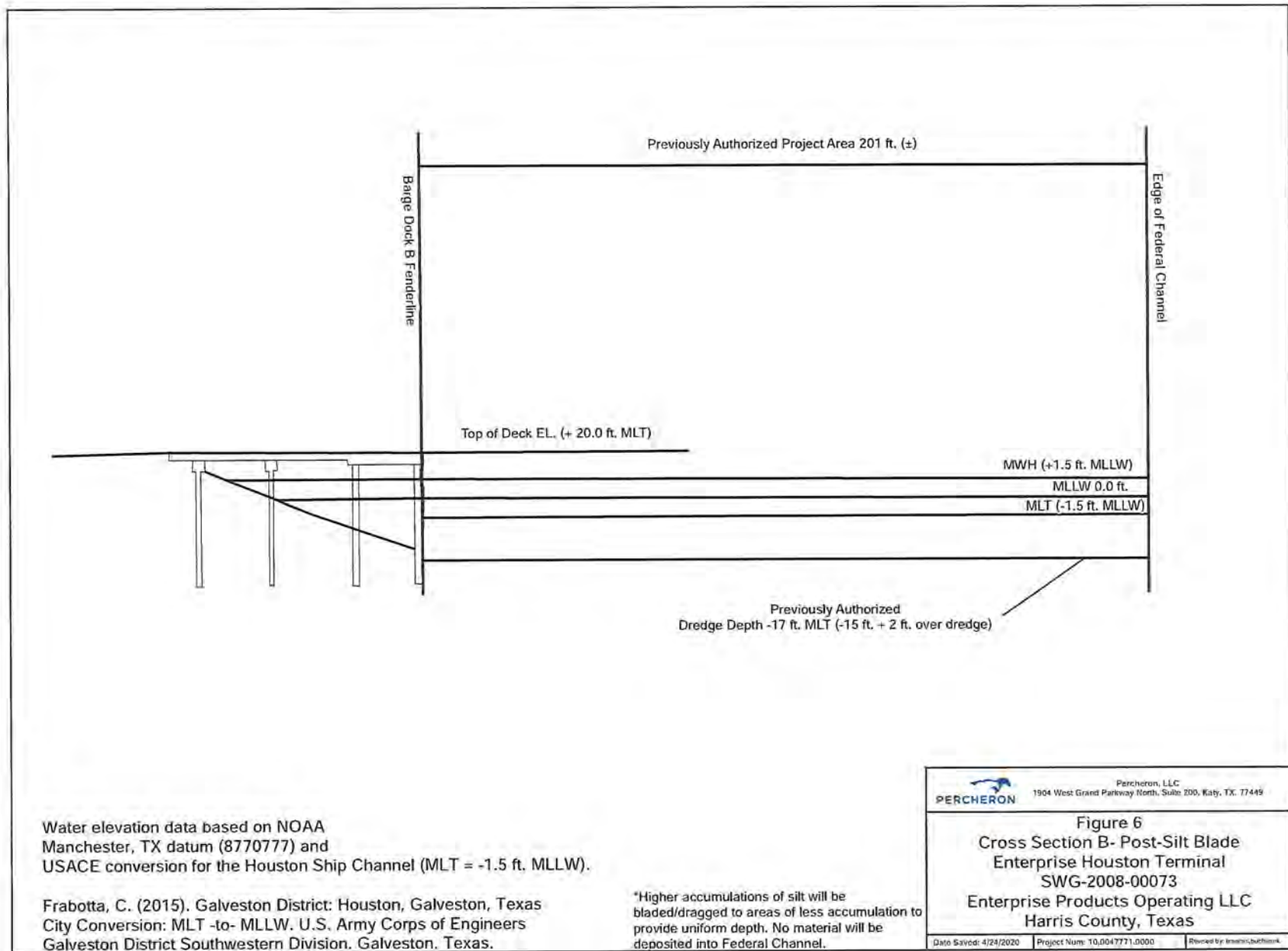




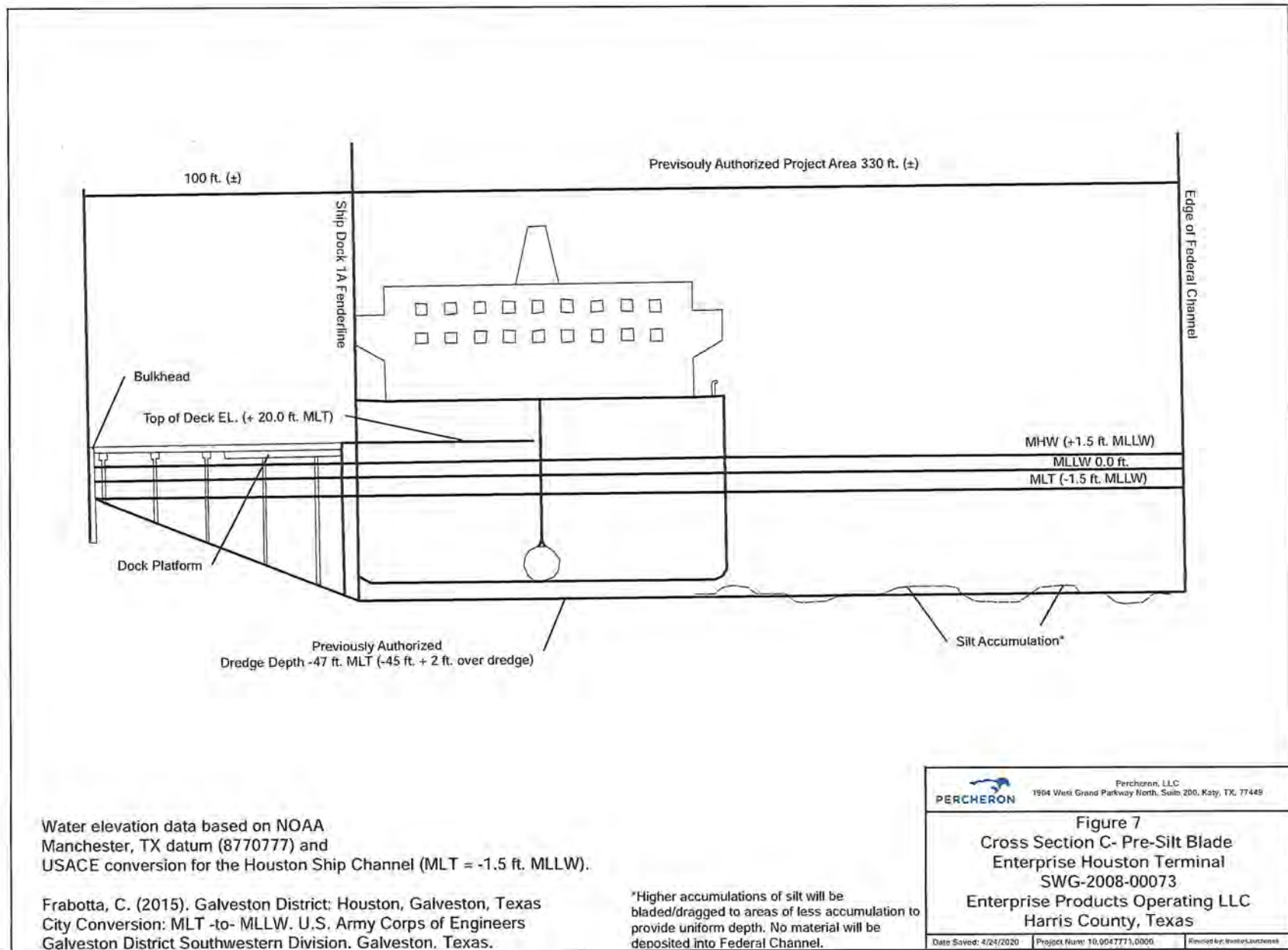
MAY 14 2020

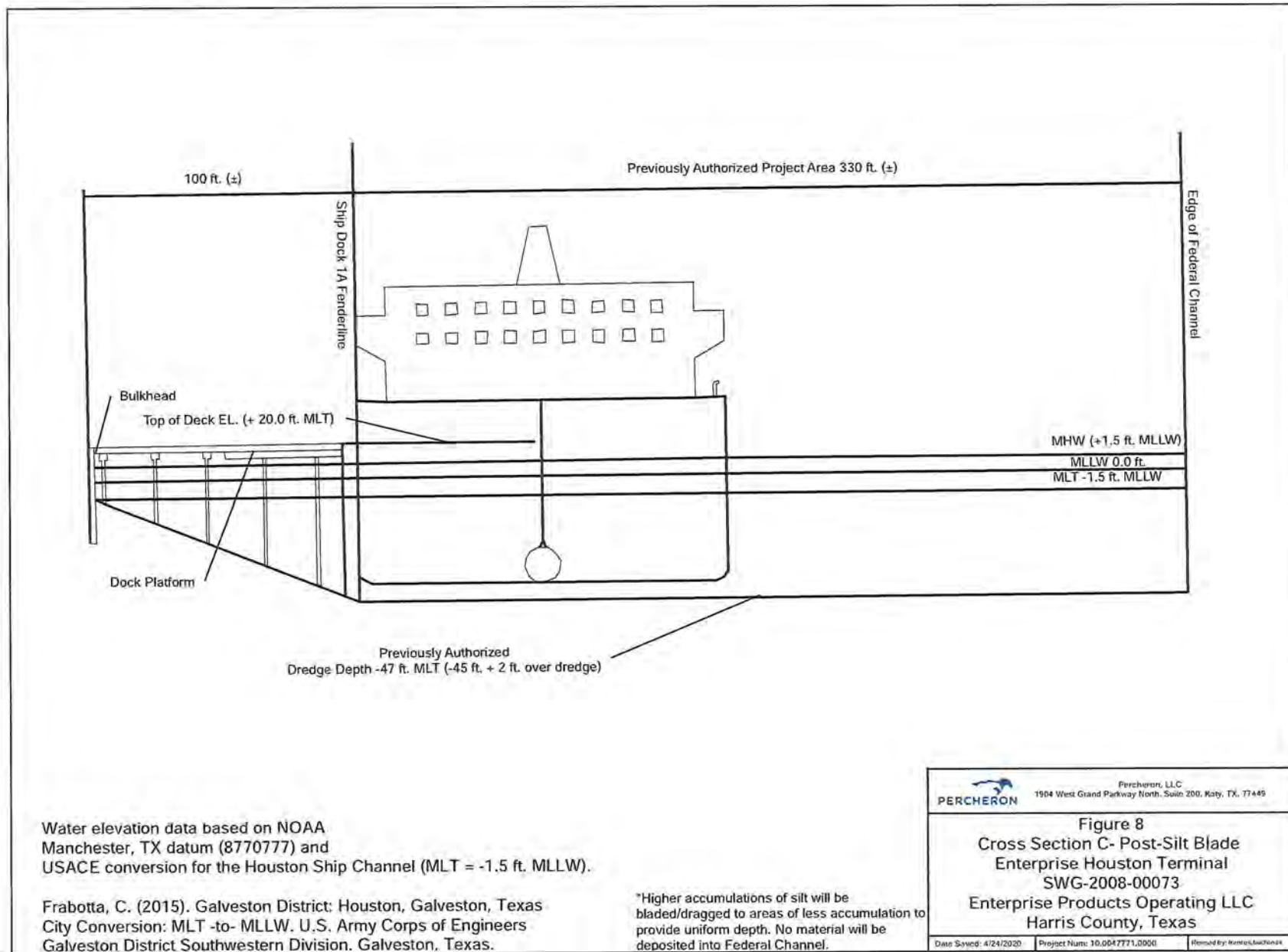


MAY 14 2020

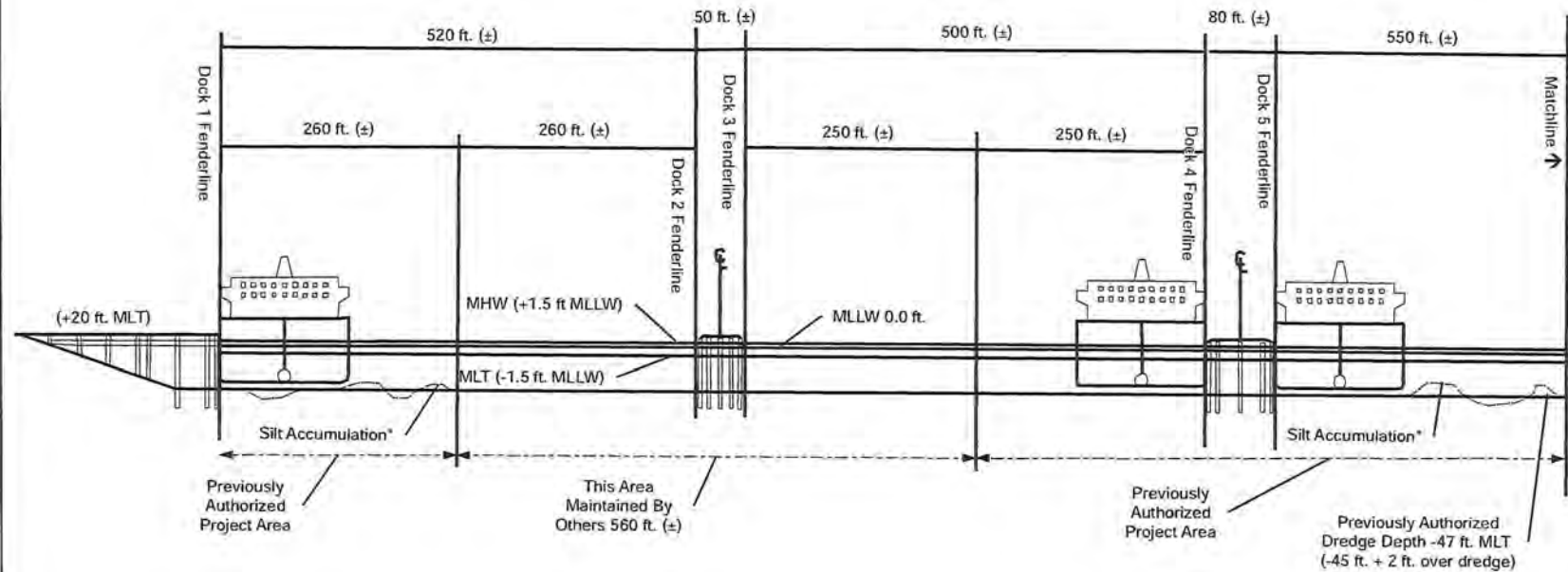













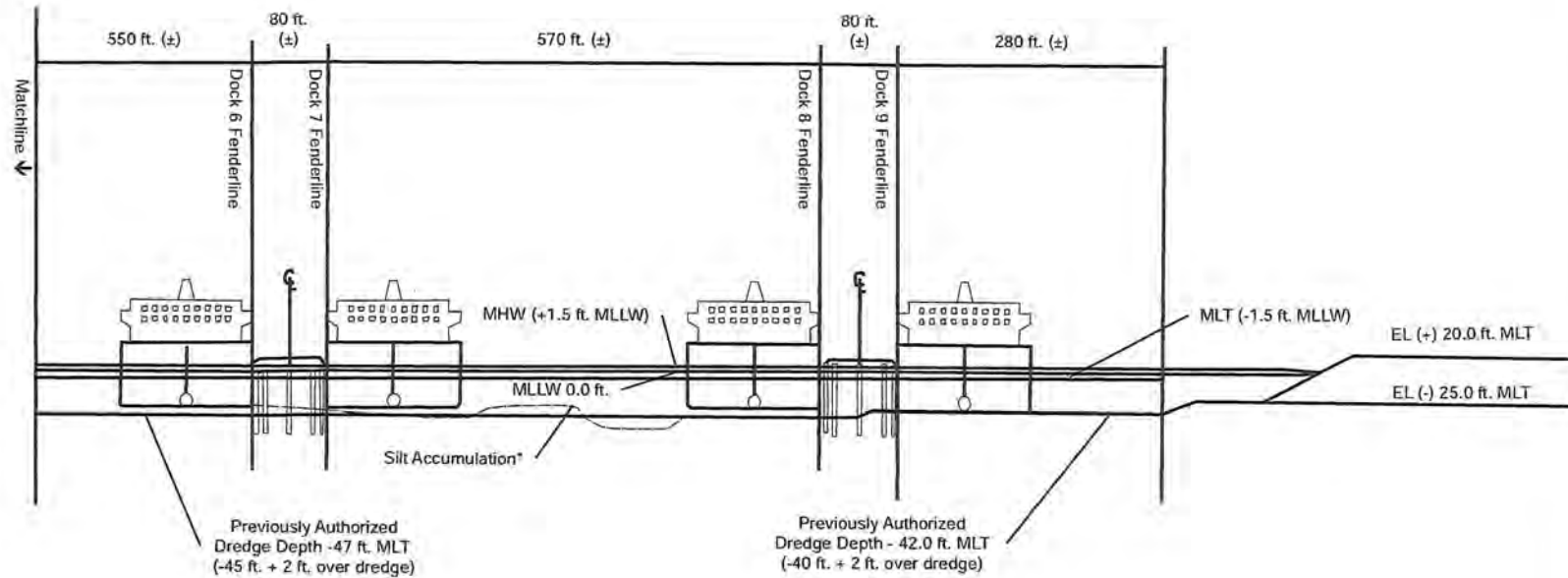
Water elevation data based on NOAA  
Manchester, TX datum (8770777) and  
USACE conversion for the Houston Ship Channel (MLT = -1.5 ft. MLLW).

Frabotta, C. (2015). Galveston District: Houston, Galveston, Texas  
City Conversion: MLT -to- MLLW. U.S. Army Corps of Engineers  
Galveston District Southwestern Division. Galveston, Texas.

\*Higher accumulations of silt will be  
bladed/dragged to areas of less accumulation to  
provide uniform depth. No material will be  
deposited into Federal Channel.

 Percheron, LLC 1904 West Grand Parkway North, Suite 200, Katy, TX, 77449		
<b>Figure 9A</b> Cross Section D- Pre-Silt Blade Enterprise Houston Terminal SWG-2008-00073 Enterprise Products Operating LLC Harris County, Texas		
Date Saved: 4/24/2020	Project Num: 10.0047771.0000	Revised by: mmonahan


MAY 14 2020



Water elevation data based on NOAA  
Manchester, TX datum (8770777) and  
USACE conversion for the Houston Ship Channel (MLT = -1.5 ft. MLLW).

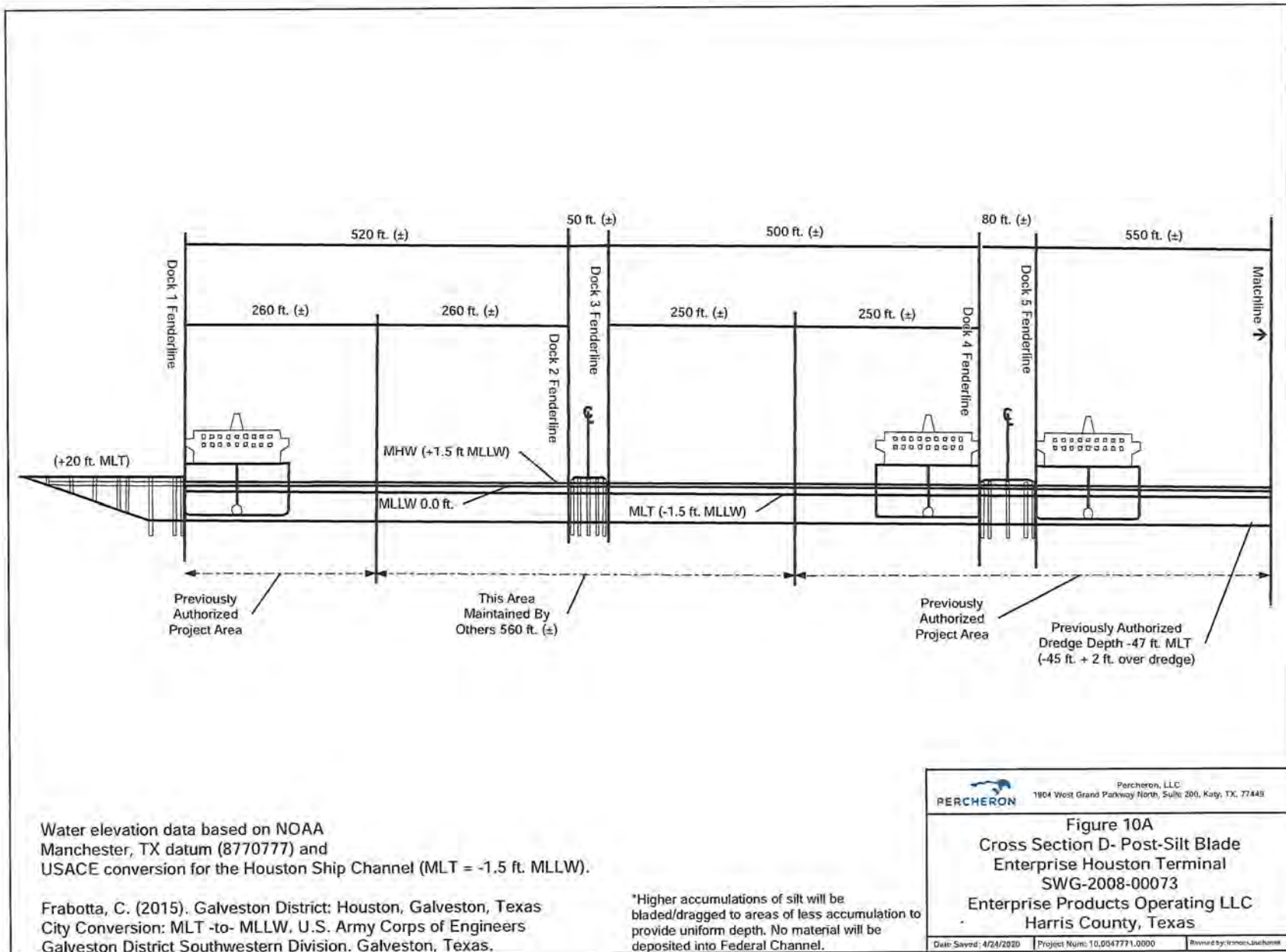
Frabotta, C. (2015). Galveston District: Houston, Galveston, Texas  
City Conversion: MLT -to- MLLW. U.S. Army Corps of Engineers  
Galveston District Southwestern Division. Galveston, Texas.

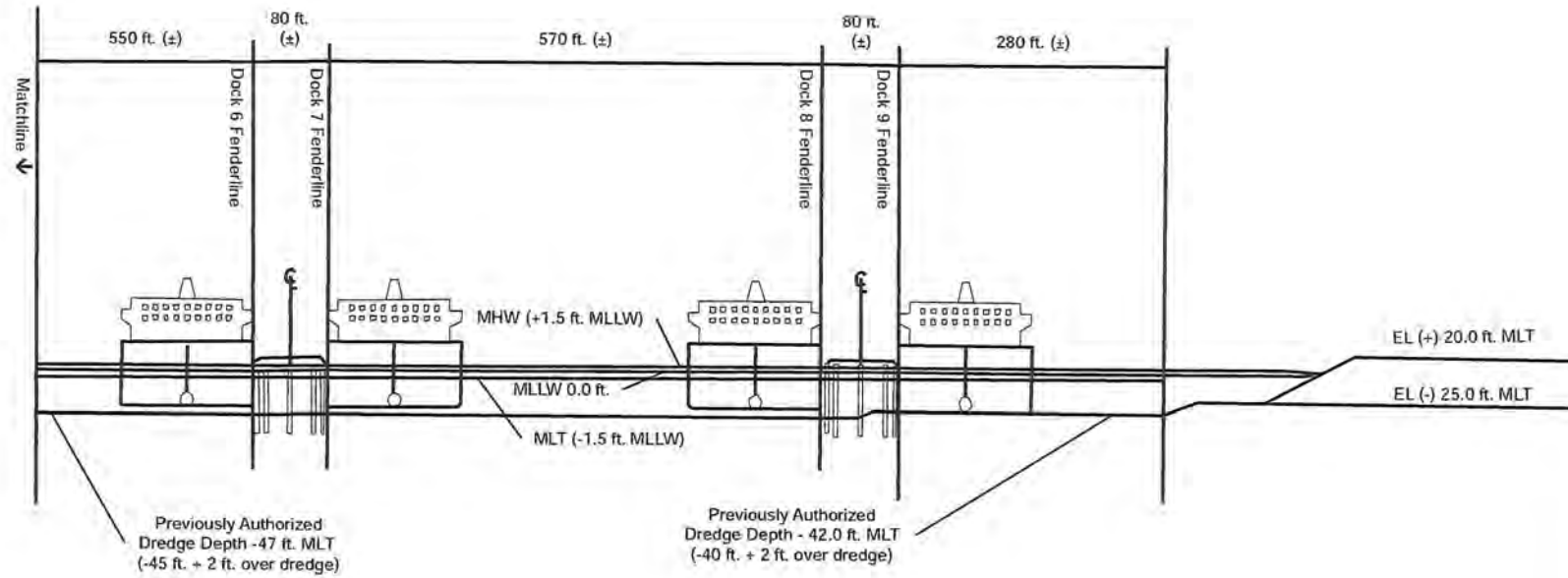
\*Higher accumulations of silt will be  
bladed/dragged to areas of less accumulation to  
provide uniform depth. No material will be  
deposited into Federal Channel.

 Percheron, LLC 1904 West Grand Parkway North, Suite 200, Katy, TX 77449		
<b>Figure 9B</b> Cross Section D- Pre-Silt Blade Enterprise Houston Terminal SWG-2008-00073 Enterprise Products Operating LLC Harris County, Texas		
Date Saved: 4/24/2020	Project Num: 10,0047771,0000	Revised by: kishore.berhane

MAY 14 2020








Water elevation data based on NOAA  
Manchester, TX datum (8770777) and  
USACE conversion for the Houston Ship Channel (MLT = -1.5 ft. MLLW).

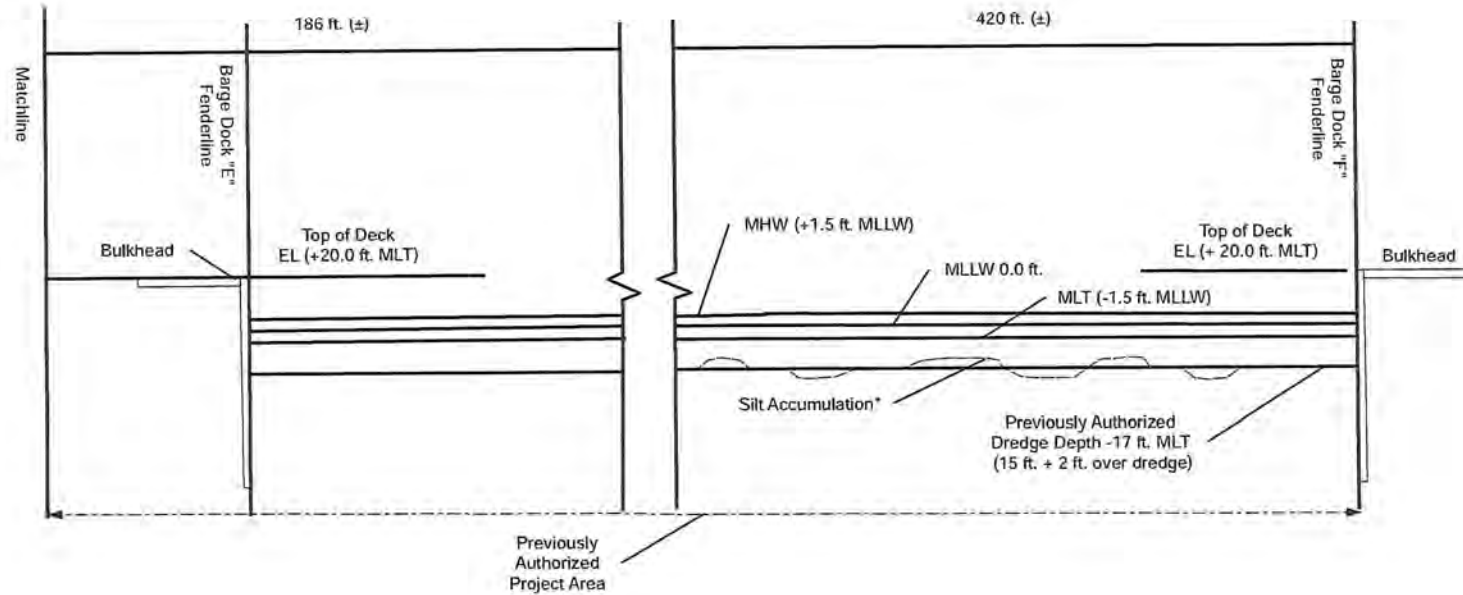
Frabotta, C. (2015). Galveston District: Houston, Galveston, Texas  
City Conversion: MLT -to- MLLW. U.S. Army Corps of Engineers  
Galveston District Southwestern Division. Galveston, Texas.

\*Higher accumulations of silt will be  
bladed/dragged to areas of less accumulation to  
provide uniform depth. No material will be  
deposited into Federal Channel.

 Percheron, LLC 1904 West Grand Parkway North, Suite 200, Katy, TX, 77449		
<b>Figure 10B</b> Cross Section D- Post-Silt Blade Enterprise Houston Terminal SWG-2008-00073 Enterprise Products Operating LLC Harris County, Texas		
Date Saved: 4/24/2020	Project Num: 10.D047771.0000	Revised by: hrcs, bclm

MAY 14 2020




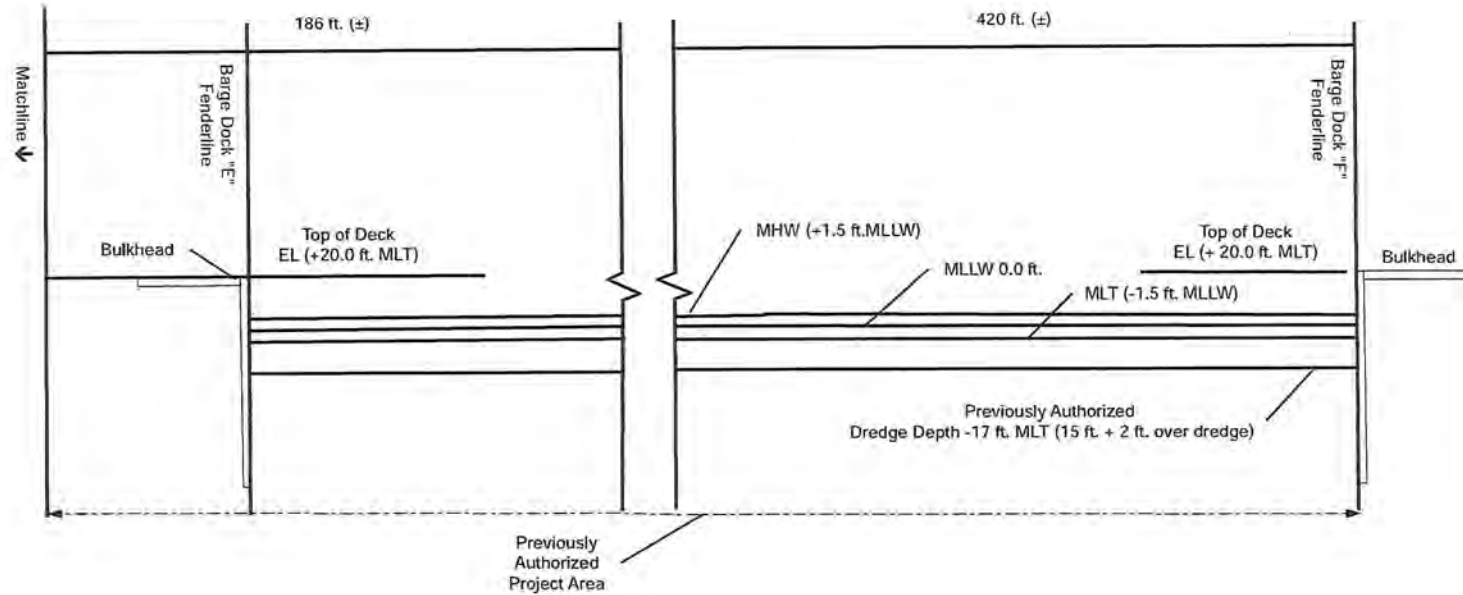


Water elevation data based on NOAA  
Manchester, TX datum (8770777) and  
USACE conversion for the Houston Ship Channel (MLT = -1.5 ft. MLLW).

Frabotta, C. (2015). Galveston District: Houston, Galveston, Texas  
City Conversion: MLT -to- MLLW. U.S. Army Corps of Engineers  
Galveston District Southwestern Division. Galveston, Texas.

\*Higher accumulations of silt will be  
bladed/dragged to areas of less accumulation to  
provide uniform depth. No material will be  
deposited into Federal Channel.


 Percheron, LLC 1904 West Grand Parkway North, Suite 200, Katy, TX. 77449		
<b>Figure 11A</b> Cross Section E- Pre-Silt Blade Enterprise Houston Terminal SWG-2008-00073 Enterprise Products Operating LLC Harris County, Texas		
Date Saved: 4/24/2020	Project Num: 10.0047771.0000	Revised by: hanson.buchheit



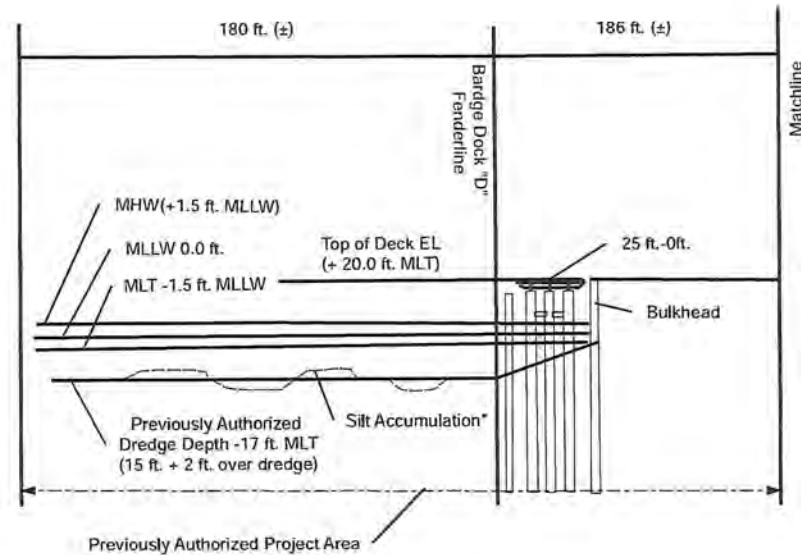
Water elevation data based on NOAA  
Manchester, TX datum (8770777) and  
USACE conversion for the Houston Ship Channel (MLT = -1.5 ft. MLLW).

Frabotta, C. (2015). Galveston District: Houston, Galveston, Texas  
City Conversion: MLT -to- MLLW. U.S. Army Corps of Engineers  
Galveston District Southwestern Division. Galveston, Texas.

\*Higher accumulations of silt will be  
bladed/dragged to areas of less accumulation to  
provide uniform depth. No material will be  
deposited into Federal Channel.

 Percheron, LLC 1904 West Grand Parkway North, Suite 200, Katy, TX, 77449		
<b>Figure 11B</b> Cross Section E- Post-Silt Blade Enterprise Houston Terminal SWG-2008-00073 Enterprise Products Operating LLC Harris County, Texas		
Date Saved: 4/24/2020	Project Num: 10,0047771,0000	Revised by: Paver, Luthar






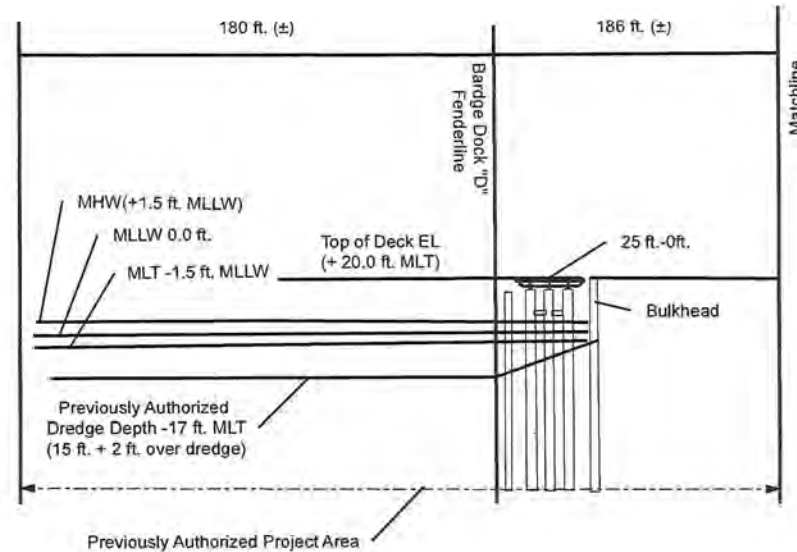
Water elevation data based on NOAA  
Manchester, TX datum (8770777) and  
USACE conversion for the Houston Ship Channel (MLT = -1.5 ft. MLLW).

Frabotta, C. (2015). Galveston District: Houston, Galveston, Texas  
City Conversion: MLT -to- MLLW. U.S. Army Corps of Engineers  
Galveston District Southwestern Division. Galveston, Texas.

\*Higher accumulations of silt will be  
bladed/dragged to areas of less accumulation to  
provide uniform depth. No material will be  
deposited into Federal Channel.

 Percheron, LLC 1904 West Grand Parkway North, Suite 200, Katy, TX, 77449		
<b>Figure 12A</b> Cross Section E- Pre-Silt Blade Enterprise Houston Terminal SWG-2008-00073 Enterprise Products Operating LLC Harris County, Texas		
Date Saved: 4/24/2020	Project Num: 10.0047771.0000	Drawn By: rances.buchanan

MAY 14 2020



Water elevation data based on NOAA  
Manchester, TX datum (8770777) and  
USACE conversion for the Houston Ship Channel (MLT = -1.5 ft. MLLW).

Frabotta, C. (2015). Galveston District: Houston, Galveston, Texas  
City Conversion: MLT -to- MLLW. U.S. Army Corps of Engineers  
Galveston District Southwestern Division. Galveston, Texas.

\*Higher accumulations of silt will be  
bladed/dragged to areas of less accumulation to  
provide uniform depth. No material will be  
deposited into Federal Channel.

 Percheron, LLC 1904 West Grand Parkway North, Suite 206, Katy, TX 77449		
<b>Figure 12B</b> <b>Cross Section E- Post-Silt Blade</b> <b>Enterprise Houston Terminal</b> <b>SWG-2008-00073</b> <b>Enterprise Products Operating LLC</b> <b>Harris County, Texas</b>		
Date Saved: 5/12/2020	Project Num: 10,0047771,0000	Revised by: frames,authenx

MAY 14 2020