

- 6" Pipeline - Decommissioned In Place
- 6" Pipeline - Removed with in Aransas Fairway

McMoRan Oil and Gas, LLC

6" Pipeline Decommissioning
Mustang Island
Blocks 757, 758, 763, 764, 782



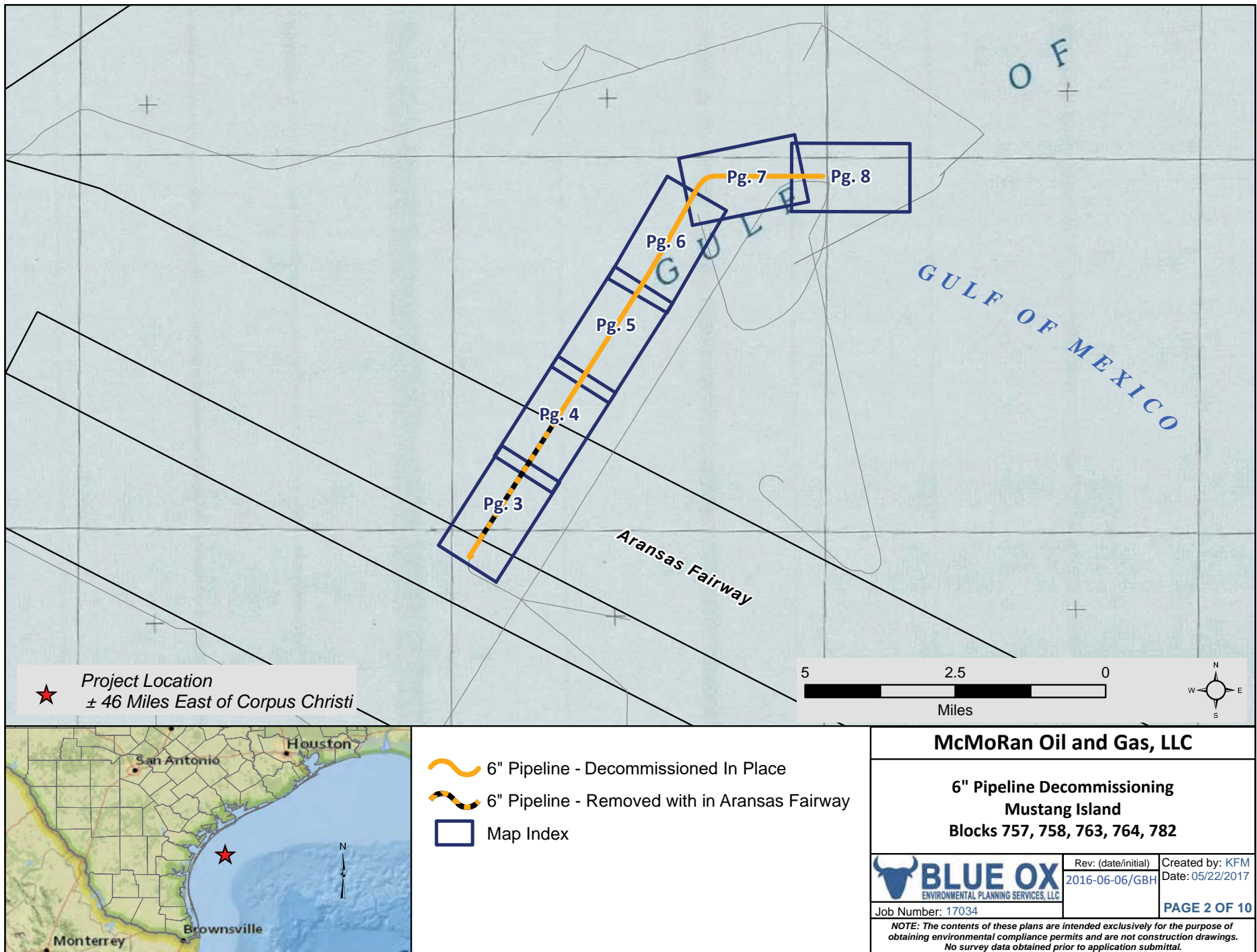
Job Number: 17034

Rev: (date/initial)
2016-06-06/GBH

Created by: KFM
Date: 05/22/2017

PAGE 1 OF 10

NOTE: The contents of these plans are intended exclusively for the purpose of obtaining environmental compliance permits and are not construction drawings. No survey data obtained prior to application submittal.



- 6" Pipeline - Decommissioned In Place
- 6" Pipeline - Removed with in Aransas Fairway
- Map Index

McMoRan Oil and Gas, LLC

**6" Pipeline Decommissioning
Mustang Island
Blocks 757, 758, 763, 764, 782**



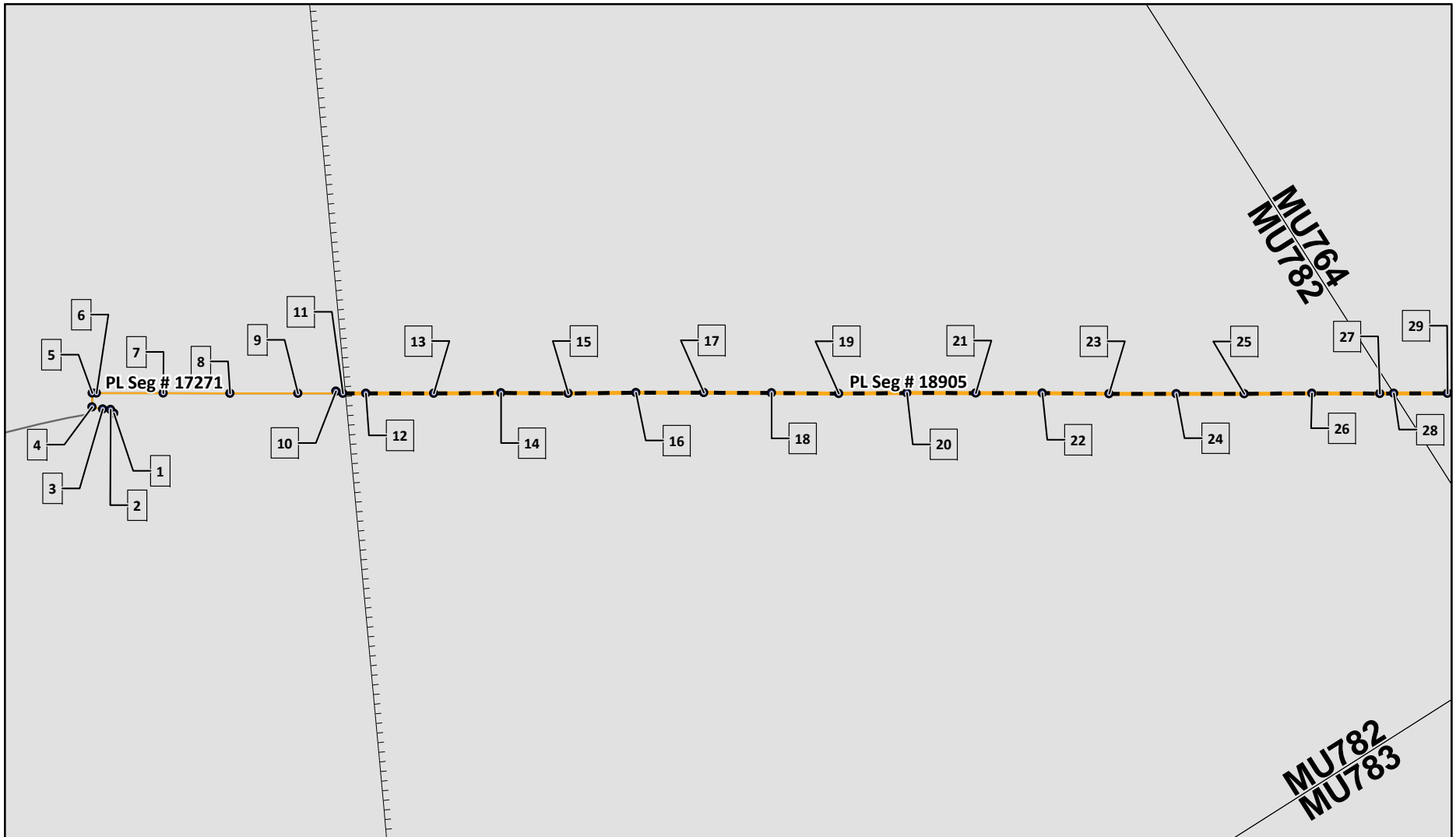
Rev: (date/initial)
2016-06-06/GBH

Created by: KFM
Date: 05/22/2017

Job Number: 17034

PAGE 2 OF 10

NOTE: The contents of these plans are intended exclusively for the purpose of obtaining environmental compliance permits and are not construction drawings. No survey data obtained prior to application submittal.



1,000 500 0 1,000
Feet



6" Pipeline - Decommissioned in Place
 6" Pipeline - Removed within Fairway

PL Seg # 17271 - $\pm 2,023'$ Decommissioned in Place
 PL Seg # 18906 - $\pm 35,320'$ Decommissioned in Place
 PL Seg # 18905 - $\pm 12,211'$ Removed within Fairway

McMoRan Oil and Gas, LLC

6" Pipeline Decommissioning
 Mustang Island
 Blocks 757, 758, 763, 764, 782



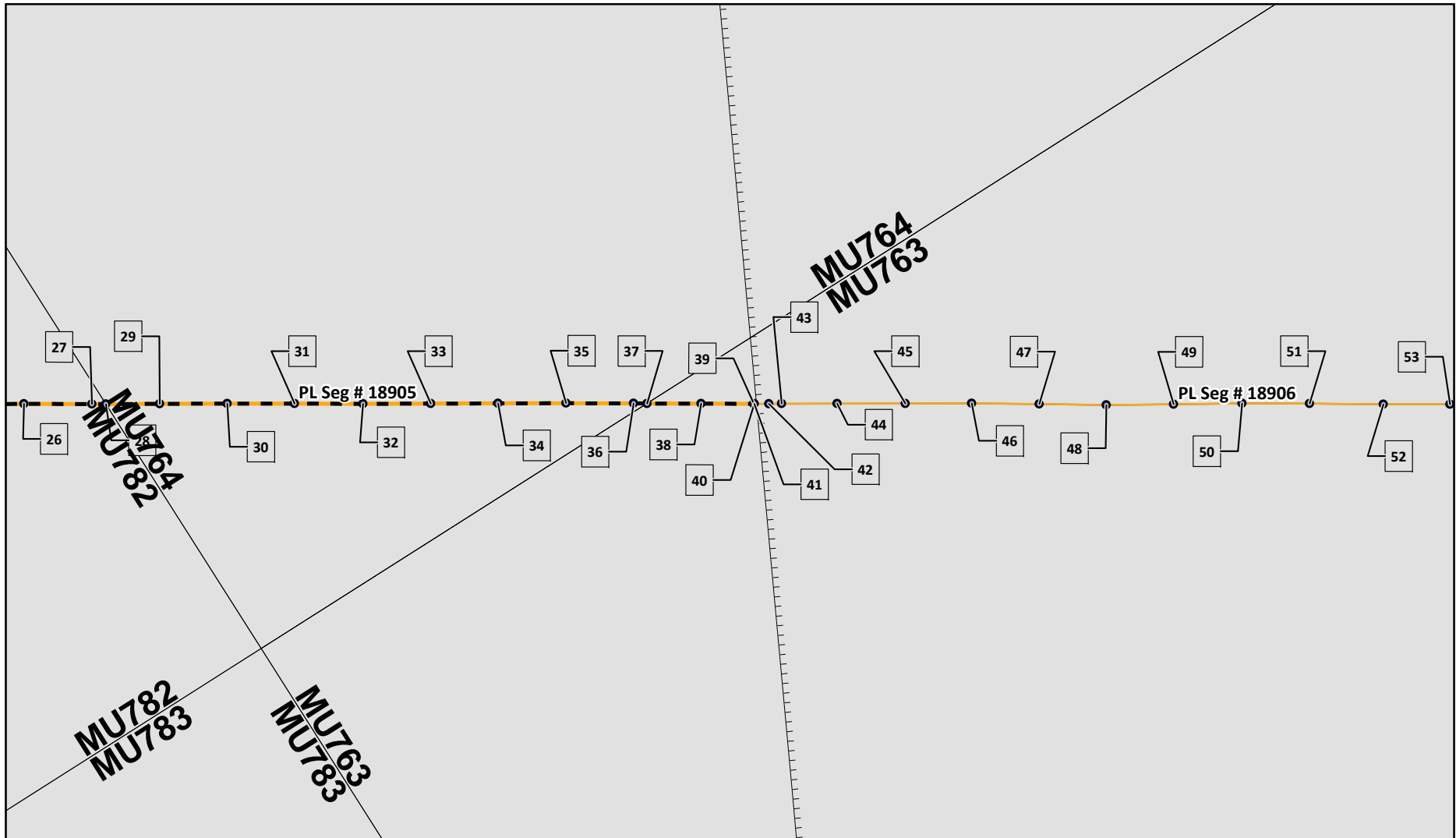
Job Number: 17034

Rev: (date/initial)
 2016-06-06/GBH

Created by: KFM
 Date: 05/22/2017

PAGE 3 OF 10

NOTE: The contents of these plans are intended exclusively for the purpose of
 obtaining environmental compliance permits and are not construction drawings.
 No survey data obtained prior to application submittal.



1,000 500 0 1,000
Feet



- 6" Pipeline - Decommissioned in Place
 6" Pipeline - Removed within Fairway
- PL Seg # 17271 - $\pm 2,023'$ Decommissioned in Place
 PL Seg # 18906 - $\pm 35,320'$ Decommissioned in Place
 PL Seg # 18905 - $\pm 12,211'$ Removed within Fairway

McMoRan Oil and Gas, LLC

6" Pipeline Decommissioning
Mustang Island
Blocks 757, 758, 763, 764, 782



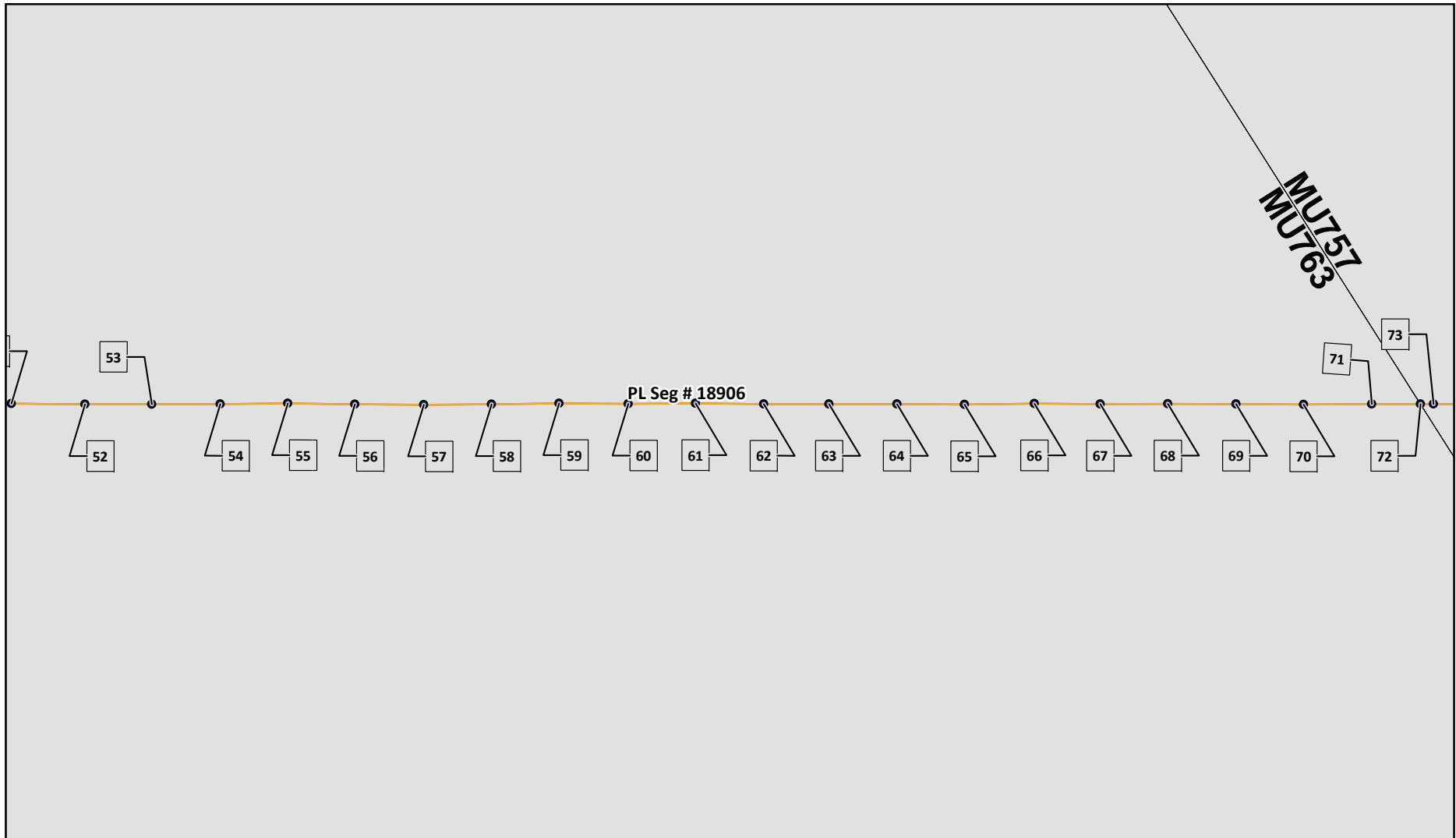
Rev: (date/initial)
2016-06-06/GBH

Created by: KFM
Date: 05/22/2017

Job Number: 17034

PAGE 4 OF 10

NOTE: The contents of these plans are intended exclusively for the purpose of obtaining environmental compliance permits and are not construction drawings. No survey data obtained prior to application submittal.



- 6" Pipeline - Decommissioned in Place *PL Seg # 17271 - ±2,023' Decommissioned in Place*
PL Seg # 18906 - ±35,320' Decommissioned in Place
 6" Pipeline - Removed within Fairway *PL Seg # 18905 - ± 12,211' Removed within Fairway*

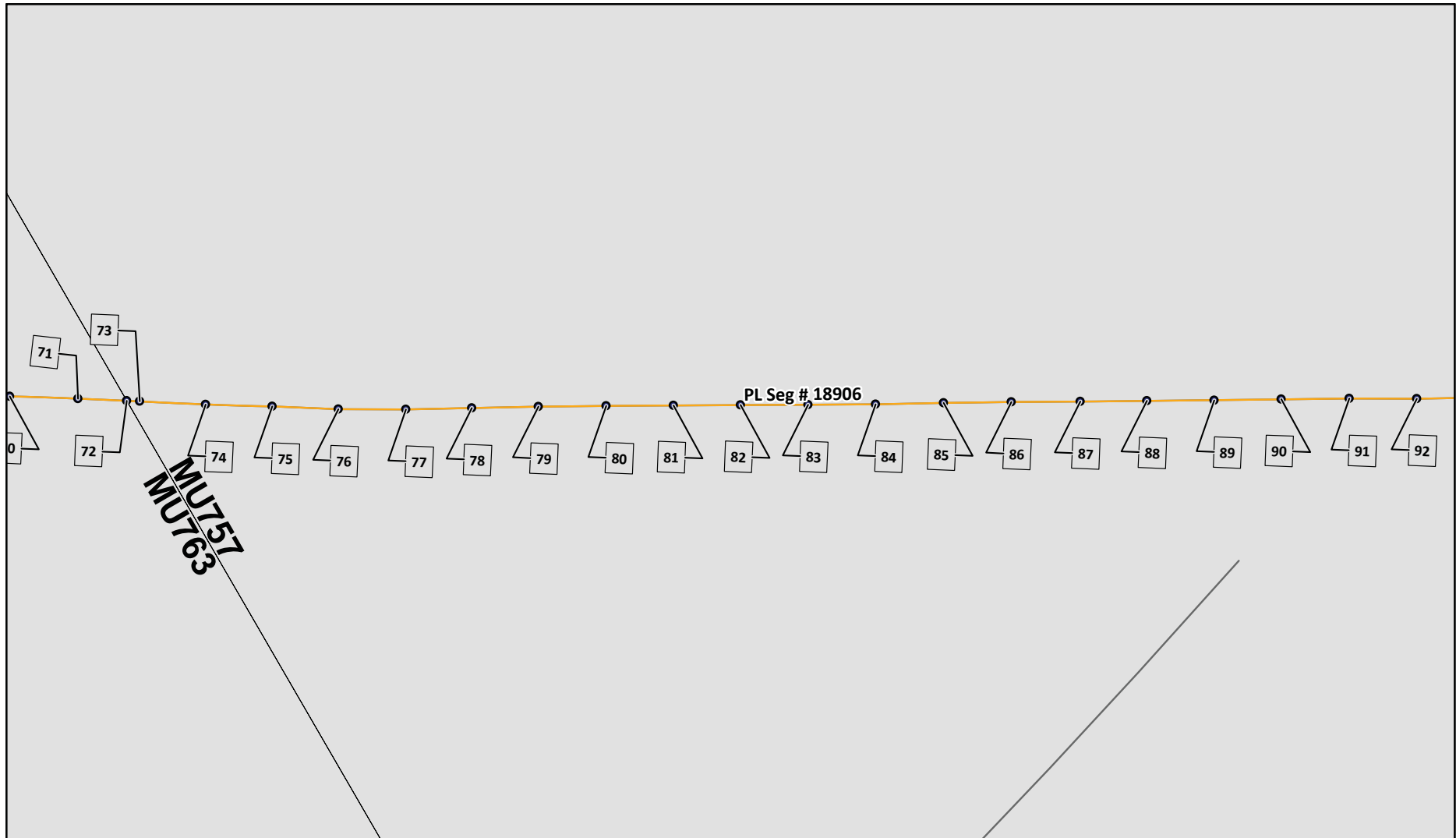
McMoRan Oil and Gas, LLC

6" Pipeline Decommissioning
Mustang Island
Blocks 757, 758, 763, 764, 782




Rev: (date/initial)	Created by: KFM
2016-06-06/GBH	Date: 05/22/2017
Job Number: 17034	PAGE 5 OF 10

NOTE: The contents of these plans are intended exclusively for the purpose of obtaining environmental compliance permits and are not construction drawings. No survey data obtained prior to application submittal.



 6" Pipeline - Decommissioned in Place

 6" Pipeline - Removed within Fairway

PL Seg # 17271 - $\pm 2,023'$ Decommissioned in Place
PL Seg # 18906 - $\pm 35,320'$ Decommissioned in Place

PL Seg # 18905 - $\pm 12,211'$ Removed within Fairway

McMoRan Oil and Gas, LLC

**6" Pipeline Decommissioning
Mustang Island
Blocks 757, 758, 763, 764, 782**



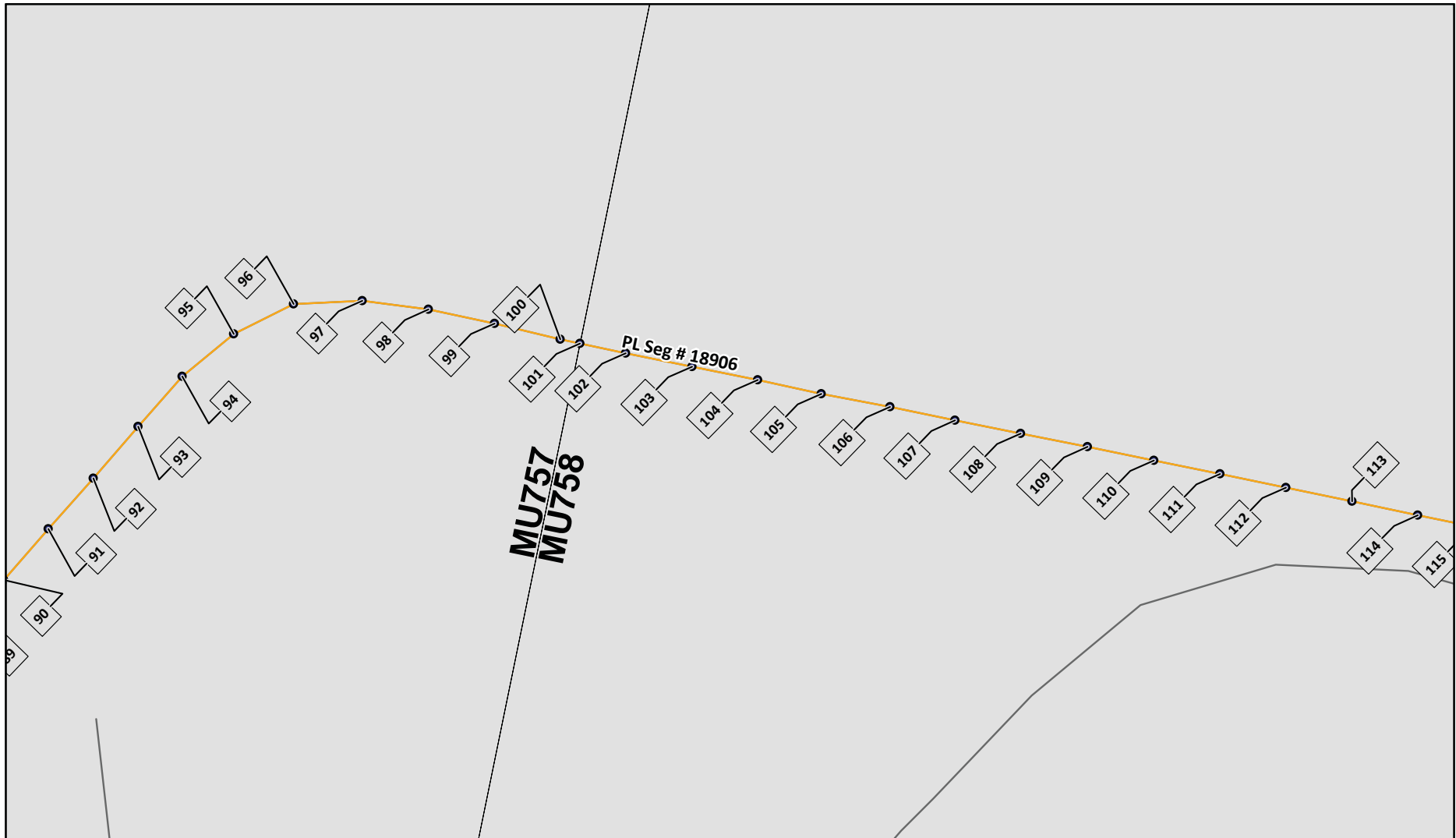
Job Number: 17034

Rev: (date/initial)
2016-06-06/GBH

Created by: KFM
Date: 05/22/2017

PAGE 6 OF 10

NOTE: The contents of these plans are intended exclusively for the purpose of obtaining environmental compliance permits and are not construction drawings. No survey data obtained prior to application submittal.



1,000 500 0 1,000
Feet



6" Pipeline - Decommissioned in Place

PL Seg # 17271 - $\pm 2,023'$ Decommissioned in Place
PL Seg # 18906 - $\pm 35,320'$ Decommissioned in Place

6" Pipeline - Removed within Fairway

PL Seg # 18905 - $\pm 12,211'$ Removed within Fairway

McMoRan Oil and Gas, LLC

6" Pipeline Decommissioning
Mustang Island
Blocks 757, 758, 763, 764, 782



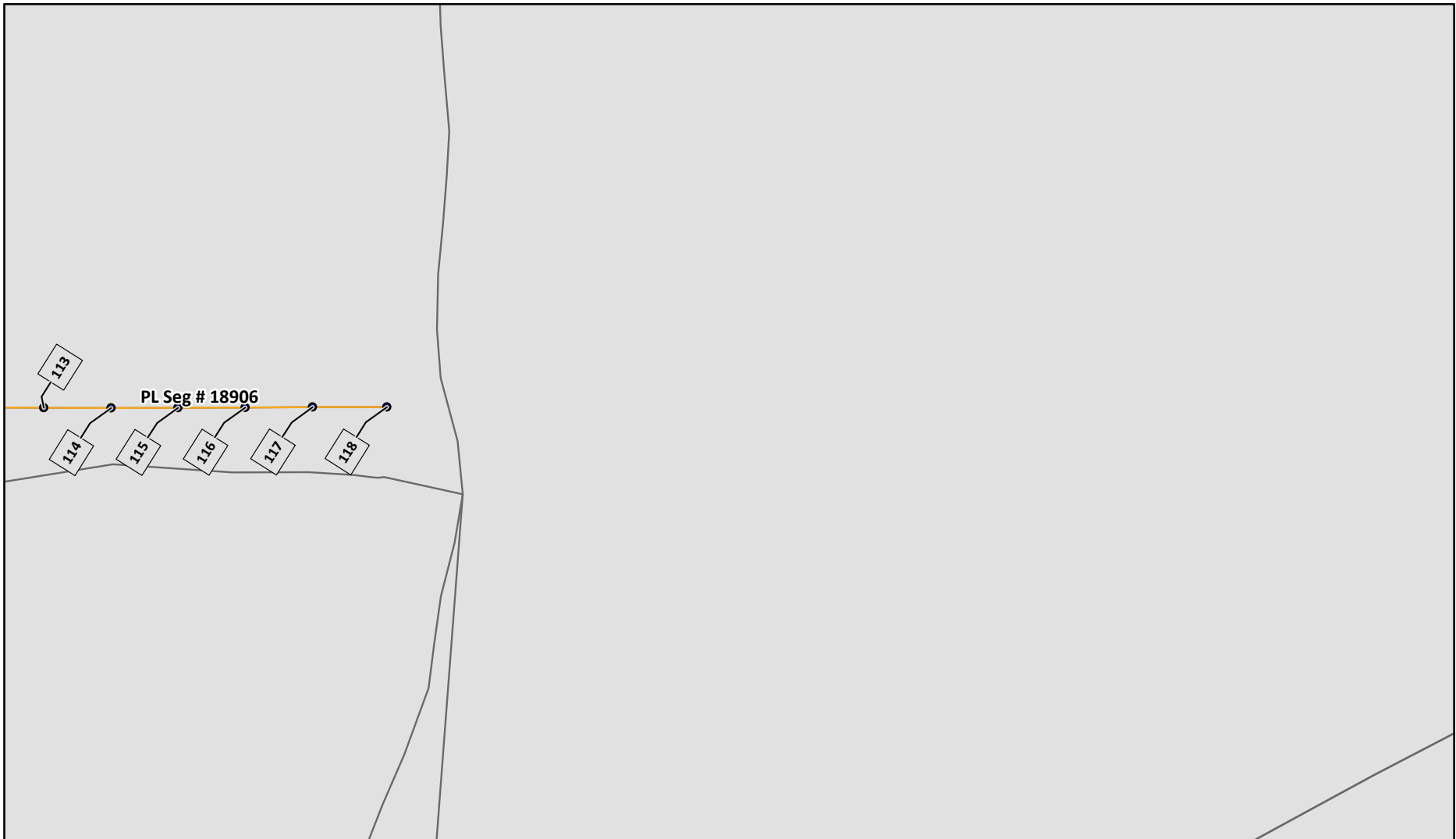
Job Number: 17034

Rev: (date/initial)
2016-06-06/GBH

Created by: KFM
Date: 05/22/2017

PAGE 7 OF 10

NOTE: The contents of these plans are intended exclusively for the purpose of obtaining environmental compliance permits and are not construction drawings. No survey data obtained prior to application submittal.



- 6" Pipeline - Decommissioned in Place
PL Seg # 17271 - ±2,023' Decommissioned in Place
PL Seg # 18906 - ±35,320' Decommissioned in Place
- 6" Pipeline - Removed within Fairway
PL Seg # 18905 - ± 12,211' Removed within Fairway

McMoRan Oil and Gas, LLC

**6" Pipeline Decommissioning
Mustang Island
Blocks 757, 758, 763, 764, 782**



Rev: (date/initial)
2016-06-06/GBH

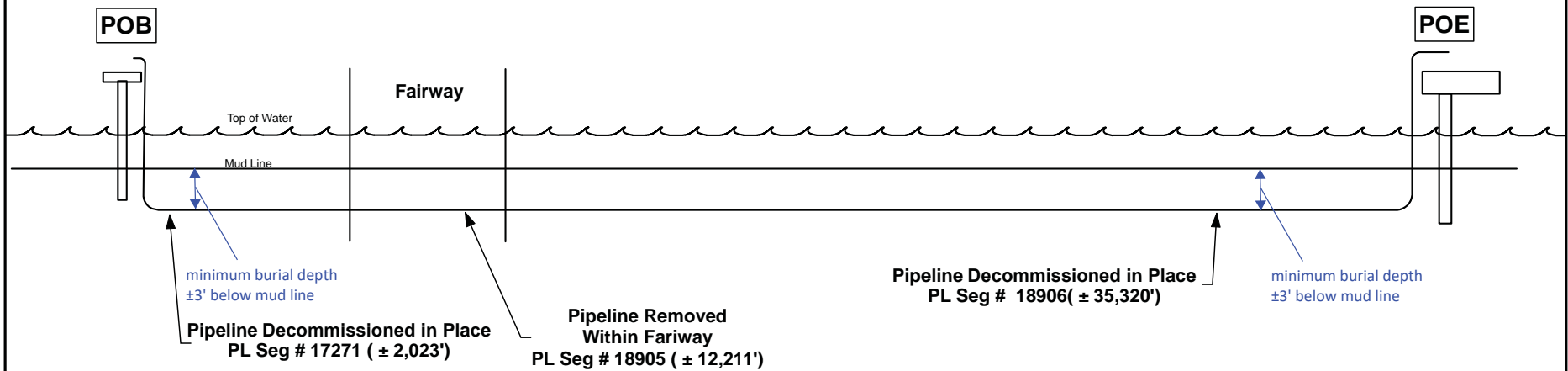
Created by: KFM
Date: 05/22/2017

Job Number: 17034

PAGE 8 OF 10

NOTE: The contents of these plans are intended exclusively for the purpose of obtaining environmental compliance permits and are not construction drawings. No survey data obtained prior to application submittal.

Typical Profile
6" Pipeline Decommissioning
Not to Scale



McMoRan Oil and Gas, LLC

6" Pipeline Decommissioning
Mustang Island
Blocks 757, 758, 763, 764, 782



Job Number: 17034

Rev: (date/initial)
2016-06-06/GBH

Created by: KFM
Date: 05/222017

PAGE 9 OF 10

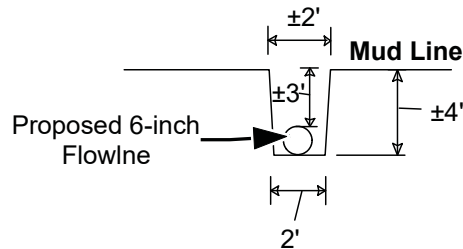
NOTE: The contents of these plans are intended exclusively for the purpose of obtaining environmental compliance permits and are not construction drawings. No survey data obtained prior to application submittal.

Decommissioned in Place PL Seg # 17121 - ± 2,023'		
Map Label	LONG(NAD27)	LAT(NAD27)
1	-96.663923	27.640313
2	-96.664032	27.640298
3	-96.664138	27.640175
4	-96.664307	27.640021
5	-96.664561	27.640174
6	-96.664508	27.640246
7	-96.663695	27.64135
8	-96.662877	27.642452
9	-96.662049	27.643573
10	-96.661625	27.644225

Pipeline Removed PL Seg # 18905 - ± 12,211"		
Map Label	LONG(NAD27)	LAT(NAD27)
11	-96.661502	27.644316
12	-96.661222	27.644696
13	-96.660394	27.645816
14	-96.659585	27.646934
15	-96.658754	27.648043
16	-96.657945	27.649167
17	-96.657114	27.650292
18	-96.656286	27.651409
19	-96.655456	27.652511
20	-96.654637	27.653644
21	-96.653797	27.654781
22	-96.652985	27.655882
23	-96.652157	27.65698
24	-96.651336	27.658089
25	-96.650511	27.659213
26	-96.649695	27.660337
27	-96.648861	27.661459
28	-96.648694	27.661688
29	-96.648042	27.662578
30	-96.647227	27.663699
31	-96.646405	27.664809
32	-96.645568	27.665941
33	-96.644746	27.667061
34	-96.643934	27.668173
35	-96.643108	27.6693
36	-96.642281	27.670413
37	-96.642118	27.670632
38	-96.641459	27.671524
39	-96.640811	27.672395
40	-96.640808	27.6724

Decommissioned in Place PL Seg # 18906 - ± 35,320'					
Map Label	LONG(NAD27)	LAT(NAD27)	Map Label	LONG(NAD27)	LAT(NAD27)
41	-96.640808	27.6724	80	-96.61132	27.712916
42	-96.640628	27.672642	81	-96.610559	27.714064
43	-96.64048	27.672856	82	-96.609801	27.715205
44	-96.639803	27.67377	83	-96.609037	27.716353
45	-96.638971	27.674898	84	-96.608275	27.717499
46	-96.638165	27.675998	85	-96.607526	27.718669
47	-96.637331	27.677106	86	-96.606771	27.719825
48	-96.6365	27.678202	87	-96.605994	27.720996
49	-96.63569	27.679322	88	-96.605248	27.722133
50	-96.634877	27.680462	89	-96.60449	27.72328
51	-96.634049	27.681578	90	-96.603744	27.724427
52	-96.633139	27.682785	91	-96.602983	27.725584
53	-96.632327	27.683888	92	-96.602209	27.72673
54	-96.631498	27.685026	93	-96.601448	27.727896
55	-96.630689	27.686144	94	-96.600689	27.729033
56	-96.629857	27.687244	95	-96.599741	27.730048
57	-96.62901	27.688377	96	-96.598561	27.730848
58	-96.628191	27.689501	97	-96.597076	27.731164
59	-96.627388	27.690626	98	-96.595594	27.731238
60	-96.626537	27.691764	99	-96.594096	27.73121
61	-96.625724	27.692879	100	-96.5926	27.731144
62	-96.624884	27.694	101	-96.592148	27.731134
63	-96.624087	27.695079	102	-96.591111	27.731113
64	-96.623262	27.696199	103	-96.589612	27.731093
65	-96.62243	27.697311	104	-96.588125	27.73108
66	-96.621595	27.698474	105	-96.586676	27.731043
67	-96.620785	27.699558	106	-96.585127	27.731041
68	-96.619966	27.700676	107	-96.583653	27.731017
69	-96.619131	27.701803	108	-96.582166	27.731004
70	-96.6183	27.702908	109	-96.580651	27.730991
71	-96.617481	27.704042	110	-96.579149	27.730969
72	-96.616884	27.704845	111	-96.57765	27.730952
73	-96.616725	27.70506	112	-96.576154	27.730929
74	-96.615912	27.706145	113	-96.574658	27.730903
75	-96.615118	27.707253	114	-96.573166	27.730874
76	-96.614311	27.708348	115	-96.571679	27.730855
77	-96.613535	27.709489	116	-96.570192	27.730837
78	-96.612811	27.710621	117	-96.568696	27.730819
79	-96.612078	27.711762	118	-96.56705	27.730795

Typical Jetting



Not to Scale

Hand jetted trench is to be backfilled by naturally occurring sedimentation.

Excavation for Pipeline Removal (Seg # 18905)	
± 0.56	Total Acres of Jetting
±3,618	Total Cubic Yards

McMoRan Oil and Gas, LLC

**6" Pipeline Decommissioning
Mustang Island
Blocks 757, 758, 763, 764, 782**



Job Number: 17034

Rev: (date/initial)
2016-06-06/GBH

Created by: KFM
Date: 05/22/2017

PAGE 10 OF 10

NOTE: The contents of these plans are intended exclusively for the purpose of obtaining environmental compliance permits and are not construction drawings. No survey data obtained prior to application submittal.