



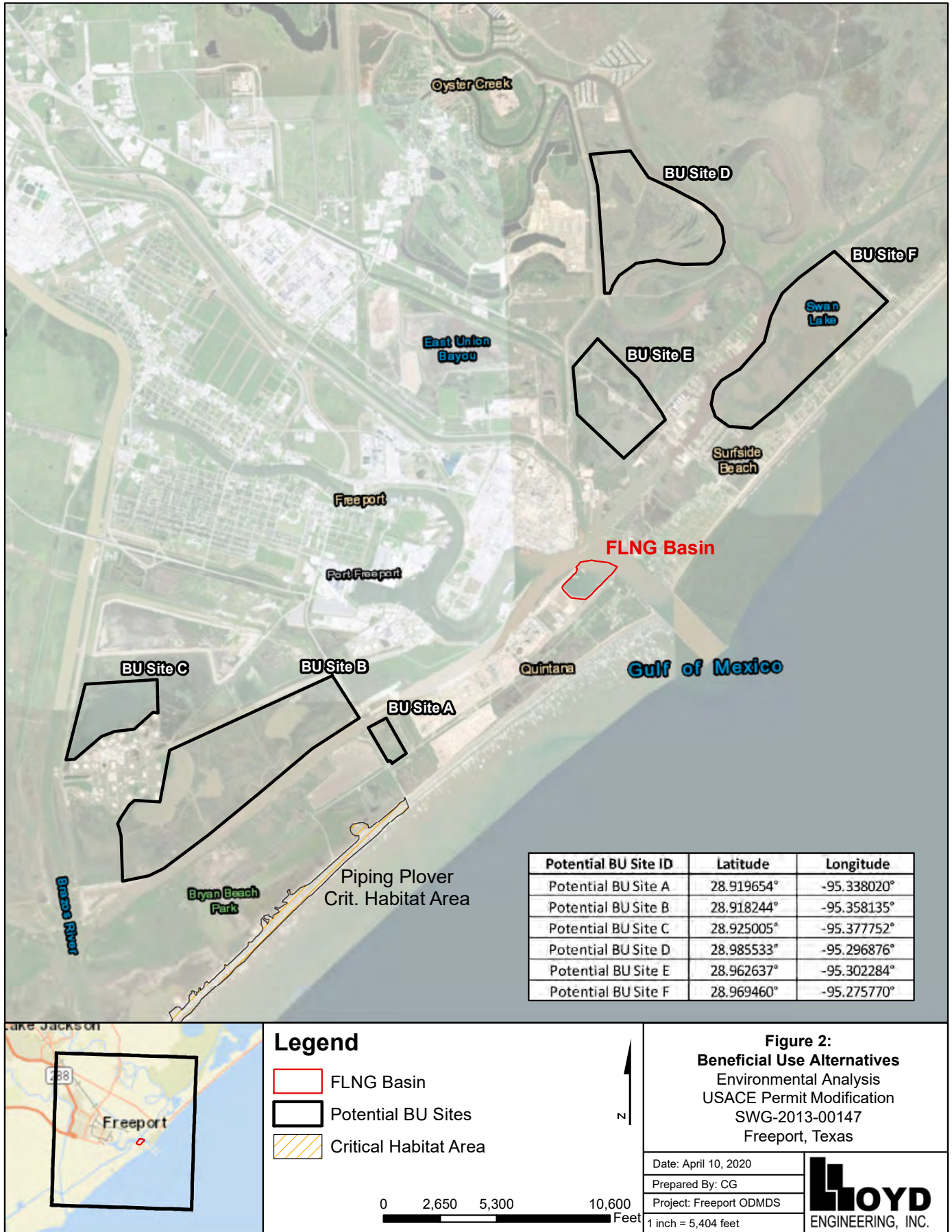
- Legend**
- FLNG Basin
 - Onsite DMPA



**Figure 1:
Vicintiy Map**
Environmental Analysis
USACE Permit Modification
SWG-2013-00147
Freeport, Texas


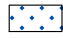



Date: Apr 23, 2020
Prepared By: CG
Project: Freeport ODMDs







Legend

-  Potential BU Site Boundary
-  Estuarine and Marine Deepwater
-  Estuarine and Marine Wetland
-  Freshwater Emergent Wetland
-  Lake

0 145 290 580
Feet



Figure 3A:
Potential Beneficial Use Site A
Environmental Analysis
USACE Permit Modification
SWG-2013-00147
Freeport, Texas

Date: April 10, 2020

Prepared By: CG

Project: Freeport ODMDS

1 inch = 300 feet

LOYD
ENGINEERING, INC.



Legend

- Potential BU Site Boundary
- Estuarine and Marine Deepwater
- Estuarine and Marine Wetland
- Freshwater Emergent Wetland
- Lake

0 750 1,500 3,000 Feet



Figure 3B:
Potential Beneficial Use Site B
Environmental Analysis
USACE Permit Modification
SWG-2013-00147
Freeport, Texas

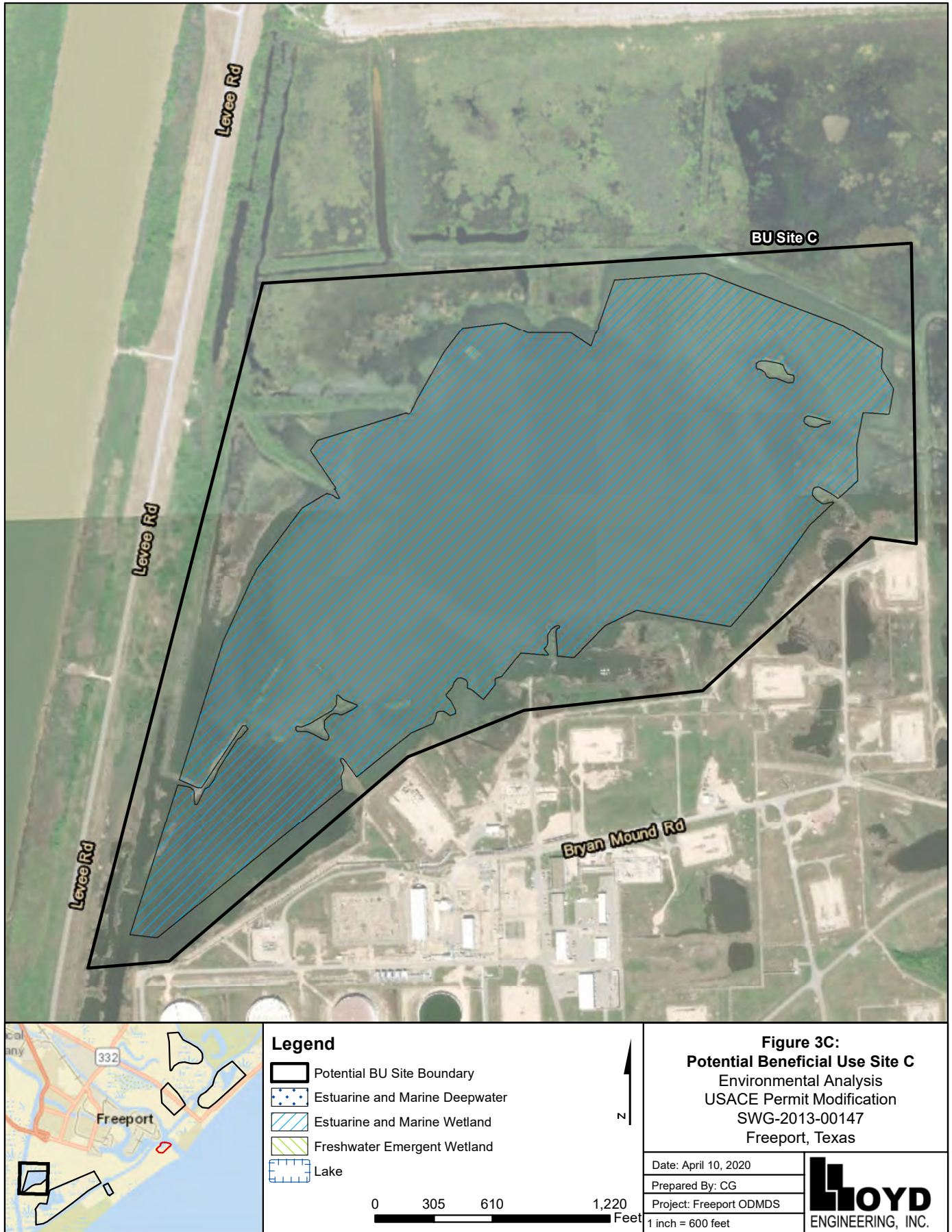
Date: April 10, 2020

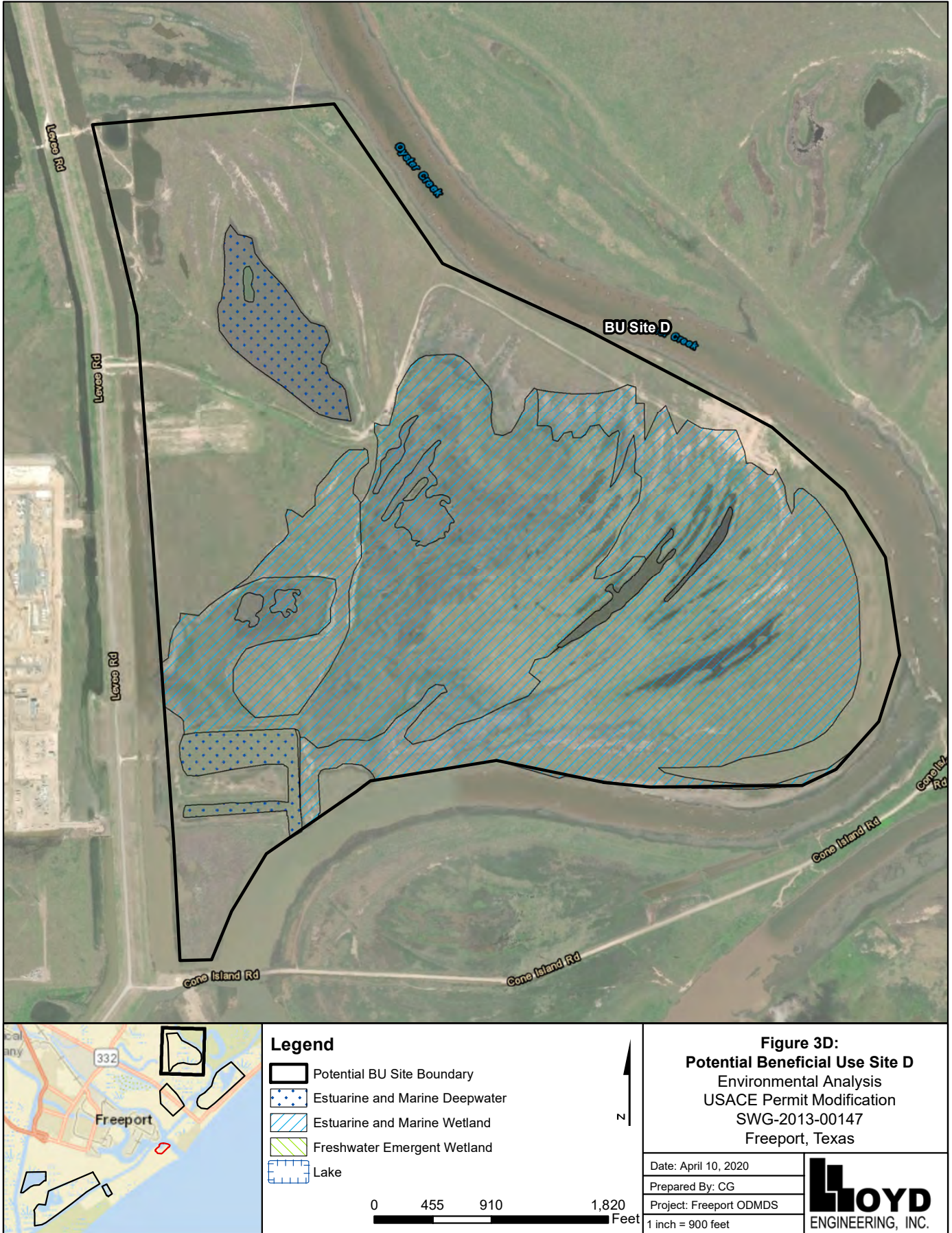
Prepared By: CG

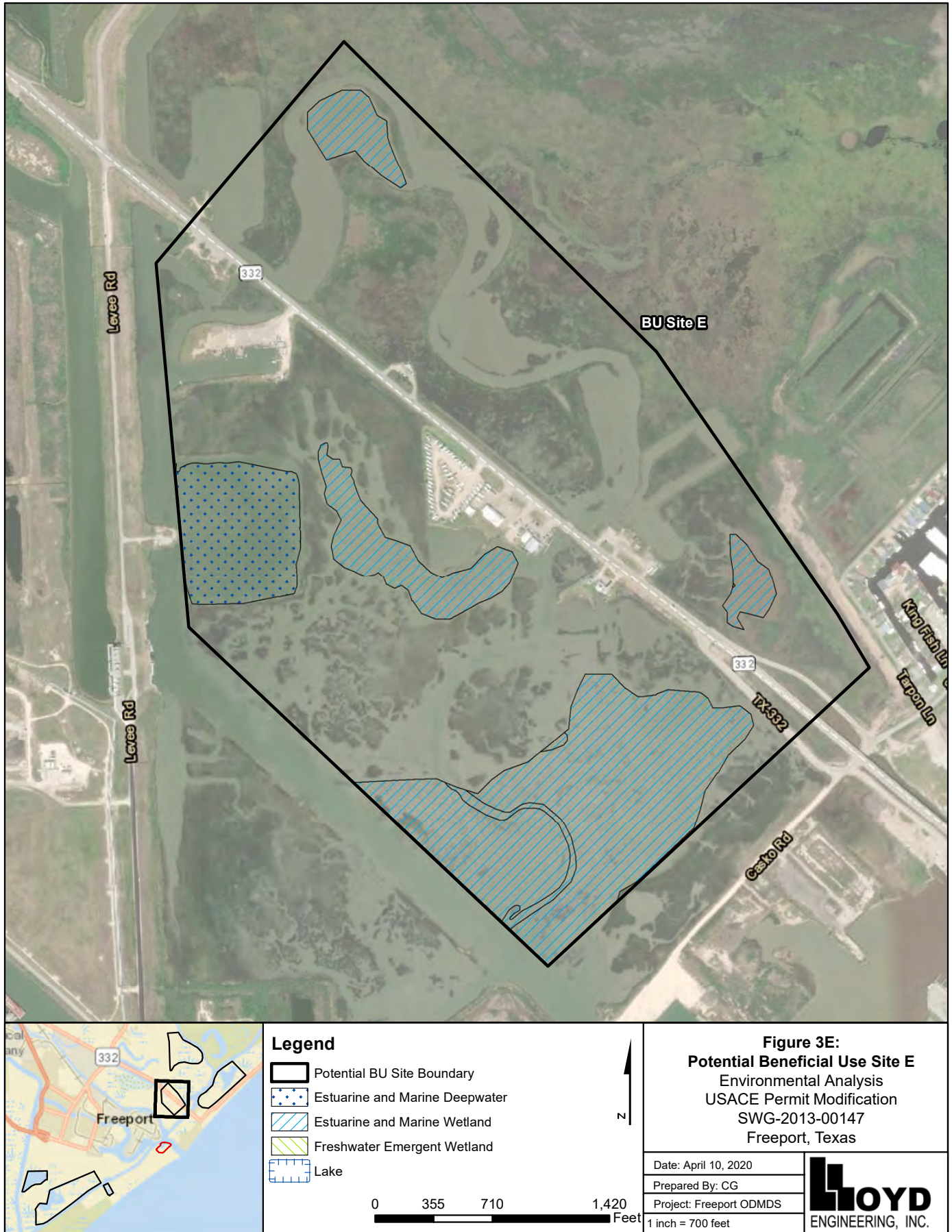
Project: Freeport ODMDS

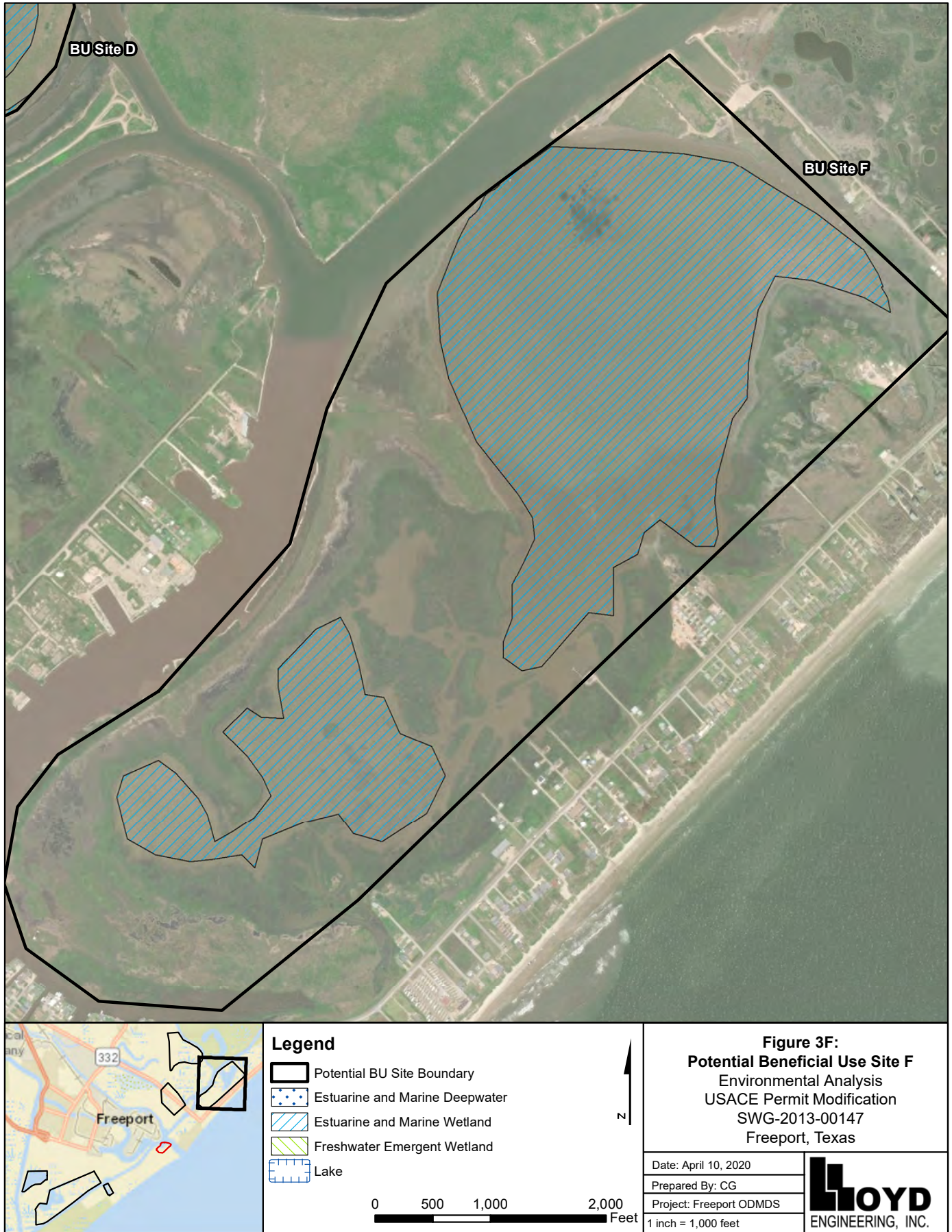
1 inch = 1,500 feet

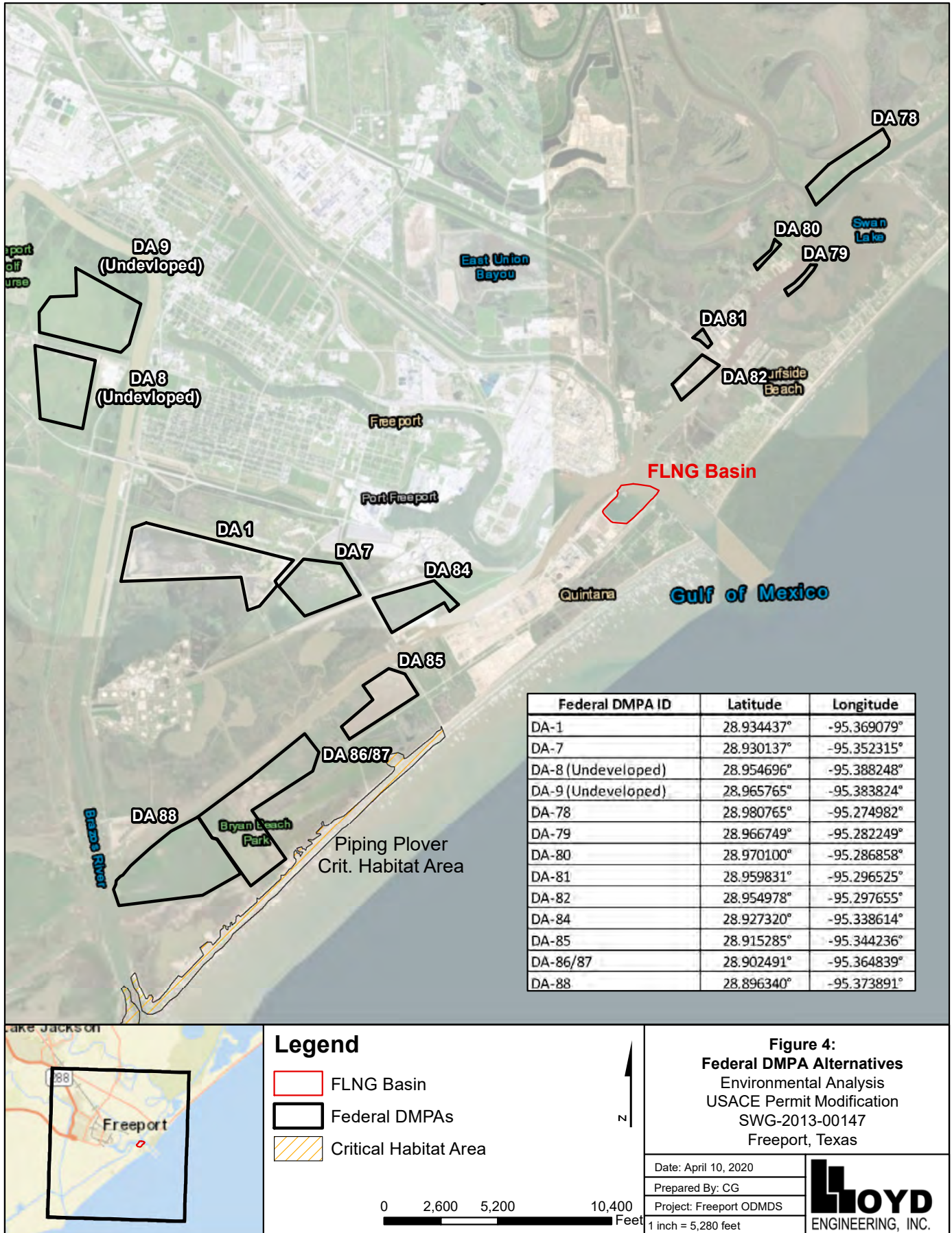
LOYD
ENGINEERING, INC.

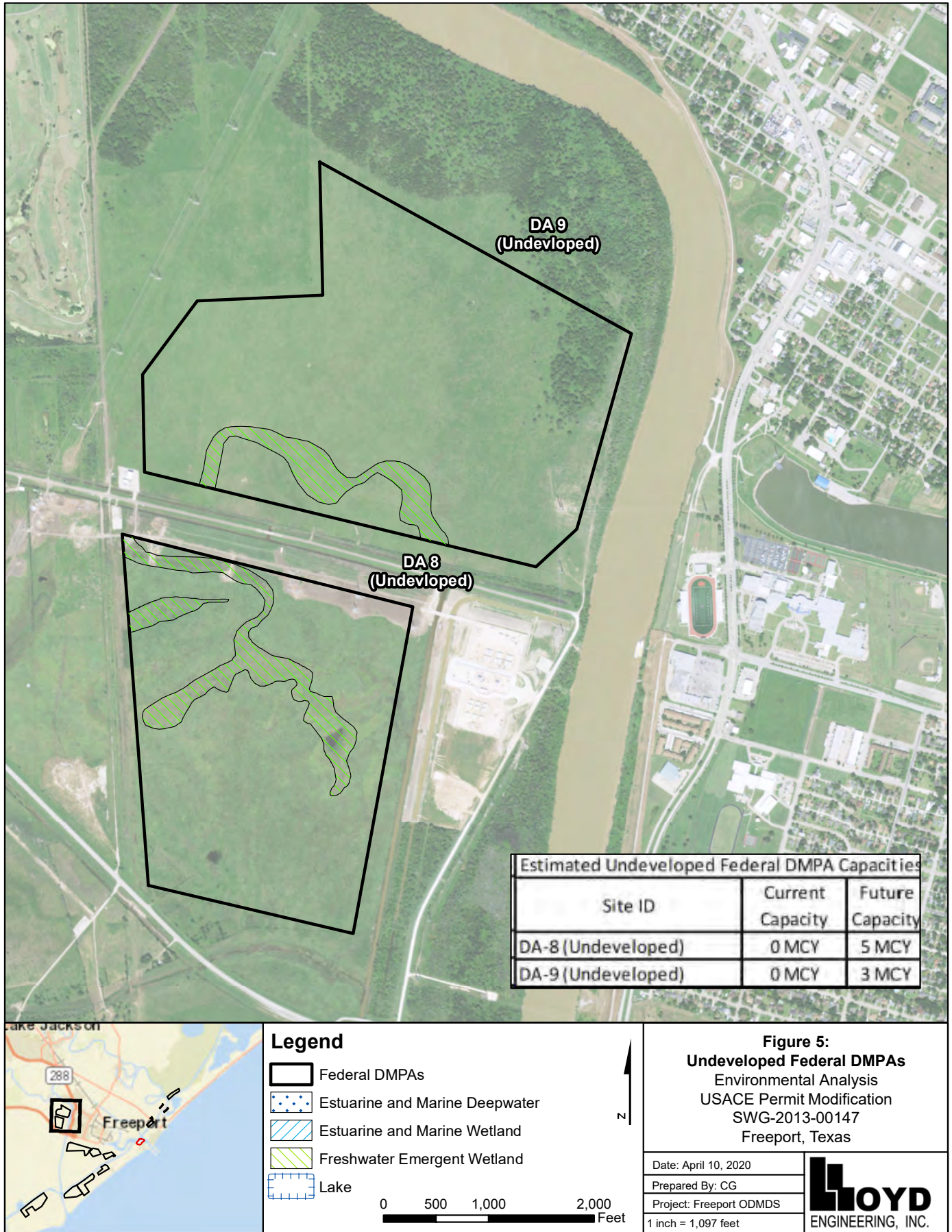


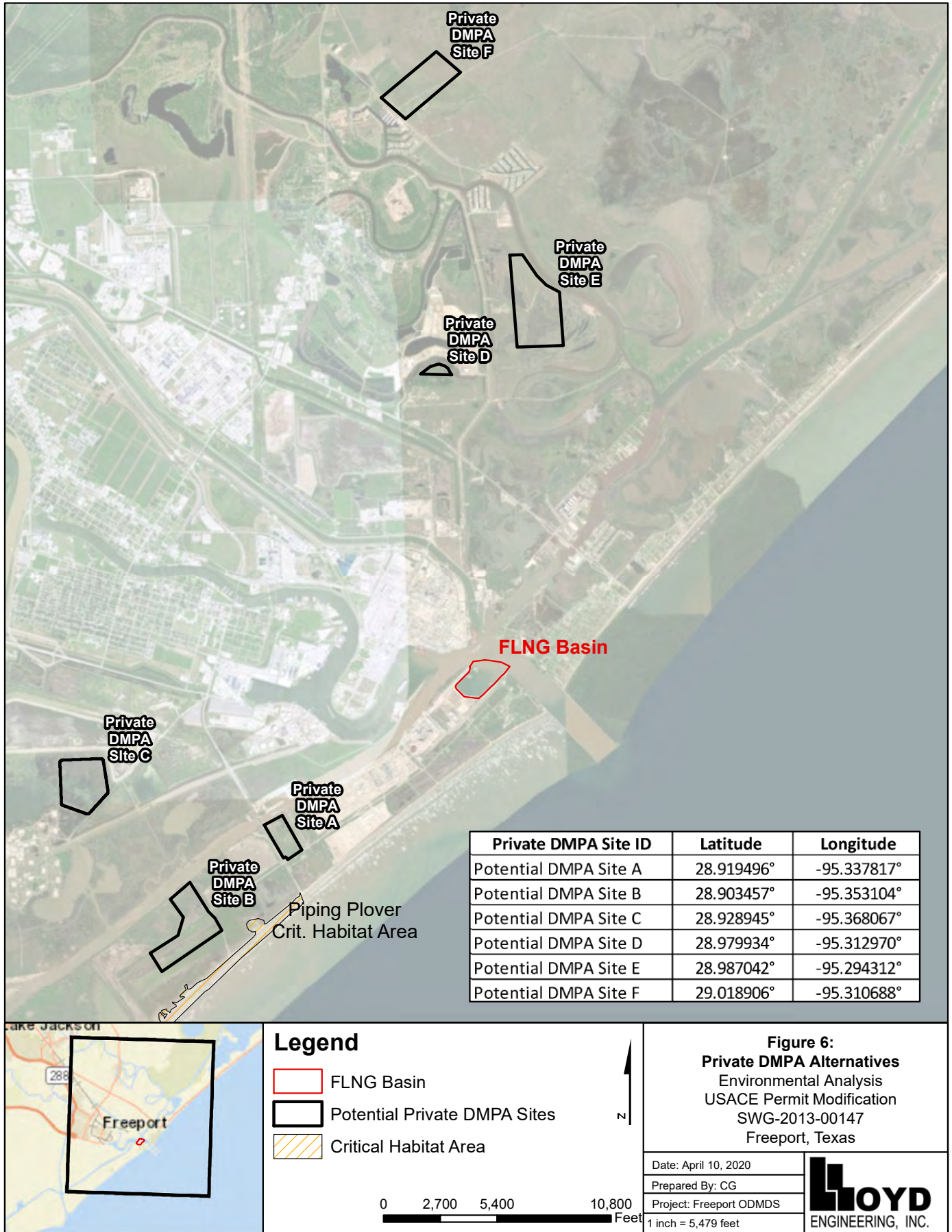














Estimated Material Capacity
1.5 Million Cubic Yards



Legend

- Potential Private DMPA Sites
- Estuarine and Marine Deepwater
- Estuarine and Marine Wetland
- Freshwater Emergent Wetland
- Lake



0 150 300 600 Feet

Figure 7A:
Private DMPA Site A
Environmental Analysis
USACE Permit Modification
SWG-2013-00147
Freeport, Texas

Date: April 10, 2020

Prepared By: CG

Project: Freeport ODMDS

1 inch = 300 feet





