

**SITE VICINITY MAP**

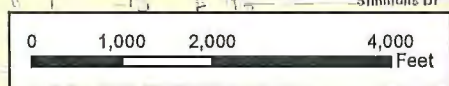
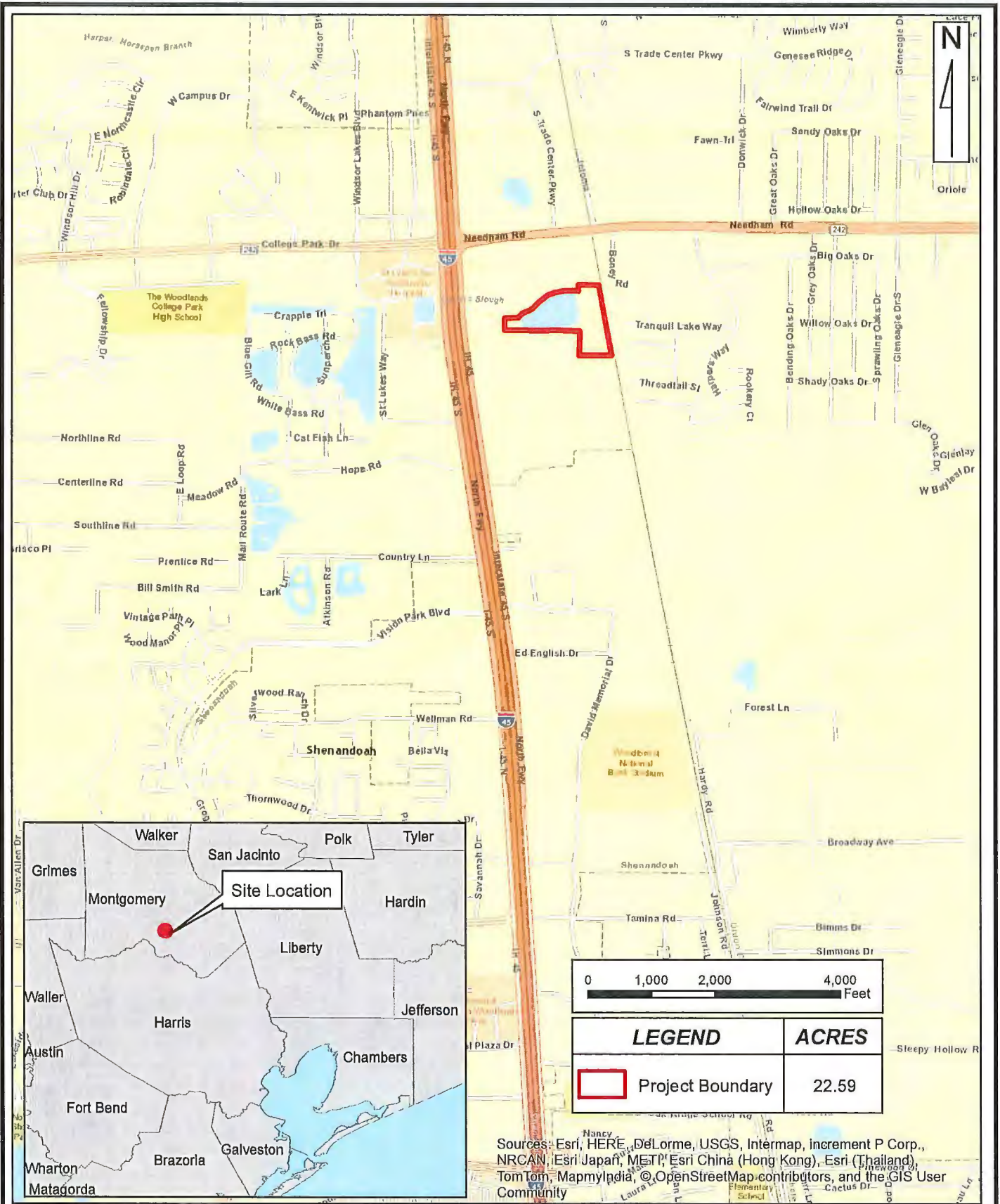
Project #: 10225N-WD  
 For: The Methodist Hospital System  
 Location: SH 242 and I-45  
Montgomery County, Texas


REVISIONS
7/6/16 by ADY

**BERG+OLIVER ASSOCIATES, INC.**  
 ENVIRONMENTAL SCIENCE & LAND USE CONSULTANTS  
 14701 ST. MARY'S LANE, SUITE 400  
 HOUSTON, TEXAS 77079 PHONE (281)589-0898 <http://www.bergoliver.com>







LEGEND	ACRES
 Project Boundary	22.59

Sources: Esri, HERE, DeLorme, USGS, Intermap, increment P Corp., NRCAN, Esri Japan, METI, Esri China (Hong Kong), Esri (Thailand), TomTom, MapmyIndia, © OpenStreetMap contributors, and the GIS User Community

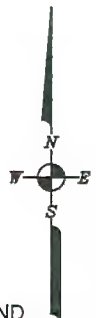
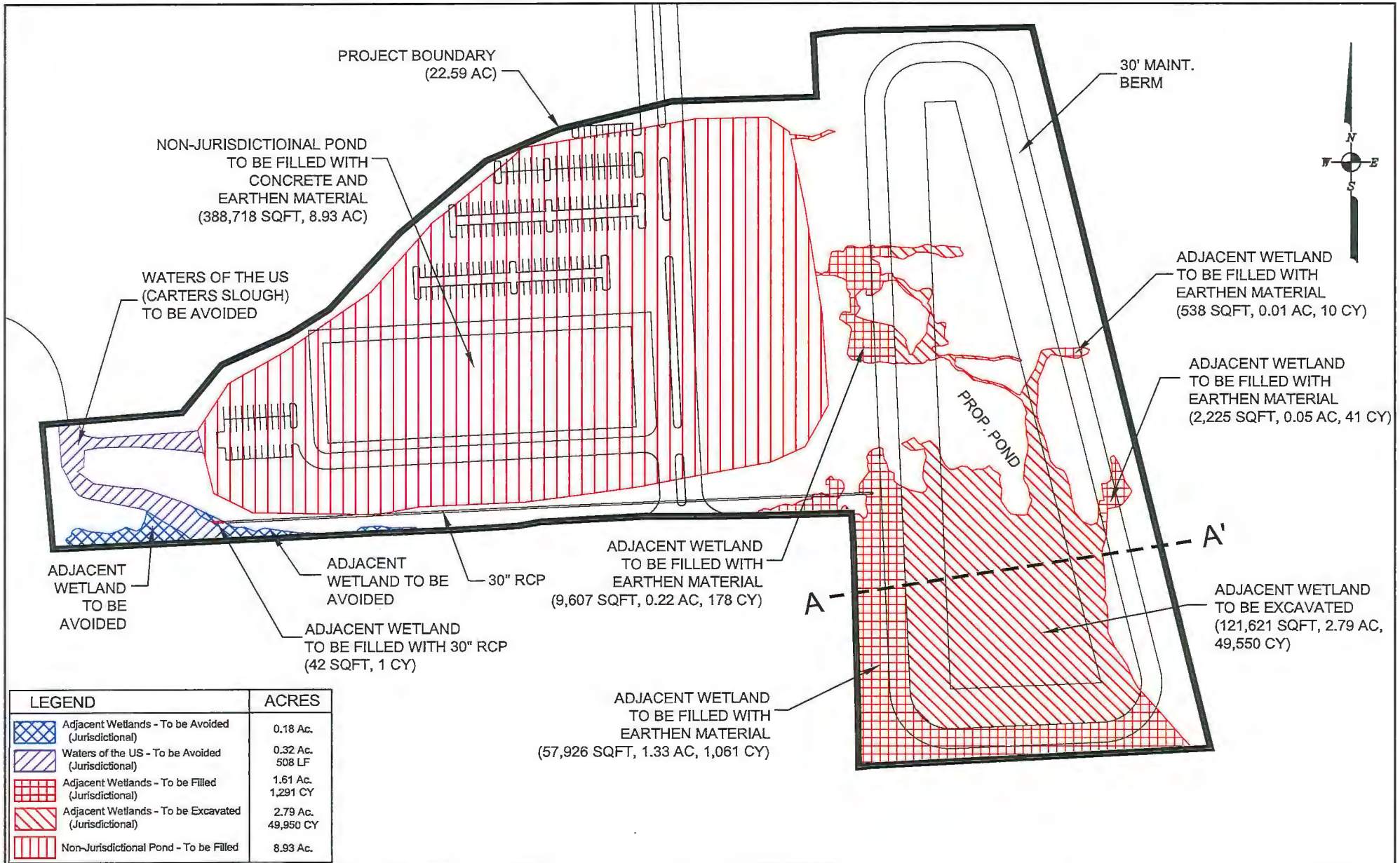
**SITE LOCATION MAP**

Project #: 10225N-WD  
 For: The Methodist Hospital System  
 Location: SH 242 and I-45  
Montgomery County, Texas

REVISIONS
7/6/16 by ADY

**BERG•OLIVER ASSOCIATES, INC.**  
 ENVIRONMENTAL SCIENCE & LAND USE CONSULTANTS  
 14701 ST. MARY'S LANE, SUITE 400  
 HOUSTON, TEXAS 77079 PHONE (281)589-0898 <http://www.bergoliver.com>





LEGEND	ACRES
Adjacent Wetlands - To be Avoided (Jurisdictional)	0.18 Ac.
Waters of the US - To be Avoided (Jurisdictional)	0.32 Ac. 508 LF
Adjacent Wetlands - To be Filled (Jurisdictional)	1.61 Ac. 1,291 CY
Adjacent Wetlands - To be Excavated (Jurisdictional)	2.79 Ac. 49,950 CY
Non-Jurisdictional Pond - To be Filled	8.93 Ac.

**PROPOSED SITE DEVELOPMENT  
PLAN VIEW**



PROJECT #: 10225N-IP  
 FOR: The Methodist Hospital System  
 LOCATION: SE of SH 242 & I-45  
Montgomery County, Texas

REVISIONS:
Sep. 14, 2016 by MDE

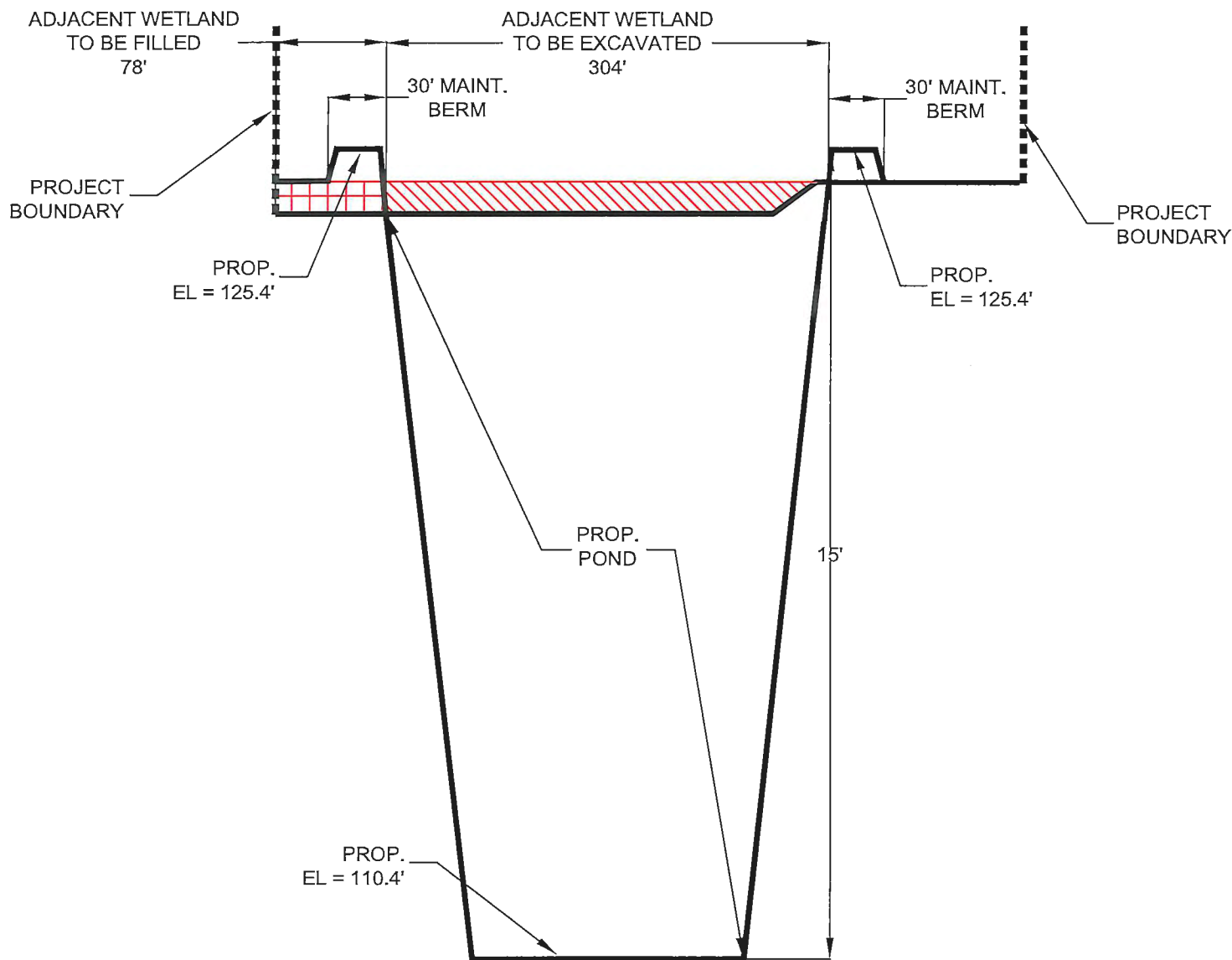
**BERG•OLIVER ASSOCIATES, INC.**  
 ENVIRONMENTAL SCIENCE &  
 LAND USE CONSULTANTS  
 14701 ST. MARY'S LANE, SUITE 400 HOUSTON, TX 77079  
 PHONE (281) 589-0898 <http://www.bergoliver.com>





A

A'



**PROPOSED SITE DEVELOPMENT  
CROSS SECTION A-A'**

PROJECT #: 10225N-IP  
 FOR: The Methodist Hospital System  
 LOCATION: SE of SH 242 & I-45  
Montgomery County, Texas

REVISIONS:
Sep. 14, 2016 by MOB

**BERG•OLIVER ASSOCIATES, INC.**  
 ENVIRONMENTAL SCIENCE &  
 LAND USE CONSULTANTS  
 14701 ST. MARY'S LANE, SUITE 400 HOUSTON, TX 77079  
 PHONE (281) 589-0898 <http://www.bergoliver.com>

