


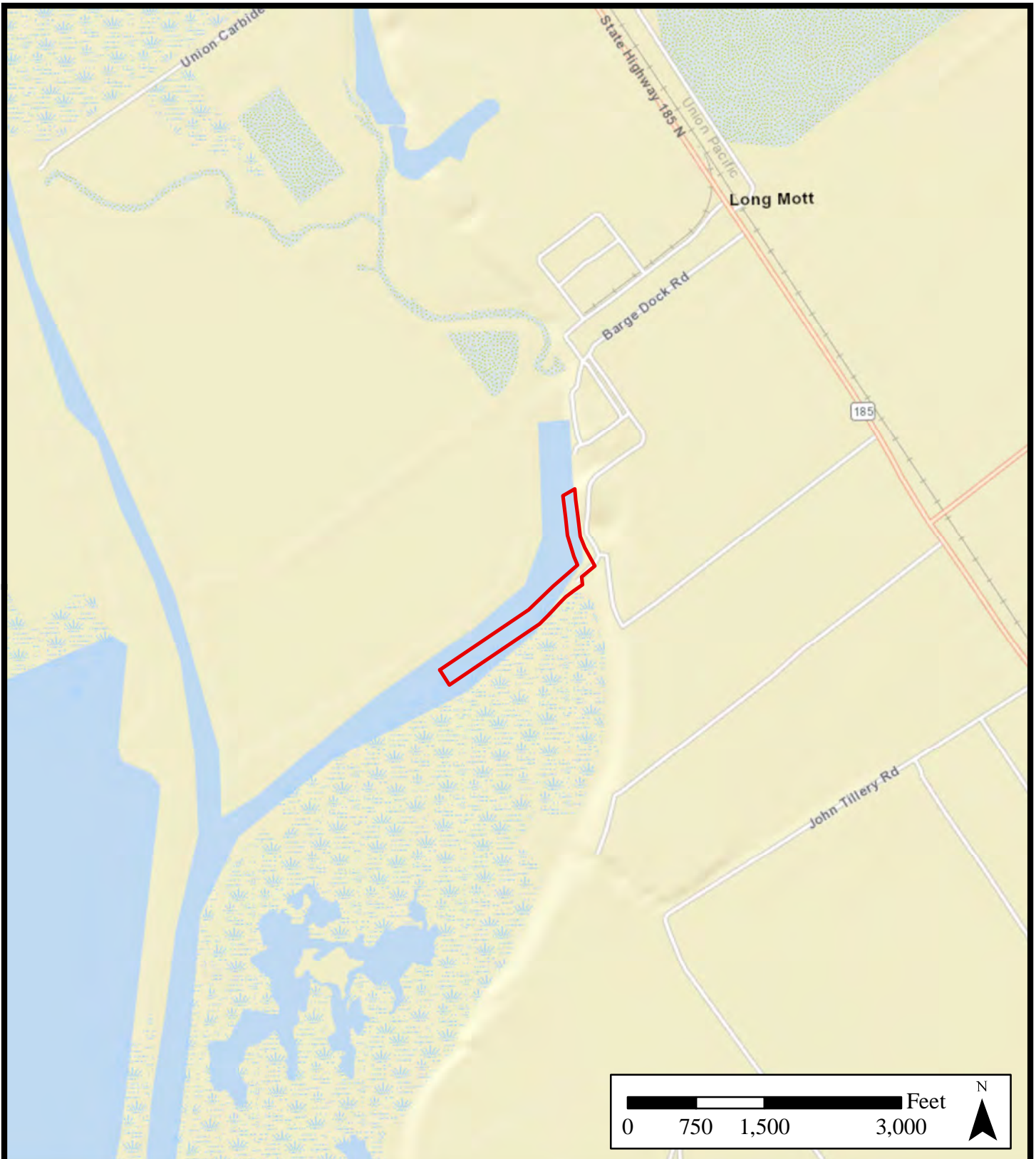
Legend

- ★ Project Location
- County Boundary



Figure 1.0
Vicinity
Calhoun County, Texas

Prepared by: 



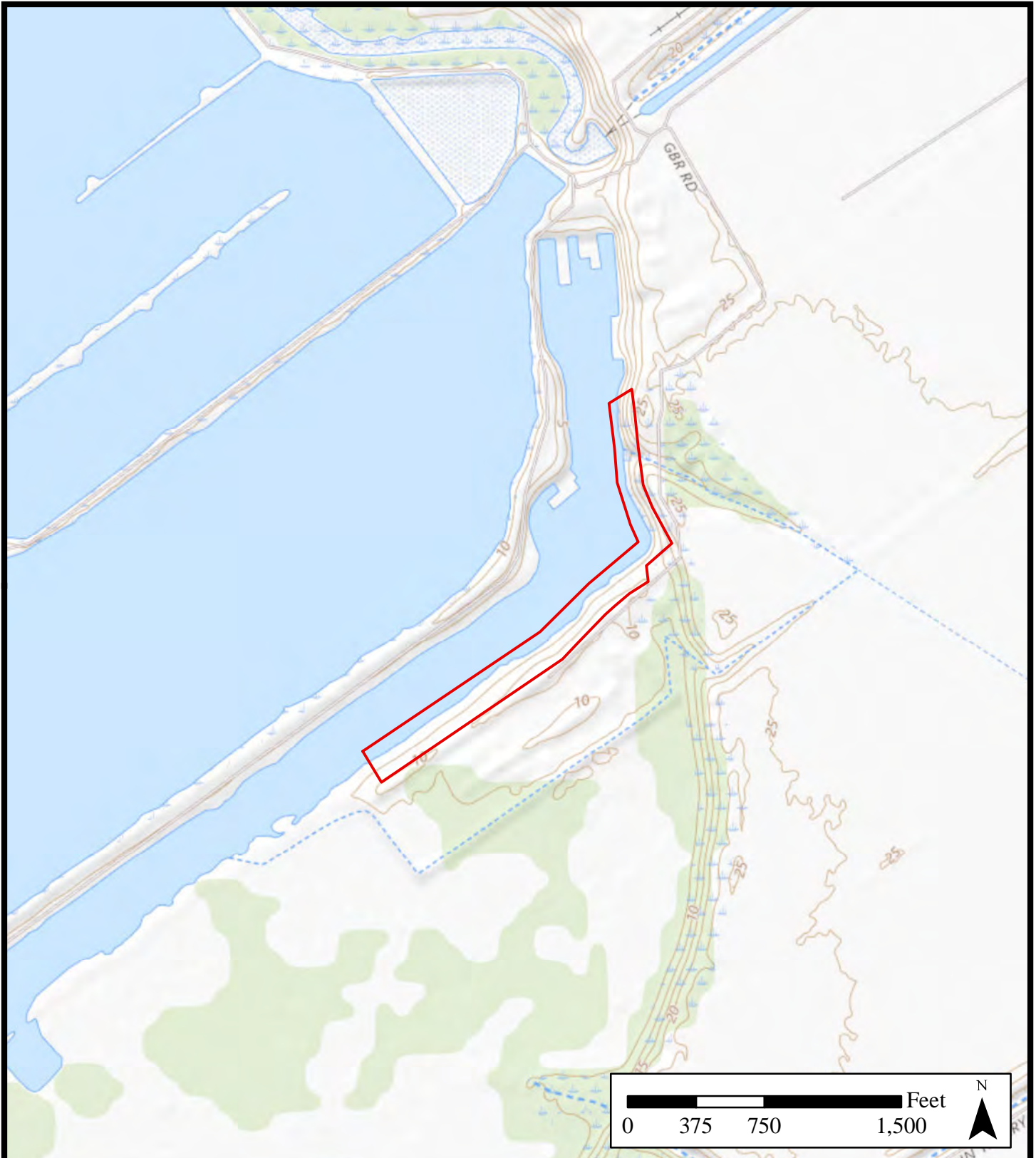
Legend

Project Boundary



Figure 2.0
Location
Calhoun County, Texas

Prepared by:




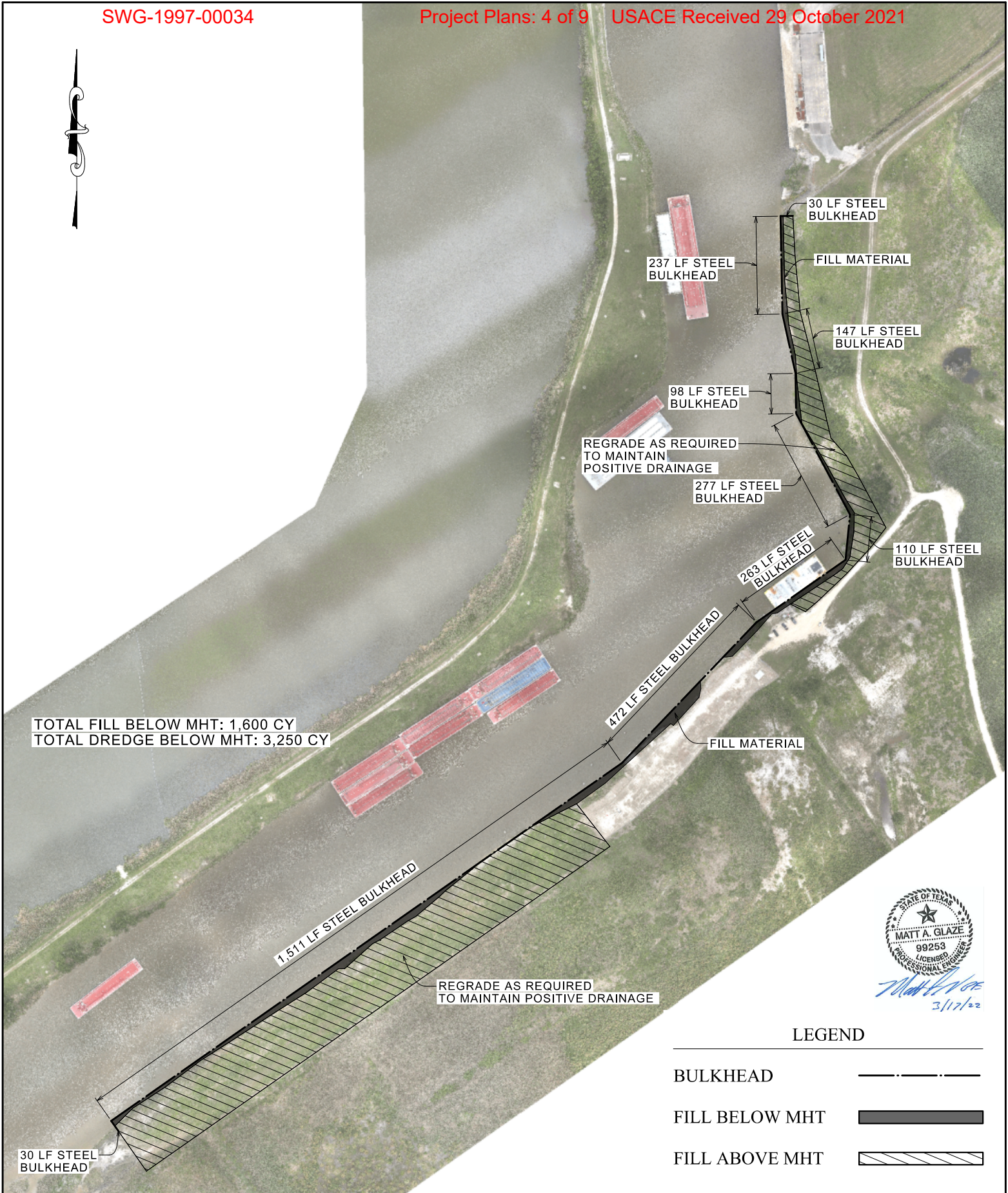
Legend

Project Boundary



Figure 3.0
Topographic
Calhoun County, Texas

Prepared by: 



Matt A. Glaze
3/17/22

LEGEND

BULKHEAD	— — — — —
FILL BELOW MHT	▬
FILL ABOVE MHT	▨

**WSCCND - LONG MOTT
BULKHEAD IMPROVEMENTS**

PRELIMINARY SITE PLAN



Matt A. Glaze
3/17/22

LEGEND

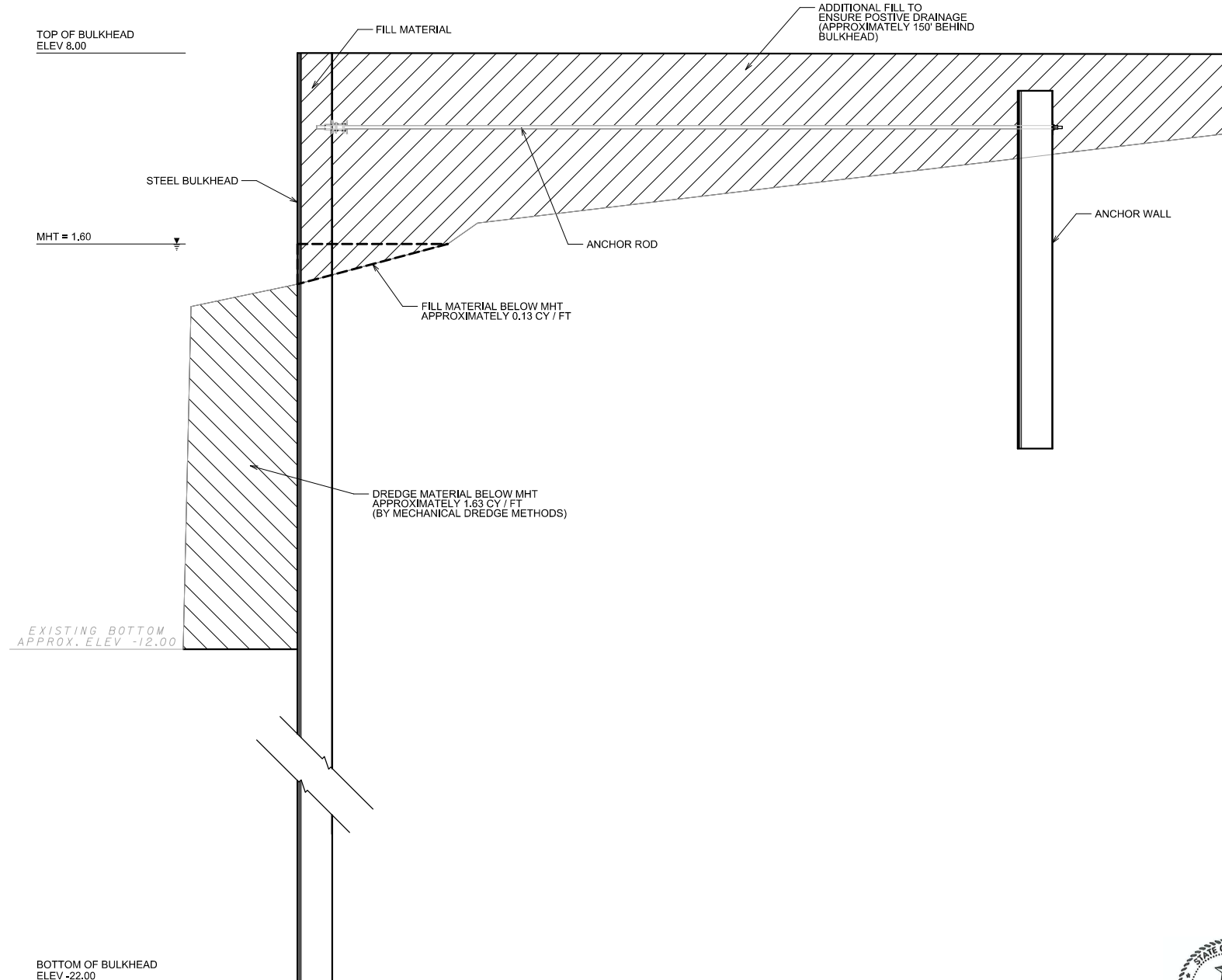
BULKHEAD	
FILL BELOW MHT	
FILL ABOVE MHT	

**WSSCND - LONG MOTT
BULKHEAD IMPROVEMENTS**

SECTIONS LAYOUT



2004 N. Commerce, Victoria, Texas 77901 · 361.578.9836
urbanvictoria.com · TREF# F-160



**WSCCND - LONG MOTT
BULKHEAD IMPROVEMENTS**

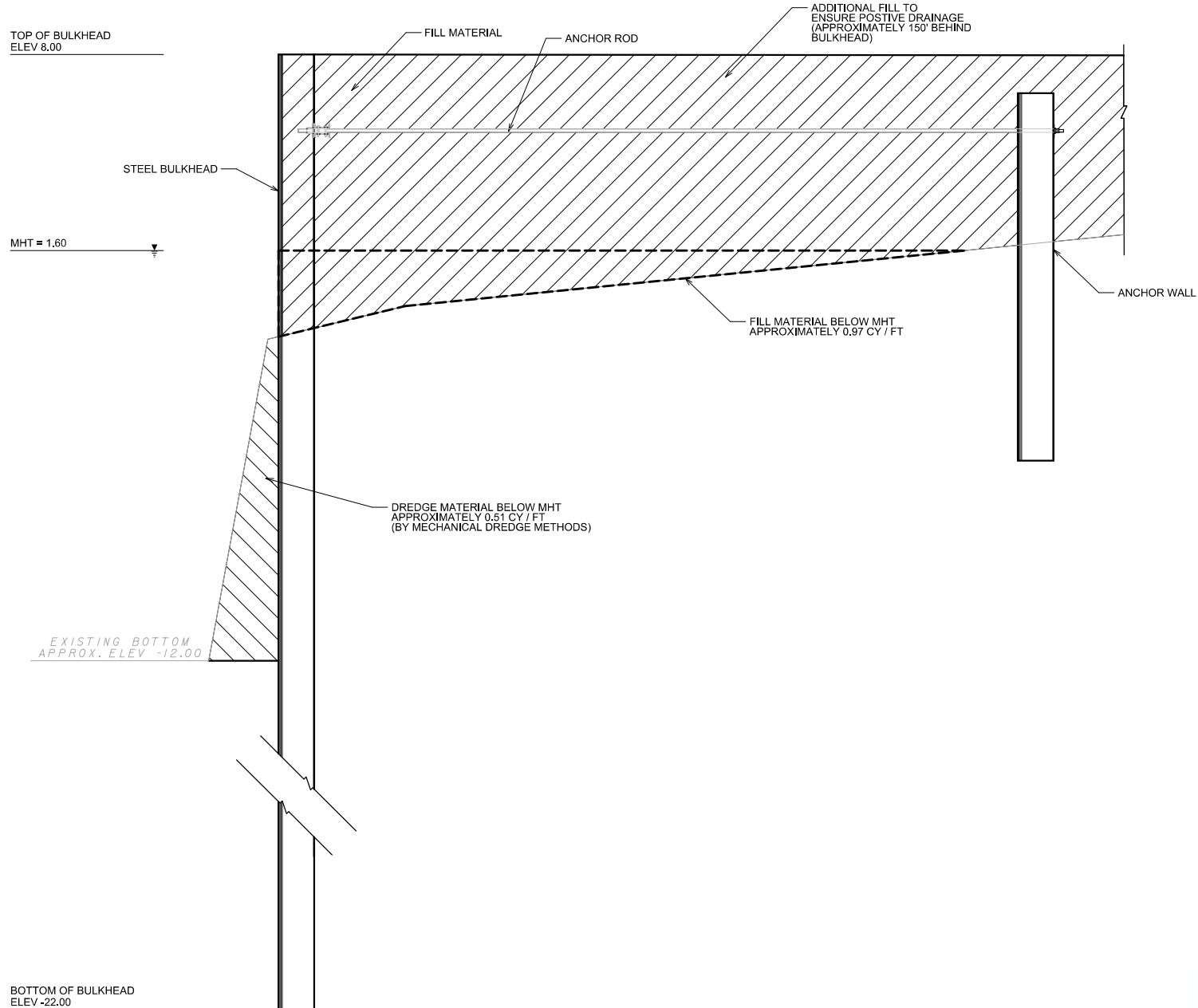
SECTION A-A



URBAN
engineering

2004 N. Commerce, Victoria, Texas 77901 · 361.578.9836
urbanvictoria.com · TREF# F-160

DATE 03/11/22



**WSCCND - LONG MOTT
BULKHEAD IMPROVEMENTS**

SECTION B-B



URBAN
engineering

2004 N. Commerce, Victoria, Texas 77901 · 361.578.9836
urbanvictoria.com · TREF# F-160

DATE 03/11/22

TOP OF BULKHEAD
ELEV 8.00

MHT = 1.60

EXISTING BOTTOM
APPROX. ELEV -12.00

BOTTOM OF BULKHEAD
ELEV -22.00

STEEL BULKHEAD

FILL MATERIAL

ANCHOR ROD

ADDITIONAL FILL TO
ENSURE POSITIVE DRAINAGE
(APPROXIMATELY 70' BEHIND
BULKHEAD)

ANCHOR WALL

FILL MATERIAL BELOW MHT
APPROXIMATELY 0.45 CY / FT

DREDGE MATERIAL BELOW MHT
APPROXIMATELY 0.53 CY / FT
(BY MECHANICAL DREDGE METHODS)



**WSCCND - LONG MOTT
BULKHEAD IMPROVEMENTS**

SECTION C-C



URBAN
engineering
2004 N. Commerce, Victoria, Texas 77901 · 361.578.9836
urbanvictoria.com · TREF# F-160

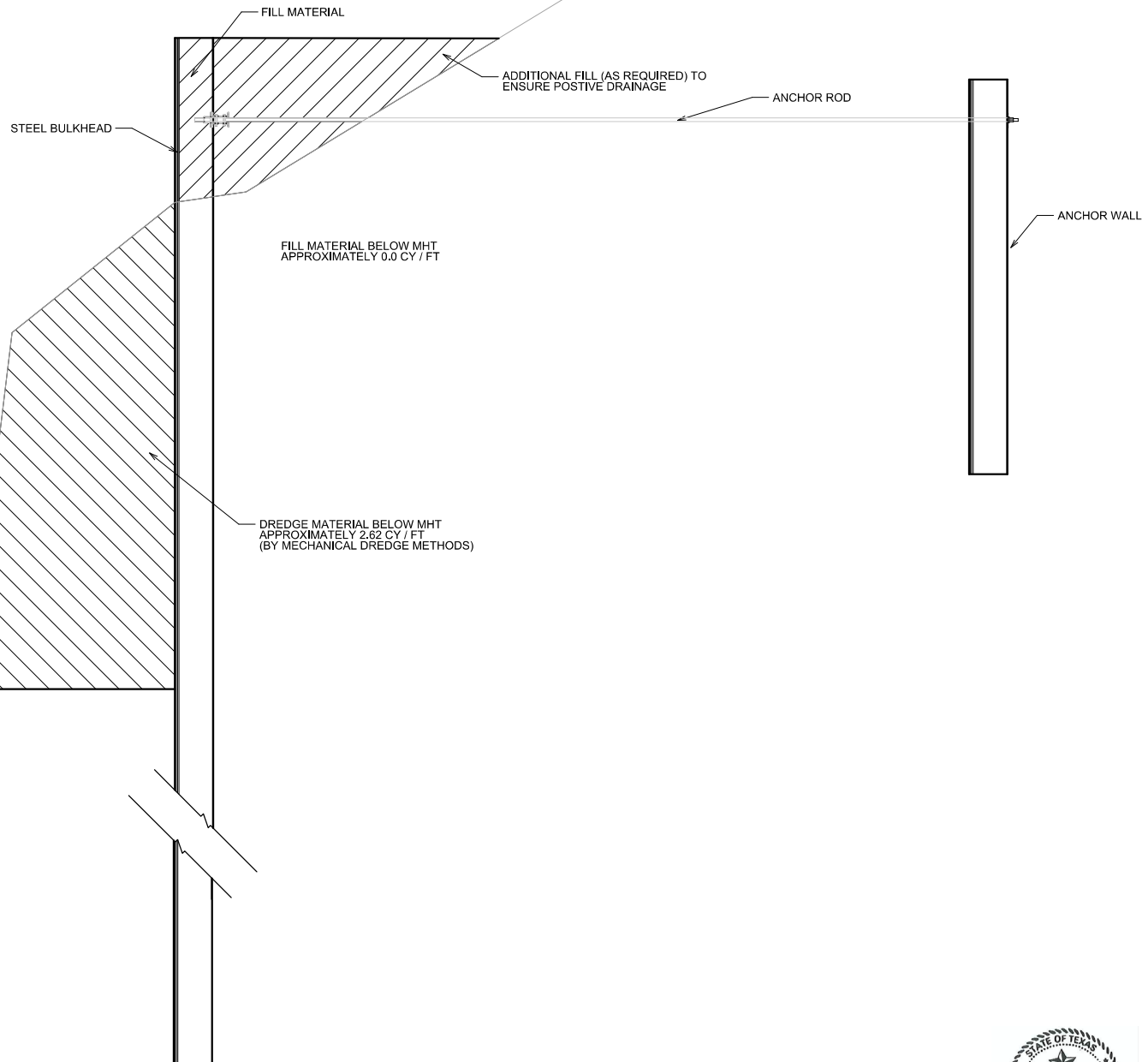
DATE 03/11/22

TOP OF BULKHEAD
ELEV 8.00

MHT = 1.60

EXISTING BOTTOM
APPROX. ELEV -12.00

BOTTOM OF BULKHEAD
ELEV -22.00



**WSCCND - LONG MOTT
BULKHEAD IMPROVEMENTS**

SECTION D-D



URBAN
engineering

2004 N. Commerce, Victoria, Texas 77901 · 361.578.9836
urbanvictoria.com · TREF# F-160



DATE 03/11/22