


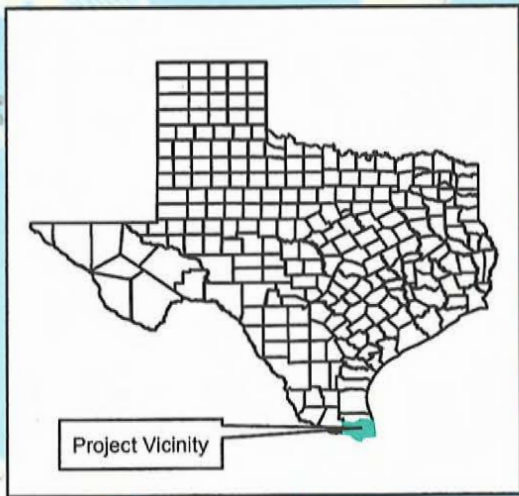
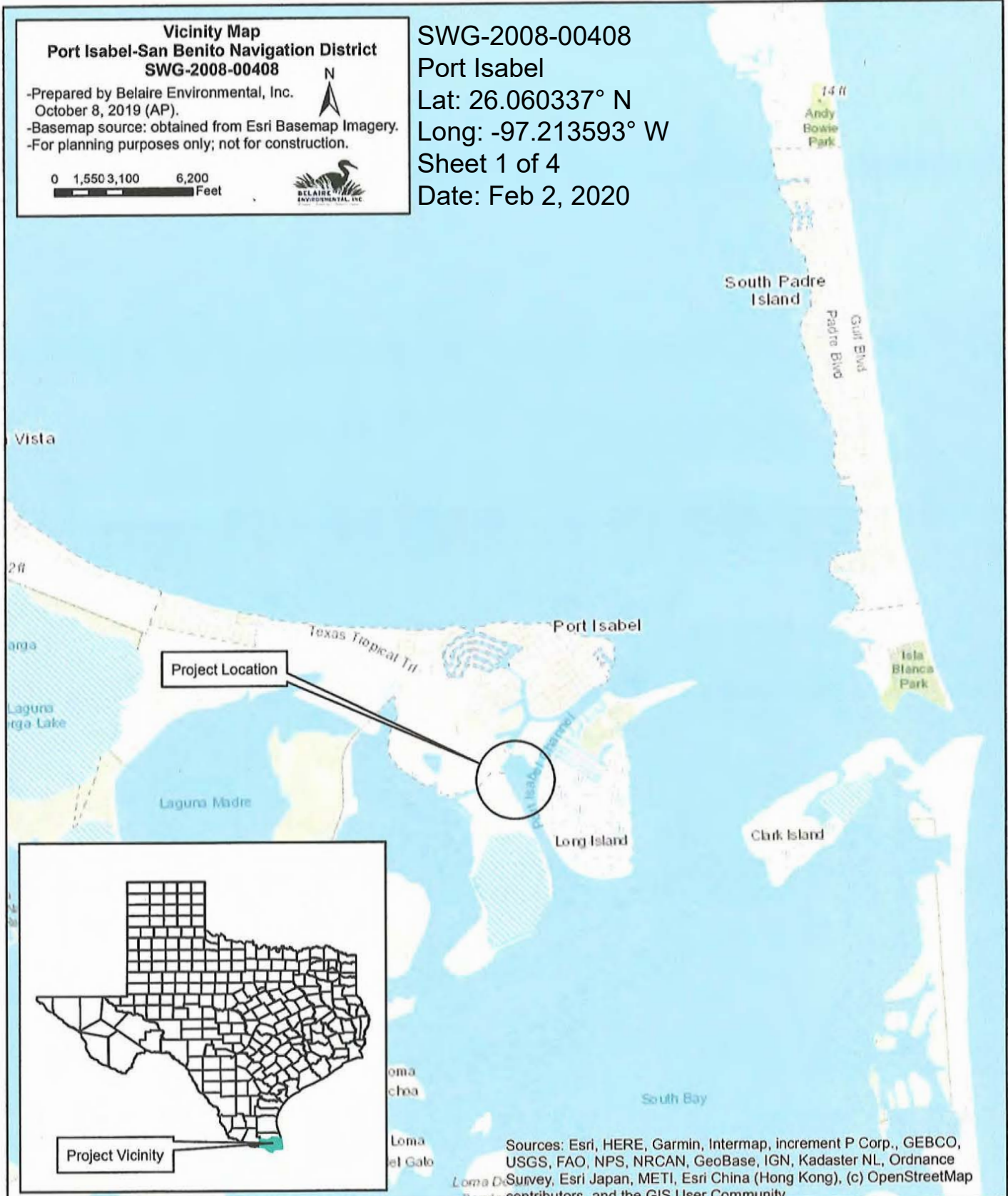
**Vicinity Map**  
**Port Isabel-San Benito Navigation District**  
**SWG-2008-00408**

-Prepared by Belaire Environmental, Inc.  
 October 8, 2019 (AP).  
 -Basemap source: obtained from Esri Basemap Imagery.  
 -For planning purposes only; not for construction.

0 1,550 3,100 6,200  
 Feet



SWG-2008-00408  
 Port Isabel  
 Lat: 26.060337° N  
 Long: -97.213593° W  
 Sheet 1 of 4  
 Date: Feb 2, 2020



Sources: Esri, HERE, Garmin, Intermap, increment P Corp., GEBCO, USGS, FAO, NPS, NRCAN, GeoBase, IGN, Kadaster NL, Ordnance Survey, Esri Japan, METI, Esri China (Hong Kong), (c) OpenStreetMap contributors, and the GIS User Community

SWG-2008-00408  
 Port Isabel-San Benito Navigation District  
 Maintenance Dredging

Mr. Steve Bearden  
 Port Isabel-San Benito Navigation District  
 250 Industrial Drive  
 Port Isabel, TX 78578



Agent:  
 Belaire Environmental, Inc.  
 PO Box 741 Rockport, TX 78381  
 October 8, 2019 page \_\_\_\_ of \_\_\_\_

**Bathymetry Survey  
Cross Sections  
PISBND**

-Prepared by Belaire Environmental, Inc.  
December 5, 2019 (AP).  
-Basemap source: obtained from Pictometry  
Low Altitude Aerial Imagery.  
-For planning purposes only; not for construction.

0 20 40 80  
Feet



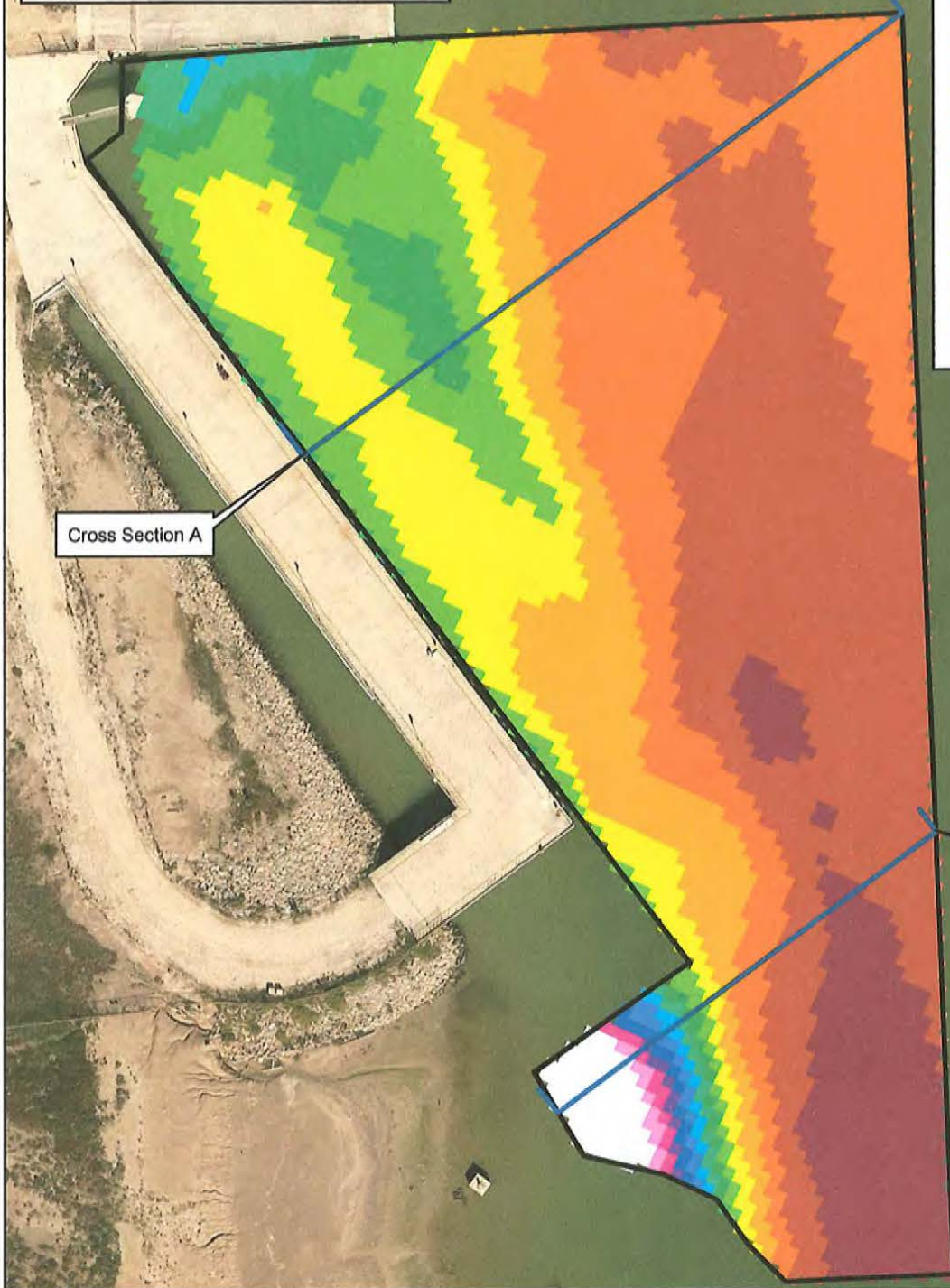
SWG-2008-00408  
Port Isabel  
Lat: 26.060337° N  
Long: -97.213593° W  
Sheet 2 of 4  
Date: Feb 2, 2020

**Legend**

- Cross Sections
  - ▭ SubSea7 Dredge Footprint
- Bathymetry Survey**

<VALUE>

- 3.59 - 8
- 8.01 - 10
- 10.1 - 12
- 12.1 - 14
- 14.1 - 16
- 16.1 - 18
- 18.1 - 20
- 20.1 - 22
- 22.1 - 24
- 24.1 - 26
- 26.1 - 28
- 28.1 - 30
- 30.1 - 32
- 32.1 - 34
- 34.1 - 36



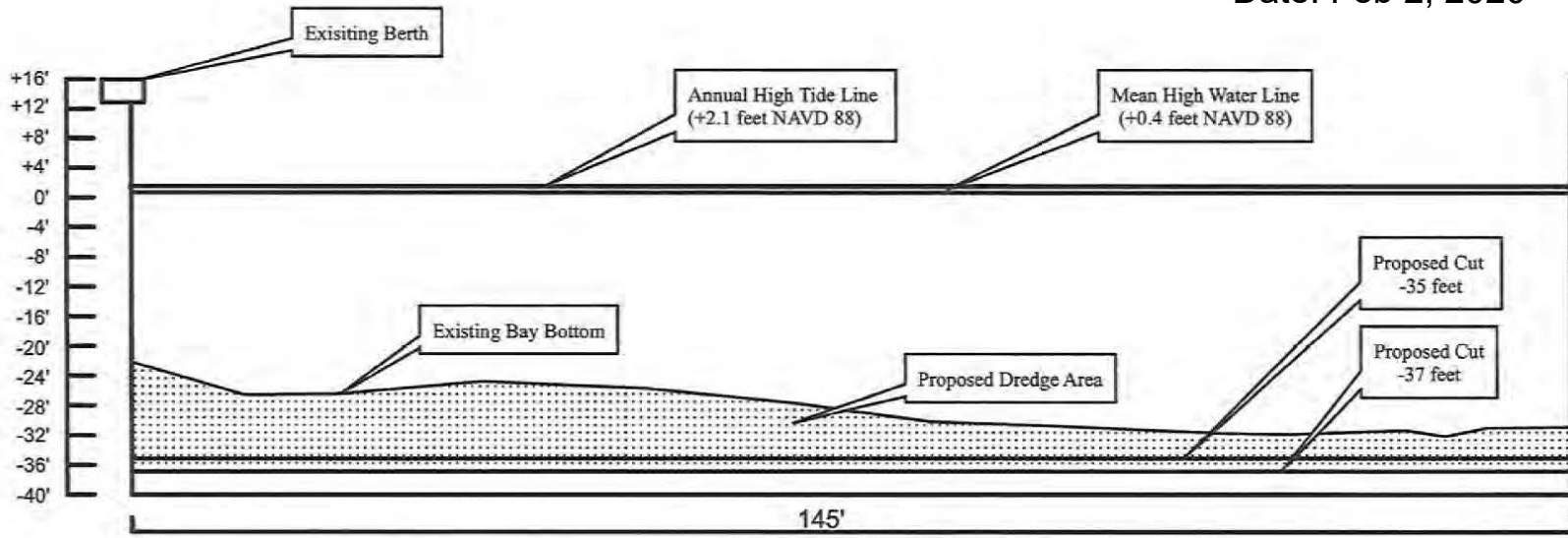
Cross Section A

Cross Section B



Typical Section View A  
 Port Isabel-San Benito Navigation District  
 Port Isabel, Cameron County, Texas

SWG-2008-00408  
 Port Isabel  
 Lat: 26.060337° N  
 Long: -97.213593° W  
 Sheet 3 of 4  
 Date: Feb 2, 2020



- Notes:
- BEI conducted a bathymetric survey on September 24th-26th, 2019.
  - All proposed finish grades are shown in feet, NAVD 88.
  - For planning and permitting uses only, not for construction.
  - Prepared by Belaire Environmental, Inc., December 5, 2019. (AP)

Not To Scale

Port Isabel-San Benito navigation District  
 SWG-2008-00408  
 Port Isabel, Cameron County, Texas

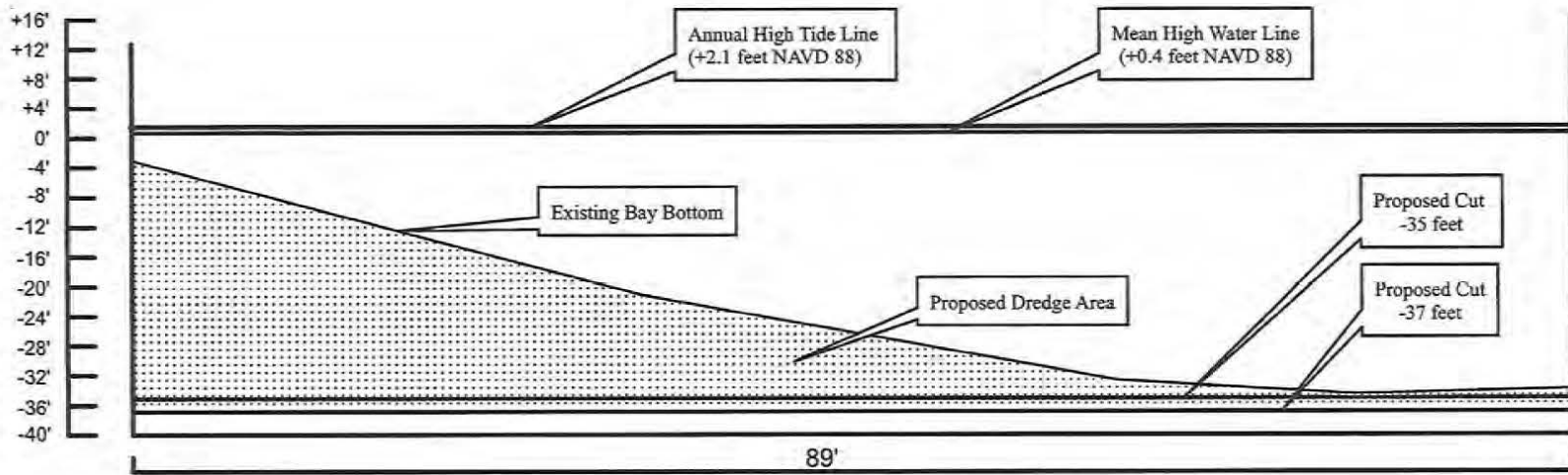


PREPARED BY:  
 BELAIRE ENVIRONMENTAL, INC.  
 PO BOX 741 ROCKPORT, TEXAS 78382  
 December 5, 2019 page \_\_\_ of \_\_\_

JAN 10 2020

SWG-2008-00408  
 Port Isabel  
 Lat: 26.060337° N  
 Long: -97.213593° W  
 Sheet 4 of 4  
 Date: Feb 2, 2020

Typical Section View B  
 Port Isabel-San Benito Navigation District  
 Port Isabel, Cameron County, Texas



- Notes:
- BEI conducted a bathymetric survey on September 24th-26th, 2019.
  - All proposed finish grades are shown in feet, NAVD 88.
  - For planning and permitting uses only, not for construction.
  - Prepared by Belaire Environmental, Inc., December 5, 2019. (AP)

Not To Scale

Port Isabel-San Benito navigation District  
 SWG-2008-00408  
 Port Isabel, Cameron County, Texas



PREPARED BY:  
 BELAIRE ENVIRONMENTAL, INC.  
 PO BOX 741 ROCKPORT, TEXAS 78382  
 December 5, 2019 page \_\_\_ of \_\_\_

JAN 10 2020