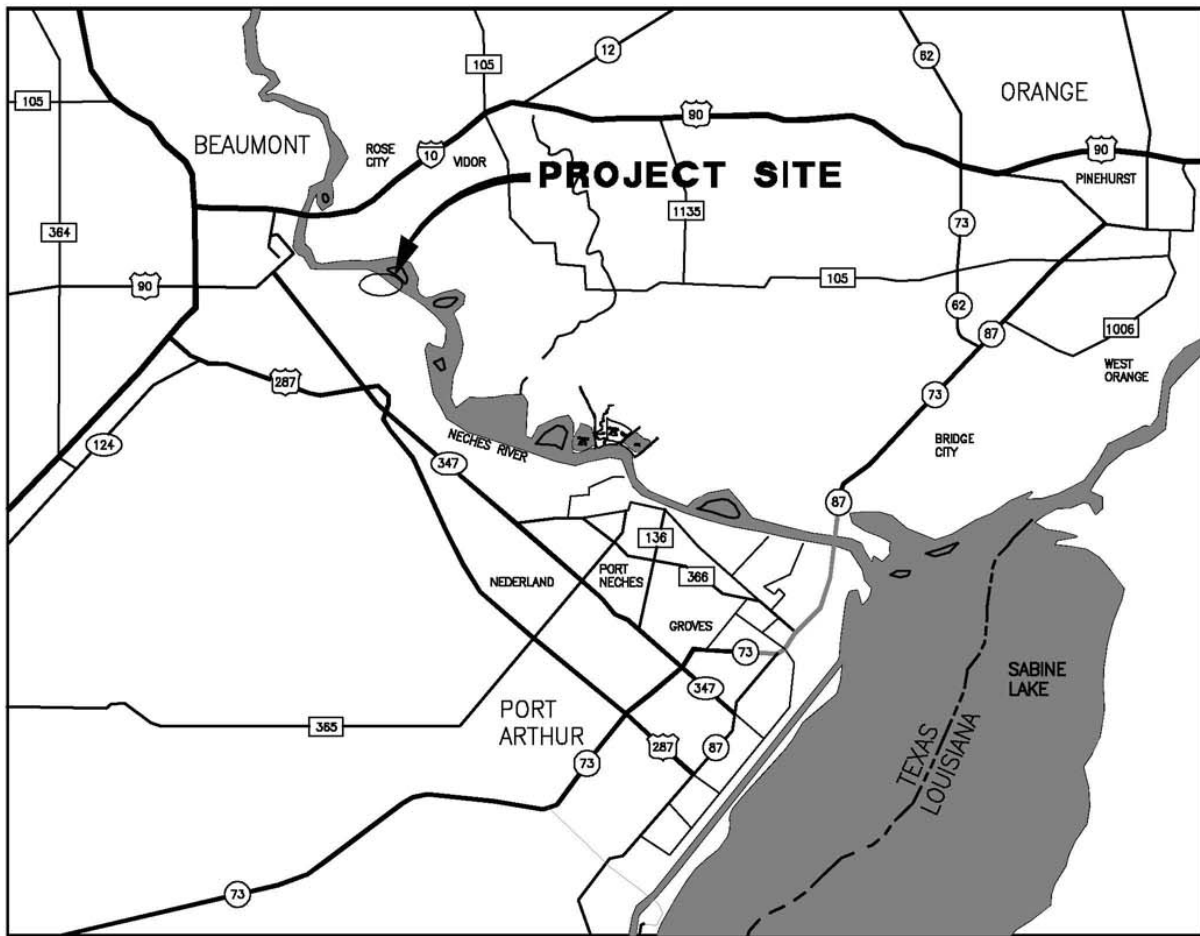
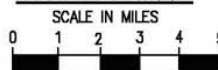




AREA MAP



VICINITY MAP



30.069312° N
94.056756° W

10369-P01



LANIER & ASSOCIATES
CONSULTING ENGINEERS
INCORPORATED

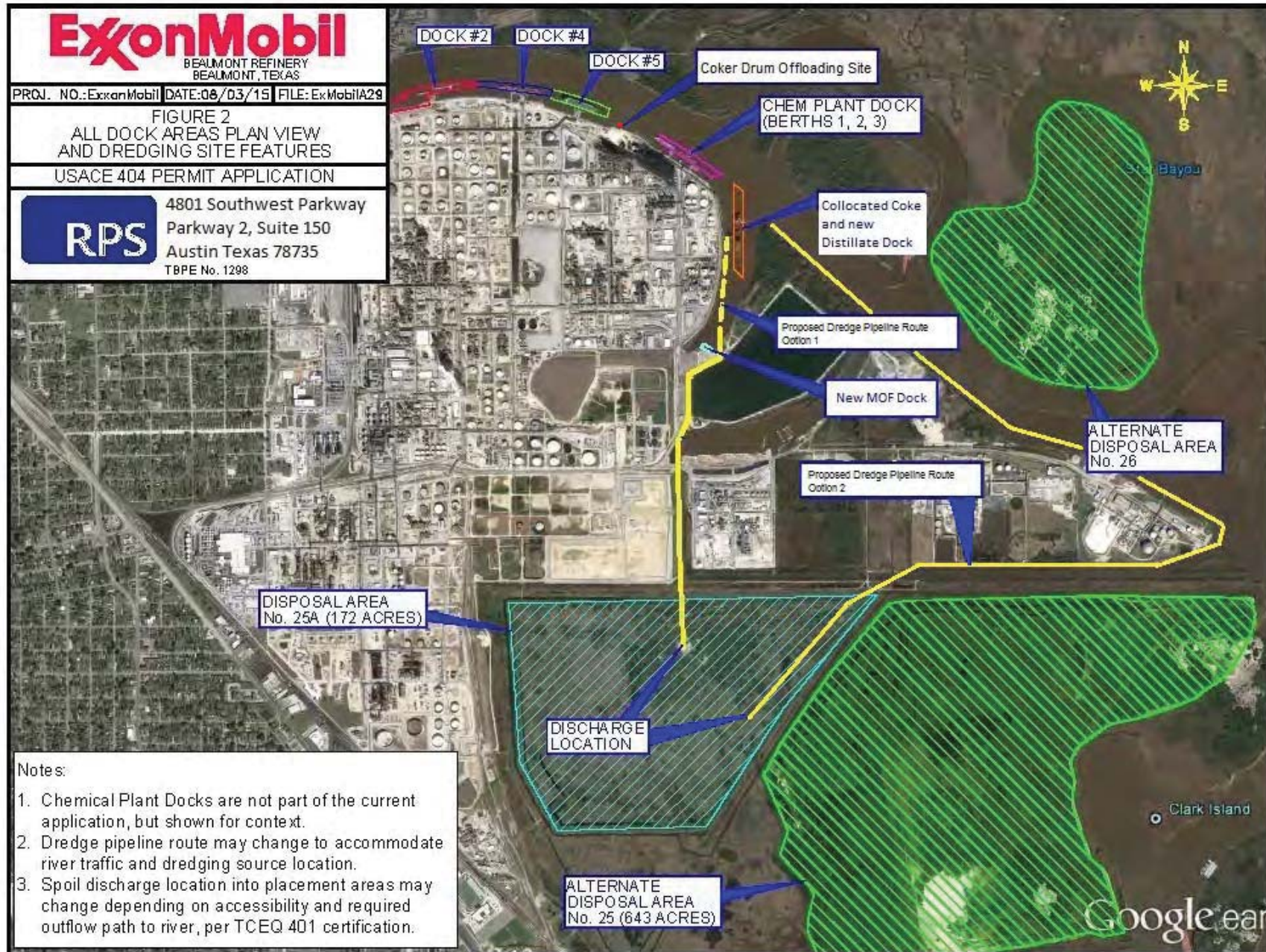
F-2981
NEW ORLEANS, LA · BEAUMONT, TX

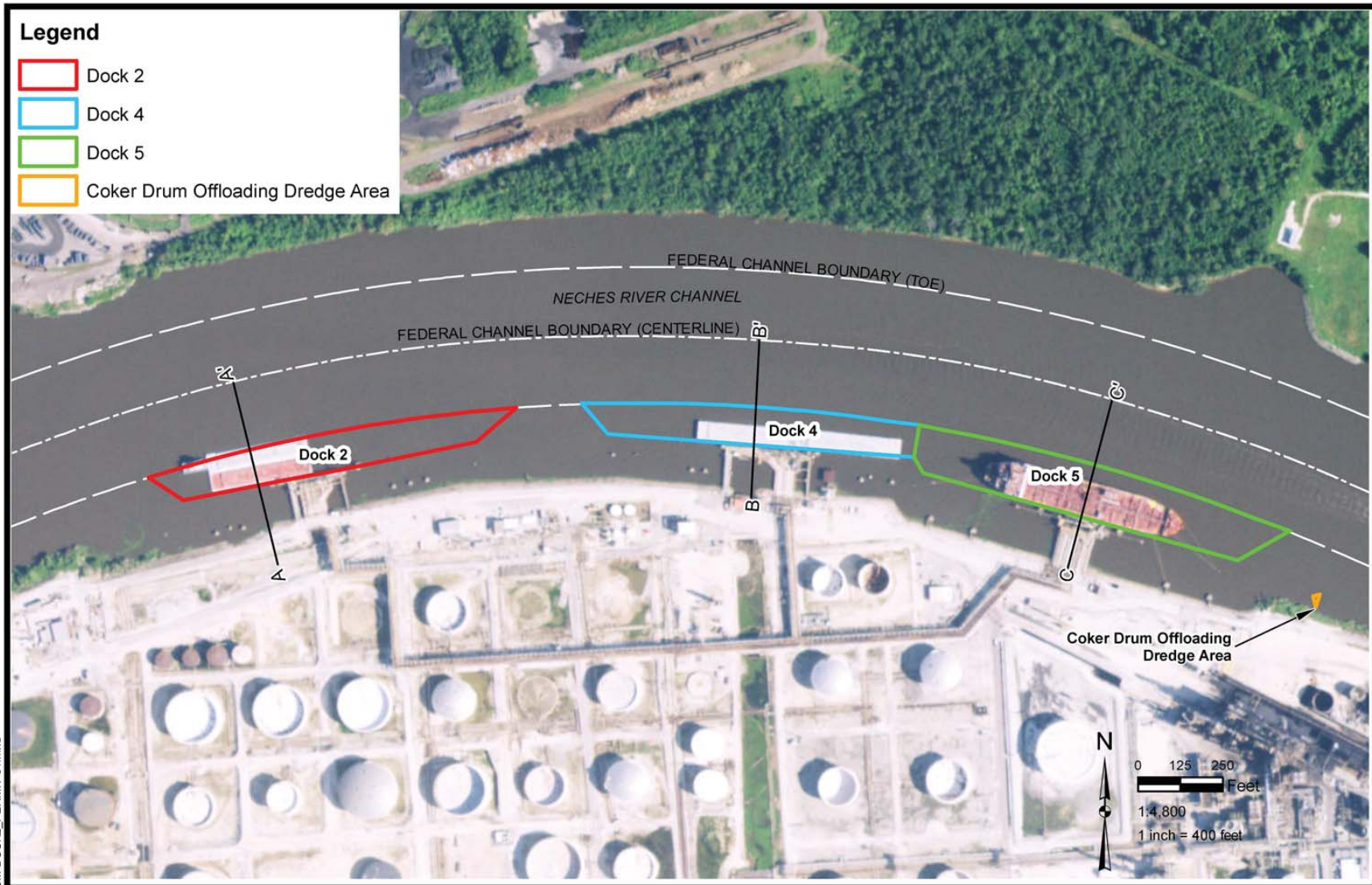
EXXONMOBIL BEAUMONT REFINERY
BEAUMONT TEXAS

Figure 1.
Vicinity Map

DATE JUN. '17
DESIGN BMB
DRAWN TMH
CHECK SCK
CONTRACT 10369
SHEET No.

1 OF 16





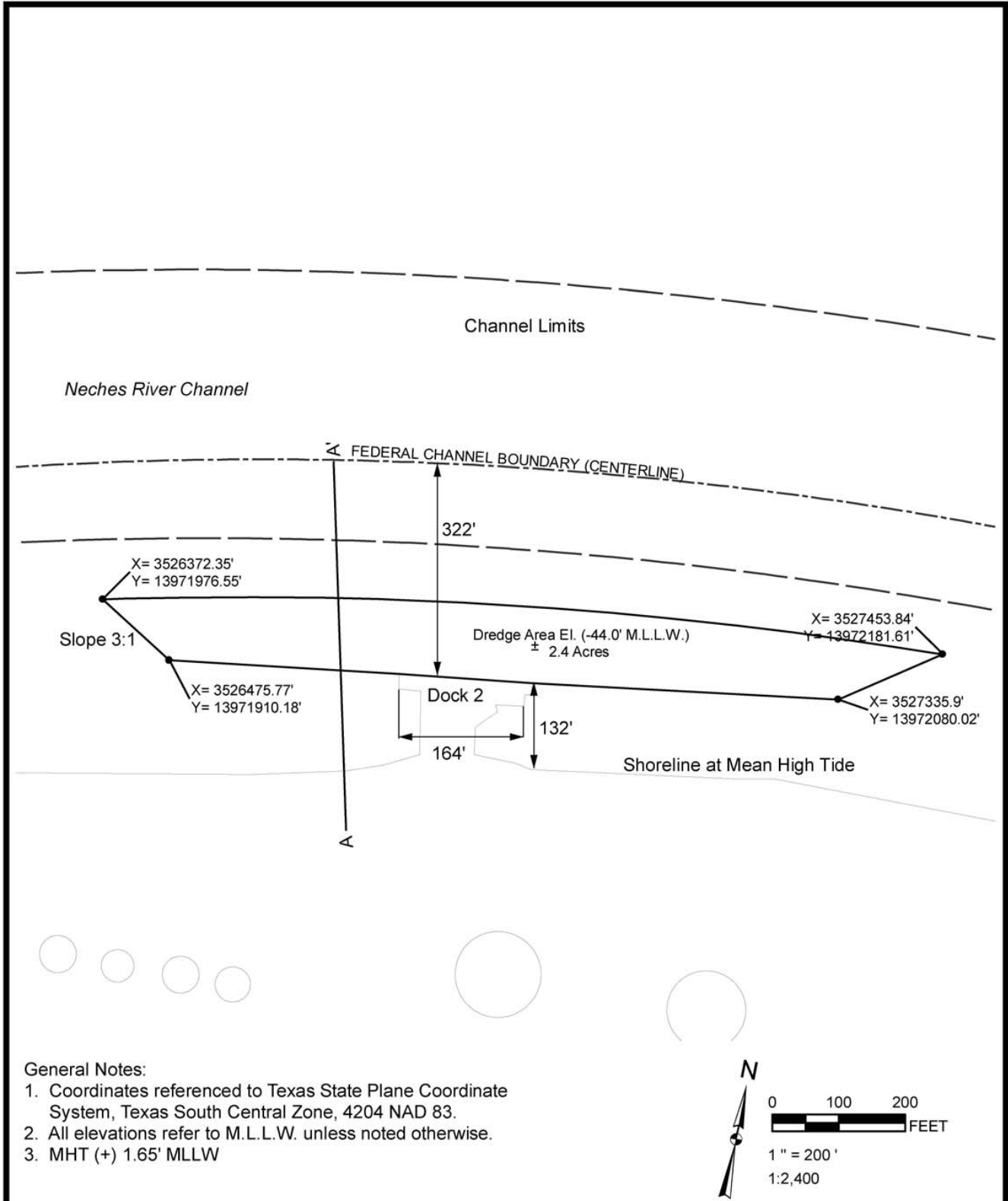
Printed By: lauri on 1/5/2018, 14:23 PM
J:\Prj\ExxonMobil\Dock2_2\XOM-DOCK2_PERMIT-01.mxd



**EXXONMOBIL BEAUMONT REFINERY
BEAUMONT, TEXAS**

Figure 3. Plan View of Dredge Areas for Docks 2, 4, 5, and Coker Drum Offloading Area

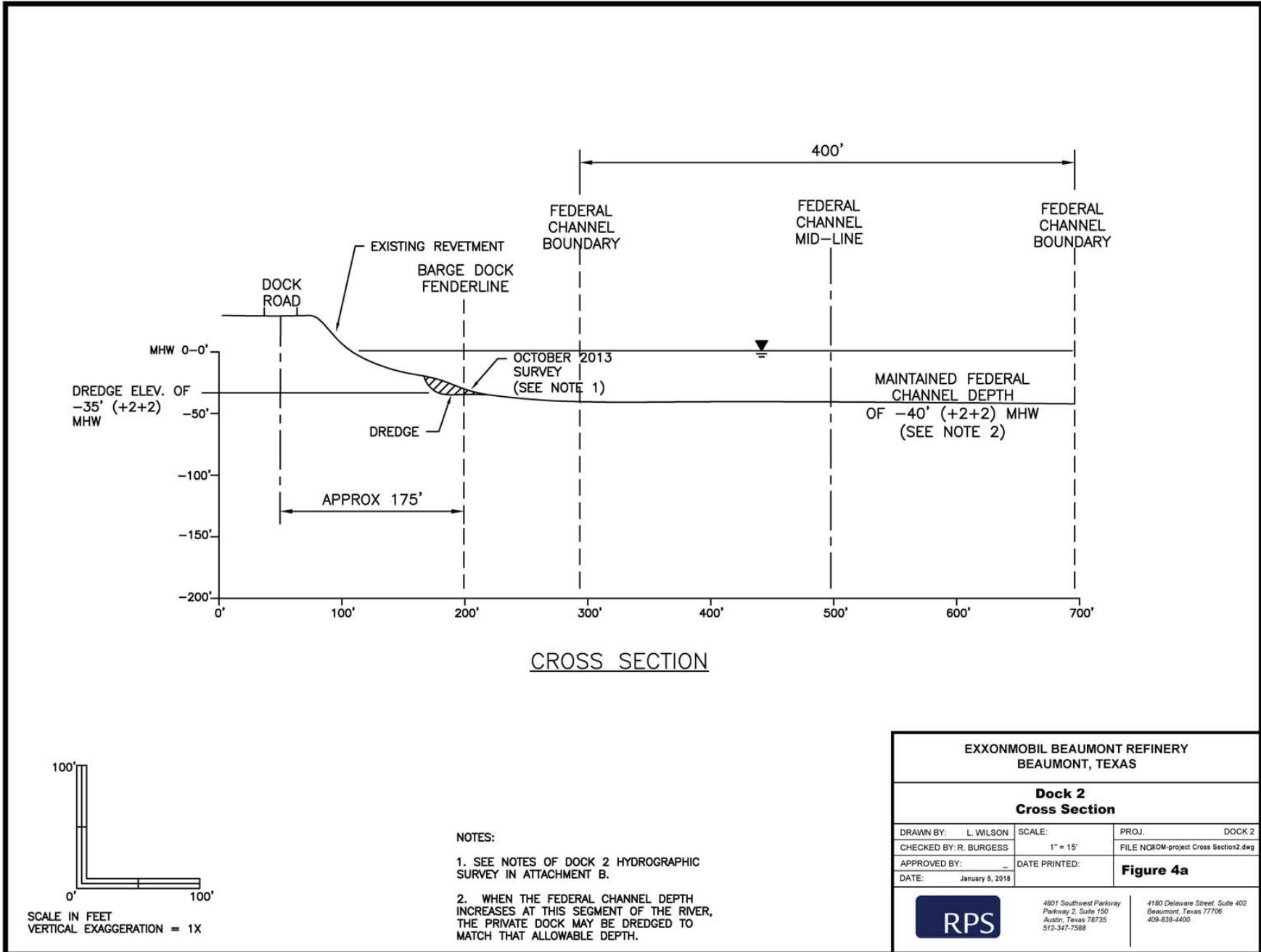
DRAWN BY:	L WILSON
APPROVED BY:	R. BURGESS
PROJECT NO:	DOCK 2
FILE NO.	XOM-DOCK2_PERMIT-01.mxd
DATE:	JANUARY 2018

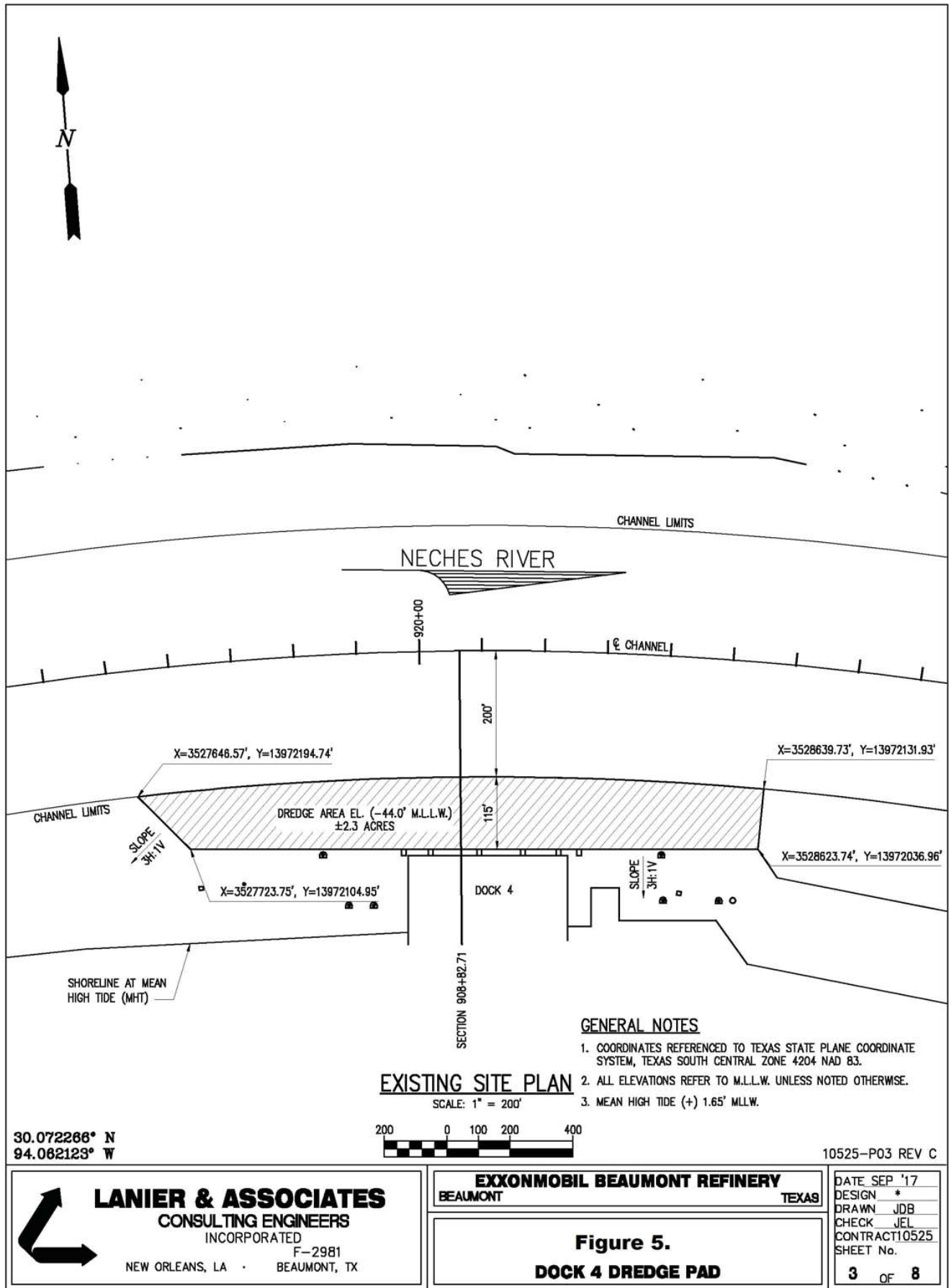


EXXONMOBIL BEAUMONT REFINERY
BEAUMONT, TEXAS

Figure 4
Dock 2 Dredge Pad

DRAWN BY:	L WILSON
APPROVED BY:	R BURGESS
PROJECT NO:	DOCK 2
FILE NO.	Figure 3A.mxd
DATE:	JANUARY 2018





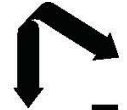
LANIER & ASSOCIATES
CONSULTING ENGINEERS
INCORPORATED
F-2981
NEW ORLEANS, LA · BEAUMONT, TX

EXXONMOBIL BEAUMONT REFINERY
BEAUMONT TEXAS

Figure 5.
DOCK 4 DREDGE PAD

DATE	SEP '17
DESIGN	*
DRAWN	JDB
CHECK	JEL
CONTRACT	10525
SHEET No.	

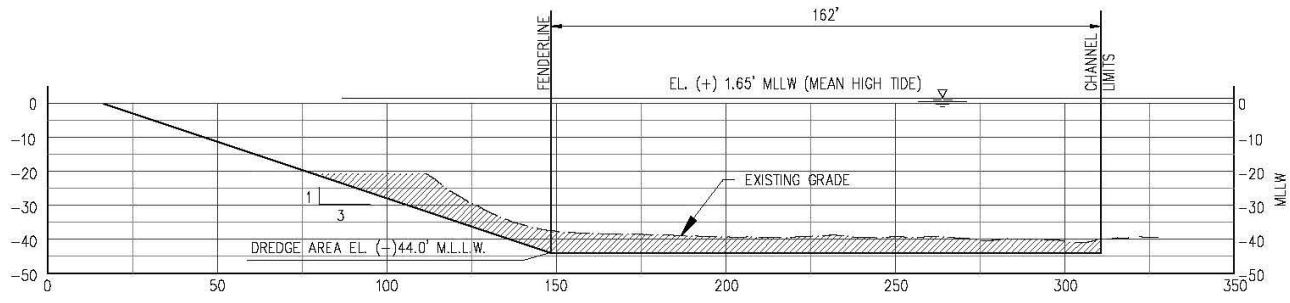
3 OF 8



LANIER & ASSOCIATES
CONSULTING ENGINEERS
INCORPORATED
F-2981
NEW ORLEANS, LA • BEAUMONT, TX

30.072268° N
94.062123° W

CROSS SECTION
SCALE: 1" = 50'



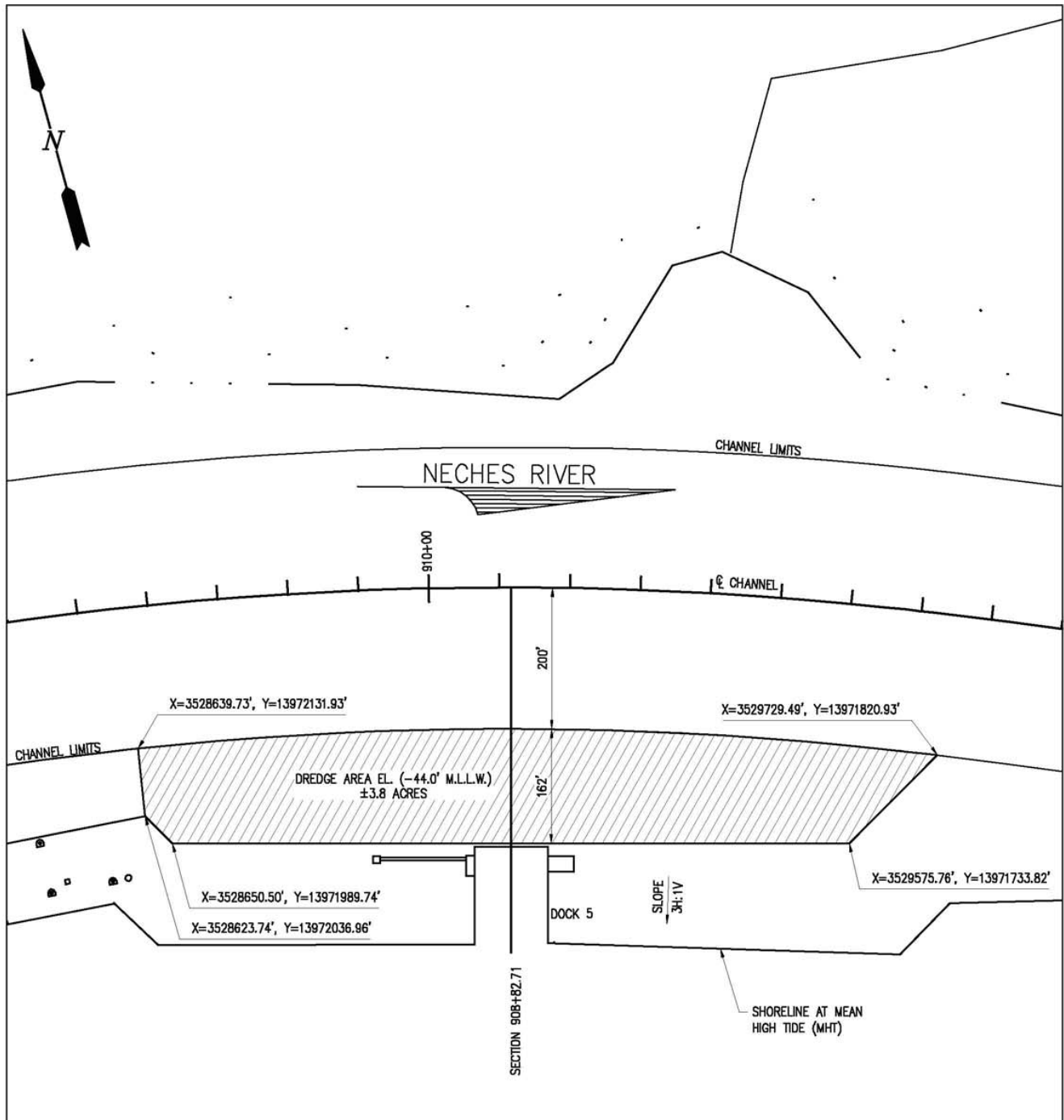
U.S.A.C.E. STA. 908+82.71

EXXONMOBIL BEAUMONT REFINERY
BEAUMONT TEXAS

Figure 5a
Dock 4 Cross Section

10525-P05 REV B

DATE	SEP 17
DESIGN	*
DRAWN	JDB
CHECK	JEL
CONTRACT	10525
SHEET No	
5a	8

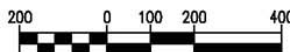


GENERAL NOTES

1. COORDINATES REFERENCED TO TEXAS STATE PLANE COORDINATE SYSTEM, TEXAS SOUTH CENTRAL ZONE 4204 NAD 83.
2. ALL ELEVATIONS REFER TO M.L.L.W. UNLESS NOTED OTHERWISE.
3. MEAN HIGH TIDE = (+) 1.65' MLLW.

EXISTING SITE PLAN

SCALE: 1" = 200'



30.072266° N
94.062123° W

10525-P04 REV C



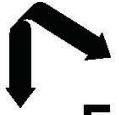
LANIER & ASSOCIATES
CONSULTING ENGINEERS
INCORPORATED
F-2981
NEW ORLEANS, LA · BEAUMONT, TX

EXXONMOBIL BEAUMONT REFINERY
BEAUMONT TEXAS

Figure 6.
Dock 5 Dredge Pad

DATE SEP '17
DESIGN *
DRAWN JDB
CHECK JEL
CONTRACT 10525
SHEET No.

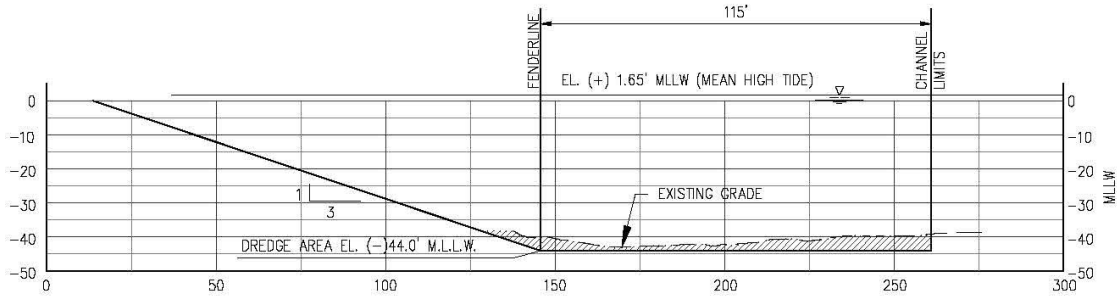
4 OF 8



LANIER & ASSOCIATES
CONSULTING ENGINEERS
INCORPORATED
F-2981
NEW ORLEANS, LA • BEAUMONT, TX

30.072268° N
94.062123° W

CROSS SECTION
SCALE: 1" = 50'



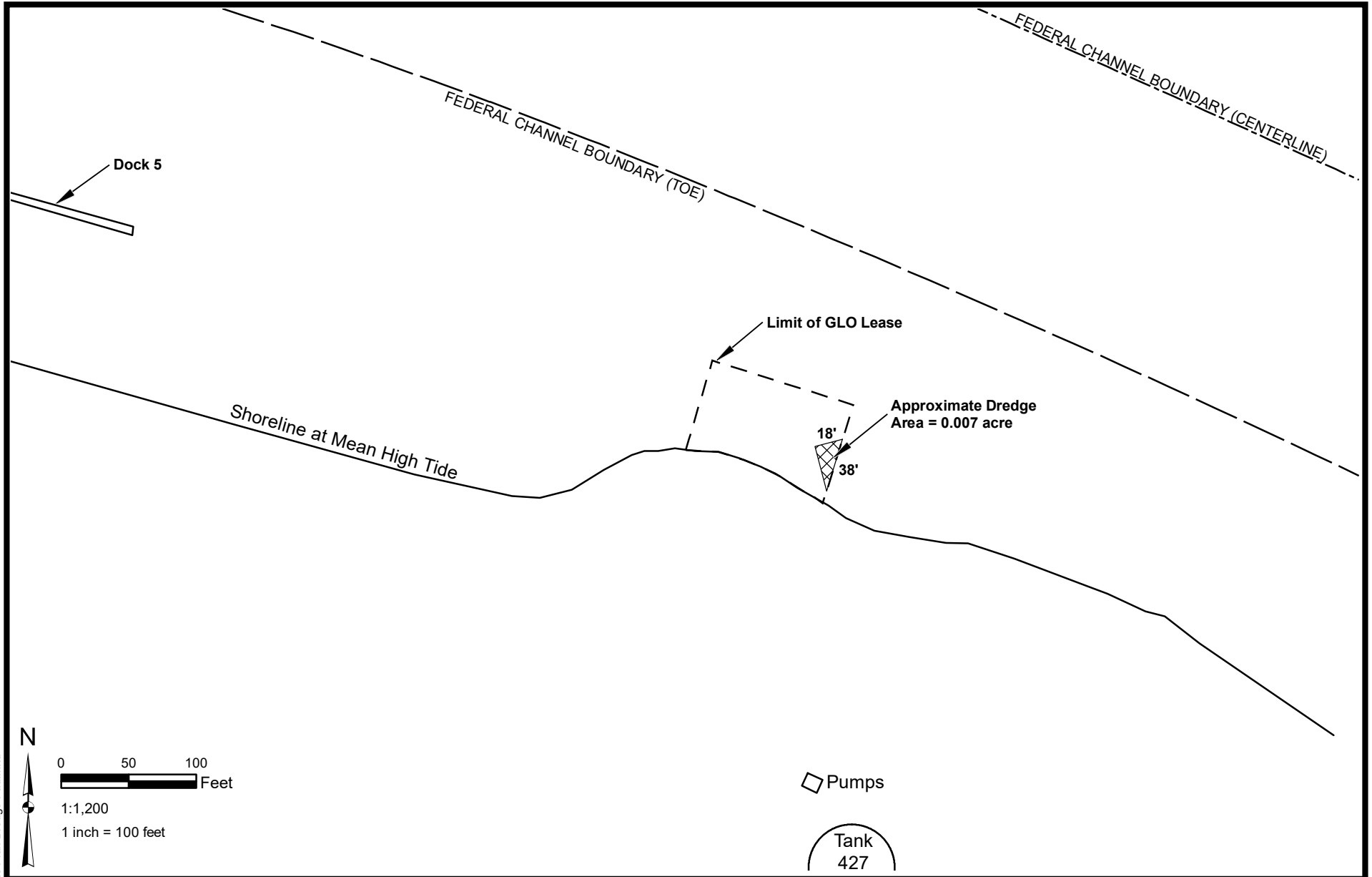
U.S.A.C.E. STA. 919+35.83

EXXONMOBIL BEAUMONT REFINERY
BEAUMONT TEXAS

Figure 6a.
Dock 5 Cross Section

10525-P05 REV B

DATE	SEP 17
DESIGN	*
DRAWN	JDB
CHECK	JEL
CONTRACT	10525
SHEET No	
5b	8



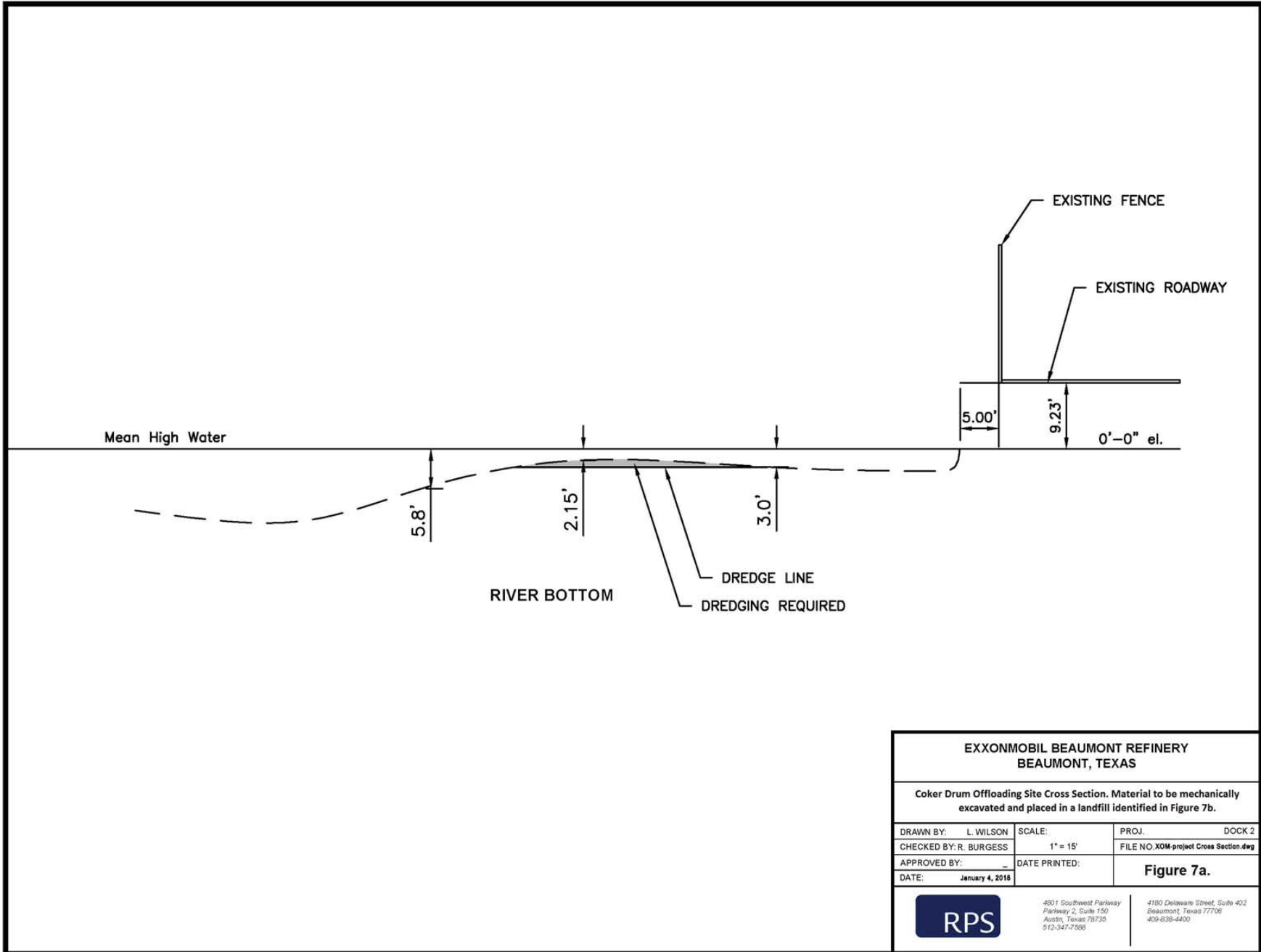
Printed By: lauri on 1/24/2018, 14:41 PM
J:\Prj\ExxonMobil\Dock 2\Site Plan Dredge Pad.mxd



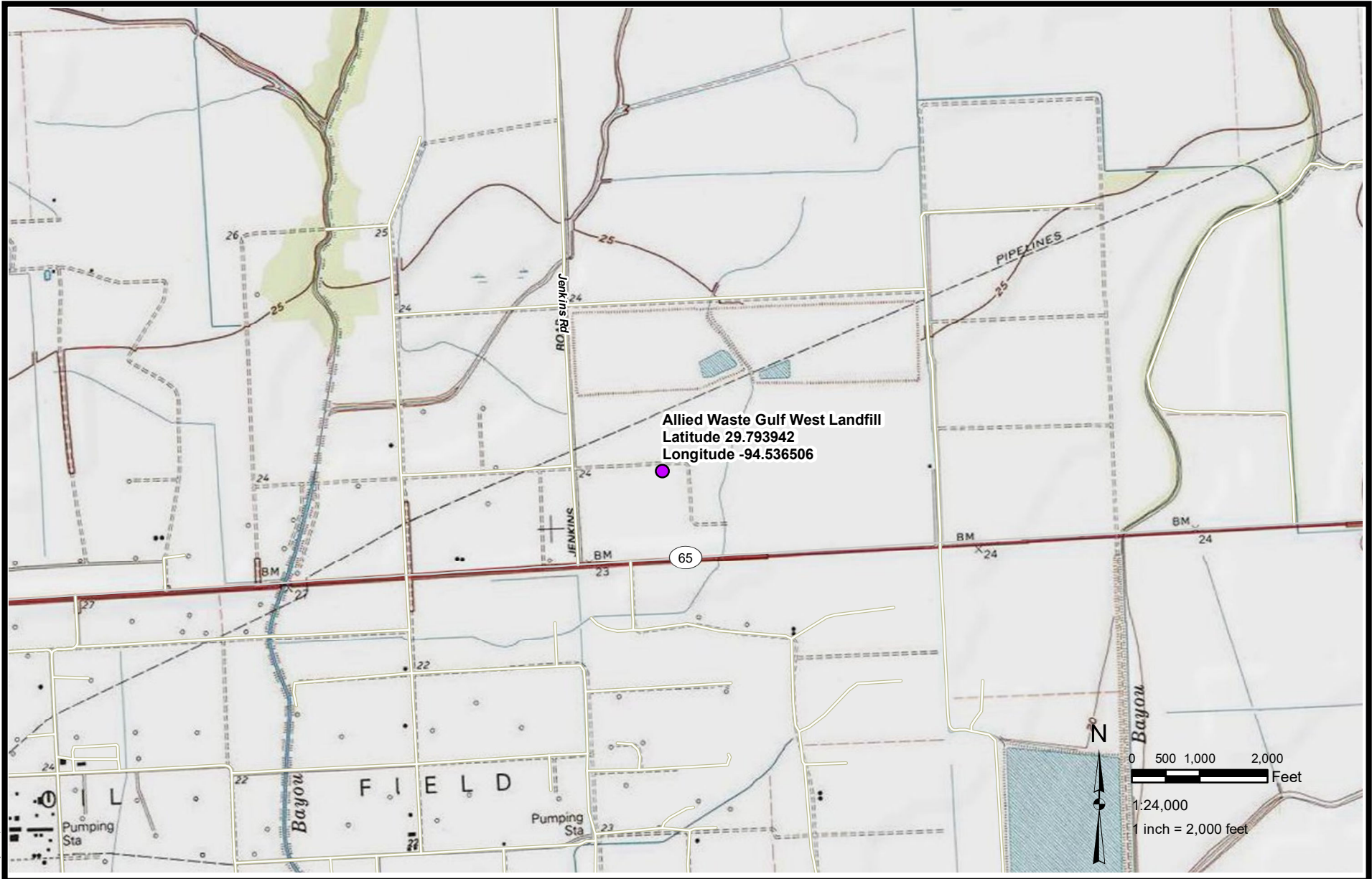
**EXXONMOBIL BEAUMONT REFINERY
BEAUMONT, TEXAS**

**FIGURE 7
COKER DRUM OFFLOADING DREDGE PAD
MATERIAL TO BE MECHANICALLY EXCAVATED AND PLACED IN A LANDFILL IDENTIFIED IN FIGURE 7B**

DRAWN BY:	L WILSON
APPROVED BY:	R. BURGESS
PROJECT NO:	DOCK 2
FILE NO.	Site Plan Dredge Pad.mxd
DATE:	JANUARY 2018



EXXONMOBIL BEAUMONT REFINERY BEAUMONT, TEXAS		
Coker Drum Offloading Site Cross Section. Material to be mechanically excavated and placed in a landfill identified in Figure 7b.		
DRAWN BY: L. WILSON	SCALE: 1" = 15'	PROJ. DOCK 2
CHECKED BY: R. BURGESS		FILE NO. XOM-project Cross Section.dwg
APPROVED BY: -	DATE PRINTED:	Figure 7a.
DATE: January 4, 2016		
RPS	4801 Southwest Parkway Parkway 2, Suite 150 Austin, Texas 78735 512-347-7988	4180 Delaware Street, Suite 402 Beaumont, Texas 77706 409-638-4400



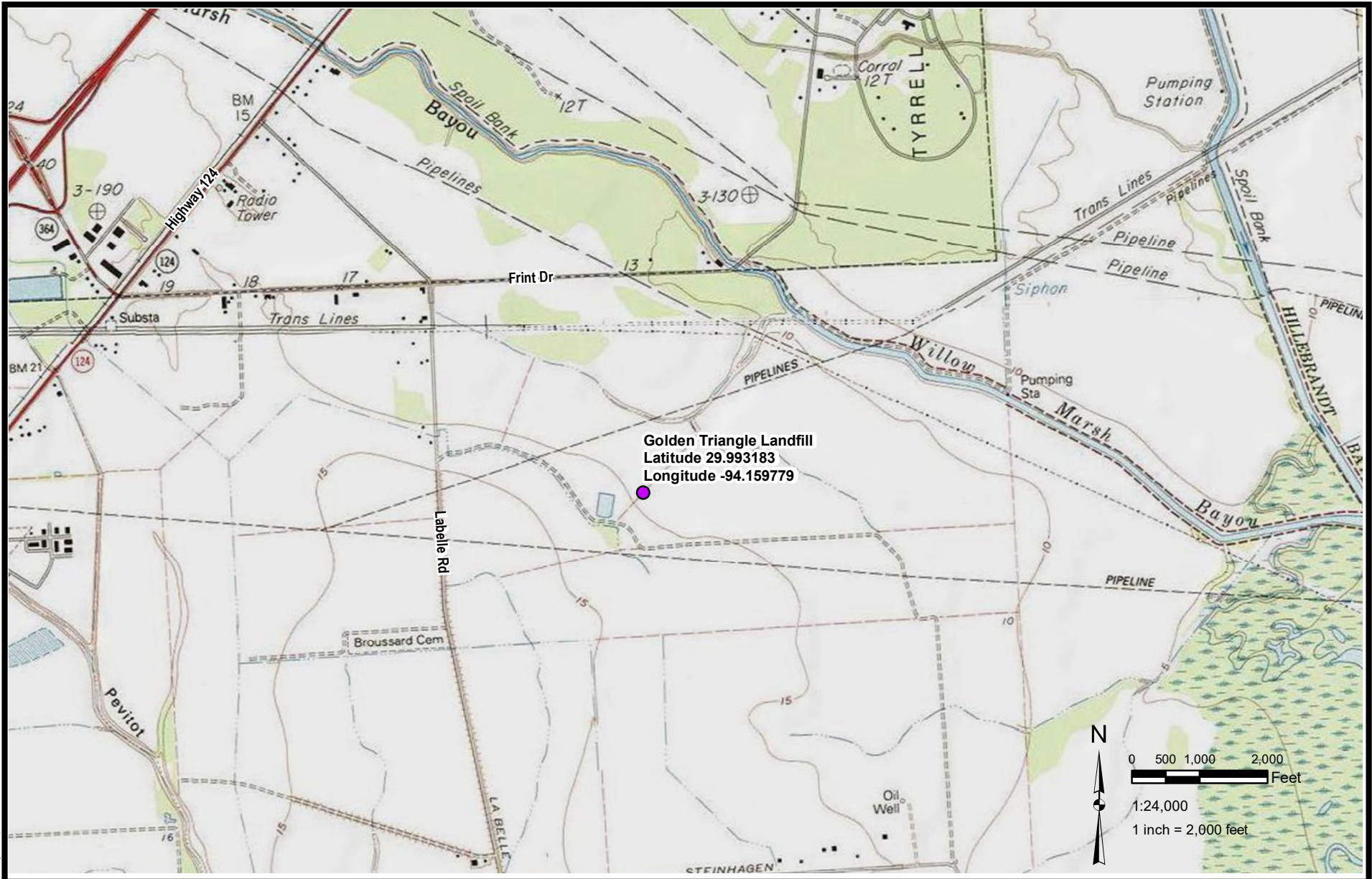
Printed By: lauri on 1/11/2018, 15:18 PM
J:\Prj\ExxonMobil\Dock 2\Vicinity Map 7c.mxd



**EXXONMOBIL BEAUMONT REFINERY
BEAUMONT, TEXAS**

**FIGURE 7C
ALLIED WASTE GULF WEST LANDFILL VICINITY MAP**

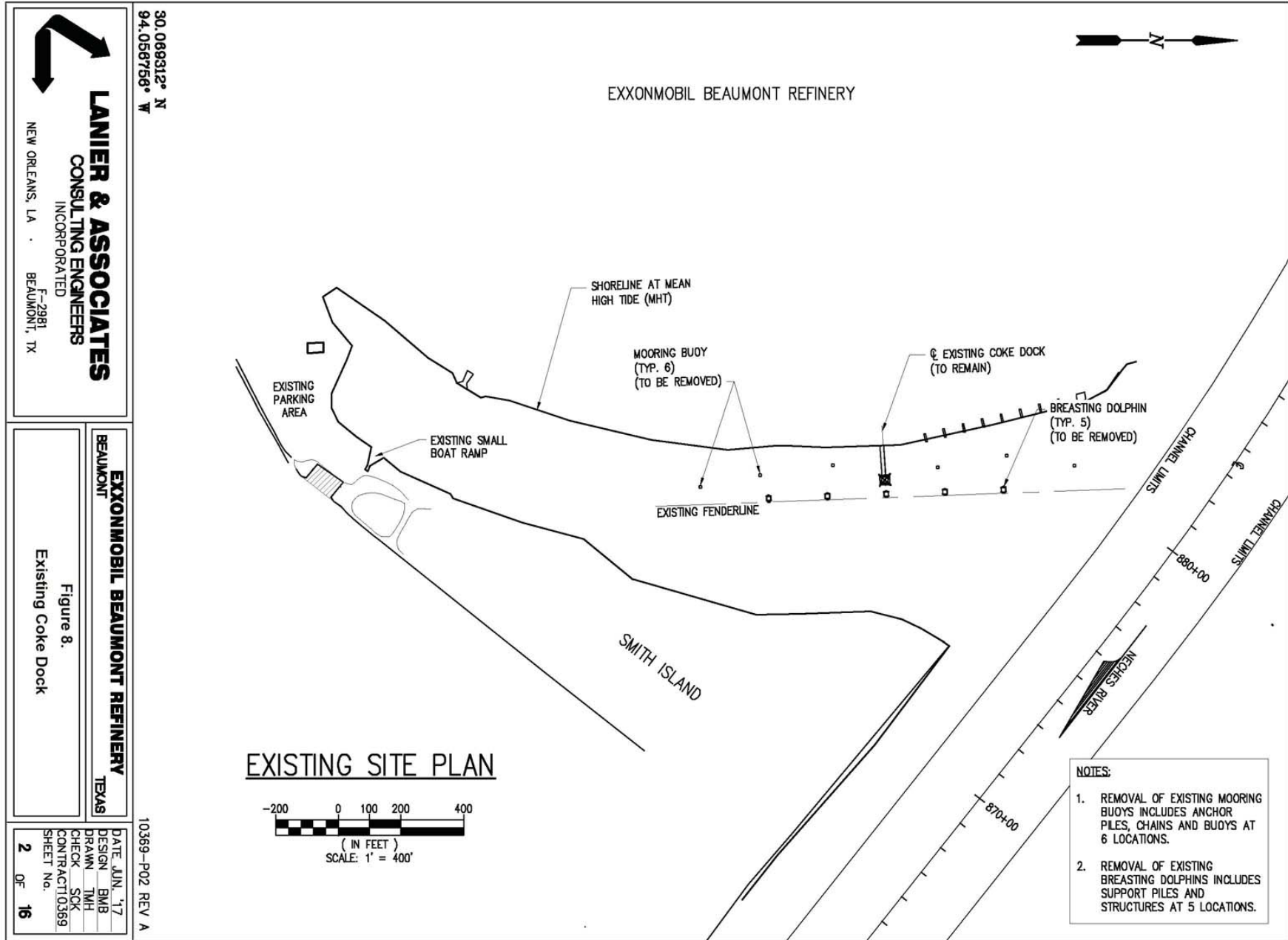
DRAWN BY:	L WILSON
APPROVED BY:	R. BURGESS
PROJECT NO:	DOCK 2
FILE NO.	Vicinity Map 7c.mxd
DATE:	JANUARY 2018



**EXXONMOBIL BEAUMONT REFINERY
BEAUMONT, TEXAS**

**FIGURE 7D
GOLDEN TRIANGLE LANDFILL VICINTY MAP**

DRAWN BY:	L WILSON
APPROVED BY:	R. BURGESS
PROJECT NO:	DOCK 2
FILE NO.	Vicinity Map 7d.mxd
DATE:	JANUARY 2018



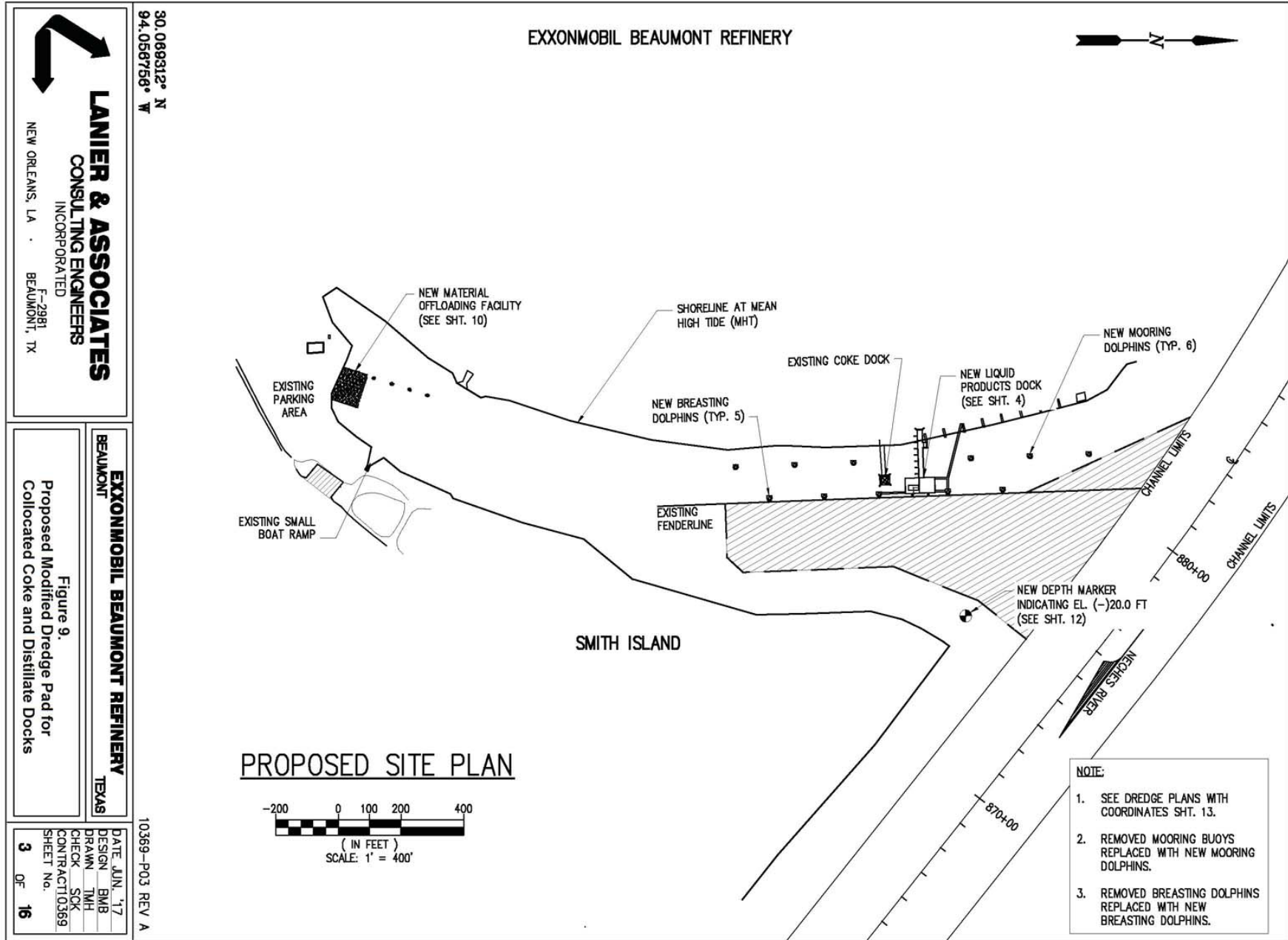
LANIER & ASSOCIATES
CONSULTING ENGINEERS
INCORPORATED
NEW ORLEANS, LA • BEAUMONT, TX

30.089312° N
94.056756° W

EXXONMOBIL BEAUMONT REFINERY
TEXAS
BEAUMONT
Figure 8.
Existing Coke Dock

DATE JUN. '17
DESIGN BMB
DRAWN TMH
CHECK SKK
CONTRACT 0369
SHEET No. **2** OF **16**

10369-P02 REV A



LANIER & ASSOCIATES
CONSULTING ENGINEERS
INCORPORATED
F-2981
NEW ORLEANS, LA · BEAUMONT, TX

30.089312° N
94.056756° W

EXXONMOBIL BEAUMONT REFINERY
BEAUMONT TEXAS

Figure 9.
Proposed Modified Dredge Pad for
Collocated Coke and Distillate Docks

10369-P03 REV A

DATE	JUN '17
DESIGN	BMB
DRAWN	TMH
CHECK	SCK
CONTRACT	0369
SHEET No.	3 OF 16

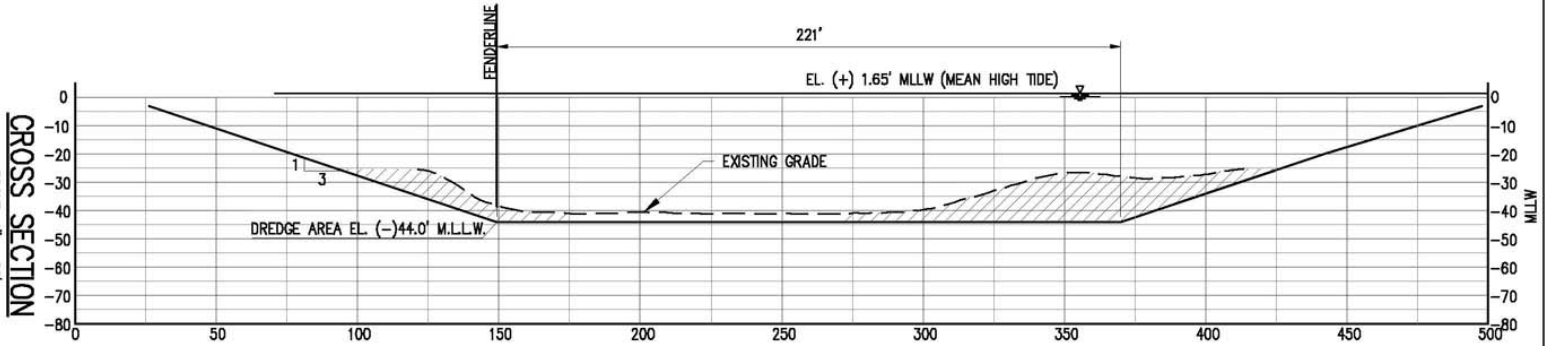


LANIER & ASSOCIATES
CONSULTING ENGINEERS
INCORPORATED
F--2981
NEW ORLEANS, LA · BEAUMONT, TX

30.072268° N
94.082128° W

SCALE: 1" = 60'

CROSS SECTION



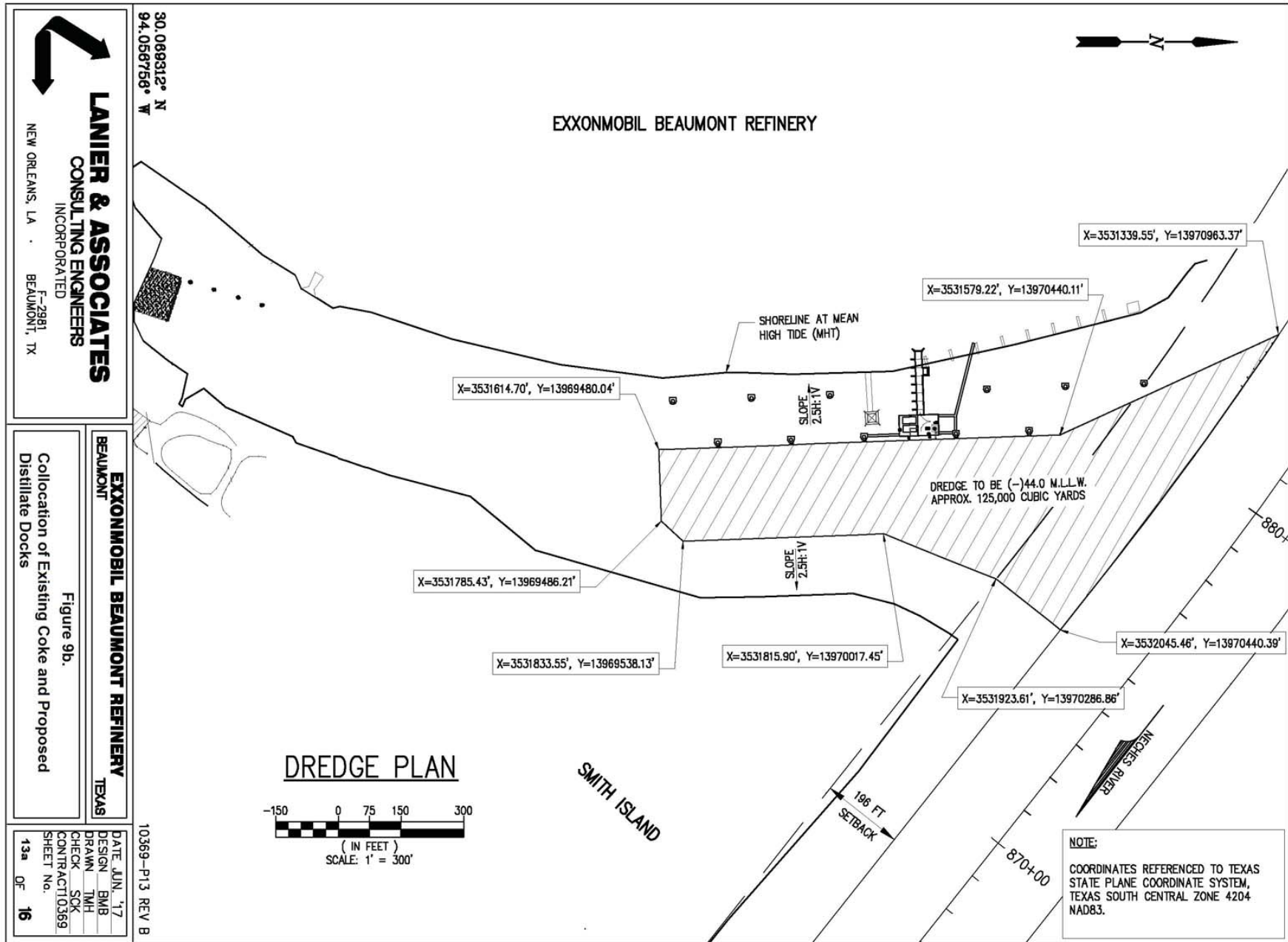
RANGE 1

EXXONMOBIL BEAUMONT REFINERY
BEAUMONT TEXAS

Figure 9a.
Proposed Cross Section Modification
of Existing Coke Dock Dredge Pad

10525--P07 REV A

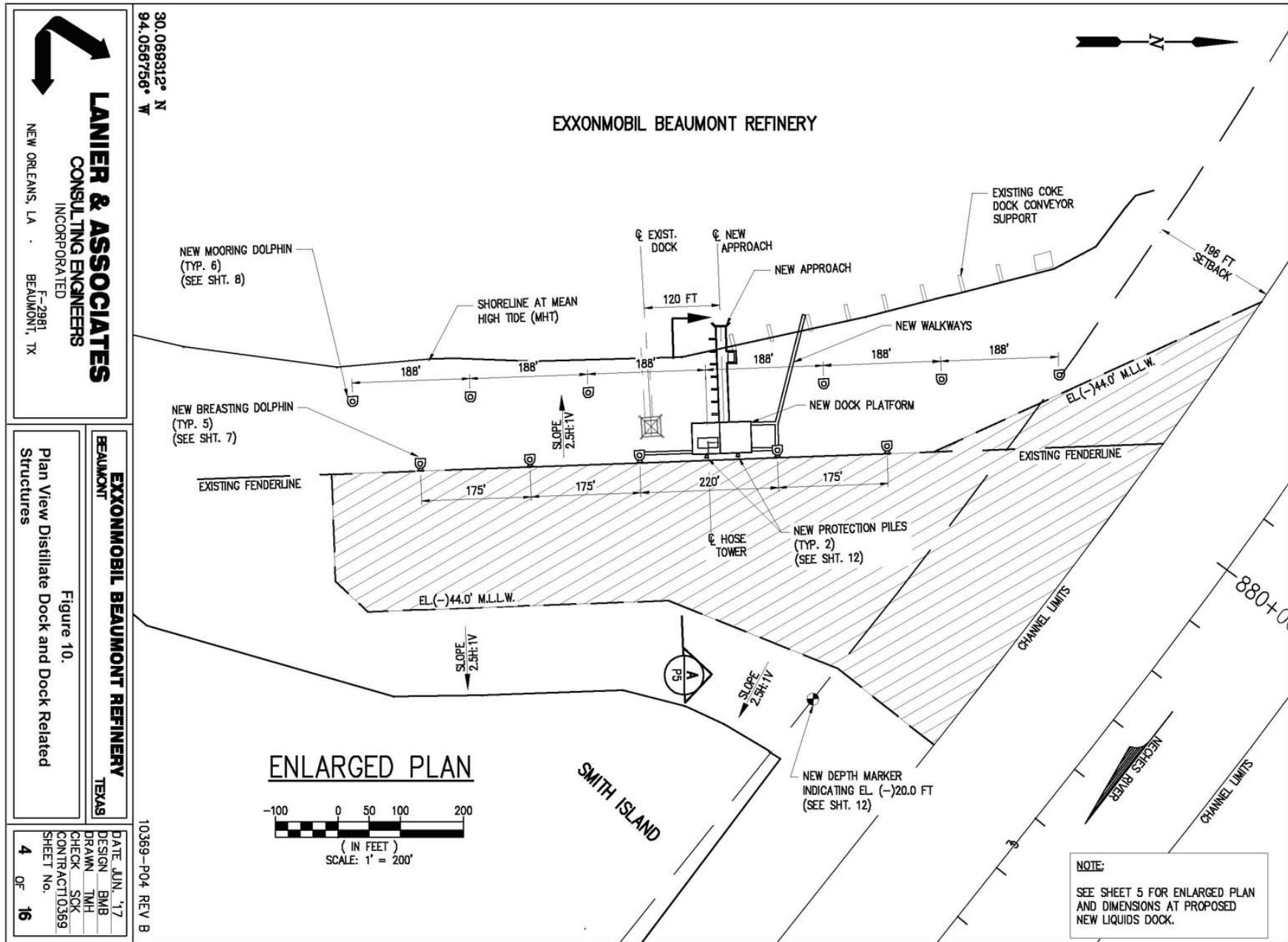
DATE	SEP '17
DESIGN	*
DRAWN	JDB
CHECK	JEL
CONTRACT	10525
SHEET No.	
	7 OF 8



LANIER & ASSOCIATES
CONSULTING ENGINEERS
INCORPORATED
NEW ORLEANS, LA · BEAUMONT, TX

EXXONMOBIL BEAUMONT REFINERY
TEXAS
Beaumont
Distillate Docks
Figure 9b.

DATE JUN '17
DESIGN BMB
DRAWN TMH
CHECK SCK
CONTRACT 0369
SHEET No. 13a OF 16



LANIER & ASSOCIATES
CONSULTING ENGINEERS
INCORPORATED
NEW ORLEANS, LA. BEAUMONT, TX

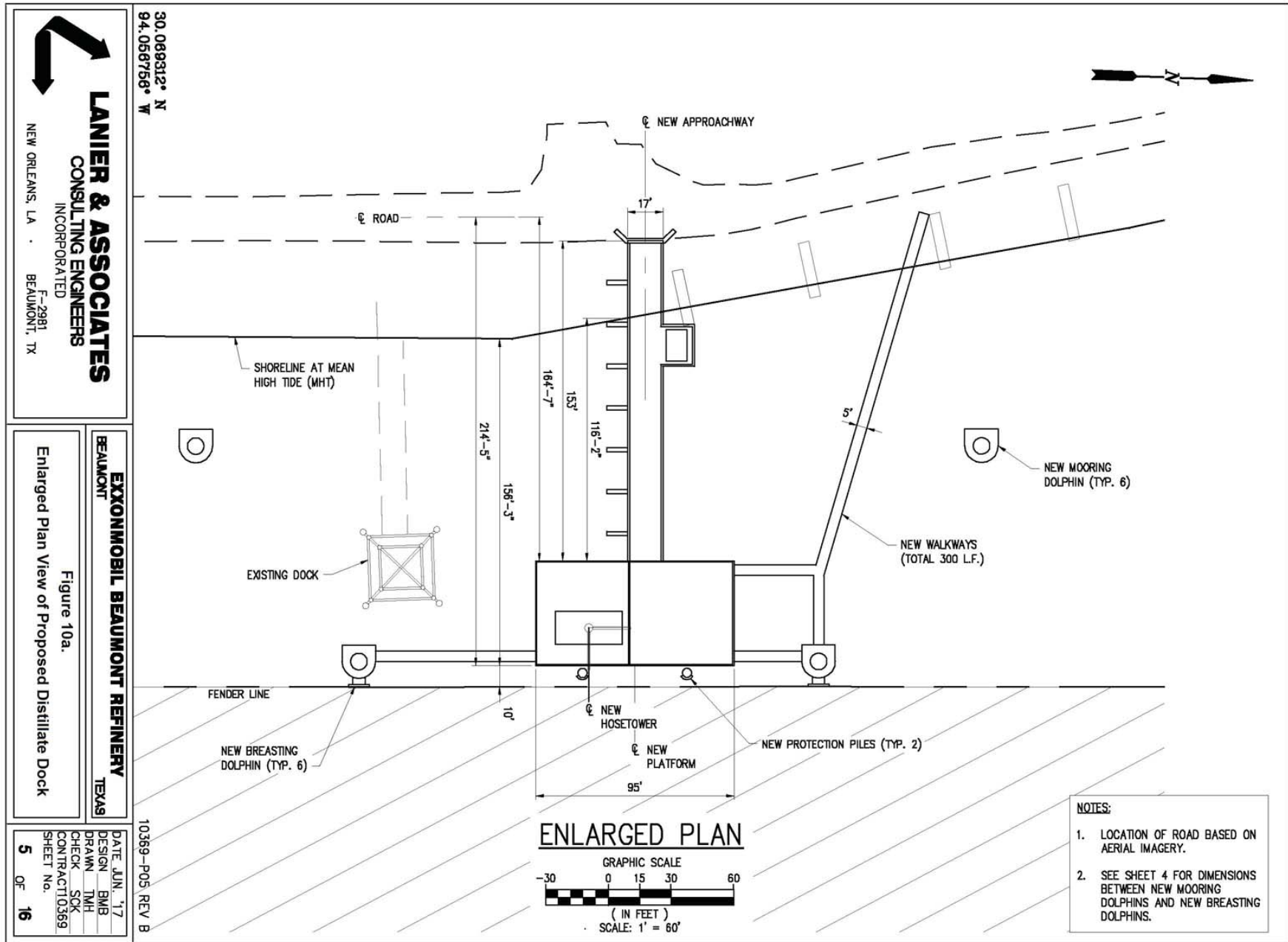
30.089312° N
94.056756° W

EXXONMOBIL BEAUMONT REFINERY
TEXAS
Plan View Distillate Dock and Dock Related Structures
Figure 10.

ENLARGED PLAN
-100 0 50 100 200
(IN FEET)
SCALE: 1" = 200'

NOTE:
SEE SHEET 5 FOR ENLARGED PLAN AND DIMENSIONS AT PROPOSED NEW LIQUIDS DOCK.

10359-P04 REV B
DATE JUN. '17
DESIGN BMB
DRAWN TMH
CHECK SKK
CONTRACT 0369
SHEET No. 4 OF 16



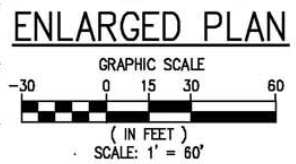

LANIER & ASSOCIATES
 CONSULTING ENGINEERS
 INCORPORATED
 F-2981
 NEW ORLEANS, LA · BEAUMONT, TX

30.089312° N
94.06756° W

EXXONMOBIL BEAUMONT REFINERY
 BEAUMONT TEXAS
 Figure 10a.
 Enlarged Plan View of Proposed Distillate Dock

DATE JUN '17
 DESIGN BMB
 DRAWN TMH
 CHECK SCK
 CONTRACT 10369
 SHEET No. **5** OF **16**

10369-POS, REV. B

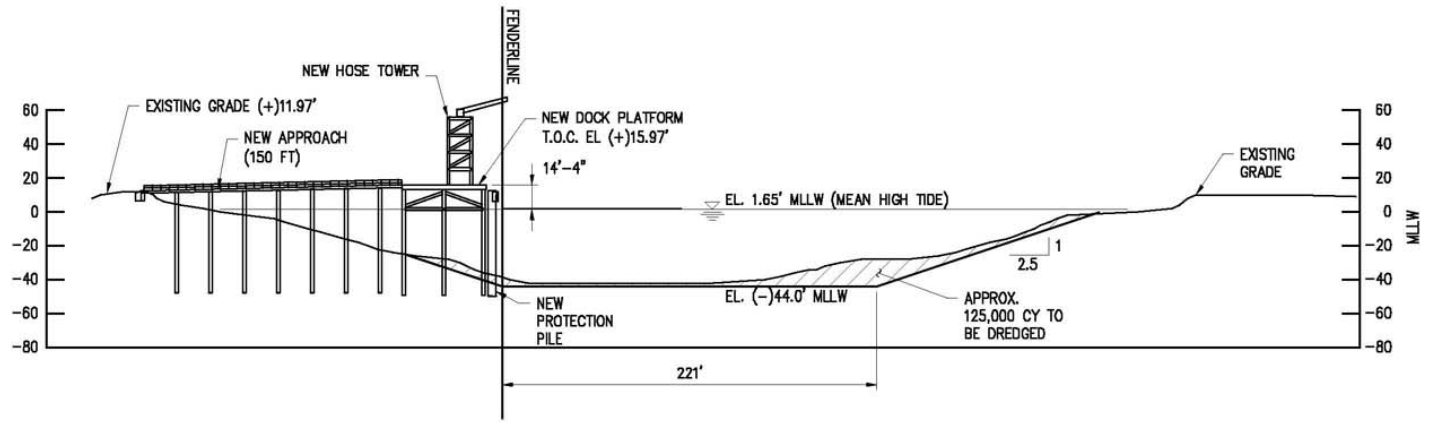


- NOTES:**
1. LOCATION OF ROAD BASED ON AERIAL IMAGERY.
 2. SEE SHEET 4 FOR DIMENSIONS BETWEEN NEW MOORING DOLPHINS AND NEW BREASTING DOLPHINS.

LANIER & ASSOCIATES
CONSULTING ENGINEERS
INCORPORATED
F-2981
NEW ORLEANS, LA · BEAUMONT, TX

30.089312° N
94.056756° W

NOTE:
ELEVATIONS BASED ON MLLW DATUM
UNLESS NOTED OTHERWISE.
MEAN HIGH TIDE = (+) 1.65'
MEAN LOWER LOW TIDE = (-) 1.5' MLLW



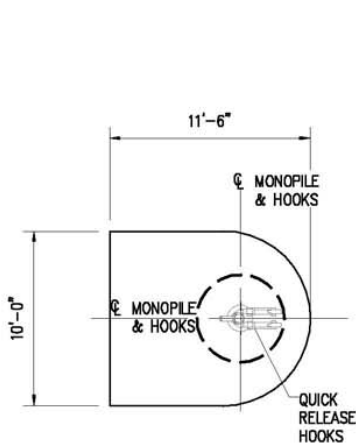
TYPICAL CROSS-SECTION
SCALE: 1" = 100'



EXXONMOBIL BEAUMONT REFINERY
TEXAS
Distillate Dock Typical Cross Section
Figure 10b.

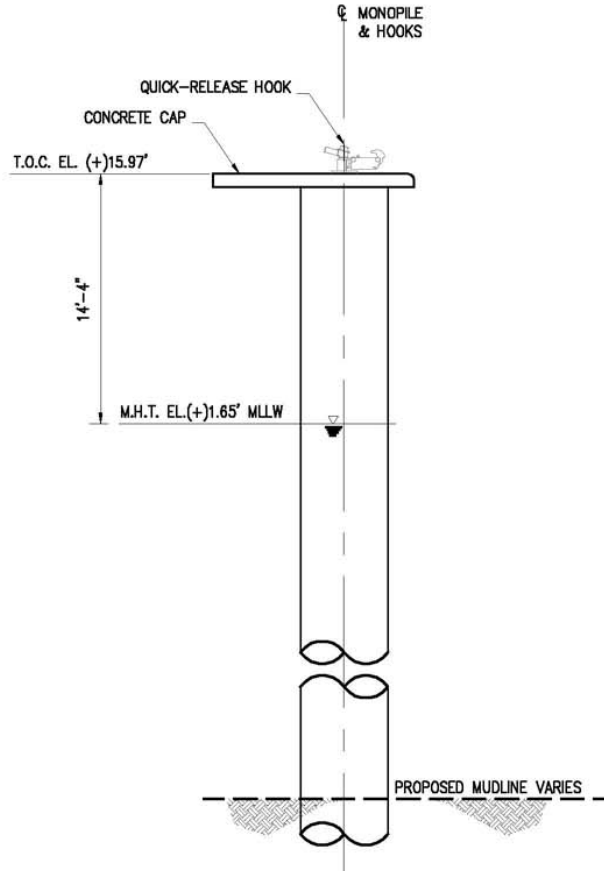
DATE JUN '17
DESIGN BMB
DRAWN TMH
CHECK SCK
CONTRACT 0369
SHEET No.
6 OF **16**

10369-P06 REV B



MOORING DOLPHIN PLAN

SCALE: 1" = 10' (6 REQ'D)



MOORING DOLPHIN ELEVATION

SCALE: 1" = 10'

NOTE:

ELEVATIONS BASED ON MLLW DATUM
UNLESS NOTED OTHERWISE.

MEAN HIGH TIDE = (+) 1.65'

MEAN LOWER LOW TIDE = (-) 1.5' MLLW



30.089312° N
94.058758° W

10369-P08 REV A



LANIER & ASSOCIATES
CONSULTING ENGINEERS
INCORPORATED

F-2981
NEW ORLEANS, LA · BEAUMONT, TX

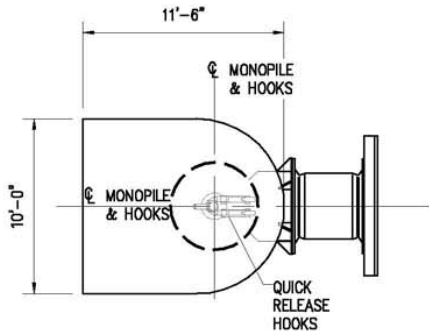
EXXONMOBIL BEAUMONT REFINERY
BEAUMONT TEXAS

Figure 10c.

Proposed Mooring Dolphin

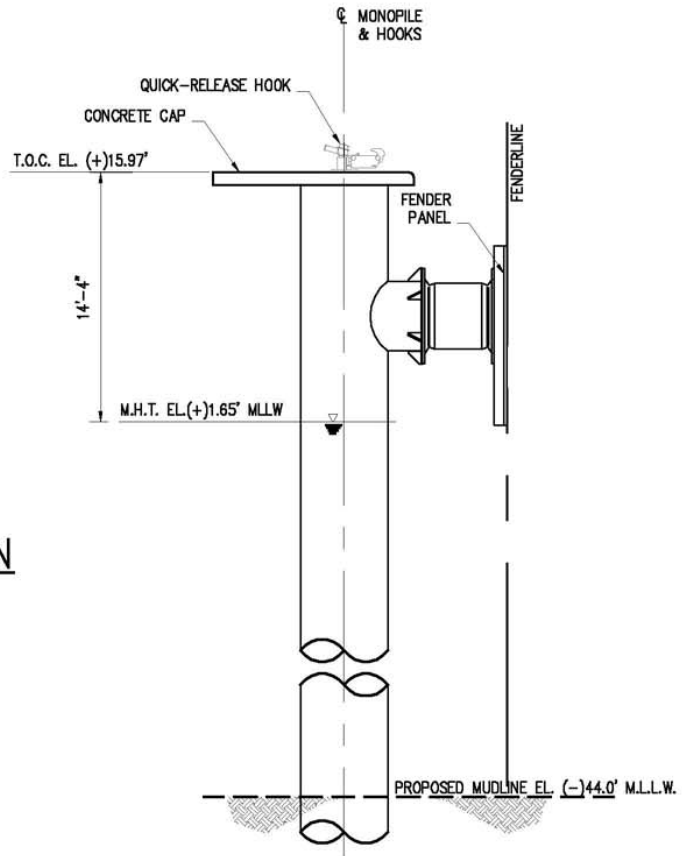
DATE JUN. '17
DESIGN BMB
DRAWN TMH
CHECK SCK
CONTRACT 10369
SHEET No.

8 OF 16



BREASTING DOLPHIN PLAN

SCALE: 1" = 10' (5 REQUIRED)



BREASTING DOLPHIN ELEVATION

SCALE: 1" = 10'

NOTE:

ELEVATIONS BASED ON MLLW DATUM
UNLESS NOTED OTHERWISE.

MEAN HIGH TIDE = (+) 1.65'

MEAN LOWER LOW TIDE = (-) 1.5' MLLW



30.089312° N
94.058758° W

10369-P07 REV A



LANIER & ASSOCIATES
CONSULTING ENGINEERS
INCORPORATED

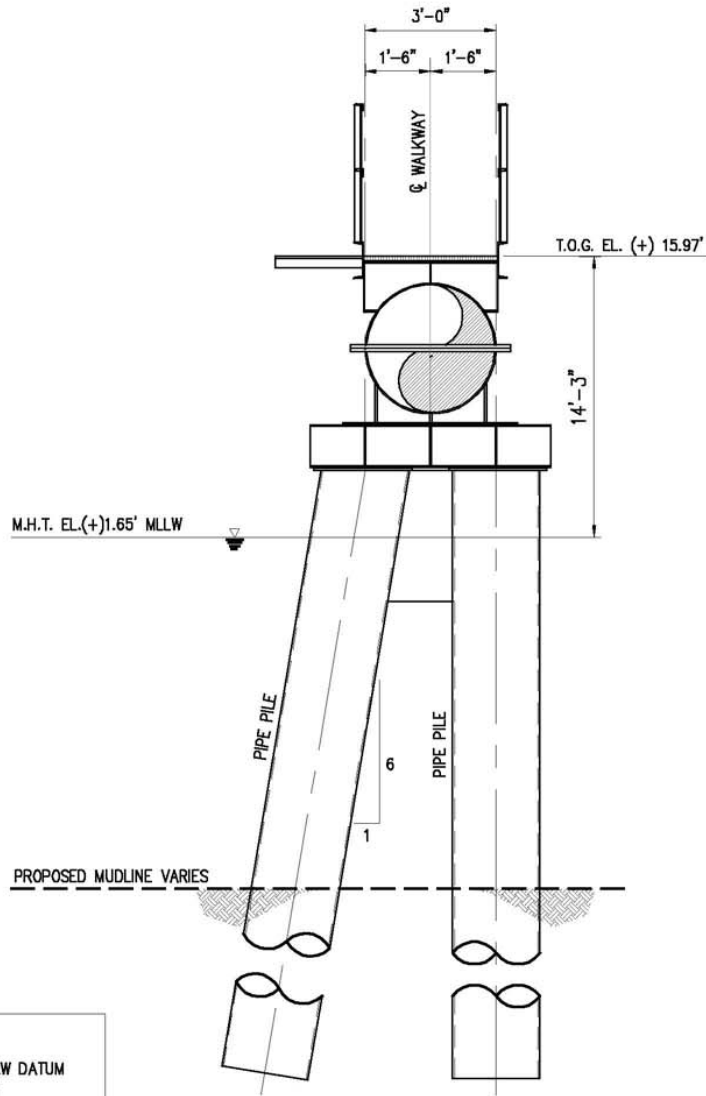
NEW ORLEANS, LA · F-2981
BEAUMONT, TX

EXXONMOBIL BEAUMONT REFINERY
BEAUMONT TEXAS

Figure 10d.
Proposed Breasting Dolphin

DATE JUN. '17
DESIGN BMB
DRAWN TMH
CHECK SCK
CONTRACT 10369
SHEET No.

7 OF 16



NOTE:
ELEVATIONS BASED ON MLLW DATUM
UNLESS NOTED OTHERWISE.
MEAN HIGH TIDE = (+) 1.65'
MEAN LOWER LOW TIDE = (-) 1.5' MLLW

TYPICAL WALKWAY SUPPORT

SCALE: N.T.S. (8 REQ'D)

30.089312° N
94.058758° W

10369-P09 REV A



LANIER & ASSOCIATES
CONSULTING ENGINEERS
INCORPORATED

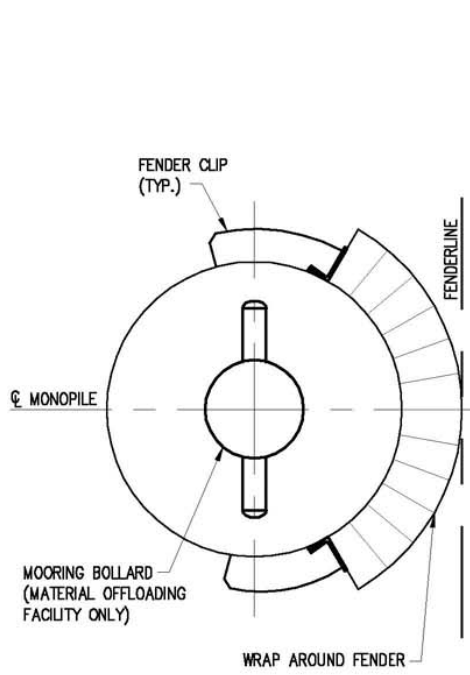
NEW ORLEANS, LA · F-2981
BEAUMONT, TX

EXXONMOBIL BEAUMONT REFINERY
BEAUMONT TEXAS

Figure 10e.
Proposed Typical Walkway Support

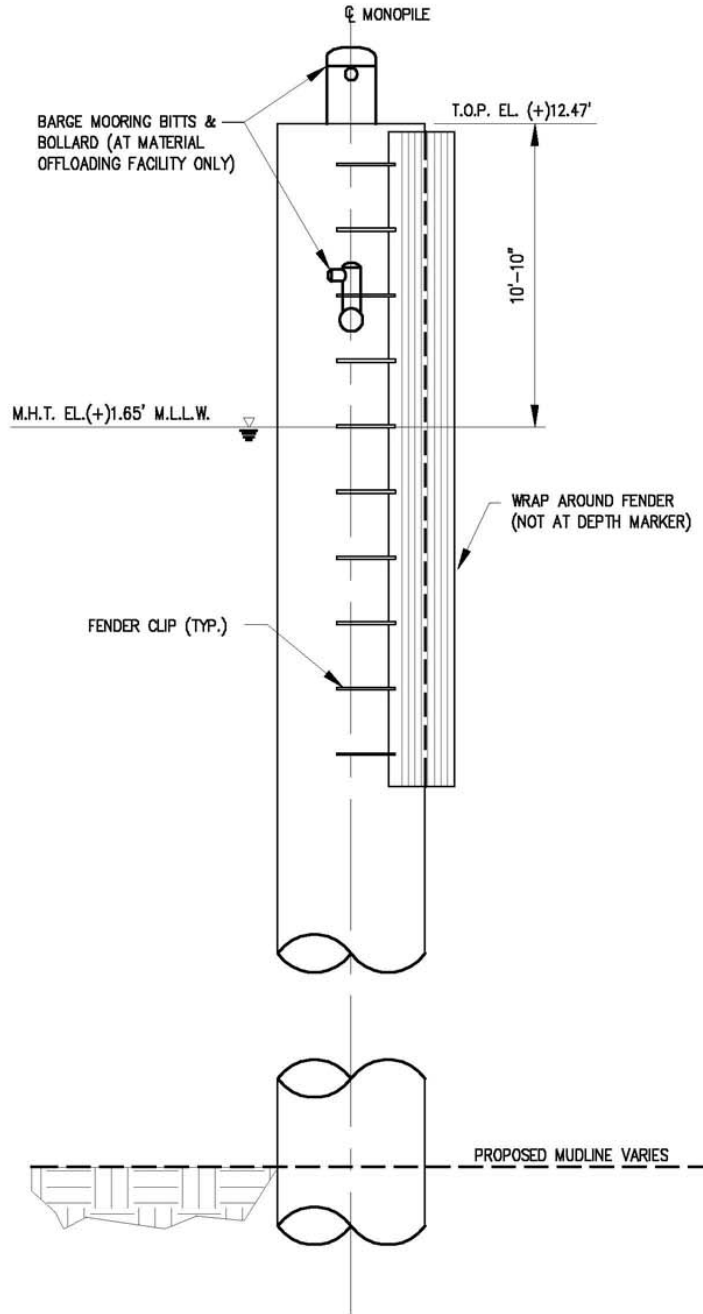
DATE JUN. '17
DESIGN BMB
DRAWN TMH
CHECK SKK
CONTRACT 10369
SHEET No.

9 OF 16



**PROTECTION/BARGE
MONOPILE PLAN**

N.T.S.



**PROTECTION/BARGE
MONOPILE ELEVATION**

N.T.S. (6 REQ'D)

NOTE:

ELEVATIONS BASED ON MLLW DATUM
UNLESS NOTED OTHERWISE.

MEAN HIGH TIDE = (+) 1.65'
MEAN LOWER LOW TIDE = (-) 1.5' MLLW

30.089312° N
94.058756° W

10369-P12 REV A



LANIER & ASSOCIATES
CONSULTING ENGINEERS
INCORPORATED

F-2981
NEW ORLEANS, LA · BEAUMONT, TX

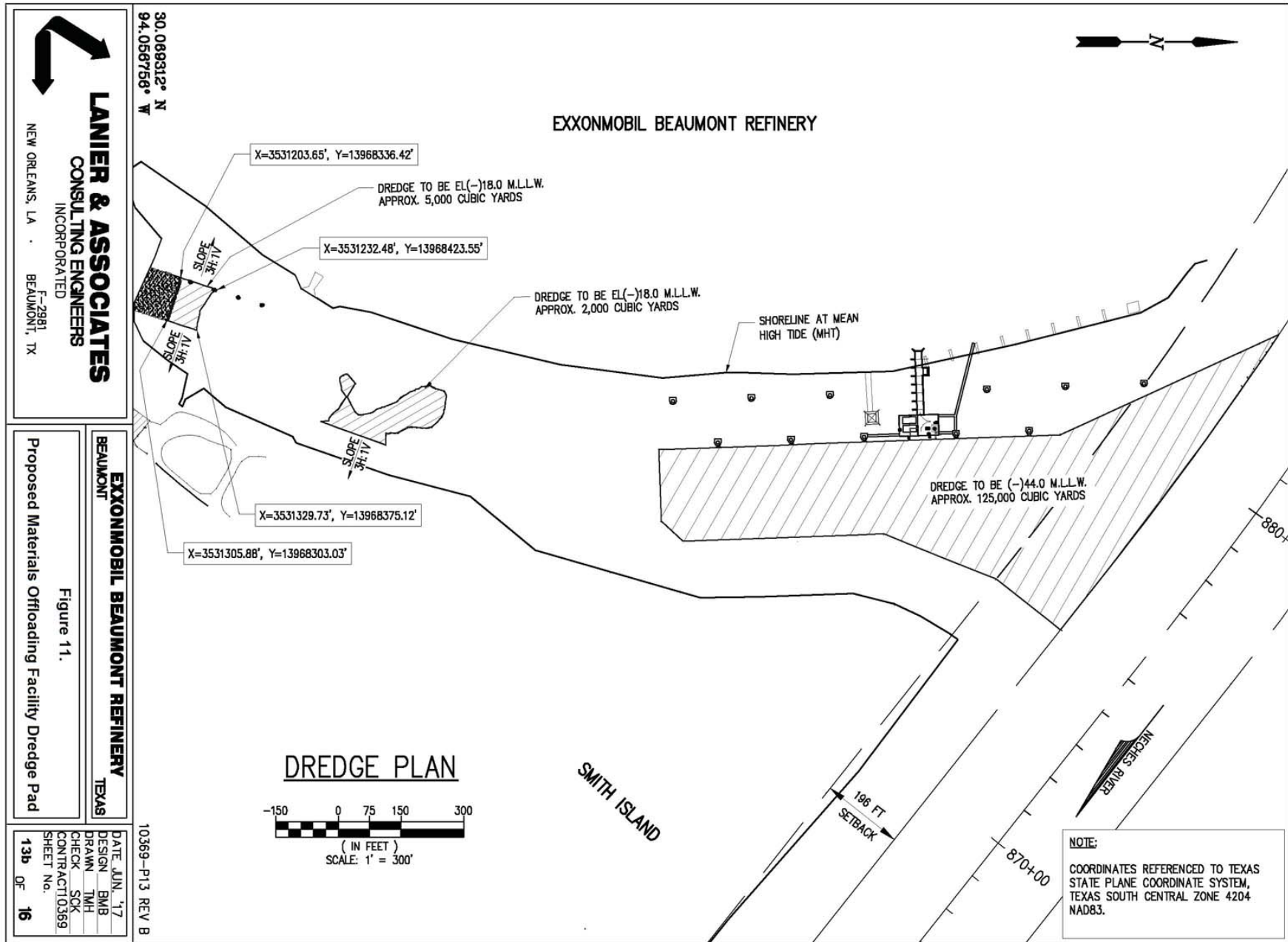
EXXONMOBIL BEAUMONT REFINERY
BEAUMONT TEXAS

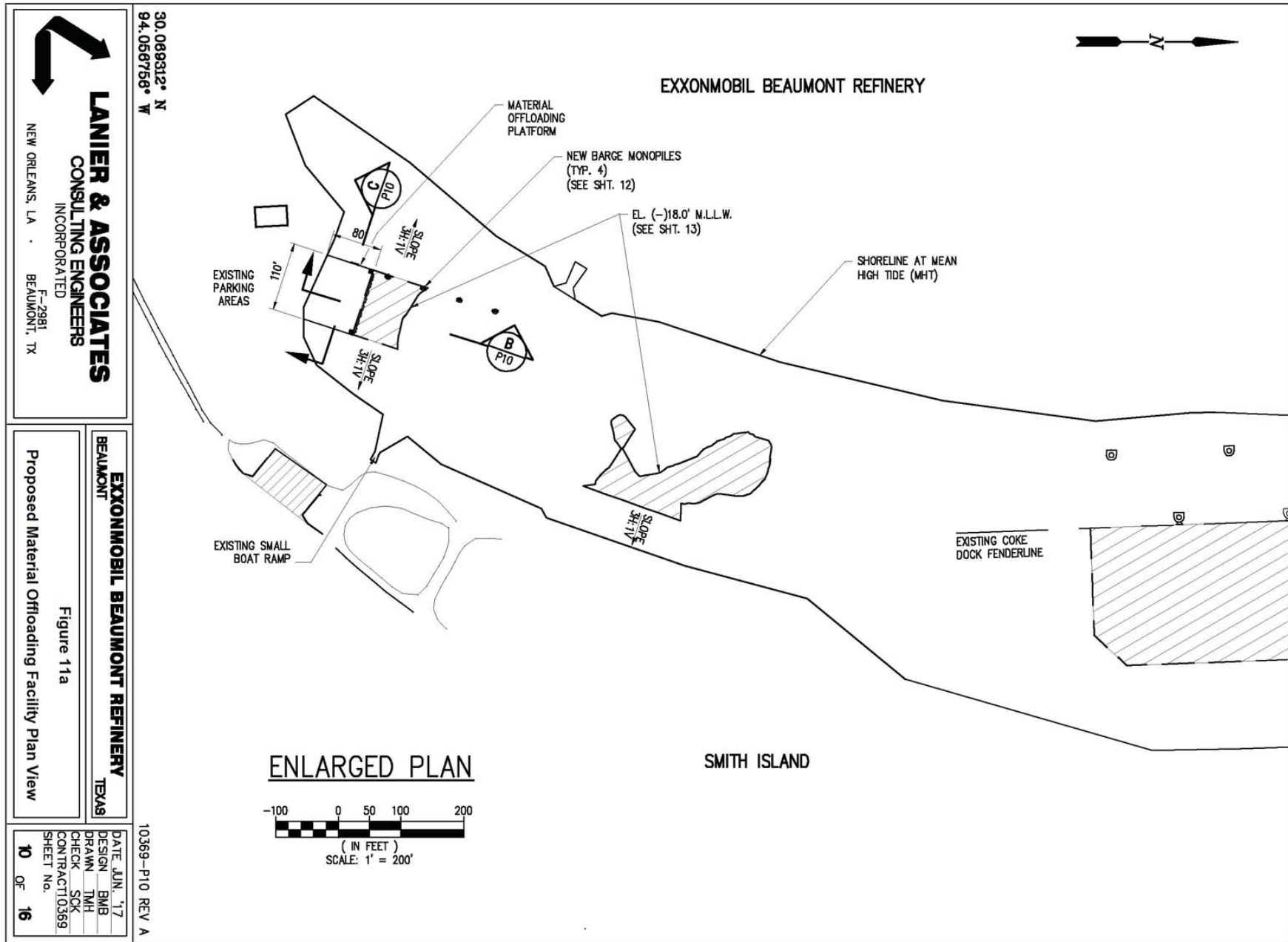
Figure 10f

Depth Marker/Barge Monopile Plan and Elevation

DATE JUN. '17
DESIGN BMB
DRAWN TMH
CHECK SKH
CONTRACT 10369
SHEET No.

12 OF 16





LANIER & ASSOCIATES
CONSULTING ENGINEERS
INCORPORATED
NEW ORLEANS, LA • BEAUMONT, TX

EXXONMOBIL BEAUMONT REFINERY
TEXAS
BEAUMONT

Proposed Material Offloading Facility Plan View
Figure 11a

10369-P10 REV A

DATE	JUN. '17
DESIGN	BMB
DRAWN	TMH
CHECK	SKK
CONTRACT	10369
SHEET No.	10 OF 16

LANIER & ASSOCIATES
CONSULTING ENGINEERS
INCORPORATED
NEW ORLEANS, LA · BEAUMONT, TX

30.089312° N
94.056756° W

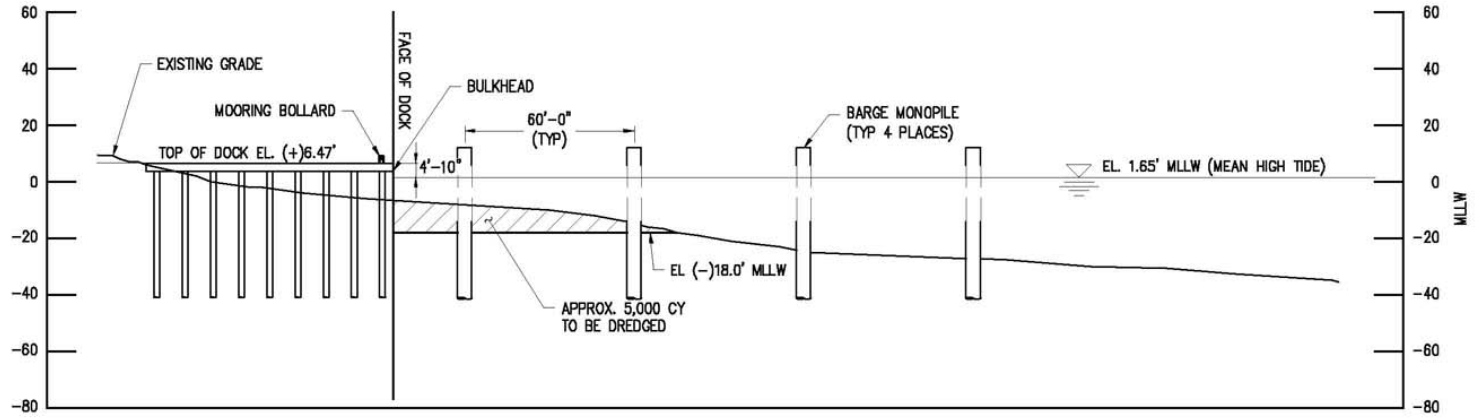
EXXONMOBIL BEAUMONT REFINERY
BEAUMONT TEXAS

Material Offloading Facility Typical Cross Section

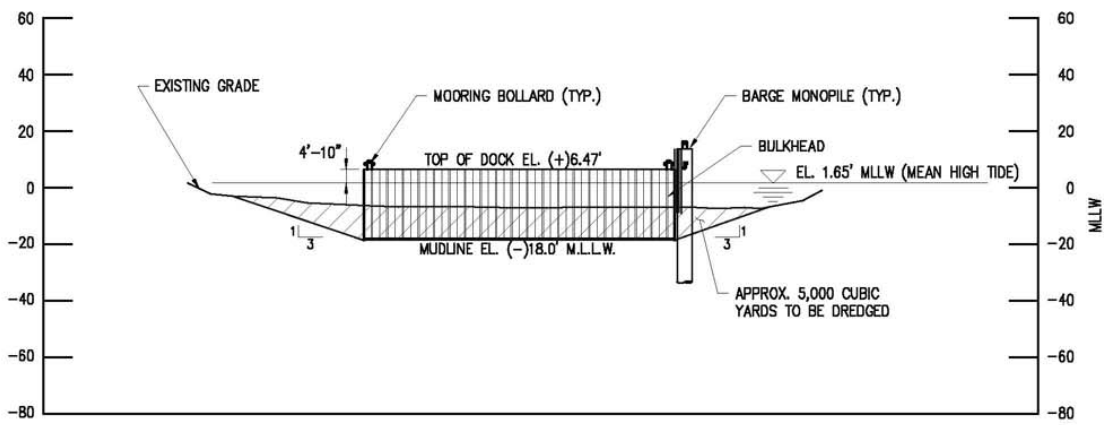
Figure 11b

DATE JUN. '17
DESIGN BMB
DRAWN TMH
CHECK SCK
CONTRACT 10369
SHEET No. 11 OF 16

10369-P11 REV A

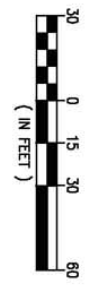


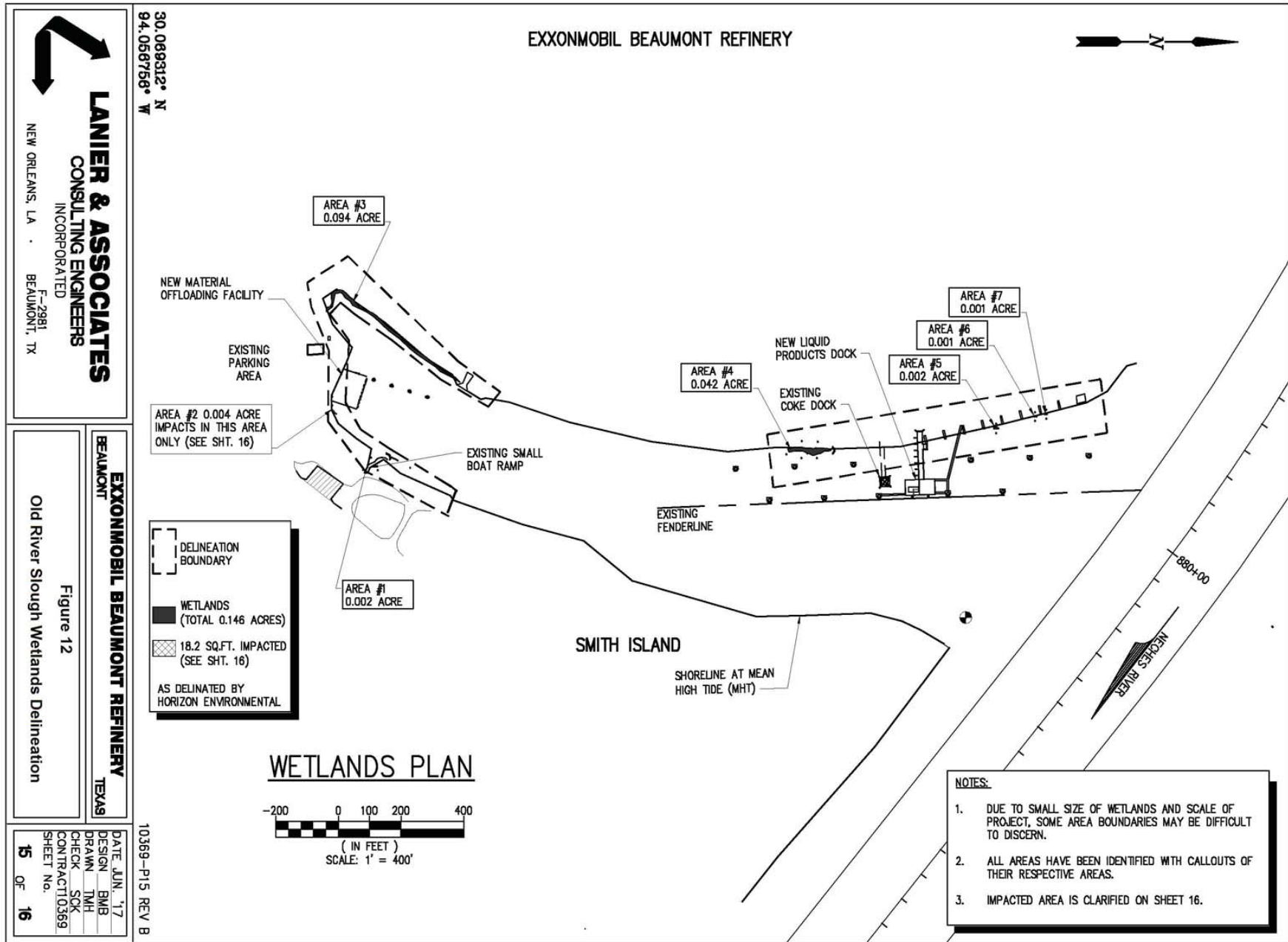
(B) TYPICAL CROSS-SECTION
SCALE: 1" = 60'

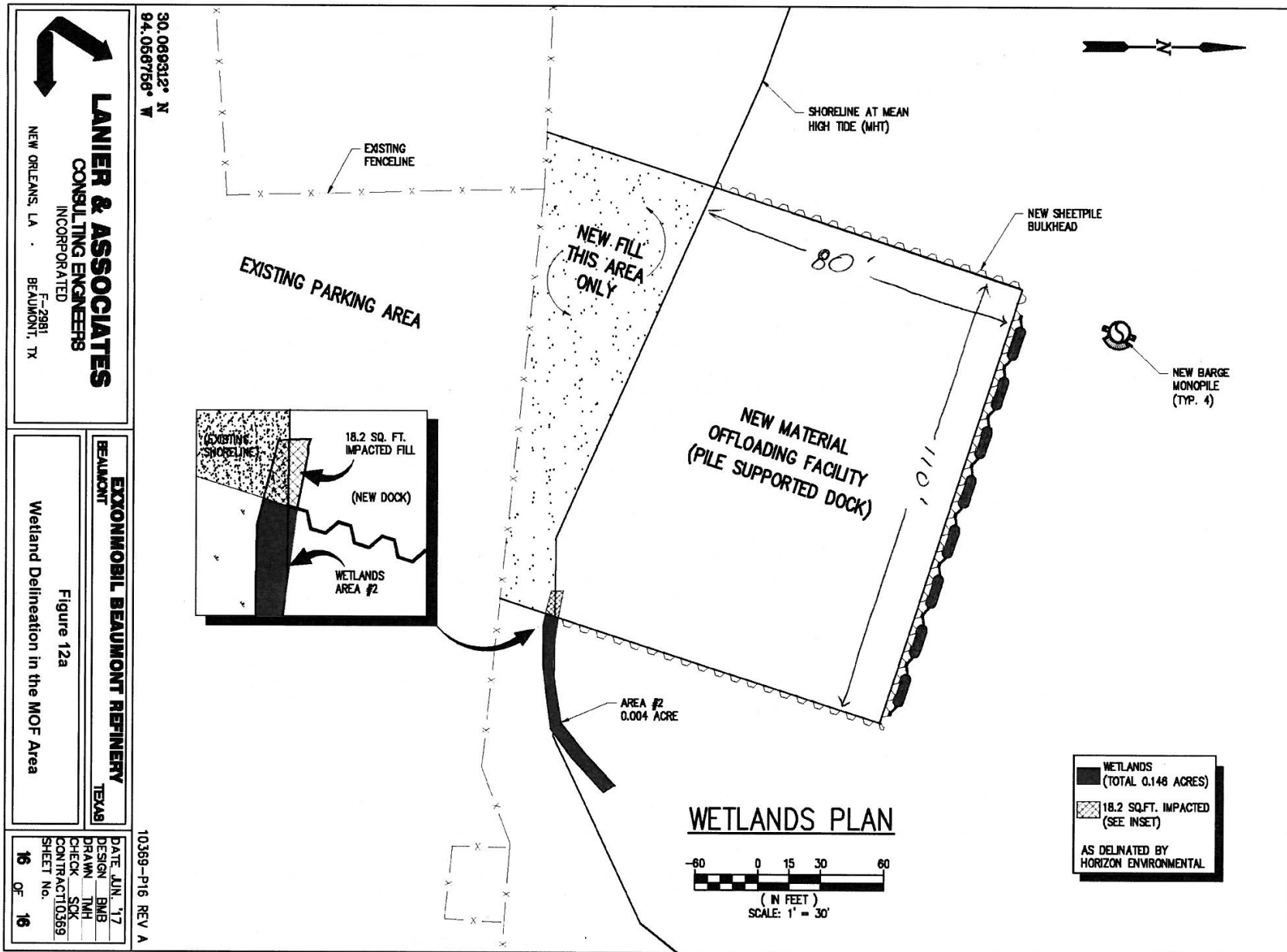


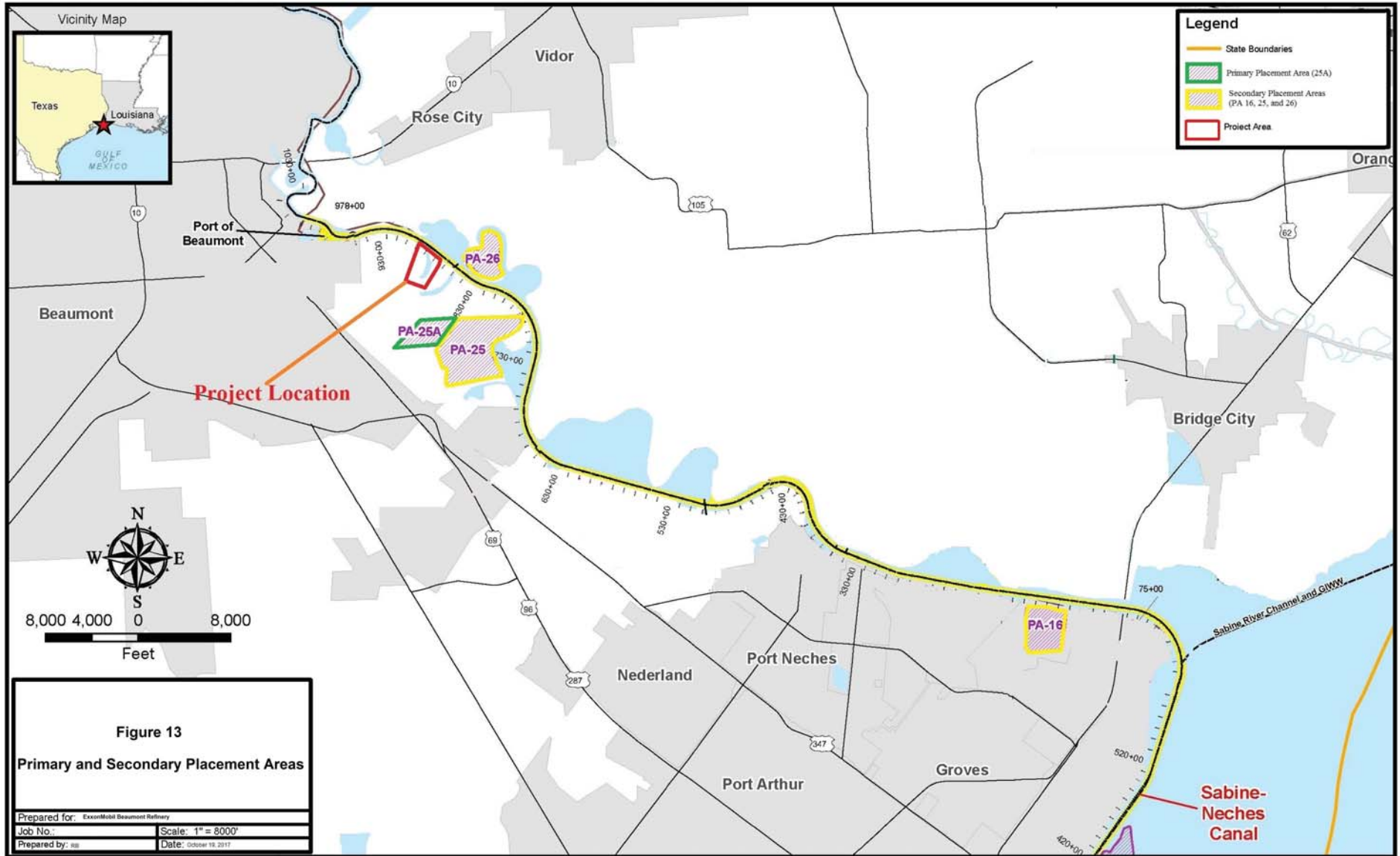
(C) TYPICAL CROSS-SECTION
SCALE: 1" = 60'

NOTE:
ELEVATIONS BASED ON MLLW DATUM
UNLESS NOTED OTHERWISE.
MEAN HIGH TIDE = (+) 1.65'
MEAN LOWER LOW TIDE = (-) 1.5' MLLW









01-1A