

SITE VICINITY MAP

Project #: 9335N-IP
For: Brazoria County Engineering Department
Location: San Bernard River and GICWW
Brazoria County, Texas

REVISIONS	
April 28, 2017	by MDB

BERG•OLIVER ASSOCIATES, INC.

ENVIRONMENTAL SCIENCE & LAND USE CONSULTANTS
14701 ST. MARY'S LANE, SUITE 400
HOUSTON, TEXAS 77079 PHONE (281)589-0898 <http://www.bergoliver.com>





SITE LOCATION MAP

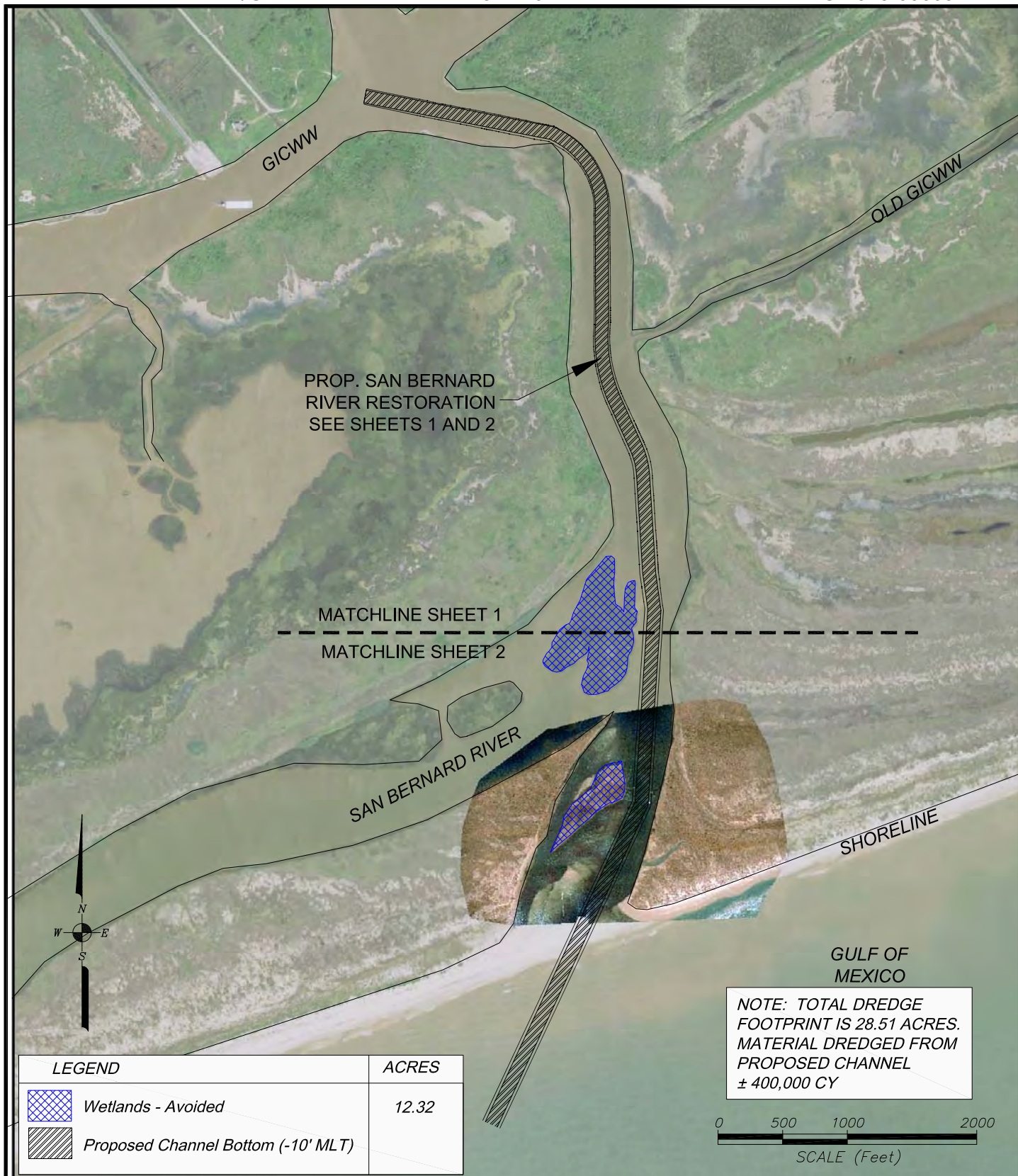
Project #: 9335N-IP
For: Brazoria County Engineering Department
Location: San Bernard River and GICWW
Brazoria County, Texas

REVISIONS	
April 28, 2017	by MDB

BERG•OLIVER ASSOCIATES, INC.

ENVIRONMENTAL SCIENCE & LAND USE CONSULTANTS
14701 ST. MARY'S LANE, SUITE 400
HOUSTON, TEXAS 77079 PHONE (281)589-0898 <http://www.bergoliver.com>





PROPOSED SAN BERNARD RIVER RESTORATION OVERVIEW

PROJECT #: 9335N-IP
FOR: Brazoria County Engineering Department
LOCATION: San Bernard River and GICWW
Brazoria County, Texas

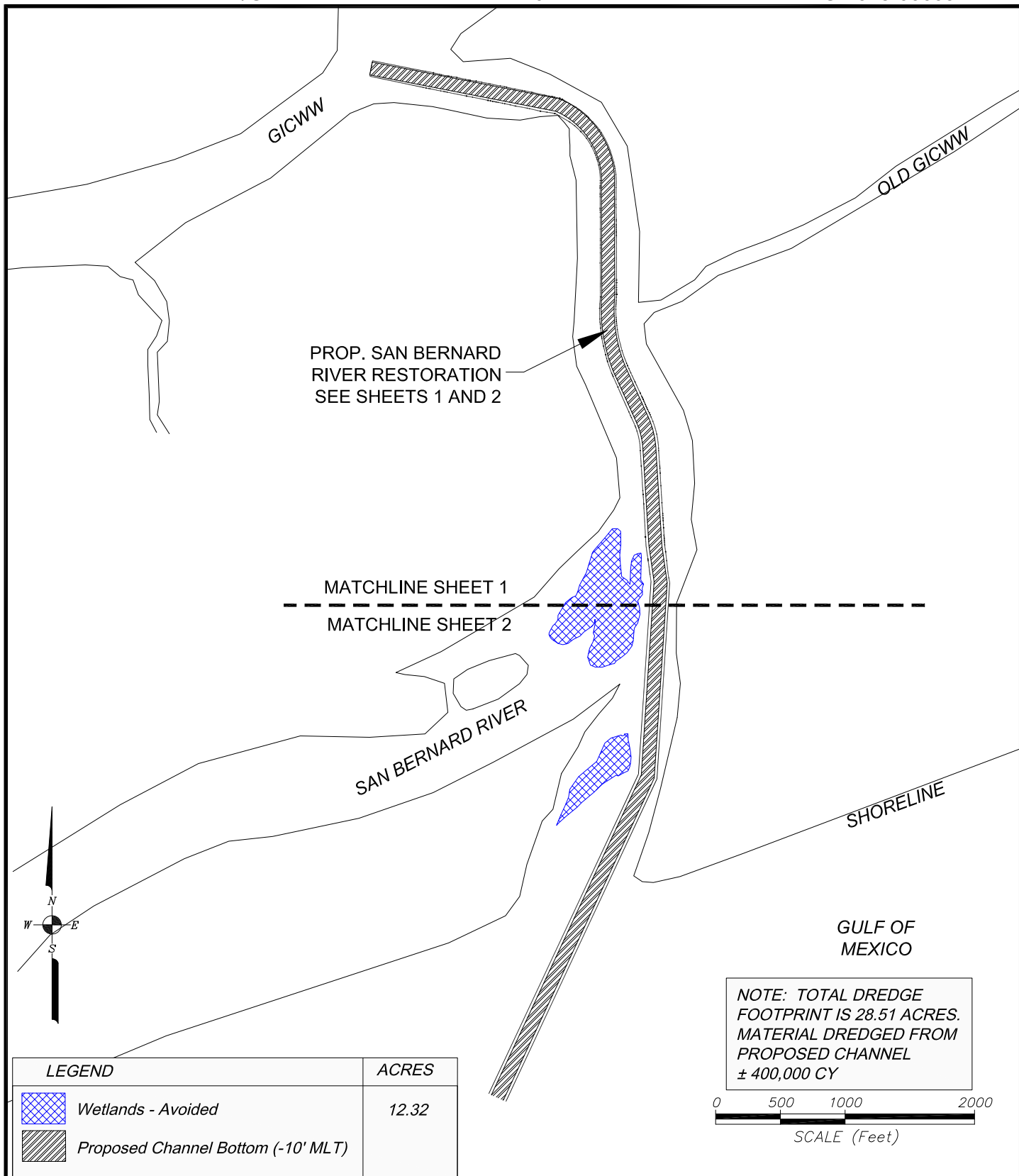
REVISIONS:
April 28, 2017 by MDB
Dec. 4, 2017 by MDB

BERG OLIVER ASSOCIATES, INC.

ENVIRONMENTAL SCIENCE &
LAND USE CONSULTANTS

14701 ST. MARY'S LANE, SUITE 400 HOUSTON, TX 77079
PHONE (281) 589-0898 <http://www.bergoliver.com>





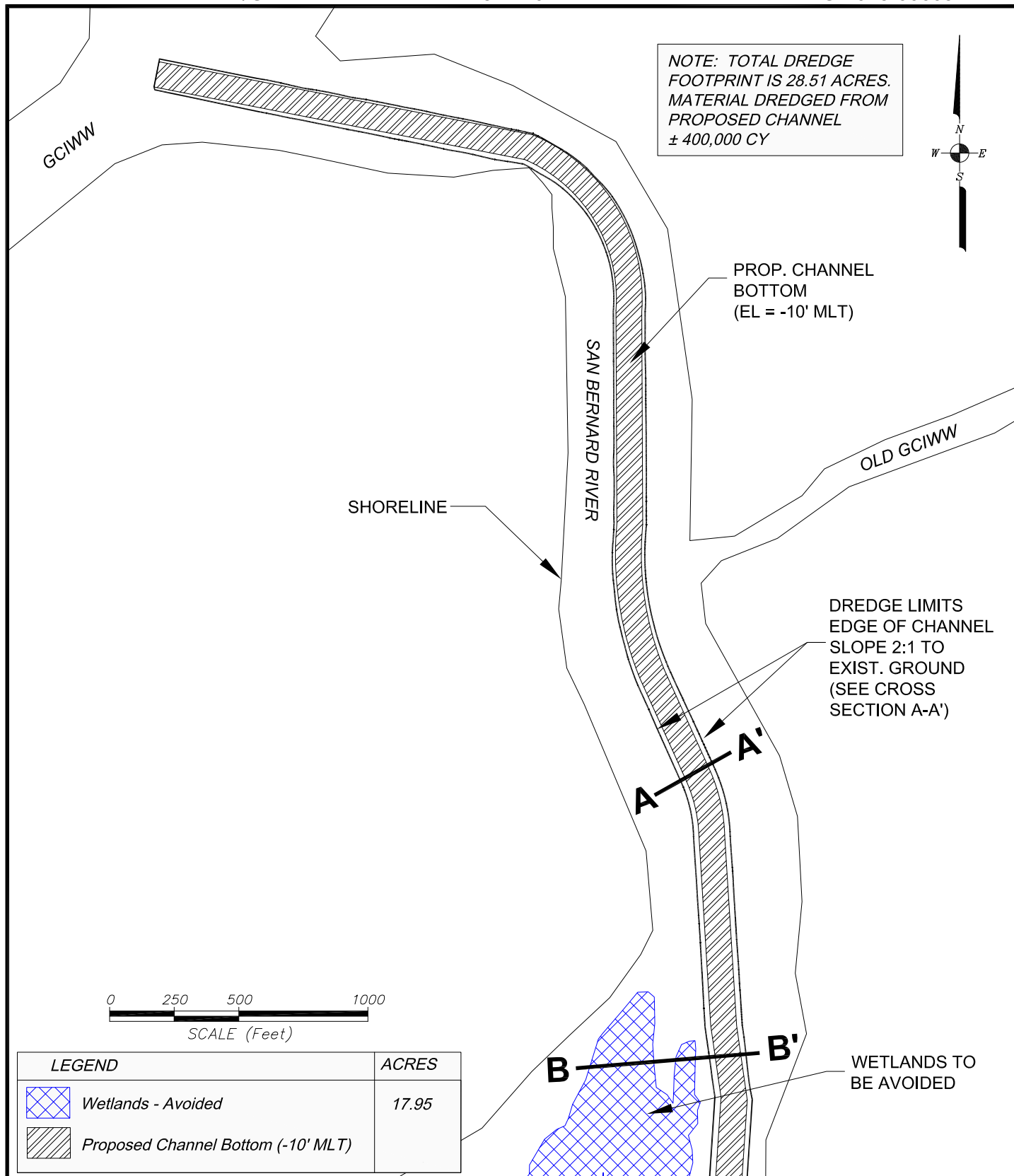
PROPOSED SAN BERNARD RIVER RESTORATION OVERVIEW

PROJECT #: 9335N-IP
FOR: Brazoria County Engineering Department
LOCATION: San Bernard River and GICWW
Brazoria County, Texas

REVISIONS:
April 28, 2017 by MDB
Dec. 4, 2017 by MDB

BERG-OLIVER ASSOCIATES, INC.
ENVIRONMENTAL SCIENCE &
LAND USE CONSULTANTS
14701 ST. MARY'S LANE, SUITE 400 HOUSTON, TX 77079
PHONE (281) 589-0898 <http://www.bergoliver.com>





PROPOSED SAN BERNARD RIVER RESTORATION
SHEET 1 OF 2

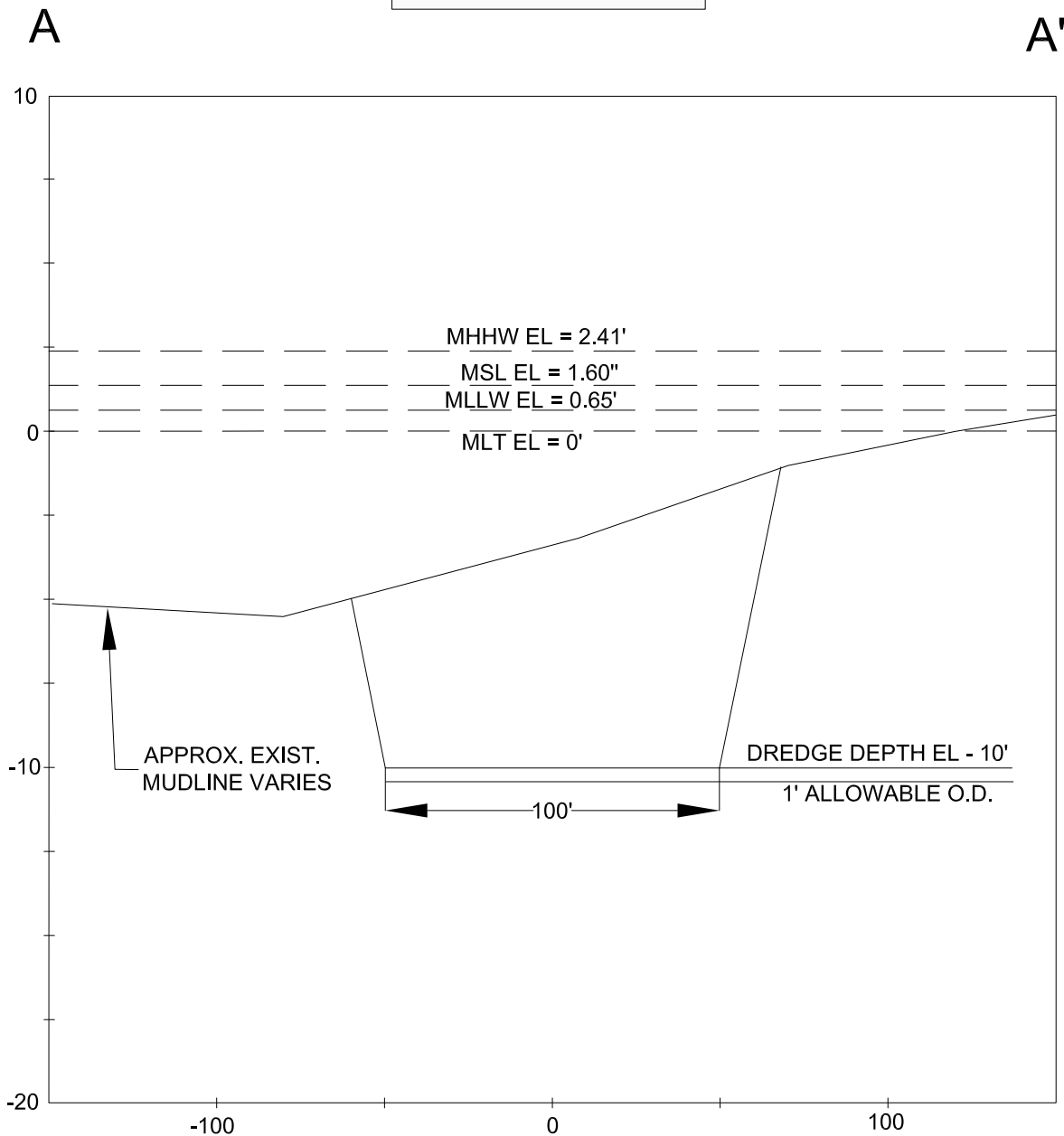
PROJECT #: 9335N-IP
FOR: Brazoria County Engineering Department
LOCATION: San Bernard River and GICWW
Brazoria County, Texas

REVISIONS:	
April 28, 2017 by MDB	
Dec. 4, 2017 by MDB	

BERG[®]OLIVER ASSOCIATES, INC.
ENVIRONMENTAL SCIENCE &
LAND USE CONSULTANTS
14701 ST. MARY'S LANE, SUITE 400 HOUSTON, TX 77079
PHONE (281) 589-0898 <http://www.bergoliver.com>



NOTE: TOTAL DREDGE
FOOTPRINT IS 28.51 ACRES.
MATERIAL DREDGED FROM
PROPOSED CHANNEL
 $\pm 400,000$ CY



TYPICAL DREDGE CROSS SECTION A-A'

PROJECT #: 9335N-IP
FOR: Brazoria County Engineering Department
LOCATION: San Bernard River and GICWW
Brazoria County, Texas

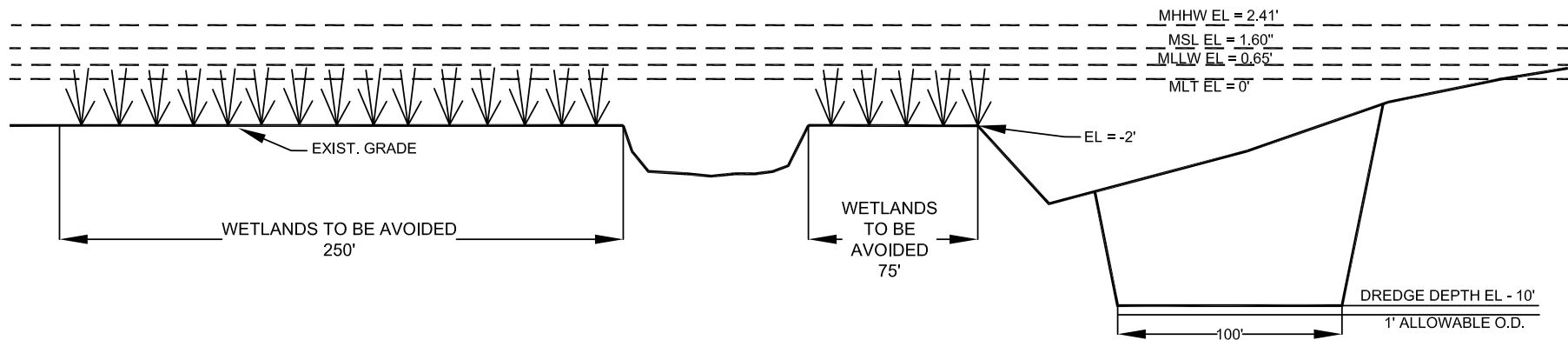
REVISIONS:	
April 28, 2017 by MDB	
Dec. 4, 2017 by MDB	

BERG[®]OLIVER ASSOCIATES, INC.
ENVIRONMENTAL SCIENCE &
LAND USE CONSULTANTS
14701 ST. MARY'S LANE, SUITE 400 HOUSTON, TX 77079
PHONE (281) 589-0898 <http://www.bergoliver.com>



B

B'



**TYPICAL DREDGE - WETLANDS TO BE AVOIDED
CROSS SECTION B-B'**

PROJECT #: 9335N-IP
FOR: Brazoria County Engineering Department
LOCATION: San Bernard River and GICWW
Brazoria County, Texas

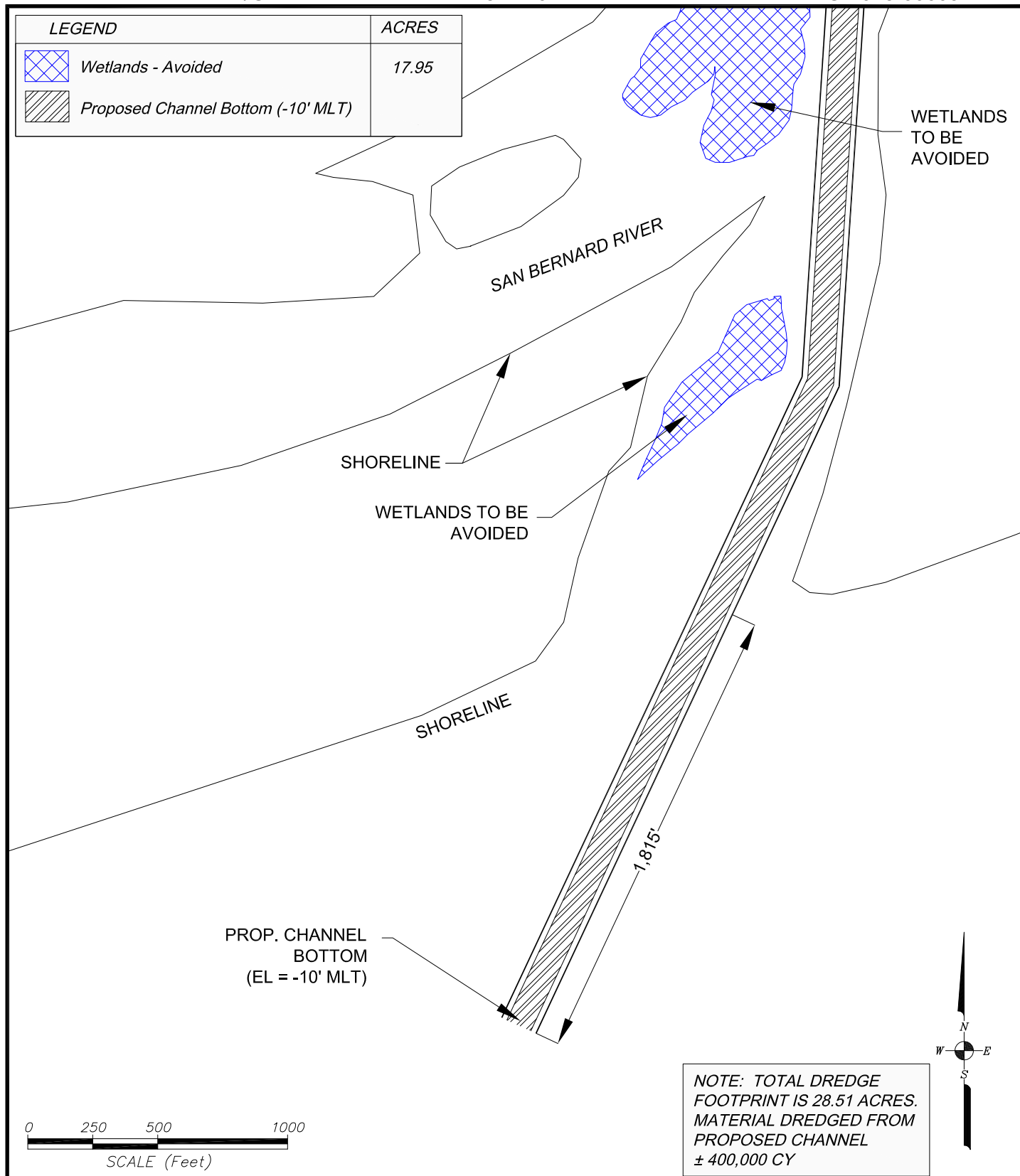
REVISIONS:
July 13, 2017 by MDB
Dec. 4, 2017 by MDB

BERG•OLIVER ASSOCIATES, INC.

ENVIRONMENTAL SCIENCE &
LAND USE CONSULTANTS

14701 ST. MARY'S LANE, SUITE 400 HOUSTON, TX 77079
PHONE (281) 589-0898 <http://www.bergoliver.com>



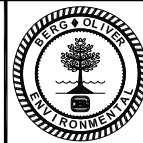


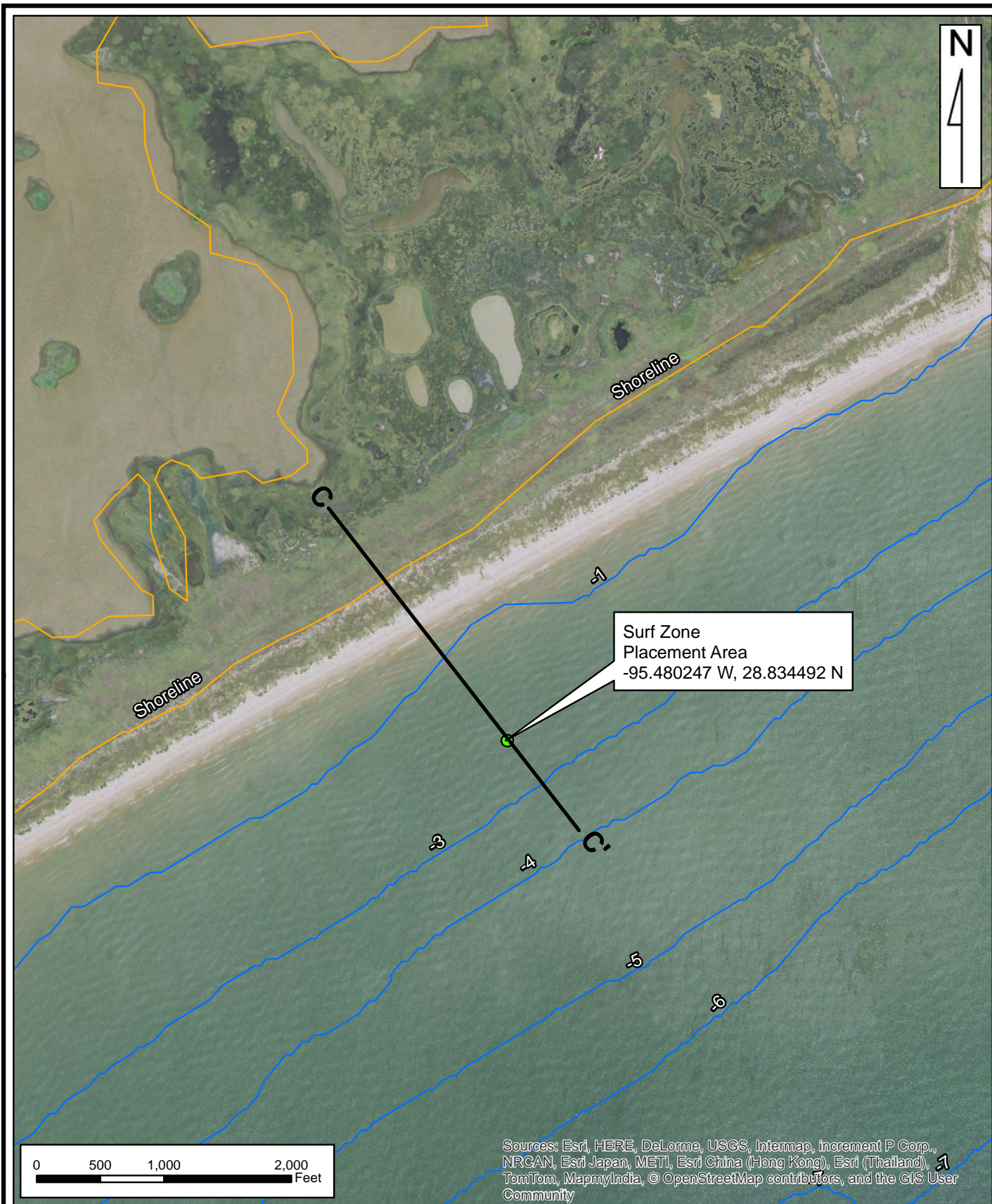
PROPOSED SAN BERNARD RIVER RESTORATION
SHEET 2 OF 2

PROJECT #: 9335N-IP
FOR: Brazoria County Engineering Department
LOCATION: San Bernard River and GICWW
Brazoria County, Texas

REVISIONS:
April 28, 2017 by MDB
Dec. 4, 2017 by MDB

BERG-OLIVER ASSOCIATES, INC.
ENVIRONMENTAL SCIENCE &
LAND USE CONSULTANTS
14701 ST. MARY'S LANE, SUITE 400 HOUSTON, TX 77079
PHONE (281) 589-0898 <http://www.bergoliver.com>





SURF ZONE PLACEMENT AREA

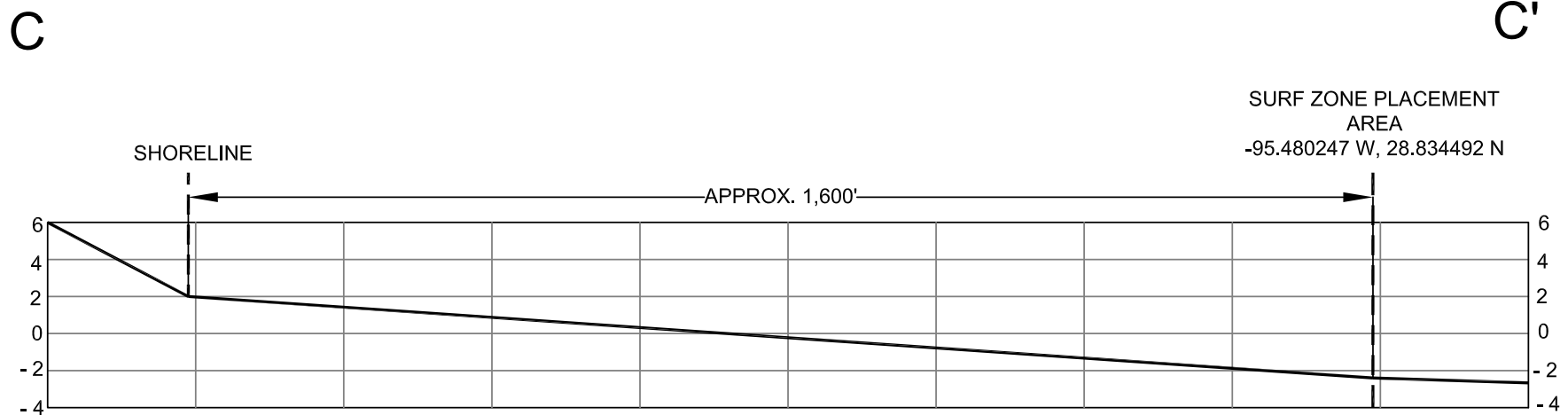
Project #: 9335N-IP
For: Brazoria County Engineering Department
Location: San Bernard River and GICWW
Brazoria County, Texas

REVISIONS

BERG•OLIVER ASSOCIATES, INC.

ENVIRONMENTAL SCIENCE & LAND USE CONSULTANTS
14701 ST. MARY'S LANE, SUITE 400
HOUSTON, TEXAS 77079 PHONE (281)589-0898 <http://www.bergoliver.com>





*SURF ZONE PLACEMENT AREA
TYPICAL CROSS SECTION C-C'*

PROJECT #: 9335N-IP
FOR: Brazoria County Engineering Department
LOCATION: San Bernard River and GICWW
Brazoria County, Texas

REVISIONS:
July 13, 2017 by MDB
Dec. 4, 2017 by MDB

BERG•OLIVER ASSOCIATES, INC.
ENVIRONMENTAL SCIENCE &
LAND USE CONSULTANTS
14701 ST. MARY'S LANE, SUITE 400 HOUSTON, TX 77079
PHONE (281) 589-0898 <http://www.bergoliver.com>

