

Figure 1 Area Map of Cairn Energy Partners, Black Bayou Oil and Gas Field Prospect Located In Section 18 of Township 12 South Range 12 West of Cameron Parish Louisiana. Source: USGS 1975 Cameron Farms, 7.5 minute Quadrangle.

| | | |
|---|---------------------|-------------------|
| Drawn By: JCL | Project # 225.00 | Date: 02/10/20 |
| Encore Environmental & Safety, LLC 1190 LaHaye Road Mamou, Louisiana, 70554 (337) 831-2708 | | |

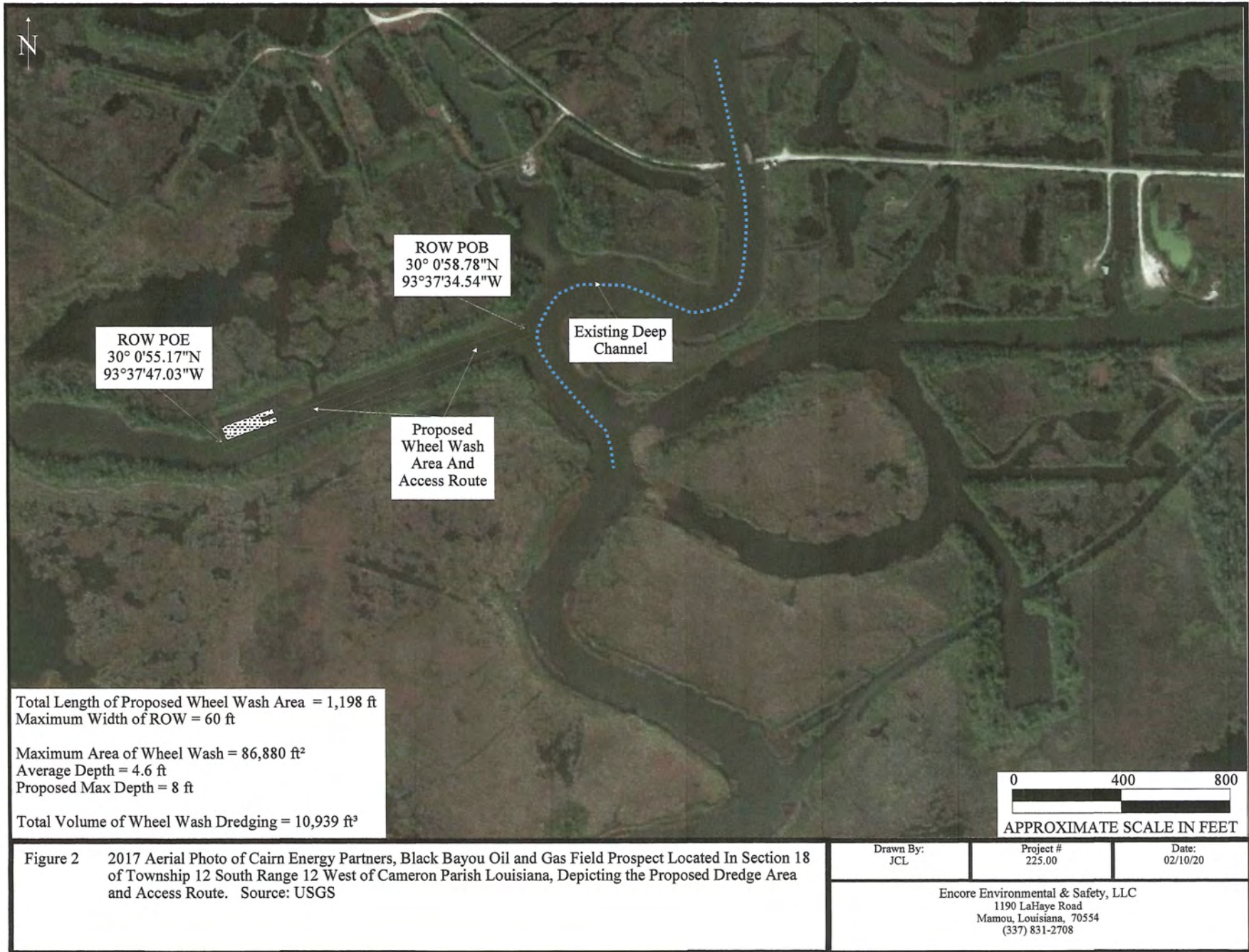


Figure 2 2017 Aerial Photo of Cairn Energy Partners, Black Bayou Oil and Gas Field Prospect Located In Section 18 of Township 12 South Range 12 West of Cameron Parish Louisiana, Depicting the Proposed Dredge Area and Access Route. Source: USGS



Figure 3 2017 Aerial Photo of Cairn Energy Partners, Black Bayou Oil and Gas Field Prospect Located In Section 18 of Township 12 South Range 12 West of Cameron Parish Louisiana, Depicting the Proposed ROW With Cross Section Detail Locations. Source: USGS

| | | |
|---|---------------------|-------------------|
| Drawn By: JCL | Project # 225.00 | Date: 02/10/20 |
| Encore Environmental & Safety, LLC 1190 LaHaye Road Mamou, Louisiana, 70554 (337) 831-2708 | | |

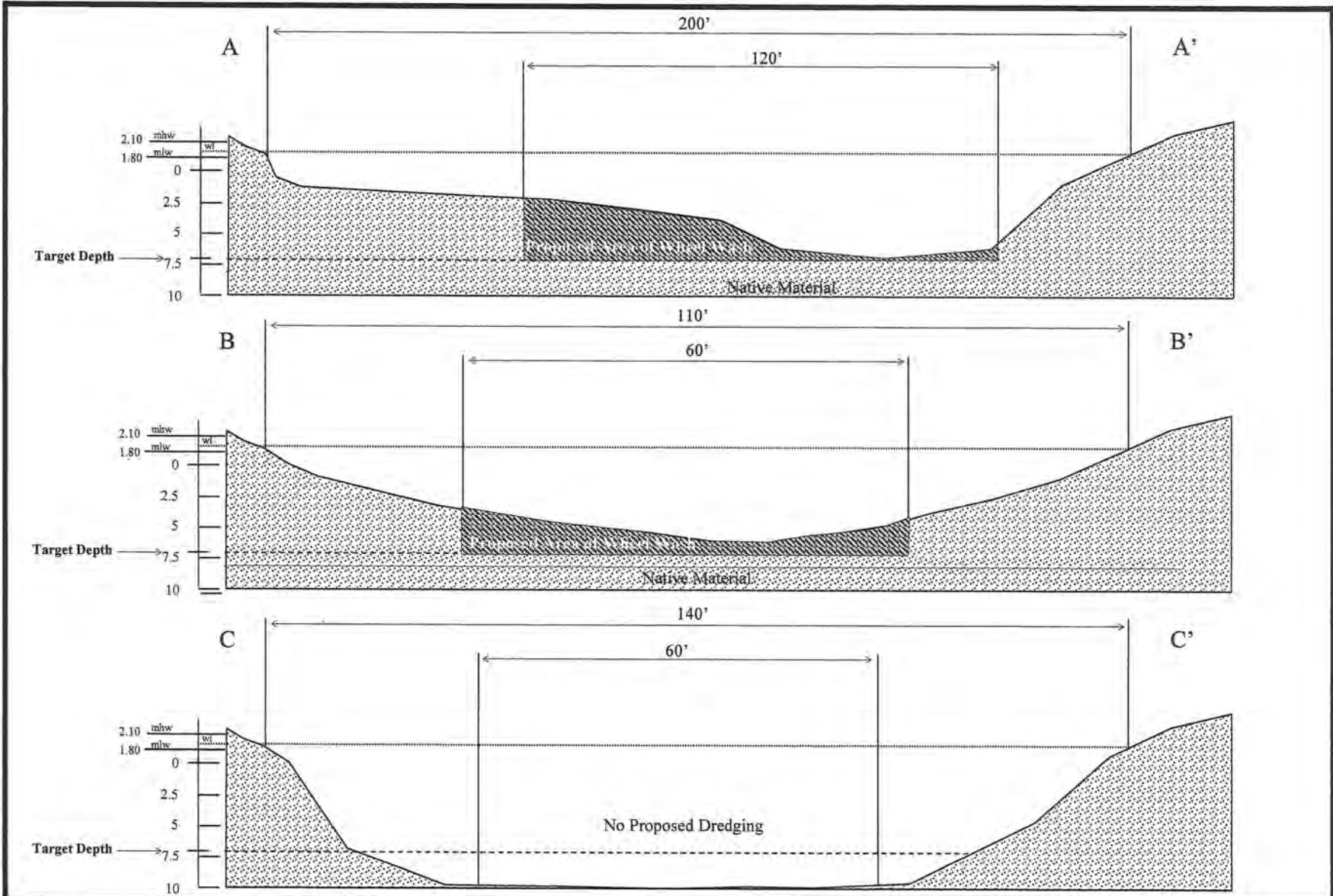


Figure 4. Cross Section Detail of Cairn Energy Partners, Black Bayou Oil and Gas Field Prospect.

| | | |
|------------------|---------------------|-------------------|
| Drawn By: JCL | Project # 225.00 | Date: 02/11/20 |
|------------------|---------------------|-------------------|

Encore Environmental & Safety, LLC
 1190 LaHaye Road
 Mamou, Louisiana, 70554
 (337) 831-2708

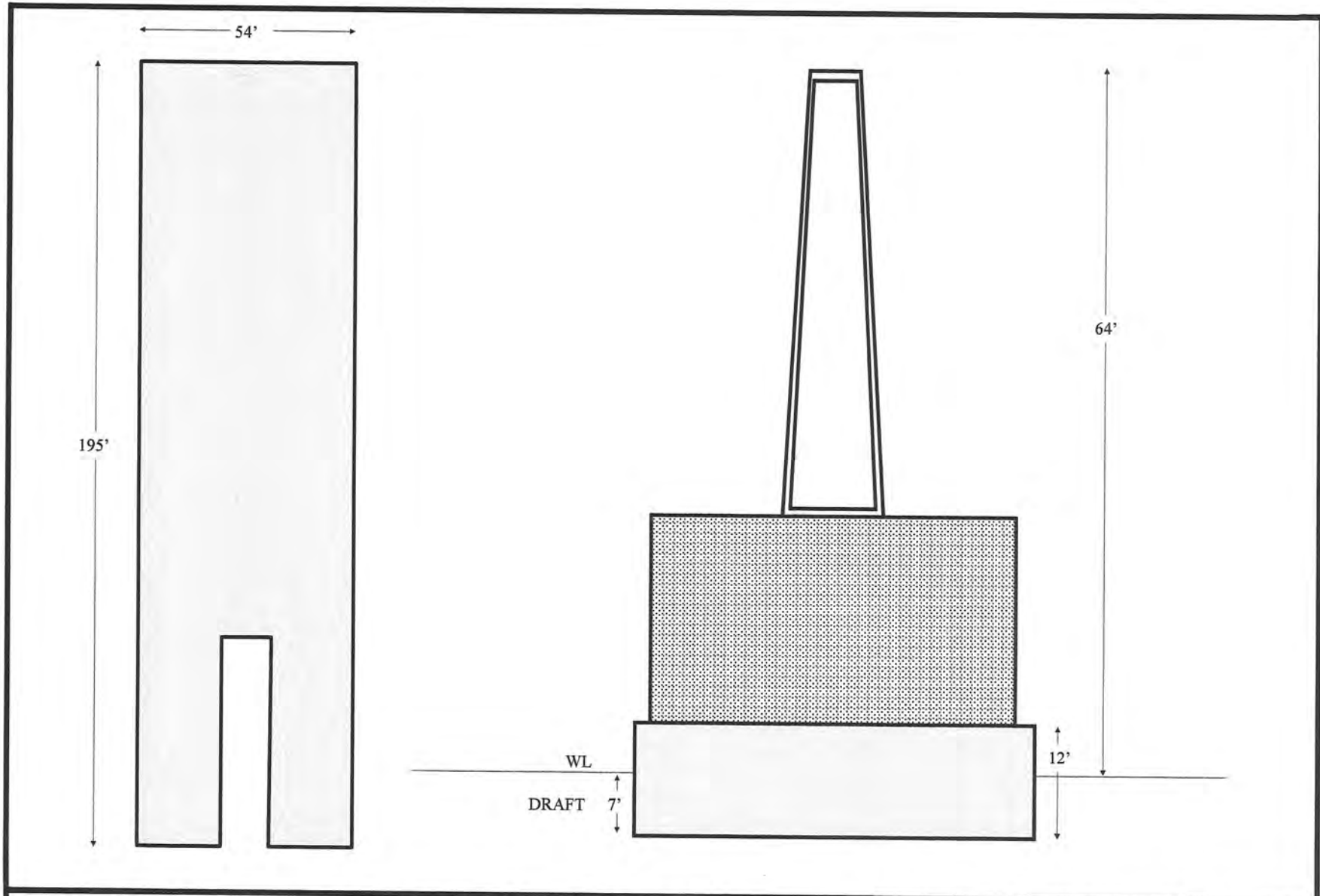


Figure 5 Equipment Specifications of Cairn Energy Partners, Black Bayou Oil and Gas Field Prospect.
Drawn By: JCL

| | | |
|---|---------------------|------------------|
| Drawn By: JCL | Project # 225.00 | Date: 2/10/20 |
| Encore Environmental & Safety, LLC 1190 LaHaye Road Mamou, Louisiana, 70554 (337) 831-2708 | | |