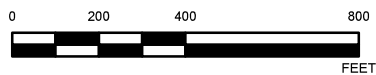


- LEGEND**
- PROPERTY BOUNDARY
 - SURVEY AREA
 - JURISDICTIONAL WATERBODY**
 - STREAM
 - NON-JURISDICTIONAL WATERBODIES**
 - WETLANDS
 - DITCHES
 - PONDS



REFERENCE(S)

1. DITCHES, PONDS, WETLANDS, SURVEY AREA, GOLDER ASSOCIATES, INC., 2020.
2. AERIAL IMAGERY, USDA/NAP, 2016.

COORDINATE SYSTEM: STATE PLANE 83 TX SOUTH CENTRAL NAD83 US SURVEY FEET-CSREF
 PROJECTION: LAMBERT CONFORMAL CONIC
 DATUM: NORTH AMERICAN 1983

CLIENT
WASTE MANAGEMENT OF TEXAS, INC.

PROJECT
ATASCOCITA RD CAMPUS PROJECT

TITLE
HISTORIC AERIAL MAP - 2016

CONSULTANT



YYYY-MM-DD	2021-12-08
DESIGNED	GFD
PREPARED	GFD
REVIEWED	KB
APPROVED	AT

PROJECT NO.
 21500737

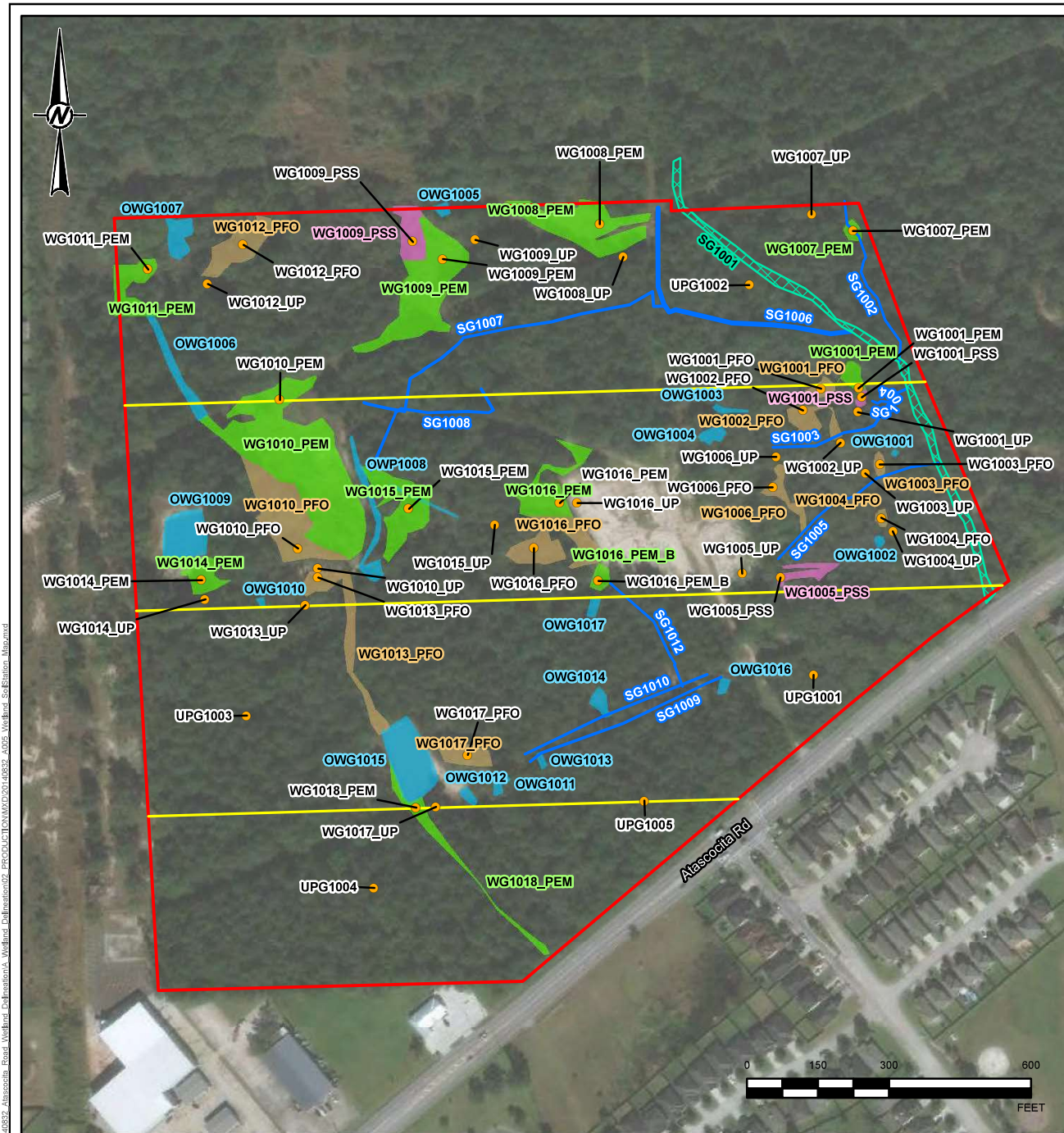
CONTROL
 A010

REV.
 0

FIGURE
 1

PATH: G:\Projects\Waste Management of Texas\Atascocita Road Property\99 PROJECTS\21500737 Houston Highway\Road Permit\A_HistoricMap\02 PRODUCTION\A010_HistoricAerial_2016.mxd

IF THIS MEASUREMENT DOES NOT MATCH WHAT IS SHOWN, THE SHEET SIZE HAS BEEN MODIFIED FROM A010



LEGEND

- SOIL STATIONS
- ▭ SURVEY AREA
- TRANSECTS
- ▭ JURISDICTIONAL WATERBODY
- ▭ STREAM

NON-JURISDICTIONAL WATERBODIES

- ▭ PEM
- ▭ PFO
- ▭ PSS
- ▭ DITCHES
- ▭ PONDS

REFERENCE(S)

1. SOIL STATIONS, TRANSECTS, DITCHES, PONDS, WETLANDS, SURVEY AREA, GOLDER ASSOCIATES, INC., 2020.
2. SERVICE LAYER CREDITS: SOURCE: ESRI, DIGITALGLOBE, GEOEYE, EARTHSTAR GEOGRAPHICS, CNES/AIRBUS DS, USDA, USGS, AEROGRIID, IGN, AND THE GIS USER COMMUNITY

COORDINATE SYSTEM: NAD 1983 STATEPLANE TEXAS SOUTH CENTRAL FIPS 4204 FEET
 PROJECTION: LAMBERT CONFORMAL CONIC
 DATUM: NORTH AMERICAN 1983

CLIENT

WASTE MANAGEMENT OF TEXAS, INC.

PROJECT

ATASCOCITA RD CAMPUS PROJECT

TITLE

WETLAND AND SOIL STATIONS MAP

CONSULTANT



GOLDER

YYYY-MM-DD 2020-04-23

DESIGNED GFD

PREPARED GFD

REVIEWED KB

APPROVED JMT

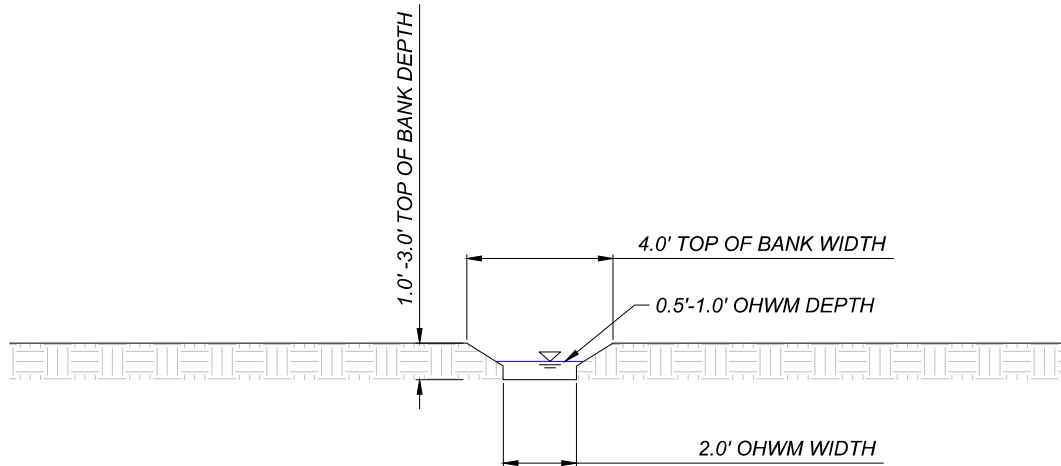
PROJECT NO.
20140832

CONTROL
A005

REV.
0

FIGURE
2A

1 in IF THIS MEASUREMENT DOES NOT MATCH WHAT IS SHOWN, THE SHEET SIZE HAS BEEN MODIFIED FROM ANSI A



TYPICAL SECTION EPHEMERAL DITCHES

Scale: 1" = 5'

NOTES:

Typical fill types will include native soils and a concrete parking lot. Some ditches are located in cut areas where storm ponds are to be located. See proposed site map.

Z:\Alpha-Data\DATA\ENGINEERING\ENG-1474 Houston TX Hauling Facility\Golder\Files Sent to Golder\20220304 Stream Cross Sections.dwg, 3/11/2022 11:44 AM

ISSUE DATE 3/10/2022 SCALE 1" = 100' CTR INT. 2'

REV	DATE	DESCRIPTION	DWN BY	DES BY	CHK BY	APP BY

Diversified Engineering Inc.
CONSULTING ENGINEERS & SURVEYORS
175 RAY AVENUE, N.E.
NEW PHILADELPHIA, OH 44663
Phone: (330) 364-1531
Fax: (330) 364-4031
e-mail: dell@div-eng.com
Web: www.div-eng.com

WASTE MANAGEMENT

PROJECT: ATASCOCITA RD CAMPUS

SHEET TITLE: TYPICAL STREAM CROSS SECTION

SHEET NO:

1/1