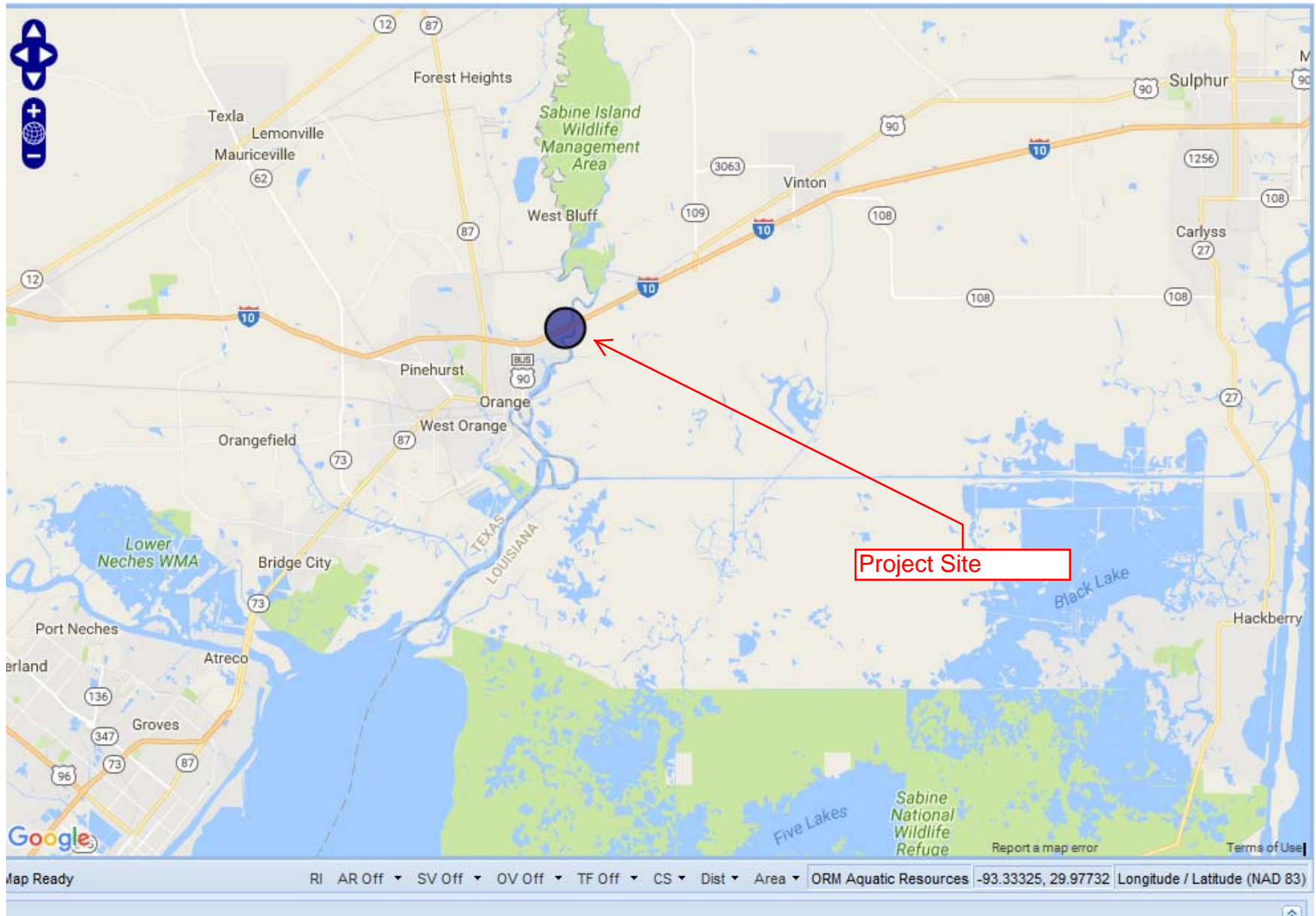
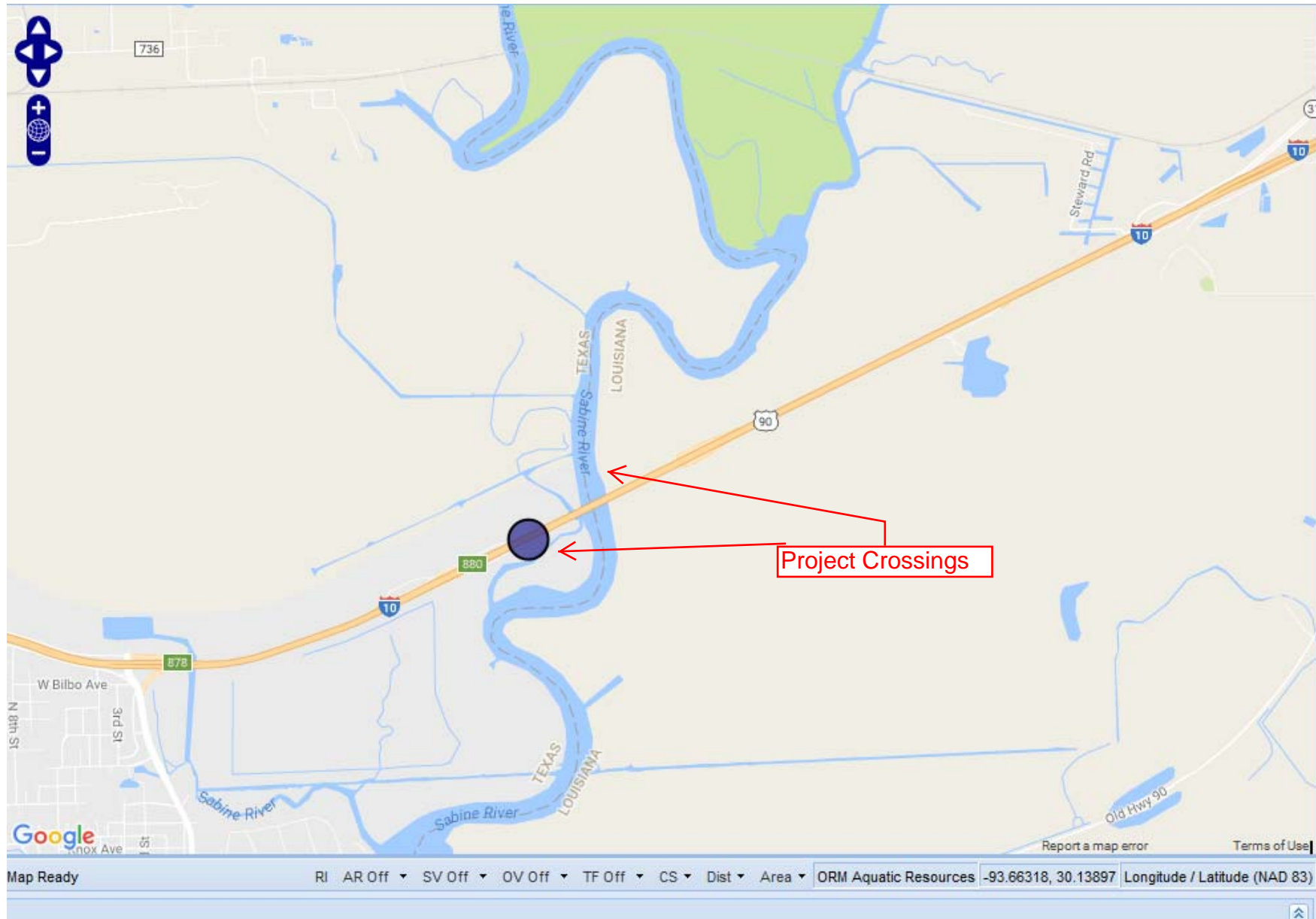


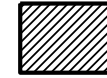
VICINITY MAP



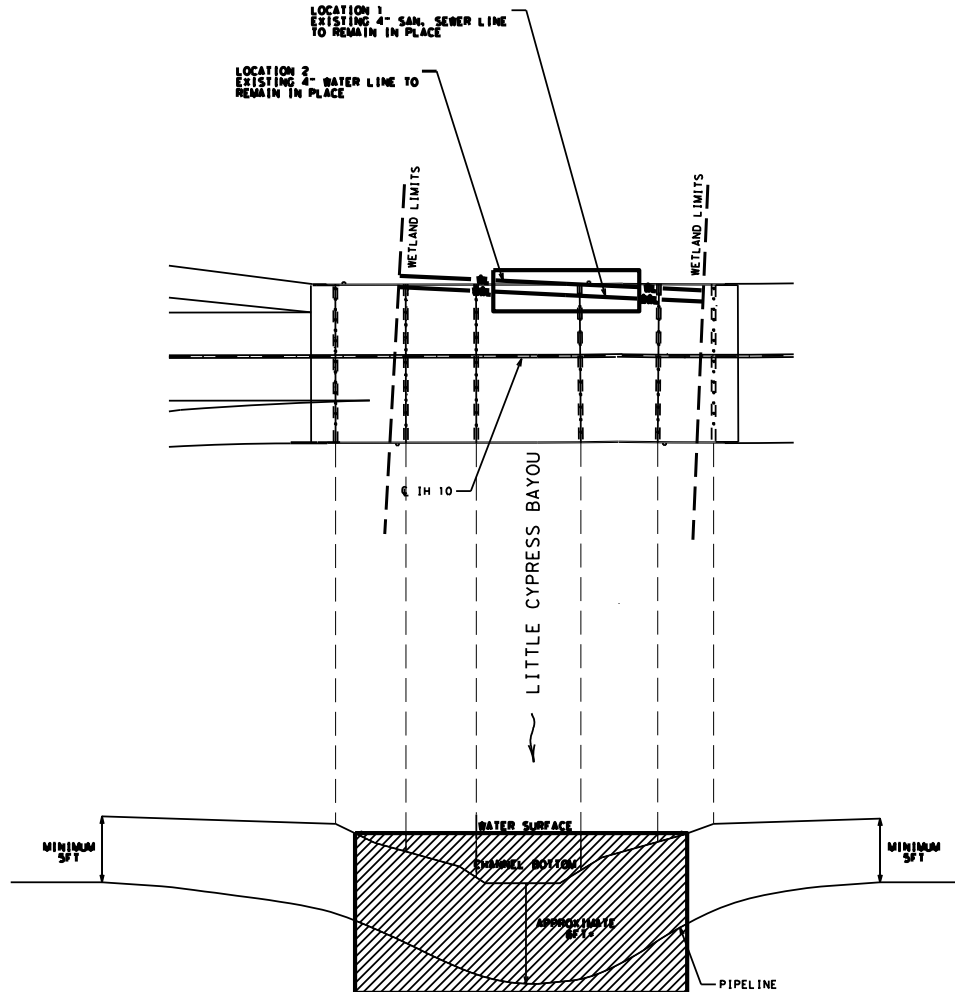
Project Site Map



Water Main and San. Sewer quantities within wetlands to remain in place				
Area ID/Description	Length	Pipe (O.D. - inches)	Volume (CF)	Volume (CY)
Location 1: 4" Sanitary Sewer	288	5	39.3	1.5
Location 2: 4" Water Main	288	5	39.3	1.5
TOTAL			78.6	3.0



JURISDICTIONAL ACTION AREA



ORIGINAL INSTALLATION PLANS ARE NOT AVAILABLE.
ESTIMATED DEPTH OF WATER AND SEWER LINE BELOW
THE CHANNEL BOTTOM IS 8 FEET.



IH 10
WETLAND IMPACT
DETAILS

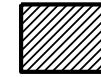
Texas Department of Transportation
SHEET 1 OF 2

CONT	SECT	JOB	HIGHWAY
0028	14	109	IH 10
DIST	COUNTY	SHEET NO.	
BMT	ORANGE	1	

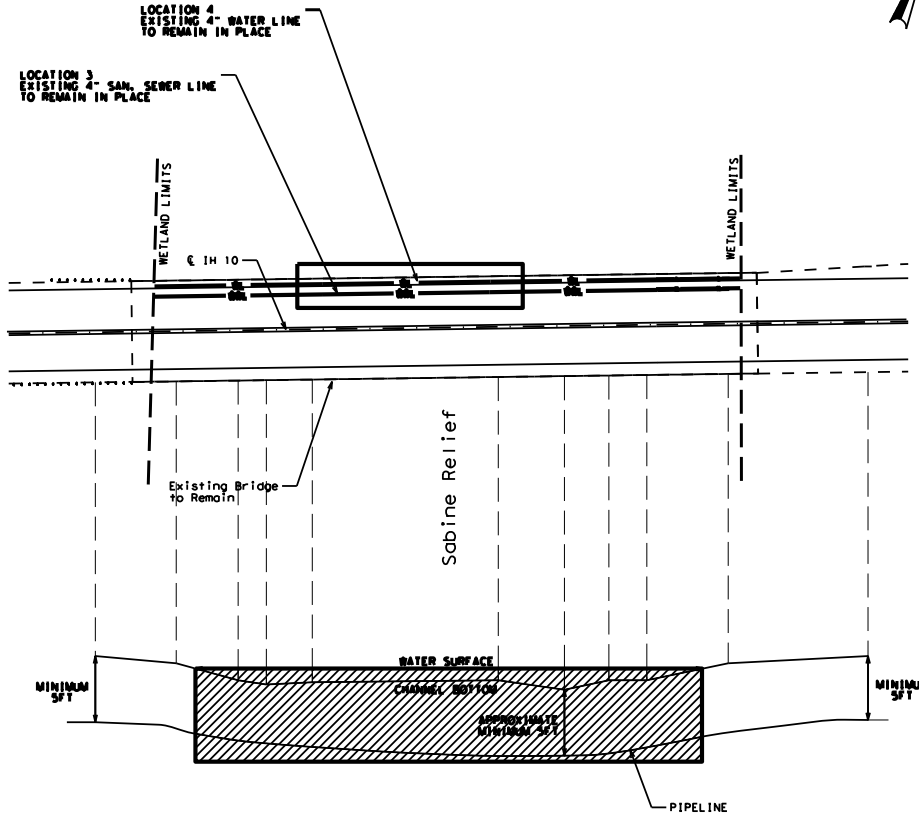
DATE: 12-6-16
FILE: F:\BUTAD\CSJ\PROJECT FILES\0028-14-109 LOCHNER-WILLIAM_BROSS\CONSTRUCTION\WETLAND_RESOLUTION\WETLAND_IMPACT_DETAILS.DGN

• 5 FT MINIMUM

Water Main and San. Sewer quantities within wetlands to remain in place				
Area ID/Description	Length	Pipe (O.D. - inches)	Volume (CF)	Volume (CY)
Location 3: 4" Sanitary Sewer	495	5	67.5	2.5
Location 4: 4" Water Main	495	5	67.5	2.5
TOTAL			135	5



JURISDICTIONAL ACTION AREA



ORIGINAL INSTALLATION PLANS ARE NOT AVAILABLE.
ESTIMATED DEPTH OF WATER AND SEWER LINE BELOW
THE CHANNEL BOTTOM IS 5 FEET.



IH 10
WETLAND IMPACT
DETAILS

Texas Department of Transportation
SHEET 2 OF 2

CONT	SECT	JOB	HIGHWAY
0028	14	109	IH 10
DIST	COUNTY	SHEET NO.	
BMT	ORANGE	2	

DATE: 12-8-16
FILE: \\BMT\AO\CSJ_PROJECT_FILES\0028-14-109_LOCINER-WILLIAM_BROS.CONSTRUCTION\WETLAND_RESOLUTION\WETLAND_IMPACT_DETAILS.DGN