

**Legend**

TXIT Berth

N

**Figure 1:  
Vicinity Map**

Texas International Terminal  
Environmental Analysis  
Offshore Dredge Material Disposal  
Galveston, Texas

Date: Apr 14, 2020	<b>LOYD</b> ENGINEERING, INC.
Prepared By: CG	
Project: SWG-2012-00602	



**Legend**

- TXIT Berth
- 5-mi Pumping Radius
- 10-mi Alternatives Search Radius
- TXIT PA
- Ship Channel Limits






0      500      1,000      2,000  
 Feet

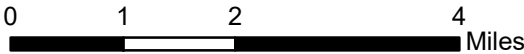
**Figure 2:**  
**TXIT Berth and PA Map**  
 Texas International Terminal  
 Environmental Analysis  
 Offshore Dredge Material Disposal  
 Galveston, Texas

Date: Apr 14, 2020	
Prepared By: CG	
Project: SWG-2012-00602	



**Legend**

-  TXIT Berth
-  5-mi Pumping Radius
-  10-mi Alternatives Search Radius
-  ODMDS
-  Ship Channels

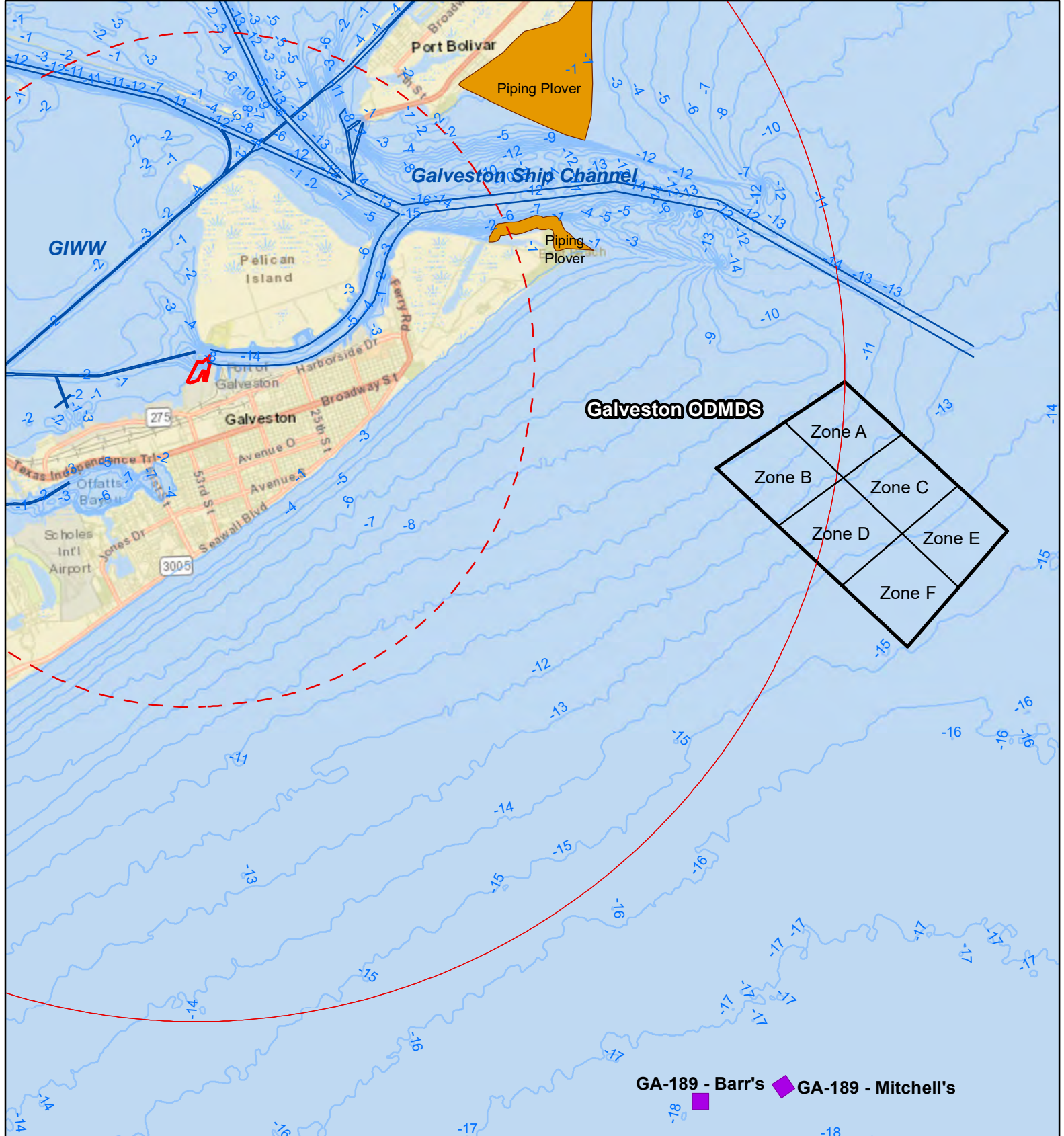


**Figure 7: Galveston ODMDS**

Texas International Terminal  
 Environmental Analysis  
 Offshore Dredge Material Disposal  
 Galveston, Texas

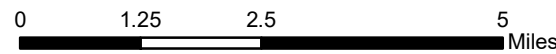
Date: Apr 14, 2020  
 Prepared By: CG  
 Project: SWG-2012-00602





**Legend**

- 5-mi Pumping Radius
- 10-mi Alternatives Search Radius
- Artificial Reef
- Critical Habitat Area
- ODMDS
- 10 mile radius
- Ship Channel
- TXIT Berth
- Bathymetry (m)



**Figure 8: Galveston ODMDS**  
 Texas International Terminal  
 Environmental Analysis  
 Offshore Dredge Material Disposal  
 Galveston, Texas

Date: Apr 14, 2020  
 Prepared By: CG  
 Project: SWG-2012-00602

