

SK-1

MANCHESTER TERMINAL, LLC  
 DREDGING AT SHIP DOCK  
 HOUSTON, TEXAS

**S H** **STANLEY SPURLING & HAMILTON, INC.**  
 Consulting Engineering Services  
 T.B.P.E. REGISTRATION #F-000175

3301 Edloe Street, Suite 200 Houston, Texas 77027  
 Phone 713-776-9433 Fax 713-776-2439

SCALE:      N.T.S.      DWN. BY:      JA       
 DATE:      03-02-15      APP. BY:      RHC       
 JOB NO.:      0411-0075A      DWG. NO.:      SK-1

PROPOSED 5.2 ACRES OF MAINTENANCE DREDGE AREA (APPROX. 68,400 CU. YD OF MATERIAL)

PREVIOUSLY AUTHORIZED DOCK EXTENSION AND DREDGING

150'

1500'

HOUSTON SHIP CHANNEL

1 SK-4



150'

1250'

BA YOU

1 SK-3

SIMS

1 SK-3

711'

PROPOSED 6.8 ACRES OF MAINTENANCE DREDGE AREA (APPROX. 24,000 CU. YD OF MATERIAL)

150'

UPLAND PLACEMENT AREA

# SITE PLAN

REVISED 07/24/17

SK-2

MANCHESTER TERMINAL, LLC  
DREDGING AT SHIP DOCK  
HOUSTON, TEXAS

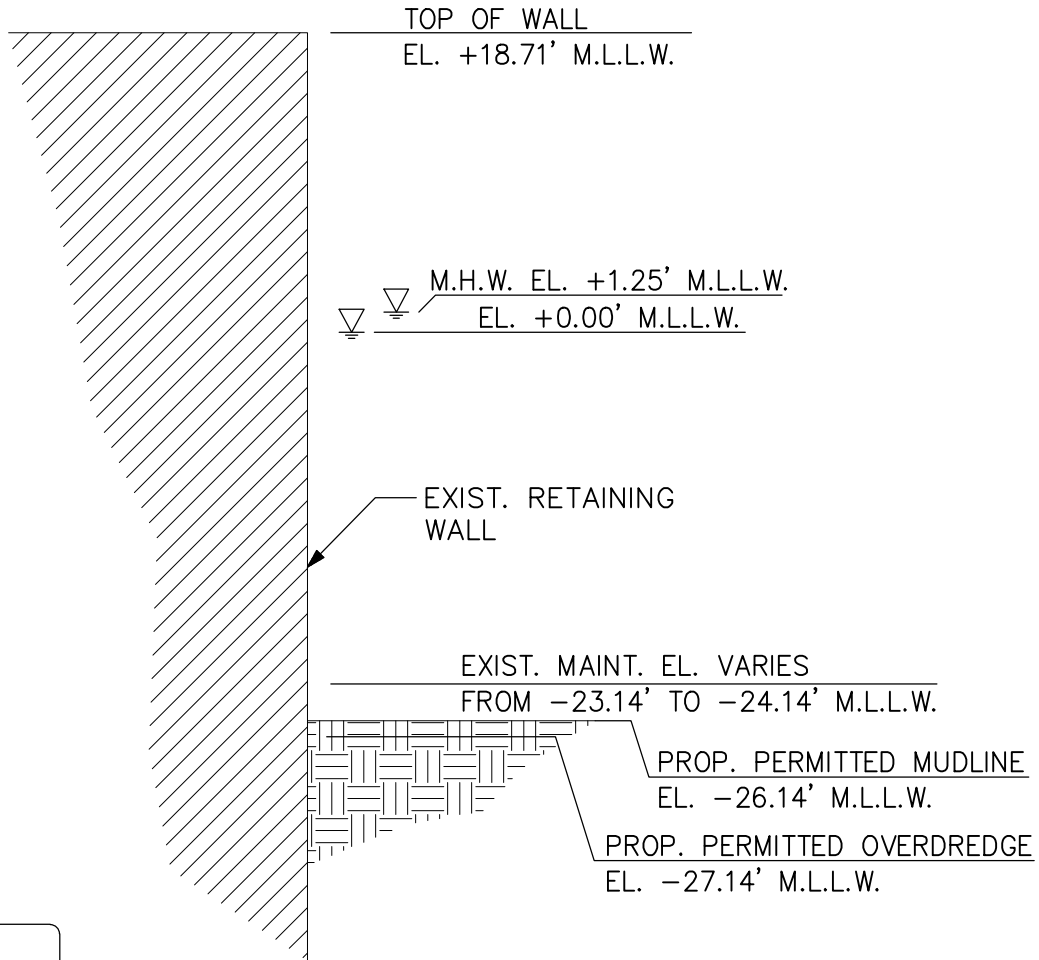


STANLEY SPURLING & HAMILTON, INC.

Consulting Engineering Services  
T.B.P.E. REGISTRATION #F-000175

3301 Edloe Street, Suite 200 Houston, Texas 77027  
Phone 713-776-9433 Fax 713-776-2439

SCALE: 1"=400' DWN. BY: TP  
DATE: 03-02-15 APP. BY: RHC  
JOB NO.: 0411-0075A DWG. NO.: SK-2



1

1" = 1'-0"

## Section

REVISED 07/24/17

SK-3

**MANCHESTER TERMINAL, LLC  
DREDGING AT SHIP DOCK  
HOUSTON, TEXAS**

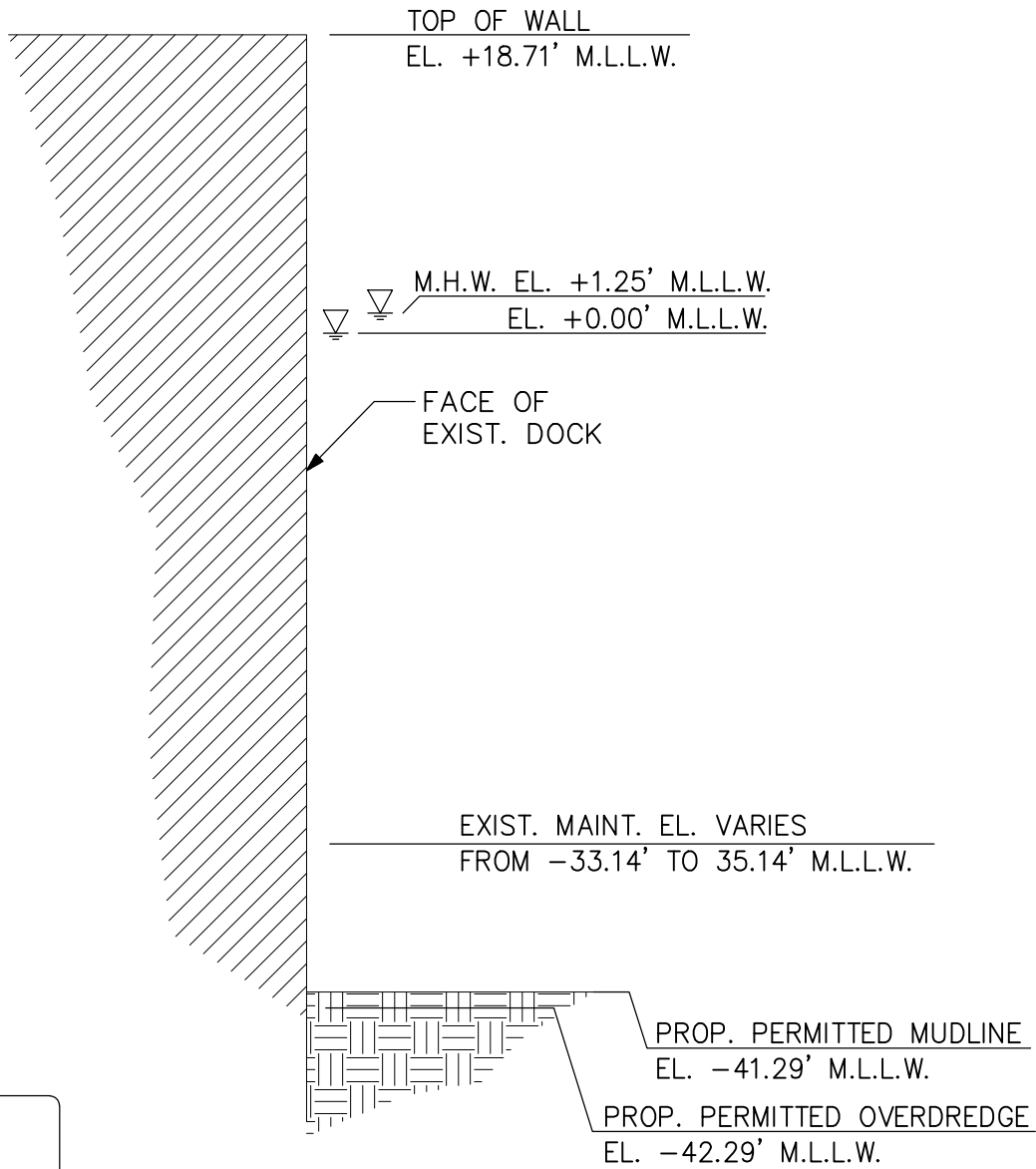


**STANLEY SPURLING & HAMILTON, INC.**

**Consulting Engineering Services  
T.B.P.E. REGISTRATION #F-000175**

3301 Edloe Street, Suite 200 Houston, Texas 77027  
Phone 713-776-9433 Fax 713-776-2439

SCALE: 1"=400' DWN. BY: JA  
DATE: 03-02-15 APP. BY: RHC  
JOB NO.: 0411-0075A DWG. NO.: SK-3



**1**

1" = 1'-0"

**Section**

REVISED 07/24/17

SK-4

**MANCHESTER TERMINAL, LLC  
DREDGING AT SHIP DOCK  
HOUSTON, TEXAS**

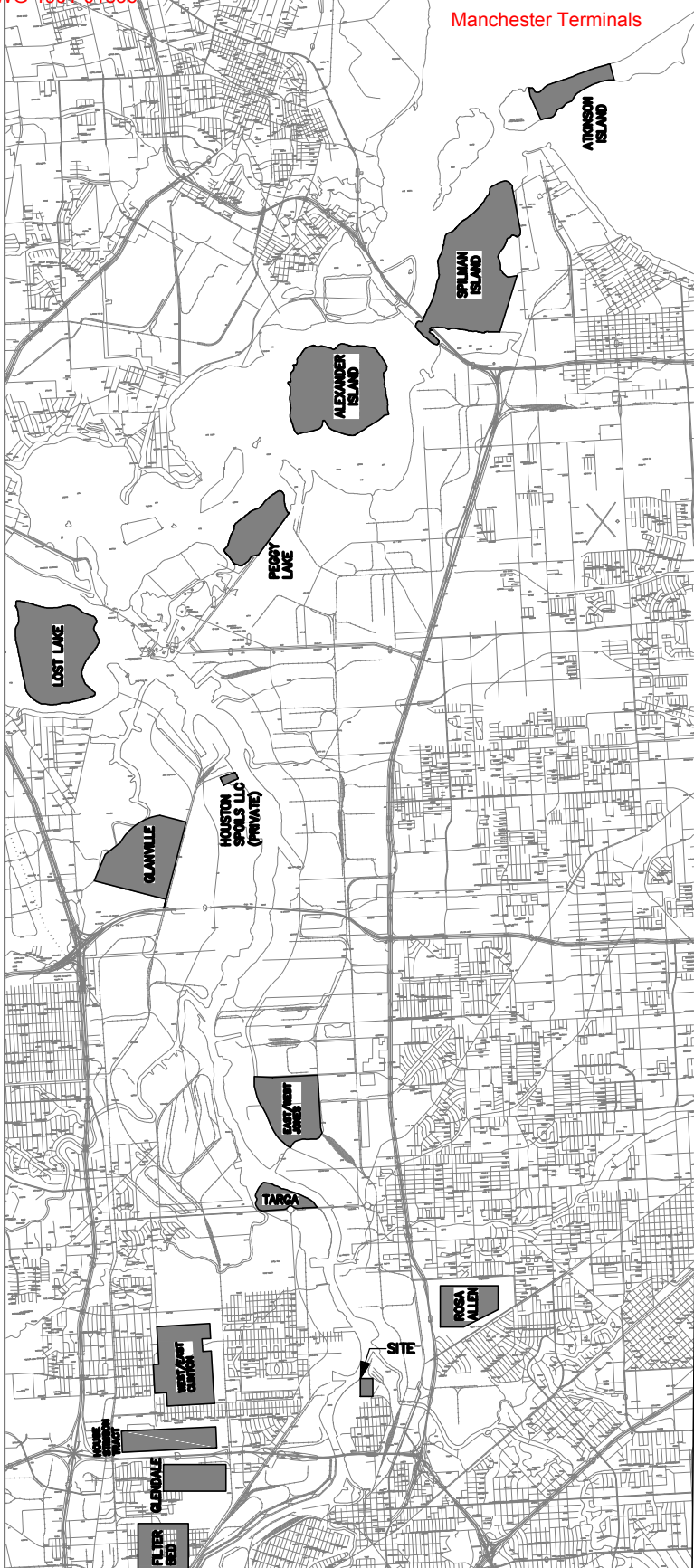


**STANLEY SPURLING & HAMILTON, INC.**

**Consulting Engineering Services  
T.B.P.E. REGISTRATION # F-000175**

SCALE: 1"=400'      DWN. BY: JA/TP  
 DATE: 03-27-17      APP. BY: RHC  
 JOB NO.: 0411-0075A      DWG. NO.: SK-3

**3301 Edloe Street, Suite 200 Houston, Texas 77027  
Phone 713-776-9433      Fax 713-776-2439**



1. FILTER BED
2. HOUSE STIMSON TRACT
3. WEST/EAST JONES
4. EAST/WEST CLINTON
5. TARGA – FORMERLY DYNEGY
6. GALENA PARK
7. GLENDALE
8. ROSA ALLEN
9. GLANVILLE
10. HOUSTON SPOILS LLC (PRIVATE)
11. LOST LAKE
12. PEGGY LAKE
13. ALEXANDER ISLAND
14. SPILMAN ISLAND
15. ATKINSON ISLAND

MODIFIED 10/31/17

SK-5

**MANCHESTER TERMINAL, LLC  
DREDGING AT SHIP DOCK  
HOUSTON, TEXAS**



**STANLEY SPURLING & HAMILTON, INC.**

**Consulting Engineering Services**  
T.B.P.E. REGISTRATION #F-000175

3301 Edloe Street, Suite 200 Houston, Texas 77027  
Phone 713-776-9433 Fax 713-776-2439

SCALE: N.T.S. DWN. BY: JA  
DATE: 03-02-15 APP. BY: RHC  
JOB NO.: 0411-0075A DWG. NO.: SK-5