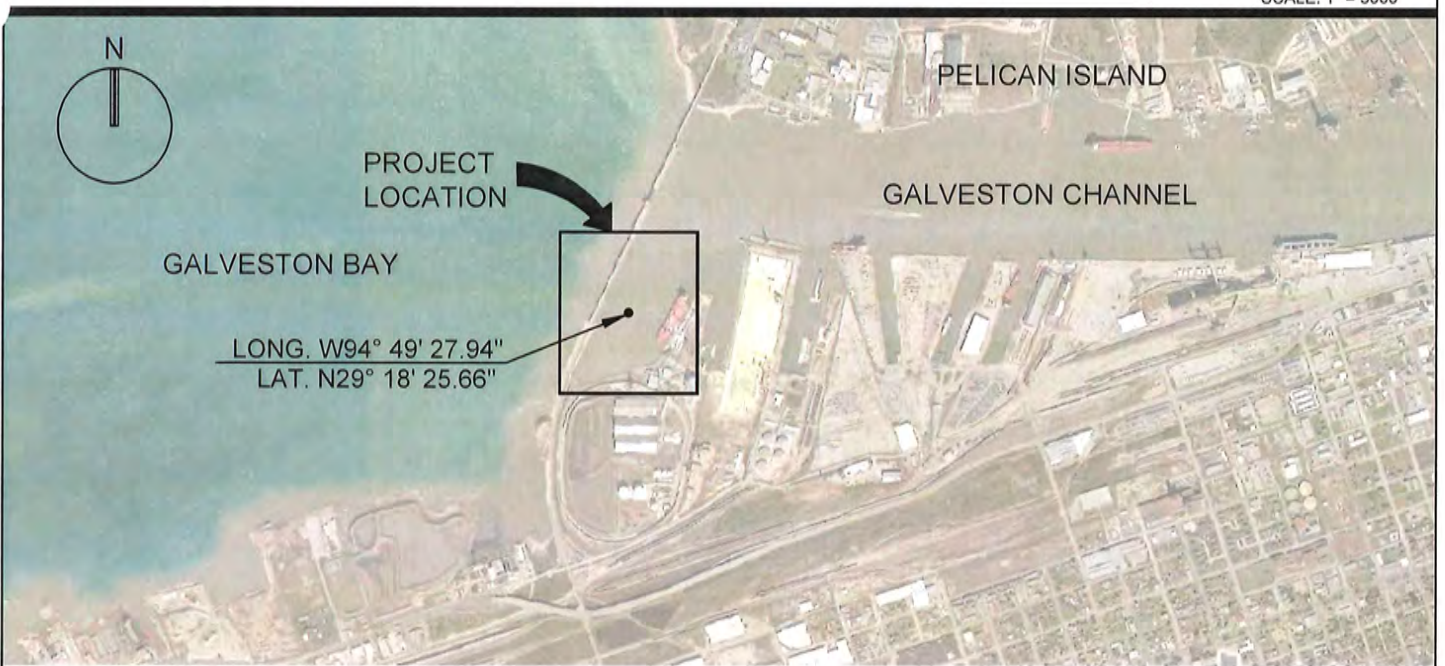


File Name: C:\009 - Texas International Terminals\Permit Drawings\1 Cover Sheet.dwg Layout Name: T-1 Plot Time: Tuesday, Sept 18, 2018 3:16pm Plotted by: DEAG6952



VICINITY MAP  
SCALE: 1" = 5000'



LOCATION MAP  
SCALE: 1" = 2000'

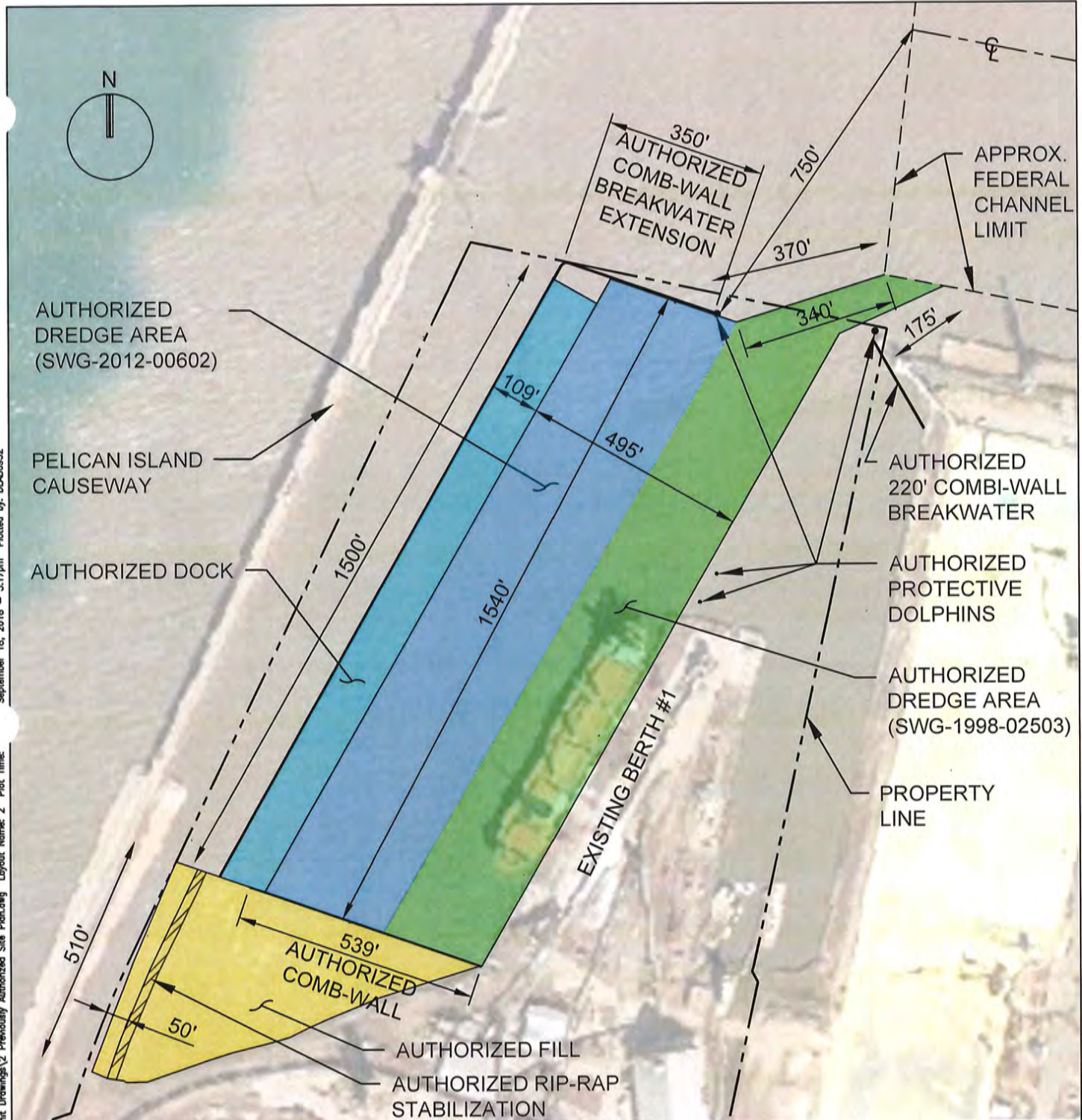
AMENDMENT (SWG-2012-00602)

**ATKINS**  
 Member of the SNC Lavalin Group  
 17220 Katy Freeway, Suite 200  
 Houston, Texas 77094  
 713-576-8500  
 TBPEReg. No. F-474

BERTHS 2 AND 3  
 COVER SHEET  
 TEXAS INTERNATIONAL TERMINALS  
 GALVESTON, TEXAS

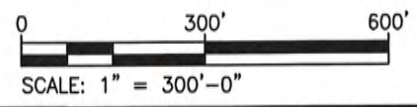


JOB No.  
100062009  
 CAD FILE  
1  
 SHEET NUMBER  
1/19



**LEGEND: AUTHORIZED ACTIVITIES (SWG-2012-00602)**

	AUTHORIZED DREDGE FOOTPRINT (SWG-2012-00602) - 10.37 AC.
	AUTHORIZED DREDGE FOOTPRINT (SWG-1998-02503) - 7.85 AC.
	AUTHORIZED FILL AREA - 4.61 AC.
	AUTHORIZED RIP-RAP STABILIZATION
	AUTHORIZED DOCK - 3.75 AC.



AMENDMENT (SWG-2012-00602)

**ATKINS**  
 Member of the SNC Lavalin Group  
 17220 Katy Freeway, Suite 200  
 Houston, Texas 77094  
 713-576-8500  
 TBPEReg. No. F-474

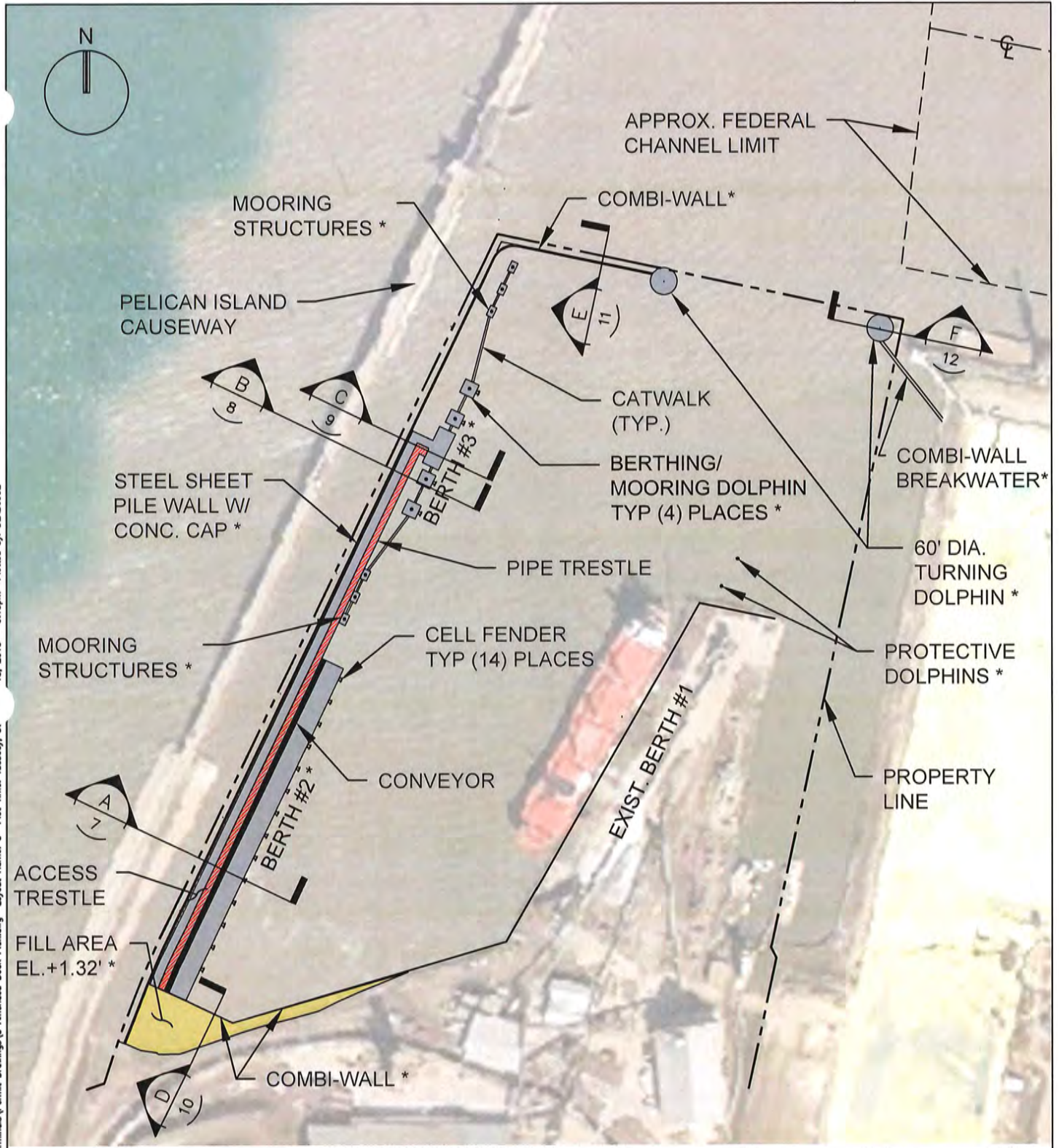
BERTHS 2 AND 3  
 PREVIOUSLY AUTHORIZED SITE PLAN  
 TEXAS INTERNATIONAL TERMINALS  
 GALVESTON, TEXAS



JOB No. 100062009  
 CAD FILE 2  
 SHEET NUMBER 2/19

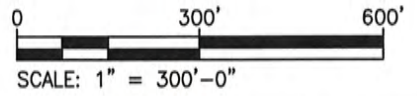
File Name: I:\009 - Texas International Terminals\Permit Drawings\2 Previously Authorized Site Plan.dwg Layout Name: 2 Plot Time: September 18, 2018 - 3:17pm Plotted by: DEB8952

File Name: C:\009 - Texas International Terminals\Permit Drawings\3 Amended Dock Plan.dwg Layout Name: 3 Plot Time: Tuesday, 5/16/2016 3:18pm Plotted by: DE/66952



**LEGEND:**  
 FILL AREA (0.67AC):  
 TO EL. +1.32' (MHW) = 4,700 CY

\* PREVIOUSLY AUTHORIZED  
 STRUCTURE/FILL STREAMLINED FOR  
 BETTER SHIP ACCESS AND SAFETY  
**AMENDMENT (SWG-2012-00602)**



**ATKINS**  
 Member of the SNC Lavalin Group  
 17220 Katy Freeway, Suite 200  
 Houston, Texas 77094  
 713-576-8500  
 TBPEReg. No. F-474

BERTHS 2 AND 3  
 AMENDED DOCK PLAN  
 TEXAS INTERNATIONAL TERMINALS  
 GALVESTON, TEXAS



JOB No.  
 100062009  
 CAD FILE  
 3  
 SHEET NUMBER  
**3/19**

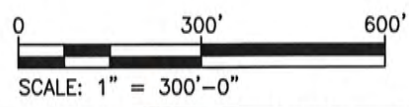
File Name: C:\009 - Texas International Terminals\Permit Drawings\4 Proposed Site Planning Layout Name: 4 Plot Time: Tuesday, Sep 18, 2018 - 3:19pm Plotted by: DGA68652



COORDINATE TABLE				
NO.	NORTHING	EASTING	LATITUDE	LONGITUDE
1	13684035.28	3299212.36	N29° 18' 35.91"	W94° 49' 24.30"
2	13683945.11	3299575.08	N29° 18' 34.89"	W94° 49' 20.24"
3	13683839.52	3300063.27	N29° 18' 33.67"	W94° 49' 14.78"
4	13682375.13	3298414.82	N29° 18' 19.67"	W94° 49' 33.97"

NOTE: COORDINATES SHOWN ARE REFERENCED TO TEXAS STATE PLANE COORDINATE SYSTEM, SOUTH CENTRAL ZONE NAD83

**LEGEND:**  
 FILL AREA (0.67AC):  
 TO EL. +1.32' (MHW) = 4,700 CY



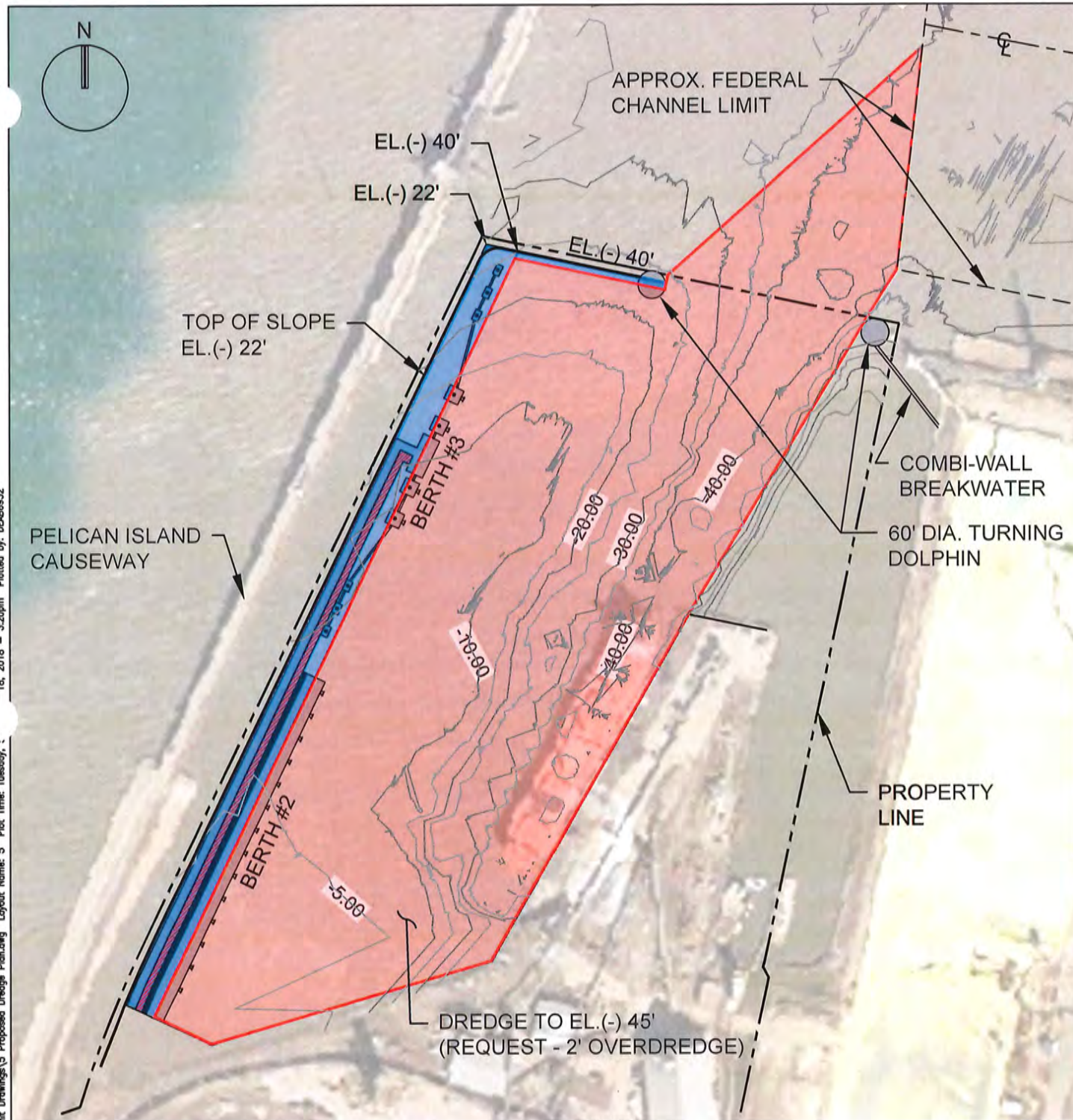
AMENDMENT (SWG-2012-00602)

**ATKINS**  
 Member of the SNC Lavalin Group  
 17220 Katy Freeway, Suite 200  
 Houston, Texas 77094  
 713-576-8500  
 TBPEReg. No. F-474

BERTHS 2 AND 3  
 PROPOSED SITE PLAN  
 TEXAS INTERNATIONAL TERMINALS  
 GALVESTON, TEXAS



JOB No.  
100062009  
 CAD FILE  
4  
 SHEET NUMBER  
4/19

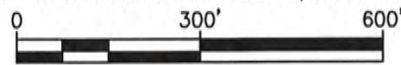


File Name: C:\09 - Texas International Terminals\Permit Drawings\5 Proposed Dredge Planning Layout Name: 5 Plot Time: Tuesday, 11/16/2016 3:20pm Plotted by: DE166952

**LEGEND:**

	EL.(-) 45' PROPOSED DREDGE AREA: 30.0 AC. AND 1,193,650 CY
	3:1 SLOPED AREAS: 3.0 AC. AND 212,000 CY
TOTAL AREA: 33.0 AC. AND 1,405,650 CY	

**NOTE:**  
CONTOURS SHOWN DERIVED FROM SURVEY PERFORMED BY CALLAN MARINE, DATED MARCH 30, 2018 AND FROM NOAA HYDROGRAPHIC SURVEY PERFORMED OCTOBER 2, 1995.



AMENDMENT (SWG-2012-00602)

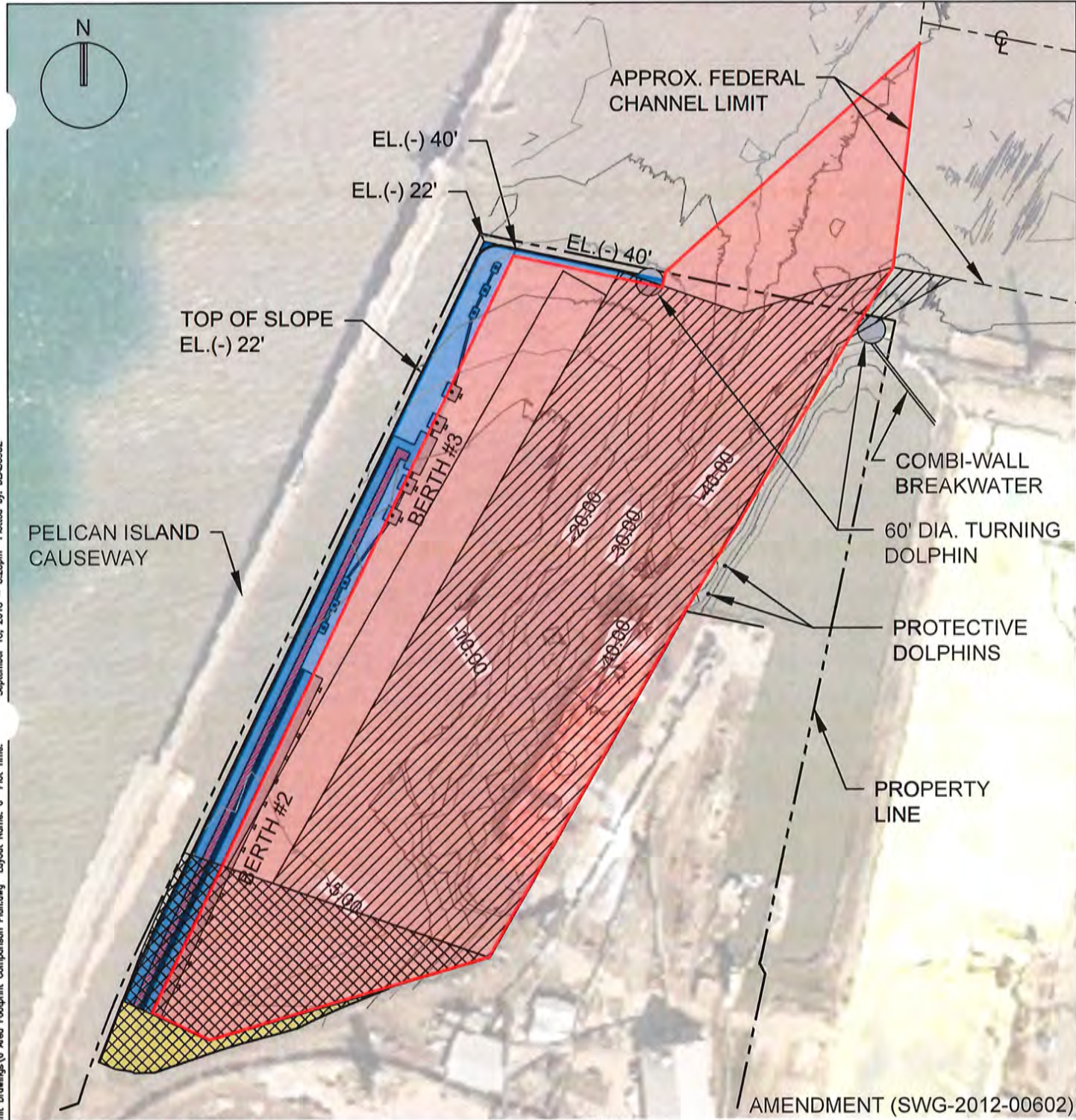
SCALE: 1" = 300'-0"

**ATKINS**  
Member of the SNC Lavalin Group  
17220 Katy Freeway, Suite 200  
Houston, Texas 77094  
713-576-8500  
TBPEReg. No. F-474

BERTHS 2 AND 3  
PROPOSED DREDGE PLAN  
TEXAS INTERNATIONAL TERMINALS  
GALVESTON, TEXAS



JOB No.  
100062009  
CAD FILE  
5  
SHEET NUMBER  
5/19

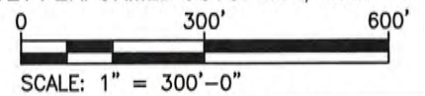


AMENDMENT (SWG-2012-00602)

September 18, 2018 - 3:23pm Picked by: DBJ68652  
2009 - Texas International Terminals\Permit Drawings\6 Area Footprint Comparison Plan.dwg Layout: Name: 6 Pick Time:  
File Name: I

LEGEND:	
	EL.(-) 45' DREDGE AREA: 30.0 AC. AND 1,193,650 CY
	3:1 SLOPED AREAS: 3.0 AC. AND 212,000 CY
	FILL AREA - 0.67 AC.
	AUTHORIZED FILL AREA - 4.61 AC.
	AUTHORIZED DREDGE AREA - 18.22 AC.

NOTE:  
CONTOURS SHOWN DERIVED FROM SURVEY PERFORMED BY CALLAN MARINE, DATED MARCH 30, 2018 AND FROM NOAA HYDROGRAPHIC SURVEY PERFORMED OCTOBER 2, 1995.



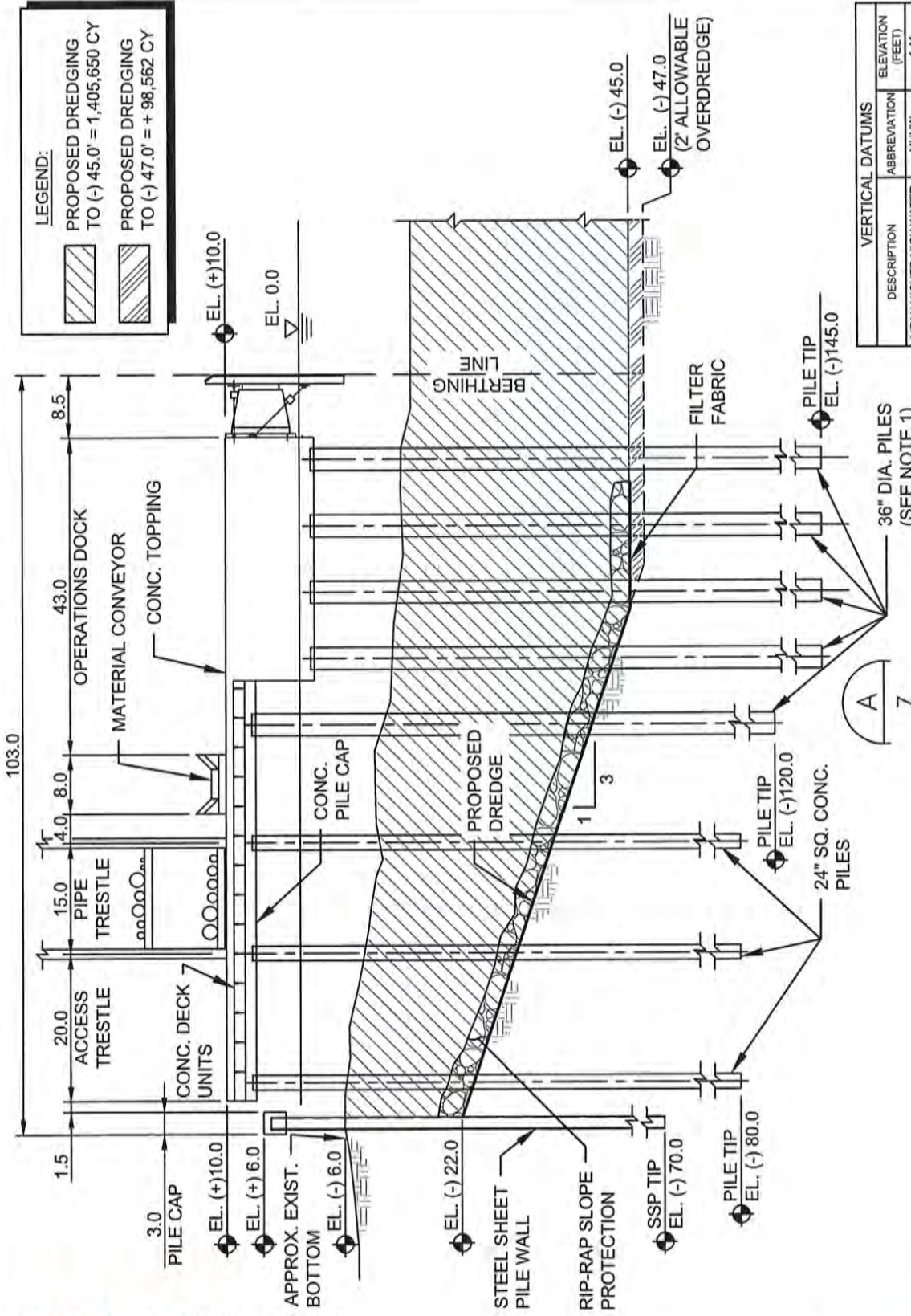
**ATKINS**  
Member of the SNC Lavalin Group  
17220 Katy Freeway, Suite 200  
Houston, Texas 77094  
713-576-8500  
TBPEReg. No. F-474

BERTHS 2 AND 3  
AREA FOOTPRINT COMPARISON PLAN  
TEXAS INTERNATIONAL TERMINALS  
GALVESTON, TEXAS

TEXAS INTERNATIONAL TERMINALS

JOB No.  
100062009  
CAD FILE  
6  
SHEET NUMBER  
6/19

File Name: C:\009 - Texas International Terminals\Permit Drawings\7-11 Typical Berth Sections.dwg Layout Name: 7 Plot Time: Tues, nber 18, 2018 - 3:25pm Plotted by: DEJ68952



**LEGEND:**

	PROPOSED DREDGING TO (-) 45.0' = 1,405,650 CY
	PROPOSED DREDGING TO (-) 47.0' = + 98,562 CY

**VERTICAL DATUMS**

DESCRIPTION	ABBREVIATION	ELEVATION (FEET)
MEAN HIGHER-HIGH WATER	MHHW	1.41
MEAN HIGH WATER	MHW	1.32
MEAN SEA LEVEL	MSL	0.83
MEAN LOW WATER	MLW	0.30
MEAN LOWER-LOW WATER	MLLW	0.00

SOURCE: <https://tidesandcurrents.noaa.gov/datum>  
 Station: 8771450, Galveston Pier 21, TX Epoch: 1983-2001



AMENDMENT (SWG-2012-00602)

- NOTES:**
1. THE 36 INCH DIAMETER PILE CAN BE EITHER STEEL OR CONCRETE.
  2. ALL ELEVATIONS ARE BASED ON MLLW.
  3. SEE SHEETS 14 & 15 FOR DREDGE MATERIAL PLACEMENT LOCATIONS.
  4. DOCK DIMENSIONS SHOWN ARE APPROXIMATE.
  5. DREDGE MATERIAL MAY BE REMOVED USING HYDRAULIC OR MECHANICAL METHODOLOGY.
  6. APPLICANT PROPOSES MAINTENANCE DREDGE FOR A 10 YEAR PERIOD (SWG-1998-02523).
  7. APPROXIMATELY 1,405,650 CY TO (-) 45.0'; ADDITIONAL 98,562 CY TO (-) 47.0'.

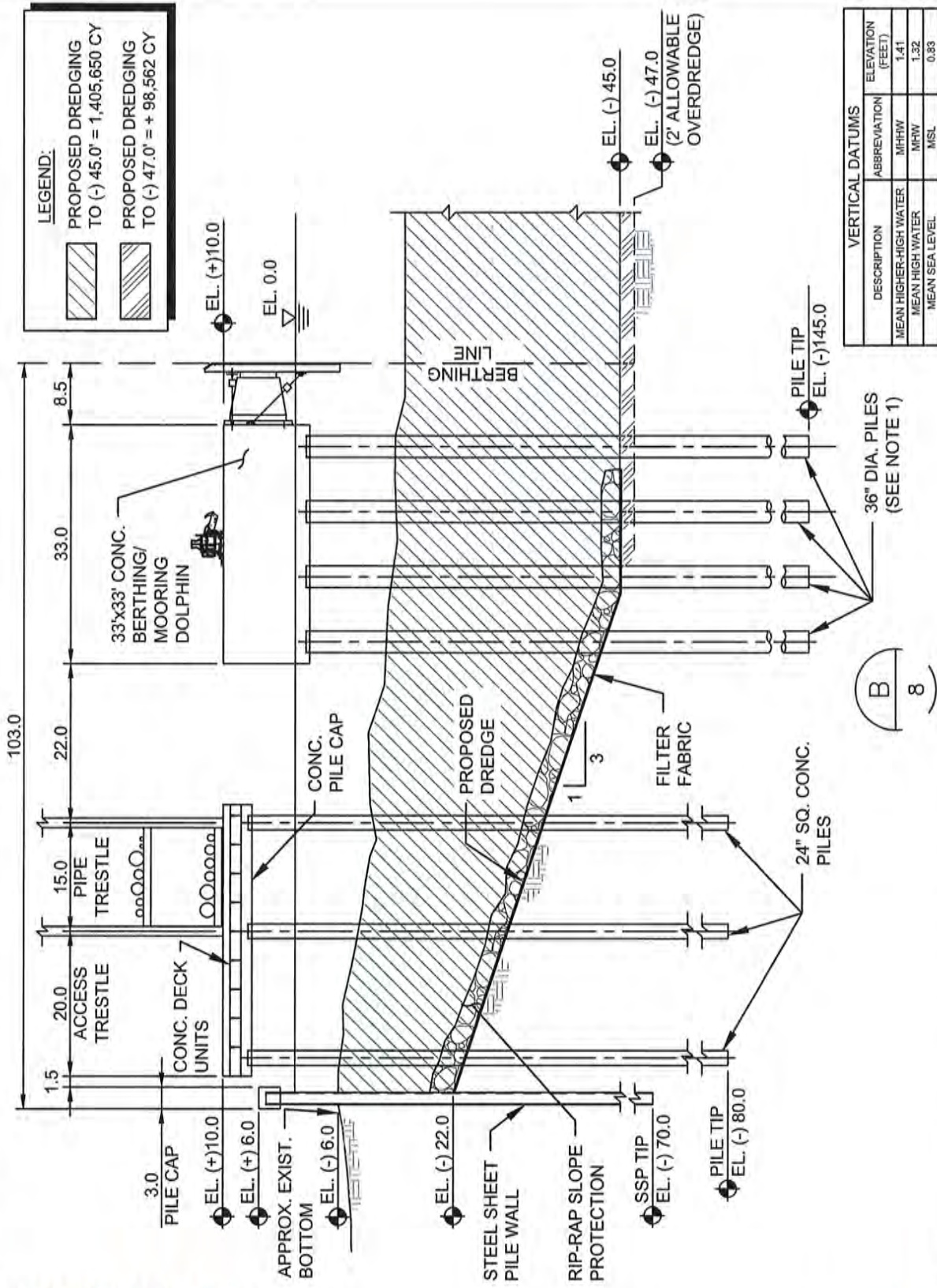
**ATKINS**  
 Member of the SNC Lavalin Group  
 17220 Katy Freeway, Suite 200  
 Houston, Texas 77094  
 713-576-8500  
 TBPEReg. No. F-474

BERTHS 2 AND 3  
 TYPICAL BERTH 2 SECTION  
 TEXAS INTERNATIONAL TERMINALS  
 GALVESTON, TEXAS



<b>JOB No.</b> 100062009
<b>CAD FILE</b> 7
<b>SHEET NUMBER</b> 7/19

File Name: C:\09 - Texas International Terminals\Permit Drawings\7-11 Typical Berth Sections.dwg Layout Name: 8 Plot Time: Tuesday, October 18, 2016 - 3:25pm Plotted by: DBAB9552



**LEGEND:**

	PROPOSED DREDGING TO (-) 45.0' = 1,405,650 CY
	PROPOSED DREDGING TO (-) 47.0' = + 98,562 CY

**VERTICAL DATUMS**

DESCRIPTION	ABBREVIATION	ELEVATION (FEET)
MEAN HIGHER-HIGH WATER	MHHW	1.41
MEAN HIGH WATER	MHW	1.32
MEAN SEA LEVEL	MSL	0.83
MEAN LOW WATER	MLW	0.30
MEAN LOWER-LOW WATER	MLLW	0.00

SOURCE: <https://tidesandcurrents.noaa.gov/datums>  
Station: 8771450, Galveston Pier 21, TX Epoch: 1983-2001



AMENDMENT (SWG-2012-00602)

- NOTES:**
1. THE 36 INCH DIAMETER PILE CAN BE EITHER STEEL OR CONCRETE.
  2. ALL ELEVATIONS ARE BASED ON MLLW.
  3. SEE SHEETS 14 & 15 FOR DREDGE MATERIAL PLACEMENT LOCATIONS.
  4. DOCK DIMENSIONS SHOWN ARE APPROXIMATE.
  5. DREDGE MATERIAL MAY BE REMOVED USING HYDRAULIC OR MECHANICAL METHODOLOGY.
  6. APPLICANT PROPOSES MAINTENANCE DREDGE FOR A 10 YEAR PERIOD (SWG-1998-02523).
  7. APPROXIMATELY 1,405,650 CY TO (-) 45.0'; ADDITIONAL 98,562 CY TO (-) 47.0'.

**ATKINS**  
Member of the SNC Lavalin Group  
17220 Katy Freeway, Suite 200  
Houston, Texas 77094  
713-576-8500  
TBPEReg. No. F-474

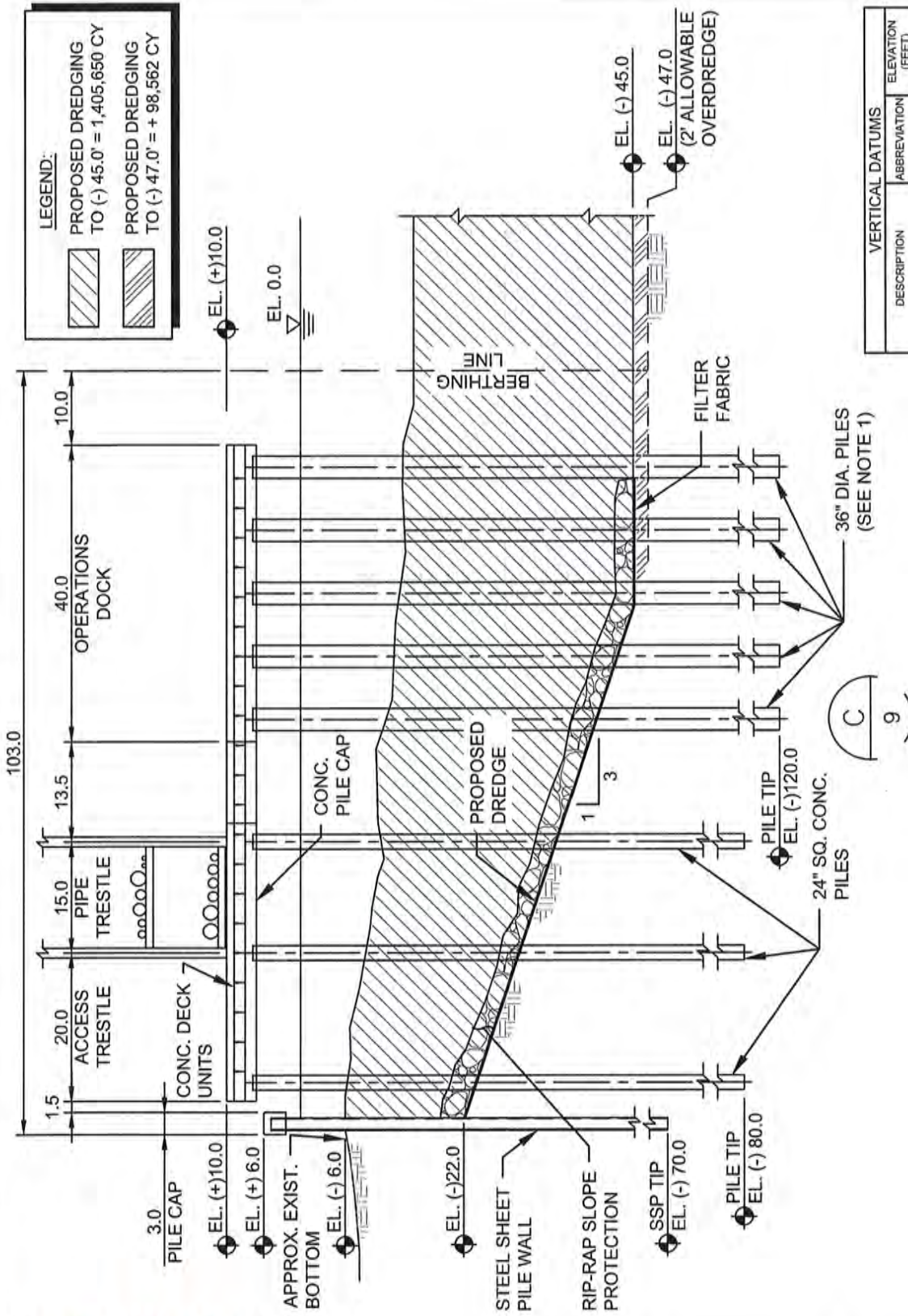
BERTHS 2 AND 3  
TYPICAL BERTH 3 SECTION AT DOLPHIN  
TEXAS INTERNATIONAL TERMINALS  
GALVESTON, TEXAS



JOB No. 100062009  
CAD FILE 8  
SHEET NUMBER 8/19



File Name: L:\2009 - Texas International Terminals\Permit Drawings\7-11 Typical Berth Sections.dwg Layout Name: 9 Plot Time: Tues, mber 18, 2018 - 3:25pm Plotted by: DEAB952



DESCRIPTION	ABBREVIATION	ELEVATION (FEET)
MEAN HIGHER-HIGH WATER	MHHW	1.41
MEAN HIGH WATER	MHW	1.32
MEAN SEA LEVEL	MSL	0.83
MEAN LOW WATER	MLW	0.30
MEAN LOWER-LOW WATER	MLLW	0.00

SOURCE: <https://tidesandcurrents.noaa.gov/datums>  
 Station: 8771450, Galveston Pier 21, TX Epoch: 1983-2001



AMENDMENT (SWG-2012-00602)

- NOTES:
1. THE 36 INCH DIAMETER PILE CAN BE EITHER STEEL OR CONCRETE.
  2. ALL ELEVATIONS ARE BASED ON MLLW.
  3. SEE SHEETS 14 & 15 FOR DREDGE MATERIAL PLACEMENT LOCATIONS.
  4. DOCK DIMENSIONS SHOWN ARE APPROXIMATE.
  5. DREDGE MATERIAL MAY BE REMOVED USING HYDRAULIC OR MECHANICAL METHODOLOGY.
  6. APPLICANT PROPOSES MAINTENANCE DREDGE FOR A 10 YEAR PERIOD (SWG-1998-02523).
  7. APPROXIMATELY 1,405,650 CY TO (-) 45.0'; ADDITIONAL 98,562 CY TO (-) 47.0'.

**ATKINS**  
 Member of the SNC Lavalin Group  
 17220 Katy Freeway, Suite 200  
 Houston, Texas 77094  
 713-576-8500  
 TBPEReg. No. F-474

BERTHS 2 AND 3  
 TYPICAL BERTH 3 SECTION  
 TEXAS INTERNATIONAL TERMINALS  
 GALVESTON, TEXAS

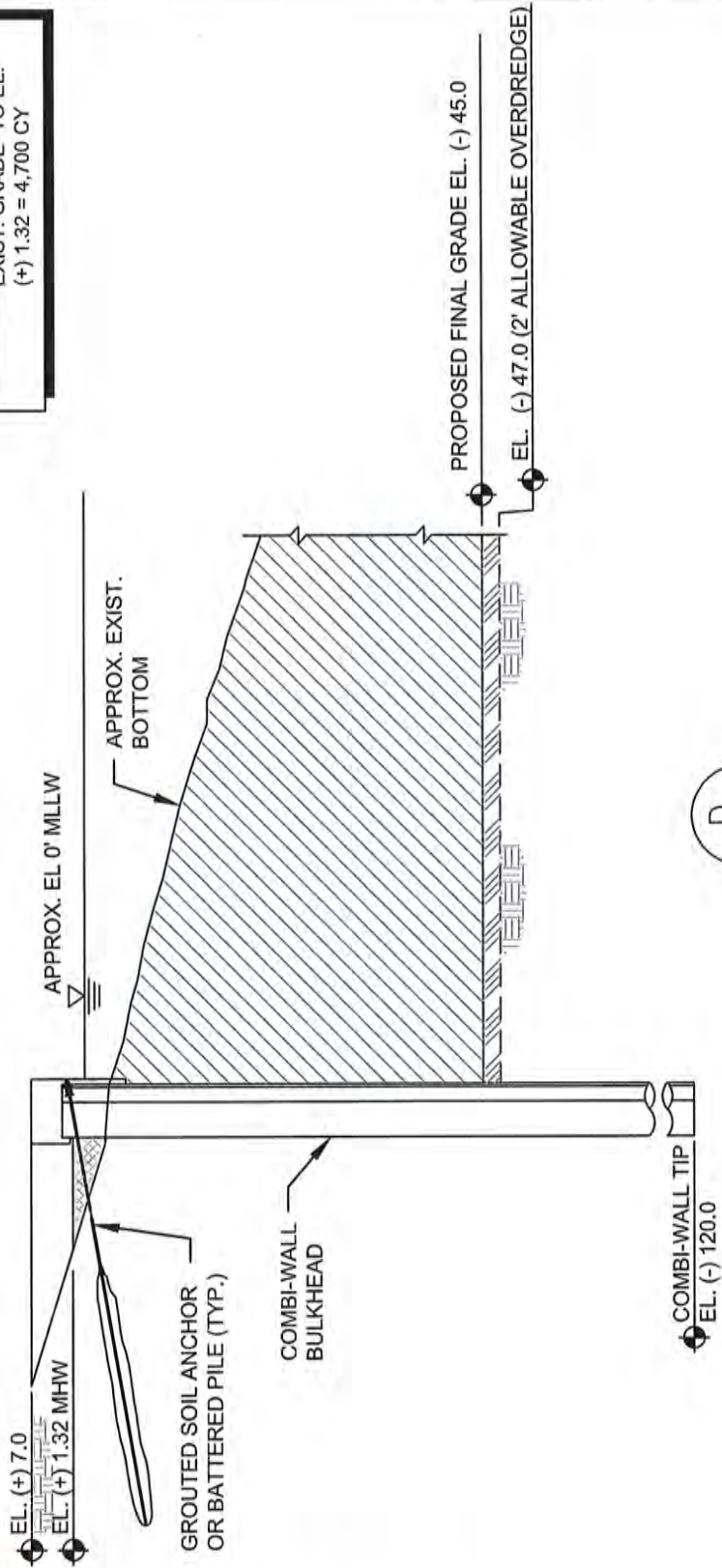


JOB No. 100062009  
 CAD FILE  
 SHEET NUMBER 9/19

File Name: C:\009 - Texas International Terminals\Permit Drawings\7-11 Typical Berth Sections.dwg Layout Name: 10 Plot Time: Tues, November 16, 2016 - 3:26pm Plotted by: DE465952

**LEGEND:**

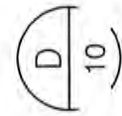
	PROPOSED DREDGING TO (-) 45.0' = 1,405,650 CY
	PROPOSED DREDGING TO (-) 47.0' = + 98,562 CY
	AUTHORIZED FILL - EXIST. GRADE TO EL. (+) 1.32 = 4,700 CY



**VERTICAL DATUMS**

DESCRIPTION	ABBREVIATION	ELEVATION (FEET)
MEAN HIGHER-HIGH WATER	MHHW	1.41
MEAN HIGH WATER	MHW	1.32
MEAN SEA LEVEL	MSL	0.83
MEAN LOW WATER	MLW	0.30
MEAN LOWER-LOW WATER	MLLW	0.00

SOURCE: <https://tidesandcurrents.noaa.gov/datum>  
 Station: 8771450, Galveston Pier 21, TX Epoch: 1983-2001



AMENDMENT (SWG-2012-00602)

NOTES:

1. THE 36 INCH DIAMETER PILE CAN BE EITHER STEEL OR CONCRETE.
2. ALL ELEVATIONS ARE BASED ON MILLW, EXCEPT WHERE NOTED.
3. SEE SHEETS 14 & 15 FOR DREDGE MATERIAL PLACEMENT LOCATIONS.
4. DOCK DIMENSIONS SHOWN ARE APPROXIMATE.
5. DREDGE MATERIAL MAY BE REMOVED USING HYDRAULIC OR MECHANICAL METHODOLOGY.
6. APPLICANT PROPOSES MAINTENANCE DREDGE FOR A 10 YEAR PERIOD (SWG-1998-02523).
7. APPROXIMATELY 1,405,650 CY TO (-) 45.0'; ADDITIONAL 98,562 CY TO (-) 47.0'.



Member of the SNC Lavalin Group  
 17220 Katy Freeway, Suite 200  
 Houston, Texas 77094  
 713-576-8500  
 TBPEReg. No. F-474

BERTHS 2 AND 3  
 TYPICAL SOUTHERN BERTH SECTION  
 TEXAS INTERNATIONAL TERMINALS  
 GALVESTON, TEXAS

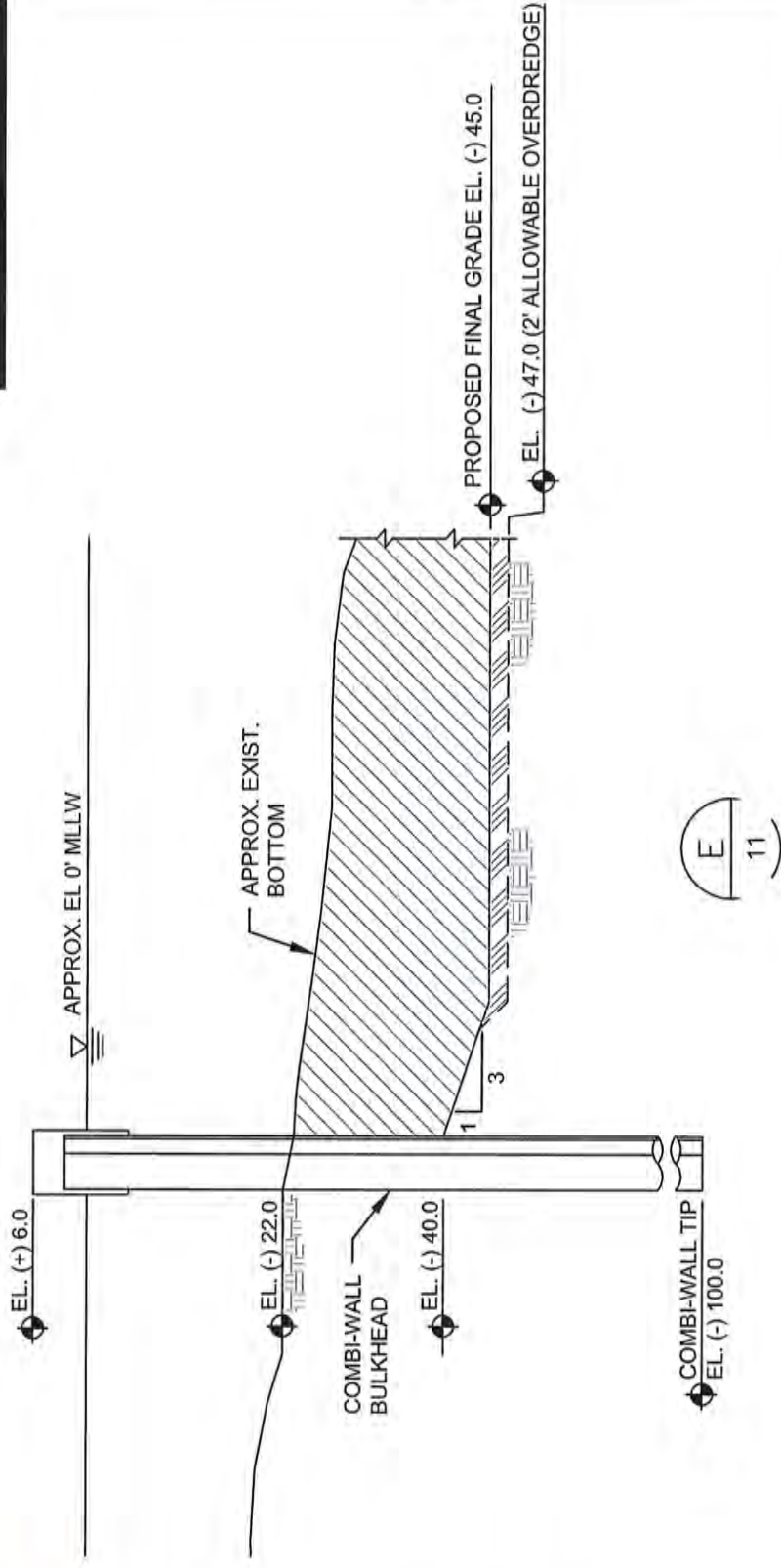


JOB No. 100062009  
 CAD FILE 10  
 SHEET NUMBER 10/19

2008 - Texas International Terminals\Permit Drawings\7-11 Typical Berth Sections.dwg Layout Name: 11 Plot Time: Tue, December 18, 2018 - 3:26pm Plotted by: DEX68952

**LEGEND:**

	PROPOSED DREDGING TO (-) 45.0' = 1,405,650 CY
	PROPOSED DREDGING TO (-) 47.0' = + 98,562 CY



DESCRIPTION	ABBREVIATION	ELEVATION (FEET)
MEAN HIGHER-HIGH WATER	MHHW	1.41
MEAN HIGH WATER	MHW	1.32
MEAN SEA LEVEL	MSL	0.83
MEAN LOW WATER	MLW	0.30
MEAN LOWER-LOW WATER	MLLW	0.00

SOURCE: <https://tidesandcurrents.noaa.gov/datum>  
 Station: 8771450, Galveston Pier 21, TX Epoch: 1983-2001



- NOTES:**
1. THE 36 INCH DIAMETER PILE CAN BE EITHER STEEL OR CONCRETE.
  2. ALL ELEVATIONS ARE BASED ON MLLW.
  3. SEE SHEETS 14 & 15 FOR DREDGE MATERIAL PLACEMENT LOCATIONS.
  4. DOCK DIMENSIONS SHOWN ARE APPROXIMATE.
  5. DREDGE MATERIAL MAY BE REMOVED USING HYDRAULIC OR MECHANICAL METHODOLOGY.
  6. APPLICANT PROPOSES MAINTENANCE DREDGE FOR A 10 YEAR PERIOD (SWG-1998-02523).
  7. APPROXIMATELY 1,405,650 CY TO (-) 45.0'; ADDITIONAL 98,562 CY TO (-) 47.0'.

AMENDMENT (SWG-2012-00602)

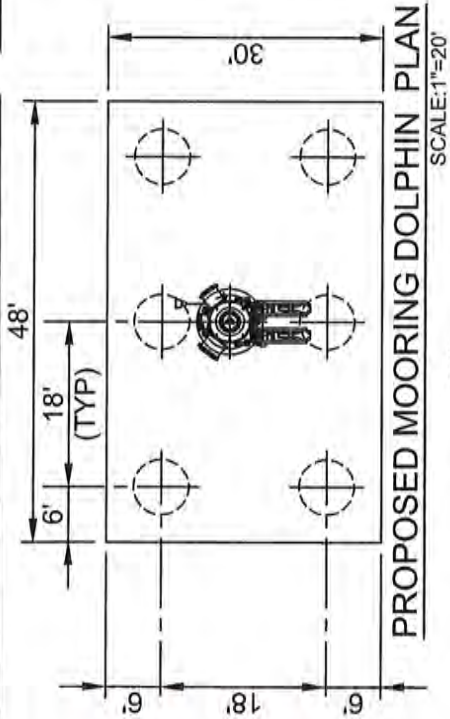
**ATKINS**  
 Member of the SNC Lavalin Group  
 17220 Katy Freeway, Suite 200  
 Houston, Texas 77094  
 713-576-8500  
 TBPEReg. No. F-474

BERTHS 2 AND 3  
 TYPICAL NORTHERN WALL SECTION  
 TEXAS INTERNATIONAL TERMINALS  
 GALVESTON, TEXAS

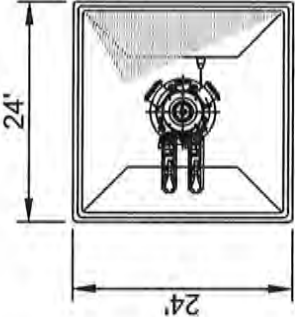
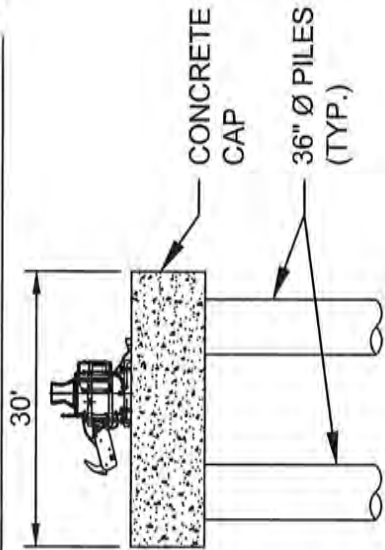


<b>JOB No</b>	100062009
<b>CAD FILE</b>	11
<b>SHEET NUMBER</b>	11/19

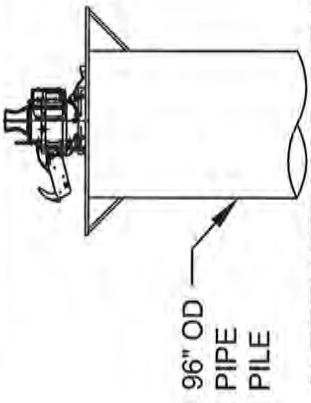
File Name: C:\009 - Texas International Terminals\Permit Drawings\12 Typical Turning and Mooring Dolphin Sections.dwg Layout Name: Time: Tuesday, September 18, 2018 - 3:27pm. Plotted by: DEK6652



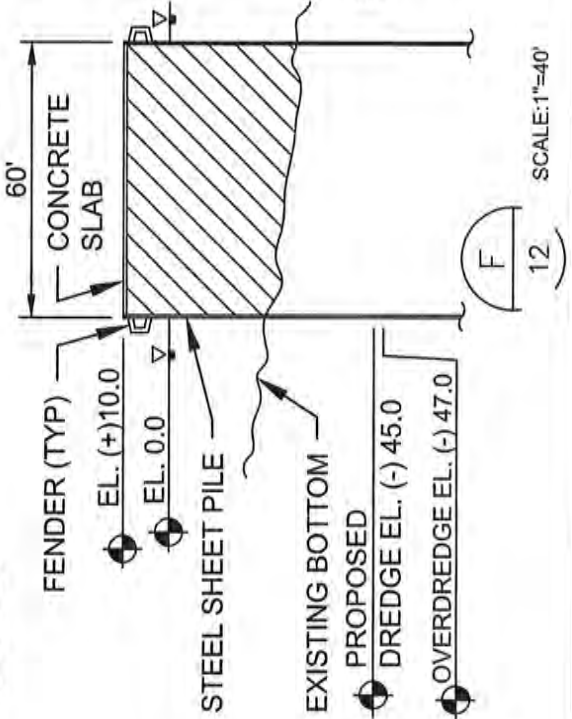
PROPOSED MOORING DOLPHIN SECTION  
SCALE: 1"=20'



ALTERNATE MOORING DOLPHIN PLAN (SEE NOTE-1)  
SCALE: 1"=20'

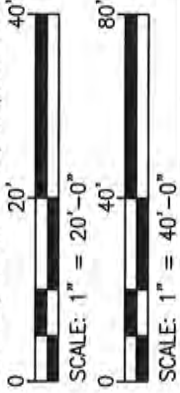


ALTERNATE MOORING DOLPHIN ELEVATION (SEE NOTE-1)  
SCALE: 1"=20'



DESCRIPTION	ABBREVIATION	ELEVATION (FEET)
MEAN HIGHER-HIGH WATER	MHHW	1.41
MEAN HIGH WATER	MHW	1.32
MEAN SEA LEVEL	MSL	0.83
MEAN LOW WATER	MLW	0.30
MEAN LOWER-LOW WATER	MLLW	0.00

SOURCE: <https://tidesandcurrents.noaa.gov/datum>  
Station: 8771450, Galveston Pier 21, TX Epoch: 1983-2001



- NOTES:
- THE PROJECT HAS NOT YET ENTERED FINAL DESIGN STAGE, AND MOORING DOLPHINS ARE ESTIMATED TO CONSIST OF EITHER MULTI-PILE STRUCTURES OR SINGLE PILE STRUCTURES.
  - ALL ELEVATIONS ARE BASED ON MLLW.

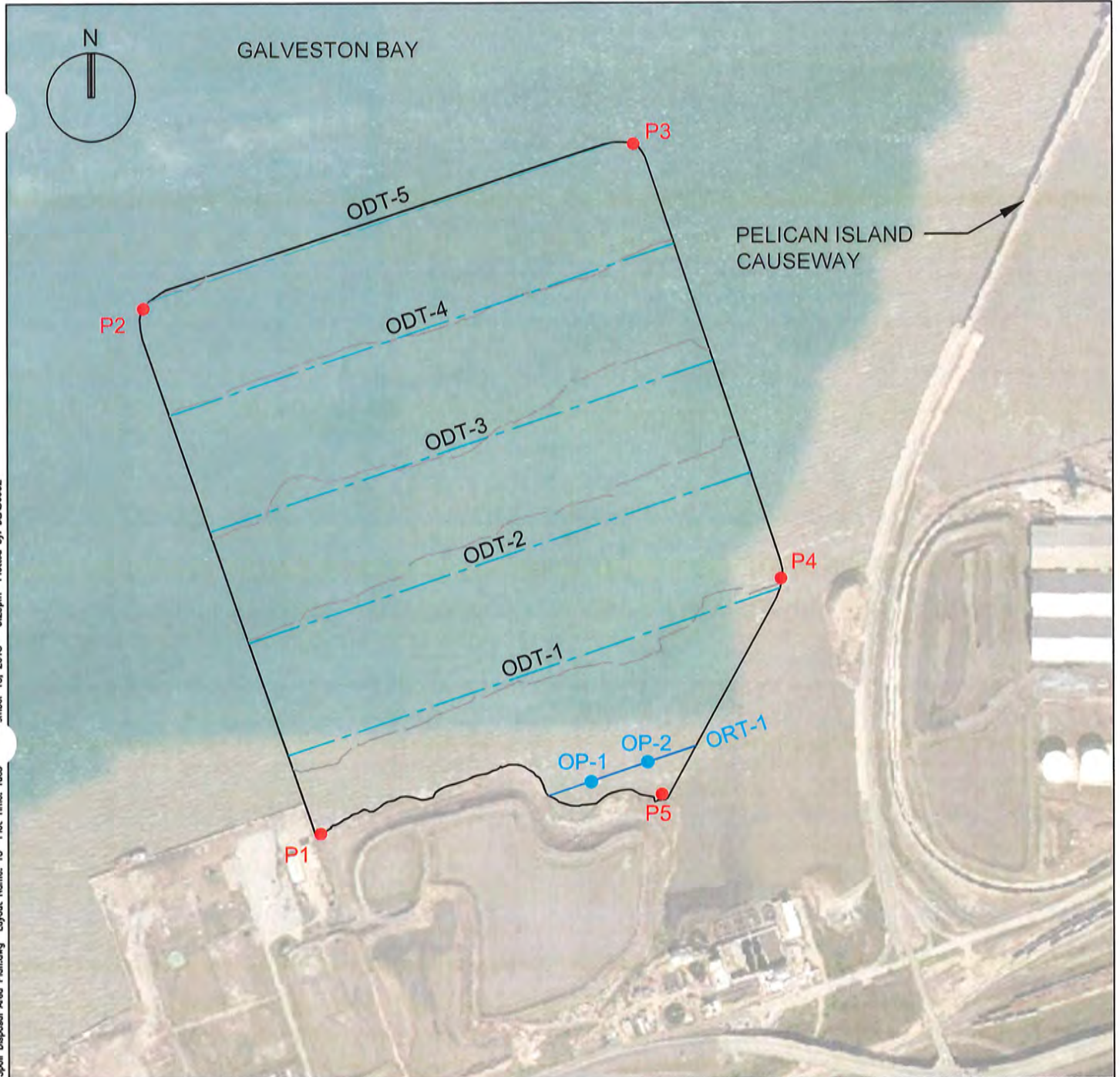
AMENDMENT (SWG-2012-00602)

**ATKINS**  
Member of the SNC Lavalin Group  
17220 Katy Freeway, Suite 200  
Houston, Texas 77094  
713-576-8500  
TBPEReg. No. F-474

BERTHS 2 AND 3  
MOOR. DOLPH. DETAILS & TURN. DOLPH. SECT.  
TEXAS INTERNATIONAL TERMINALS  
GALVESTON, TEXAS



JOB No. 100062009  
CAD FILE 12  
SHEET NUMBER 12/19



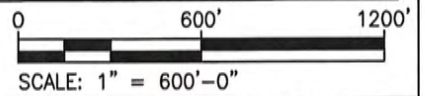
File Name: C:\009 - Texas International Terminals\Permit Drawings\13 Spoil Disposal Area Plan.dwg Layout Name: 15 Plot Time: Tuesday, November 16, 2016 3:25pm Plotted by: DEJ66652

BOUNDARY POINTS		
NAME	LATITUDE	LONGITUDE
P1	29.301377	-94.834601
P2	29.307573	-94.836696
P3	29.309277	-94.83009
P4	29.304152	-94.828351
P5	29.30169	-94.83004

NOTE: COORDINATES SHOWN ARE REFERENCED TO TEXAS STATE PLANE COORDINATE SYSTEM, SOUTH CENTRAL ZONE NAD83

**LEGEND:**

- OYSTER POINT
- OYSTER DREDGE SURVEYS
- OYSTER RAKE SURVEY TRANSECT (ORT)
- OYSTER DREDGE SURVEY TRANSECT (ODT)
- BENEFICIAL USE DREDGE MATERIAL PLACEMENT AREA



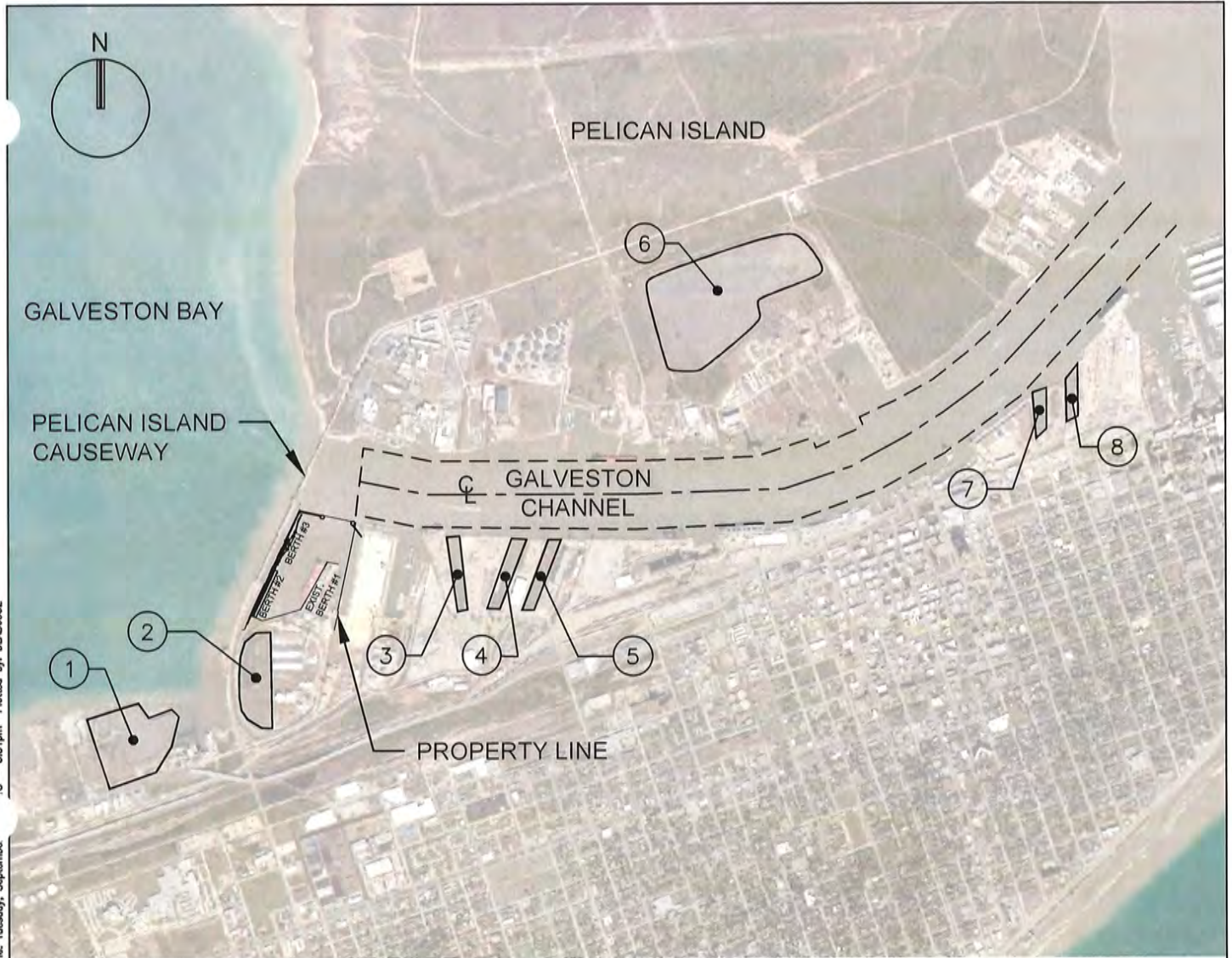
AMENDMENT (SWG-2012-00602)

**ATKINS**  
 Member of the SNC Lavalin Group  
 17220 Katy Freeway, Suite 200  
 Houston, Texas 77094  
 713-576-8500  
 TBPEReg. No. F-474

BERTHS 2 AND 3  
 B.U.D.M. AREA PLAN  
 TEXAS INTERNATIONAL TERMINALS  
 GALVESTON, TEXAS



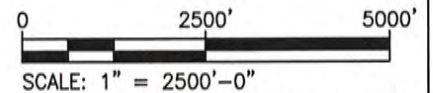
JOB No.  
100062009  
 CAD FILE  
13  
 SHEET NUMBER  
13/19



File Name: C:\009 - Texas International Terminals\Permit Drawings\14 DMPA Plan.dwg Layout Name: 14 Plot Time: Tuesday, September 18, 2012 3:31pm Plotted by: DEAG6952

DREDGE MATERIAL PLACEMENT AREAS			
NO.	LOCATION	COORDINATES	
		LAT.	LONG.
①	DMPA 5600	N29d 18' 00.80"	W94d 49' 56.18"
②	DMPA 4800	N29d 18' 09.77"	W94d 49' 33.47"
③	PORT OF GALVESTON SHIP SLIP 41	N29d 18' 24.95"	W94d 48' 56.18"
④	PORT OF GALVESTON SHIP SLIP 39	N29d 18' 24.36"	W94d 48' 47.50"
⑤	PORT OF GALVESTON SHIP SLIP 37	N29d 18' 24.19"	W94d 48' 41.08"
⑥	PORT OF GALVESTON PA	N29d 19' 08.26"	W94d 48' 07.00"
⑦	PORT OF GALVESTON SHIP SLIP 14	N29d 18' 47.36"	W94d 47' 09.45"
⑧	PORT OF GALVESTON SHIP SLIP 12	N29d 18' 48.98"	W94d 47' 03.56"

NOTE: COORDINATES SHOWN ARE REFERENCED TO TEXAS STATE PLANE COORDINATE SYSTEM, SOUTH CENTRAL ZONE NAD83



AMENDMENT (SWG-2012-00602)

**ATKINS**  
Member of the SNC Lavalin Group  
17220 Katy Freeway, Suite 200  
Houston, Texas 77094  
713-576-8500  
TBPEReg. No. F-474

BERTHS 2 AND 3  
DMPA PLAN  
TEXAS INTERNATIONAL TERMINALS  
GALVESTON, TEXAS



JOB No.  
100062009  
CAD FILE  
14  
SHEET NUMBER  
14/19

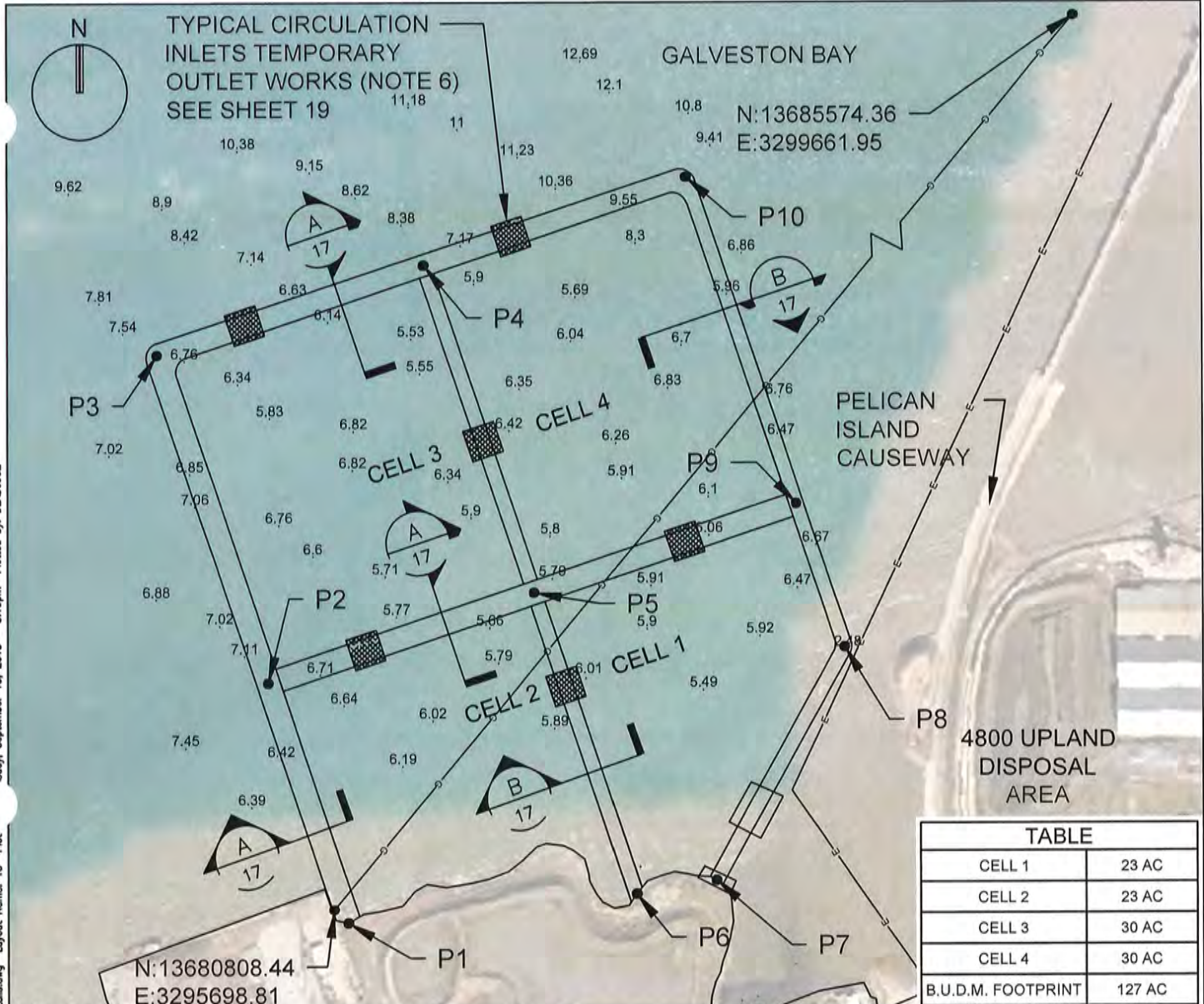


TABLE	
CELL 1	23 AC
CELL 2	23 AC
CELL 3	30 AC
CELL 4	30 AC
B.U.D.M. FOOTPRINT	127 AC

**NOTES:**

1. THIS DRAWING IS FOR PERMITTING PURPOSES ONLY, NOT INTENDED FOR BIDDING OR CONSTRUCTION.
2. ROCK/RECYCLED CONCRETE SECTIONS WILL BE CONSTRUCTED WITH CLEAN MATERIAL. MATERIAL WILL BE COMMERCIALY AVAILABLE STONE, RECYCLED CONCRETE OR OTHER RECYCLED MATERIAL THAT MEETS THE DESIGN REQUIREMENTS.
3. B.U.D.M. WILL BE CONSTRUCTED WITH MATERIAL FROM WITHIN THE CELLS, MATERIAL FROM THE CONSTRUCTION OF THE BERTH/DOCK FACILITY, OR ANY COMBINATION OF THESE.
4. B.U.D.M. WILL UTILIZE DREDGE MAINTENANCE MATERIAL FROM THE TIT DOCK FACILITY, MATERIAL FROM THE CONSTRUCTION OF THE BERTH/DOCK FACILITY OR ANY COMBINATION OF THESE. THE MATERIAL WILL BE PLACED IN THE CELLS MECHANICALLY AND/OR HYDRAULICALLY TO THE FINISHED GRADES AS NOTED. CONSTRUCTION OF EACH CELL WILL BE PHASED AS NEEDED TO ACCOMMODATE THE CONSTRUCTION AND MAINTENANCE OF THE BERTH/DOCK FACILITY.
5. DURING HYDRAULIC PLACEMENT WITHIN THE CELLS, THE TEMPORARY WEIR WILL BE OPERATED TO MAINTAIN WATER QUALITY.
6. CIRCULATION FOR THE RAIL YARD DRAIN AND THE CITY OF GALVESTON WASTEWATER PLANT DISCHARGE WILL BE MAINTAINED THROUGHOUT THE CONSTRUCTION.
7. ALL COORDINATES SHOWN MUST BE FIELD VERIFIED BY A LICENSED SURVEYOR.
8. SURVEY INFORMATION PROVIDED BY TEXAS INTERNATIONAL TERMINALS.

POINT COORDINATE TABLE	
POINT NUMBER	COORDINATES
P1	N13680757.1487, E3295755.1509
P2	N13681697.7519, E3295440.7827
P3	N13682984.5907, E3295007.8240
P4	N13683334.5790, E3296057.1706
P5	N13682050.9096, E3296488.8326
P6	N13680869.2055, E3296890.0124
P7	N13680922.4207, E3297203.6979
P8	N13681836.3517, E3297709.7281
P9	N13682398.3635, E3297519.9514
P10	N13683678.9138, E3297089.4052

**LEGEND:**

- 5.49 SPOT ELEVATION
- G GAS
- E ELECTRIC

SCALE: 1" = 600'-0"

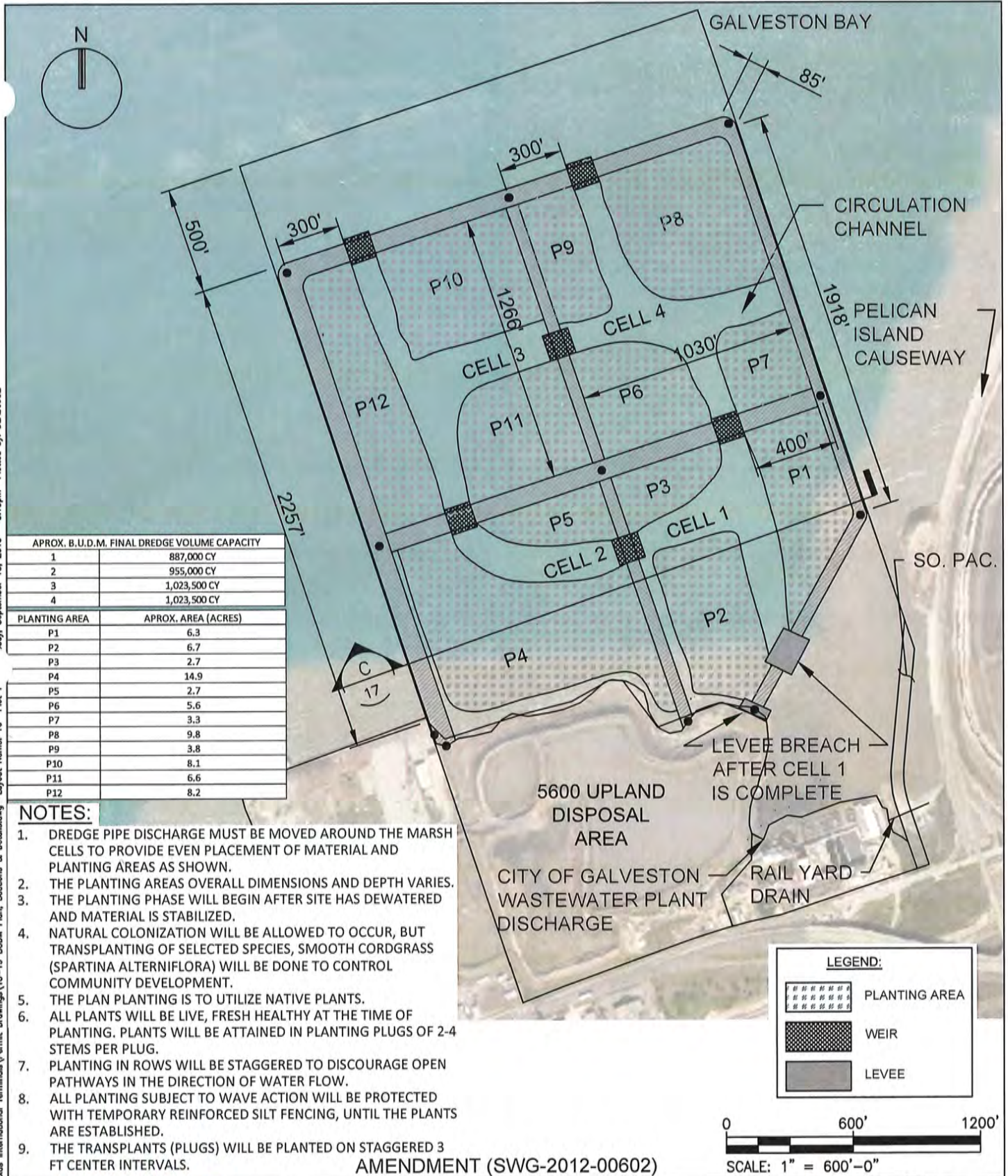
AMENDMENT (SWG-2012-00602)

**ATKINS**  
 Member of the SNC Lavalin Group  
 17220 Katy Freeway, Suite 200  
 Houston, Texas 77094  
 713-576-8500  
 TBPEReg. No. F-474

BERTHS 2 AND 3  
 B.U.D.M. SITE PLAN  
 TEXAS INTERNATIONAL TERMINALS  
 GALVESTON, TEXAS  
 DRAWINGS CREATED BY ZERO/SIX CONSULTING, LLC

JOB No. 100062009  
 CAD FILE 15  
 SHEET NUMBER 15/19

File Name: C:\009 - Texas International Terminals\Permit Drawings\15-19 BUDM Plan, Sections & Details.dwg Layout Name: 15 Plot Date: September 18, 2018 - 3:13pm Plotted by: DEAG8952






APROX. B.U.D.M. FINAL DREDGE VOLUME CAPACITY	
1	887,000 CY
2	955,000 CY
3	1,023,500 CY
4	1,023,500 CY

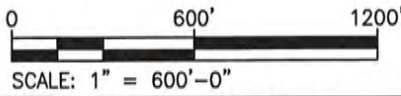
PLANTING AREA	APROX. AREA (ACRES)
P1	6.3
P2	6.7
P3	2.7
P4	14.9
P5	2.7
P6	5.6
P7	3.3
P8	9.8
P9	3.8
P10	8.1
P11	6.6
P12	8.2

**NOTES:**

1. DREDGE PIPE DISCHARGE MUST BE MOVED AROUND THE MARSH CELLS TO PROVIDE EVEN PLACEMENT OF MATERIAL AND PLANTING AREAS AS SHOWN.
2. THE PLANTING AREAS OVERALL DIMENSIONS AND DEPTH VARIES.
3. THE PLANTING PHASE WILL BEGIN AFTER SITE HAS DEWATERED AND MATERIAL IS STABILIZED.
4. NATURAL COLONIZATION WILL BE ALLOWED TO OCCUR, BUT TRANSPLANTING OF SELECTED SPECIES, SMOOTH CORDGRASS (*SPARTINA ALTERNIFLORA*) WILL BE DONE TO CONTROL COMMUNITY DEVELOPMENT.
5. THE PLAN PLANTING IS TO UTILIZE NATIVE PLANTS.
6. ALL PLANTS WILL BE LIVE, FRESH HEALTHY AT THE TIME OF PLANTING. PLANTS WILL BE ATTAINED IN PLANTING PLUGS OF 2-4 STEMS PER PLUG.
7. PLANTING IN ROWS WILL BE STAGGERED TO DISCOURAGE OPEN PATHWAYS IN THE DIRECTION OF WATER FLOW.
8. ALL PLANTING SUBJECT TO WAVE ACTION WILL BE PROTECTED WITH TEMPORARY REINFORCED SILT FENCING, UNTIL THE PLANTS ARE ESTABLISHED.
9. THE TRANSPLANTS (PLUGS) WILL BE PLANTED ON STAGGERED 3 FT CENTER INTERVALS.

**LEGEND:**

-  PLANTING AREA
-  WEIR
-  LEVEE



AMENDMENT (SWG-2012-00602)

**ATKINS**  
 Member of the SNC Lavalin Group  
 17220 Katy Freeway, Suite 200  
 Houston, Texas 77094  
 713-576-8500  
 TBPEReg. No. F-474

BERTHS 2 AND 3  
 B.U.D.M. PLANTING PLAN  
 TEXAS INTERNATIONAL TERMINALS  
 GALVESTON, TEXAS  
 DRAWINGS CREATED BY ZERO/SIX CONSULTING, LLC

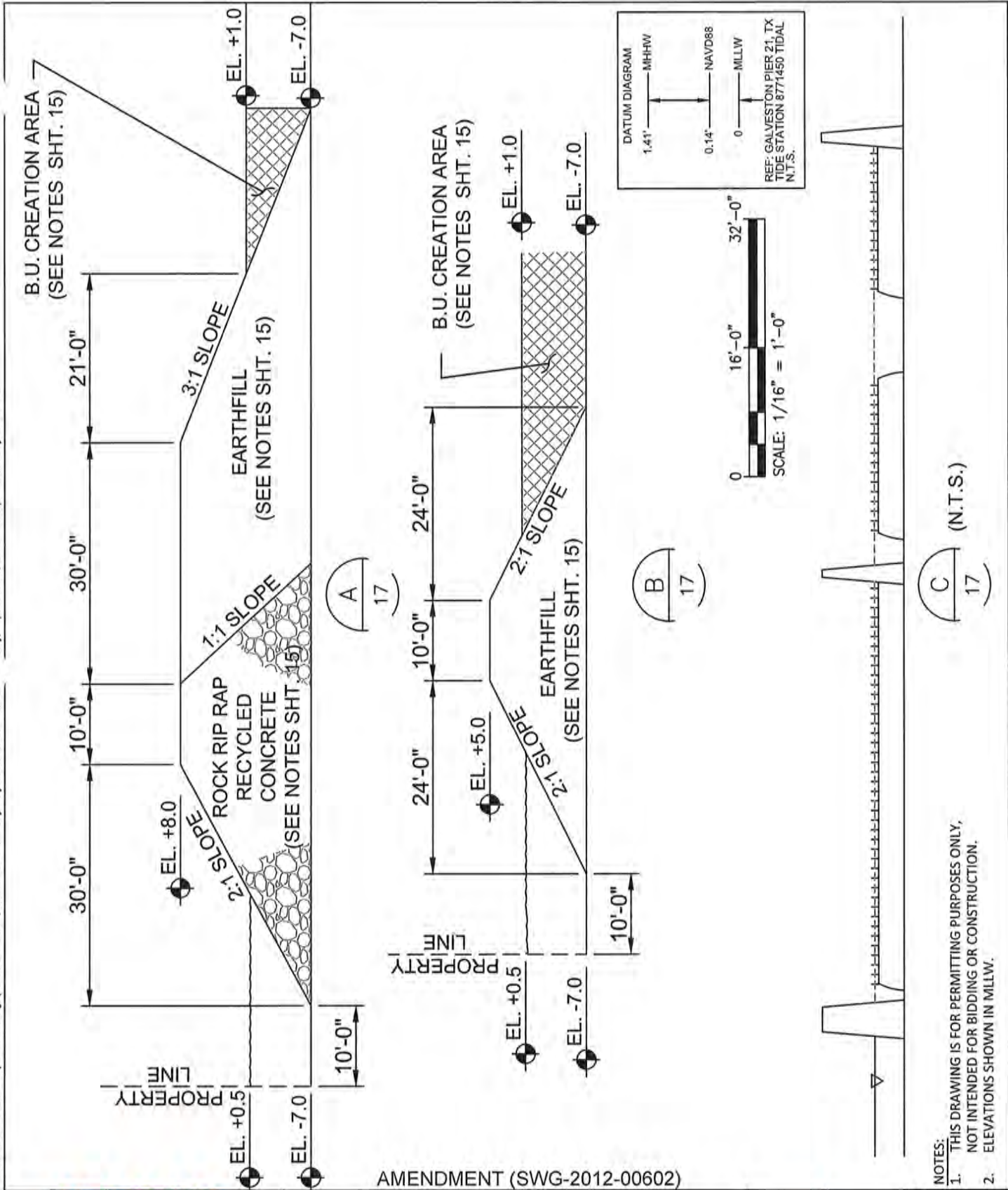
TEXAS INTERNATIONAL TERMINALS

JOB No.  
100062009  
 CAD FILE  
16  
 SHEET NUMBER  
16/19

File Name: C:\009 - Texas International Terminals\Permit Drawings\15-19 BUDM Plan, Sections & Details.dwg Layout Name: 16 Plot 1 Day: September 18, 2018 - 3:13pm Plotted by: DEJAS952



File Name: C:\\_009 - Texas International Terminals\Permit Drawings\15-19 BUDM Plan, Sections & Details.dwg Layout Name: 17 Plot 1 .doy, September 18, 2018 - 3:14pm Plotted by: DEAB6952



AMENDMENT (SWG-2012-00602)

- NOTES:
1. THIS DRAWING IS FOR PERMITTING PURPOSES ONLY, NOT INTENDED FOR BIDDING OR CONSTRUCTION.
  2. ELEVATIONS SHOWN IN MLLW.

**ATKINS**  
 Member of the SNC Lavalin Group  
 17220 Katy Freeway, Suite 200  
 Houston, Texas 77094  
 713-576-8500  
 TBPEReg. No. F-474

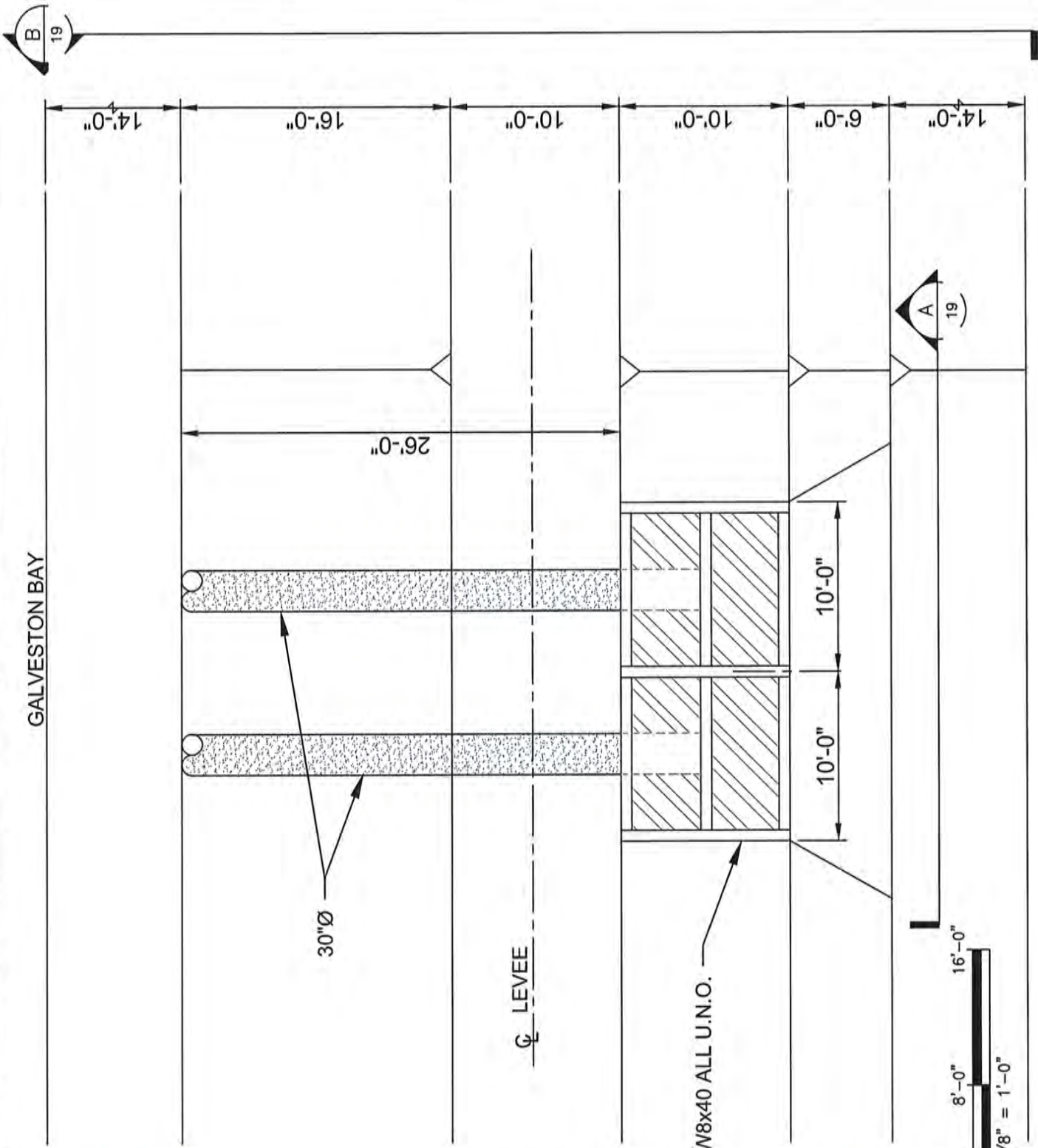
BERTHS 2 AND 3  
 B.U.D.M. LEVEE SECTIONS  
 TEXAS INTERNATIONAL TERMINALS  
 GALVESTON, TEXAS  
 DRAWINGS CREATED BY ZERO/SIX CONSULTING, LLC



JOB No. 100062009  
 CAD FILE 17  
 SHEET NUMBER 17/19

File Name: C:\009 - Texas International Terminals\Permit Drawings\15-19 BUDM Plan, Sections & Details.dwg Layout Name: 18 Plot: .sday, September 18, 2018 - 3:14pm Plotted by: DEAB6952

GALVESTON BAY



AMENDMENT (SWG-2012-00602)

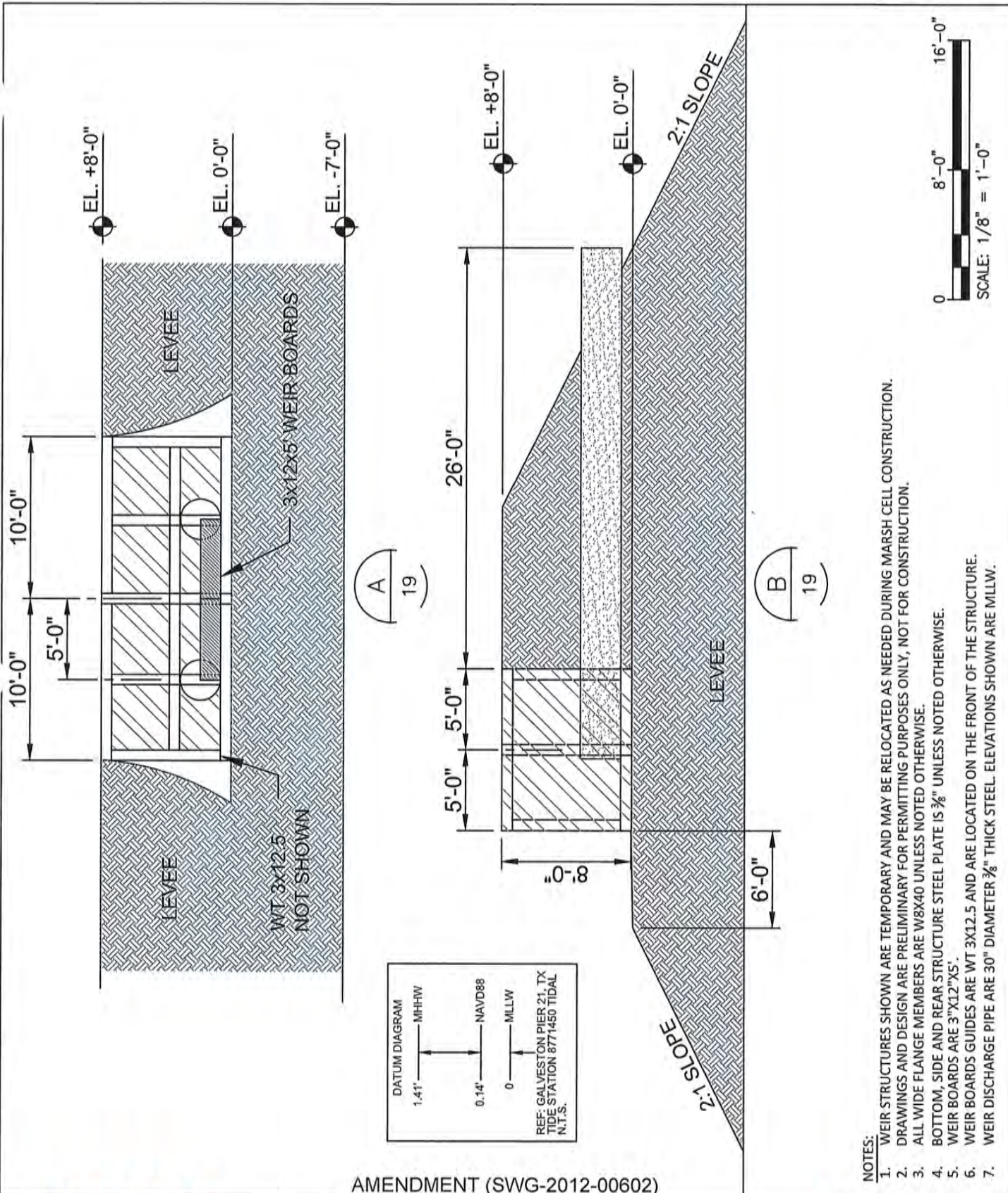
**ATKINS**  
 Member of the SNC Lavalin Group  
 17220 Katy Freeway, Suite 200  
 Houston, Texas 77094  
 713-576-8500  
 TBPEReg. No. F-474

BERTHS 2 AND 3  
 B.U.D.M. WEIR PLAN  
 TEXAS INTERNATIONAL TERMINALS  
 GALVESTON, TEXAS  
 DRAWINGS CREATED BY ZERO/SIX CONSULTING, LLC



JOB No.  
100062009  
 CAD FILE  
18  
 SHEET NUMBER  
18/19

File Name: C:\009 - Texas International Terminals\Permit Drawings\15-19 BUDM Plan, Sections & Details.dwg Layout Name: 19 Plot 1 xdy, September 16, 2018 - 3:14pm Plotted by: DEAB9552



AMENDMENT (SWG-2012-00602)

- NOTES:
1. WEIR STRUCTURES SHOWN ARE TEMPORARY AND MAY BE RELOCATED AS NEEDED DURING MARSH CELL CONSTRUCTION.
  2. DRAWINGS AND DESIGN ARE PRELIMINARY FOR PERMITTING PURPOSES ONLY, NOT FOR CONSTRUCTION.
  3. ALL WIDE FLANGE MEMBERS ARE W8X40 UNLESS NOTED OTHERWISE.
  4. BOTTOM, SIDE AND REAR STRUCTURE STEEL PLATE IS 3/8" UNLESS NOTED OTHERWISE.
  5. WEIR BOARDS ARE 3"X12"X5'.
  6. WEIR BOARD GUIDES ARE WT 3X12.5 AND ARE LOCATED ON THE FRONT OF THE STRUCTURE.
  7. WEIR DISCHARGE PIPE ARE 30" DIAMETER 3/8" THICK STEEL. ELEVATIONS SHOWN ARE MLLW.

**ATKINS**  
 Member of the SNC Lavalin Group  
 17220 Katy Freeway, Suite 200  
 Houston, Texas 77094  
 713-576-8500  
 TBPEReg. No. F-474

BERTHS 2 AND 3  
 B.U.D.M. WEIR SECTIONS  
 TEXAS INTERNATIONAL TERMINALS  
 GALVESTON, TEXAS  
 DRAWINGS CREATED BY ZERO/SIX CONSULTING, LLC



JOB No.  
100062009  
 CAD FILE  
19  
 SHEET NUMBER  
19/19

# CONSISTENCY WITH THE TEXAS COASTAL MANAGEMENT PROGRAM

THE APPLICANT SHOULD SIGN THIS STATEMENT AND  
RETURN WITH APPLICATION PACKET TO:

COASTAL PERMIT SERVICE CENTER  
TAMU-GALVESTON  
P.O. BOX 1675  
GALVESTON, TX 77553-1675  
FAX: (409) 741-4010

## FOR USACE USE ONLY:

PERMIT #: SWG-2012-00602

PROJECT MGR: \_\_\_\_\_

## APPLICANT'S NAME AND ADDRESS (PLEASE PRINT):

Title  First  Last  Suffix

Mailing Address  Home

City  State  Zip Code  Work

Country  Email  Mobile  Fax

The Texas Coastal Management Program (CMP) coordinates state, local, and federal programs for the management of Texas coastal resources. Activities within the CMP boundary must comply with the enforceable policies of the Texas Coastal Management Program and be conducted in a manner consistent with those policies. The boundary definition is contained in the CMP rules (31 TAC §503.1).

- To determine whether your proposed activity lies within the CMP boundary, please contact the Permit Service Center at [permitting.assistance@glo.texas.gov](mailto:permitting.assistance@glo.texas.gov)

## PROJECT DESCRIPTION:

Is the proposed activity at a waterfront site or within coastal, tidal, or navigable waters?  Yes  No

If Yes, name affected coastal, tidal, or navigable waters:

Is the proposed activity water dependent?  Yes  No (31 TAC §501.3(a)(14))

<http://tinurl.com/CMPdefinitions>

Please briefly describe the project and all possible effects on coastal resources:

The applicant is requesting to amend their current U.S. Army Corps of Engineers (USACE) Permit SWG-2012-00602 that is authorized through December 31, 2019 for development of a proposed berthing facilities within an existing basin in Galveston, Galveston County, Texas (the Project). In an effort to reduce the footprint of Project components and streamline dock design for safely mooring Aframax and Suezmax vessels, the amended design will include: 1) construction of a streamlined berthing facility; 2) construction of a steel sheet pile retaining structure/breakwater for berthing dock facility support and associated concrete riprap for slope stabilization; 3) construction of a separate combi-wall bulkhead to replace the existing concrete bulkhead and riprap for shoreline and rail loop protection, including placement of clean fill material within a 0.67-acre unvegetated open water habitat behind the combi-wall bulkhead; 4) dredging of an 33-acre unvegetated open water area adjacent to east of the proposed berthing facility to a minimum depth of -45-feet Mean Lower Low Water (MLLW) with 2-foot over dredge; 5) construction of a proposed beneficial use dredge material (BUDM) placement area (PA); 6) placement of all or part of the dredge material within the proposed BUDM PA, the applicant-owned confined upland PAs 5600 and 4800, five Port of Galveston ship slips (#12, 14, 37, 39, and 41) and the Port of Galveston PA.

Indicate area of impact:   acres or  square feet

## ADDITIONAL PERMITS/ AUTHORIZATIONS REQUIRED:

- Coastal Easement - Date application submitted: \_\_\_\_\_
- Coastal Lease - Date application submitted: \_\_\_\_\_
- Stormwater Permit- Date application submitted: \_\_\_\_\_
- Water Quality Certification - Date application submitted:
- Other state/federal/local permits/authorizations required: \_\_\_\_\_

The proposed activity must not adversely affect coastal natural resource areas (CNRAs).

**PLEASE CHECK ALL COASTAL NATURAL RESOURCE AREAS THAT MAY BE AFFECTED:**

- |   |   |  |
|---|---|--|
| <input type="checkbox"/> Coastal Barriers       | <input type="checkbox"/> Critical Erosion Areas | <input checked="" type="checkbox"/> Submerged Lands              |
| <input type="checkbox"/> Coastal Historic Areas | <input type="checkbox"/> Gulf Beaches           | <input type="checkbox"/> Submerged Aquatic Vegetation            |
| <input type="checkbox"/> Coastal Preserves      | <input type="checkbox"/> Hard Substrate Reefs   | <input type="checkbox"/> Tidal Sand or Mud Flats                 |
| <input type="checkbox"/> Coastal Shore Areas    | <input type="checkbox"/> Oyster Reefs           | <input type="checkbox"/> Waters of Gulf of Mexico                |
| <input type="checkbox"/> Coastal Wetlands       | <input type="checkbox"/> Special Hazard Areas   | <input checked="" type="checkbox"/> Waters Under Tidal Influence |
| <input type="checkbox"/> Critical Dune Areas    |   |  |

*The applicant affirms that the proposed activity, its associated facilities, and their probable effects comply with the relevant enforceable policies of the CMP, and that the proposed activity will be conducted in a manner consistent with such policies.*

**PLEASE CHECK ALL APPLICABLE ENFORCEABLE POLICIES:**

<http://tinyurl.com/CMPpolicies>

<input type="checkbox"/>	§501.15 Policy for Major Actions
<input type="checkbox"/>	§501.16 Policies for Construction of Electric Generating and Transmission Facilities
<input type="checkbox"/>	§501.17 Policies for Construction, Operation, and Maintenance of Oil and Gas Exploration and Production Facilities
<input type="checkbox"/>	§501.18 Policies for Discharges of Wastewater and Disposal of Waste from Oil and Gas Exploration and Production Activities
<input type="checkbox"/>	§501.19 Policies for Construction and Operation of Solid Waste Treatment, Storage, and Disposal Facilities
<input type="checkbox"/>	§501.20 Policies for Prevention, Response and Remediation of Oil Spills
<input type="checkbox"/>	§501.21 Policies for Discharge of Municipal and Industrial Wastewater to Coastal Waters
<input type="checkbox"/>	§501.22 Policies for Nonpoint Source (NPS) Water Pollution
<input type="checkbox"/>	§501.23 Policies for Development in Critical Areas
<input checked="" type="checkbox"/>	§501.24 Policies for Construction of Waterfront Facilities and Other Structures on Submerged Lands
<input checked="" type="checkbox"/>	§501.25 Policies for Dredging and Dredged Material Disposal and Placement
<input type="checkbox"/>	§501.26 Policies for Construction in the Beach/Dune System
<input type="checkbox"/>	§501.27 Policies for Development in Coastal Hazard Areas
<input type="checkbox"/>	§501.28 Policies for Development Within Coastal Barrier Resource System Units and Otherwise Protected Areas on Coastal Barriers
<input type="checkbox"/>	§501.29 Policies for Development in State Parks, Wildlife Management Areas or Preserves
<input type="checkbox"/>	§501.30 Policies for Alteration of Coastal Historic Areas
<input type="checkbox"/>	§501.31 Policies for Transportation Projects
<input type="checkbox"/>	§501.32 Policies for Emission of Air Pollutants
<input type="checkbox"/>	§501.33 Policies for Appropriations of Water
<input type="checkbox"/>	§501.34 Policies for Levee and Flood Control Projects

Please explain how the proposed project is consistent with the applicable enforceable policies identified above. Please use additional sheets if necessary. *For example: If you are constructing a pier with a covered boathouse, then the applicable enforceable policy is: §501.24 Policies for Construction of Waterfront Facilities and Other Structures on Submerged Lands. The project is consistent because it will not interfere with navigation, natural coastal processes, and avoids/minimizes shading.*

The proposed Project includes development of submerged lands to establish a new berthing dock facility. The project is currently authorized under USACE Permit No. SWG-2006-00602; however, the project has been streamlined in an effort to reduce the footprint of Project components and dock design for safely mooring Aframax and Suezmax vessels. The streamlined design includes 1) construction of a streamlined berthing facility; 2) construction of a steel sheet pile retaining structure/breakwater for berthing dock facility support and associated concrete riprap for slope stabilization; 3) construction of a separate combi-wall bulkhead to replace the existing concrete bulkhead and riprap for shoreline and rail loop protection, including placement of clean fill material within a 0.67-acre unvegetated open water habitat behind the combi-wall bulkhead; 4) dredging of an 33-acre unvegetated open water area adjacent to east of the proposed berthing facility to a minimum depth of -45-feet Mean Lower Low Water (MLLW) with 2-foot over dredge; 5) construction of a proposed beneficial use dredge material (BUDM) placement area (PA); 6) placement of all or part of the dredge material within the proposed BUDM PA, the applicant-owned confined upland PAs 5600 and 4800, five Port of Galveston ship slips (#12, 14, 37, 39, and 41) and the Port of Galveston PA. The proposed project is consistent with the objectives set for in Rule §501.24 of Title 31, Part 16, Chapter 501, Subchapter B of the TAC as the project will not pose adverse effects on the coastal waters or critical areas. The Project has been designed and, to the greatest extent practicable, sited so that tides and currents will aid in flushing of the site or renew its water regularly. The project has been designed to provide an equal or better level of water quality protection than what currently exists. Additionally, the berthing facilities and associated components have been designed and, to the greatest extent practicable, sited to avoid and otherwise minimize adverse effects on critical areas from boat traffic to and from the facilities. The BUDM PA has also been sited and designed to avoid and otherwise minimize adverse effects on critical areas, coastal waters, and special aquatic resources by situating the PA within an area absent of wetlands, oysters, and seagrasses, as well as installing systems to provided continual water flow through the PA to minimize water quality impacts. Furthermore, the Project will not significantly interfere with public navigation; the natural coastal processes which supply sediments to shore areas or otherwise exacerbate erosion of shore areas; and will avoid and otherwise minimizes shading of critical areas and other adverse effects.

The proposed project includes dredging of approximately 1.41 million cubic yards (mcy) of unconsolidated unvegetated submerged bay bottom within a 33-acre (ac) area to a minimum depth of -45-feet MLLW with a 2-foot overdredge. Placement of approximately 1.50 mcy of material will occur within the proposed BUDM PA and previously authorized upland confined placement area owned and maintained by the applicant (PA 5600 and PA 4800), five Port of Galveston ship slips (#12, 14, 37, 39, 41), and/or the Port of Galveston PA. The proposed project is consistent with the objectives set for in Rule §501.25 of Title 31, Part 16, Chapter 501, Subchapter B of the TAC given that dredging, disposal, and placement activities will avoid and otherwise minimize adverse effects to coastal waters, submerged lands, critical areas, and coastal shore areas to the greatest extent practicable. Additionally, activities will not cause or contribute, after consideration of dilution and dispersion, to violation of any applicable surface water quality standards established under §501.21 policies for for Discharge of Municipal and Industrial Wastewater to Coastal Waters. Furthermore, dredging activities will adhere to all established applicable guidelines provided under this policy.

BY SIGNING THIS STATEMENT, THE APPLICANT IS STATING THAT THE PROPOSED ACTIVITY COMPLIES WITH THE TEXAS COASTAL MANAGEMENT PROGRAM AND WILL BE CONDUCTED IN A MANNER CONSISTENT WITH SUCH PROGRAM



09.19.18

Signature of Applicant/Agent

Date

*Any questions regarding the Texas Coastal Management Program should be referred to:*

Allison Buchtien  
Texas General Land Office  
1001 Texas Clipper Road, BLDG 3026, Room 912  
Galveston, Texas 77554  
Phone: (409) 741-4057  
Fax: (409) 741-4010  
Toll Free: 1-866-894-7664

Texas General Land Office  
Coastal Protection Division  
1700 North Congress Avenue, Room 330  
Austin, Texas 78701-1495  
Toll Free: 1-800-998-4GLO  
[federal.consistency@glo.texas.gov](mailto:federal.consistency@glo.texas.gov)

Print Form