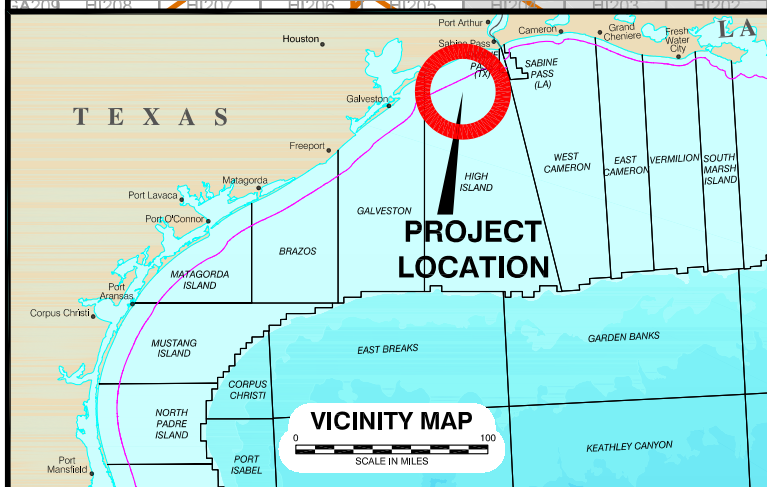


**ABANDONMENT
16" GAS PIPELINE**

BSEE SEG. NO. 5895
 LENGTH IN SAND AND SEDIMENT RESOURCE AREA = 20,663.97' = 3.91 MI.
 LENGTH IN SAND AND SEDIMENT RESOURCE AREA INSIDE FAIRWAY = 10,061.38' = 1.90 MI.
 LENGTH IN SAND AND SEDIMENT RESOURCE AREA OUTSIDE FAIRWAY = 10,602.60' = 2.01 MI.
 LENGTH IN FAIRWAY = 17,252.46' = 3.27 MI.
 TOTAL LENGTH OF PIPE = 138,802.50' = 26.29 MI.

LEGEND

- SAND AND SEDIMENT RESOURCES AREA
- ENVIRONMENTAL SENSITIVE AREA



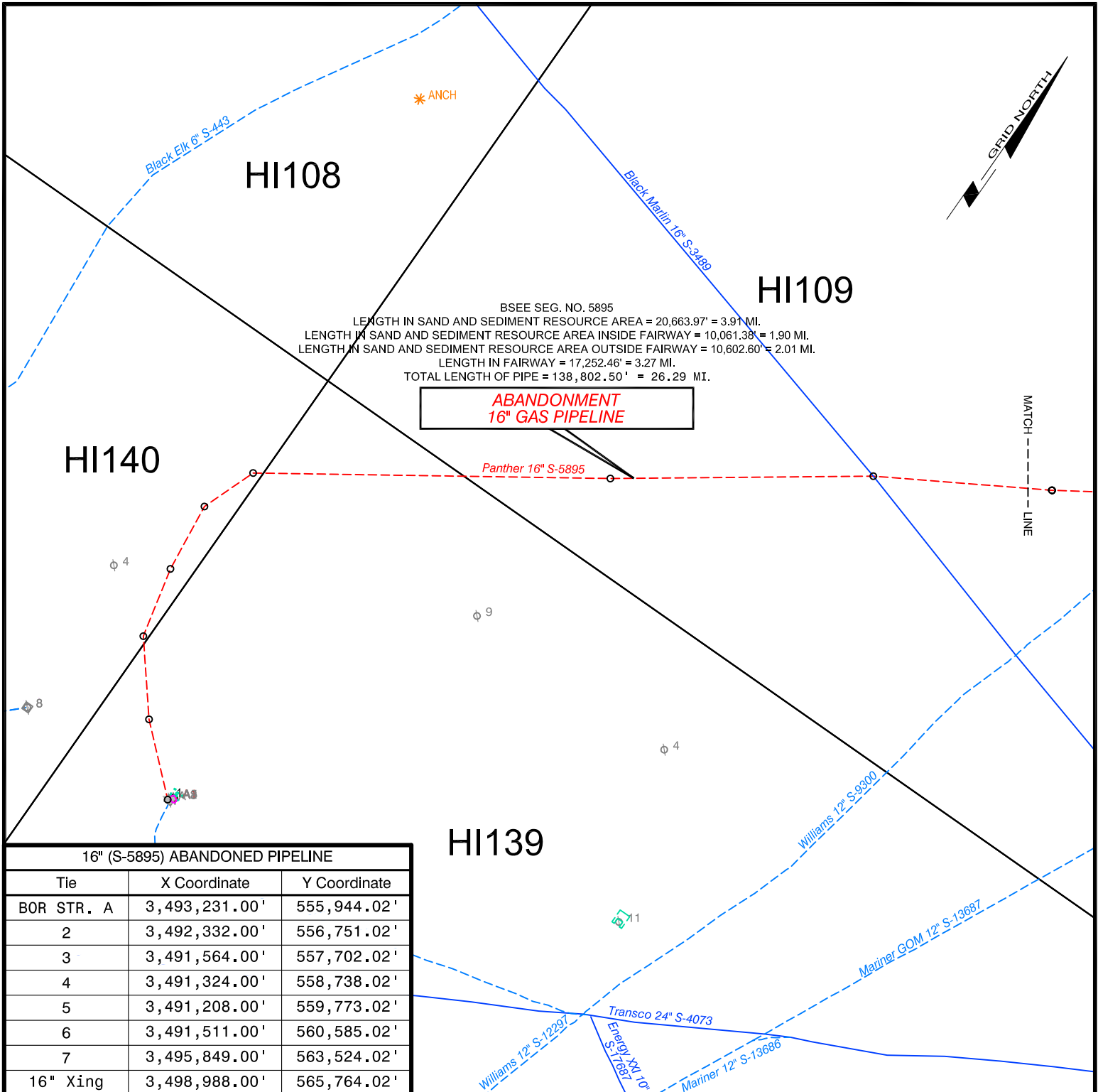
PANTHER INTERSTATE PIPELINE ENERGY, LLC

**PIPELINE ABANDONMENT
16" GAS PIPELINE (SEG #5895)
BLOCK 139 TO 48
HIGH ISLAND AREA
GULF OF MEXICO**

Geodetic Datum: NAD27
 Projection: TEXAS SOUTH CENTRAL
 Grid Units: US SURVEY FEET



FUGRO USA MARINE, INC.
 200 Dulles Drive
 Lafayette, Louisiana 70506
 (337) 237-1300



**ABANDONMENT
16" GAS PIPELINE**

BSEE SEG. NO. 5895
 LENGTH IN SAND AND SEDIMENT RESOURCE AREA = 20,663.97' = 3.91 MI.
 LENGTH IN SAND AND SEDIMENT RESOURCE AREA INSIDE FAIRWAY = 10,061.38' = 1.90 MI.
 LENGTH IN SAND AND SEDIMENT RESOURCE AREA OUTSIDE FAIRWAY = 10,602.60' = 2.01 MI.
 LENGTH IN FAIRWAY = 17,252.46' = 3.27 MI.
 TOTAL LENGTH OF PIPE = 138,802.50' = 26.29 MI.

16" (S-5895) ABANDONED PIPELINE

Tie	X Coordinate	Y Coordinate
BOR STR. A	3,493,231.00'	555,944.02'
2	3,492,332.00'	556,751.02'
3	3,491,564.00'	557,702.02'
4	3,491,324.00'	558,738.02'
5	3,491,208.00'	559,773.02'
6	3,491,511.00'	560,585.02'
7	3,495,849.00'	563,524.02'
16" Xing	3,498,988.00'	565,764.02'

CERTIFIED CORRECT AS TO THE HORIZONTAL POSITION OF THE PIPELINE.



STEPHEN R. HENRY RPLS #4903
 STATE OF LOUISIANA

- NOTES**
- COORDINATES TRANSFORMED USING NADCON (VER. 2.1).
 - LENGTH OF PIPELINE CALCULATED USING SURVEY COORDINATES (GRID DISTANCES) AND EXCLUDES LENGTH OF RISERS.
 - B.O.R. REPRESENTS BOTTOM OF RISER.

PIPELINE COORDINATES REFLECT IN-HOUSE DATA AND DOES NOT REPRESENT A RECENT FUGRO FIELD SURVEY.

PANTHER INTERSTATE PIPELINE ENERGY, LLC

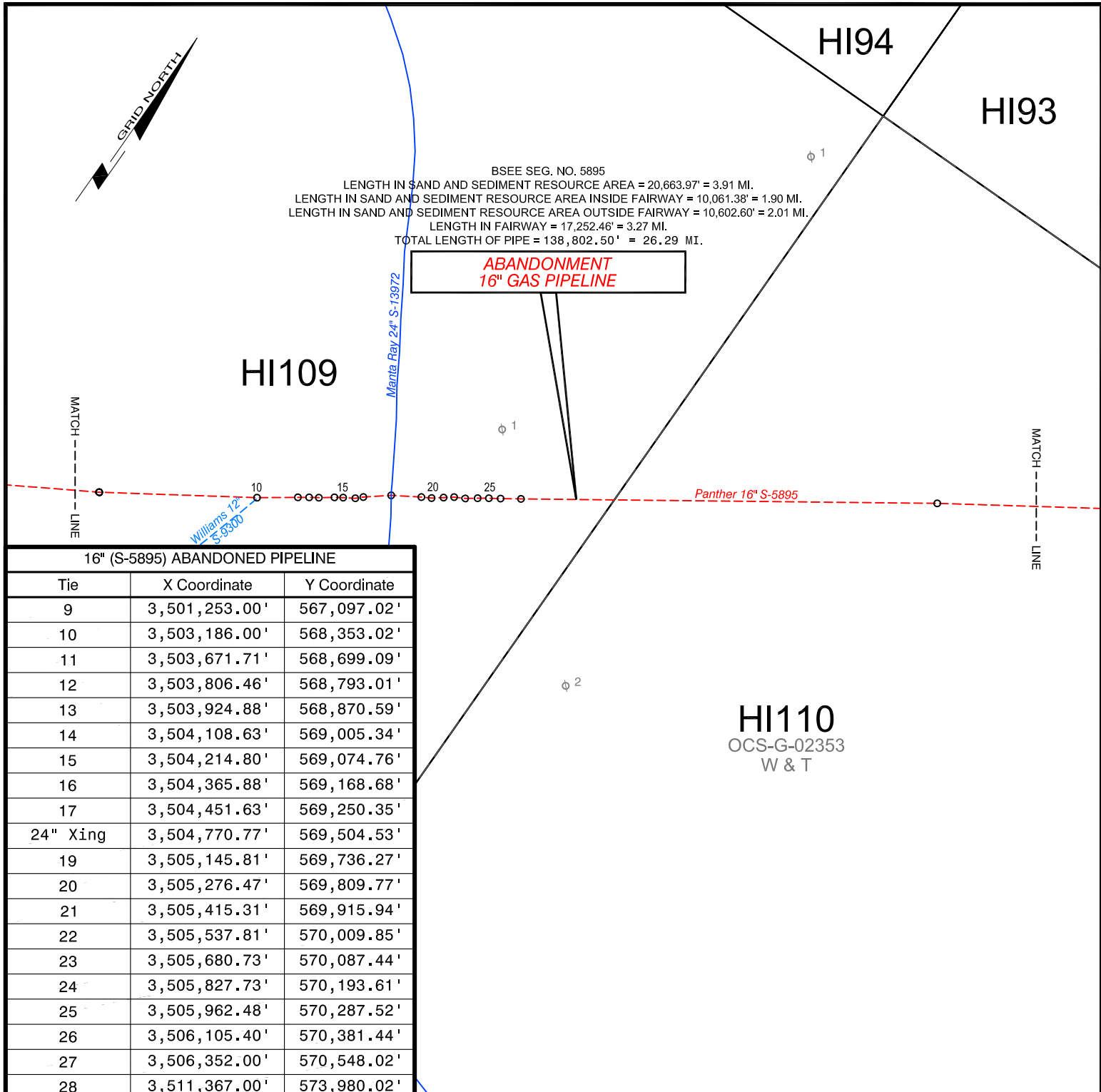
**PIPELINE ABANDONMENT
16" GAS PIPELINE (SEG #5895)
BLOCK 139 TO 48
HIGH ISLAND AREA
GULF OF MEXICO**

Geodetic Datum: NAD27
 Projection: TEXAS SOUTH CENTRAL
 Grid Units: US SURVEY FEET



FUGRO USA MARINE, INC.
 200 Dulles Drive
 Lafayette, Louisiana 70506
 (337) 237-1300

Job No.: 17170620 Date: 10/23/2017 Drwn: MM Chart: 2 Of: 12
 DWG File: 1717062001_AB_S5895 10/23/2017



BSEE SEG. NO. 5895
 LENGTH IN SAND AND SEDIMENT RESOURCE AREA = 20,663.97' = 3.91 MI.
 LENGTH IN SAND AND SEDIMENT RESOURCE AREA INSIDE FAIRWAY = 10,061.38' = 1.90 MI.
 LENGTH IN SAND AND SEDIMENT RESOURCE AREA OUTSIDE FAIRWAY = 10,602.60' = 2.01 MI.
 LENGTH IN FAIRWAY = 17,252.46' = 3.27 MI.
 TOTAL LENGTH OF PIPE = 138,802.50' = 26.29 MI.

**ABANDONMENT
 16" GAS PIPELINE**

HI109

HI94

HI93

HI110
 OCS-G-02353
 W & T

MATCH --- LINE

MATCH --- LINE

16" (S-5895) ABANDONED PIPELINE

Tie	X Coordinate	Y Coordinate
9	3,501,253.00'	567,097.02'
10	3,503,186.00'	568,353.02'
11	3,503,671.71'	568,699.09'
12	3,503,806.46'	568,793.01'
13	3,503,924.88'	568,870.59'
14	3,504,108.63'	569,005.34'
15	3,504,214.80'	569,074.76'
16	3,504,365.88'	569,168.68'
17	3,504,451.63'	569,250.35'
24" Xing	3,504,770.77'	569,504.53'
19	3,505,145.81'	569,736.27'
20	3,505,276.47'	569,809.77'
21	3,505,415.31'	569,915.94'
22	3,505,537.81'	570,009.85'
23	3,505,680.73'	570,087.44'
24	3,505,827.73'	570,193.61'
25	3,505,962.48'	570,287.52'
26	3,506,105.40'	570,381.44'
27	3,506,352.00'	570,548.02'
28	3,511,367.00'	573,980.02'

PANTHER INTERSTATE PIPELINE ENERGY, LLC

**PIPELINE ABANDONMENT
 16" GAS PIPELINE (SEG #5895)**
 BLOCK 139 TO 48
 HIGH ISLAND AREA
 GULF OF MEXICO

Geodetic Datum: NAD27
 Projection: TEXAS SOUTH CENTRAL
 Grid Units: US SURVEY FEET

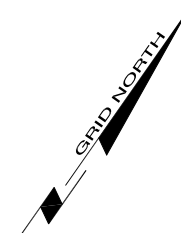
SCALE 1:24000
 0 2000 FEET



FUGRO USA MARINE, INC.
 200 Dulles Drive
 Lafayette, Louisiana 70506
 (337) 237-1300

Job No.: 17170620 Date: 10/23/2017 Drwn: MM Chart: 3 Of: 12
 DWG File: 1717062001_AB_S5895

φ 2



HI93

BSEE SEG. NO. 5895
 LENGTH IN SAND AND SEDIMENT RESOURCE AREA = 20,663.97' = 3.91 MI.
 LENGTH IN SAND AND SEDIMENT RESOURCE AREA INSIDE FAIRWAY = 10,061.38' = 1.90 MI.
 LENGTH IN SAND AND SEDIMENT RESOURCE AREA OUTSIDE FAIRWAY = 10,602.60' = 2.01 MI.
 LENGTH IN FAIRWAY = 17,252.46' = 3.27 MI.
 TOTAL LENGTH OF PIPE = 138,802.50' = 26.29 MI.

**ABANDONMENT
 16" GAS PIPELINE**

MATCH --- LINE

Panther 16" S-5895

30

MATCH --- LINE

HI110
 OCS-G-02353
 W & T

HI92

Transco 24" S-4073

HI111
 OCS-G-02354
 W & T

16" (S-5895) ABANDONED PIPELINE		
Tie	X Coordinate	Y Coordinate
29	3,517,516.00'	578,007.02'
30	3,522,730.00'	581,632.02'

PANTHER INTERSTATE PIPELINE ENERGY, LLC

**PIPELINE ABANDONMENT
 16" GAS PIPELINE (SEG #5895)**
 BLOCK 139 TO 48
 HIGH ISLAND AREA
 GULF OF MEXICO

Geodetic Datum: NAD27
 Projection: TEXAS SOUTH CENTRAL
 Grid Units: US SURVEY FEET

SCALE 1:24000
 0 2000
 FEET



FUGRO USA MARINE, INC.
 200 Dulles Drive
 Lafayette, Louisiana 70506
 (337) 237-1300

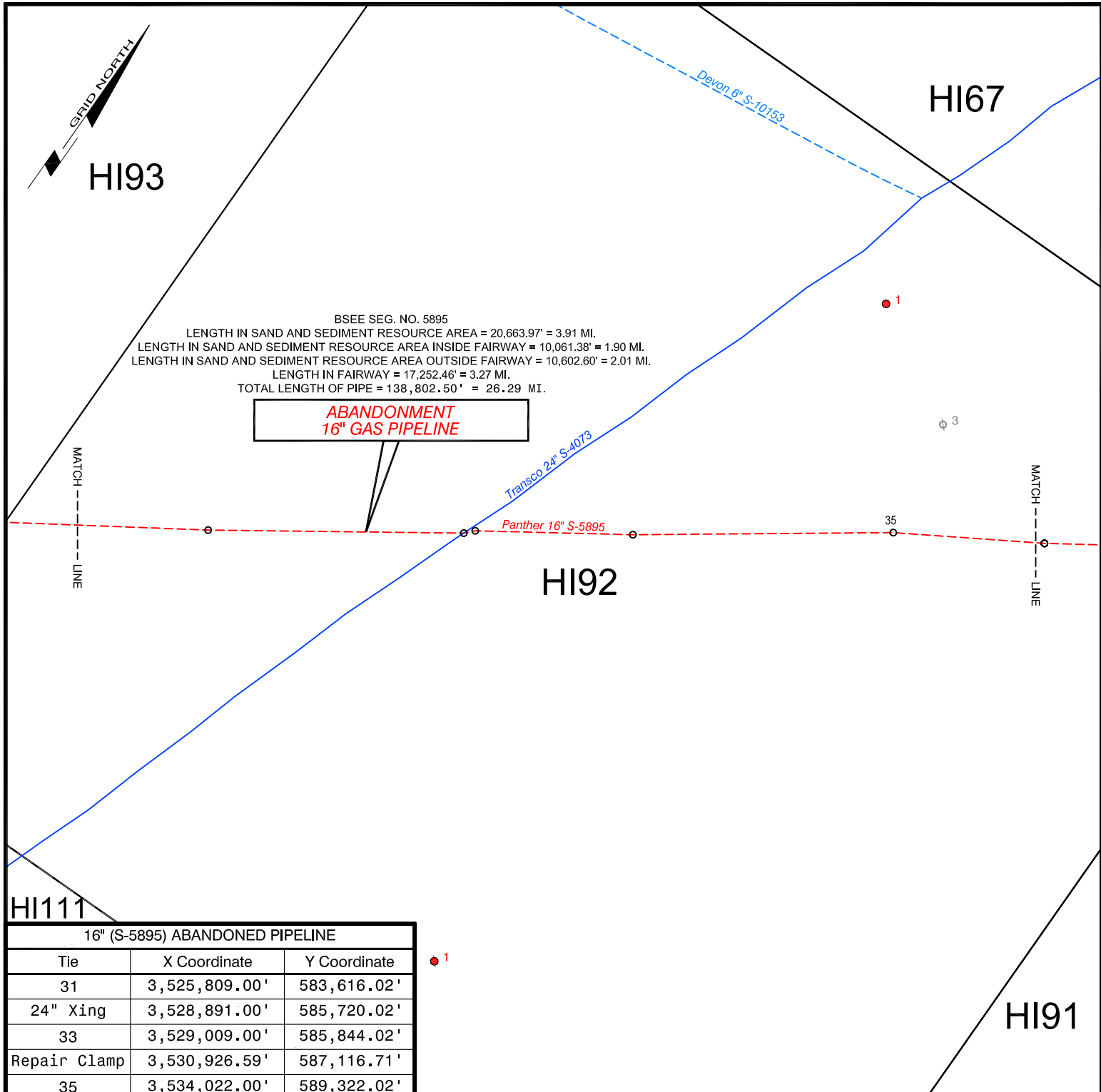
Job No.: 17170620 Date: 10/23/2017

Drwn: MM

Chart: 4 Of: 12

DWG File: 1717062001_AB_S5895

10/23/2017



BSEE SEG. NO. 5895
 LENGTH IN SAND AND SEDIMENT RESOURCE AREA = 20,663.97' = 3.91 MI.
 LENGTH IN SAND AND SEDIMENT RESOURCE AREA INSIDE FAIRWAY = 10,061.38' = 1.90 MI.
 LENGTH IN SAND AND SEDIMENT RESOURCE AREA OUTSIDE FAIRWAY = 10,602.60' = 2.01 MI.
 LENGTH IN FAIRWAY = 17,252.46' = 3.27 MI.
 TOTAL LENGTH OF PIPE = 138,802.50' = 26.29 MI.

**ABANDONMENT
 16" GAS PIPELINE**

16" (S-5895) ABANDONED PIPELINE		
Tie	X Coordinate	Y Coordinate
31	3,525,809.00'	583,616.02'
24" Xing	3,528,891.00'	585,720.02'
33	3,529,009.00'	585,844.02'
Repair Clamp	3,530,926.59'	587,116.71'
35	3,534,022.00'	589,322.02'

PANTHER INTERSTATE PIPELINE ENERGY, LLC

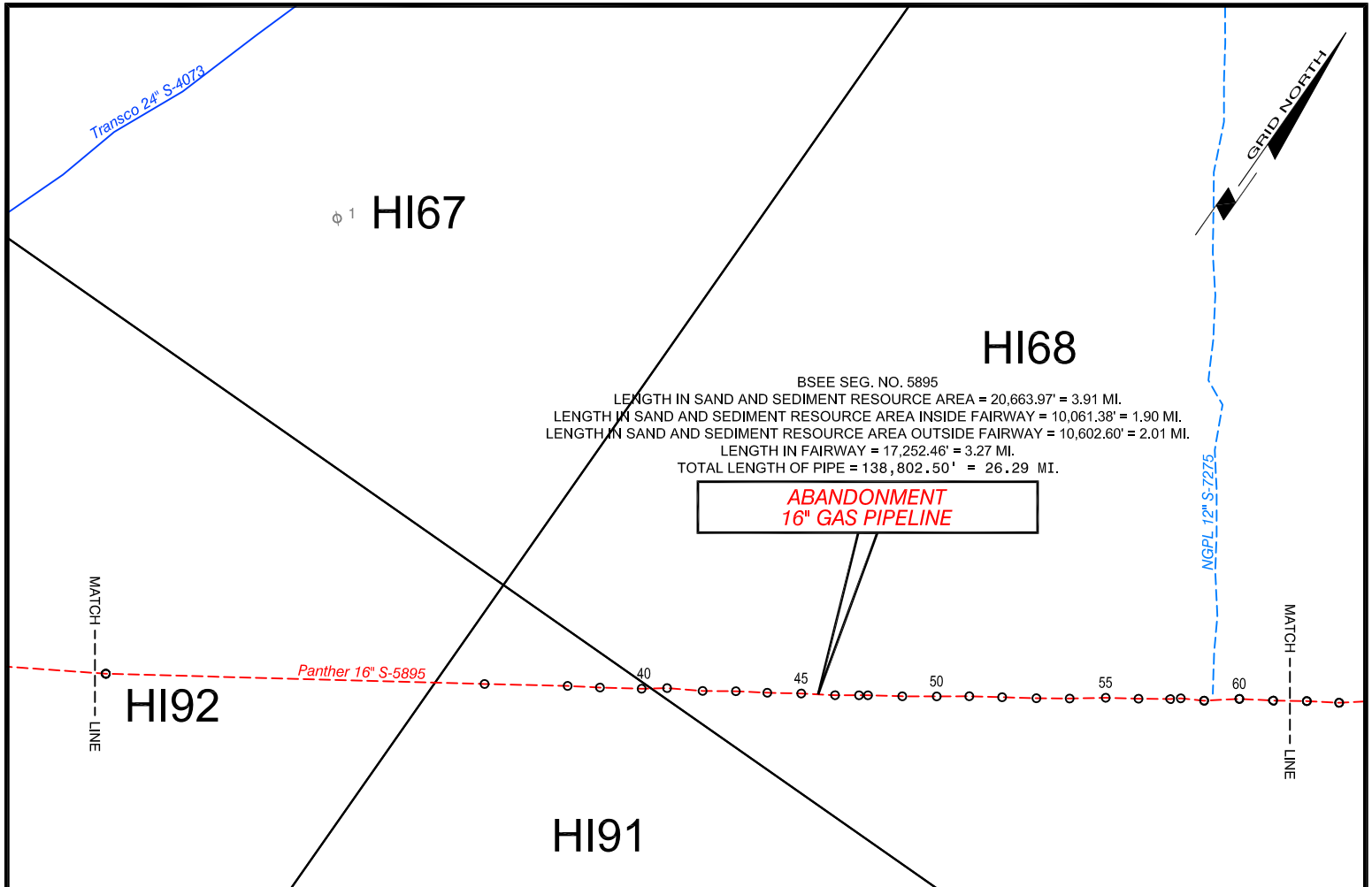
**PIPELINE ABANDONMENT
 16" GAS PIPELINE (SEG #5895)
 BLOCK 139 TO 48
 HIGH ISLAND AREA
 GULF OF MEXICO**

Geodetic Datum: NAD27
 Projection: TEXAS SOUTH CENTRAL
 Grid Units: US SURVEY FEET

SCALE 1:24000
 0 2000
 FEET



Job No.: 17170620 Date: 10/23/2017 Drwn: MM Chart: Of: 12
 DWG File: 1717062001_AB_S5895



16" (S-5895) ABANDONED PIPELINE					
Tie	X Coordinate	Y Coordinate	Tie	X Coordinate	Y Coordinate
36	3,535,920.00'	590,459.02'	49	3,543,754.76'	595,620.23'
37	3,539,643.00'	592,918.02'	50	3,544,087.43'	595,851.66'
38	3,540,456.94'	593,460.26'	51	3,544,400.82'	596,073.44'
39	3,540,779.97'	593,662.76'	52	3,544,723.85'	596,285.58'
40	3,541,189.79'	593,932.75'	53	3,545,061.35'	596,507.36'
41	3,541,430.86'	594,111.14'	54	3,545,384.38'	596,729.15'
42	3,541,792.46'	594,323.28'	55	3,545,726.70'	596,979.86'
43	3,542,115.49'	594,545.07'	56	3,546,049.73'	597,192.00'
44	3,542,428.88'	594,742.74'	57	3,546,358.30'	597,404.14'
45	3,542,761.56'	594,964.53'	58	3,546,454.72'	597,481.28'
46	3,543,099.05'	595,176.67'	59	3,546,695.79'	597,616.28'
47	3,543,331.00'	595,338.02'	60	3,547,023.65'	597,871.81'
48	3,543,417.26'	595,398.45'	61	3,547,361.14'	598,083.95'

PANTHER INTERSTATE PIPELINE ENERGY, LLC

**PIPELINE ABANDONMENT
16" GAS PIPELINE (SEG #5895)
BLOCK 139 TO 48
HIGH ISLAND AREA
GULF OF MEXICO**

Geodetic Datum: NAD27
 Projection: TEXAS SOUTH CENTRAL
 Grid Units: US SURVEY FEET

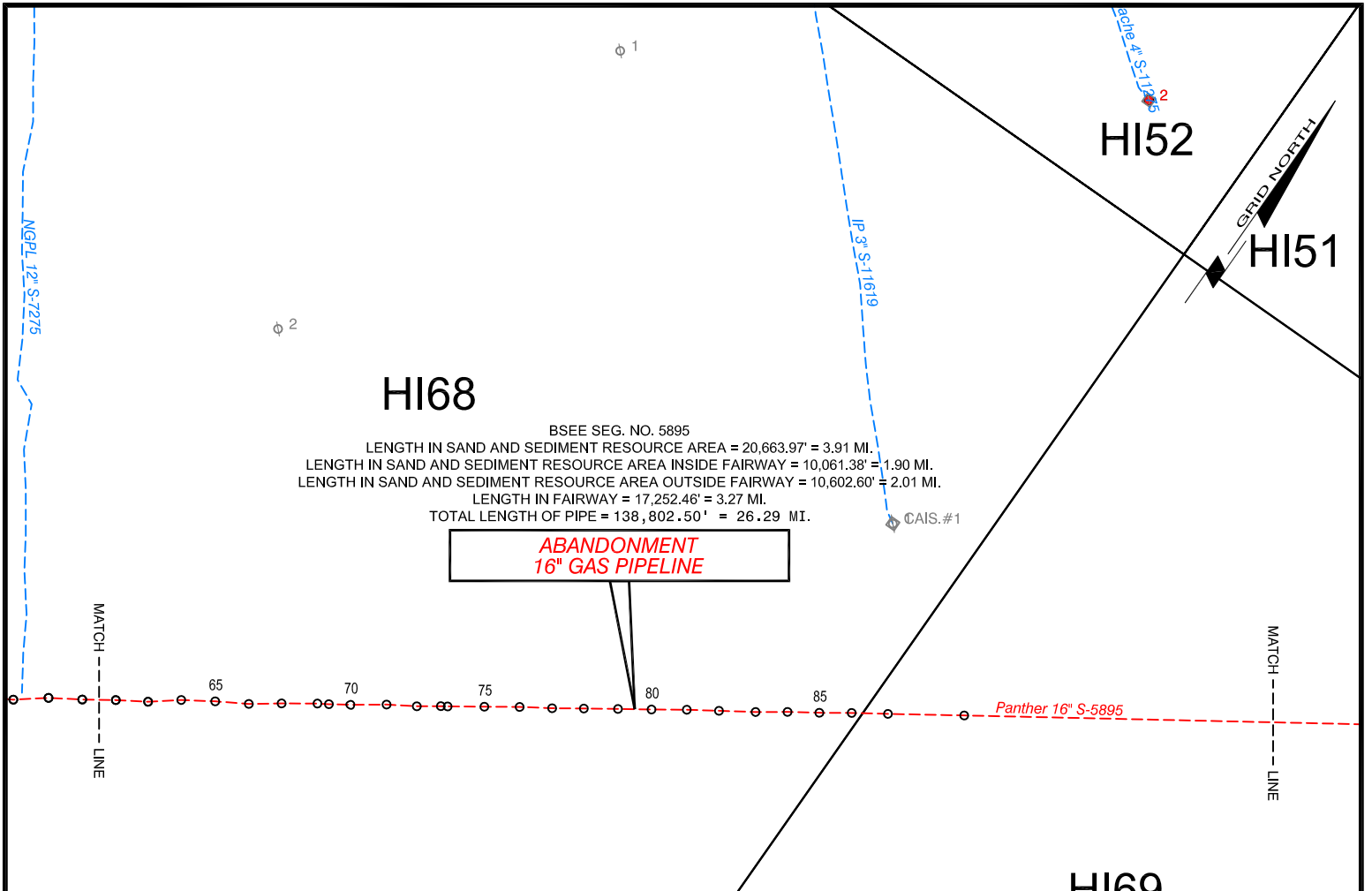
SCALE 1:24000

Job No.: 17170620 Date: 10/23/2017

DWG File: 1717062001_AB_S5895

FUGRO USA MARINE, INC.
 200 Dulles Drive
 Lafayette, Louisiana 70506
 (337) 237-1300

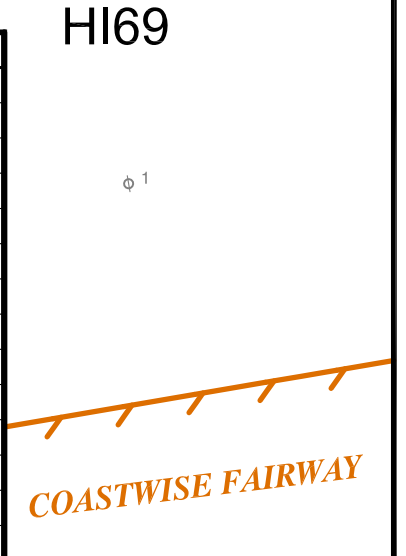
Drwn: MM Chart: 6 Of: 12
 10/23/2017



BSEE SEG. NO. 5895
 LENGTH IN SAND AND SEDIMENT RESOURCE AREA = 20,663.97' = 3.91 MI.
 LENGTH IN SAND AND SEDIMENT RESOURCE AREA INSIDE FAIRWAY = 10,061.38' = 1.90 MI.
 LENGTH IN SAND AND SEDIMENT RESOURCE AREA OUTSIDE FAIRWAY = 10,602.60' = 2.01 MI.
 LENGTH IN FAIRWAY = 17,252.46' = 3.27 MI.
 TOTAL LENGTH OF PIPE = 138,802.50' = 26.29 MI.

**ABANDONMENT
 16" GAS PIPELINE**

16" (S-5895) ABANDONED PIPELINE			Tie	X Coordinate	Y Coordinate
			75	3,551,295.38'	600,735.70'
Tie	X Coordinate	Y Coordinate	76	3,551,637.70'	600,971.95'
62	3,547,688.99'	598,305.74'	77	3,551,960.73'	601,179.27'
63	3,548,012.03'	598,508.23'	78	3,552,269.29'	601,391.41'
64	3,548,320.59'	598,749.30'	79	3,552,601.97'	601,618.02'
65	3,548,658.09'	598,966.26'	80	3,552,929.82'	601,839.80'
66	3,549,000.41'	599,168.76'	81	3,553,272.14'	602,076.05'
67	3,549,313.80'	599,395.36'	82	3,553,590.35'	602,283.36'
68	3,549,660.93'	599,636.43'	83	3,553,951.95'	602,519.61'
69	3,549,776.00'	599,708.02'	84	3,554,260.52'	602,736.57'
70	3,549,988.79'	599,848.57'	85	3,554,573.91'	602,943.89'
71	3,550,335.93'	600,094.46'	86	3,554,887.30'	603,160.85'
72	3,550,639.67'	600,282.50'	87	3,555,244.08'	603,397.10'
73	3,550,871.10'	600,446.42'	88	3,555,992.00'	603,898.02'
74	3,550,938.60'	600,489.82'			



PANTHER INTERSTATE PIPELINE ENERGY, LLC

**PIPELINE ABANDONMENT
 16" GAS PIPELINE (SEG #5895)**
 BLOCK 139 TO 48
 HIGH ISLAND AREA
 GULF OF MEXICO

Geodetic Datum: NAD27
 Projection: TEXAS SOUTH CENTRAL
 Grid Units: US SURVEY FEET

SCALE
 1:24000

FUGRO USA MARINE, INC.
 200 Dulles Drive
 Lafayette, Louisiana 70506
 (337) 237-1300

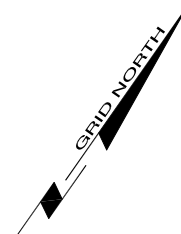
Job No.: 17170620 Date: 10/23/2017 Drwn: MM Chart: Of: 12

DWG File: 1717062001_AB_S5895

HI52

φ 2

φ 1



HI51

BSEE SEG. NO. 5895
 LENGTH IN SAND AND SEDIMENT RESOURCE AREA = 20,663.97' = 3.91 MI.
 LENGTH IN SAND AND SEDIMENT RESOURCE AREA INSIDE FAIRWAY = 10,061.38' = 1.90 MI.
 LENGTH IN SAND AND SEDIMENT RESOURCE AREA OUTSIDE FAIRWAY = 10,602.60' = 2.01 MI.
 LENGTH IN FAIRWAY = 17,252.46' = 3.27 MI.
 TOTAL LENGTH OF PIPE = 138,802.50' = 26.29 MI.

**ABANDONMENT
 16" GAS PIPELINE**

Panther 16" S-5895

MATCH --- LINE

MATCH --- LINE

φ 3

HI69

HI50

COASTWISE FAIRWAY

HI70

16" (S-5895) ABANDONED PIPELINE

Tie	X Coordinate	Y Coordinate
89	3,566,848.00'	611,146.02'

PANTHER INTERSTATE PIPELINE ENERGY, LLC

**PIPELINE ABANDONMENT
 16" GAS PIPELINE (SEG #5895)
 BLOCK 139 TO 48
 HIGH ISLAND AREA
 GULF OF MEXICO**

Geodetic Datum: NAD27
 Projection: TEXAS SOUTH CENTRAL
 Grid Units: US SURVEY FEET

SCALE 1:24000
 0 2000
 FEET



FUGRO USA MARINE, INC.
 200 Dulles Drive
 Lafayette, Louisiana 70506
 (337) 237-1300

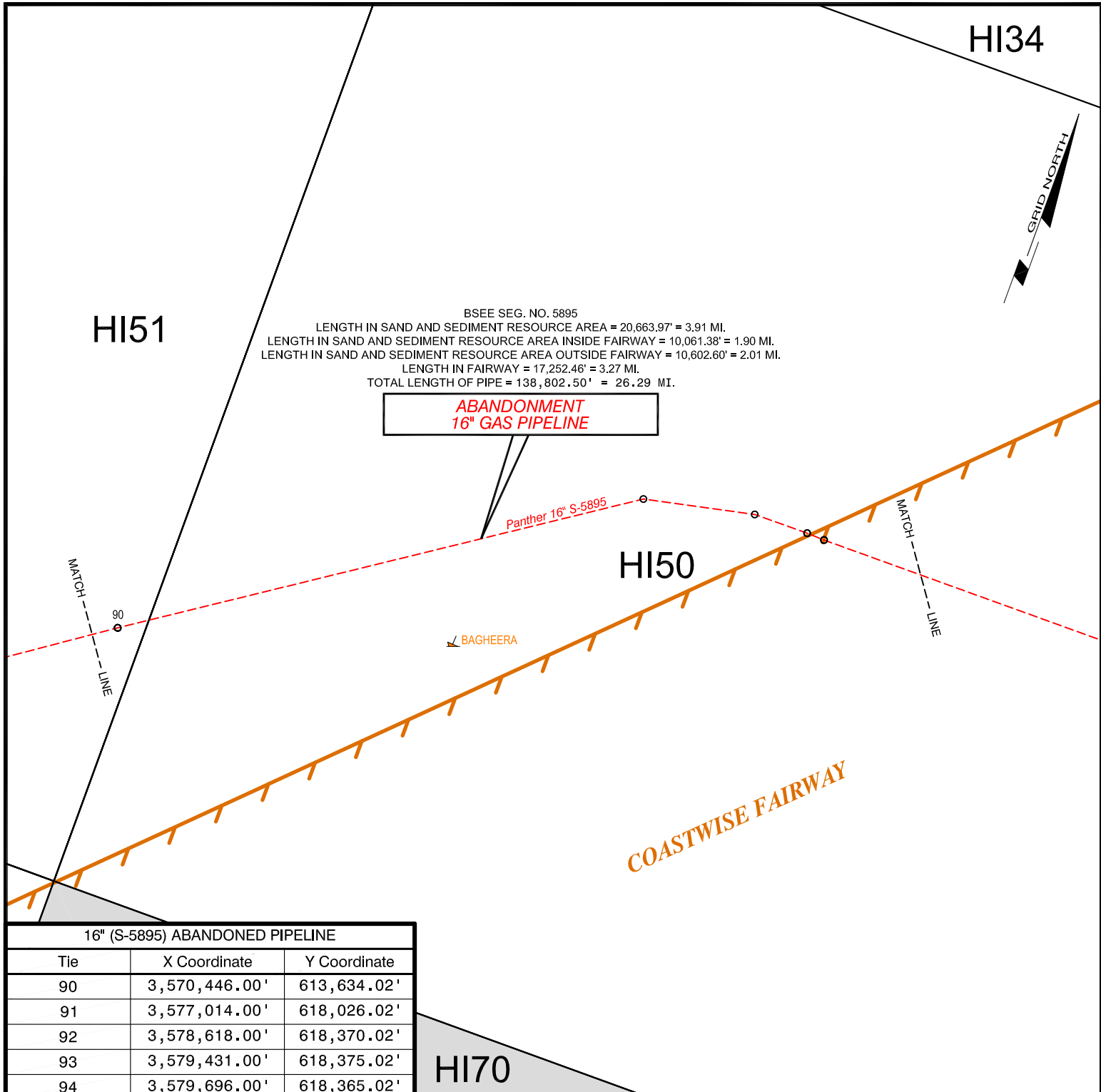
Job No.: 17170620 Date: 10/23/2017

Drwn: MM

Chart: 8 Of: 12

DWG File: 1717062001_AB_S5895

10/23/2017



BSEE SEG. NO. 5895
 LENGTH IN SAND AND SEDIMENT RESOURCE AREA = 20,663.97' = 3.91 MI.
 LENGTH IN SAND AND SEDIMENT RESOURCE AREA INSIDE FAIRWAY = 10,061.38' = 1.90 MI.
 LENGTH IN SAND AND SEDIMENT RESOURCE AREA OUTSIDE FAIRWAY = 10,602.60' = 2.01 MI.
 LENGTH IN FAIRWAY = 17,252.46' = 3.27 MI.
 TOTAL LENGTH OF PIPE = 138,802.50' = 26.29 MI.

**ABANDONMENT
 16" GAS PIPELINE**

16" (S-5895) ABANDONED PIPELINE		
Tie	X Coordinate	Y Coordinate
90	3,570,446.00'	613,634.02'
91	3,577,014.00'	618,026.02'
92	3,578,618.00'	618,370.02'
93	3,579,431.00'	618,375.02'
94	3,579,696.00'	618,365.02'

PANTHER INTERSTATE PIPELINE ENERGY, LLC

**PIPELINE ABANDONMENT
 16" GAS PIPELINE (SEG #5895)
 BLOCK 139 TO 48
 HIGH ISLAND AREA
 GULF OF MEXICO**

Geodetic Datum: NAD27
 Projection: TEXAS SOUTH CENTRAL
 Grid Units: US SURVEY FEET

SCALE 1:24000



Job No.: 17170620 Date: 10/23/2017 Drwn: MM Chart: 9 Of: 12
 DWG File: 1717062001_AB_S5895

HI34

HI35

HI50

HI49



BSEE SEG. NO. 5895
 LENGTH IN SAND AND SEDIMENT RESOURCE AREA = 20,663.97' = 3.91 MI.
 LENGTH IN SAND AND SEDIMENT RESOURCE AREA INSIDE FAIRWAY = 10,061.38' = 1.90 MI.
 LENGTH IN SAND AND SEDIMENT RESOURCE AREA OUTSIDE FAIRWAY = 10,602.60' = 2.01 MI.
 LENGTH IN FAIRWAY = 17,252.46' = 3.27 MI.
 TOTAL LENGTH OF PIPE = 138,802.50' = 26.29 MI.

**ABANDONMENT
 16" GAS PIPELINE**

Panther 16" S-5895

COASTWISE FAIRWAY

16" (S-5895) ABANDONED PIPELINE

Tie	X Coordinate	Y Coordinate
93	3,579,431.00'	618,375.02'
94	3,579,696.00'	618,365.02'
95	3,590,598.00'	618,388.02'
96	3,592,622.00'	618,307.02'

PANTHER INTERSTATE PIPELINE ENERGY, LLC

**PIPELINE ABANDONMENT
 16" GAS PIPELINE (SEG #5895)
 BLOCK 139 TO 48
 HIGH ISLAND AREA
 GULF OF MEXICO**

Geodetic Datum: NAD27
 Projection: TEXAS SOUTH CENTRAL
 Grid Units: US SURVEY FEET

SCALE 0 2000
 1:24000 FEET

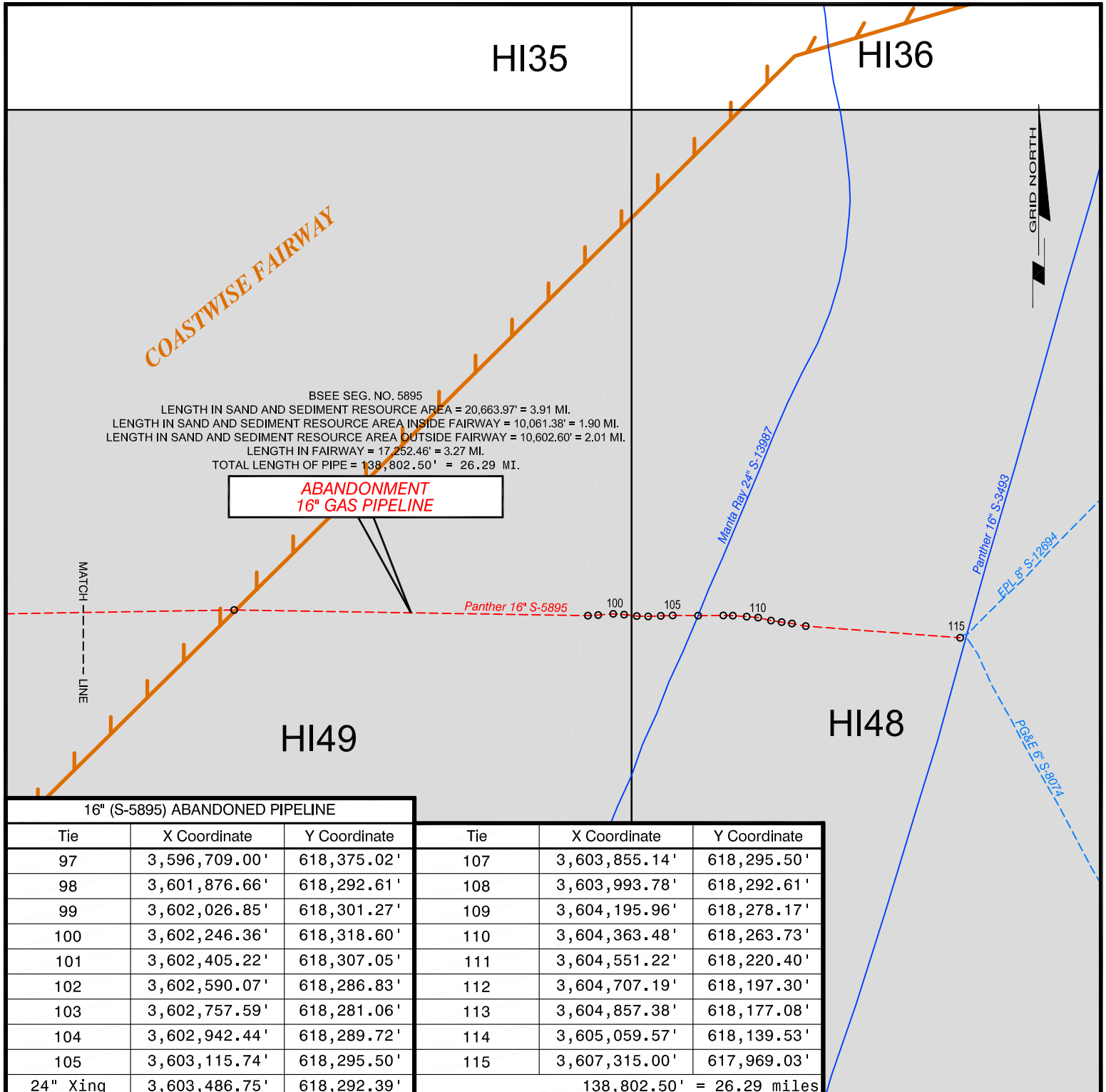


FUGRO USA MARINE, INC.
 200 Dulles Drive
 Lafayette, Louisiana 70506
 (337) 237-1300

Job No.: 17170620 Date: 10/23/2017
 DWG File: 1717062001_AB_S5895

Drwn: MM

Chart: Of: 10 12
 10/23/2017



BSEE SEG. NO. 5895
 LENGTH IN SAND AND SEDIMENT RESOURCE AREA = 20,663.97' = 3.91 MI.
 LENGTH IN SAND AND SEDIMENT RESOURCE AREA INSIDE FAIRWAY = 10,061.38' = 1.90 MI.
 LENGTH IN SAND AND SEDIMENT RESOURCE AREA OUTSIDE FAIRWAY = 10,602.60' = 2.01 MI.
 LENGTH IN FAIRWAY = 17,252.46' = 3.27 MI.
 TOTAL LENGTH OF PIPE = 138,802.50' = 26.29 MI.

**ABANDONMENT
 16" GAS PIPELINE**

16" (S-5895) ABANDONED PIPELINE					
Tie	X Coordinate	Y Coordinate	Tie	X Coordinate	Y Coordinate
97	3,596,709.00'	618,375.02'	107	3,603,855.14'	618,295.50'
98	3,601,876.66'	618,292.61'	108	3,603,993.78'	618,292.61'
99	3,602,026.85'	618,301.27'	109	3,604,195.96'	618,278.17'
100	3,602,246.36'	618,318.60'	110	3,604,363.48'	618,263.73'
101	3,602,405.22'	618,307.05'	111	3,604,551.22'	618,220.40'
102	3,602,590.07'	618,286.83'	112	3,604,707.19'	618,197.30'
103	3,602,757.59'	618,281.06'	113	3,604,857.38'	618,177.08'
104	3,602,942.44'	618,289.72'	114	3,605,059.57'	618,139.53'
105	3,603,115.74'	618,295.50'	115	3,607,315.00'	617,969.03'
24" Xing	3,603,486.75'	618,292.39'	138,802.50' = 26.29 miles		

PANTHER INTERSTATE PIPELINE ENERGY, LLC

**PIPELINE ABANDONMENT
 16" GAS PIPELINE (SEG #5895)**

BLOCK 139 TO 48
 HIGH ISLAND AREA
 GULF OF MEXICO

Geodetic Datum: NAD27
 Projection: TEXAS SOUTH CENTRAL
 Grid Units: US SURVEY FEET

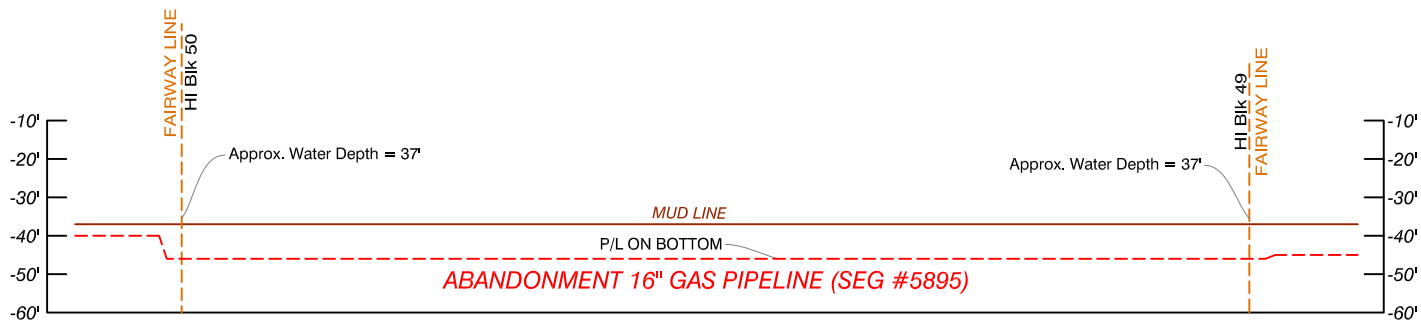
SCALE 1:24000
 0 2000 FEET



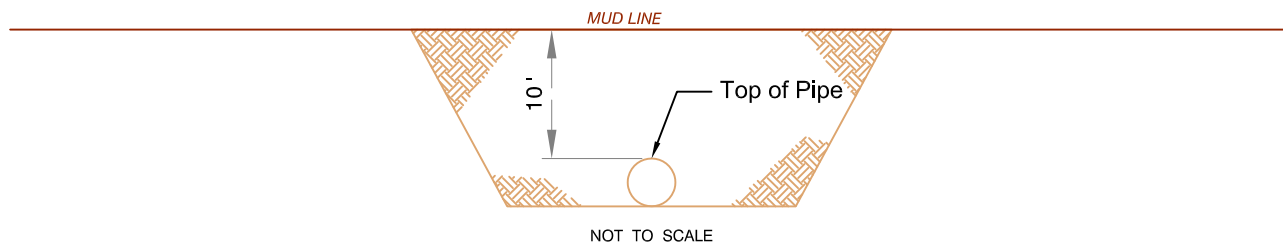
FUGRO USA MARINE, INC.
 200 Dulles Drive
 Lafayette, Louisiana 70506
 (337) 237-1300

Job No.: 17170620 Date: 10/23/2017
 DWG File: 1717062001_AB_S5895

Drwn: MM Chart: 11 Of: 12
 10/23/2017



PROFILE ACROSS FAIRWAY



CROSS-SECTION PIPE CROSSING FAIRWAY

PANTHER INTERSTATE PIPELINE ENERGY, LLC

**PIPELINE ABANDONMENT
16" GAS PIPELINE (SEG #5895)
BLOCK 139 TO 48
HIGH ISLAND AREA
GULF OF MEXICO**

Geodetic Datum: NAD27
Projection: TEXAS SOUTH CENTRAL
Grid Units: US SURVEY FEET



FUGRO USA MARINE, INC.
200 Dulles Drive
Lafayette, Louisiana 70506
(337) 237-1300

SCALE AS SHOWN

Job No.: 17170620 Date: 10/23/2017

Drwn: MM

Chart: Of: 12 12

DWG File: 1717062001_AB_S5895

10/23/2017