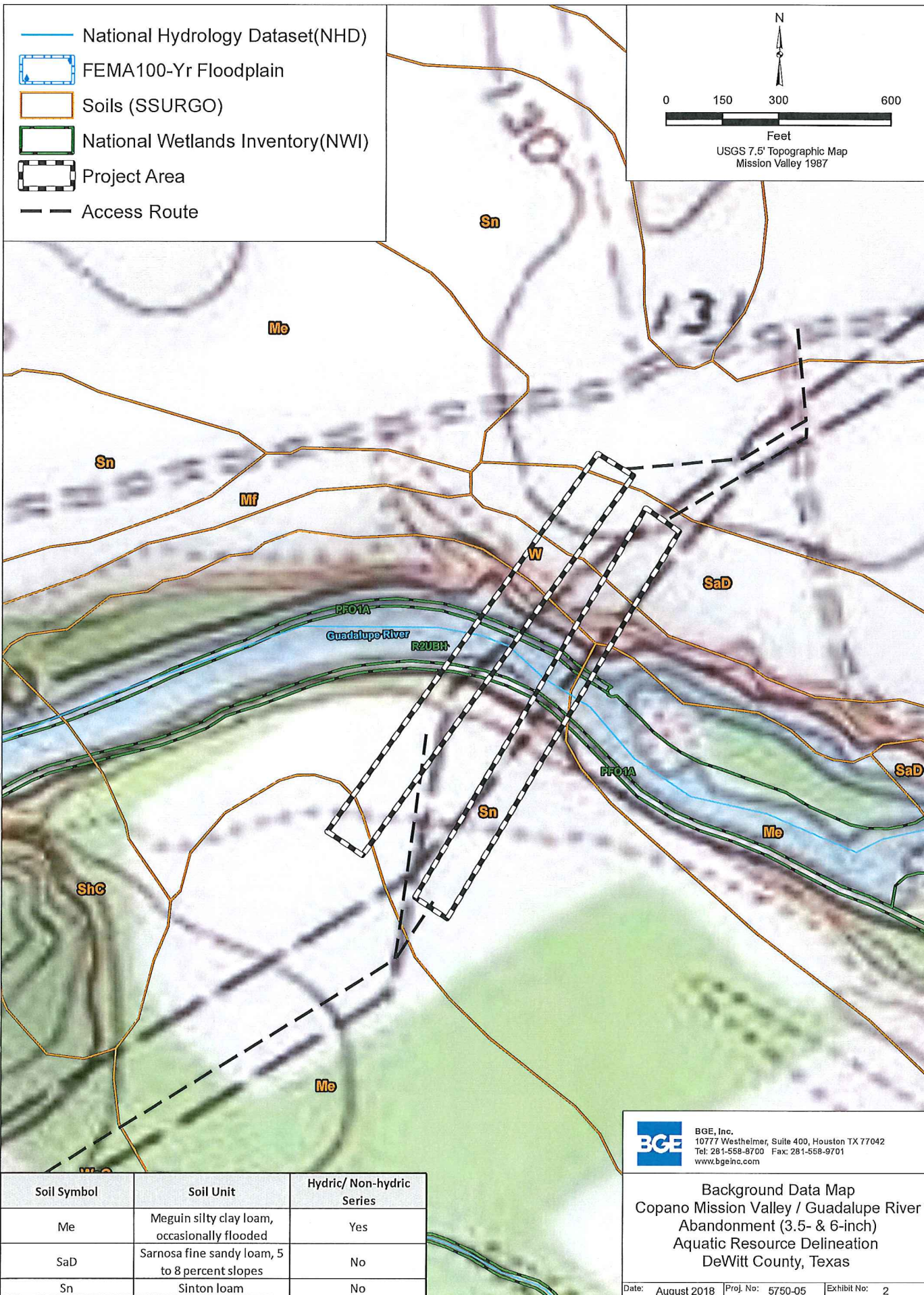


G:\TX\H\Projects\Kinder_Morgan\5750-05_Guadalupe_River_Project\GIS\Wetland\Exhibits\Ex1_Vicinity_20180906.mxd

BGE BGE, Inc.
 10777 Westheimer, Suite 400, Houston TX 77042
 Tel: 281-558-8700 Fax: 281-558-9701
 www.bgeinc.com

Vicinity Map
 Copano Mission Valley / Guadalupe River
 Abandonment (3.5- & 6-inch)
 Aquatic Resource Delineation
 DeWitt County, Texas

Date: August 2018 | Proj. No: 5750-05 | Exhibit No: 1





G:\TX\H\Projects\K\nder_Morgan\5750-05_Guadalupe_River_Project\GIS\Wetland\Exhibits\Ex2_BackgroundData_20180806.mxd

BGE, Inc.
10777 Westheimer, Suite 400, Houston TX 77042
Tel: 281-558-8700 Fax: 281-558-9701
www.bgeinc.com


Background Data Map
Copano Mission Valley / Guadalupe River
Abandonment (3.5- & 6-inch)
Aquatic Resource Delineation
DeWitt County, Texas

Date: August 2018 | Proj. No: 5750-05 | Exhibit No: 2


 Project Area

 Access Route


Data Point Type

 Upland

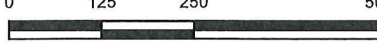
Mapped Aquatic Resources

 Streams

N

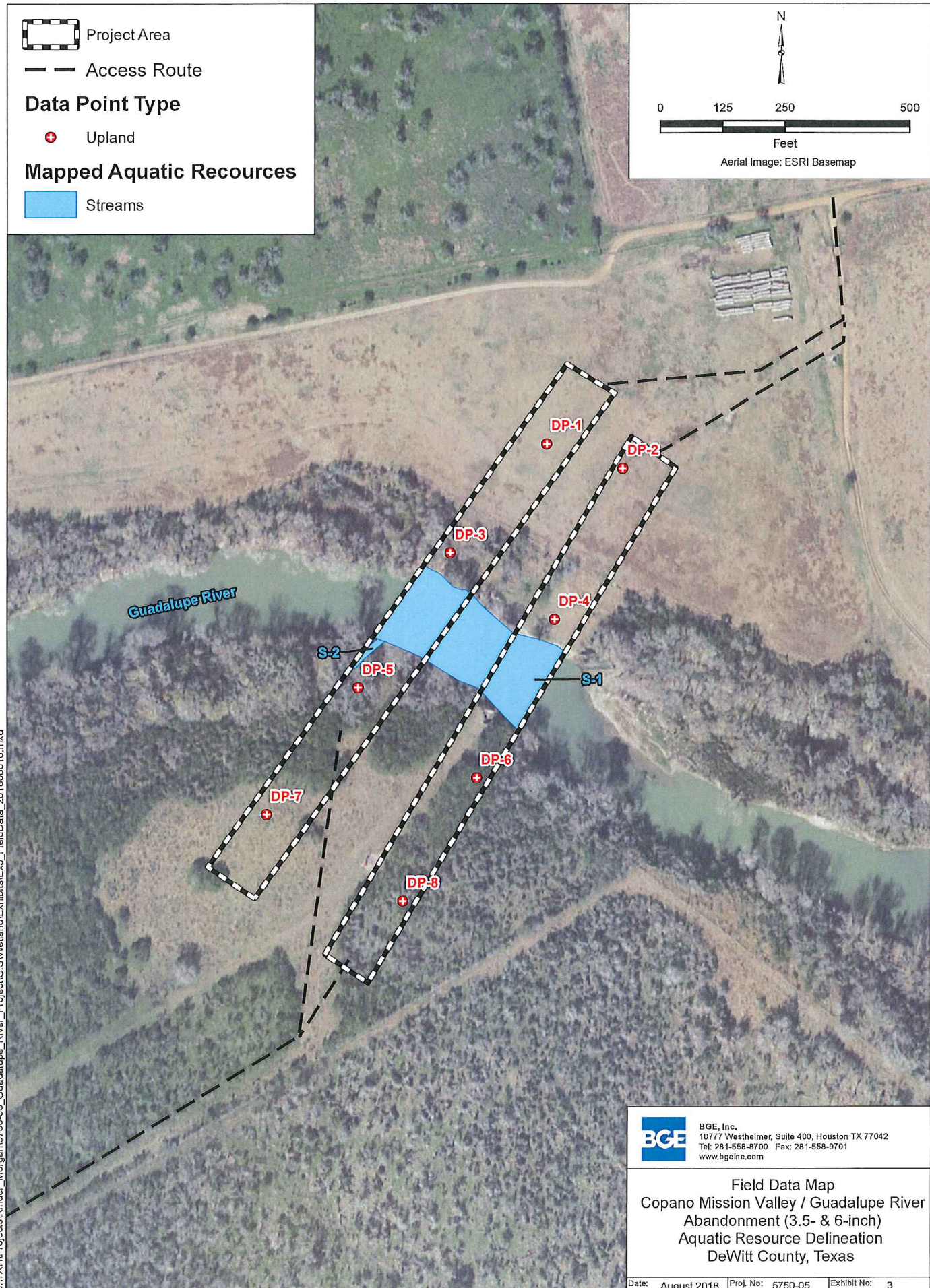


0 125 250 500



Feet

Aerial Image: ESRI Basemap



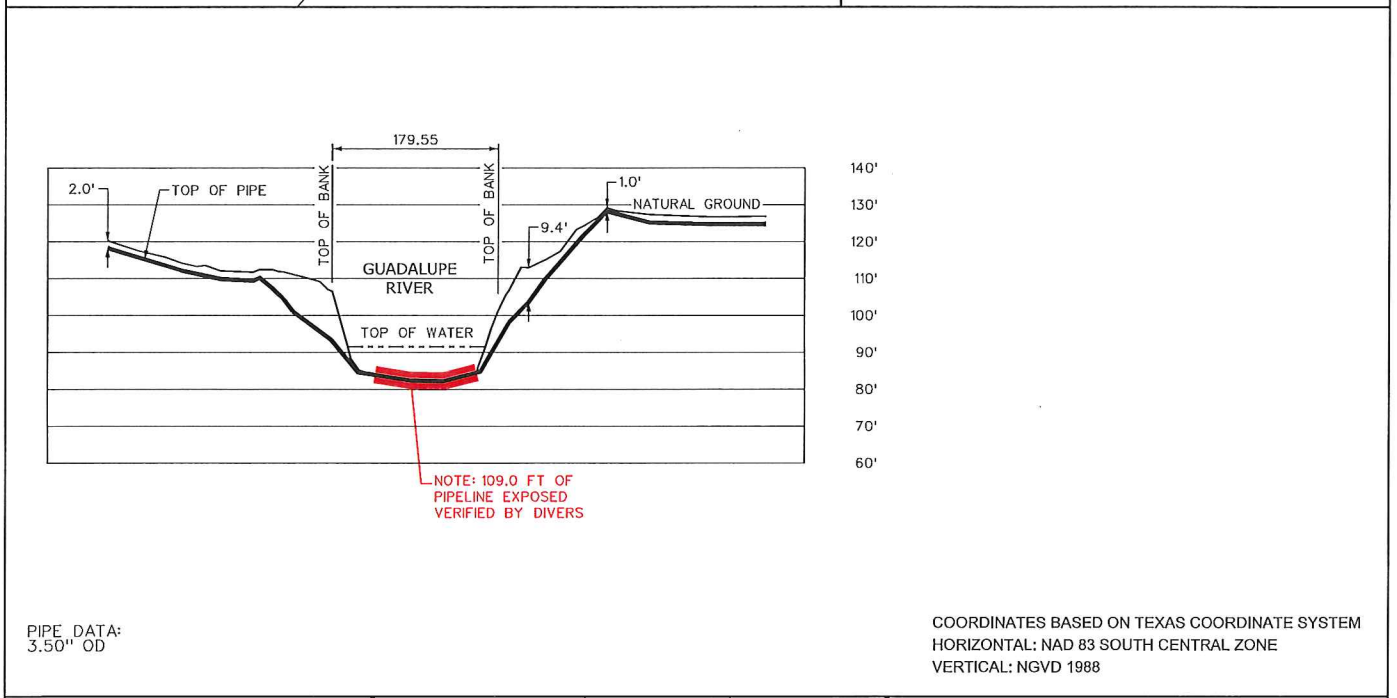
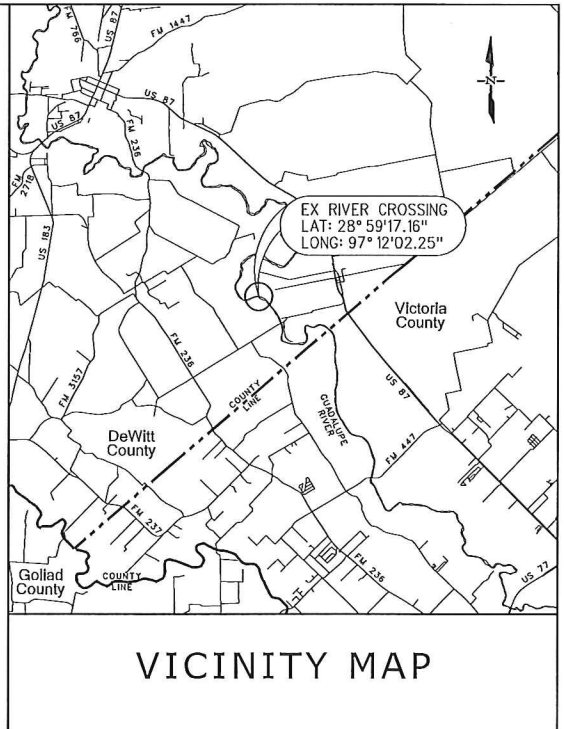
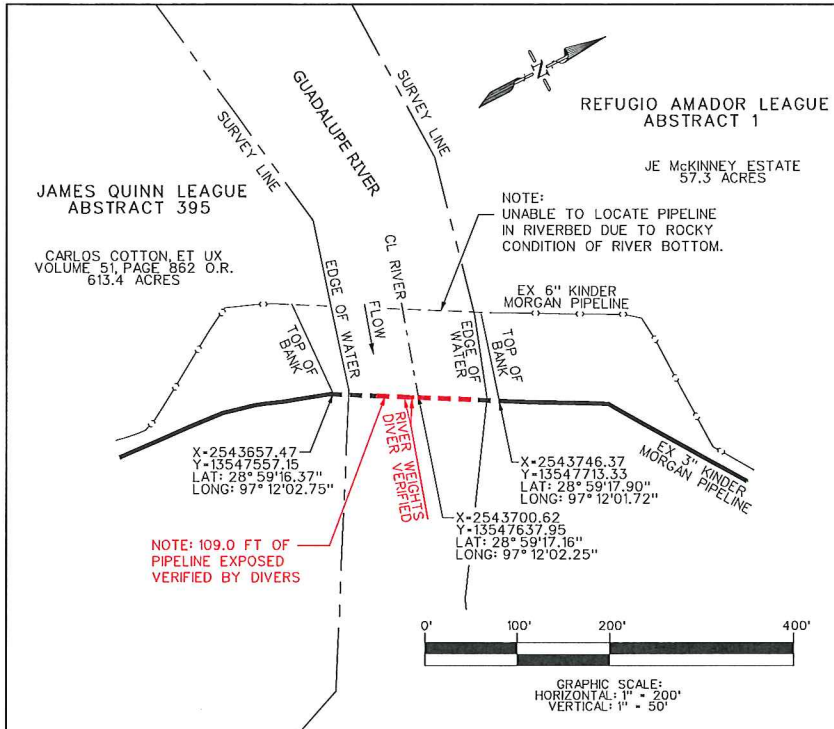
G:\TX\H\Projects\Kinder_Morgan\5750-05_Guadalupe_River_Project\GIS\Wetland\Exhibits\Ex3_FieldData_20180810.mxd

 BGE, Inc.
 10777 Westheimer, Suite 400, Houston TX 77042
 Tel: 281-558-8700 Fax: 281-558-9701
 www.bgeinc.com

Field Data Map
 Copano Mission Valley / Guadalupe River
 Abandonment (3.5- & 6-inch)
 Aquatic Resource Delineation
 DeWitt County, Texas

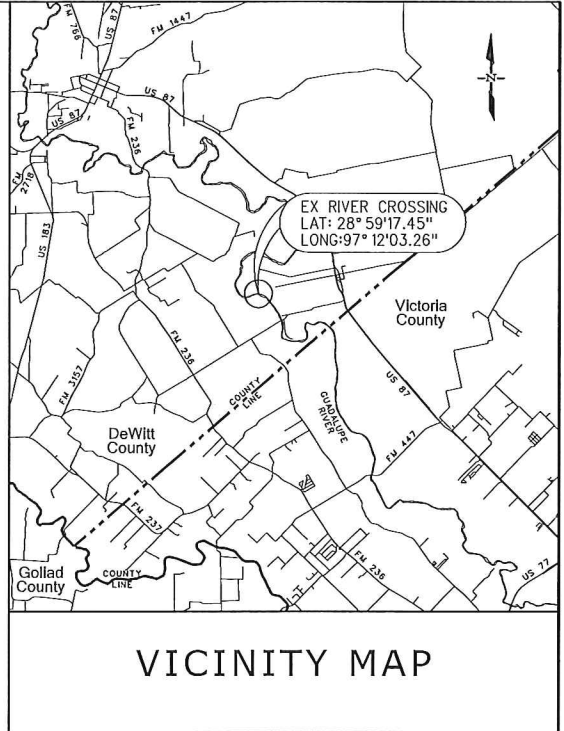
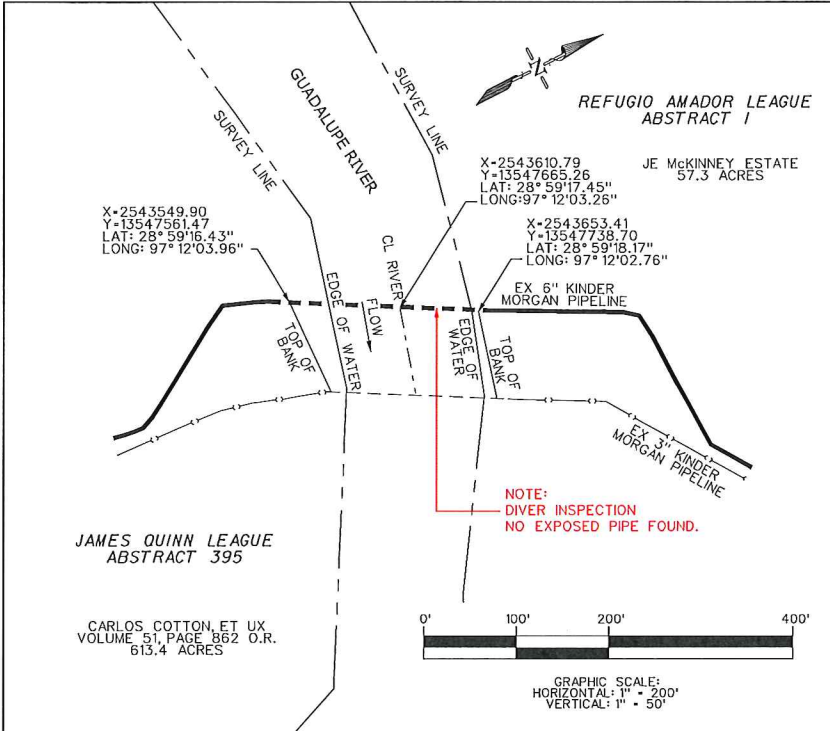
Date: August 2018 | Proj. No: 5750-05 | Exhibit No: 3

SEP 28 2018

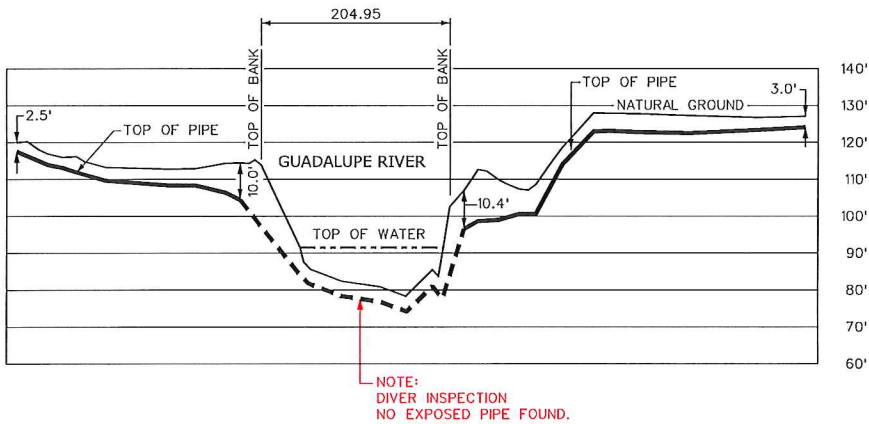


DRAWN BY G&K/GKS 09-05-18 SCALE: 1" = 200' JOB NO: PC18-121 REVISION: ' PREPARED BY: G.K.S. GANEM & KELLY SURVEYING, INC. LAMAR STREET, SUITE 5 POINT COMFORT, TEXAS 77978 (361) 987-2011 FIRM NO. 10080300	PREPARED FOR: KINDER MORGAN COPANO ENERGY, L.L.C. 1001 LOUISIANA STREET, SUITE 1000 HOUSTON, TEXAS 77002 GUADALUPE RIVER CROSSING
	AS-BUILT 3" PIPELINE DEWITT COUNTY, TEXAS
	FIRM NO. F-9183 SHEET NO. 1

SEP 28 2018




UNABLE TO LOCATE PIPELINE DEPTH
IN RIVER BED DUE TO ROCKY SUBSTRATE



PIPE DATA:
6.625" OD X 0.260" WT
PRODUCT - NATURAL GAS

COORDINATES BASED ON TEXAS COORDINATE SYSTEM
HORIZONTAL: NAD 83 SOUTH CENTRAL ZONE
VERTICAL: NGVD 1988

	DRAWN BY	G&K/GKS	09-05-18	PREPARED FOR:  COPANO ENERGY, L.L.C. 1001 LOUISIANA STREET, SUITE 1000 HOUSTON, TEXAS 77002 GUADALUPE RIVER CROSSING
	SCALE:	1" = 200'		
	JOB NO:	PC18-121		
	REVISION:			
	PREPARED BY:	G.K.S.		AS-BUILT 6" NATURAL GAS PIPELINE DEWITT COUNTY, TEXAS FIRM NO. F-9183 SHEET NO. 1
	GANEM & KELLY SURVEYING, INC. LAMAR STREET, SUITE 5 POINT COMFORT, TEXAS 77978 (361) 987-2011 FIRM NO. 10080300			