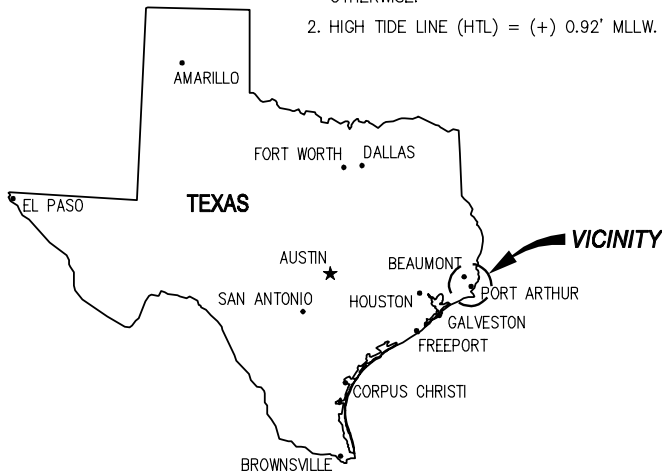


GENERAL NOTES

1. ALL ELEVATIONS REFER TO M.L.L.W. UNLESS NOTED OTHERWISE.
2. HIGH TIDE LINE (HTL) = (+) 0.92' MLLW.



LAT: 30°04'41"N
LONG: 94°04'45"W

AREA MAP

DRAWING INDEX		
DRAWING NUMBER	DESCRIPTION	DATE SUBMITTED OR AUTHORIZED
1	VICINITY MAP AND DRAWING INDEX	OCTOBER 2019
2	LOCATION MAP	OCTOBER 2019
3	AERIAL IMAGE	OCTOBER 2019
4	SITE PLAN	OCTOBER 2019
5	OVERALL DREDGE PLAN	OCTOBER 2019
6	WEST DREDGE PLAN	OCTOBER 2019
7	EAST DREDGE PLAN	OCTOBER 2019
8	DREDGE PLACEMENT AREAS	OCTOBER 2019

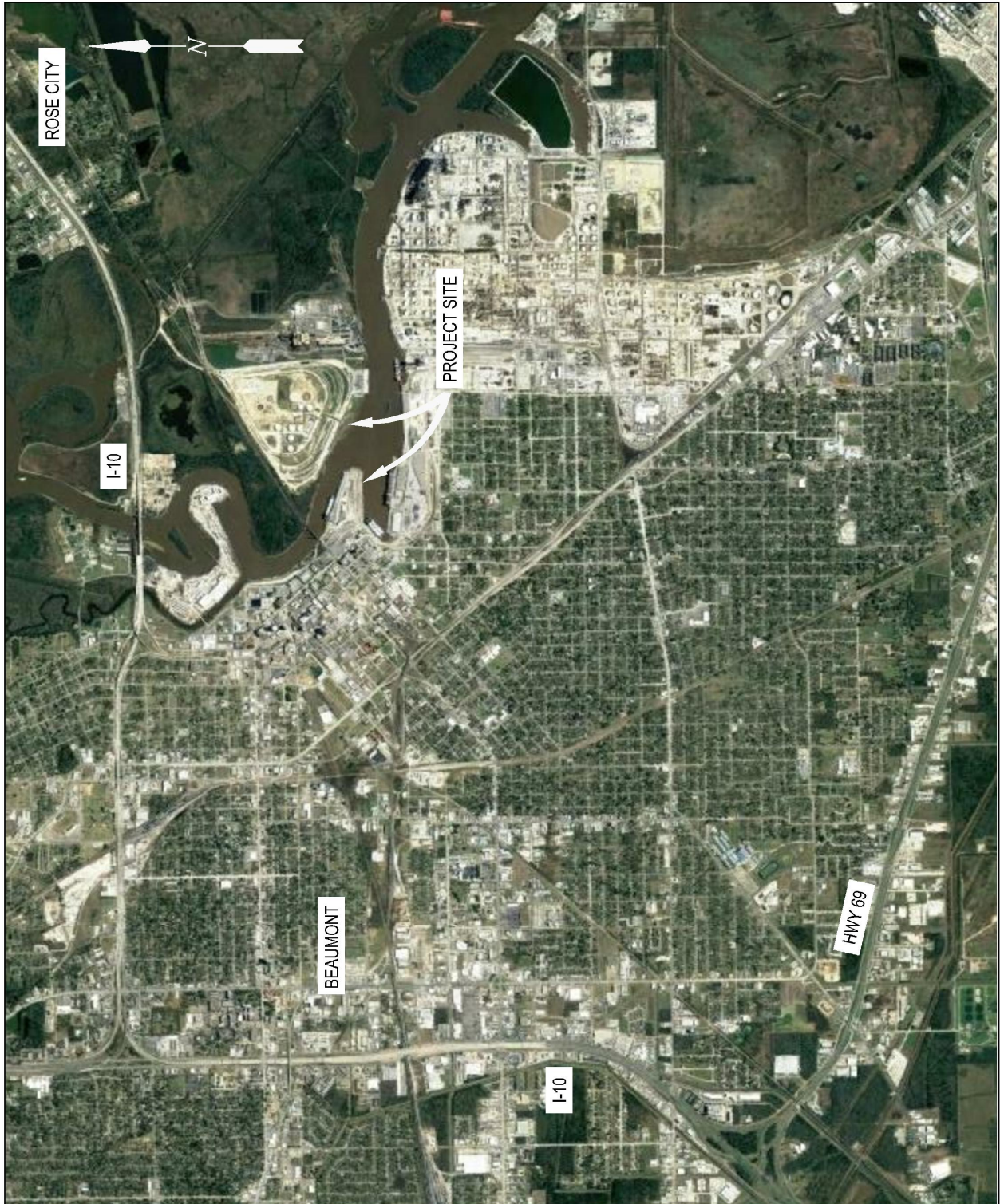
11082-CP01

LANIER & ASSOCIATES
CONSULTING ENGINEERS
INCORPORATED
FIRM F-2981
NEW ORLEANS, LA · BEAUMONT, TX

PORT OF BEAUMONT
BEAUMONT TEXAS

MAINTENANCE DREDGING
SWG-1997-01754
VICINITY MAP AND DRAWING INDEX

DATE OCT '19
DESIGN CSG
DRAWN ADG
CHECK DLC
CONTRACT 11082
SHEET No.
1 OF 8



11082-CP02



LANIER & ASSOCIATES
CONSULTING ENGINEERS
INCORPORATED
FIRM F-2981
NEW ORLEANS, LA BEAUMONT, TX

BEAUMONT

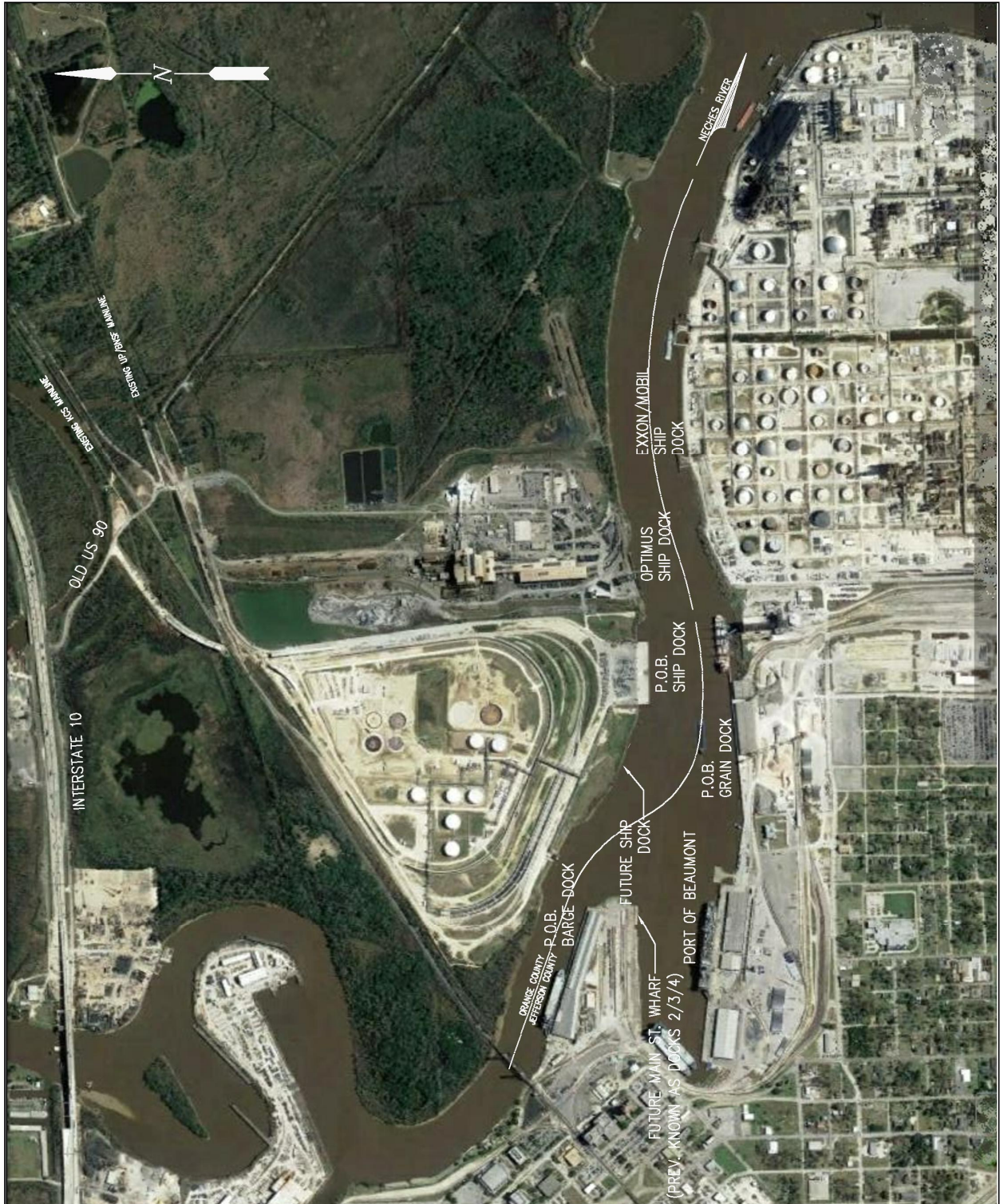
PORT OF BEAUMONT

TEXAS

**MAINTENANCE DREDGING
SWG-1997-01754
LOCATION MAP**

DATE OCT '19
DESIGN CSG
DRAWN ADG
CHECK DLC
CONTRACT 11082
SHEET No.

2 OF 8



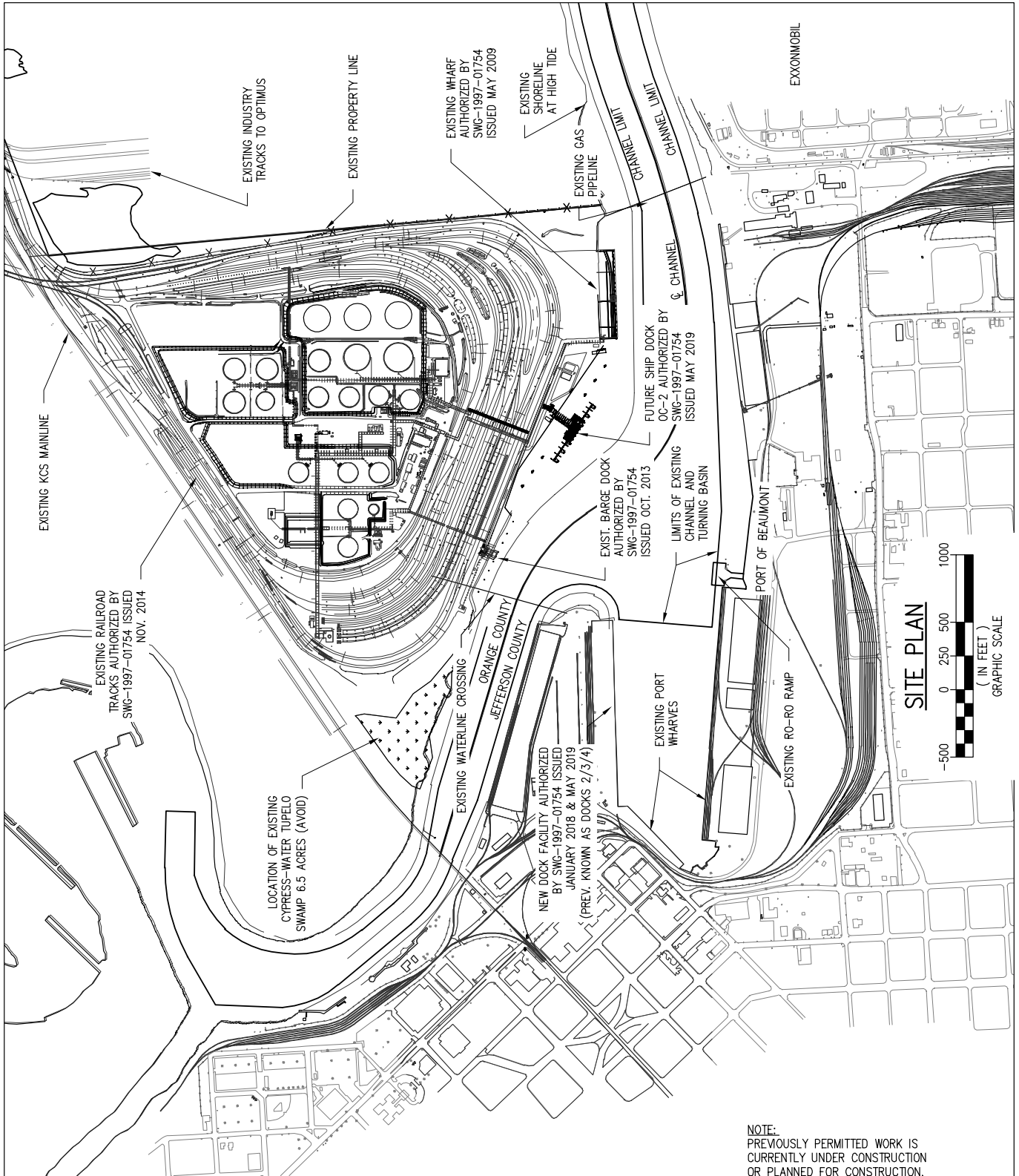
11082-CP03

LANIER & ASSOCIATES
 CONSULTING ENGINEERS
 INCORPORATED
 FIRM F-2981
 NEW ORLEANS, LA · BEAUMONT, TX

PORT OF BEAUMONT
 BEAUMONT TEXAS

MAINTENANCE DREDGING
SWG-1997-01754
AERIAL IMAGE

DATE OCT '19
 DESIGN CSG
 DRAWN ADG
 CHECK DLC
 CONTRACT 11082
 SHEET No.
3 OF 8



NOTE:
PREVIOUSLY PERMITTED WORK IS
CURRENTLY UNDER CONSTRUCTION
OR PLANNED FOR CONSTRUCTION.

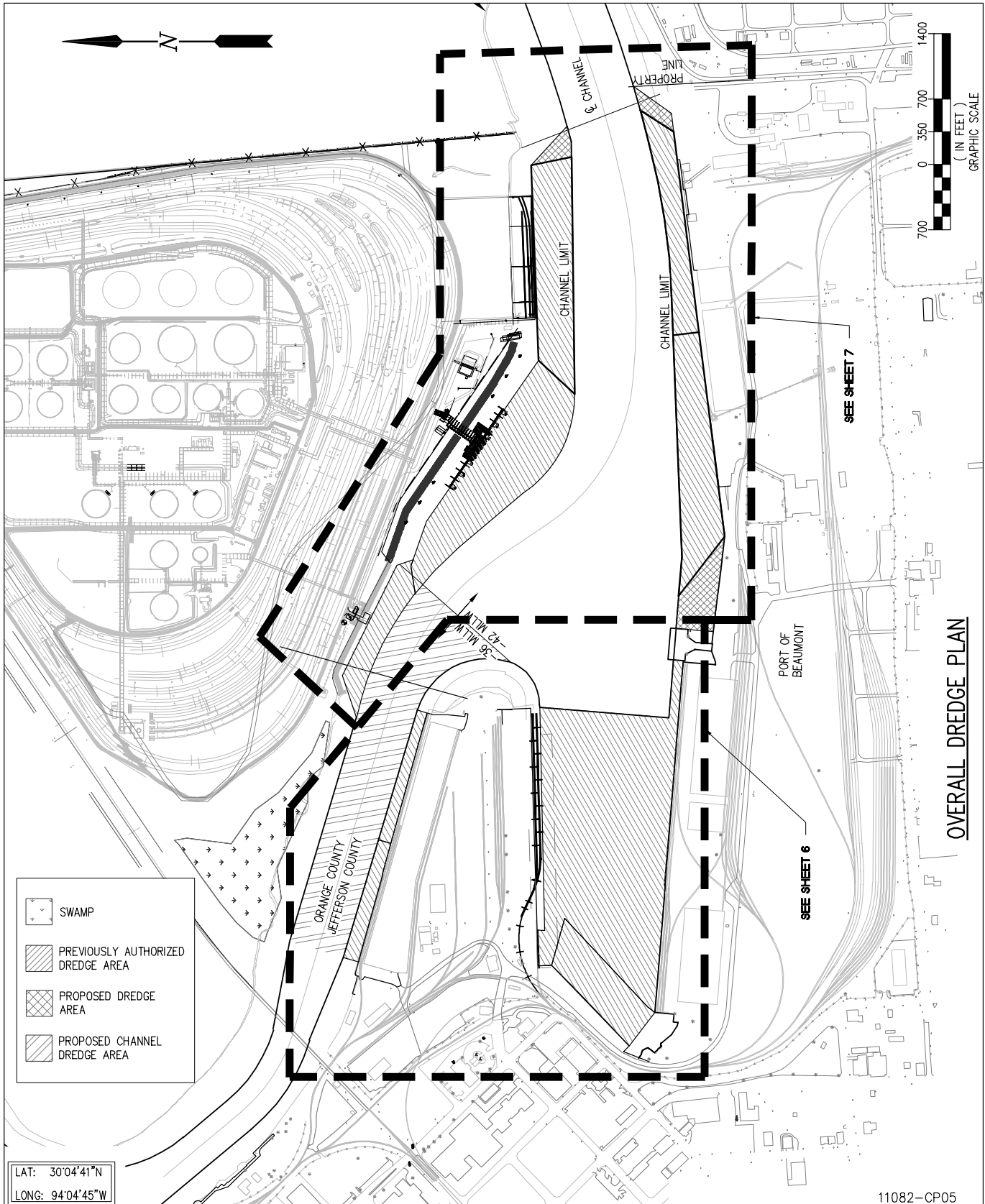
LAT: 30°04'41"N
LONG: 94°04'45"W

11082-CP04

LANIER & ASSOCIATES
CONSULTING ENGINEERS
INCORPORATED
FIRM F-2981
NEW ORLEANS, LA · BEAUMONT, TX

PORT OF BEAUMONT
BEAUMONT TEXAS
MAINTENANCE DREDGING
SWG-1997-01754
SITE PLAN

DATE OCT '19
DESIGN CSG
DRAWN ADG
CHECK DLC
CONTRACT 11082
SHEET No.
4 OF **8**



OVERALL DREDGE PLAN

- SWAMP
- PREVIOUSLY AUTHORIZED DREDGE AREA
- PROPOSED DREDGE AREA
- PROPOSED CHANNEL DREDGE AREA

LAT: 30°04'41"N
LONG: 94°04'45"W

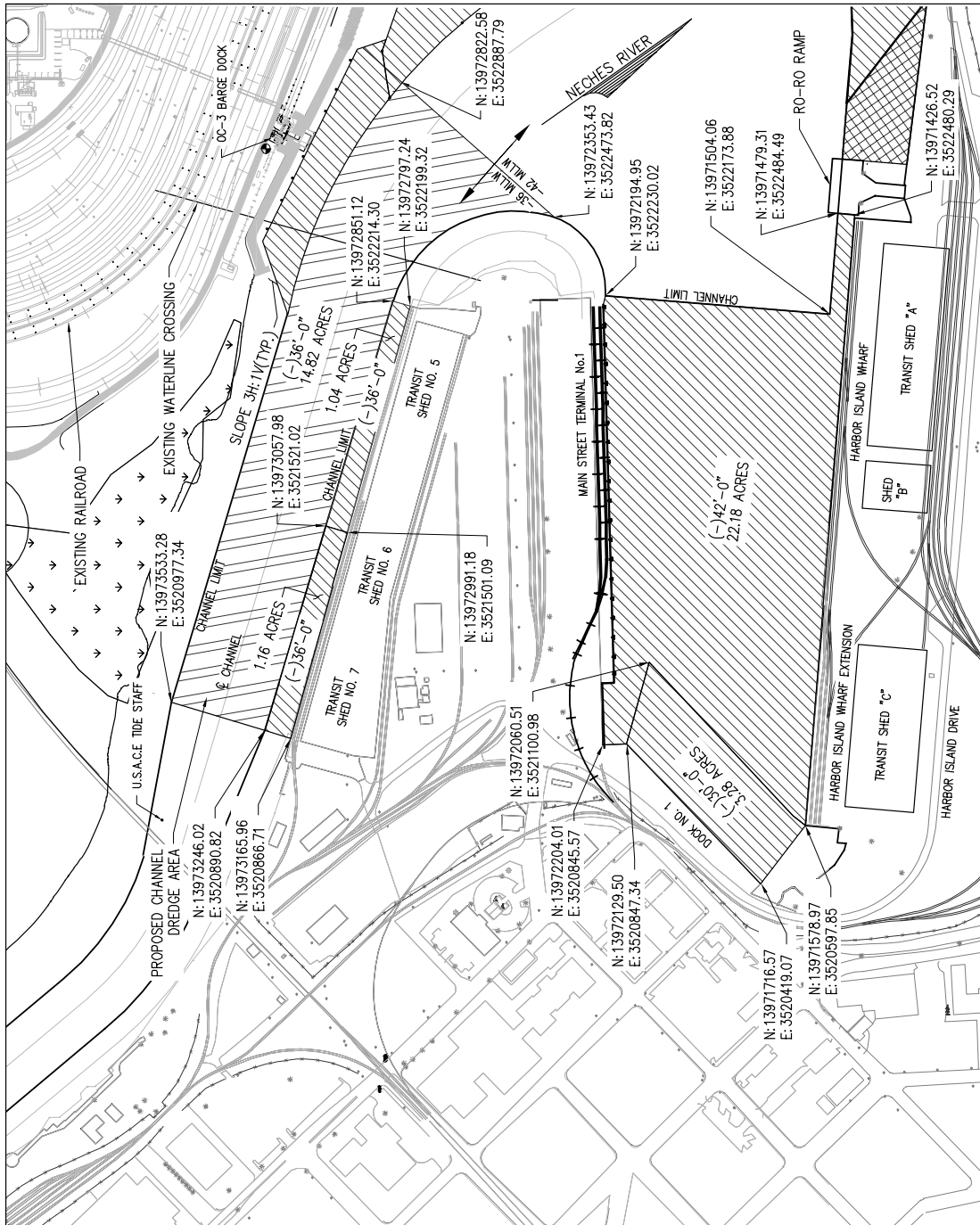
11082-CP05

LANIER & ASSOCIATES
CONSULTING ENGINEERS
INCORPORATED
FIRM F-2981
NEW ORLEANS, LA · BEAUMONT, TX

BEAUMONT **PORT OF BEAUMONT** TEXAS

MAINTENANCE DREDGING
SWG-1997-01754
OVERALL DREDGE PLAN

DATE OCT '19
DESIGN CSG
DRAWN ADG
CHECK DLC
CONTRACT 11082
SHEET No.
5 OF 8

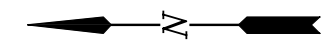
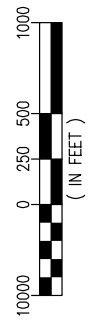


NOTES:

WEST DREDGE PLAN

SCALE: 1" = 1000'

1. HORIZONTAL DATUM REFERENCED TO TEXAS STATE PLANE (SOUTH CENTRAL) NAD 83.
2. ALL ELEVATIONS ARE EXPRESSED IN FEET AND TENTHS AND ARE REFERENCED TO MEAN LOWER LOW TIDE DATUM (MLLW).



LAT: 30°04'41"N
LONG: 94°04'45"W

	SWAMP
	PREVIOUSLY AUTHORIZED DREDGE AREA
	PROPOSED DREDGE AREA
	PROPOSED CHANNEL DREDGE AREA

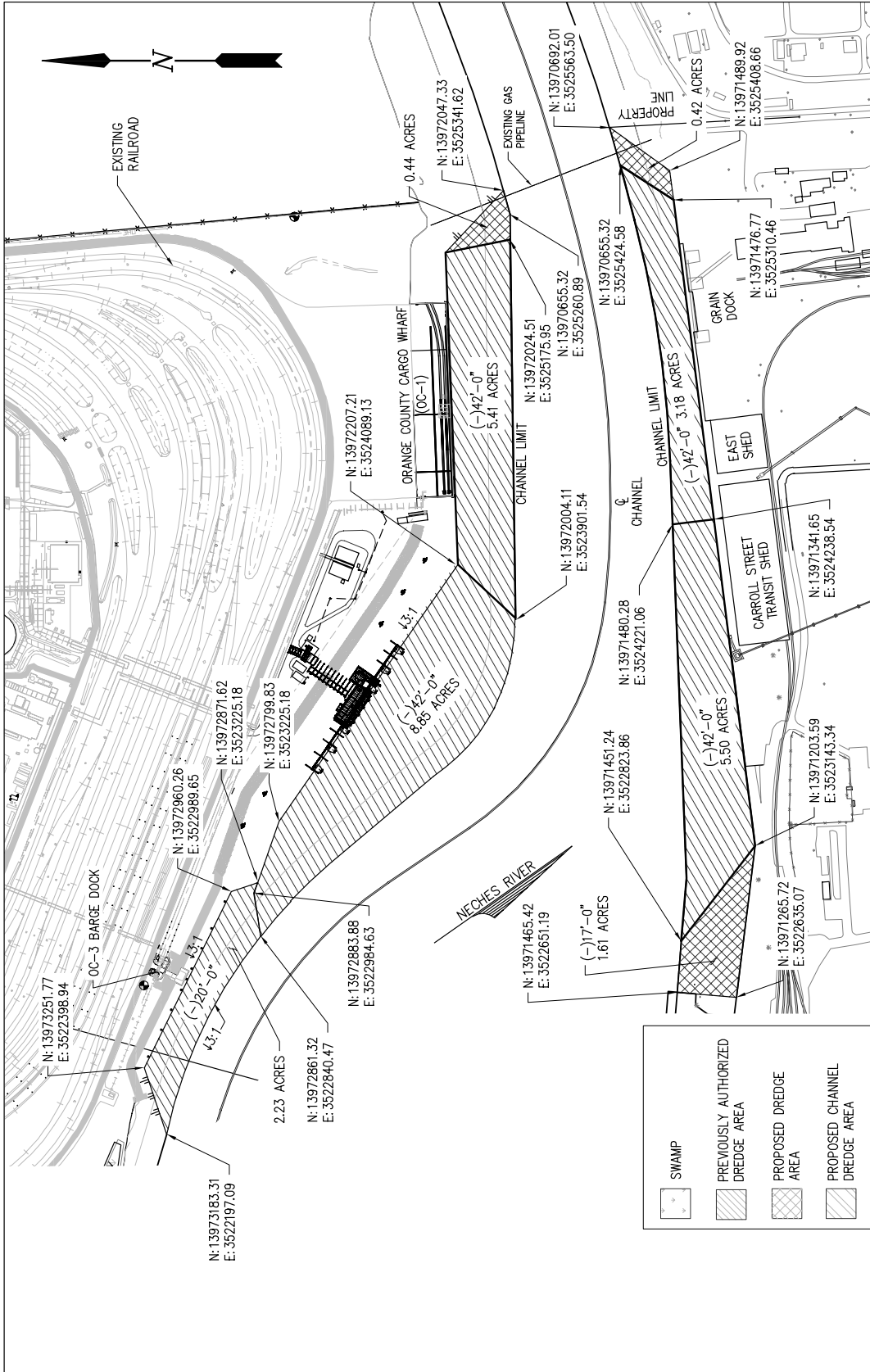
11082-CP06

LANIER & ASSOCIATES
CONSULTING ENGINEERS
INCORPORATED
FIRM F-2981
NEW ORLEANS, LA · BEAUMONT, TX

BEAUMONT **PORT OF BEAUMONT** TEXAS

MAINTENANCE DREDGING
SWG-1997-01754
WEST DREDGE PLAN

DATE	OCT '19
DESIGN	CSG
DRAWN	ADG
CHECK	DLC
CONTRACT	11082
SHEET No.	6 OF 8



NOTES:

1. HORIZONTAL DATUM REFERENCED TO TEXAS STATE PLANE (SOUTH CENTRAL) NAD 83.
2. ALL ELEVATIONS ARE EXPRESSED IN FEET AND TENTHS AND ARE REFERENCED TO MEAN LOWER LOW TIDE DATUM (MLLW).

EAST DREDGE PLAN

SCALE: 1" = 250'



11082-CP07

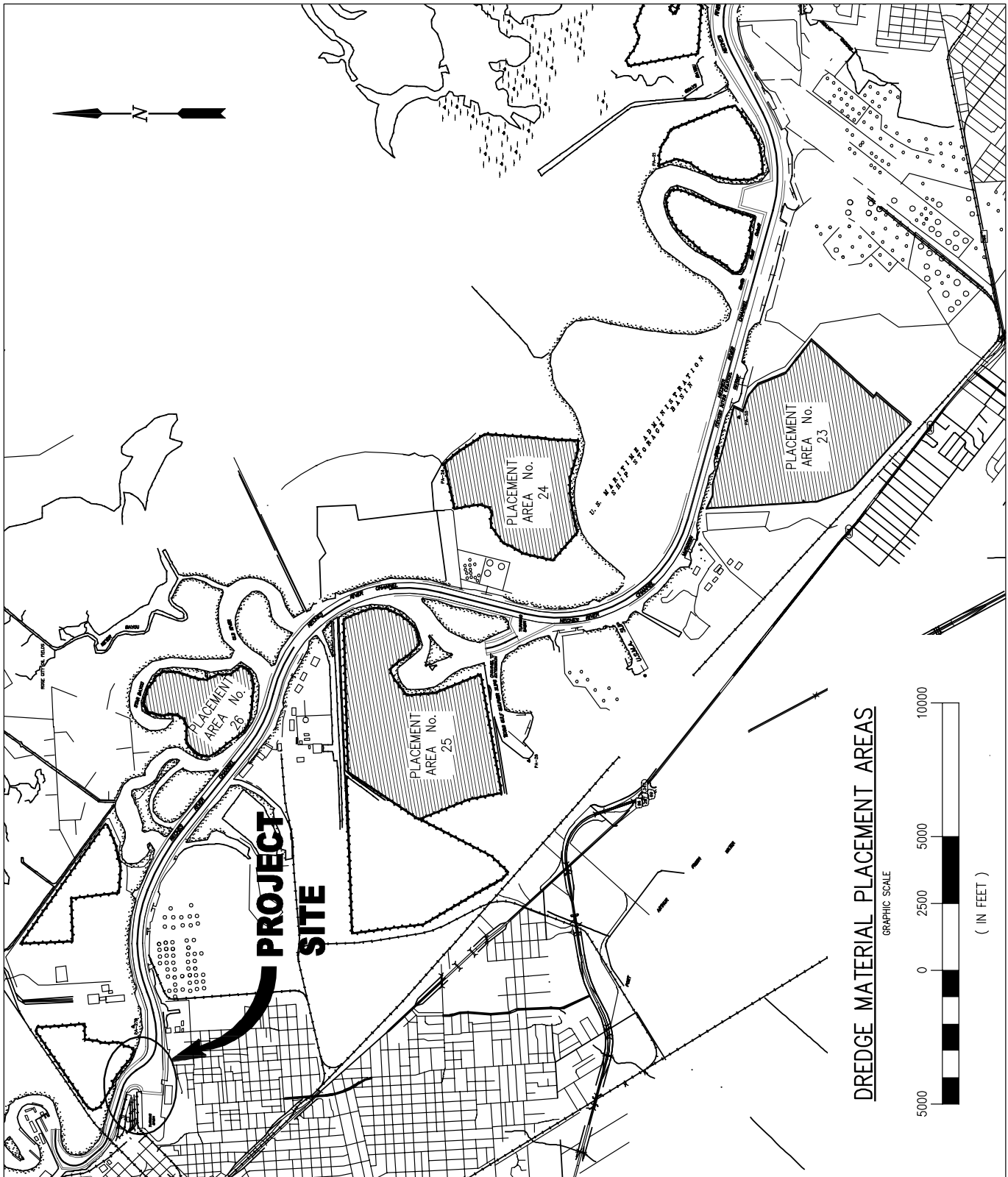
DATE	OCT '19
DESIGN	CSG
DRAWN	ADG
CHECK	DLC
CONTRACT	11082
SHEET No.	7 OF 8

LANIER & ASSOCIATES
CONSULTING ENGINEERS
INCORPORATED
FIRM F-2981
NEW ORLEANS, LA · BEAUMONT, TX

PORT OF BEAUMONT
MAINTENANCE DREDGING
SWG-1997-01754
EAST DREDGE PLAN

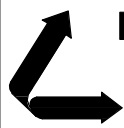
BEAUMONT

TEXAS



LAT: 30°04'41"N
LONG: 94°04'45"W

11082-CP8



LANIER & ASSOCIATES
CONSULTING ENGINEERS
INCORPORATED
FIRM F-2981
NEW ORLEANS, LA · BEAUMONT, TX

BEAUMONT **PORT OF BEAUMONT** TEXAS

MAINTENANCE DREDGING
SWG-1997-01754
DREDGE PLACEMENT AREAS

DATE OCT '19
DESIGN CSG
DRAWN ADG
CHECK DLC
CONTRACT 11082
SHEET No.

8 OF 8