

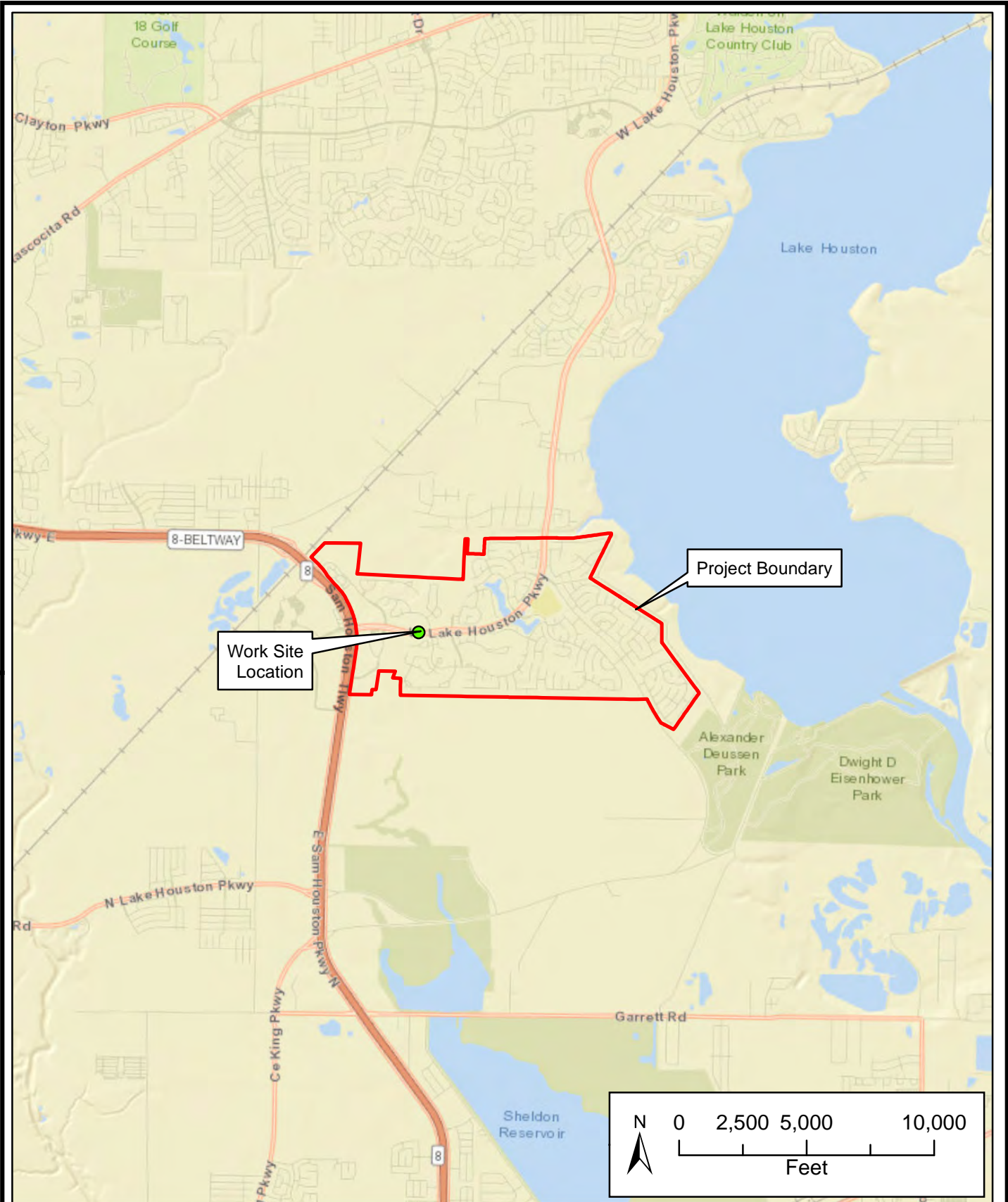
SITE VICINITY MAP

Project #: 11491
 For: McDonough Engineering Corporation
 Location: W Lake Houston Prky - Summerwood
Harris County, Texas

REVISIONS

BERG•OLIVER ASSOCIATES, INC.
 ENVIRONMENTAL SCIENCE & LAND USE CONSULTANTS
 14701 ST. MARY'S LANE, SUITE 400
 HOUSTON, TEXAS 77079 PHONE (281)589-0898 <http://www.bergoliver.com>





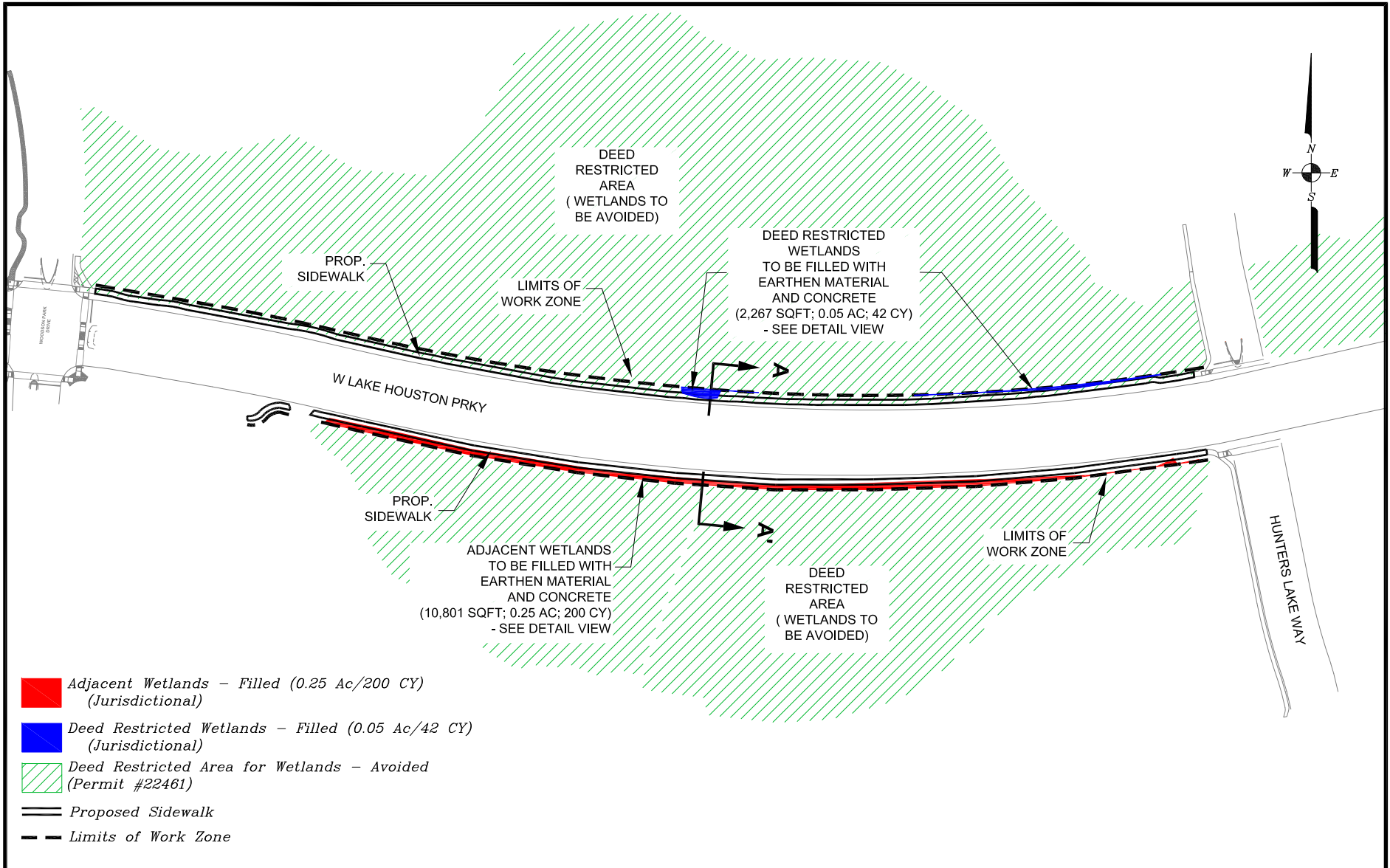
SITE LOCATION MAP

Project #: 11491
 For: McDonough Engineering Corporation
 Location: W Lake Houston Prky - Summerwood
Harris County, Texas

REVISIONS

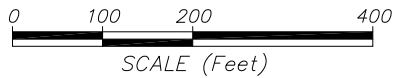
BERG•OLIVER ASSOCIATES, INC.
 ENVIRONMENTAL SCIENCE & LAND USE CONSULTANTS
 14701 ST. MARY'S LANE, SUITE 400
 HOUSTON, TEXAS 77079 PHONE (281)589-0898 <http://www.bergoliver.com>





- Adjacent Wetlands – Filled (0.25 Ac/200 CY)**
(Jurisdictional)
- Deed Restricted Wetlands – Filled (0.05 Ac/42 CY)**
(Jurisdictional)
- Deed Restricted Area for Wetlands – Avoided**
(Permit #22461)
- Proposed Sidewalk**
- Limits of Work Zone**

**PROPOSED SIDEWALK
 PLAN VIEW**

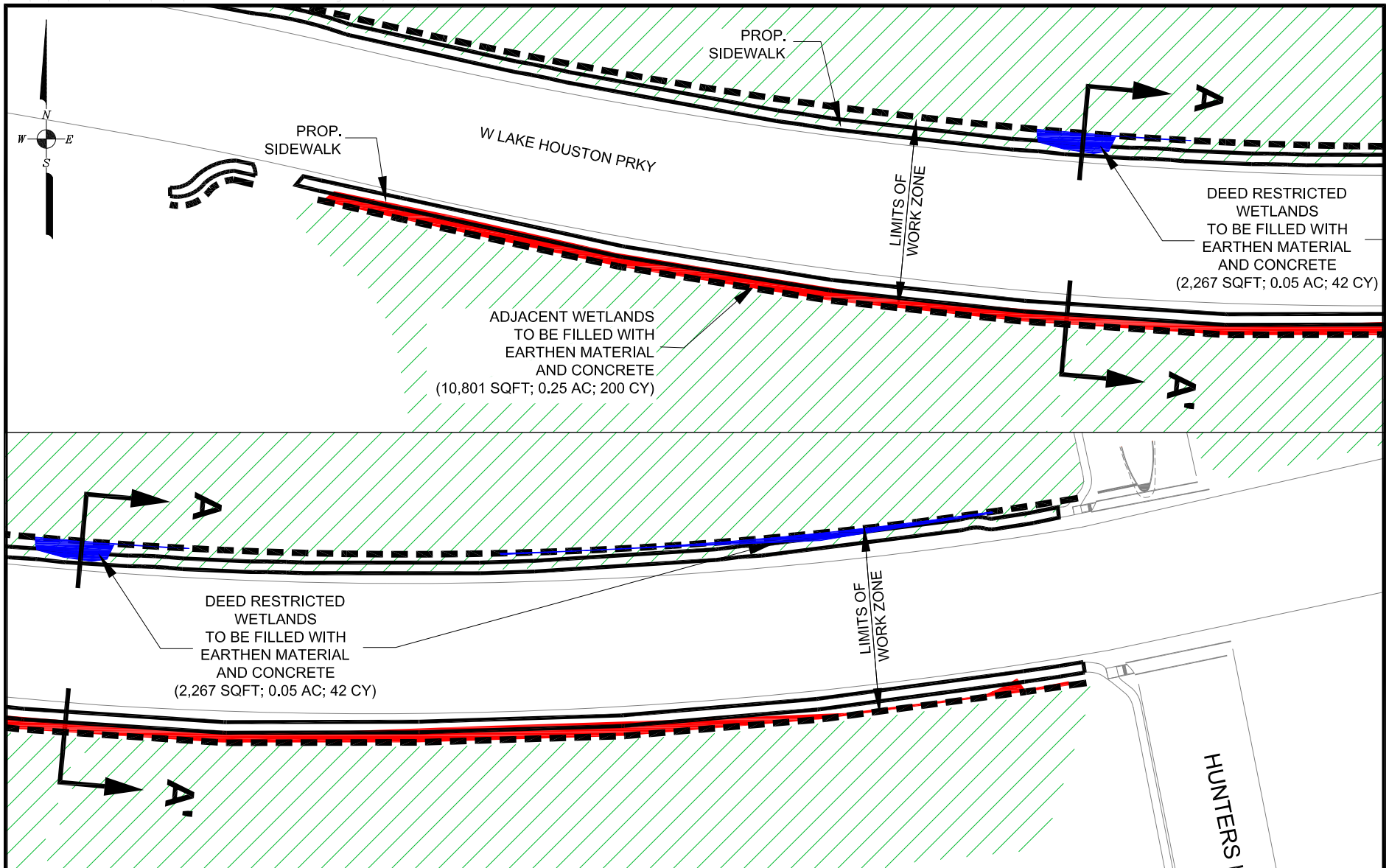


PROJECT #: 11491
 FOR: McDonough Engineering Corporation
 LOCATION: W Lake Houston Parkway – Summerwood
Harris County, Texas

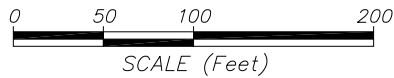
REVISIONS:
Feb. 12, 2020 by M. Baker
April 15, 2020 by M. Baker
April 24, 2020 by M. Baker

BERG • OLIVER ASSOCIATES, INC.
 ENVIRONMENTAL SCIENCE &
 LAND USE CONSULTANTS
 14701 ST. MARY'S LANE, SUITE 400 HOUSTON, TX 77079
 PHONE (281) 589-0698 <http://www.bergoliver.com>





**PROPOSED SIDEWALK
 DETAIL VIEW**

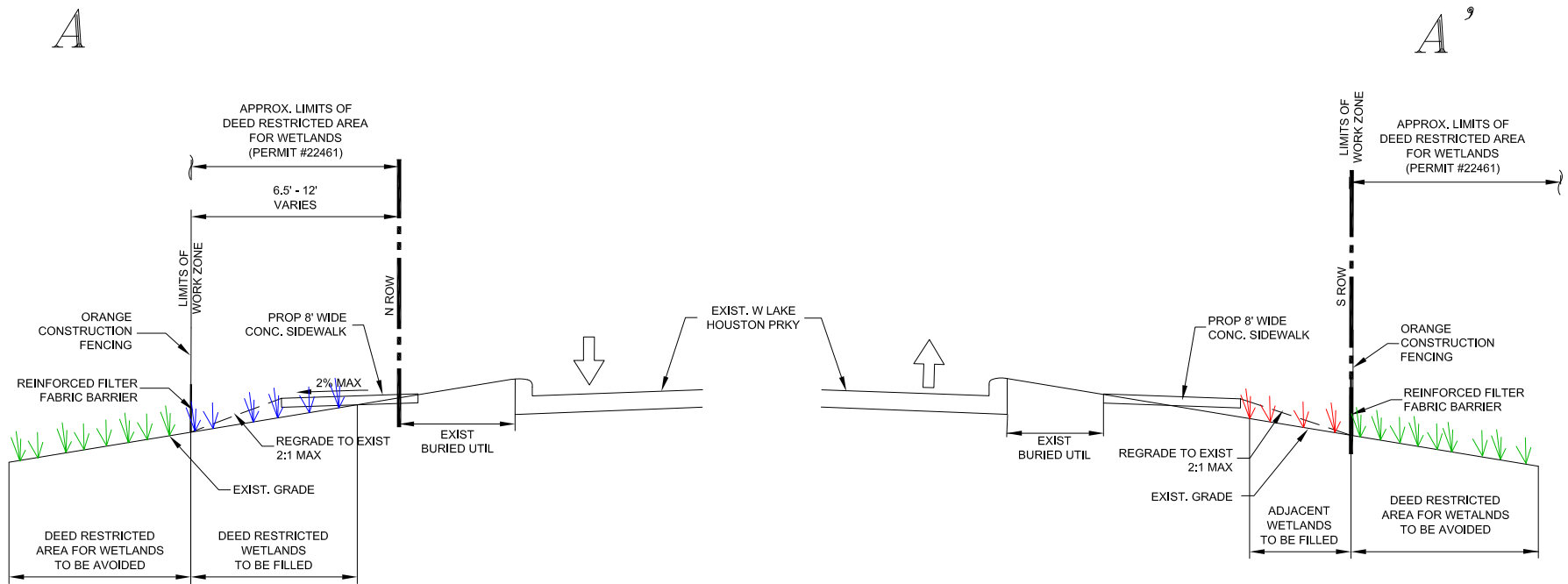


PROJECT #: 11491
 FOR: McDonough Engineering Corporation
 LOCATION: W Lake Houston Parkway - Summerwood
Harris County, Texas

REVISIONS:
 Feb. 12, 2020 by M. Baker
 April 15, 2020 by M. Baker
 April 24, 2020 by M. Baker

BERG & OLIVER ASSOCIATES, INC.
 ENVIRONMENTAL SCIENCE &
 LAND USE CONSULTANTS
 14701 ST. MARY'S LANE, SUITE 400 HOUSTON, TX 77079
 PHONE (281) 589-0698 <http://www.bergoliver.com>





**PROPOSED SIDEWALK
 TYPICAL CROSS SECTION A-A'**

NOT TO SCALE

PROJECT #: 11491
 FOR: McDonough Engineering Corporation
 LOCATION: W Lake Houston Parkway - Summerwood
Harris County, Texas

REVISIONS:
Feb. 12, 2020 by M. Baker
April 15, 2020 by M. Baker
April 24, 2020 by M. Baker

BERG & OLIVER ASSOCIATES, INC.
 ENVIRONMENTAL SCIENCE &
 LAND USE CONSULTANTS
 14701 ST. MARY'S LANE, SUITE 400 HOUSTON, TX 77079
 PHONE (281) 589-0698 <http://www.bergoliver.com>

