

SWG-2024-00119

North Padre Island
Water Circulation Improvements

Sheet 1 of 9

27.62282° N
97.23319° W

Aquarius Aqueduct

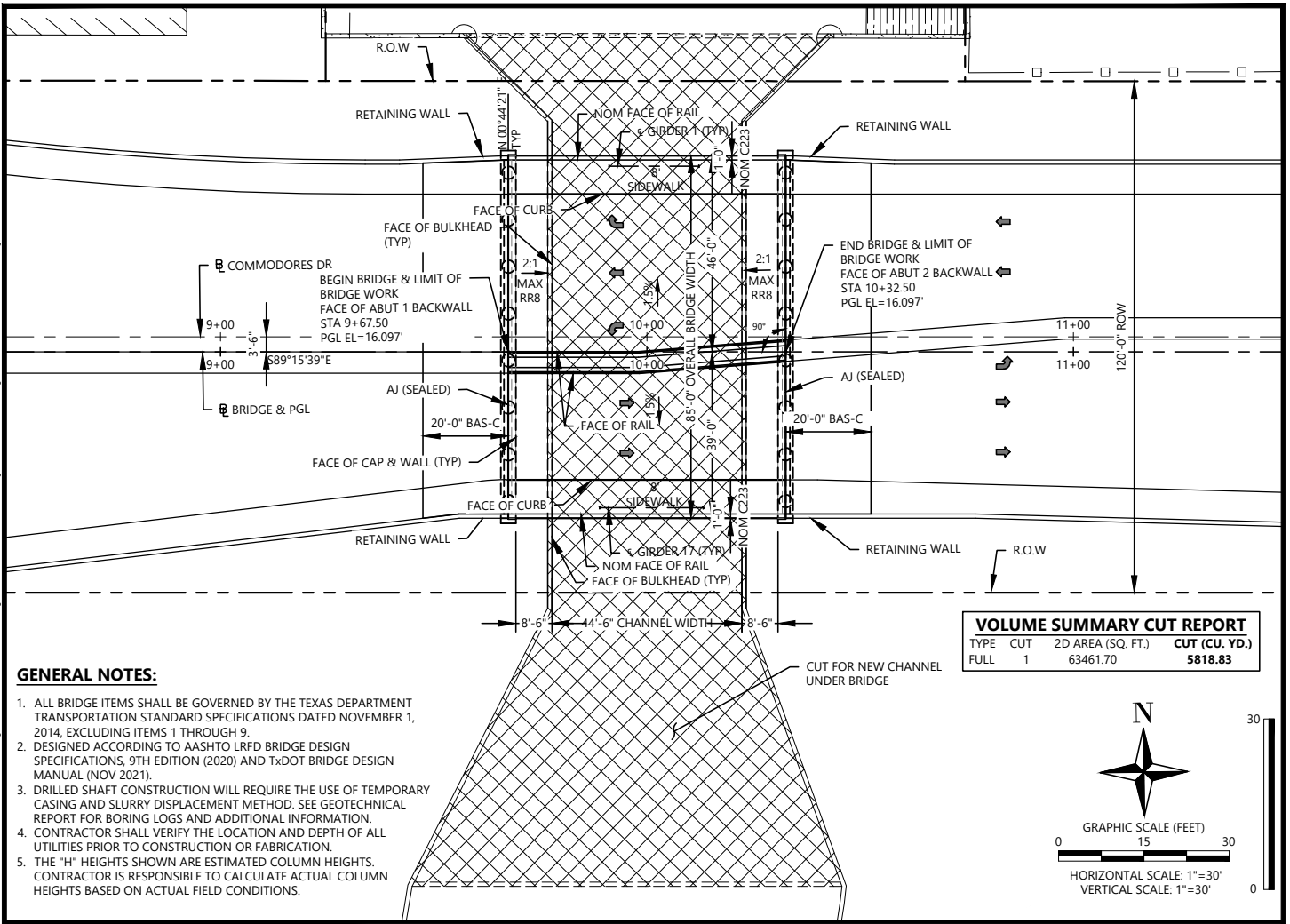
27.61728° N
97.22931° W

Commodore's Drive Bridge
27.61818° N
97.22428° W

Crown Royal Culvert
27.61123° N
97.22915° W



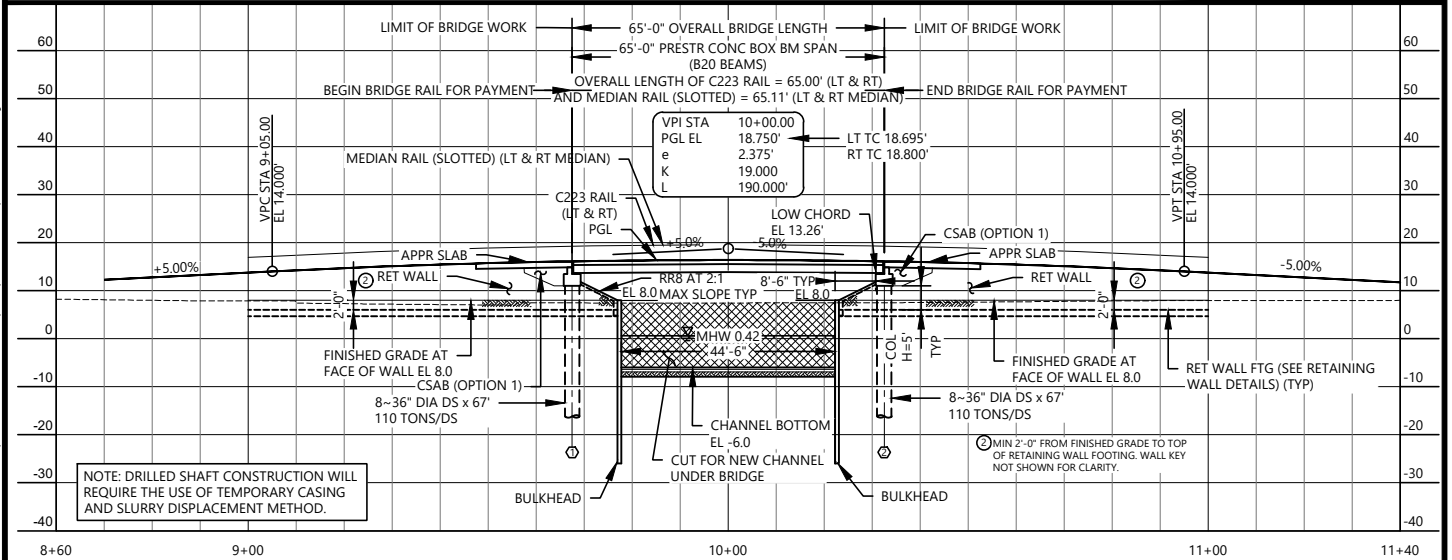
L:\ACC NAME: R:\CLIENTS\DIAMOND BEACH HOLDINGS, LLC - 986\21143 Waves Resort\CAD\Environmental\BRIDGE PNP.dwg mfacon Tue, Jan 09 2024 @ 10:38 am X-PROP CB.dwg X-S PROP CB.dwg X-Exist CB.dwg X-TLBLK_8.5 x 11.dwg




GENERAL NOTES:

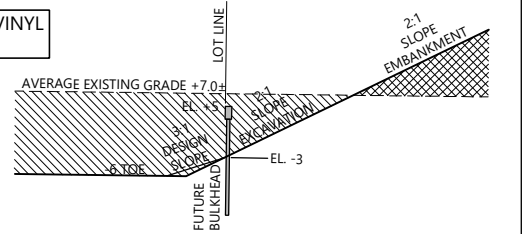
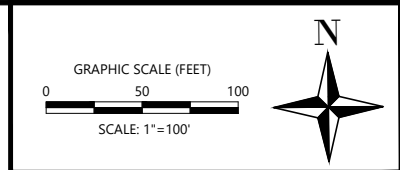
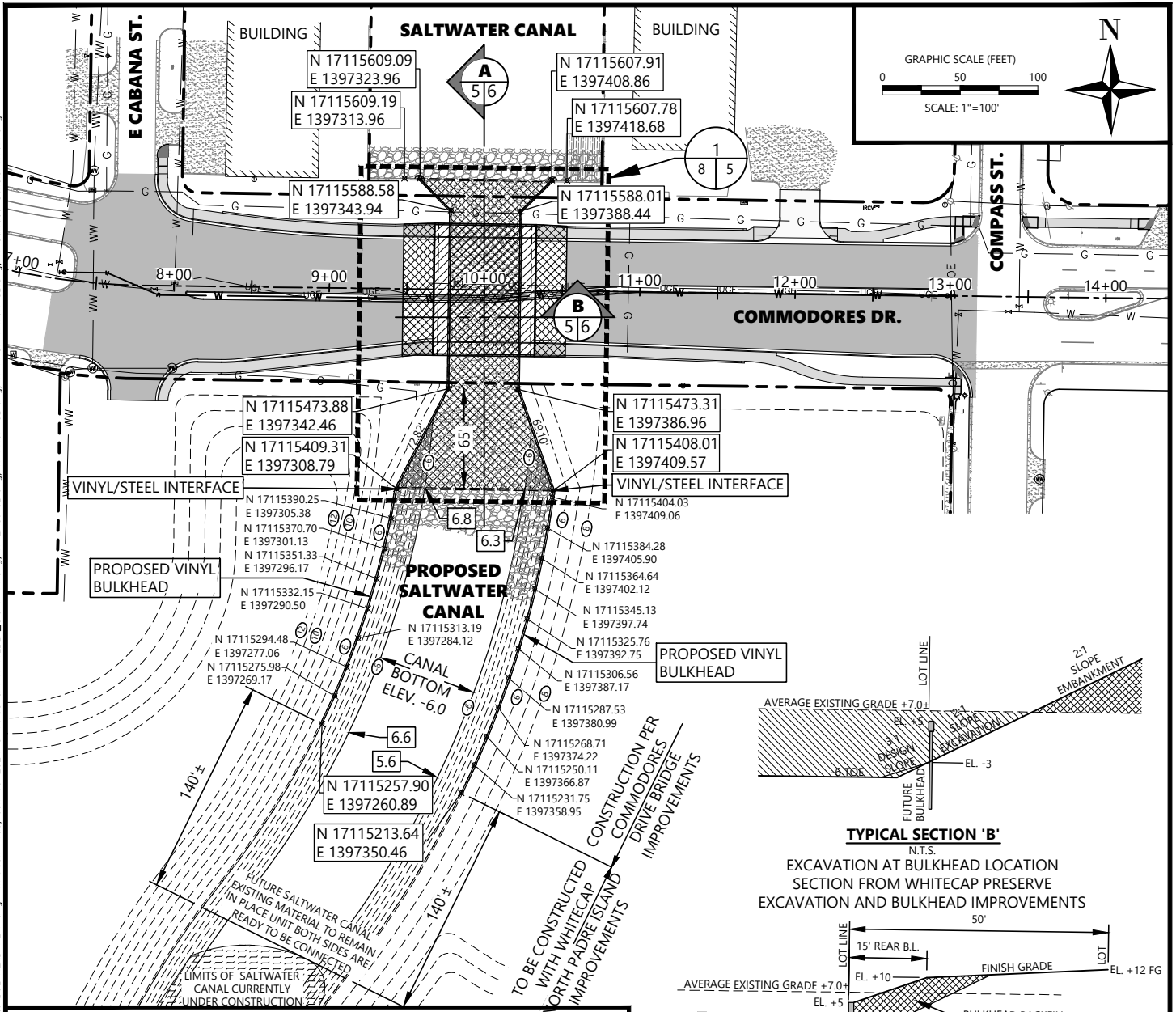
1. ALL BRIDGE ITEMS SHALL BE GOVERNED BY THE TEXAS DEPARTMENT TRANSPORTATION STANDARD SPECIFICATIONS DATED NOVEMBER 1, 2014, EXCLUDING ITEMS 1 THROUGH 9.
2. DESIGNED ACCORDING TO AASHTO LRFD BRIDGE DESIGN SPECIFICATIONS, 9TH EDITION (2020) AND TxDOT BRIDGE DESIGN MANUAL (NOV 2021).
3. DRILLED SHAFT CONSTRUCTION WILL REQUIRE THE USE OF TEMPORARY CASING AND SLURRY DISPLACEMENT METHOD. SEE GEOTECHNICAL REPORT FOR BORING LOGS AND ADDITIONAL INFORMATION.
4. CONTRACTOR SHALL VERIFY THE LOCATION AND DEPTH OF ALL UTILITIES PRIOR TO CONSTRUCTION OR FABRICATION.
5. THE "H" HEIGHTS SHOWN ARE ESTIMATED COLUMN HEIGHTS. CONTRACTOR IS RESPONSIBLE TO CALCULATE ACTUAL COLUMN HEIGHTS BASED ON ACTUAL FIELD CONDITIONS.

PLAN

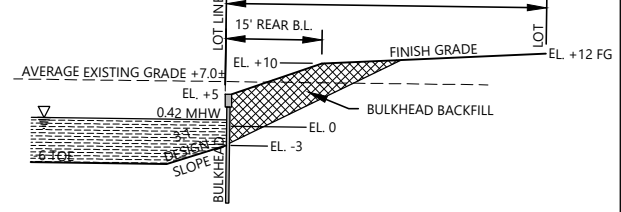


PROFILE

		<p>COMMODORES DRIVE BRIDGE CORPUS CHRISTI, TEXAS</p>	SCALE: AS NOTED DRAWN BY: MF APPROVED BY: JG DATE: 1/9/2024
		<p>PROPOSED BRIDGE LAYOUT PLAN & PROFILE</p>	JOB NO. C986-21143 SHEET NO. 4

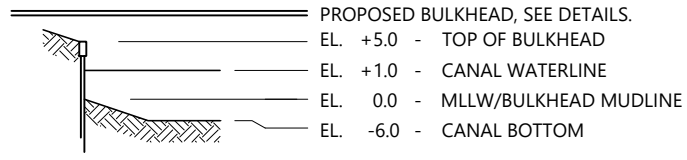


TYPICAL SECTION 'B'
N.T.S.
EXCAVATION AT BULKHEAD LOCATION
SECTION FROM WHITECAP PRESERVE
EXCAVATION AND BULKHEAD IMPROVEMENTS



TYPICAL SECTION 'C'
N.T.S.
BACKFILL AT BULKHEAD LOCATION
SECTION FROM WHITECAP PRESERVE
EXCAVATION AND BULKHEAD IMPROVEMENTS

- NOTES:**
(REFERENCING WHITECAP PRESERVE EXCAVATION AND BULKHEAD IMPROVEMENTS)
1. CONTOURS DENOTE THE EXCAVATION AND EMBANKMENT REQUIRED FOR ULTIMATE BULKHEAD INSTALLATION.
 2. SEE TYPICAL SECTIONS FOR PROGRESSIVE CONFIGURATIONS OF EXCAVATION, BULKHEAD INSTALLATION, AND EMBANKMENT.
 3. 6.6 DENOTES EXISTING GROUND ELEVATION AT KEY LOCATIONS ALONG PROPOSED CANAL BOTTOM.



NORTHING/EASTING OF PROPOSED FEATURE AT P.I., P.C., P.T., P.R.C., P.C.C. NORTHING/EASTING OF PROPOSED FEATURE AT INTERMEDIATE LOCATIONS

N 17,115,555.55
E 1,395,555.55 N 17,115,555.55
E 1,395,555.55

ALL DIMENSIONS SHOWN ARE FROM P.I., P.C., P.T., P.R.C., P.C.C.

LJA
ENVIRONMENTAL

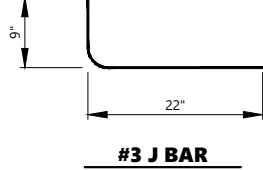
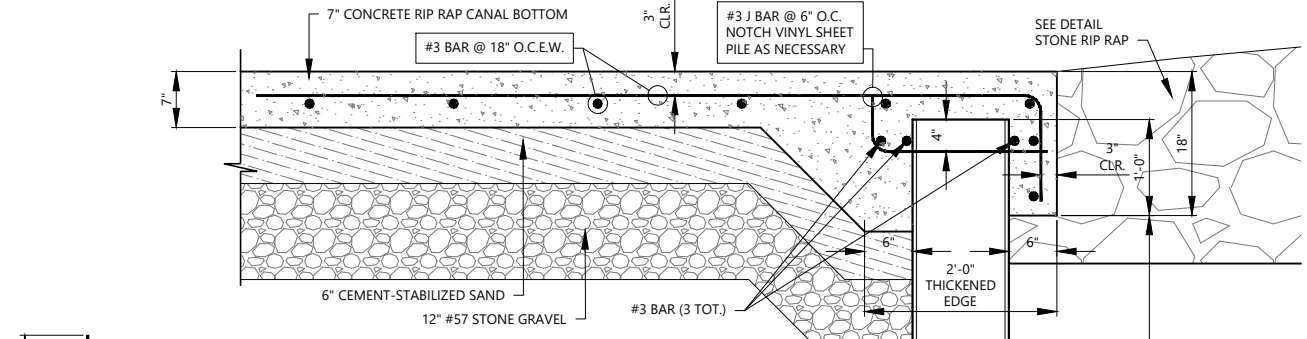
LJA
ENGINEERING
TBE FIRM REG. NO. F-1386

COMMODORES DRIVE BRIDGE
CORPUS CHRISTI, TEXAS

PROPOSED CANAL & BULKHEAD PLAN

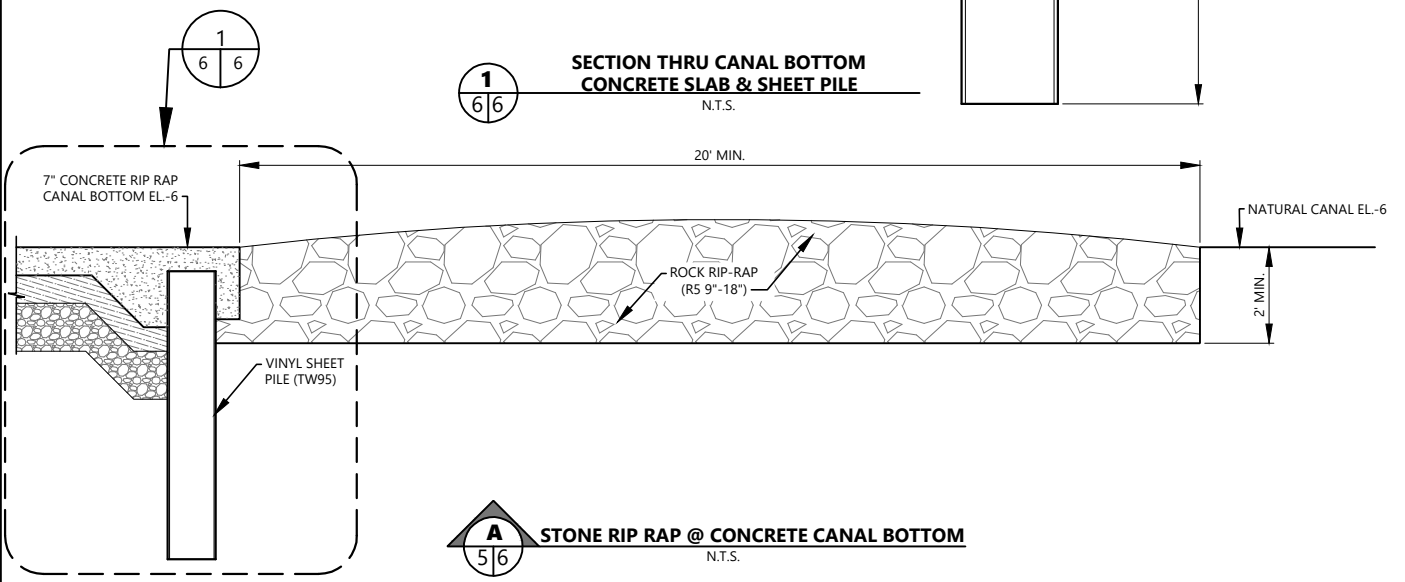
SCALE:	AS NOTED
DRAWN BY:	MF
APPROVED BY:	JG
DATE:	1/9/2024
JOB NO.	C986-21143
SHEET NO.	5

L:\ACC NAME: R:\CLIENTS\DIAMOND BEACH HOLDINGS, LLC - 986\21143 Waves Resort\CAD\Environmental\CANAL & BULKHEAD PLAN.dwg - mfaicon Tue, Jan 09 2024 @ 10:38 am X-TL:BLK_8.5 x 11.dwg; X-PROP_CB.dwg; X-PROP_CB.dwg; X-PROP_HATCH_CB.dwg; X-Surface Conals-R16.4.dwg

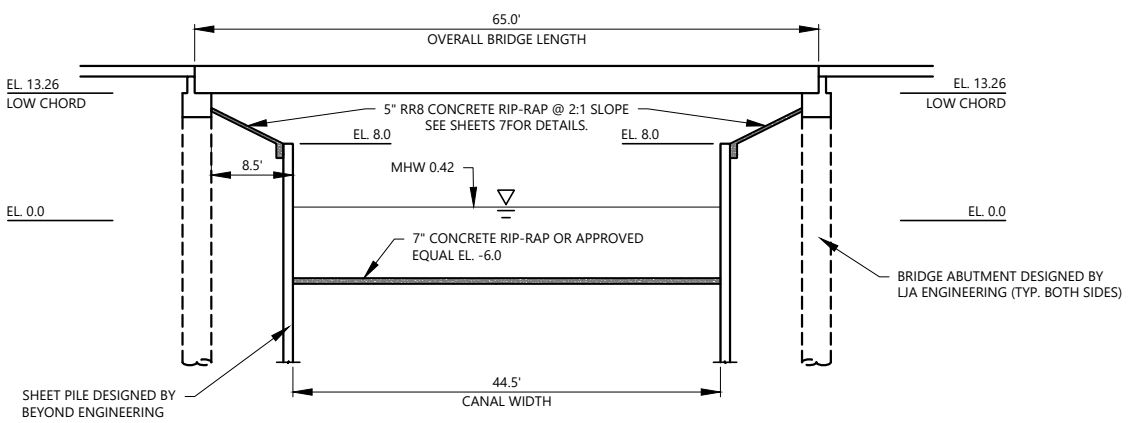


- CONCRETE NOTES:**
1. PROVIDE CLASS "B" CONCRETE ($f'_c=2,000$ psi)
 2. PROVIDE #3 REINFORCING BARS AT 18" O.C.E.W. USE LAP SPLICES OF A MINIMUM OF 6 INCHES, MEASURED FROM THE ENDS OF REINFORCING BARS.
 3. ALL REINFORCING STEEL TO BE ZINC GALVANIZED PER ASTM A767.
 4. ZYPEX CONCENTRATE SEALANT, OR APPROVED EQUAL, SHALL BE USED WHERE CONCRETE CANAL BOTTOM ABUTS STEEL OR VINYL SHEET PILE.
 5. CONCRETE CANAL BOTTOM SHALL BE TIED TO STEEL OR VINYL SHEET PILE AS DIRECTED IN CONSTRUCTION DETAILS.

SECTION THRU CANAL BOTTOM CONCRETE SLAB & SHEET PILE
N.T.S.



STONE RIP RAP @ CONCRETE CANAL BOTTOM
N.T.S.



SECTION THRU CANAL AT PROPOSED BRIDGE
N.T.S.

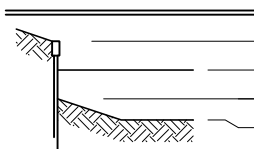
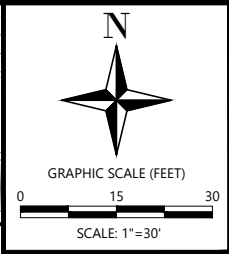
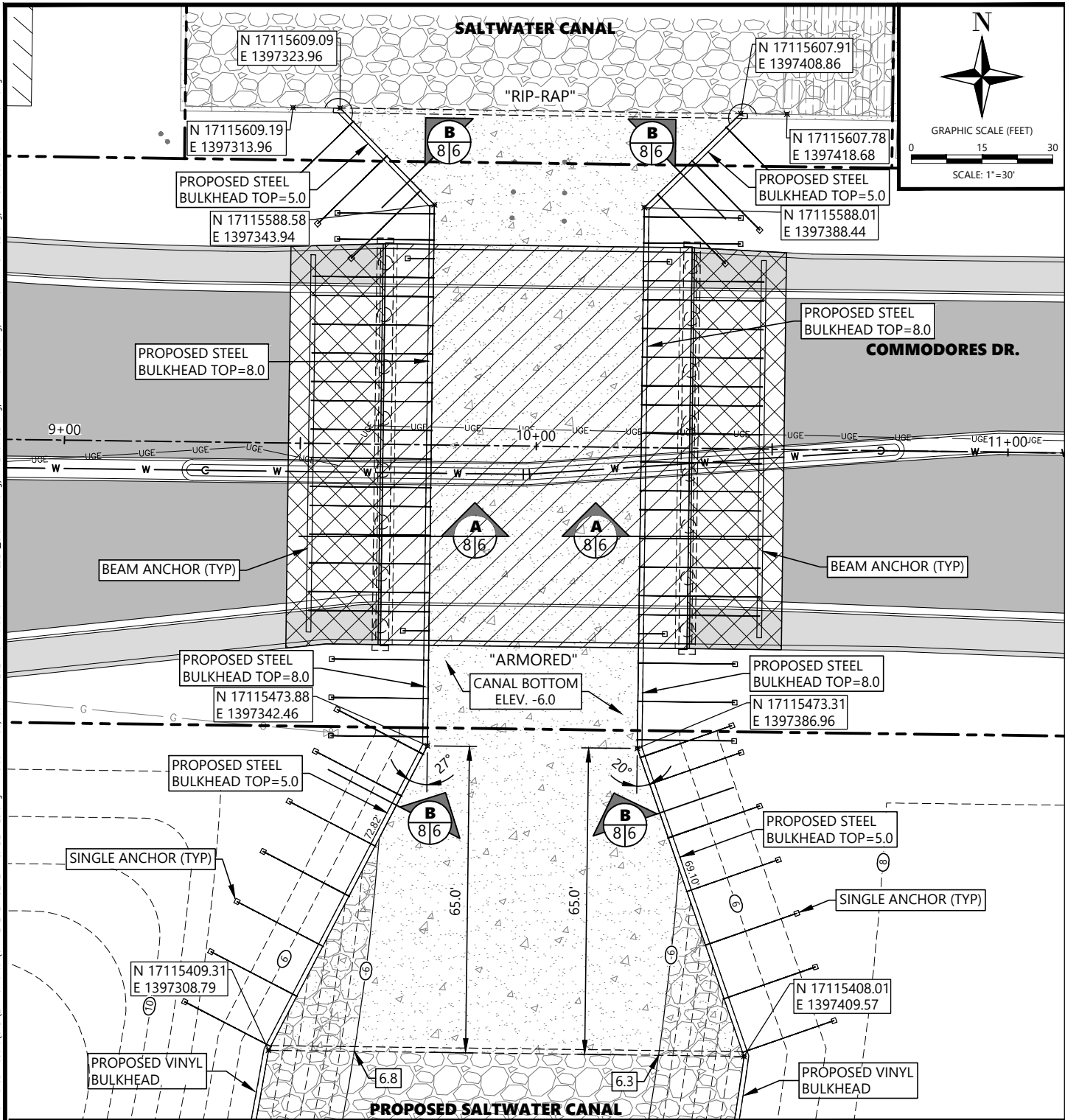


COMMODORES DRIVE BRIDGE
CORPUS CHRISTI, TEXAS

CANAL SECTION VIEWS

SCALE:	AS NOTED
DRAWN BY:	MF
APPROVED BY:	JG
DATE:	1/9/2024
JOB NO.	C986-21143
SHEET NO.	6

L:\CC NAME: R:\CLIENTS\DIAMOND BEACH HOLDINGS, LLC - 986\21143 Waves Resort\CAD\Environmental\CANAL ENLARGEMENT & DETAILS.dwg mrfalcon Tue, Jan 09, 2024 @ 10:38 am X-TTLBLK_8.5 x 11.dwg X-Exist CB.dwg X-PROP CB.dwg X-PROP CB.dwg X-HATCH CB.dwg X-Surface Canals-R16.4.dwg



PROPOSED BULKHEAD, SEE DETAILS.
 EL. +5.0 - TOP OF BULKHEAD
 EL. +1.0 - CANAL WATERLINE
 EL. 0.0 - MLLW/BULKHEAD MUDLINE
 EL. -6.0 - CANAL BOTTOM

NOTES:
 (REFERENCING WHITECAP PRESERVE EXCAVATION AND BULKHEAD IMPROVEMENTS)

1. CONTOURS DENOTE THE EXCAVATION AND EMBANKMENT REQUIRED FOR ULTIMATE BULKHEAD INSTALLATION.
 2. SEE TYPICAL SECTIONS FOR PROGRESSIVE CONFIGURATIONS OF EXCAVATION, BULKHEAD INSTALLATION, AND EMBANKMENT.

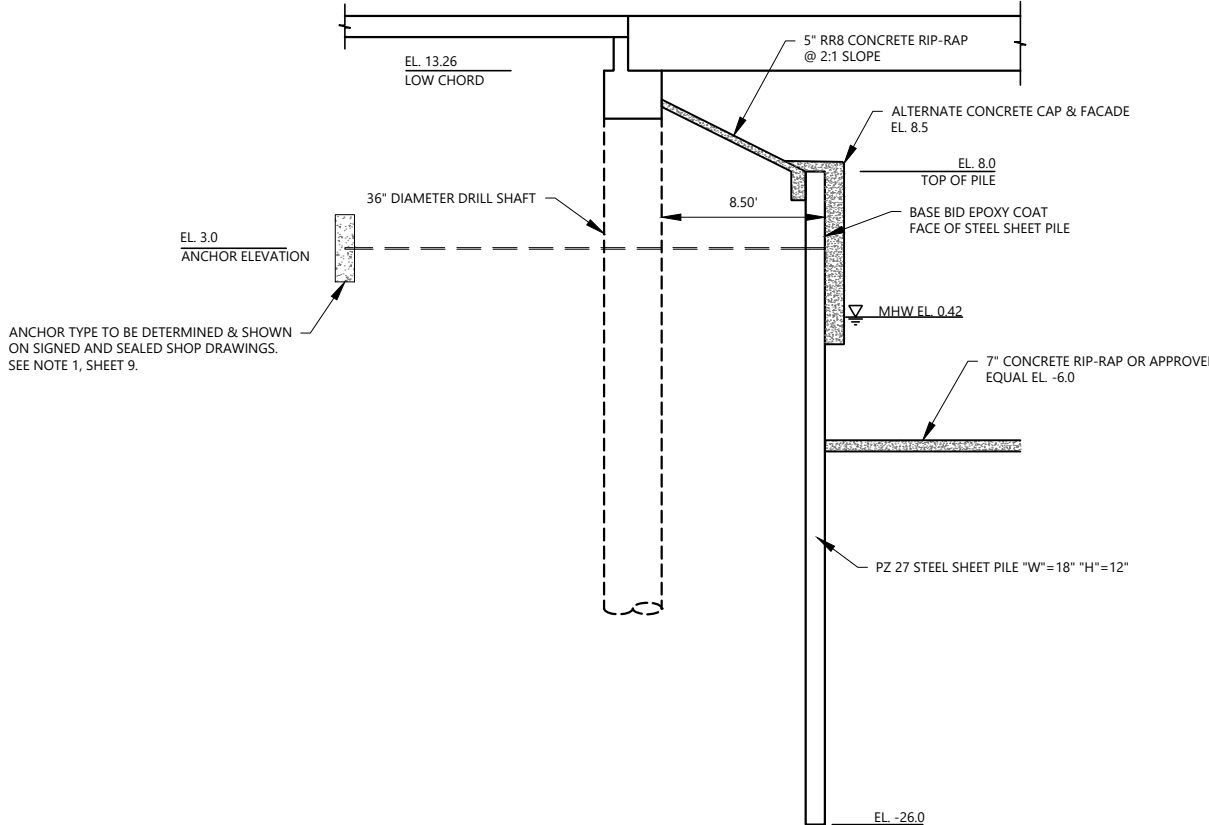
- NORTHING/EASTING OF PROPOSED FEATURE AT P.I., P.C., P.T., P.R.C., P.C.C.
- N 17,115,555.55
E 1,395,555.55

COMMODORES DRIVE BRIDGE
 CORPUS CHRISTI, TEXAS

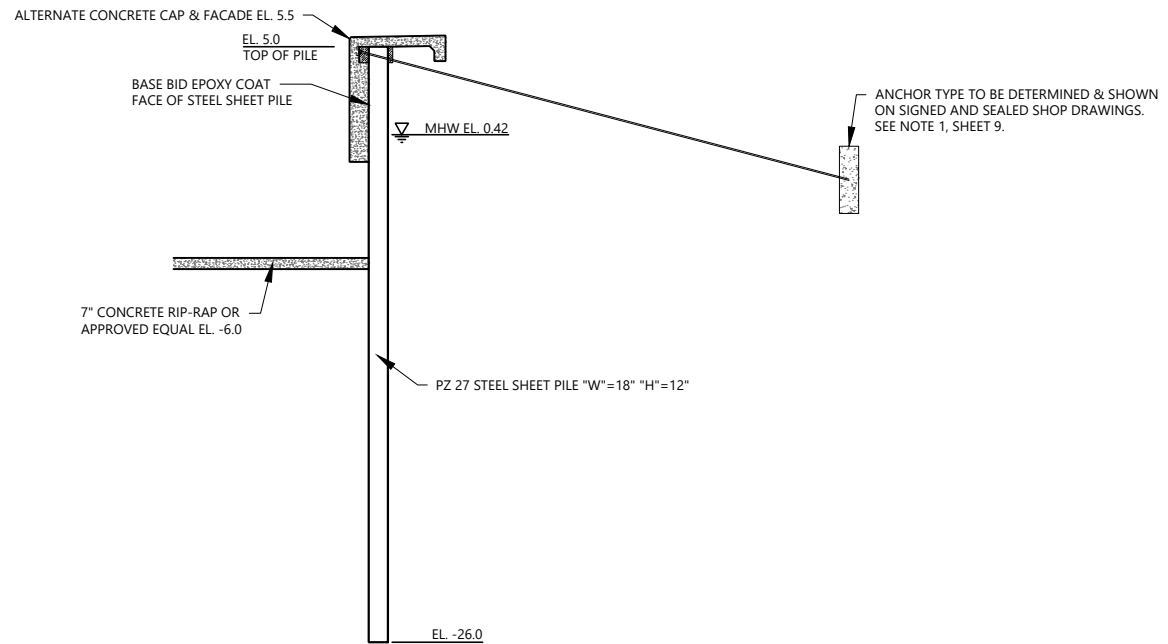
CANAL ENLARGEMENT

SCALE:	AS NOTED
DRAWN BY:	MF
APPROVED BY:	JG
DATE:	1/9/2024
JOB NO.	C986-21143
SHEET NO.	8

L:\ACC NAME: R:\CLIENTS\DIAMOND BEACH HOLDINGS, LLC - 986\21143 Waves Resort\CAD\Environmental\CANAL ENLARGEMENT & DETAILS.dwg mfaicon Tue, Jan 09 2024 @ 10:38 am X-TTLBLK_8.5 x 11.dwg X-Exist CB.dwg X-PROP CB.dwg X-PROP CB.dwg X-Surface Canals-R16.4.dwg



A
8 | 10
**STEEL SHEET PILE PZ 27
UNDER BRIDGE SECTION**
N.T.S.

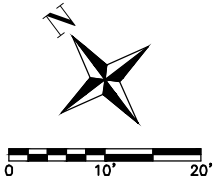


B
8 | 10
**STEEL SHEET PILE PZ 27
FLARE TRANSITION SECTION**
N.T.S.



COMMODORES DRIVE BRIDGE
 CORPUS CHRISTI, TEXAS
STEEL SHEET PILE DETAILS (2 OF 2)

SCALE:	AS NOTED
DRAWN BY:	MF
APPROVED BY:	JG
DATE:	1/9/2024
JOB NO.	C986-21143
SHEET NO.	10



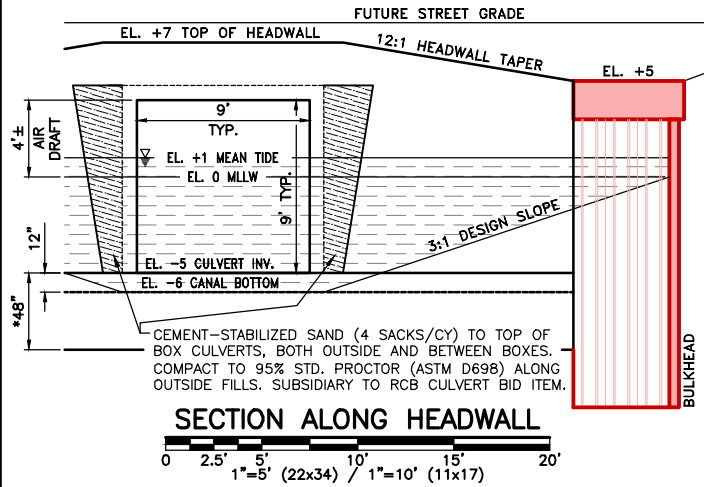
PROPOSED BULKHEAD
TOP = 5.0
MUD = 0.0

CANAL BOTTOM
ELEV. -5.0 (TYP)

PROPOSED BULKHEAD
TOP = 5.0
MUD = 0.0

PROPOSED CULVERT
HEADWALL, TXDOT PW-2

WESTBOUND



120 LF
PROPOSED 9x9 RCB

CROWN

ROYAL

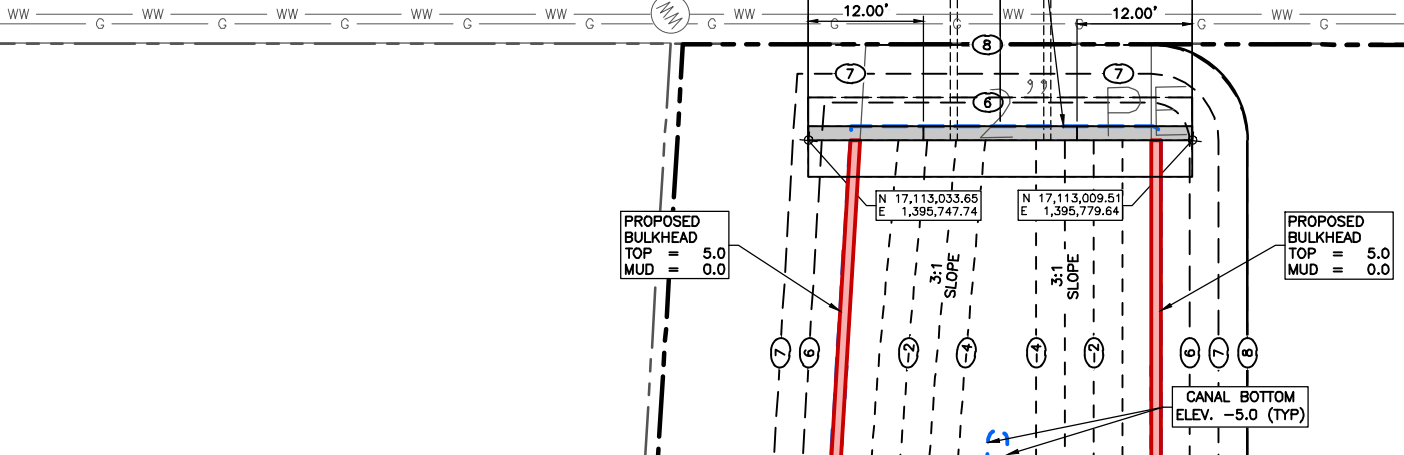
EASTBOUND

PROPOSED CULVERT
HEADWALL, TXDOT PW-2

PROPOSED BULKHEAD
TOP = 5.0
MUD = 0.0

PROPOSED BULKHEAD
TOP = 5.0
MUD = 0.0

CANAL BOTTOM
ELEV. -5.0 (TYP)



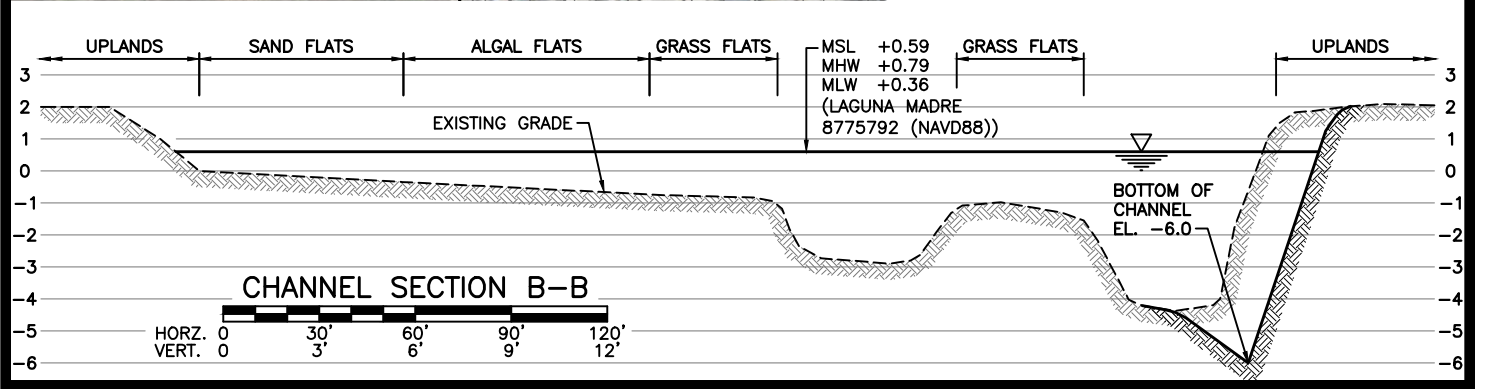
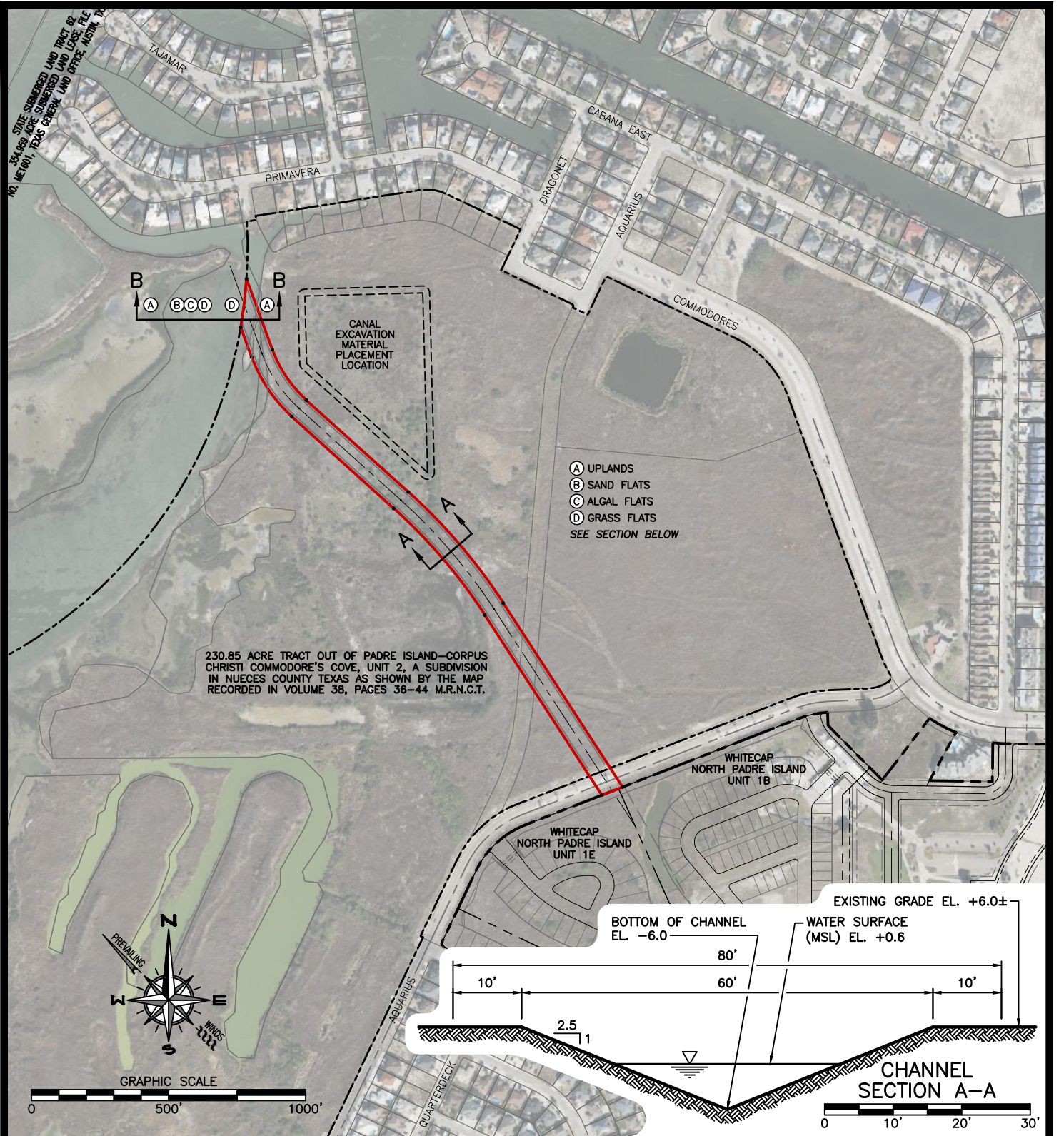
CROWN ROYAL CULVERT
CORPUS CHRISTI, TEXAS

CULVERT PLAN & SECTION

SCALE:	AS NOTED
DRAWN BY:	dp
APPROVED BY:	JG
DATE:	02.05.2023
JOB NO.	C986-21143
SHEET NO.	3

LJACC NAME: R:\CLIENTS\DIAMOND BEACH HOLDINGS, LLC - 986\21143 Waves Resort\CAD\Environmental\WhiskeyEnlarged.dwg dpatterson Mon, Feb 05 2024 @ 1:31 pm

LIACC NAME: R:\CLIENTS\DIAMOND BEACH HOLDINGS, LLC - 986\21143 Waves Resort\CAD\TIRZ Projects\TIRZ.2.08 AquariusAqueduct-Rev.CCove-Exhibit.dwg TAB: Vicinity dpatterson Mon, Oct 21 2024 @ 10:57 am



L:\CLIENTS\DIAMOND BEACH HOLDINGS, LLC - 986\21143 Waves Resort\CAD\TIRZ Projects\TIRZ.2.08 AquariusAqueduct-Rev.CCove-Exhibit.dwg TAB: Vicinity dpatterson Mon, Oct 21 2024 @ 10:57 am

