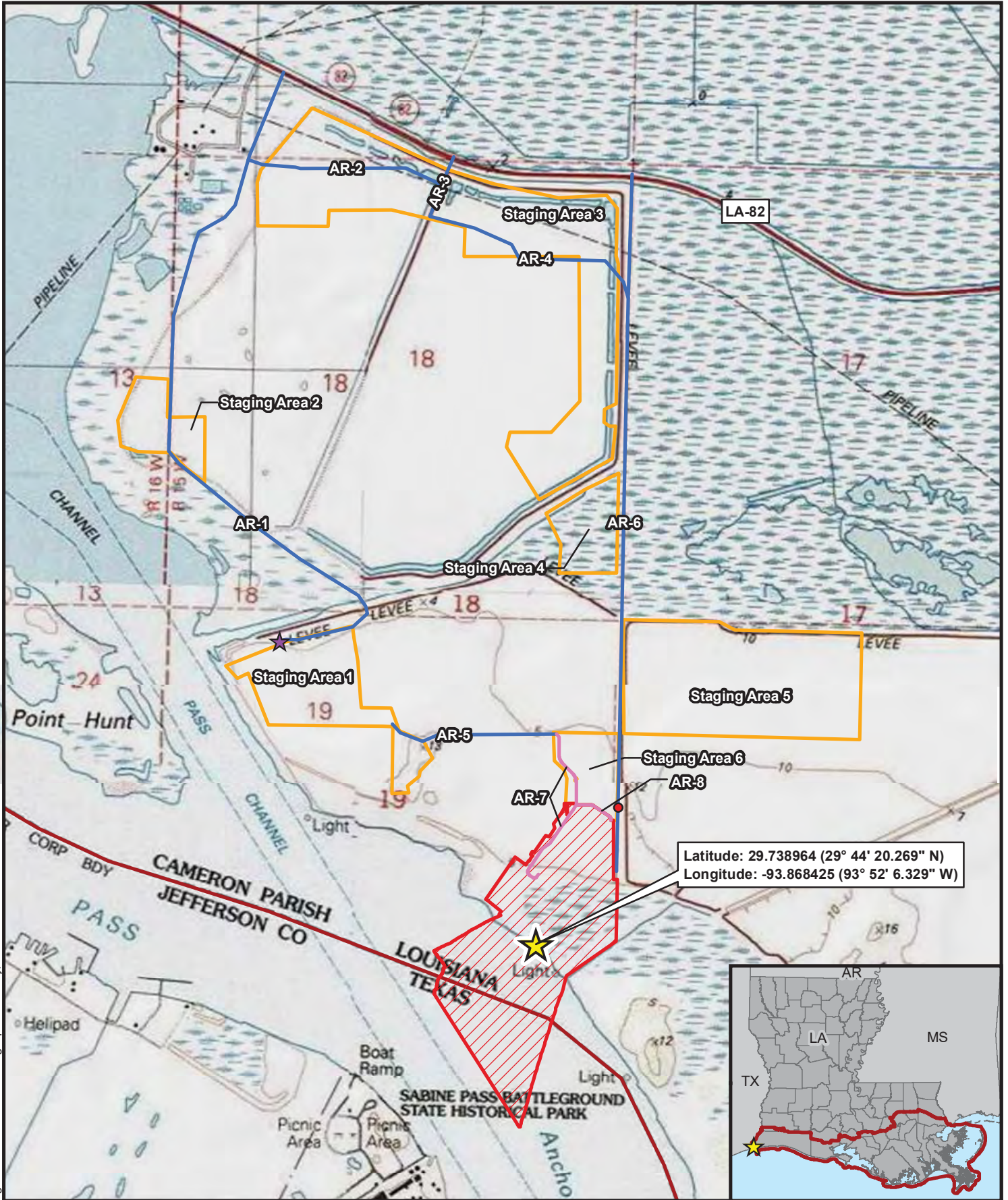


Path: Z:\Clients\ENS\Cheniere\104105\_SLN3RDBERTH\Studies\Geospatial\DataFiles\ArcDocs\JPA\SLN3RDBERTH\_JPA\_Topo.mxd kboatright 10/19/2018  
 COPYRIGHT © 2018 BURNS & McDONNELL ENGINEERING COMPANY, INC. Datum/Coordinate System: NAD 1983 StatePlane Louisiana South FIPS 1702 Feet  
 Service Layer Credits: Copyright © 2013 National Geographic Society. i-cubed



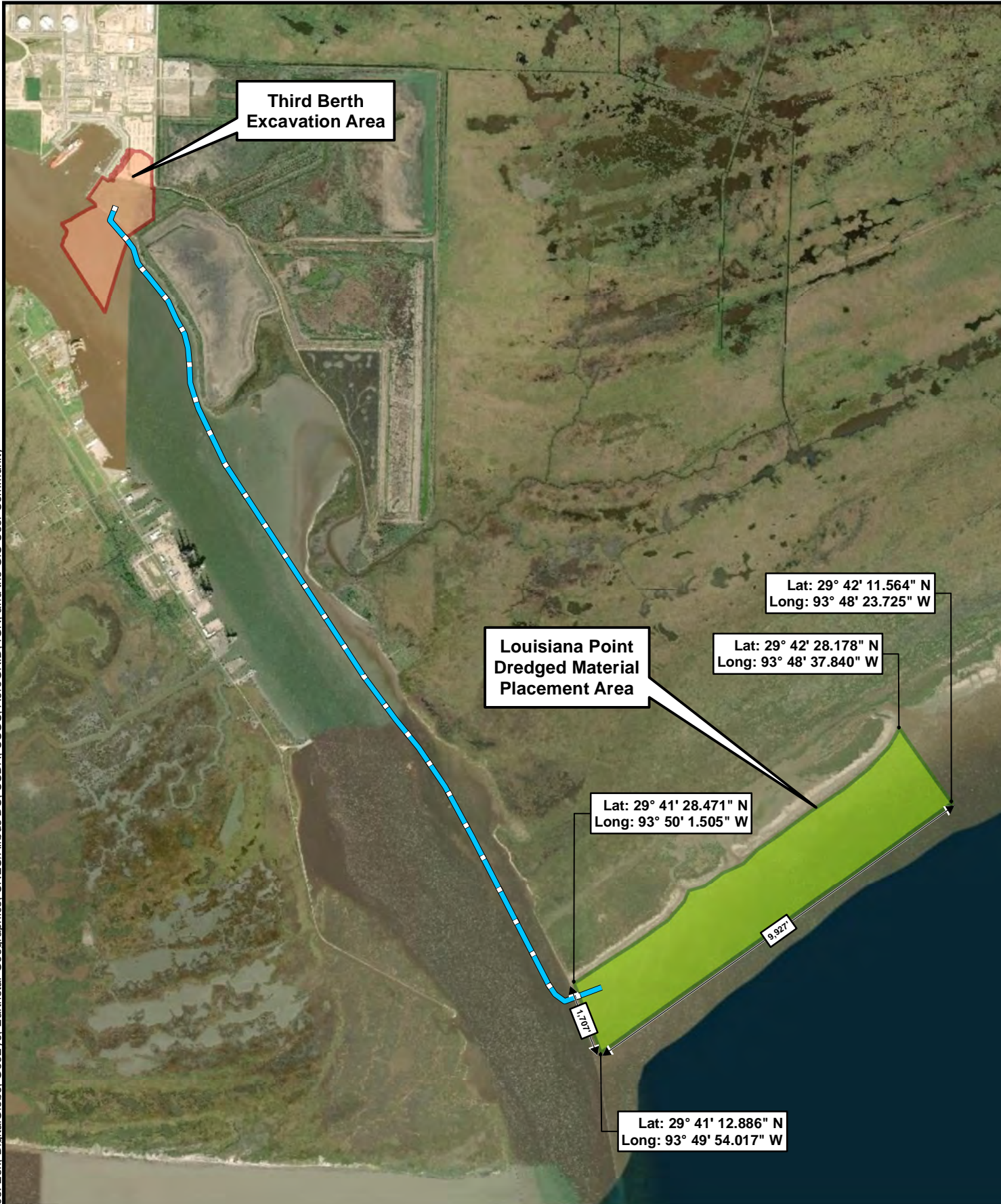
Latitude: 29.738964 (29° 44' 20.269" N)  
 Longitude: -93.868425 (93° 52' 6.329" W)






	Third Berth Impact Area		Outfall 001	
	Staging Area		Third Berth Center	
	Existing Construction Dock			
	Existing Access Road			
	Proposed Permanent Access Road	Scale in Feet		
	State Coastal Zone Boundary			

Figure 1  
 Project Vicinity Map  
 Sabine Pass LNG, L.P.  
 Third Berth Expansion Project  
 Cameron Parish, Louisiana





Path: Z:\Clients\ENS\CheniereEnr\104105\_SLNG3RDBERTH\Studies\Geospatial\DataFiles\ArcDocs\CheniereSPLNG\_Weiland\_Mitigation.mxd ewemmerich 4/15/2019  
 COPYRIGHT © 2019 BURNS & MCDONNELL ENGINEERING COMPANY, INC.  
 Service Layer Credits: Source: Esri, DigitalGlobe, GeoEye, Earthstar Geographics, CNES/Airbus DS, USDA, USGS, AeroGRID, IGN, and the GIS User Community

-  Dredged Material Piping Route to Louisiana Point (4.4 miles)
-  Third Berth Excavation Area
-  Louisiana Point Dredged Material Placement Area

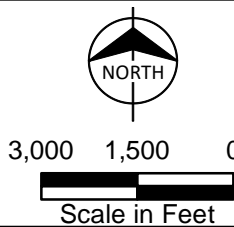


Figure 2  
 Sabine Pass LNG, L.P.  
 Third Berth Expansion Project  
 Beneficial Use of Dredged Material Plan  
 Cameron Parish, LA