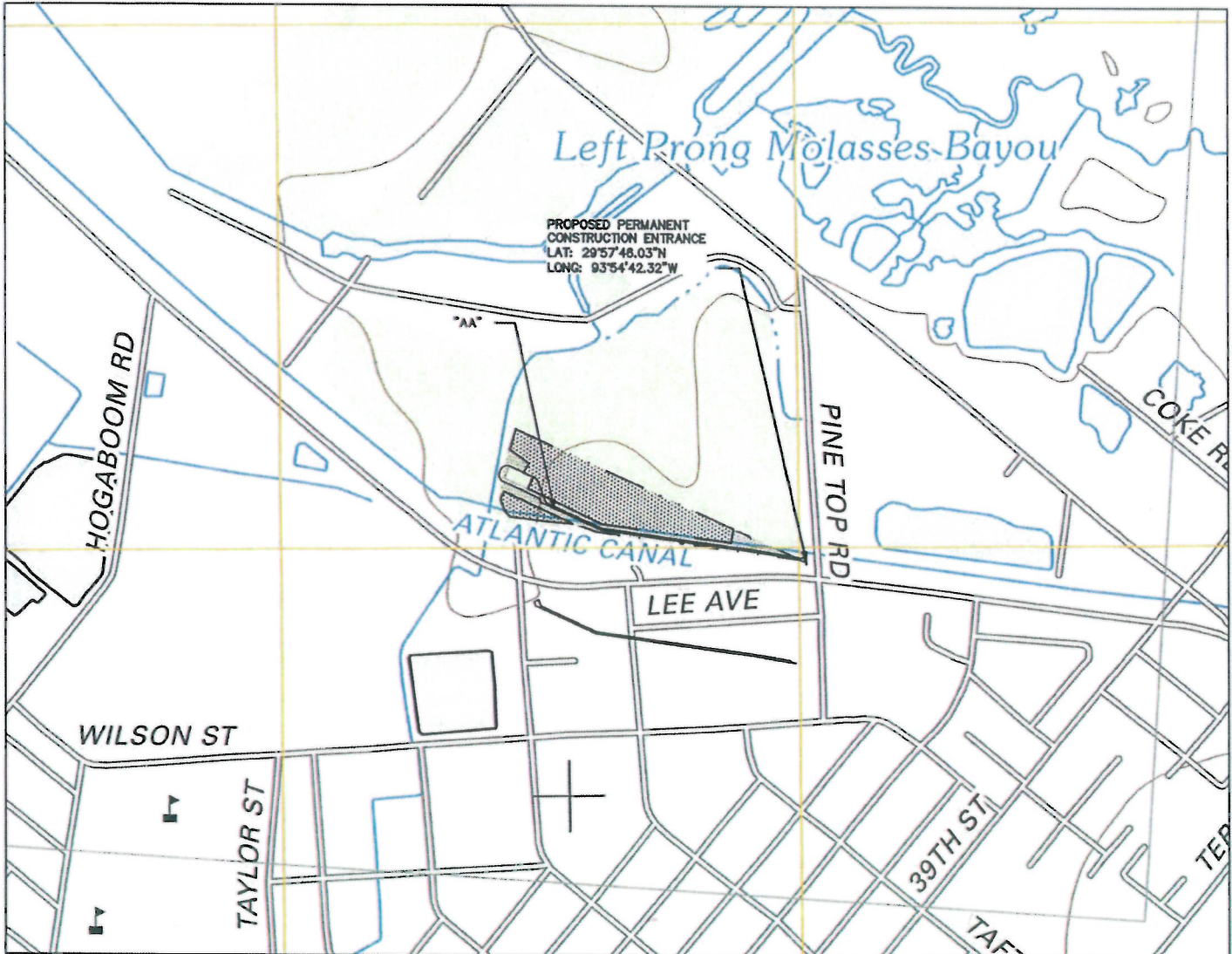


JUN 07 2017



JEFFERSON CO., TEXAS



PROJECT LOCATION MAP

SCALE: 1"=2000'

USGS QUADRANGLE: PORT AUTHOR NORTH
TOPOGRAPHY BY PHOTOGRAMMETRIC METHODS
FROM AERIAL PHOTOGRAPHS TAKEN 1976. FIELD
CHECKED 1977. MAP EDITED 1984.

WETLAND ID	WETLAND TYPE	IMPACT	IMPACTED AREA (AC)
AA	EMERGENT	PERMANENT	0.81 AC

NOTES:

1. THESE DOCUMENTS ARE BASED UPON THE FOLLOWING INFORMATION: SURVEYED TOPOGRAPHY WAS DEVELOPED BY MARK WHITELEY AND ASSOCIATES IN FEBRUARY AND MARCH IN 2015.
2. ALL COORDINATES, DISTANCES AND ELEVATIONS ARE REFERENCE TO THE STATE PLANE COORDINATE SYSTEM OF TEXAS SOUTH CENTRAL ZONE, NORTH AMERICAN DATUM 1983, NAVD 83
3. PERMANENT DISTURBED EMERGENT WETLAND = 0.81 AC

ENGINEERING RECORD	
DRAWN BY	STV
CHECKED BY	AW
APPROVED BY	JC
DATE	07/14/16
SCALE	1"= 1000'

REV.	DATE	APP#	ISSUED FOR PERMIT	DESCRIPTION	LG/AW	APPROVAL
A	01/13/17					

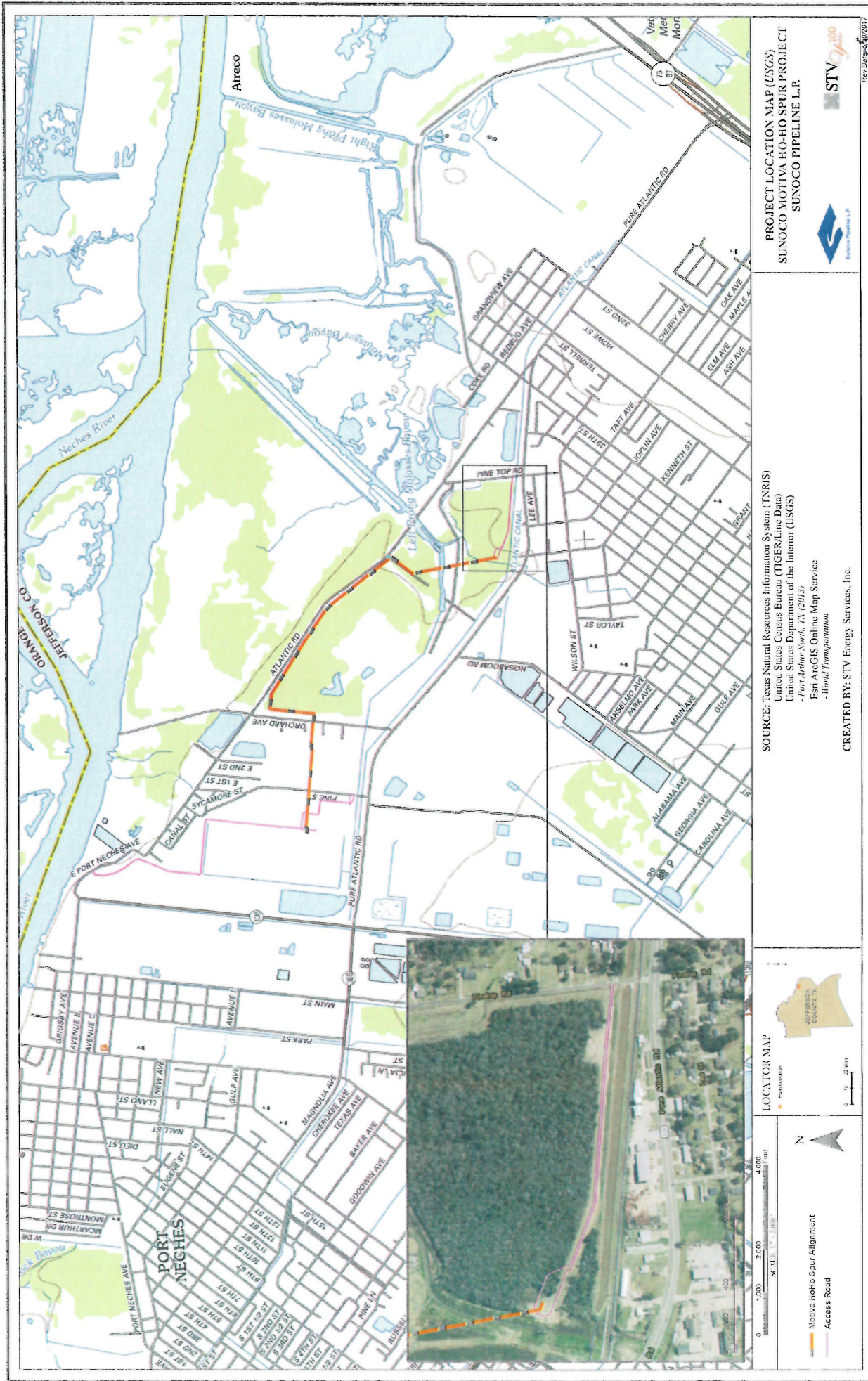


PROPOSED PERMANENT
ACCESS ROAD
TO SUNOCO FACILITY

OLD DRAWING NO.

DWG. NO.
38-16487-C-807

REV. NO.
A

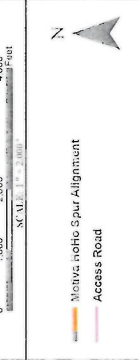


PROJECT LOCATION MAP (USGS)
 SUNOCO MOTIVA HO-HO SPUR PROJECT
 SUNOCO PIPELINE L.P.



SOURCE: Texas Natural Resources Information System (TNRIS)
 United States Census Bureau (TIGER/Line Data)
 United States Department of the Interior (USGS)
 -Port Arthur, Norfolk, TX (2013)
 Esri ArcGIS Online, Map Service
 -Hindall Transportation

CREATED BY: STV Energy Services, Inc.



Rev. Date: 8/25/2017
 1007 07 2017

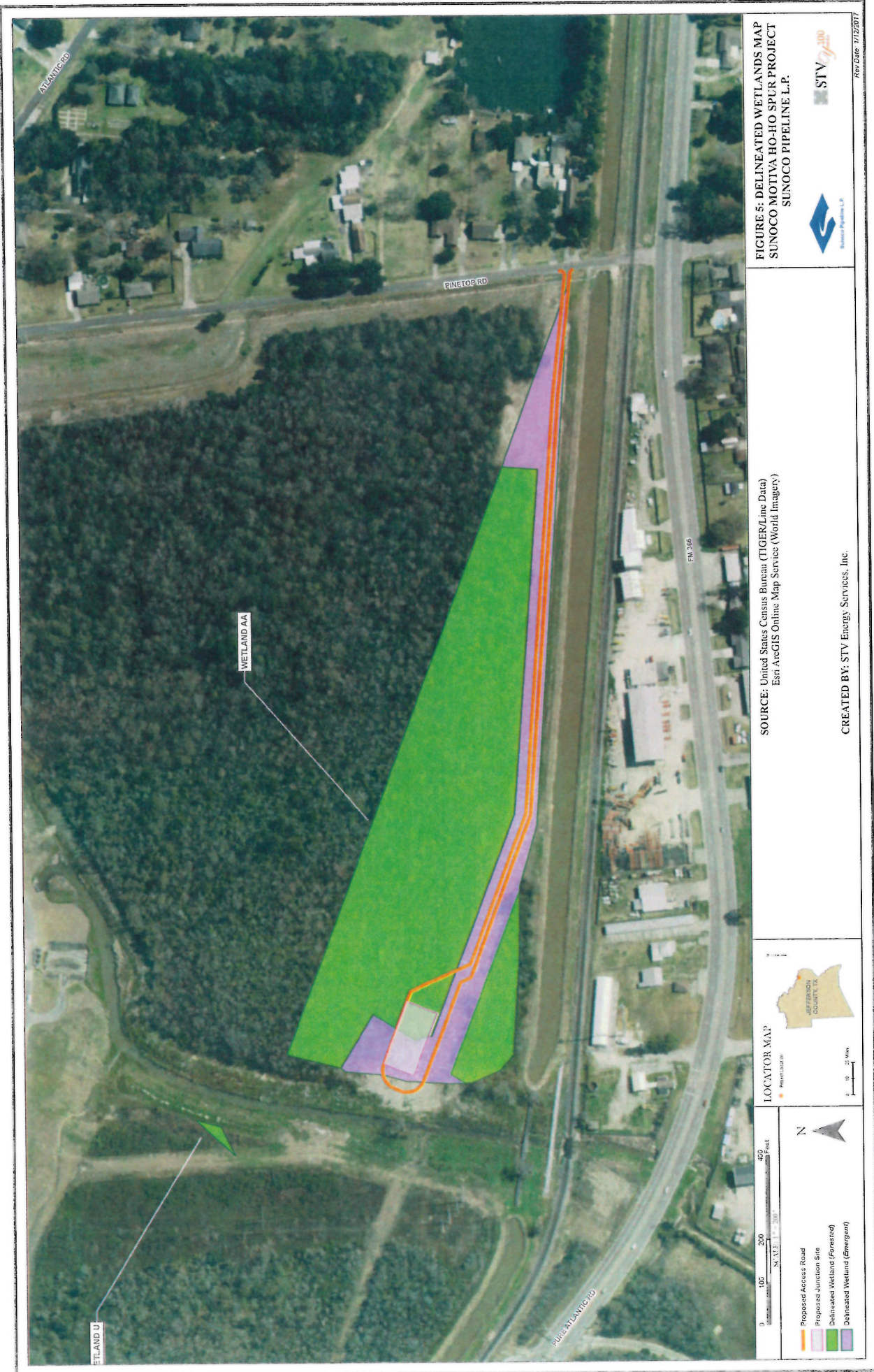


FIGURE 5: DELINEATED WETLANDS MAP
SUNOCO MOTIVA HO-HO SPUR PROJECT
SUNOCO PIPELINE L.P.

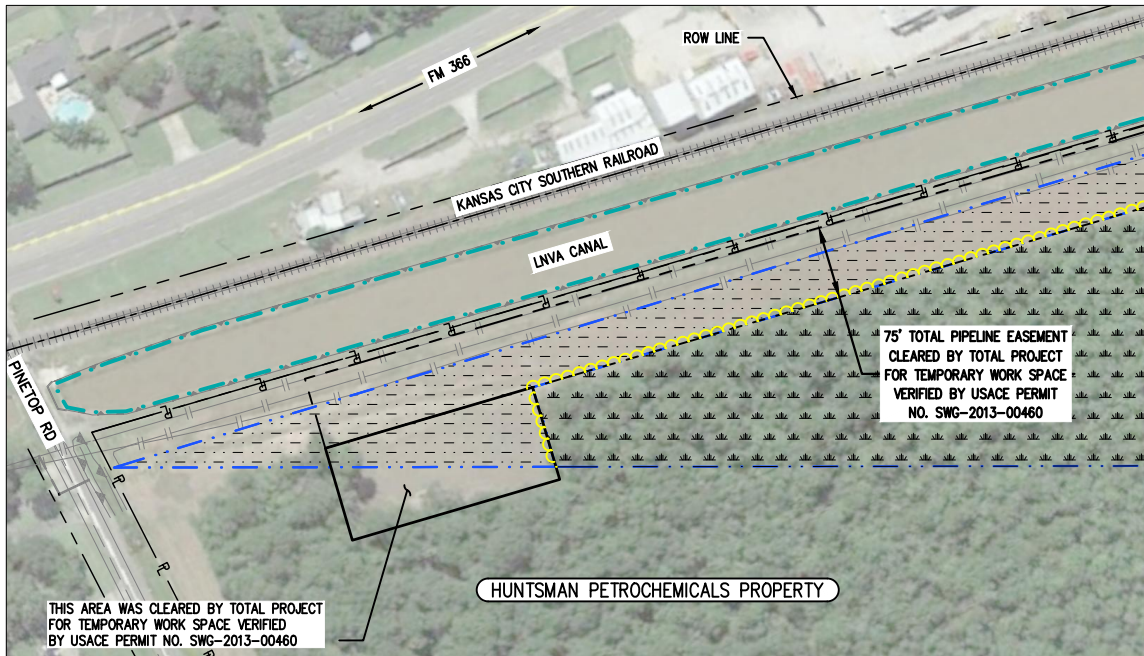
SOURCE: United States Census Bureau (TIGER/Line Data)
 Esri ArcGIS Online, Map Service (World Imagery)

CREATED BY: STV Energy Services, Inc.



Rev Date: 1/12/2017

JUN 07 2017



LEGEND

- LNVA CANAL BOUNDARY
- EXISTING SUNOCO PIPELINE ROW
- EXISTING PIPELINE
- PROPERTY LINE
- EXISTING DRAINAGE CULVERT
- EXISTING RAILROAD
- EXISTING FOREIGN PIPELINE
- EXISTING TOP BANK
- EXISTING CL OF CHANNEL/DITCH
- EXISTING OVERHEAD POWER LINE
- EXISTING FENCE LINE
- EXISTING TREE LINE
- FORESTED WETLAND AREA (NOT IMPACTED)
- EMERGENT WETLAND AREA

NOTES:

1. THESE DOCUMENTS ARE BASED UPON THE FOLLOWING INFORMATION: SURVEYED TOPOGRAPHY WAS DEVELOPED BY MARK WHITELEY AND ASSOCIATES IN FEBRUARY AND MARCH OF 2015.
2. ALL COORDINATES, DISTANCES AND ELEVATIONS ARE REFERENCE TO THE STATE PLANE COORDINATE SYSTEM OF TEXAS SOUTH CENTRAL ZONE, NORTH AMERICAN DATUM 1983, NAVD 83
3. PERMANENT DISTURBED EMERGENT WETLAND = 0.81 AC
4. TOTAL GRAVEL FILL REQUIRED FOR ACCESS ROAD WITHIN WETLAND = 384 CU YDS
5. TOTAL LENGTH OF PROPOSED GRAVEL FILL MATERIAL (ACCESS ROAD) = 2005- FEET.
6. APPROXIMATE DISTANCE FROM HURRICANE LEVEE BOUNDARY TO NEAREST CORNER OF JUNCTION SITE = 1,170 LF

PLAN VIEWS
SCALE: 1" = 200'

B	08/16/17	RE-ISSUED FOR PERMIT	RS/AW
A	05/30/17	ISSUED FOR PERMIT	LG/AW
REV.	DATE	APP#	DESCRIPTION
			DWN/APP

ENGINEERING RECORD	
DRAWN BY	STV
CHECKED BY	AW
APPROVED BY	JC
DATE	05/30/17
SCALE	1" = 200'

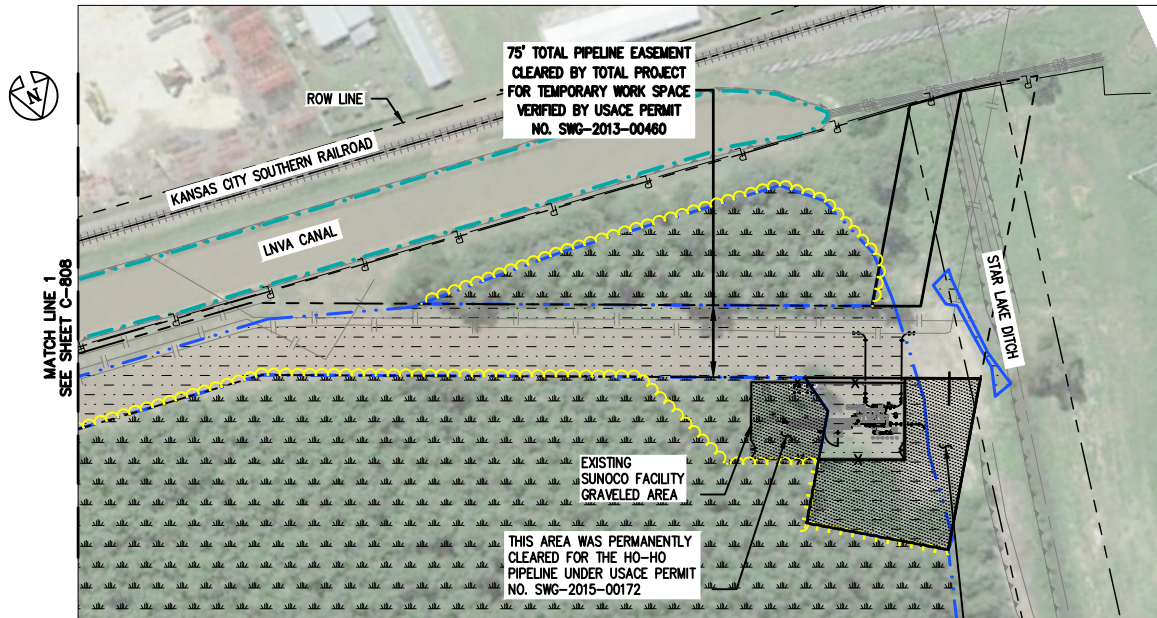


EXISTING CONDITIONS
PRIOR TO ACCESS ROAD TO SUNOCO
FACILITY CONSTRUCTION

OLD DRAWING NO.

DWG. NO.
38-16487-C-808

REV. NO.
B



THIS AREA WAS TEMPORARILY CLEARED FOR CONSTRUCTION WORK SPACE BY TOTAL PROJECT, AND WILL GROW BACK, VERIFIED BY USACE PERMIT NO. SWG-2013-00460

LEGEND

- LNUA CANAL BOUNDARY
- EXISTING SUNOCO PIPELINE ROW
- EXISTING PIPELINE
- PROPERTY LINE
- EXISTING DRAINAGE CULVERT
- EXISTING RAILROAD
- EXISTING FOREIGN PIPELINE
- EXISTING TOP BANK
- EXISTING CL OF CHANNEL/DITCH
- EXISTING OVERHEAD POWER LINE
- EXISTING FENCE LINE
- EXISTING TREE LINE
- FORESTED WETLAND AREA (NOT IMPACTED)
- EMERGENT WETLAND AREA

NOTES:

1. THESE DOCUMENTS ARE BASED UPON THE FOLLOWING INFORMATION: SURVEYED TOPOGRAPHY WAS DEVELOPED BY MARK WHITELEY AND ASSOCIATES IN FEBRUARY AND MARCH OF 2015.
2. ALL COORDINATES, DISTANCES AND ELEVATIONS ARE REFERENCE TO THE STATE PLANE COORDINATE SYSTEM OF TEXAS SOUTH CENTRAL ZONE, NORTH AMERICAN DATUM 1983. NAVD 83
3. PERMANENT DISTURBED EMERGENT WETLAND = 0.81 AC
4. TOTAL GRAVEL FILL REQUIRED FOR ACCESS ROAD WITHIN WETLAND = 384 CU YDS
5. TOTAL LENGTH OF PROPOSED GRAVEL FILL MATERIAL (ACCESS ROAD) = 2005- FEET.
6. APPROXIMATE DISTANCE FROM HURRICANE LEVEE BOUNDARY TO NEAREST CORNER OF JUNCTION SITE = 1,170 LF

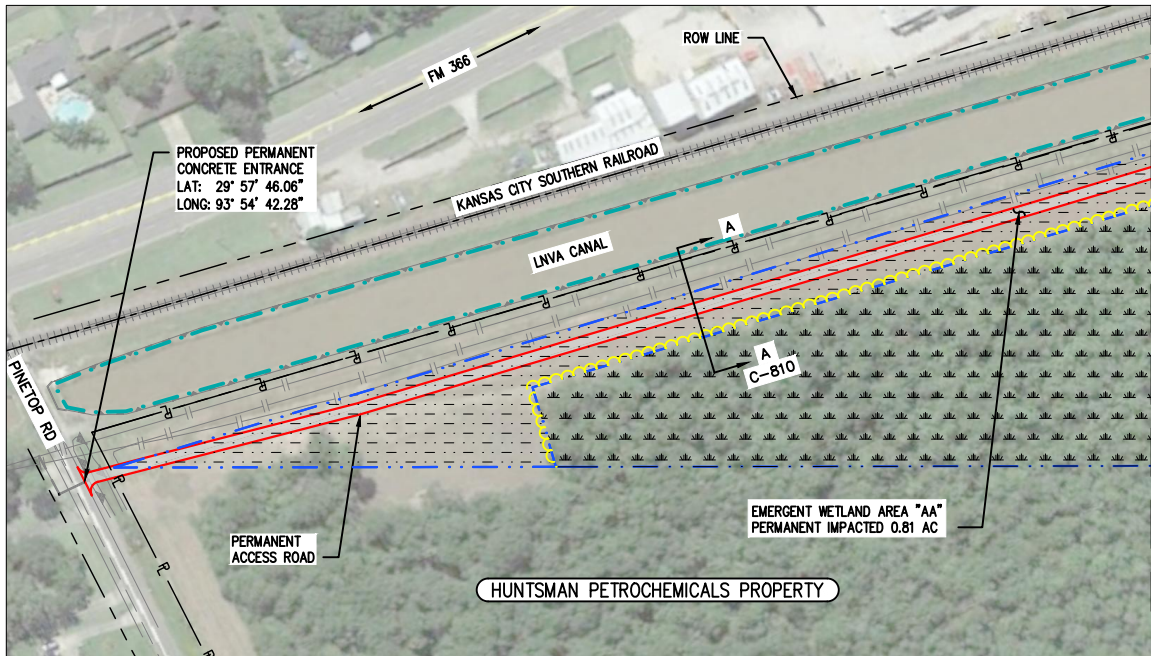
PLAN VIEWS
SCALE: 1" = 200'

B	08/16/17		RE-ISSUED FOR PERMIT	RS/AW
A	05/30/17		ISSUED FOR PERMIT	LG/AW
REV.	DATE	APP#	DESCRIPTION	DWN/APP

ENGINEERING RECORD	
DRAWN BY	STV
CHECKED BY	AW
APPROVED BY	JC
DATE	05/30/17
SCALE	1" = 200'

EXISTING CONDITIONS
PRIOR TO ACCESS ROAD TO SUNOCO
FACILITY CONSTRUCTION

OLD DRAWING NO.	DWG. NO. 38-16487-C-809	REV. NO. B
-----------------	-----------------------------------	----------------------



MATCH LINE 1
SEE SHEET C-811

LEGEND

- LNVA CANAL BOUNDARY
- EXISTING SUNOCO PIPELINE ROW
- EXISTING PIPELINE
- PROPERTY LINE
- EXISTING DRAINAGE CULVERT
- EXISTING RAILROAD
- EXISTING FOREIGN PIPELINE
- EXISTING TOP BANK
- EXISTING CL OF CHANNEL/DITCH
- EXISTING OVERHEAD POWER LINE
- EXISTING FENCE LINE
- EXISTING TREE LINE
- FORESTED WETLAND AREA (NOT IMPACTED)
- EMERGENT WETLAND AREA
- PROPOSED GRAVEL ACCESS ROAD


NOTES:

1. THESE DOCUMENTS ARE BASED UPON THE FOLLOWING INFORMATION: SURVEYED TOPOGRAPHY WAS DEVELOPED BY MARK WHITELEY AND ASSOCIATES IN FEBRUARY AND MARCH OF 2015.
2. ALL COORDINATES, DISTANCES AND ELEVATIONS ARE REFERENCE TO THE STATE PLANE COORDINATE SYSTEM OF TEXAS SOUTH CENTRAL ZONE, NORTH AMERICAN DATUM 1983, NAVD 83
3. PERMANENT DISTURBED EMERGENT WETLAND = 0.81 AC
4. TOTAL GRAVEL FILL REQUIRED FOR ACCESS ROAD WITHIN WETLAND = 384 CU YDS
5. TOTAL LENGTH OF PROPOSED GRAVEL FILL MATERIAL (ACCESS ROAD) = 2005- FEET.
6. APPROXIMATE DISTANCE FROM HURRICANE LEVEE BOUNDARY TO NEAREST CORNER OF JUNCTION SITE = 1,170 LF

PLAN VIEWS
SCALE: 1" = 200'

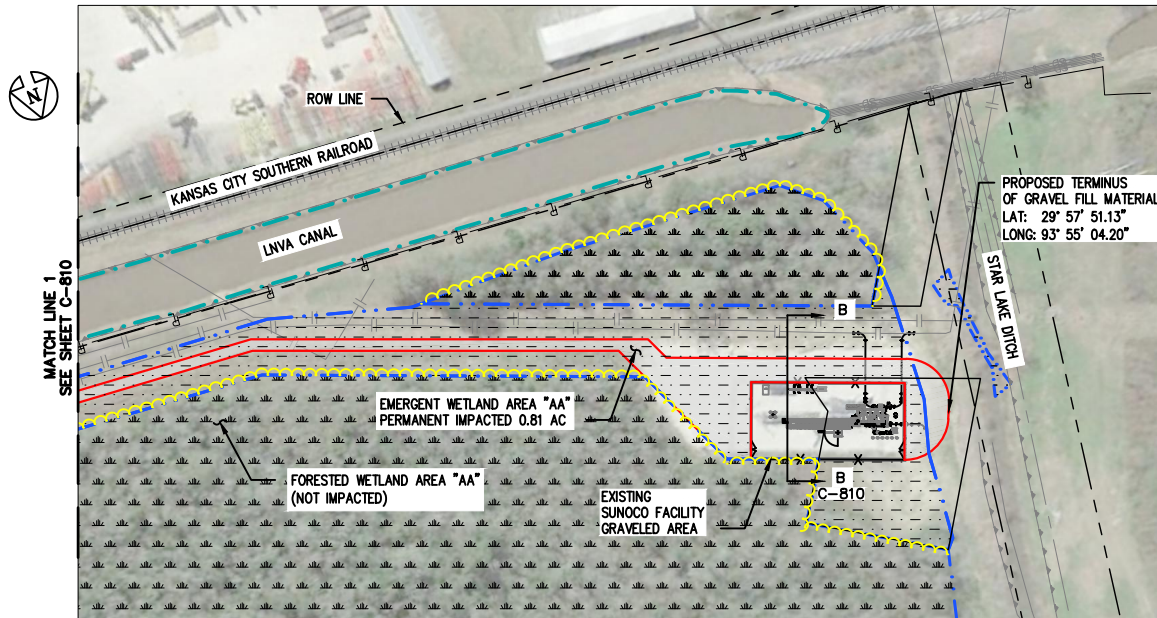
C	08/16/17		RE-ISSUED FOR PERMIT	RS/AW
B	05/30/17		REVISED PER USACE REVIEW	LG/AW
A	01/13/17		ISSUED FOR PERMIT	LG/AW
REV.	DATE	APP#	DESCRIPTION	DWN/APP

ENGINEERING RECORD	
DRAWN BY	STV
CHECKED BY	AW
APPROVED BY	JC
DATE	07/14/16
SCALE	1" = 200'



**PROPOSED PERMANENT
ACCESS ROAD
TO SUNOCO FACILITY**

OLD DRAWING NO.	DWG. NO. 38-16487-C-810	REV. NO. C
-----------------	-----------------------------------	----------------------



LEGEND

- LNVA CANAL BOUNDARY
- EXISTING SUNOCO PIPELINE ROW
- EXISTING PIPELINE
- PROPERTY LINE
- EXISTING DRAINAGE CULVERT
- EXISTING RAILROAD
- EXISTING FOREIGN PIPELINE
- EXISTING TOP BANK
- EXISTING CL OF CHANNEL/DITCH
- EXISTING OVERHEAD POWER LINE
- EXISTING FENCE LINE
- EXISTING TREE LINE
- FORESTED WETLAND AREA (NOT IMPACTED)
- EMERGENT WETLAND AREA
- PROPOSED GRAVEL ACCESS ROAD

NOTES:

1. THESE DOCUMENTS ARE BASED UPON THE FOLLOWING INFORMATION: SURVEYED TOPOGRAPHY WAS DEVELOPED BY MARK WHITELEY AND ASSOCIATES IN FEBRUARY AND MARCH OF 2015.
2. ALL COORDINATES, DISTANCES AND ELEVATIONS ARE REFERENCE TO THE STATE PLANE COORDINATE SYSTEM OF TEXAS SOUTH CENTRAL ZONE, NORTH AMERICAN DATUM 1983. NAVD 83
3. PERMANENT DISTURBED EMERGENT WETLAND = 0.81 AC
4. TOTAL GRAVEL FILL REQUIRED FOR ACCESS ROAD WITHIN WETLAND = 384 CU YDS
5. TOTAL LENGTH OF PROPOSED GRAVEL FILL MATERIAL (ACCESS ROAD) = 2005- FEET.
6. APPROXIMATE DISTANCE FROM HURRICANE LEVEE BOUNDARY TO NEAREST CORNER OF JUNCTION SITE = 1,170 LF

PLAN VIEWS
SCALE: 1" = 200'

C	08/16/17		RE-ISSUED FOR PERMIT	RS/AW
B	05/30/17		REVISED PER USACE REVIEW	LG/AW
A	01/13/17		ISSUED FOR PERMIT	LG/AW
REV.	DATE	APP#	DESCRIPTION	DWN/APP

ENGINEERING RECORD	
DRAWN BY	STV
CHECKED BY	AW
APPROVED BY	JC
DATE	07/14/16
SCALE	1" = 200'

PROPOSED PERMANENT
ACCESS ROAD
TO SUNOCO FACILITY

OLD DRAWING NO.	DWG. NO. 38-16487-C-811	REV. NO. C
-----------------	-----------------------------------	----------------------