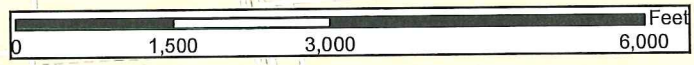


Legend
 [Black Outline] Study Area, ~90-acres

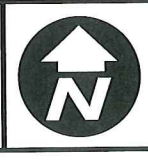


Sources: Esri, HERE, DeLorme, USGS, Intermap, increment P Corp., NRCAN, Esri Japan, METI, Esri China (Hong Kong), Esri (Thailand), Swisstopo, MapmyIndia, © OpenStreetMap contributors, and the GIS User Community

1	DATE:	03/31/2016
	DESIGN:	SCF
	DRAWN:	SCF
	CHECKED:	LDC
	KHA NO.:	064471000

Vicinity Map

MetroPark Square
 Shenandoah
 Montgomery County, Texas



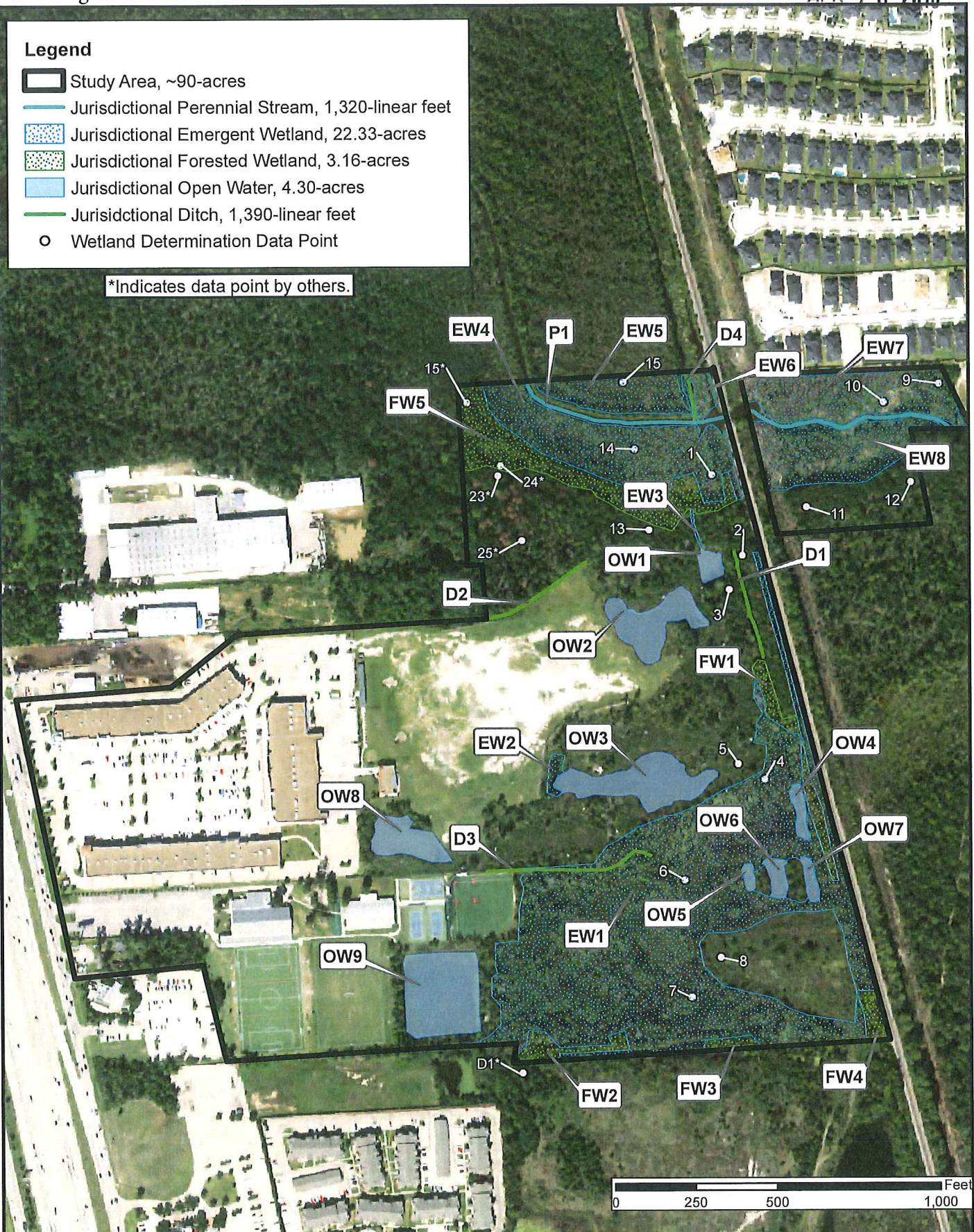
Kimley»Horn

This product is for informational purposes and may not have been prepared for or be suitable for legal, engineering, or surveying purposes. It does not represent an on-the-ground survey and represents only the approximate relative location of property boundaries.

Legend

-  Study Area, ~90-acres
-  Jurisdictional Perennial Stream, 1,320-linear feet
-  Jurisdictional Emergent Wetland, 22.33-acres
-  Jurisdictional Forested Wetland, 3.16-acres
-  Jurisdictional Open Water, 4.30-acres
-  Jurisdictional Ditch, 1,390-linear feet
-  Wetland Determination Data Point

*Indicates data point by others.



SHEET 3 OF 5 SHEETS	DATE: 04/18/2016
	DESIGN: SCF
	DRAWN: SCF
	CHECKED: LDC
	KHA NO.: 064471000

Waters of the U.S. Map
Aerial Source: TNRS 2014







MetroPark Square
Shenandoah
Montgomery County, Texas

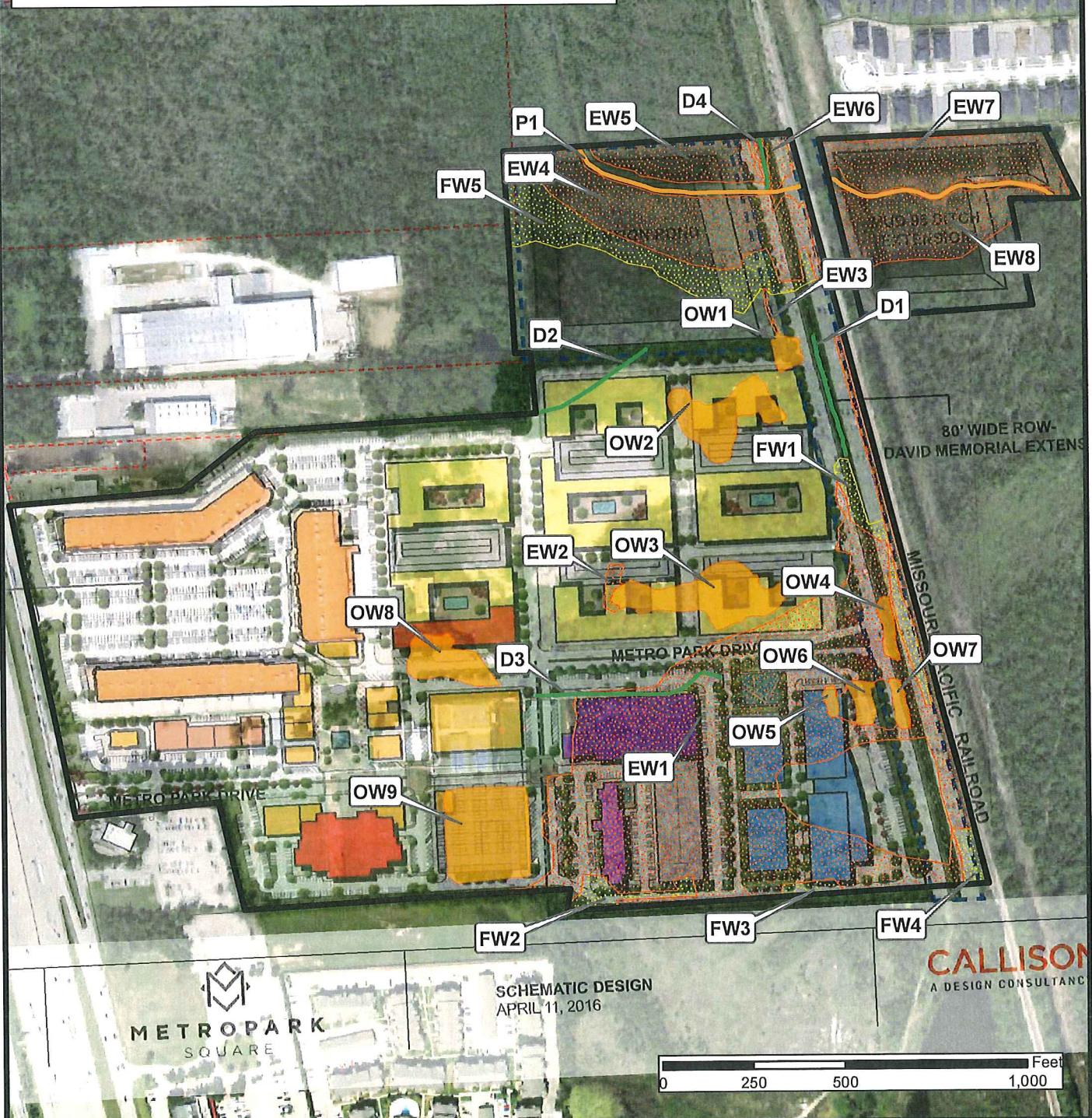


Kimley»Horn

This product is for informational purposes and may not have been prepared for or be suitable for legal, engineering, or surveying purposes. It does not represent an on-the-ground survey and represents only the approximate relative location of property boundaries.

Legend

-  Study Area, ~90-acres
-  Impacted Jurisdictional Perennial Stream, 1,320-linear feet
-  Impacted Jurisdictional Ditch, 1,390-linear feet
-  Impacted Jurisdictional Emergent Wetland, 22.33-acres
-  Impacted Jurisdictional Forested Wetland, 3.16-acres
-  Impacted Jurisdictional Open Water, 4.30-acres



SHEET

1

OF 1 SHEET

DATE:	04/18/2016
DESIGN:	SCF
DRAWN:	SCF
CHECKED:	LDC
KHA NO.:	064471000

Impacts Map

Aerial Source: TNRIS 2014

MetroPark Square

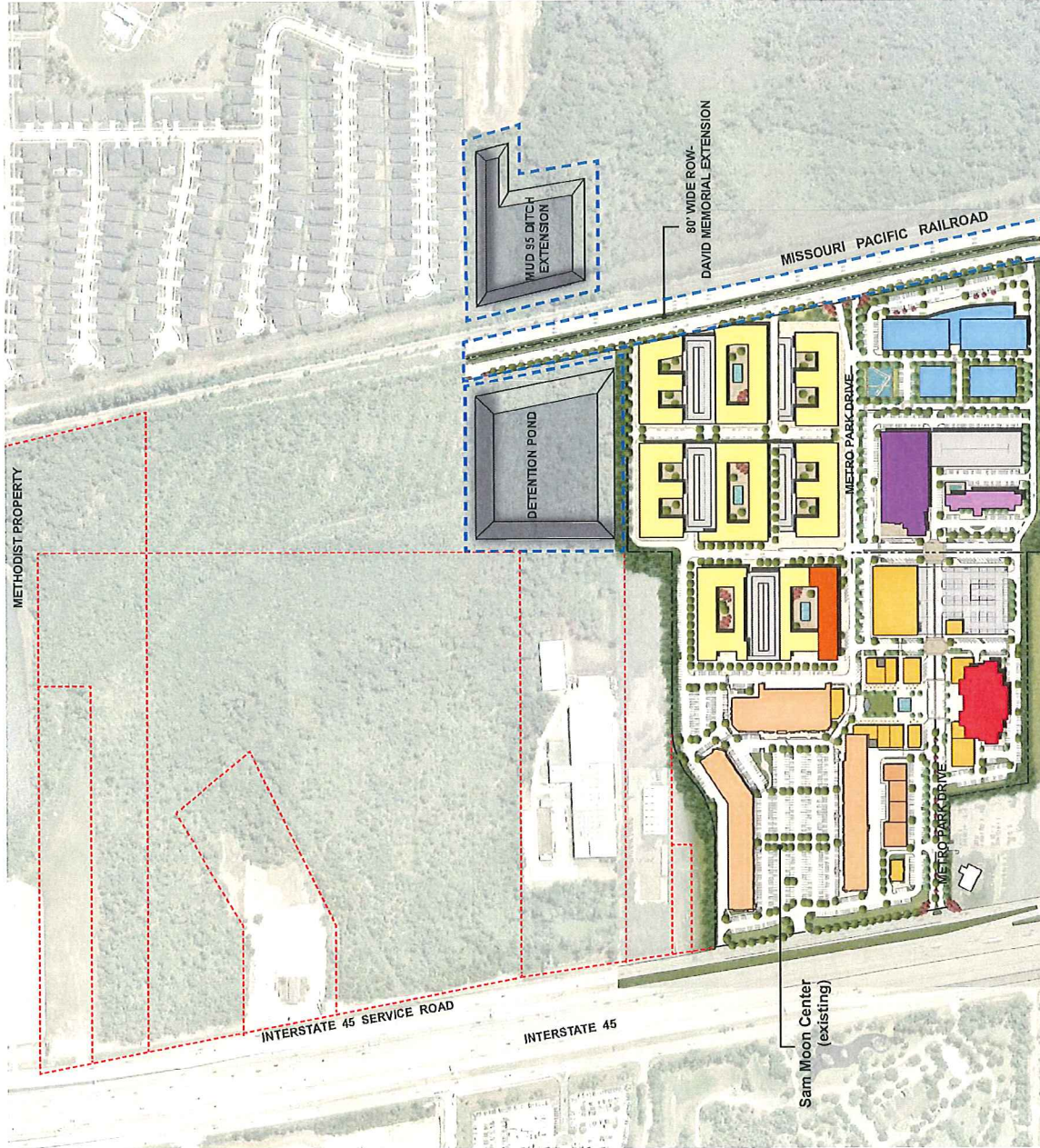
Shenandoah
Montgomery County, Texas



Kimley»Horn

This product is for informational purposes and may not have been prepared for or be suitable for legal, engineering, or surveying purposes. It does not represent an on-the-ground survey and represents only the approximate relative location of property boundaries.

APR 20 2016



PROGRAM DATA:

MULTI-FAMILY	MIXED-USE	RETAIL (EXISTING)	RETAIL (FUTURE)	F&B (FUTURE)	SERVICE /BOH ACCESS	THEATRE	ADDITIONAL PROGRAM
[Yellow Box]	[Orange Box]	[Light Orange Box]	[Dark Orange Box]	[Yellow-Green Box]	[Grey Box]	[Red Box]	[Blue Box]
							OFFICE
							HOTEL #1
							HOTEL #2

Note: This plan is diagrammatic (conceptual) only and is based on a preliminary site survey. It is not intended to be a final survey of existing site conditions such as property lines, topography, utility easements, etc.

SCALE 1" = 400'
AT 11 X 17

1

SITE PLAN STUDY - Maximum Impact

CALLISON|RTKL
A DESIGN CONSULTANCY OF ARCADIS

SCHEMATIC DESIGN
APRIL 11, 2016

METROPARK
SQUARE

SAM MOON GROUP
11822 HARRY HINES BLVD.
DALLAS, TX 75234

SAM MOON METRO PARK
SHENANDOAH, TX (WOODLANDS)
1845 W. South, Shermanport, TX 77385
05/17/2015

Table 1 is a summary of observed waters of the U.S. on the project area

Site number	Latitude	Longitude	Cowardin Class	Estimated amount of aquatic resource in review area	Class of aquatic resource
EW1	30.194	-95.448	Palustrine	14.25-acres	section 404 - nontidal
EW2	30.196	-95.448	Palustrine	0.10-acres	section 404 - nontidal
EW3	30.198	-95.447	Palustrine	0.02-acres	section 404 - nontidal
EW4	30.198	-95.447	Palustrine	2.88-acres	section 404 - nontidal
EW5	30.199	-95.447	Palustrine	1.03-acres	section 404 - nontidal
EW6	30.199	-95.447	Palustrine	0.20-acres	section 404 - nontidal
EW7	30.199	-95.445	Palustrine	1.96-acres	section 404 - nontidal
EW8	30.198	-95.445	Palustrine	1.89-acres	section 404 - nontidal
FW1	30.196	-95.446	Palustrine	0.51-acres	section 404 - nontidal
FW2	30.193	-95.449	Palustrine	0.35-acres	section 404 - nontidal
FW3	30.193	-95.447	Palustrine	0.13-acres	section 404 - nontidal
FW4	30.193	-95.445	Palustrine	0.21-acres	section 404 - nontidal
FW5	30.198	-95.447	Palustrine	1.96-acres	section 404 - nontidal
OW1	30.197	-95.447	Palustrine	0.15-acres	section 404 - nontidal
OW2	30.197	-95.447	Palustrine	0.80-acres	section 404 - nontidal
OW3	30.196	-95.447	Palustrine	1.07-acres	section 404 - nontidal
OW4	30.195	-95.446	Palustrine	0.14-acres	section 404 - nontidal
OW5	30.195	-95.446	Palustrine	0.06-acres	section 404 - nontidal
OW6	30.195	-95.446	Palustrine	0.15-acres	section 404 - nontidal
OW7	30.195	-95.446	Palustrine	0.11-acres	section 404 - nontidal
OW8	30.195	-95.450	Palustrine	0.51-acres	section 404 - nontidal
OW9	30.194	-95.449	Palustrine	1.31-acres	section 404 - nontidal
P1	30.199	-95.446	Riverine	1,320-linear feet 0.76-acres	section 404 - nontidal
D1	30.197	-95.446	N/A	335-linear feet	section 404 - nontidal
D2	30.197	-95.448	N/A	370-linear feet	section 404 - nontidal
D3	30.194	-95.448	N/A	525-linear feet	section 404 - nontidal
D4	30.199	-95.447	N/A	160-linear feet	section 404 - nontidal