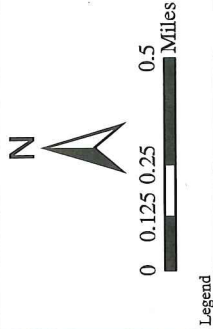


Site Location

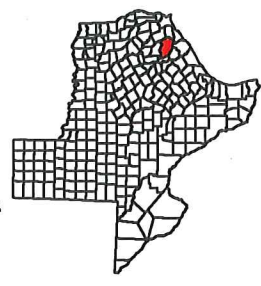
SWG-2016-00440 Ridge Development
 Wetlands on 56-acre tract off Freight Station Road,
 in Seabrook, Harris County, TX.
 Sheet 1 of 8.



Legend
 Site Location

Notes

ESRI Street Map
 Harris County, Texas



Site Location Map

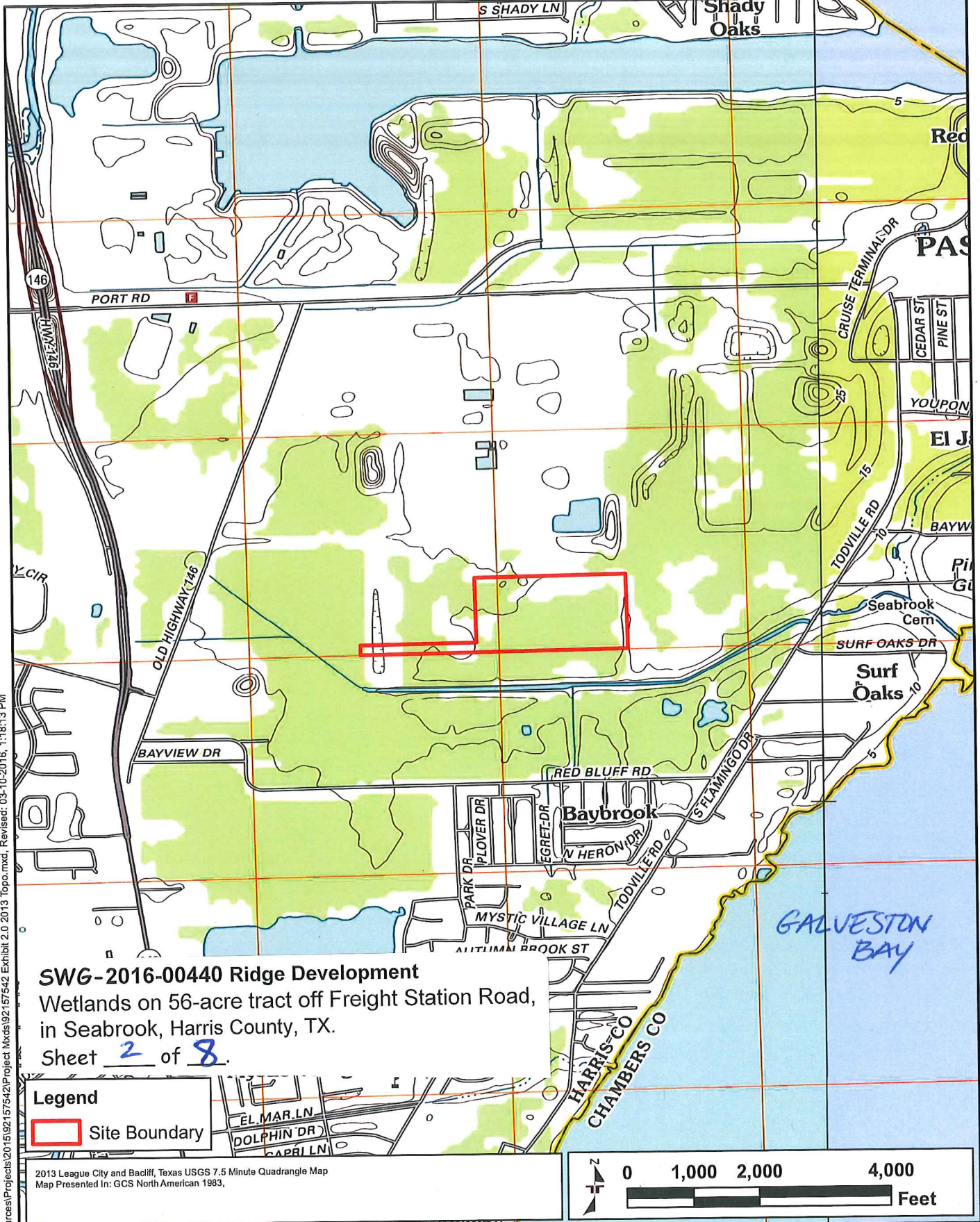
Port of Houston Authority

Bayport Terminal South
 Development (Block 10)

Project: 20001-045
 Date: 09/02/15



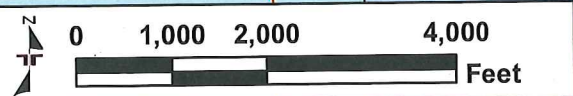
Figure 1



SWG-2016-00440 Ridge Development
 Wetlands on 56-acre tract off Freight Station Road,
 in Seabrook, Harris County, TX.
 Sheet 2 of 8.

Legend
 Site Boundary

2013 League City and Bacliff, Texas USGS 7.5 Minute Quadrangle Map
 Map Presented in: GCS North American 1983,



N:\GIS_Data\Natural Resources\Projects\2015\92157542\Project Mxds\92157542 Exhibit 2.0 2013 Topo.mxd, Revised: 03-10-2016, 1:18:13 PM

DRAWN BY:	REW	 Consulting Engineers and Scientists Terracon Project No. 92157542
CHECKED BY:	GCH	
GIS SCALE:	1" = 2,000'	
DATE:	03-10-2016	

2013 Topographic Map
Bayport Terminal South Development Near Red Bluff Road and Old TX 146 Seabrook, Harris County, Texas

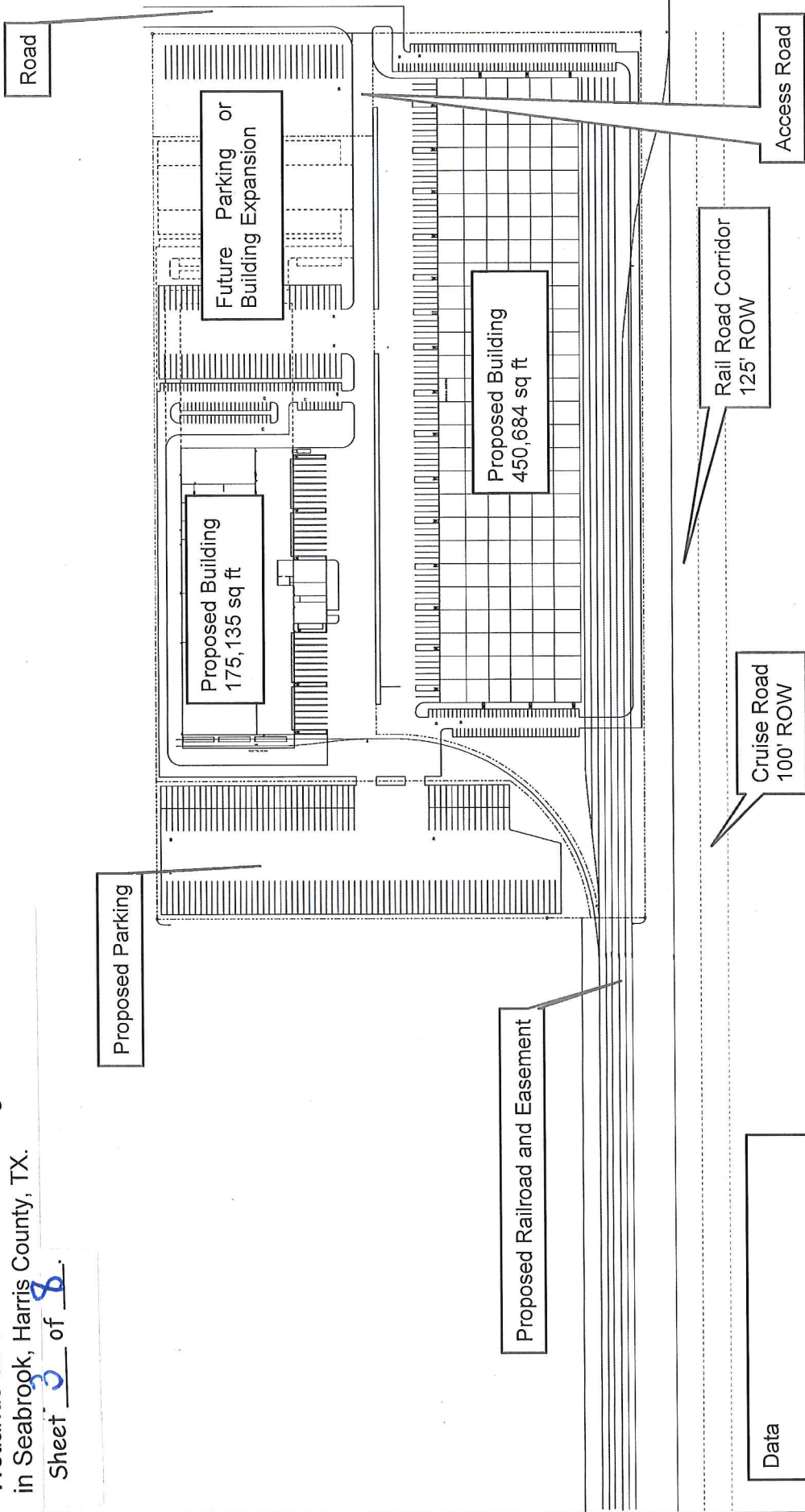
Exhibit 2.0

JUL 20 2016

N:\GIS_Data\Natural Resources\Projects\2015\92157542\Project\Mxd\92157542 Exhibit 7.4.mxd, Revised: 07-19-2016, 2:38:56 PM

SWG-2016-00440 Ridge Development
 Wetlands on 56-acre tract off Freight Station Road,
 in Seabrook, Harris County, TX.

Sheet 3 of 8.



Data	
Site Area:	50.81 acres
USER:	17.45 acres
Ridge:	33.12 acres
Access Road:	0.24 acres
Building Area:	625,819 sq ft

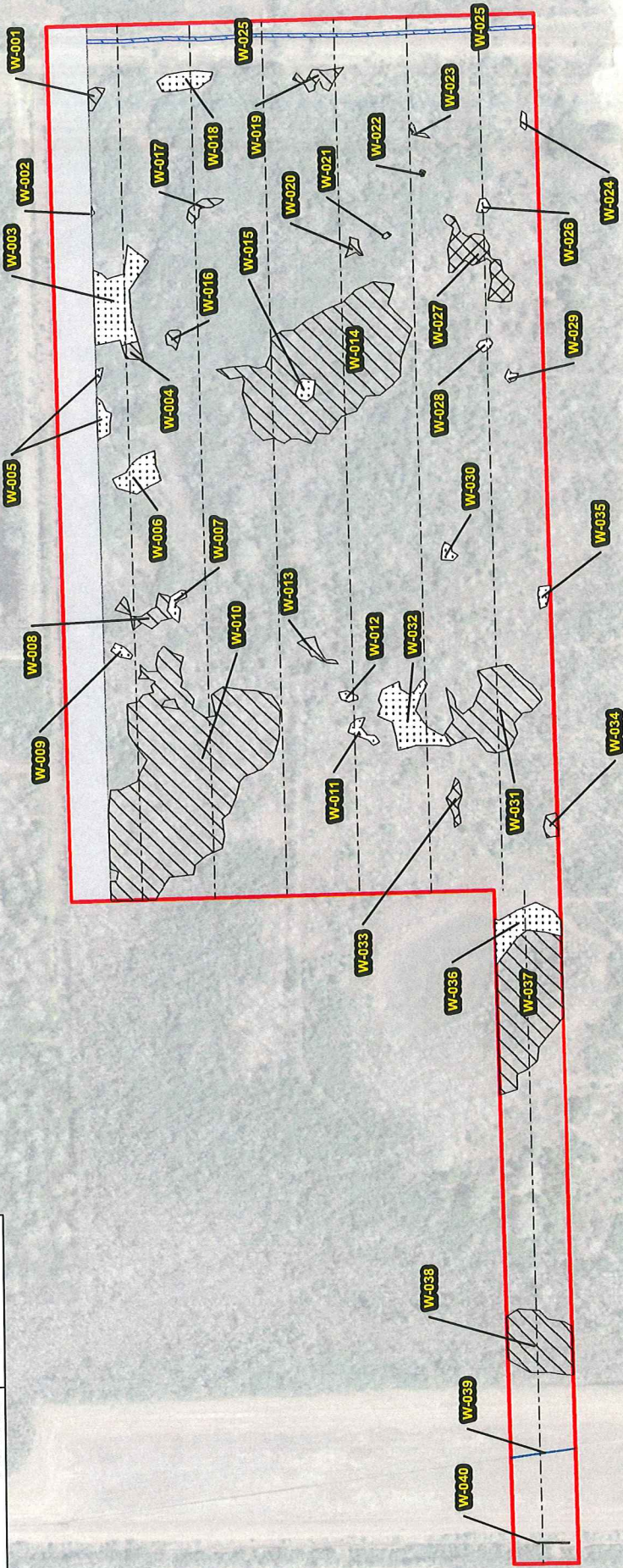
Source: Service Layer Credits:
 Map Presented In: GCS WGS 1984, WGS 1984 Web Mercator Auxiliary Sphere



DRAWN BY:	PRK	Terracon Consulting Engineers and Scientists Terracon Project No. 92157542
CHECKED BY:	GCH	
GIS SCALE:	Not to Scale	
DATE:	07-19-2016	
Detailed Site Construction Plan		Bayport Terminal South Development Near Red Bluff Road and Old TX 146 Seabrook, Harris County, Texas
Exhibit		

SWG-2016-00440 Ridge Development
 Wetlands on 56-acre tract off Freight Station Road,
 in Seabrook, Harris County, TX.
 Sheet 4 of 8.

Feature	Acreege
Scrub-Shrub	0.30
Forested	7.20
Emergent	1.41
Drainage Ditch	0.19
TOTAL	9.1 acres



Legend

- Transects
- [Cross-hatched] Scrub-Shrub
- [Diagonal lines] Forested
- [Dotted] Emergent
- [Blue hatched] Drainage Ditch
- [Red outline] Site Boundary
- [White box] Previously Permitted

February 9, 2015 Aerial Photograph Courtesy of the Texas Natural Resource Information System (TNRIS).
 Map Presented In: GCS WGS 1984, WGS 1984 Web Mercator/Auxiliary Sphere

North Arrow

Scale: 0 212.5 425 850 Feet

DRAWN BY:	JTL
CHECKED BY:	GCH
GIS SCALE:	1" = 425'
DATE:	07-11-2016

Terracon
 Consulting Engineers and Scientists
 Terracon Project No. 92157542

Delineated Features

Bayport Terminal South Development
 Near Red Bluff Road and Old TX 146
 Seabrook, Harris County, Texas

Exhibit
 7.1

SWG-2016-00440 Ridge Development
 Wetlands on 56-acre tract off Freight Station Road,
 in Seabrook, Harris County, TX.

Sheet 5 of 8.

29.592709, -95.008092

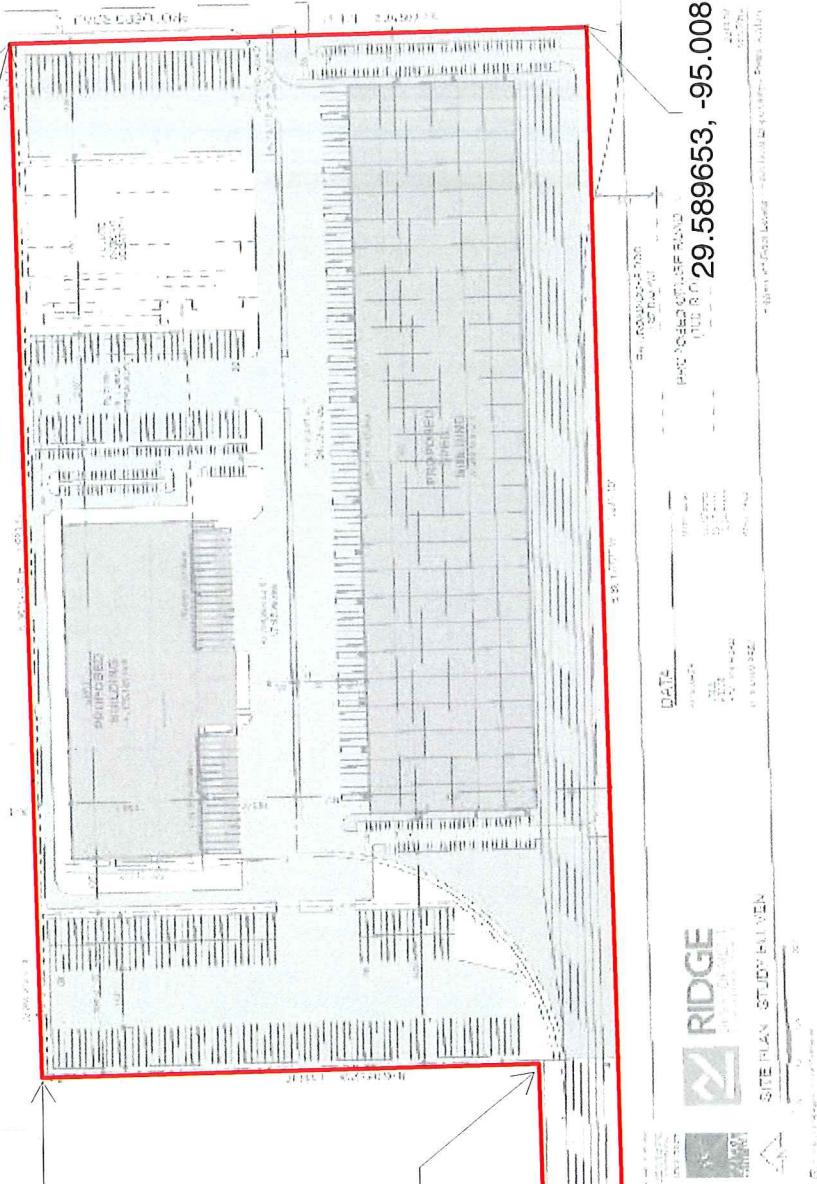
29.592610, -95.014338

29.589975, -95.014295

29.589889, -95.019090

Railroad tracks and railroad easement

29.589493, -95.019090



Sources: Service Layer Credits:
 Map Presented In: GCS WGS 1984, WGS 1984 Web Mercator Auxiliary Sphere

DRAWN BY:	JTL
CHECKED BY:	GCH
GIS SCALE:	1" = 425'
DATE:	07-06-2016

Terracon
 Consulting Engineers and Scientists
 Terracon Project No. 92157542

Plan View without Aquatic Features
 Bayport Terminal South Development
 Near Red Bluff Road and Old TX 146
 Seabrook, Harris County, Texas

Exhibit	7.3
---------	-----

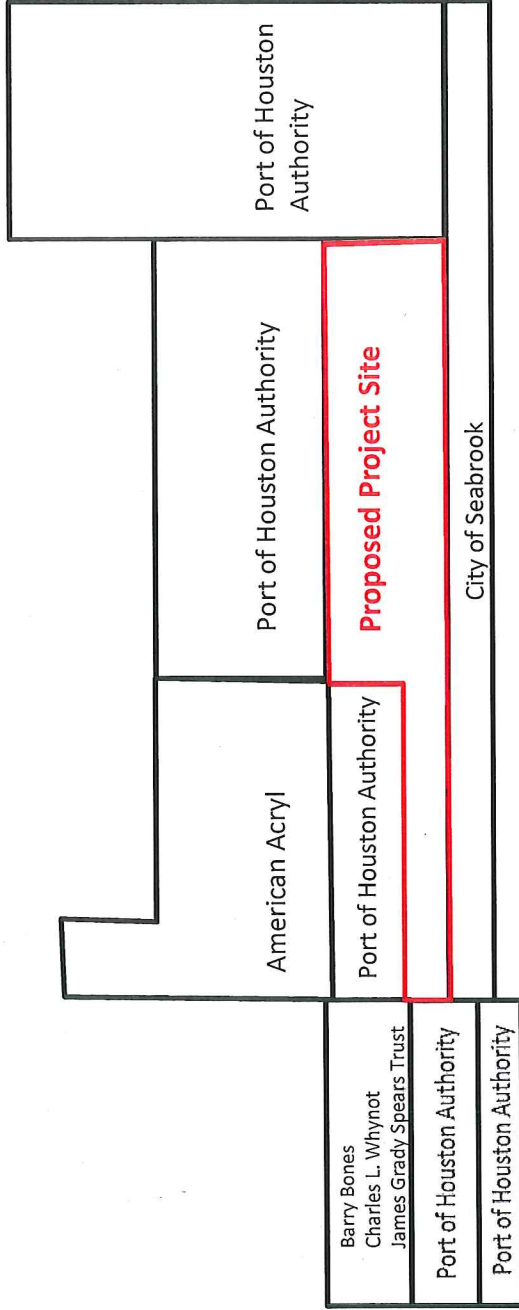
Legend

Site Boundary

SWG-2016-00440 Ridge Development

Wetlands on 56-acre tract off Freight Station Road,
in Seabrook, Harris County, TX.

Sheet 6 of 8.



Project No.	92157542
Scale:	N/A
Source:	N/A
Date:	7/11/2016

Terracon
 Consulting Engineers & Scientists
 11555 Clay Road, Suite 100, Houston, TX 77043
 PH: (713) 690-8989 FAX: (713) 690-8787

Neighboring Property Owners
 Bayport Terminal South Development
 Near Red Buff Road and Old TX 146
 Seabrook, Harris County, Texas

Exhibit
7.5

SWG-2016-00440 Ridge Development
Wetlands on 56-acre tract off Freight Station Road,
in Seabrook, Harris County, TX.
Sheet 1 of 8.



December 12, 2015 Aerial Photograph Courtesy of Google Earth
Map Presented In: GCS North American 1983, NAD 1983 StatePlane Texas South Central FIPS 4204 Feet

2015 Aerial Photograph
Bayport Terminal South Development
Near Red Bluff Road and Old TX 146
Seabrook, Harris County, Texas

Terracon
Consulting Engineers and Scientists
Terracon Project No. 92157542

DRAWN BY:	REW
CHECKED BY:	GCH
GIS SCALE:	1" = 750'
DATE:	03-10-2016

Legend
 Site Boundary

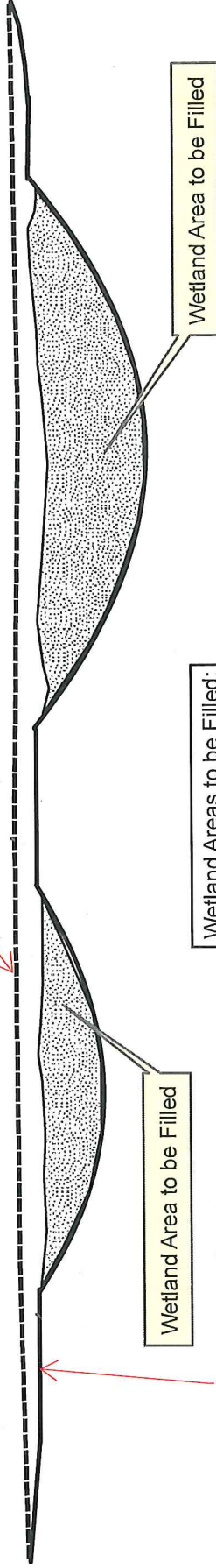
Exhibit
6.0

SWG - 2016-00440 Ridge Development

Wetlands on 56-acre tract off Freight Station Road,
in Seabrook, Harris County, TX.

Sheet 8 of 8.

Proposed Finished Grade 18' msl



Existing average ground 16' msl

Wetland Areas to be Filled:
Max. Depth: 6"
Avg. Depth: 3"

DRAWN BY	CH
CHECKED BY	GH
SCALE	
DATE	09/02/16

Terracon <small>Consulting Engineers & Scientists</small>	
Terracon Project No. 92157542	

Delineated Wetlands Map - Typical Cross Section	
Bayport Terminal South Development Near Red Buff Road and Old TX 146 Seabrook, Harris County, Texas	

Exhibit	8.1
---------	-----