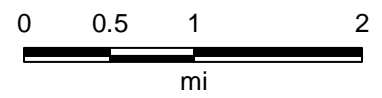


Sources: Esri, HERE, Garmin, Intermap, increment P Corp., GEBCO, USGS, FAO, NPS, NRCAN, GeoBase, IGN, Kadaster NL, Ordnance Survey, Esri Japan, METI, Esri China (Hong Kong), (c) OpenStreetMap contributors, and the GIS User Community

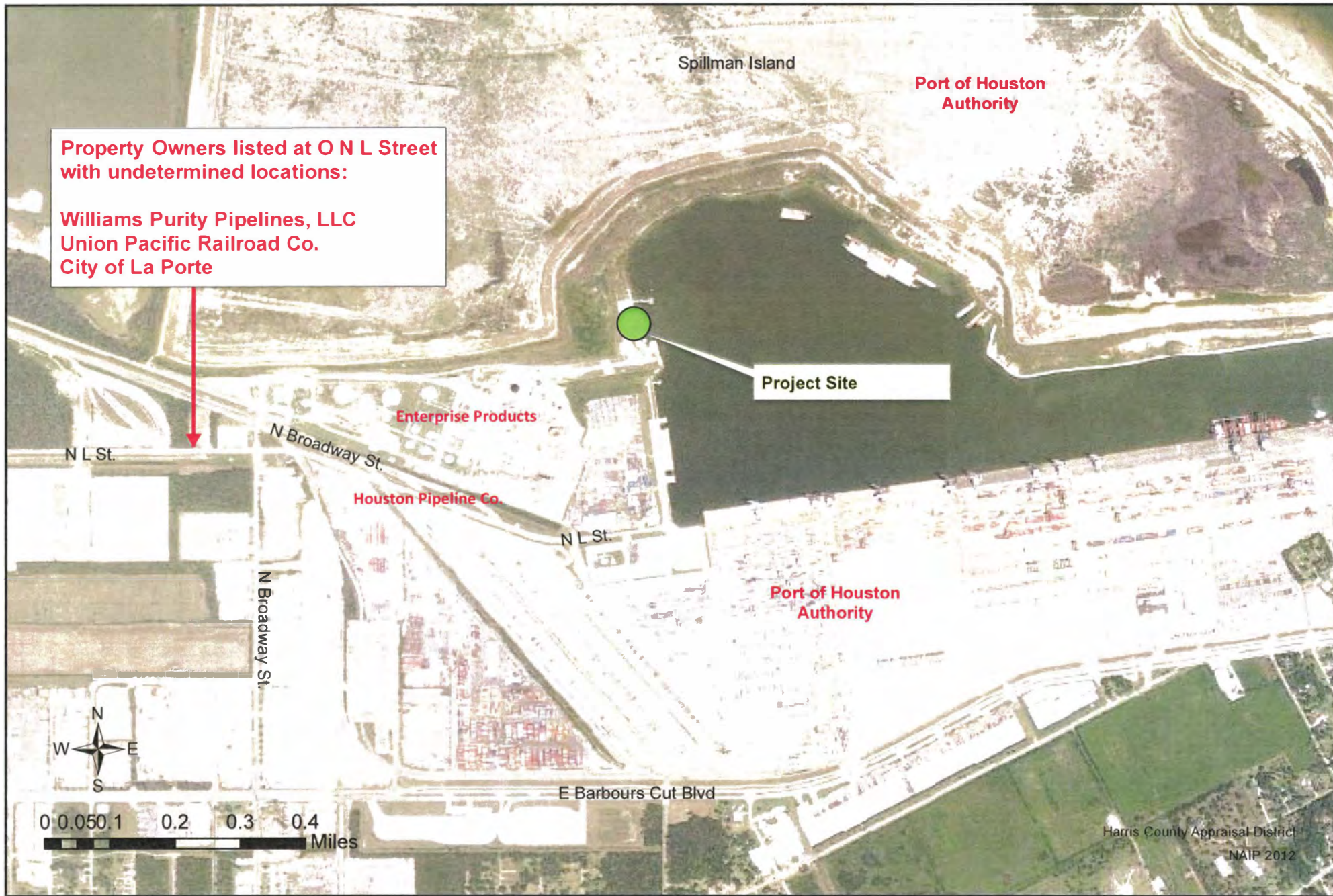


SWG-2014-00905: Vicinity Map



Map Center: -94.9778 29.6931

Map created by on 9/10/2020 at 6:03:25 PM
 Coordinate System: WGS 1984 Web Mercator
 Auxiliary Sphere
 Projection: Mercator Auxiliary Sphere



JUL 29 2020

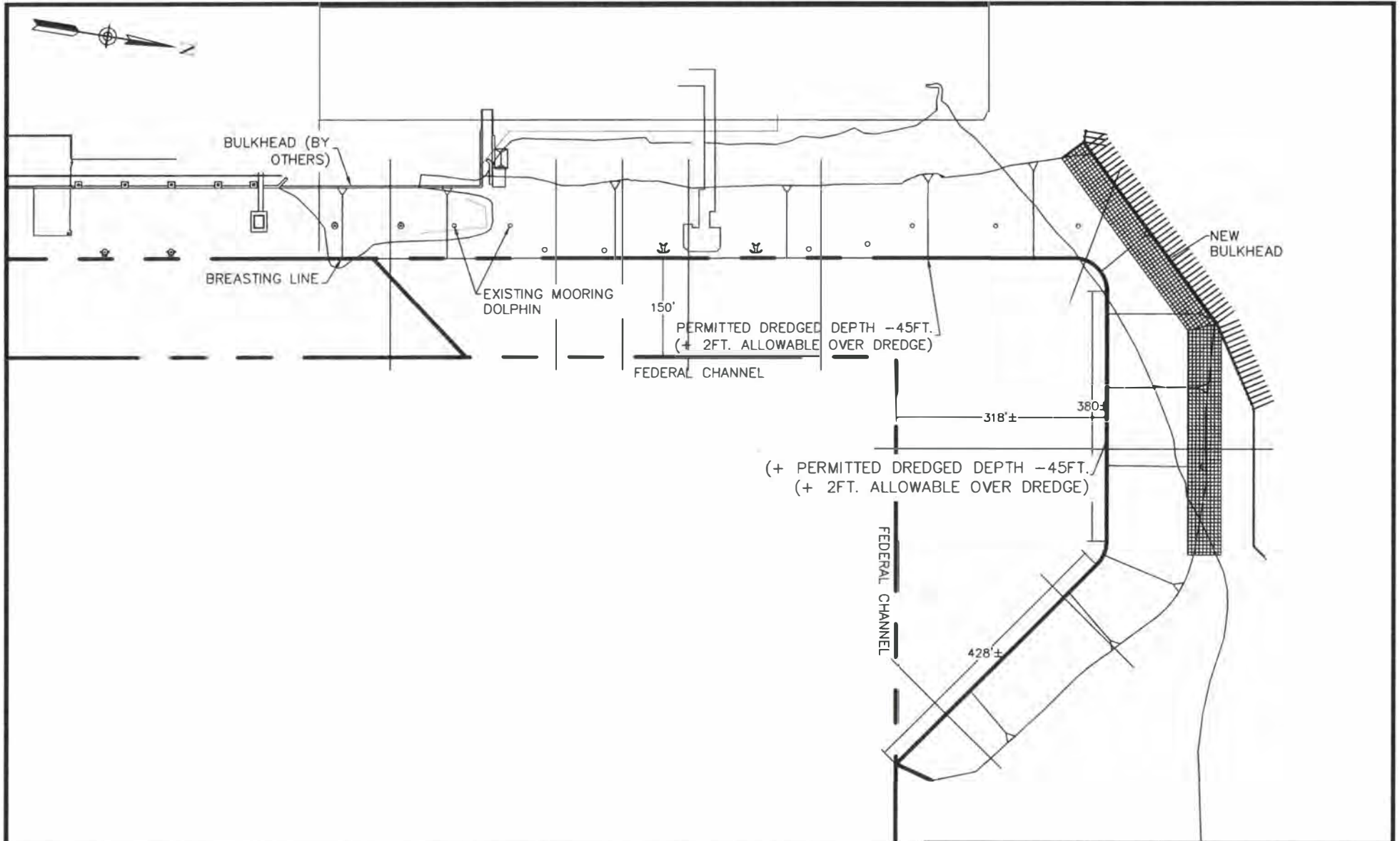
**Map of
 Adjacent Property Owners**

Enterprise Products Operating LLC
 SWG-2014-00905 - Permit Amendment

August 2, 2019


PERCHERON

1904 W. Grand Parkway N., Ste. 200
 Katy, Texas 77449
 Phone: 832-300-6400



DREDGING SITE PLAN
 MORGAN'S POINT DOCK 8
 SWG-2014-00905



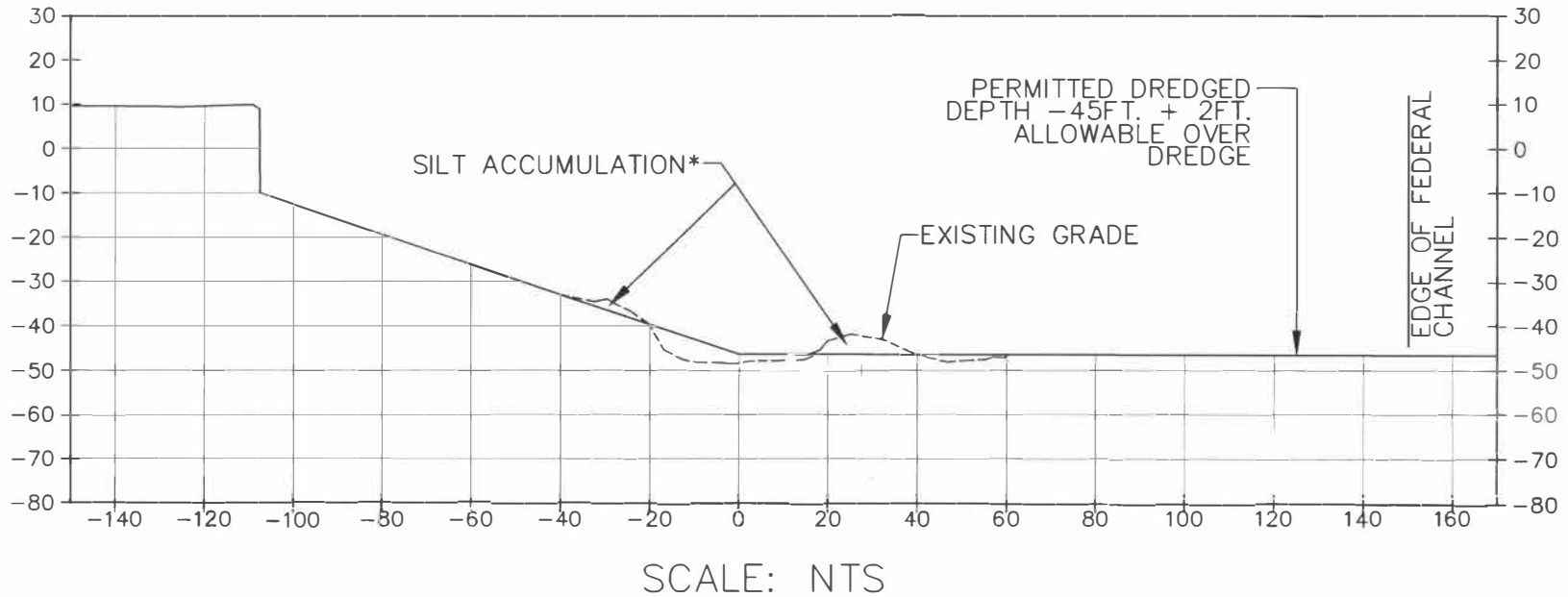
1904 WEST GRAND PARKWAY N.
 SUITE 200
 KATY, TEXAS 77449
 (832) 300-6400
 TEXAS SURVEYING FIRM LICENSE:
 NO. 10020700

DREDGING SITE
 PREPARED FOR
**ENTERPRISE PRODUCTS
 OPERATING LLC**

DATE: 8/6/2019	REVISIONS
DRAWN BY: NAH	
CHK BY:	
PROJECT#: 10.004771.00	


JUL 29 2020

PRE-SILT BLADE
MORGAN'S POINT DOCK 8
SWG-2014-00905



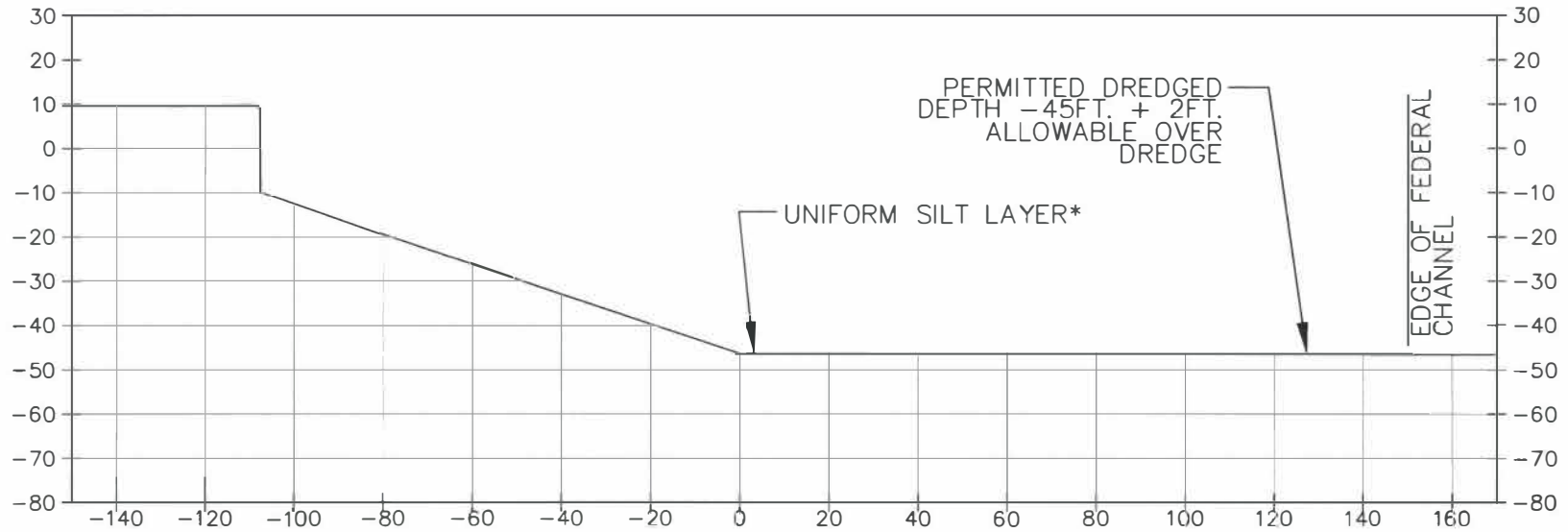
*NOTE:
FOR ILLUSTRATIVE PURPOSES.
THIS HAS NOT BEEN SURVEYED.

*HIGHER ACCUMULATIONS OF SILT WILL BE
BLADED/DROGGED TO AREAS OF LESS ACCUMULATION TO
PROVIDE UNIFORM DEPTH. NO MATERIAL WILL BE
DEPOSITED INTO FEDERAL CHANNEL.

 PERCHERON PROFESSIONAL SERVICES, L.L.C. 1904 WEST GRAND PARKWAY N. SUITE 200 KATY, TEXAS 77449 (832) 300-6400 TEXAS SURVEYING FIRM LICENSE: NO. 10020700	PROFILE VIEW PREPARED FOR ENTERPRISE PRODUCTS OPERATING LLC	
	DATE: 8/6/2019	REVISIONS
	DRAWN BY: NAH	
	CHK BY:	
	PROJECT#: 10.004771.00	

JUL 29 2020

POST-SILT BLADE
MORGAN'S POINT DOCK 8
SWG-2014-00905



SCALE: NTS

*NOTE:
FOR ILLUSTRATIVE PURPOSES,
THIS HAS NOT BEEN SURVEYED.

*HIGHER ACCUMULATIONS OF SILT WILL BE
BLADED/DRAINED TO AREAS OF LESS ACCUMULATION TO
PROVIDE UNIFORM DEPTH. NO MATERIAL WILL BE
DEPOSITED INTO FEDERAL CHANNEL.

 PERCHERON PROFESSIONAL SERVICES, L.L.C. 1904 WEST GRAND PARKWAY N. SUITE 200 KATY, TEXAS 77449 (832) 300-6400 TEXAS SURVEYING FIRM LICENSE: NO. 10020700	PROFILE VIEW PREPARED FOR ENTERPRISE PRODUCTS OPERATING LLC	
	DATE: 8/5/2019	REVISIONS
	DRAWN BY: NAH	
	CHK BY:	
	PROJECT#: 10.004771.00	

JUL 29 2020