

SITE VICINITY MAP

Project #: 8371
 For: Klotz Associates, Inc.
 Location: Town Creek Drainage Improvement Project
 Walker County, Texas


REVISIONS
Dec. 12, 2011 by MDB

BERG•OLIVER ASSOCIATES, INC.
 ENVIRONMENTAL SCIENCE, ENGINEERING
 & LAND USE CONSULTANTS
 14701 ST. MARYS LANE, SUITE 400
 HOUSTON, TEXAS 77079 PHONE (281)589-0898 <http://www.bergoliver.com>





LEGEND

 Limits of Town Creek Drainage Improvements

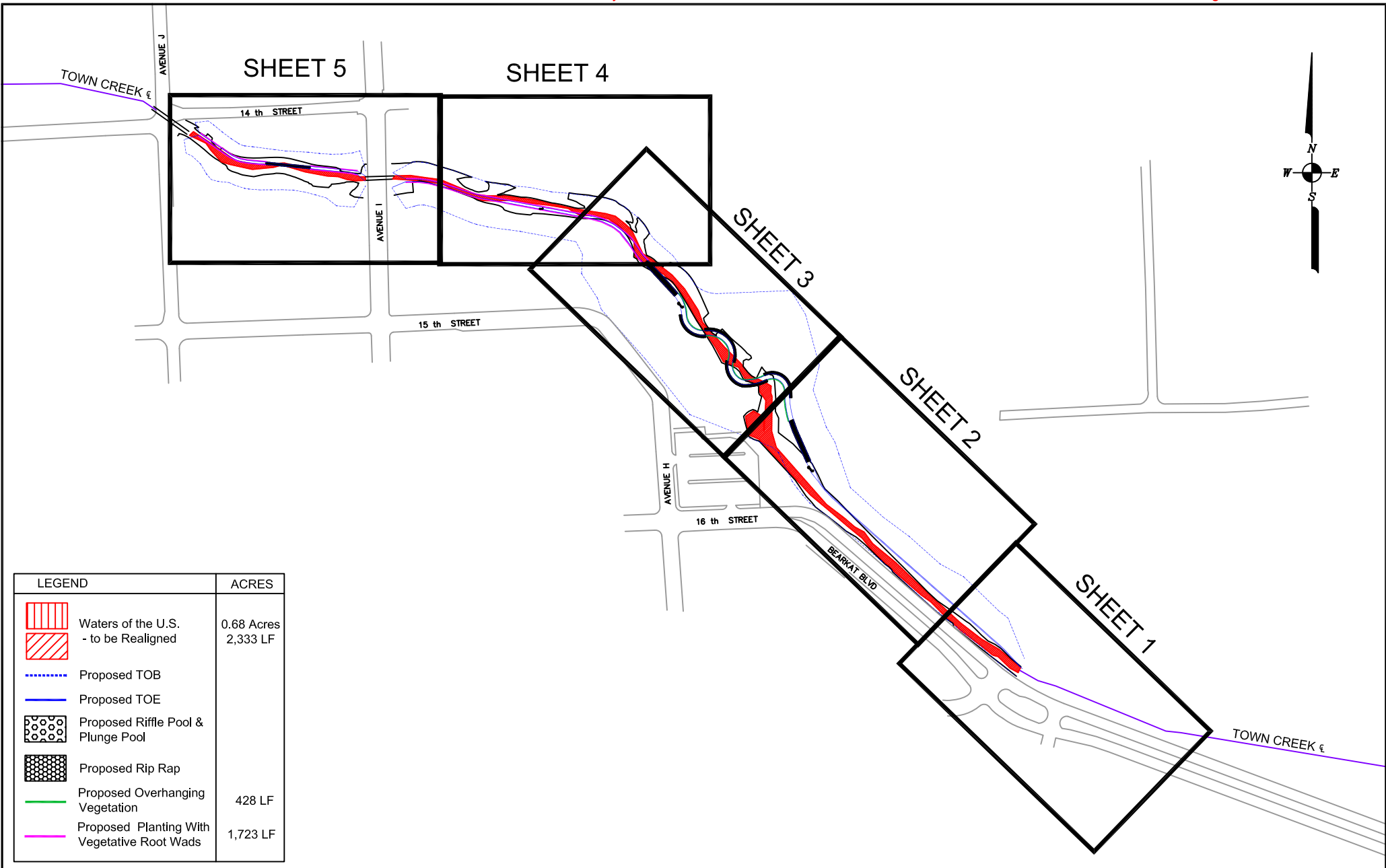
SITE LOCATION MAP








Project #: 8371
 For: Klotz Associates, Inc.
 Location: Town Creek Drainage Improvement Project
 Walker County, Texas

REVISIONS
Dec. 12, 2011 by MDB

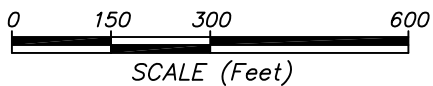
BERG•OLIVER ASSOCIATES, INC.
 ENVIRONMENTAL SCIENCE, ENGINEERING
 & LAND USE CONSULTANTS
 14701 ST. MARYS LANE, SUITE 400
 HOUSTON, TEXAS 77079 PHONE (281)589-0898 <http://www.bergoliver.com>





LEGEND	ACRES
 Waters of the U.S. - to be Realigned	0.68 Acres 2,333 LF
 Proposed TOB	
 Proposed TOE	
 Proposed Riffle Pool & Plunge Pool	
 Proposed Rip Rap	
 Proposed Overhanging Vegetation	428 LF
 Proposed Planting With Vegetative Root Wads	1,723 LF

PROPOSED TOWN CREEK DRAINAGE IMPROVMENTS OVERVIEW

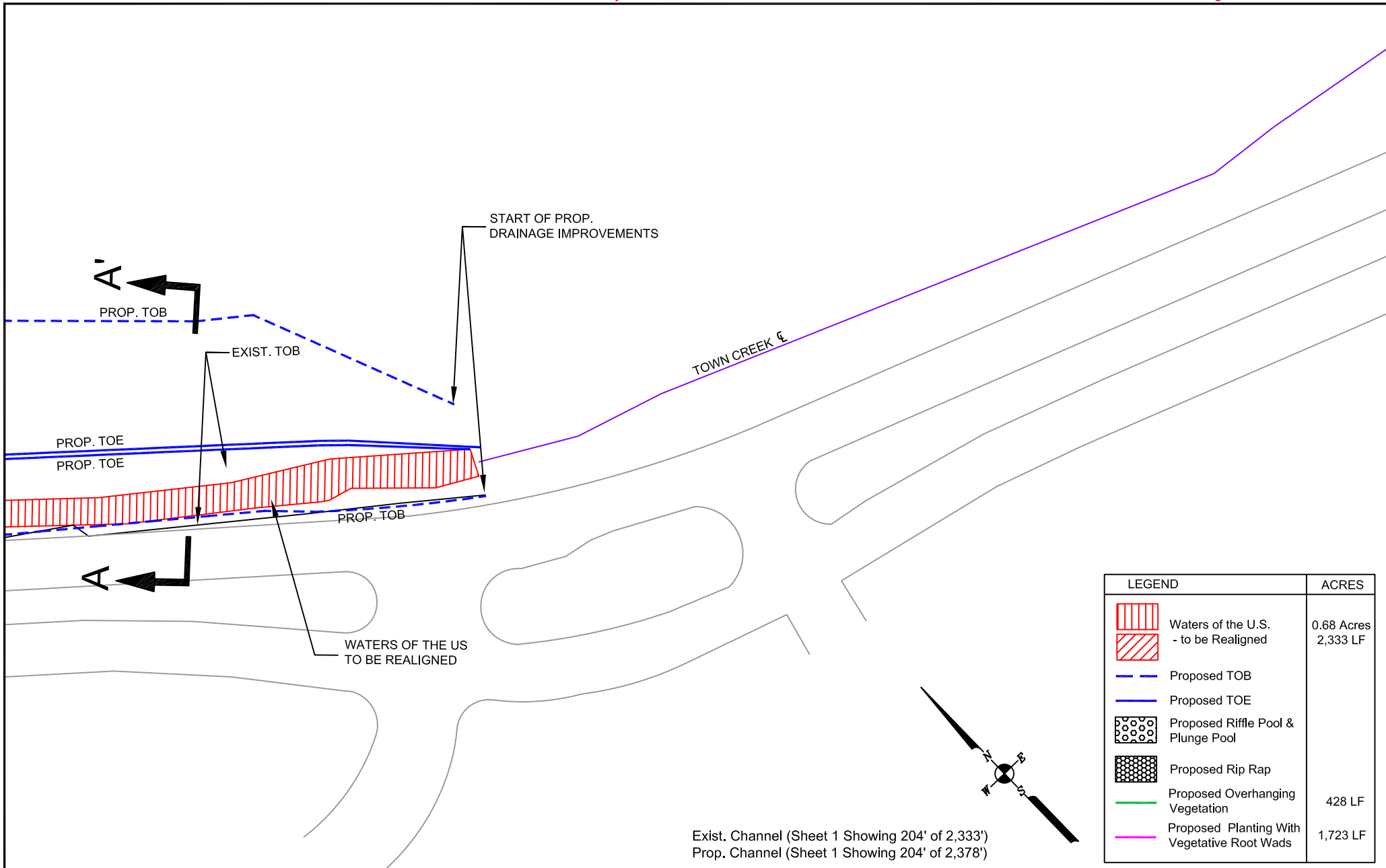


PROJECT #: 8371
 FOR: Klotz Associates, Inc.
 LOCATION: Town Creek Drainage Improvement Project
Harris County, Texas

REVISIONS:
Feb. 7, 2013 by MDB

BERG OLIVER ASSOCIATES, INC.
 ENVIRONMENTAL SCIENCE, ENGINEERING &
 LAND USE CONSULTANTS
 14701 ST. MARY'S LANE, SUITE 400 HOUSTON, TX 77079
 PHONE (281) 589-0898 <http://www.bergoliver.com>





LEGEND		ACRES
	Waters of the U.S. - to be Realigned	0.68 Acres 2,333 LF
	Proposed TOB	
	Proposed TOE	
	Proposed Riffle Pool & Plunge Pool	
	Proposed Rip Rap	
	Proposed Overhanging Vegetation	428 LF
	Proposed Planting With Vegetative Root Wads	1,723 LF

Exist. Channel (Sheet 1 Showing 204' of 2,333')
 Prop. Channel (Sheet 1 Showing 204' of 2,378')

PROPOSED TOWN CREEK DRAINAGE IMPROVEMENTS SHEET 1

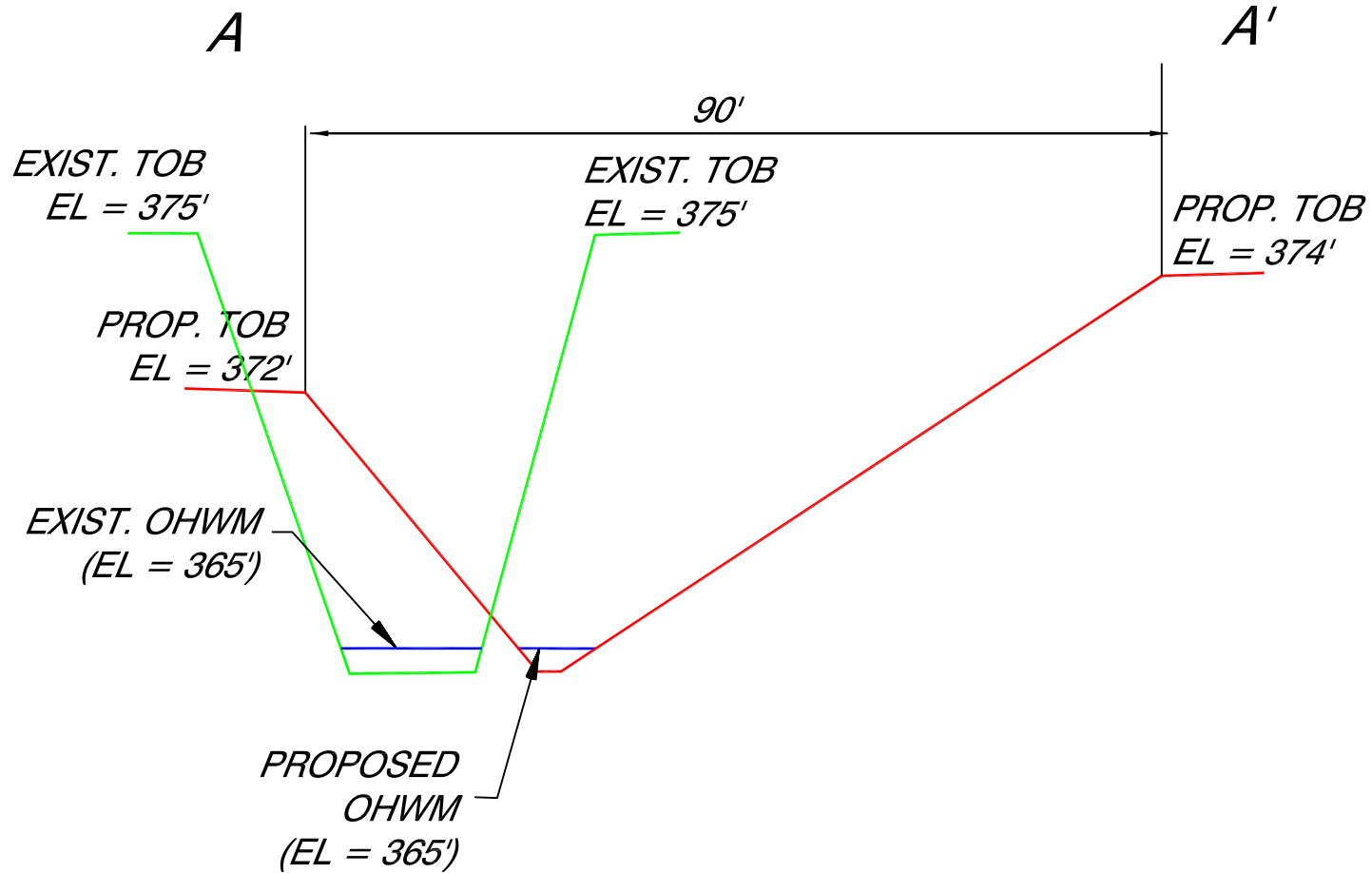


PROJECT #: 8371
 FOR: Klotz Associates, Inc.
 LOCATION: Town Creek Drainage Improvement Project
Walker County, Texas

REVISIONS:
Feb, 6, 2013 by MDB

BERG-OLIVER ASSOCIATES, INC.
 ENVIRONMENTAL SCIENCE, ENGINEERING &
 LAND USE CONSULTANTS
 14701 ST. MARY'S LANE, SUITE 400 HOUSTON, TX 77079
 PHONE (281) 589-0898 <http://www.bergoliver.com>





**PROPOSED TOWN CREEK DRAINAGE IMPROVEMENTS
CROSS SECTION A-A'**

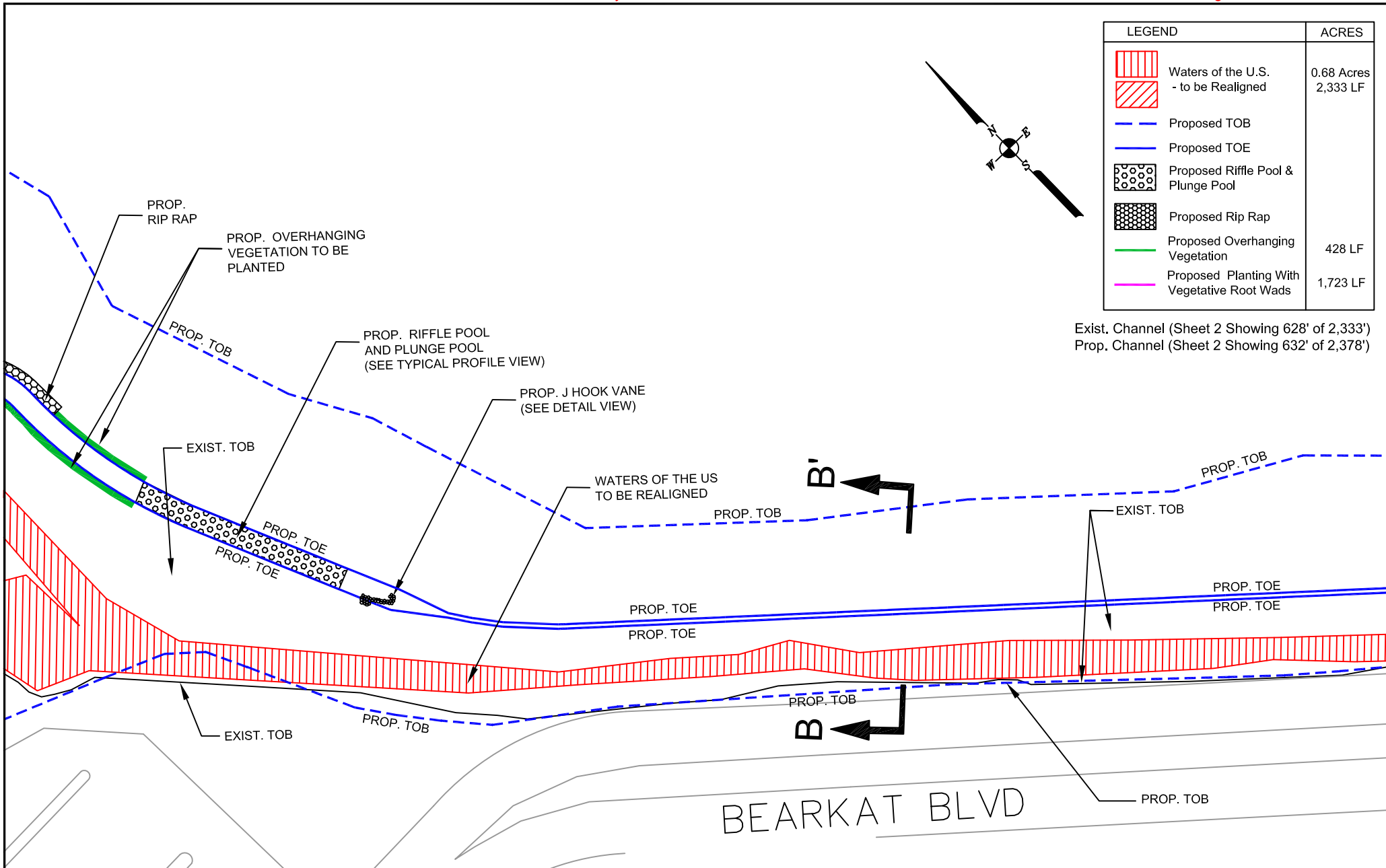
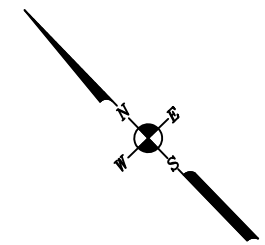
PROJECT #: 8371
 FOR: Klotz Associates, Inc.
 LOCATION: Town Creek Drainage Improvement Project
Walker County, Texas

REVISIONS:
Feb, 6, 2013 by MDB

BERG • OLIVER ASSOCIATES, INC.
 ENVIRONMENTAL SCIENCE, ENGINEERING &
 LAND USE CONSULTANTS
 14701 ST. MARY'S LANE, SUITE 400 HOUSTON, TX 77079
 PHONE (281) 589-0898 <http://www.bergoliver.com>



LEGEND		ACRES
	Waters of the U.S. - to be Realigned	0.68 Acres 2,333 LF
	Proposed TOB	
	Proposed TOE	
	Proposed Riffle Pool & Plunge Pool	
	Proposed Rip Rap	
	Proposed Overhanging Vegetation	428 LF
	Proposed Planting With Vegetative Root Wads	1,723 LF



Exist. Channel (Sheet 2 Showing 628' of 2,333')
 Prop. Channel (Sheet 2 Showing 632' of 2,378')

PROPOSED TOWN CREEK DRAINAGE IMPROVEMENTS SHEET 2

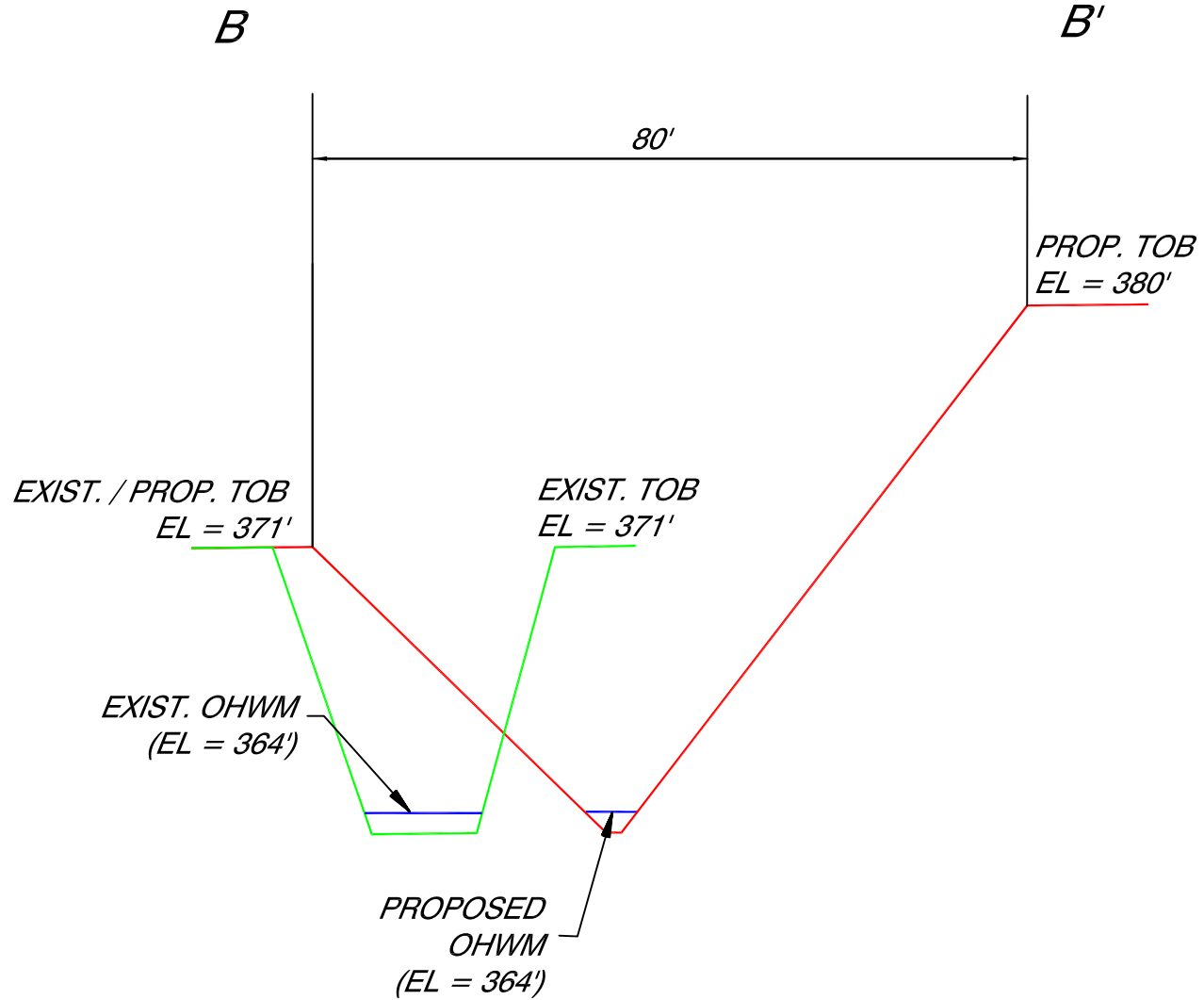


PROJECT #: 8371
 FOR: Klotz Associates, Inc.
 LOCATION: Town Creek Drainage Improvement Project
Walker County, Texas

REVISIONS:
Feb, 6, 2013 by MDB

BERG OLIVER ASSOCIATES, INC.
 ENVIRONMENTAL SCIENCE, ENGINEERING &
 LAND USE CONSULTANTS
 14701 ST. MARY'S LANE, SUITE 400 HOUSTON, TX 77079
 PHONE (281) 589-0898 <http://www.bergoliver.com>









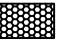


**PROPOSED TOWN CREEK DRAINAGE IMPROVEMENTS
CROSS SECTION B-B'**

PROJECT #: 8371
 FOR: Klotz Associates, Inc.
 LOCATION: Town Creek Drainage Improvement Project
Walker County, Texas

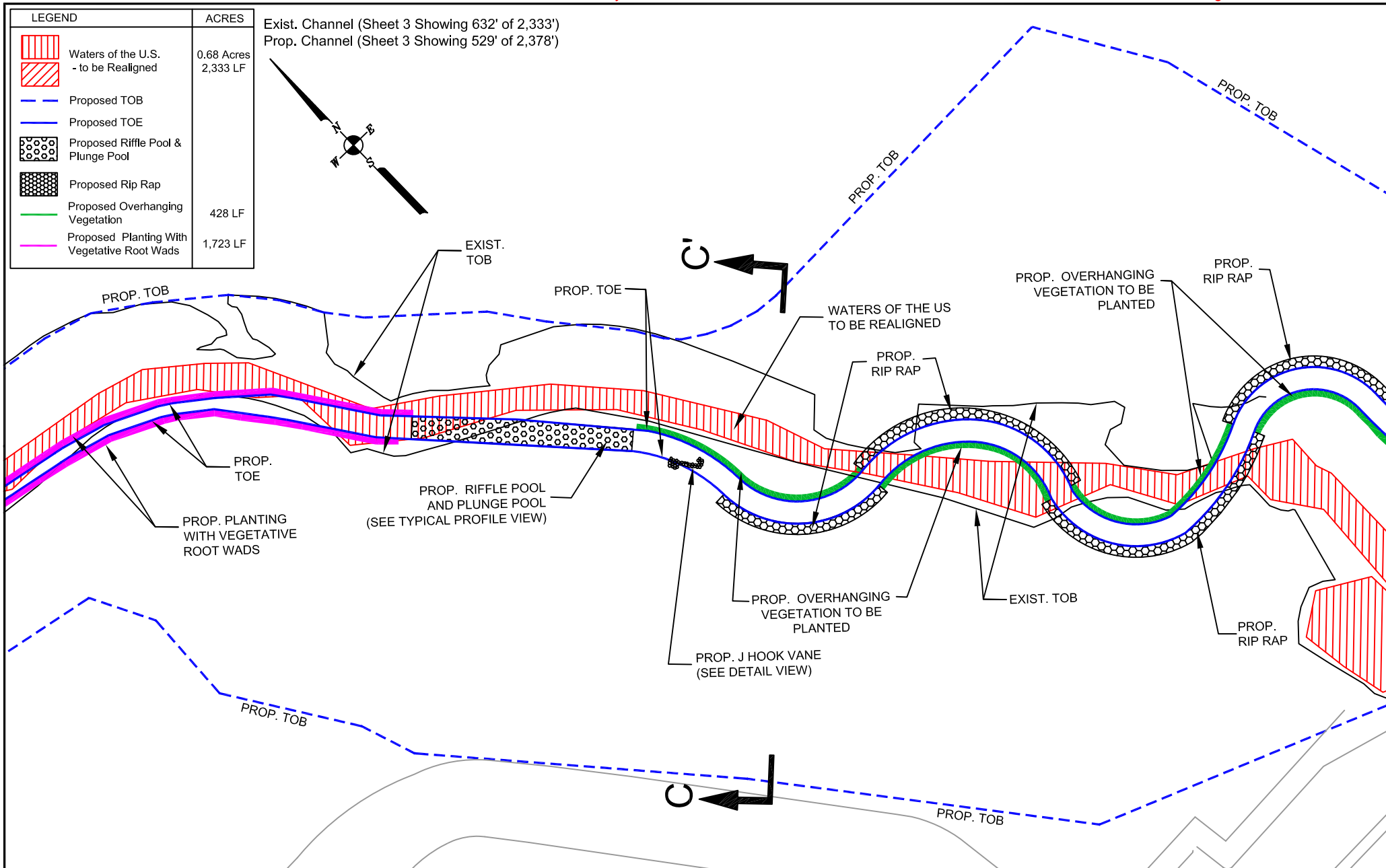
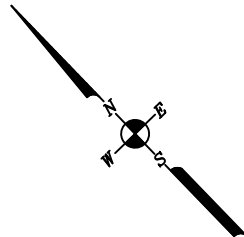
REVISIONS:
Feb, 6, 2013 by MDB

BERG-OLIVER ASSOCIATES, INC.
 ENVIRONMENTAL SCIENCE, ENGINEERING &
 LAND USE CONSULTANTS
 14701 ST. MARY'S LANE, SUITE 400 HOUSTON, TX 77079
 PHONE (281) 589-0898 <http://www.bergoliver.com>

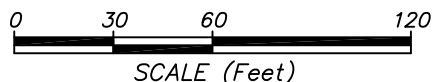


LEGEND	ACRES
	0,68 Acres
Waters of the U.S. - to be Realigned	2,333 LF
	
Proposed TOB	
	
Proposed TOE	
	
Proposed Riffle Pool & Plunge Pool	
	
Proposed Rip Rap	
	428 LF
Proposed Overhanging Vegetation	
	1,723 LF
Proposed Planting With Vegetative Root Wads	

Exist. Channel (Sheet 3 Showing 632' of 2,333')
Prop. Channel (Sheet 3 Showing 529' of 2,378')



PROPOSED TOWN CREEK DRAINAGE IMPROVEMENTS SHEET 3

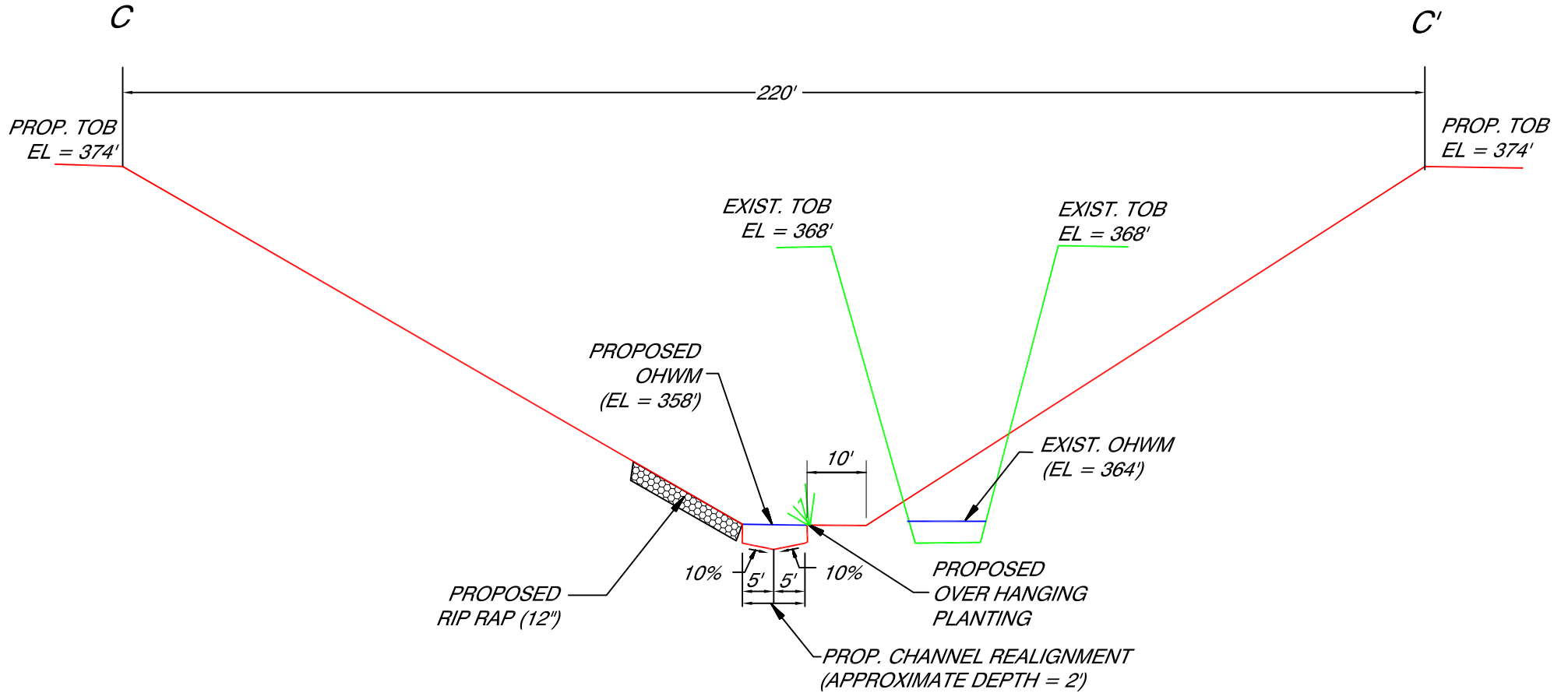


PROJECT #: 8371
 FOR: Klotz Associates, Inc.
 LOCATION: Town Creek Drainage Improvement Project
Walker County, Texas

REVISIONS:
Feb, 6, 2013 by MDB

BERG OLIVER ASSOCIATES, INC.
 ENVIRONMENTAL SCIENCE, ENGINEERING &
 LAND USE CONSULTANTS
 14701 ST. MARY'S LANE, SUITE 400 HOUSTON, TX 77079
 PHONE (281) 589-0898 <http://www.bergoliver.com>





**PROPOSED TOWN CREEK DRAINAGE IMPROVEMENTS
CROSS SECTION C-C'**

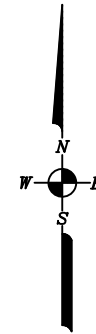
PROJECT #: 8371
 FOR: Klotz Associates, Inc.
 LOCATION: Town Creek Drainage Improvement Project
Walker County, Texas

REVISIONS:
Feb, 6, 2013 by MDB

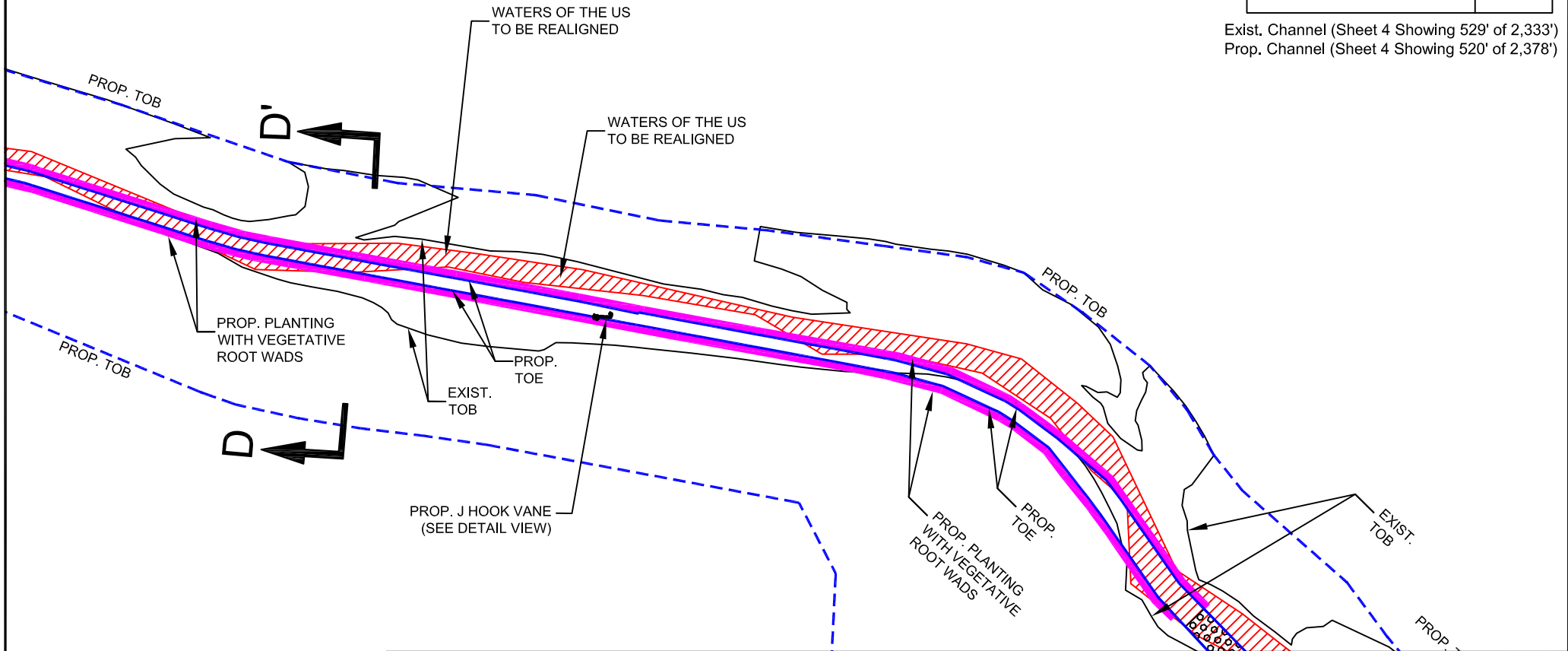
BERG OLIVER ASSOCIATES, INC.
 ENVIRONMENTAL SCIENCE, ENGINEERING &
 LAND USE CONSULTANTS
 14701 ST. MARY'S LANE, SUITE 400 HOUSTON, TX 77079
 PHONE (281) 589-0898 <http://www.bergoliver.com>



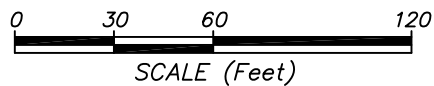
LEGEND		ACRES
	Waters of the U.S. - to be Realigned	0.68 Acres 2,333 LF
	Proposed TOB	
	Proposed TOE	
	Proposed Riffle Pool & Plunge Pool	
	Proposed Rip Rap	
	Proposed Overhanging Vegetation	428 LF
	Proposed Planting With Vegetative Root Wads	1,723 LF



Exist. Channel (Sheet 4 Showing 529' of 2,333')
 Prop. Channel (Sheet 4 Showing 520' of 2,378')



PROPOSED TOWN CREEK DRAINAGE IMPROVEMENTS SHEET 4

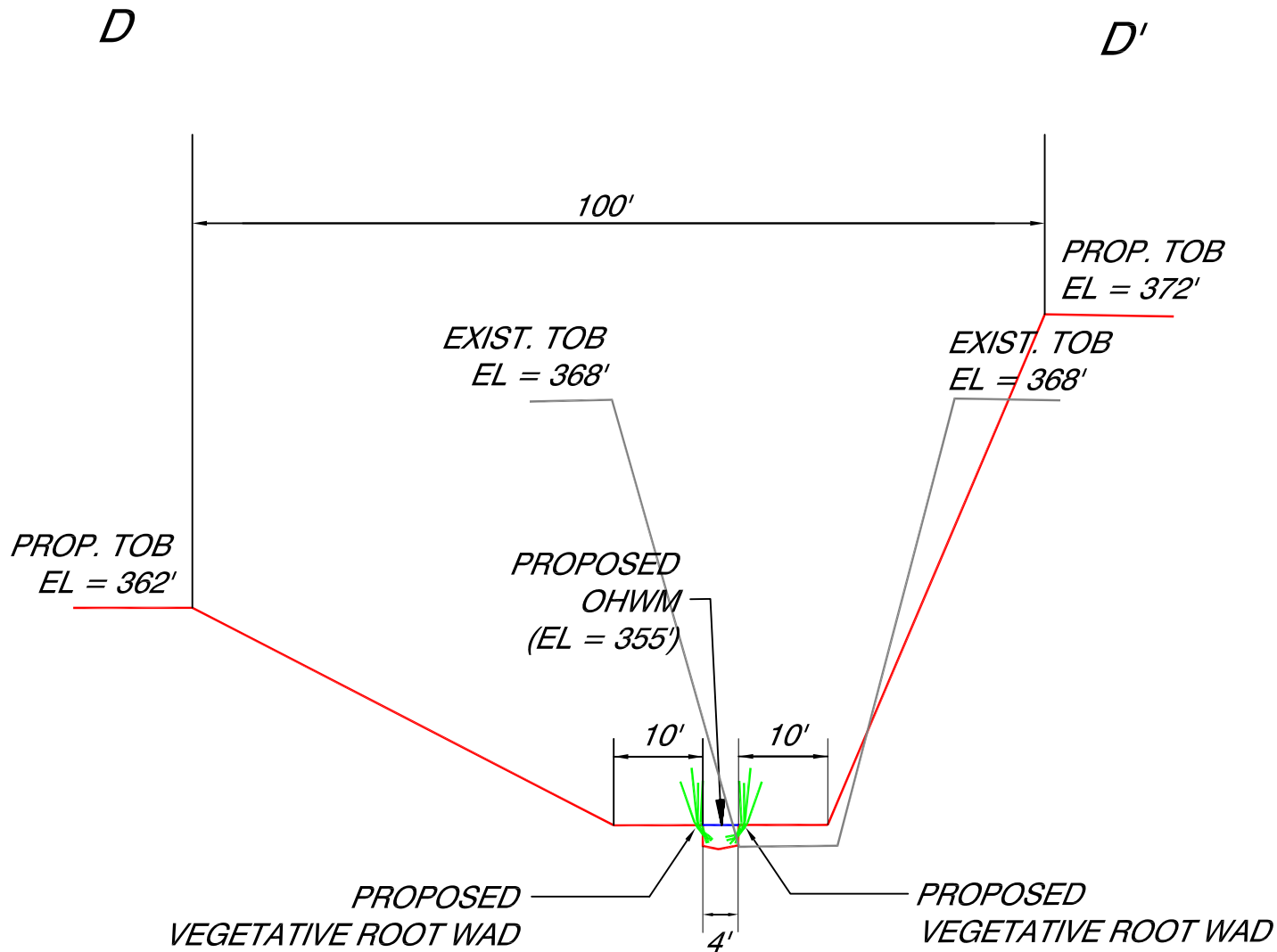


PROJECT #: 8371
 FOR: Klotz Associates, Inc.
 LOCATION: Town Creek Drainage Improvement Project
Walker County, Texas

REVISIONS:
Feb, 6, 2013 by MDB

BERG OLIVER ASSOCIATES, INC.
 ENVIRONMENTAL SCIENCE, ENGINEERING &
 LAND USE CONSULTANTS
 14701 ST. MARY'S LANE, SUITE 400 HOUSTON, TX 77079
 PHONE (281) 589-0898 <http://www.bergoliver.com>





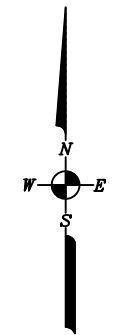
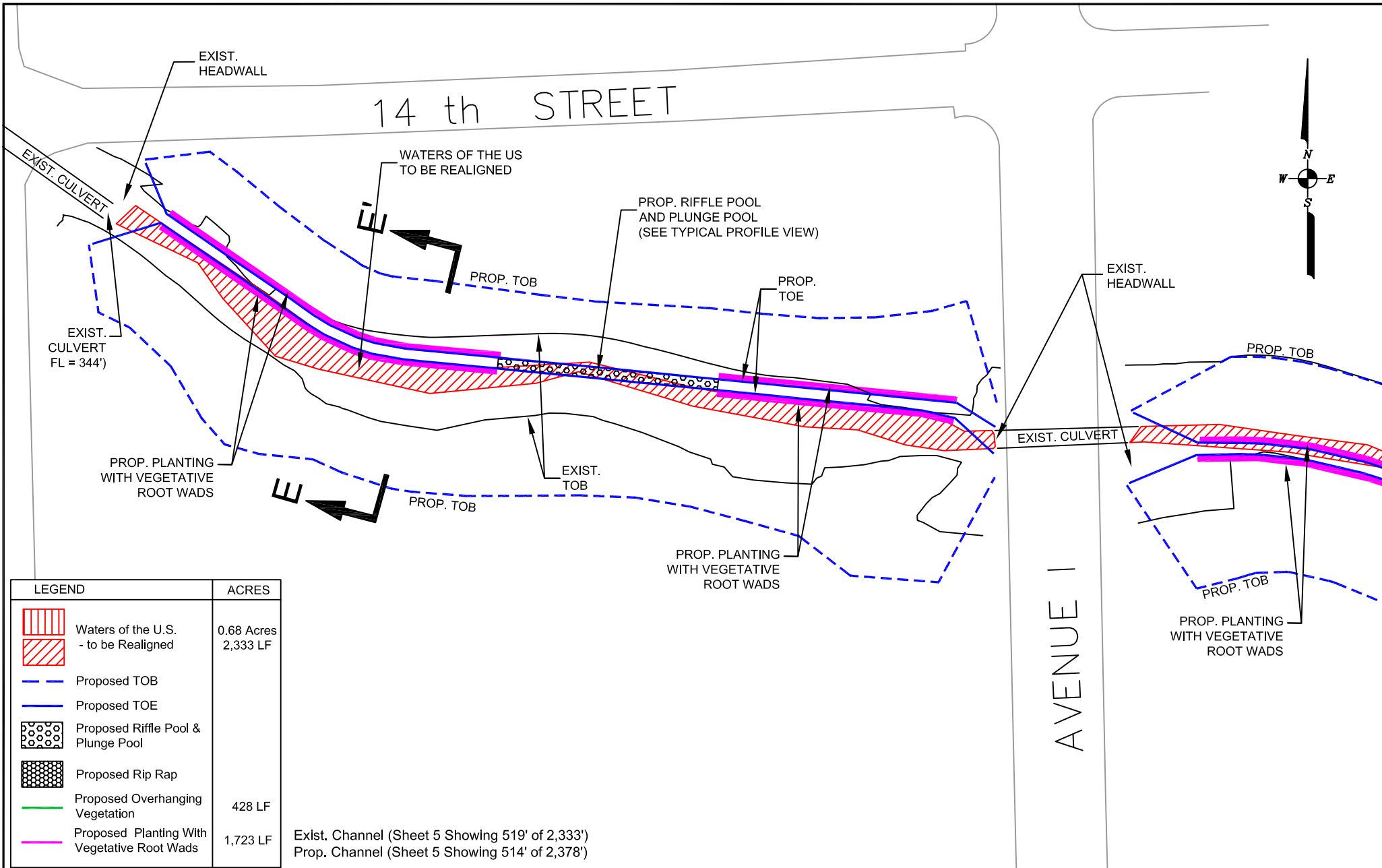
**PROPOSED TOWN CREEK DRAINAGE IMPROVEMENTS
CROSS SECTION D-D'**

PROJECT #: 8371
 FOR: Klotz Associates, Inc.
 LOCATION: Town Creek Drainage Improvement Project
Walker County, Texas

REVISIONS:
Feb, 6, 2013 by MDB

BERG • OLIVER ASSOCIATES, INC.
 ENVIRONMENTAL SCIENCE, ENGINEERING &
 LAND USE CONSULTANTS
 14701 ST. MARY'S LANE, SUITE 400 HOUSTON, TX 77079
 PHONE (281) 589-0898 <http://www.bergoliver.com>

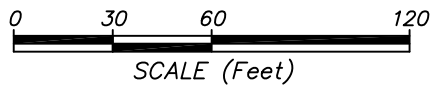




LEGEND	ACRES
Waters of the U.S. - to be Realigned	0.68 Acres
Proposed TOB	2,333 LF
Proposed TOE	
Proposed Riffle Pool & Plunge Pool	
Proposed Rip Rap	
Proposed Overhanging Vegetation	428 LF
Proposed Planting With Vegetative Root Wads	1,723 LF

Exist. Channel (Sheet 5 Showing 519' of 2,333')
 Prop. Channel (Sheet 5 Showing 514' of 2,378')

PROPOSED TOWN CREEK DRAINAGE IMPROVEMENTS SHEET 5

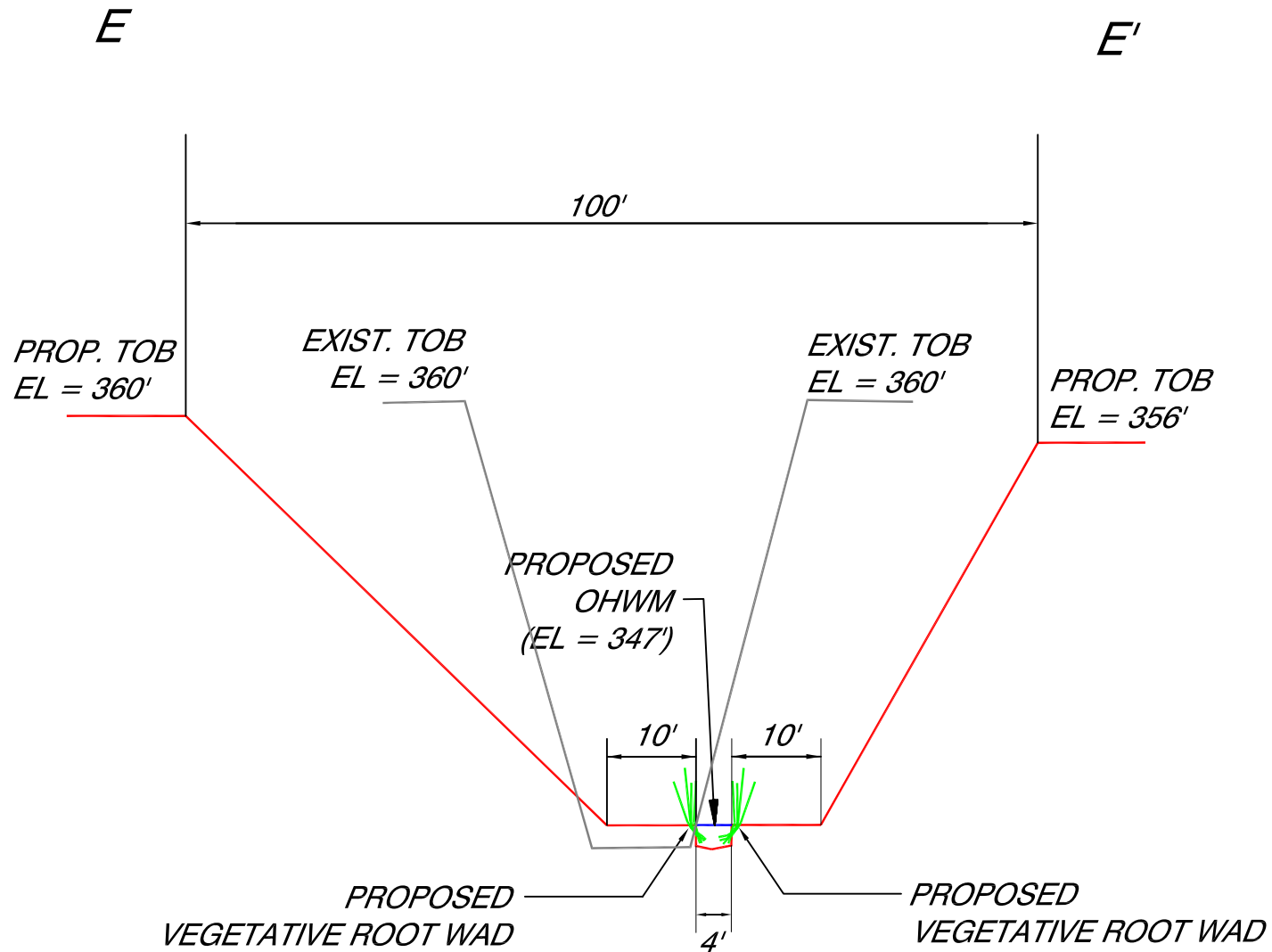


PROJECT #: 8371
 FOR: Klotz Associates, Inc.
 LOCATION: Town Creek Drainage Improvement Project
Walker County, Texas

REVISIONS:
Feb. 6, 2013 by MDB

BERG OLIVER ASSOCIATES, INC.
 ENVIRONMENTAL SCIENCE, ENGINEERING &
 LAND USE CONSULTANTS
 14701 ST. MARY'S LANE, SUITE 400 HOUSTON, TX 77079
 PHONE (281) 589-0898 <http://www.bergoliver.com>





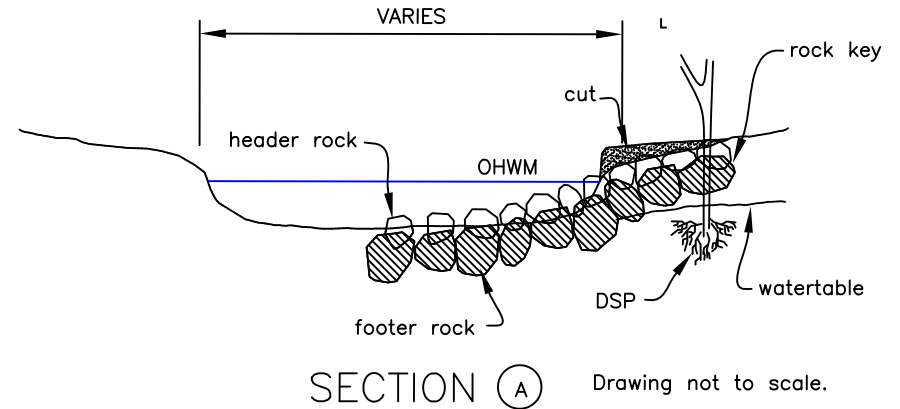
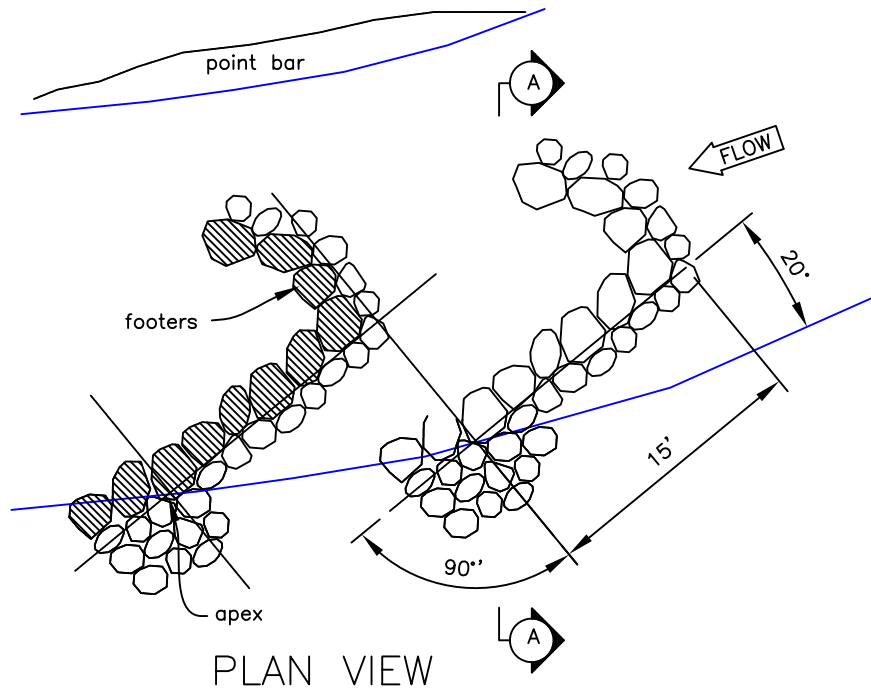
**PROPOSED TOWN CREEK DRAINAGE IMPROVEMENTS
CROSS SECTION E-E'**

PROJECT #: 8371
 FOR: Klotz Associates, Inc.
 LOCATION: Town Creek Drainage Improvement Project
Walker County, Texas

REVISIONS:
Feb, 6, 2013 by MDB

BERG ♦ OLIVER ASSOCIATES, INC.
 ENVIRONMENTAL SCIENCE, ENGINEERING &
 LAND USE CONSULTANTS
 14701 ST. MARY'S LANE, SUITE 400 HOUSTON, TX 77079
 PHONE (281) 589-0898 <http://www.bergoliver.com>





GENERAL NOTES

1. Vane will extend into the channel a total of 1/3 of the bank full width flow and will be angled from the streambank between 20° to 30°.
2. The top of the vane shall have a slope between 4° to 7°.
3. This standard drawing requires supporting technical documentation prior to use and must be adapted to the specific site.

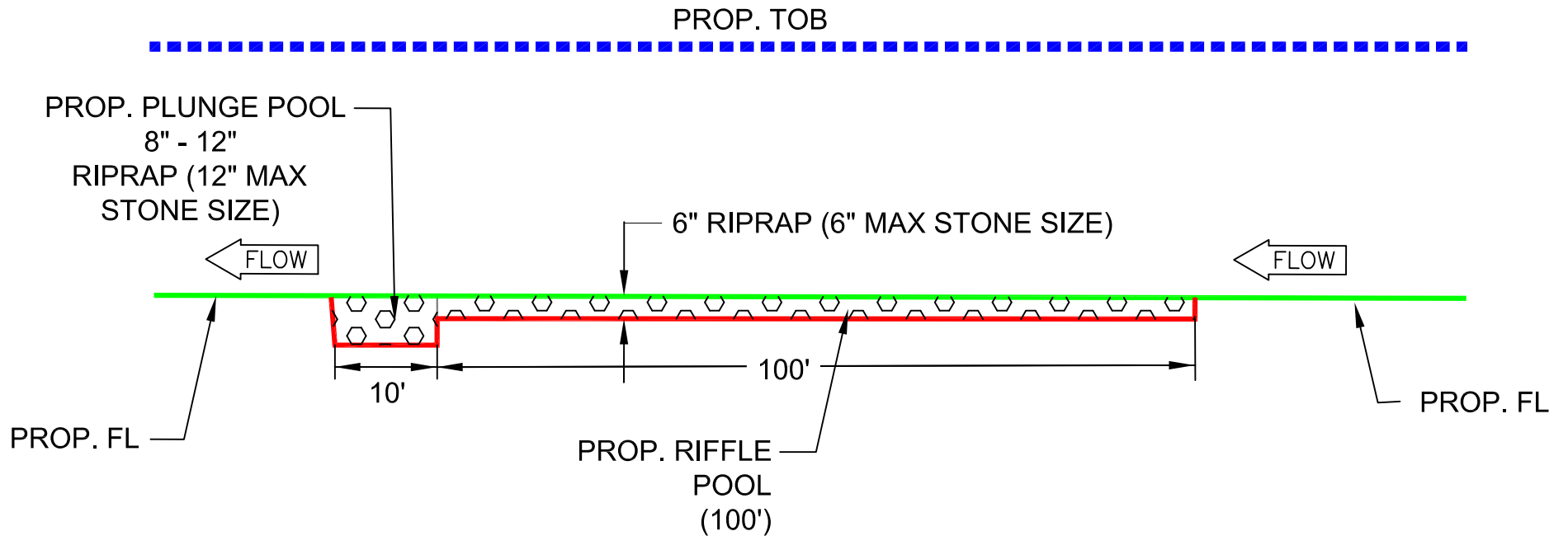
**PROPOSED J HOOK VANE
TYPICAL DETAIL VIEW**

PROJECT #: 8371
 FOR: Klotz Associates, Inc.
 LOCATION: Town Creek Drainage Improvement Project
Walker County, Texas

REVISIONS:
Feb, 6, 2013 by MDB

BERG ♦ OLIVER ASSOCIATES, INC.
 ENVIRONMENTAL SCIENCE, ENGINEERING &
 LAND USE CONSULTANTS
 14701 ST. MARY'S LANE, SUITE 400 HOUSTON, TX 77079
 PHONE (281) 589-0898 <http://www.bergoliver.com>





**PROPOSED RIFFLE POOL AND PLUNGE POOL
TYPICAL PROFILE VIEW**

PROJECT #: 8371
 FOR: Klotz Associates, Inc.
 LOCATION: Town Creek Drainage Improvement Project
Walker County, Texas

REVISIONS:
Feb, 6, 2013 by MDB

BERG•OLIVER ASSOCIATES, INC.
 ENVIRONMENTAL SCIENCE, ENGINEERING &
 LAND USE CONSULTANTS
 14701 ST. MARY'S LANE, SUITE 400 HOUSTON, TX 77079
 PHONE (281) 589-0898 <http://www.bergoliver.com>

